



## *Christchurch Village Newsletter*

**October 2012**

Welcome to the October edition of The Heron, firstly we would like to say 'Thank You,' to everyone who has pledged their continued support in us continuing the newsletter, now we 'going it alone'.

A special thank you goes out to Alvar Smart, who has been an irreplaceable help in organising the distribution side, as he already knew 'the ropes' as it were, from helping Pat pack the newsletters.

Also we would like to say a huge thank you to Wendy and David Yates who have took us under their wings, and bent over backwards to make sure we know all the sources, and people to call for information. Basically providing us with local knowledge that only comes from a lifetime of village experience. Many thanks and we hope you will continue to steer us in the right direction in the future.

The autumn has come all too quickly for everyone, the Indian summer we were all waiting for seems to have been cancelled and replaced by even more rain.

This month however heralds celebrations of the harvest. Local churches celebrating with harvest festivals services, and our local school hosting the 'Harvest Supper' on Saturday 13<sup>th</sup> October.

I'm sure many of you will be joining in celebrations throughout October, culminating in All Hallows Eve ( Halloween) on 31<sup>st</sup>. Look out for trick or treaters and make sure to have some sweets at the ready for any children in the village brave enough to dress up and bare the cold. And if you don't want to join in the fun cut out your very own 'no trick or treats' poster on page 19

We hope you enjoy, our first solo version, of this month's bumper edition of The Heron.

Paul and Mandi

Editors.

### **To all Contributors of Articles/Minutes/Club News**

We would like to remind everyone that to keep to The Heron delivery schedule all articles **MUST** reach us no later than mid day on the 28th of each month. We accept your features by post, email (preferred), hand delivered. Typed paper copies are preferred for ease of transcribing to computer, but if this is not possible please write clearly and place/person names in capitals so mistakes are not made in spelling.

As the new editors we feel that any article or prose submitted to us ( apart from pieces we find for legal or political reason we can not enter into the newsletter) we can only offer to put to print **word for word** exactly what we are given. Many terms and local idiosyncrasies specific to your particular group, topics and organisations are I'm afraid sometimes unknown to us being new to the area and not long term members of the local community or clubs. We do not wish to offend the writer or negate parts of literature with our ignorance so totally rely on your accuracy. (The newsletter is subjected to a basic spell checker but this obviously would not include names and regional terminology etc).

We look forward to continue to receive your articles and news.



In memory of  
**Patricia Mary Mills**

It is with great sadness that we write this now with the recent passing of our Mum.

Mum lived in the village of Christchurch for the last 15 years and we know that she became very involved in many aspects of the community. One of her main joys was the editing of The Heron magazine, which kept her occupied for many hours and we know she enjoyed it very much.

Mum often told us of how much she enjoyed going out with 'The Girls' and all the other activities that she participated in.

She loved her knitting, and Alan still has the jumpers to prove it. Cooking was a great enjoyment to her and we know that she was always making something, she often told us about the jams that wouldn't set!

We are so please that mum was able to spend time with her great grand daughter Caitlyn, whom she absolutely adored.

We wish to thank all the village people who attended her service and gave her the send off she would be proud of.

Thank you again to Wendy, Peggy, Alison, Sue and the rest of the ladies that put on the wonderful spread at the Bowles Club. It was lovely to see the people that mum so often talked about and be able to put faces to names.

Thanks again  
Sue & Alan



**To My Friend Pat**

Although Pat was some years older than me we had a lot in common, and we had both at a point in our lives lived and worked near Heathrow and knew the area well. Pat was interested in village life and clubs and although she was left handed she had a go at all the crafts. She loved knitting and got most of the village knitters involved when she arranged baby packs to go abroad. She loved to cook and would go to no end of trouble to cook a recipe she had spotted on the television or in a cook book.

Pat's shorthand was something I admired, she was so fast with all the little squiggles, and it was amazing to watch her.

We had a go at Jam making Pat and me, her doing the instructing and me doing the doing. (I will miss the jam making).

Wednesdays!!!! Shopping was a big day out for Pat. She enjoyed telling David where to go, whether he was driving or pushing her round Tesco's in her wheelchair. I think she brought things she didn't really need just so she could go on our shopping trips.

Sue, Pat's daughter tells me they found a cupboard full of pickled beetroot. (She'd cornered the market!)

More than anything, Pat was always there for me.  
Thanks Pat.

Wendy. x

"We only knew Les for a short time unfortunately when we moved in the village 9 years ago.

We are grateful to the both of them and particularly to Pat for carrying on with the Heron for so long.

She has played such a key part in ensuring our Village has this newsletter and we are very saddened by the loss. Pat had great drive and enthusiasm which I admired greatly and we will miss her.

Vanessa and Andy Murray, Fen View".

A valued and respected long serving member

Pat Mills missed and remembered by all

From

Christchurch Women's Institute.

We only had known Pat for a very short time compared to everyone else who we have met through her. Originally we contacted her wanting to offer her help with putting the Heron online but found her to be at a point where she was struggling to cope with the newsletter when she was suffering ill health, and we gladly offered more and more help to this enthusiastic woman, who had such amusing tales to tell about her life and the village.

Her determination to continue the newsletter, her self taught skills on a computer and internet we found admirable in someone of her years.

Our short time as her friend has given us the wonderful legacy of The heron and we only hope we can continue it with the vim and vigour she had for it over the many many years she was the editor.

We will miss her local knowledge, and gossip, her freedom of thought and speech and infectious giggling.

Mandi and Paul



### MOBILE POST OFFICE

The mobile post office vehicle which is currently parked at the Dunn Cow Public House between  
**4.00 pm— 4.55 pm ( prompt)**

From October will park in the lay-by on Upwell Road, ( Fenview) due to daylight saving time ending and visibility becoming limited.





## **Upwell Health Centre Newsletter**

**September 2012**

You may have been forgiven for thinking these newsletters were a thing of the past. It is certainly quite a while since I managed to get one out. I have been very busy in recent months, not simply at the surgery, where we were short handed for several months while Dr.Haine was away adding the population statistics, but also at the new Clinical Commissioning Group (CCG) where I have been involved in the birth of the new body which hopes to run the NHS locally. Currently I am waiting to see if I will be elected to the West Norfolk CCG Governing Body, I should know by the end of the month, and if I am successful I will be spending one day a week away from the practice trying to improve local NHS services for less money! A tall order but one we are trying to deliver.

The impending flu season has triggered this return to print. Every year in autumn we exhort many of you to attend the surgery for your annual flu vaccination. This year the vaccine is due in the last week of September and we have already set up the three Saturday morning flu clinics we run. They will be 8 am until 11am on the following Saturday mornings:

**September 29th  
October 6th & October 13th**

As usual if you are 65 or over, or less than 65 with a chronic lung condition, such as asthma or COPD, a heart condition, diabetes or other chronic endocrine condition, any disease which reduces your immunity, or on long term steroids or other immune suppressant drugs then contact the surgery to get a slot in one of these clinics. We will be offering you a jab if you attend the surgery this autumn and you have a qualifying condition and our nurses will also be running other flu clinics after the open days to allow us to reach as many of you as possible.

Our Patient Participation Group will be running a raffle at each clinic with the proceeds going to the Hunter Rowe Trust Fund which is run by the Health Centre for the benefit of the patients.

Those of you who have attended the surgery in the last 3 months will have seen the changes to the waiting room. We have given the room a facelift with a coat of paint, new carpets and we have altered the lay out of the seats to allow a better view of the TV screen which alerts you when the doctor or nurse is ready for you. These changes have been in response to feedback we have had from the patients in the last year or so. In the next few months we hope to replace the cushions with wipe clean ones to improve hygiene in the waiting room.

Another issue people have highlighted to us is queuing at reception. We have also taken steps to help that by installing an electronic booking-in screen opposite the reception desk. You can use this screen to alert us you have arrived for your appointment, which allows the receptionist to deal with other less routine matters. The system is simple to use and had a good take up when it was launched. Those of you who have been in in the last three weeks may have noticed the screen was not working. Well it seems in our anxiety to get the system working we plugged the lead into our computer server in what we thought was an unused socket. Unfortunately when our managing partner returned from holiday we discovered it had been used after all, for his computer! Hence it was swiftly unplugged and as yet has not come back on line. On the 15th of September a computer engineer is coming and we hope the screen will be back on after that.

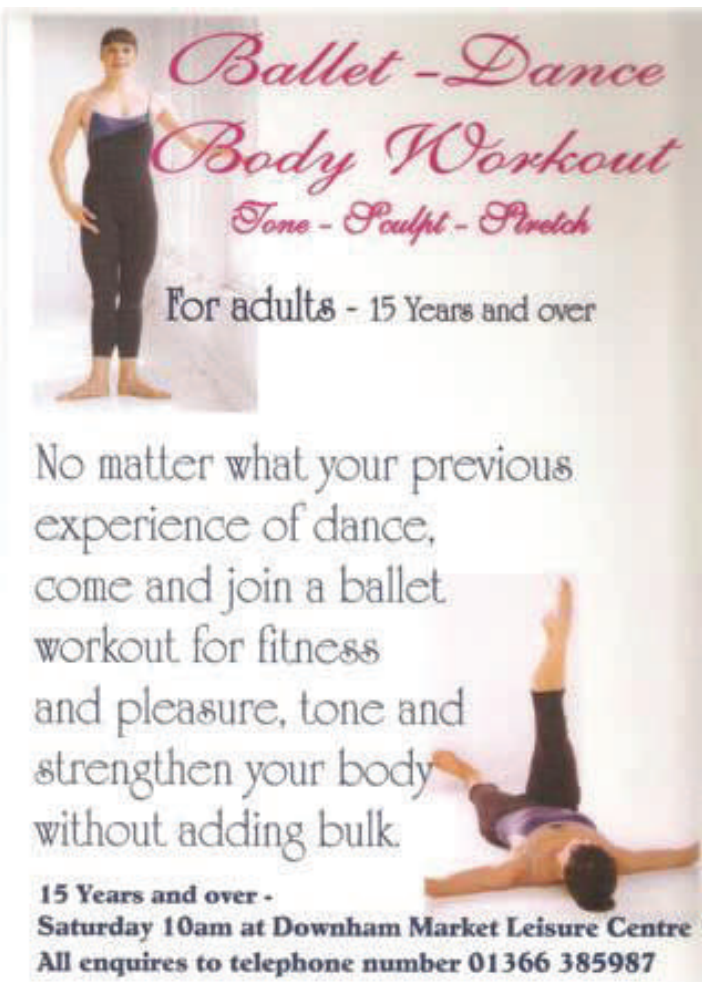
Continued...

As a result of the move around we have given more privacy to people using the automatic BP and weight machine near the patio doors. I would like to encourage you all again to take advantage of this unmanned health point, you can help us, and yourselves, by logging in and uploading data straight into your medical record which can create more time to talk to the doctor during your consultation.

There have been a few staff changes since the last newsletter. We have another Dr. Williams in the practice. Dr Nigel Williams, who was until last year a partner at the Clarkson surgery in Wisbech has been helping us out. He did a lot of cover during Dr. Haine's maternity leave and he will be with us for one day a week until next April. Having two Williams' in the building has caused some confusion, but just remember I am the younger one, despite my grey hair!

We also have Melanie Wakefield at reception in the afternoons, Mel is a local girl who used to work at the North Brink Surgery in Wisbech, but now she can walk to work. Sophie has gone off on maternity leave from dispensary and we have Julia in as cover for her. Jade in the office is back after her baby too, there do seem to be a lot of births at the surgery at the minute. Sue Lowe, who was a nurse practitioner with us for many years has moved to Ireland with her husband, as a result Sue Block has joined us. Sue has been sighted in the building since then though as she has come back to help out during the Easter and summer holidays.

Finally, it wouldn't be a Dr. Williams newsletter if I didn't mention drug costs! There is still a drive to reduce the money spent on drugs without affecting the quality of the treatment you receive. We have successfully reduced our spending in the last year and were below average for West Norfolk in the last financial year. However, more needs to be done. I wanted to explain why some drugs are cheaper than others. The inference is always that the cheaper drug must be inferior in some way. This is not always the case. When a new drug comes on the market the pharmaceutical company price it highly to help them recoup the money they have spent developing the drug. This is entirely reasonable. If the drug is similar to one already available then the company will always price it below the main competitor to get market share. After seven years the drug company lose the right to exclusivity for the drug. That means anyone can make it. As soon as there is more than one manufacturer of a drug market forces dictate that the price will drop as companies fight to get their particular product used. These simple laws of commerce apply to drugs as much as electronic or other consumer goods. So you see the same drug can have very different prices depending on how old it is and on how much competition there is in the market. When we switch you from one product to another we are taking advantage of these price differences to give you a drug at least as good, and in some cases better, than the one you were previously on. So please cooperate when one of us suggests switching your treatment to save money, it is after all your money and we are simply trying to deliver you best value for the taxes you pay.



*Ballet - Dance*  
*Body Workout*  
*Tone - Sculpt - Stretch*  
For adults - 15 Years and over

No matter what your previous experience of dance, come and join a ballet workout for fitness and pleasure, tone and strengthen your body without adding bulk.

15 Years and over -  
Saturday 10am at Downham Market Leisure Centre  
All enquires to telephone number 01366 385987



## STRAY CATS

This month we have been contacted by two members of the local community who have been feeding cats that have turned up at their doors. The RSPCA have quite detailed guidelines on 'stray cats' and won't just come out and 'take them away'. If you do notice a strange cat appearing regularly these are the basics that the RSPCA advise you to do before they can come out.

If the cat is injured or sick they will however come out and collect it ASAP or advise you if you can catch and handle the animal without injury to yourself or the cat to take it to a recommended veterinary practise.

**Do Not** Assume the cat is definitely a stray. Just because it turns up asking for food it may just be roaming and an opportunist.

Check with your neighbours and local shops, papers, to see if anyone recognises the animal, or has advertised it is missing. If it seems extremely cautious of humans consideration should be taken as to whether it is a feral cat, in which case contacting the RSPCA may still be appropriate if you think it may be un neutered.

If the animal is friendly, and you have access to a vets, take it in to have it scanned for a micro chip which may throw light on its origin. Vets don't usually charge for this.

If you can handle the cat, try fixing a paper collar on its neck (we have copied the one shown on the RSPCA's website.) They recommend writing the details on and covering with sellotape to make them more weather proof and stronger. Remember to leave a small strip as just paper though, so if the collar got caught it would tear off and not harm the cat. Also allow 2 fingers between the collar and the cat, not too tight round the neck. Only attempt this if the cat is very friendly, even the tamest of pets sometimes don't like having a collar put on.

Put a lost poster or ad in your local paper, newsletter, shop, providing as much detail of the animal as possible. Always hold back on a crucial piece of info so you can distinguish between hoax owners and the real thing. This may sound a strange statement but there is a market for animals for fur and testing etc and many are sourced via lost pet columns.

If you have gone down most/all these avenues and it has been longer than 14 days the cat can be re-homed and a request can be made for the cat to be collected by RSPCA or Cat protection charity.

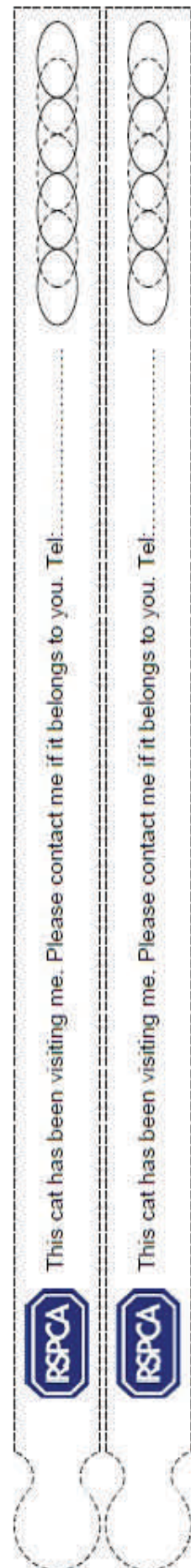
## LOST CATS

Our first possible stray has been visiting a lady in Upwell Road Christchurch. He is a young male who is all black apart from a small amount of white on a back foot. Originally he was wearing a yellow collar but that has now disappeared. He has been coming for food for over 3 months now and is very tame and she would very much like to find out who owns him before the weather starts getting bad.

Our second stray is a beautiful (if not so neglected) short hair blue Burmese ( like the Sheba cat on the adverts) he is also un neutered and roams constantly in Tipps End March Road area looking for food. He has been seen in gardens for over a year but is gradually becoming thinner and thinner signifying he is either lost or just abandoned.

Any one with any information that will help re-home these animals will be much appreciated. Please contact us at

The Heron on 01354 638048 or email [editor@theheron.info](mailto:editor@theheron.info)



## CHRISTCHURCH WOMEN'S INSTITUTE NEWS



Minutes of the September Meeting of Christchurch WI held in the Memorial Hall on September 11th 2012.

The President welcomed members, visitors and speaker Tricia Fisher. Minutes were signed. Apologies from A. Hicks, B. Gladwin, C. Symons, B. Brooks, D.W. Rolfe and K. Goodwin.

### Correspondence:

Information received about the Isle Cup competition and a Jam Festival.

Invitations from Welney, March St. Marys, Manea, and Marsh St. James WI's to attend their meetings.

Arrangements for transport for the Welney Harvest meeting were given out.

Our speaker Tricia Fisher gave an interesting talk on ceramics. Slip casting involves pouring "slip" into moulds. The two parts of the mould are held firmly together by strong rubber bands. The mould is then filled with slip and the surplus poured away. After firing in a kiln the article is smoothed and fired again and is then ready for painting. Tricia brought along a lovely display of items that she had made which were for sale.

This months competition results for an attractive cup and saucer: V. Parker 4, S. Kay 4, S. Lloyd 3, T. Day 5, W. Yates 3, P. Warby 5, S. Quail 3, M. Sparrow 5.

### Next Month:

Harvest Meeting. Refreshments will be served first followed by Sasparella ( a singing group ). An Auction of produce will be followed by Sasparella final session.

### Next months competition:

A flower arrangement in a pepper. No raffle prizes needed this month.

Peggy Warby  
President



### **Christchurch Cards / Notelets**

Limited Edition  
Christchurch Cards for sale only a few packs  
left only £2.00 per pack.

All proceeds to the redecoration and  
refurbishment of the village hall.

Contact Wendy Yates **01354 638448**

### **Magnolia Massage Therapy Complimentary Therapist**

Mobile Massage and Indian Head Massage  
Service based in Christchurch.

Prices start at £10 for a 15 minute Indian Head  
Massage or £10 for a 15 minute Back and  
Shoulders massage delivered in your own  
home.

Gift tokens available.

Why not arrange a girls night in and have a  
pampering party?

Fully qualified and insured massuer - member  
of the Federation of Holistic Therapists.

Please contact Caroline on 07833513245 or  
01354 638880 or have a look at my website for  
further information  
[Magnoliamassagetherapy.co.uk](http://Magnoliamassagetherapy.co.uk)



**Christchurch Garden Club**  
**September 25<sup>th</sup> 2012**



A very pleasant evening for members, as we watched and listened as our speaker explained and showed us the artistic beauty of nature's growth which we often take for granted.

Doreen Lentern is such a capable flower arranger, and we were rewarded with exquisite displays to take home and enjoy. Flower arranging is very relaxing and something else to achieve with a little bunch of greenery from your own garden, plus those last few flowers or buds wanting to be picked. (Don't forget the oasis! available from M & B or Goldings or Sky-Lark.) Better still, would you like to join us for 'Flower Arranging' to be arranged in the near future?

Our membership continues to grow, it is good to meet each other every 4<sup>th</sup> Tuesday as we do, smiley faces come through the door and the hall is alive with members chatting away, putting their cares aside and relaxing waiting for 'Bubbles' to greet them with 'Darlings'.

Please note our coach trip for the Christmas season is Sunday Dec 16<sup>th</sup> and we will visit 'Scotsdales' for a day trip. Pure pleasure for everyone, nostalgia dreams of magic as we wander through 'winter wonderland', 'Pop in? See Father Christmas? (Maybe? Who knows?) enjoying and perhaps remember days of yester year. Save the hassle of busy roads, car parking, come with us.

Coach fare members £6 Visitors £7

**To book contact 01354 638 024**

Our next club evening is October 23<sup>rd</sup> Barry Gayton to surprise us and prepare for the next season. **N.B 7 pm start**, see you all, and maybe we will be welcoming another new visitor, keep smiling.

 Bubbles

Tel :- **01354 638024**

Members for raffle donation are Jean and Neville.

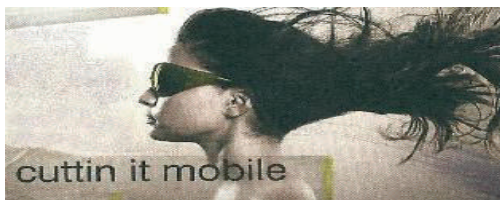
**LOCAL HAIRDRESSER**

Fully qualified in all aspects of  
hairdressing including:-

**\*~\*CUTS \*~\***

**\*~\*COLOURS ~PERMS \*~\***

Wella and Tigi Bed Head  
products used.



Call Julie on

07766558081 / 01354638768

**17 YRS SALON EXPERIENCE**

**Maximise the enjoyment of  
your home**

**with the professional help of**

**Brimstone  
Garden Design Services**

Design . Development . Maintenance  
Traditional and Modern Garden Styles  
Formal . Cottage . Oriental . Organic

**Contact Cliff for free advice**

**01354 638 217      078 080 78518  
cliff@brimstonegardendesign.com**



## **CHRISTCHURCH CRAFT CLUB**

Our meeting on 4th September was another enjoyable evening seeing a demonstration of pressed flowers in frames, with members joining in or creating their own individual projects.

Our next craft club evening on 4th October is our AGM, and we would like to encourage new committee members to come forward. Also on this evening we look forward to a 'Nail Painting' demonstration by Beryl Brooks.

Why not come along and join us - everyone is welcome, no matter where your interest in craft lies. We try our hands at a variety of crafts and also hold 'bring and make' sessions whereby members bring their own projects in to share with us. Entrance is £1.00 plus 50p for raffle and 20p for refreshments. Please come and join us - you don't have to come to every meeting! Meetings are held on the first Tuesday in the month, starting at 7.30 pm in the Memorial Hall.

I would also like to take this opportunity to thank all those members who donate such spectacular raffle prizes regularly.

For more information ring Wendy on 01354 638448.

Wendy Yates

A large banner with a dark, textured background of bare branches. The word 'sale' is written in large, white, lowercase letters. In the top right corner, the 'Skylark' logo is displayed in white, with 'GARDEN CENTRE' in smaller letters below it. At the bottom, the text 'On Plants, Trees & Shrubs' is written in white.

# sale

Skylark  
GARDEN CENTRE

On Plants, Trees & Shrubs

**Skylark**

COUNTRY STORE & GARDEN CENTRE,

Manea Rd, Wimblington, March,  
Cambs. PE15 0PA

Tel. 01354 741212

[www.skylarkgardencentre.co.uk](http://www.skylarkgardencentre.co.uk)



A logo for 'Skylark Week of Wickedness'. It features the 'Skylark' logo at the top left, with 'MAIZE MAZE & FUNYARD' in a small box to its right. Below this, the words 'Week of Wickedness' are written in a large, stylized, gothic font. At the bottom, the text 'Starts 25th Oct - 2nd Nov' is written in a bold, sans-serif font.

Skylark MAIZE MAZE & FUNYARD

Week of Wickedness

Starts 25th Oct - 2nd Nov

Do you want:

# Help with your computer?

would you like someone to:

**Fix your computer or recover lost speed?**

**Set up a new computer for you, dispose of the old PC, after security wiping data?**

**Sort out Internet connection and problems?**

**Provide a course of lessons on using your computer for a range of activities?**

**Call outs to your home for problem solving - £45/hr**

**Lessons on your own PC - four 1 hour lessons - £99**

**Work on your PC at our workshop - only £30/hr\***

\*(collection and return - £45)



**PC Life Support**

**over 25 years  
experience  
supporting  
computer  
users**

[www.pclifesupport.co.uk](http://www.pclifesupport.co.uk)

[info@pclifesupport.co.uk](mailto:info@pclifesupport.co.uk)

**Call 01354 638683 to find out more**

## Opening Hours:

### Monday to Thursday

6 pm to 10 pm

### Friday

6 pm to 12 am

### Saturday

6 pm to 12 am

### Sunday

12 pm to 10 pm

### Bank Holiday

5 pm to 10 pm

## The Dun Cow

**Tel: 01354 638323**

### Grill night - Tuesdays

8oz steak and chips  
Or 2 pork loins and chips  
or gammon and chips  
or chicken breast and chips  
Only £6.95

## Upcoming events

### 3rd November

Halloween fancy dress  
Fire works, hotdogs,  
jacket potatoes and chilli  
will be available

## Food being served :

### Monday

Closed

### Tuesday grill night

7pm to 9pm

### Wednesday/Thursday

Closed

### Friday curry night

7pm to 9pm

### Saturday

6 pm to 8 pm

### Sunday

1 pm & 3 pm sittings  
booking advisable

**Thanks to all to all of you that have supported us, it is very much appreciated .**



## **Flu Jabs**

**This years Flu Jabs are being administered at Upwell Surgery on the following days:-**

**Saturday 29th September, Saturday 6th October, and Saturday 13th October.**

**Ring into surgery to book your appointment, and to ask for information on 01945 773671.**

**The usuall raffle in aid of the Hunter Rowe Trust will be held on all three days by the Patient Participation Group offering valuable prizes from local business's. So don't forget to take some change to buy a ticket and support this worthy cause.**



Beachwood fires are bright and clear  
If the logs are kept a year  
Chestnut only good they say  
If for long it's stored away  
Make a fire of elder tree  
Death within your house will be  
But ash new or ash old  
Is fit for a queen with a crown of gold  
  
Birch and fir logs burn too fast  
Blaze up bright and do not last  
It is by the Cornish said  
Hawthorn bakes the sweetest bread  
Elm wood burns like churchyard mould  
Even the very flames are cold  
But ash green or ash brown  
Is fit for a queen with a golden crown  
  
Poplar gives a bitter smoke  
Fills your eyes and makes you choke  
Apple wood will scent your room  
With a incense-like perfume  
Oaken logs, if dry and old  
Keep away the winters cold  
But ash wet or ash dry  
A king shall warm his slippers by

Anon

## **Try you hand at Flower Arranging**

Christchurch Flower Arranging Club

Launches on

19<sup>th</sup> November 2012

**7 P.M**

In the Village Hall

And there after, every 3<sup>rd</sup> Tuesday of each month

For further details contact

Bubbles on **01354 638024**

All welcome experienced and novice.



# **Christchurch Parish Church**

## **Harvest Supper**

Saturday 13<sup>th</sup> October 2012

Townley School Hall

6.30pm

Menu: Fish, Chips and Mushy Peas

Dessert

Cheese and Biscuits

Tea or Coffee

Adults: £7 Children: £4

Let us know if you require a vegetarian meal.

Soft drinks will be provided but please bring your own wine or beer etc.

To book a ticket Tel: Helen 638092, Karen 638781 or  
Ruth 638419 (by Thursday 11<sup>th</sup> October 2012 at the  
latest)

# TOWNLEY SCHOOL

Christchurch, Wisbech, Cambs. PE14 9NA

Email: [office@townley.cambs.sch.uk](mailto:office@townley.cambs.sch.uk)

Website: [www.townleyschool.org.uk](http://www.townleyschool.org.uk)

Tel/Fax: 01354 638229

## Roald Dahl Day

Last week Class 2 and 3 watched a live interactive web link with Quentin Blake and Michael Rosen. They all wore masks based on the books of Roald Dahl.



## School Council 2012/13



This years school council have been elected!  
Chairperson—Eleanor,  
Secretary—Rosie and Elliot.  
Other members include:  
Freddy, Jake, Jack and Daisy

## Diary Dates

Monday 1st October—School Photos

Wednesday 10th October - Harvest Festival at the Parish Church (details to follow).

15th / 16th October - Parent's Evening (details to follow).

26th October—break up for half term.

Tuesday 6th November - Pupils Return



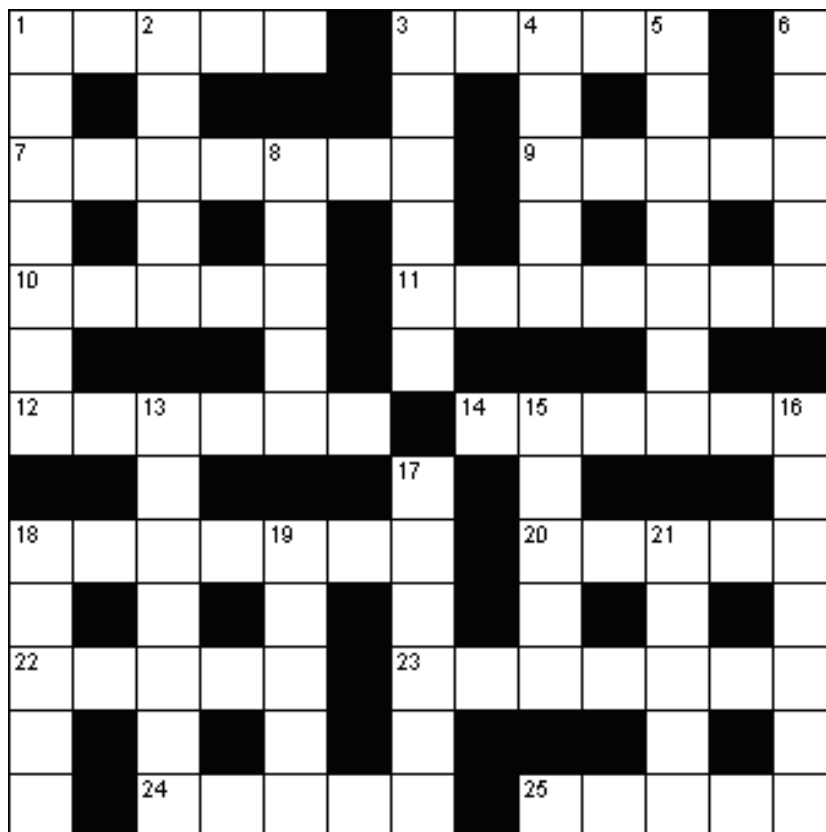
Townley School would like to thank the Parish Council for donating some benches for our playground.



Last month Townley were pleased to receive a letter from Cambridgeshire County Council, Children and Young Persons Services saying that following our recent Keep in touch visit and analysis of data, we have been confirmed as a self-sustaining school.

## Across

1. Utensil (5)
3. Path (5)
7. Disregarded (7)
9. Send out (5)
10. Military command (5)
11. Mythical beast (7)
12. Taste (6)
14. Movie house (6)
18. Bet (7)
20. Deduce (5)
22. Awkward (5)
23. Roamed (7)
24. Finished (5)
25. Small boat (5)



## Down

1. Mariners (7)
2. Possessed (5)
3. Boredom (6)
4. Legal excuse (5)
5. Svelte (7)
6. Beer mug (5)
8. Relating to country life (5)
13. Tycoon (7)
15. Dialect (5)
16. Condense (7)
17. Worshipped (6)
18. Forgo (5)
19. Graded (5)
21. Criminal (5)

## Medium

			2					5
9		6			3		4	
	2			1		9		
		3		6			5	
	5		9			7		8
4					1			
	7					6		
			3		4			
		5					1	

## Hard

	8			4	7	2	5	
				1			3	
	3			2	6	7	1	
	7				9	5		
			7					6
9		2						
5		6						
			1					7
	1				4	8		

**SANDRA & BARRY KAY**

Soft Furnishings, Curtains,  
Loose Covers, Bedspreads,  
Hard and Soft Pelmets

All hand made to order  
using your own fabrics  
Fitting Service  
Tracks and Poles supplied

Conservatory, Roof Blinds  
Specialist

All types of Blinds fitted

Tel: Sandra 01354 638478  
Barry 07967 818364

**10% DISCOUNT ON  
PHONE ORDERS  
OVER £14.00**

**Navrady's**

**OF UPWELL  
GOOD FOOD  
GOOD VALUE  
105 School Road  
Upwell Wisbech**

**01945 772398**

**FOR SALE**

**Electric Recliner/Riser Chair**

**Beige fabric upholstered  
cost over £400 new,  
immaculate condition**

**£190 ovno**

**Tel 01354 638448**

**NEED TO ADVERTISE?**

**ONLY NEED A ONE OFF OR  
SMALL PRIVATE ADVERT?**

**WE CAN GIVE YOU A SMALL SPACE  
LIKE THIS FOR ONLY 10p PER WORD.**

**EMAIL  
ADVERTS@THEHERON.INFO**



**Beauty Treatments**  
By  
**Jane**

**N.V.Q. – i.b.d. – Babtac**

**LCN Microdermabrasion  
Facials**

**St.Tropez Spray tanning  
Gel pedicures  
Shellac manicures  
Week-end & semi permanent  
eyelashes**

**Rose Cottage,  
Christchurch  
Telephone: 01354 638378**

**A. R. CLINGO**  
**Funeral Director**

***Business  
Incorporating  
ROLAND SINGLETERRY,  
CHRISTCHURCH***

***PINFOLD HOUSE, UPWELL  
Telephone WISBECH 772502***

***Private Chapel of Rest  
24-Hour Service to all areas***

**PAUL BRAYBROOKE**  
**OIL FIRED BOILER ENGINEER**

**BOILER SERVICING**

**BREAKDOWN SERVICE**

**OIL TANKS REPLACED**

**Telephone 01353 777788**  
**Mobile 0794 6735691**



## **Parish Church Services**

7th October	11:00am	Revd K Fitzgibbon - HARVEST THANKSGIVING
14th October	9:30am	Revd K Fitzgibbon - Holy Communion
21st October	6:30pm	Revd K Fitzgibbon - Evening Prayer
28th October	11:00am	S E Tooke - Morning Prayer
4th November	11:00am	Revd K Fitzgibbon - All Age Worship

Our Thanks to everyone who supported the Coffee and Cookie morning. £265-15 was raised for Church Funds

Daphne and Andrew

### **Date to Remember**

November 24th 2012 Autumn Fayre

Any matters concerning the Parish Church please contact  
Rev'd Kevin Fitzgibbon on 01354 680969.

### **200+ CLUB DRAW (58)**

MAY-AUG 2012 DRAWN SEPT 4TH 2012

Prize	Picking Order	Number Drawn	Name of Winner
£100	1	41	P JOLLEY
£20	2	43	M READER
£20	3	125	S QUAIL
£20	4	176	S TROWLER
£20	5	27	C COOPER
£20	6	166	D WILLMORE
£10	7	97	D CHISHOLM
£10	8	165	R BAXTER
£10	9	186	M SADLER
£10	10	45	P JOLLEY
£10	11	103	J LILLEY
£10	12	24	J FARNSWORTH
£10	13	38	R GLADWIN
£10	14	44	P JOLLEY
£10	15	107	S BOOTH
£10	16	197	B JOLLEY

Draws will normally held just before the start of the Memorial Hall Committee Meeting in the months APR/AUG/DEC. See The Heron for future meeting dates.

NO TRICK OR  
TREATS



THANK YOU

# **Christchurch Parish Council News**

## **Draft agenda for next Council meeting 7:30pm, Monday 8<sup>th</sup> Oct 2012, Memorial Hall, Church Road.**

**Public and Press are welcome and can speak to the Councillors during the Public Adjournment.**

1. Open, welcome and apologies
2. Presentation by Jane Andrews-Gauvain on a Bio-diversity project being run by the Cambridgeshire & Peterborough Environmental Records Centre
3. Signing of previous meeting's minutes Sept 2012
4. Disclosure or declaration of interests
5. Update on actions from previous meeting
6. Public Adjournment (time to raise issues affecting you with the Council)
7. Police Update
8. Correspondence
9. Finance
10. Review of Planning Applications
11. Parish Plan
12. Reporting of Village Concerns

### **Your Parish Council and how to contact us**

Nigel Russell – phone 638279	Jill Bliss – phone 638343
Wesley Poole – phone 638622	Jacky Wincote (Chair) – phone 638575
Simon Freeland – phone 638231	Hannah Poole – phone 638622
William Beswick – phone 638758	
	Stephen Cowell (Clerk) – phone 661374 e-mail <a href="mailto:christ-churchcambspc@googlemail.com">christ-churchcambspc@googlemail.com</a>

### **Speedwatch**

PCSO Dave Russ is looking to introduce Speedwatch, which reviews the speed of cars, in the village. If anyone would like to volunteer please contact Dave at the Wisbech Police station or contact the Parish Clerk who will pass you details to him.



# **MINUTES OF THE CHRISTCHURCH PARISH COUNCIL MEETING**

## **MONDAY 13th AUGUST 2012 – MEMORIAL HALL CHRISTCHURCH AT 7:30pm**

Present: Councillors – Jacky Wincote (Chair), Nigel Russell, Jill Bliss, Simon Freeland, William Beswick, Hannah Poole and Will Sutton (FDC) (from item 8). Stephen Cowell (Clerk) and one member of the public were also in attendance.

The member of the public left the meeting after the conclusion of item 6.

### **1. Welcome and Apologies**

The Chair welcomed all to the meeting.

Apologies were received and accepted from Cllr. Wes Poole, Cllr. Cotterell MBE (FDC), Cllr Yeulett (CCC) and PCSO Dave Russ. Cllr. Sutton had attended the Murrow Parish Council meeting earlier in the evening so did not arrive until during item 8.

### **2. Signing of Minutes**

The minutes of the 9th July meeting were signed, by the Chair, as true record of the meeting.

### **3. Disclosure and Declarations of Interests**

Cllr. Bliss declared an interest in payment 9.2 and 9.6 being involved in the management of both organisations.

Cllr. Russell declared an interest in item 8 (change of public right of way Well Fen Farm, being a neighbour) and payment 9.5 being on the board of that organisation.

### **4. Update on action points from previous meeting**

It was reported that:

- Emergency contact details have been passed to FDC
- Two picnic tables have been ordered for the school and will have Queen's Jubilee commemorative plaques fitted in due course
- The work undertaken by Morton & Hall in relation to their recent invoice included plans drawn up at the request of the Highway's Department relating to visibility splays at the Recreation Ground Car Park and on-site meetings with Highway Department staff
- Highway's Department have written to one resident regarding shrubs overgrowing a path and they have inspected the drains in Church Road and will be clearing the drain of rubbish to help water to flow away better.
- The Water Company have agreed to carry out remedial work on Green Lane

### **5. Adoption of the new Code of Conduct**

The Clerk issued the new code to Councillors last month for review.

Its adoption was proposed by Cllr. Russell, seconded by Cllr. Freeland and agreed by all.

Cllr. Bliss has returned her completed Register of interests. **Some councillors requested the Clerk resend the document as they have mislaid their copy.**

### **6. Public Adjournment**

A parishioner asked for some guidance regarding whether the farm track she walks her dog on was a public right of way or a private road. After looking at the Ordnance Survey map the Clerk confirmed that it was not a public right of way. The parishioner also reported some inconsiderate driving along Euximoor Drove that she felt was also in excess of the speed limit.

### **7. Police Update**

The Clerk reported that PCSO Russ has sent his apologies as he is on annual leave. His report included one burglary and one theft. PCSO Russ also reported that he will be starting Speedwatch checks in the Parish and would be grateful for volunteers to assist. He is monitoring Play Areas during the school holidays and reports no trouble or anti-social behaviour in Christchurch. His report also contained details of a property in the Croft that he intends to visit on his return to discuss a number of issues with the residents. A note has been received from a concerned resident about the same resident walking dogs on the Recreation Ground and using abusive language when asked to remove them from the Recreation Ground.

### **8. Correspondence Received**

The Clerk brought to the attention of Councillors:

- Requests for changes to Public Rights of Way at Well fen Farm and Rodham Farm. Following explanations of the changes by the Clerk Councillors supported the requests.
- The Street Lighting Replacement programme briefing on 17th Sept. Councillors expressed concern that the village might lose lights that it or parishioners had paid for. However, it was confirmed that no changes would be made without consultation.

**Continued...**

- The consultation on new Dog Control Orders. The Council agreed that FDC's suggested changes were sensible.
- Highway's Department have received a complaint from a resident about the timing of the forthcoming road closures. They have responded to the complainant and copied the Council in with their rationale for the timing of the work. Members agreed that the work is required as the state of the Sixteen Foot Road is poor and whenever the work had been undertaken it would cause some people inconvenience.
- A resident has asked for another spate of illegal and inconsiderate motor bike and quad bike riding to be raised. It was agreed that details should be sent to PCSO Russ.

## **9. Finance**

The Clerk reported total bank balances of £54,164.15, with cheques written amounting to £915.12 to come from this, and brought to Councillor's attention the earmarked funds (funds that must be spent on specific purposes) that total a little over £33k.

The following items, listed on the agenda, were agreed for payment

- 9.1 Clerk's Salary £183.58
- 9.2 The Heron £65.00
- 9.3 Postage £6.00
- 9.4 Middle Level Commissioners £243.00
- 9.5 Upwell Internal Drainage Board £189.54
- 9.6 Hall Hire (Apr-June) £42.00

Three additional payments were agreed at the meeting - £120.00 for Cemetery Maintenance that the Clerk forgot to add to the agenda but is a budgeted item. £50.00 for the submission of the drainage work request discussed at the July meeting and £170 to FDC for renewal of the Planning Consent of the Sports Pavilion Renovation and Extension. These additional items were also approved by Members.

## **10. General Power of Competence**

The Clerk reported that he has submitted his exam paper for marking. Once he has passed this element of the CiLCA qualification the Council will be able to pass a resolution to use the power.

## **11. Planning Applications**

Members supported planning application F/YR12/0516/F – erection of a detached garage to an existing dwelling at Rosedale 70 Church Road, Christchurch. The Clerk reported that he has obtained an extension to the deadline for the recently received wind turbine application so it can be properly included on the agenda for the August meeting.

## **12. Parish Plan – Update**

Nothing to report.

## **13. Raising of Village Concerns**

The following items were reported/discussed:

- The build up of scrap in the garden of a property on Euximoor Drove that has already been visited by FDC.
- Crown Drove becoming overgrown and difficult to walk along. The Clerk explained that due to budget cuts the County Council have had to reduce the number of times the grass is cut from 3 to 2.
- The state of the Church Wall. It was agreed that Clerk should mention this when he sends the Churchwarden the cheque for Cemetery Maintenance
- Missing bolt on the see-saw. Cllr. Russell reported that Sharman's have ordered all that is required to repair the play park in line with the RoSPA report. It was agreed that Sharman's had made a good job of the work completed thus far.
- The amount of weeds in the landscaped area at the bottom of the Recreation Ground. It was agreed that the Clerk should ask Community Payback if they could assist.

Cllr. Freeland asked if there were any copyright issues with a business using the Christchurch sign within logos or paperwork. It was confirmed there was none the Council knows of.

Cllr. Russell and Cllr. Wincote reported that they agreed, on the Councils behalf, the sale particulars for the land adjacent to the bowls green.

The Chair closed the meeting at 8:20pm

S	P	O	O	N		T	R	A	I	L		S
A		W				E		L		I		T
I	G	N	O	R	E	D		I	S	S	U	E
L		E		U		I		B		S		I
O	R	D	E	R		U	N	I	C	O	R	N
R				A		M				M		
S	A	M	P	L	E		C	I	N	E	M	A
		A				A		D				B
W	A	G	E	R	E	D		I	N	F	E	R
A		N		A		O		O		E		I
I	N	A	P	T		R	A	M	B	L	E	D
V		T		E		E				O		G
E		E	N	D	E	D		C	A	N	O	E

7	3	4	2	9	8	1	6	5
9	1	6	7	5	3	8	4	2
5	2	8	4	1	6	9	7	3
2	9	3	8	6	7	4	5	1
6	5	1	9	4	2	7	3	8
4	8	7	5	3	1	2	9	6
3	7	9	1	8	5	6	2	4
1	6	2	3	7	4	5	8	9
8	4	5	6	2	9	3	1	7

6	8	1	3	4	7	2	5	9
7	2	9	8	1	5	6	3	4
4	3	5	9	2	6	7	1	8
1	7	3	4	6	9	5	8	2
8	5	4	7	3	2	1	9	6
9	6	2	5	8	1	4	7	3
5	9	6	2	7	8	3	4	1
2	4	8	1	5	3	9	6	7
3	1	7	6	9	4	8	2	5

To contact the newsletter team :-

**Telephone** - 01354 638048

**Email** - Advertisements : [adverts@theheron.info](mailto:adverts@theheron.info) / for the editorial team : [editor@theheron.info](mailto:editor@theheron.info)

**Post / by appointment :**

The Heron, The Hollies, March Road, Tipps End, Wisbech, Cambs. PE14 9SH

The information in this newsletter is intended to be useful and informative for readers, opinions expressed in news articles or third party comments do not express the opinions of the publishing team, who strive to maintain impartiality on behalf of The Heron at all times.

## DIRECTORY

Age UK Cambridgeshire	01354 696677
Alzheimer's Society (Fenland)	01945 580480
Cambs Fire & Rescue	01480 444500
Churchwarden - Mrs. D. Symons	01354 638352
Citizens' Advice Bureau , Wisbech	01945 464367
Community Car Scheme (to book a journey)	07902 316360
County Councillor – Fred Yeulett	01354 653763
District Councillor – Mac Cotterell	01945 583744
District Councillor – Will Sutton	01354 638025
Eastern Electricity	0800 783 8838
FACT (Fenland Association of Community Transport)	01354 661234
Fenland District Council	01354 654321
Library – March	0354 0455225
Memorial Hall Caretakers – Mr. & Mrs. A. Murray	01354 638272
Parish Clerk – Mr. Stephen Cowell	01354 661374
Rector - Rev'd Kevin Fitzgibbon	01354 680969
Stagecoach - Peterborough	01733 554571
Stagecoach - Cambridge	01223 423 578
Telephone Complaints	0345 145000
Townley School	01354 638229
Trading Standards	0845 04 05 06
Train Information	08457 484950
Upwell Health Centre	01945 773671
For S Doc (out of hours surgery please ring this Number and you will be through to those on duty)	01945 773671
Water Emergencies	08457 145145
Welle Pharmacy, Upwell Health Centre	01945 774081
Wisbech Fire Station	01945 428600

**\* New non-emergency Police phone number - 101\***