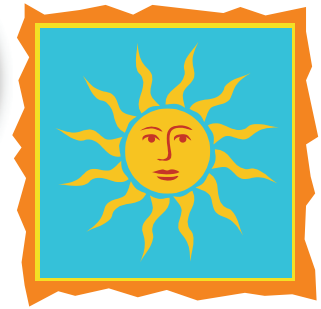


*Christchurch Village Newsletter*

**August 2013**



Welcome to your August edition of The Heron. Summer is with us and the holidays are in full swing.

Let us take this chance to ask you all to be 'noise aware' during these hot summer days. Open windows and our beautiful flat countryside are conducive of noise carrying further than you think. Everyone wants to enjoy the summer holidays and light evenings with the odd party or BBQ but be aware that your voices, radios and music carry much further than just the boundary of your garden. Be considerate of your neighbours and respect that they may want to enjoy some countryside peace and quiet, (or even just have to get up early in the morning).

We would also like to pass on the congratulations from Wendy Yates to three ladies of the village who took part in the 'Race for Life' in Cambridge last month. Sandra Kaye, Tracey Day and Margaret Beswick all joined in the fundraiser on 21<sup>st</sup> July to raise much needed funds for Cancer Research, all three ladies are still collecting sponsorship, and if you didn't get the chance to sponsor them before the event they are sure to be happy to accept any late donations towards their terrific efforts. Also we must mention a big thanks to David Yates for being their driver for the day.

For us here at The Heron, August marks our first full year of looking after the newsletter and making sure we bring you all the news and local interests to you every month. We hope you have enjoyed our efforts for the last year, and look forward to thinking of more ways to fill its pages over the coming twelve months.

Enjoy the sunshine everyone.

Paul and Mandi  
Editors.



### **Big Thanks**

To everyone who supported the marvellous night of Curry and Quizzes on June 28th, with the Friends Of Townley School. A very enjoyable evening for everyone, and raised £278 for the school. Well Done!

## **Miracle escape for man in 80s after two-vehicle collision along Fen drain**

A MAN in his 80s had a miraculous escape this morning after a road sign stopped his car from plunging upside-down into a Fen drain in a two-vehicle collision.

The collision happened at about 7.30am along the Sixteen Foot Bank at the junction with Padgett's Road, Christchurch.

Fire and ambulance services were quickly on the scene. They were followed by the Magpas Helimedix who flew to the scene in the rescue charity's air ambulance.

A man in his 80s was driving a Vauxhall Corsa car which ended up on its side close to the water's edge. The only thing that stopped the car from rolling into the river was a road sign.

Emergency crews cut the man from the car before putting protective measures in place for the man's neck.

An East of England Ambulance Service Trust spokesman said:



*Emergency crews attend to the man after his car was stopped from entering the Sixteen Foot Drain by a road sign.*



*Emergency crews attend to the man after his car was stopped from entering the Sixteen Foot Drain by a road sign.*

*"We were called at 7.30am and a male in his 80s was taken to the Queen Elizabeth Hospital, Kings Lynn with minor injuries"*

A woman who was in the second car was also assessed by the Magpas team and was uninjured.

Magpas doctor Jon Birks said,

*"We wish our patients well. Both of them were extremely lucky not to have suffered more serious injuries, given the nature of this incident"*

*"It was also fortunate that the man's car didn't go into the river, but there was a road sign to block the vehicle's path"*

Article courtesy of CambsTimes

### **Yard Sale**

**Sat/Sun 17th and 18th August 2013  
10am - 4pm**

various items including tools, gardening equipment and household items.

at Fourways on the junction of Padgetts Rd, Church Rd and Scott's Rd.

# **The Care Network**

## **Could you be a Community Navigator?**

### **Do you wonder where you can go for that little extra help or support?**

Community Navigators are local volunteers who help older and vulnerable people find their way to activities or services which they would enjoy or find useful.

Local charity Care Network Cambridgeshire is pleased to have received funding to deliver a 3 year Community Navigator Project. The project aims to help older people find their way to activities and services such as:

- Joining a local friendship club, lunch or activity group
- Modifying their home or get mobility aids
- Obtaining a financial health check to maximise income
- Getting help at home to support them through an illness or with one off task
- Accessing a community car scheme for a lift to activities and appointments

These are some examples of how we can help.

*'Person in Whittlesey aged 83 living alone. Partially sighted and had recently had to get rid of her dog so was starting to feel lonely, with little social life and external interaction. She also stated she didn't know where else she could have found this information.'*

*'She was referred to a local friendship club and sewing group by the local Community Navigator. This navigation will reduce social isolation by giving this person the opportunity to meet other people in a safe and friendly environment. This is especially important having recently had to rehome her dog and the associated distress.'*

*'Without support this person could have potentially carried on at home and got increasingly lonely. This would have led to depression and other issues leading her to contact GP for anti depressants and associated expensive treatments and a lonely end of life.'*

*'A 60 year old was involved in relationship split and was looking for advice. She needed advice particularly in relation to the estate and pensions. She is not currently in receipt of any benefits so could have been left without a home or money.'*

*'A Community Navigator was able to provide her with information on details of solicitors who still operated a legal aid/ fixed fee scheme and briefly discuss benefits that may be available and suggested she contacted CAB or similar.'*

*'She did say she would probably have gone to CAB anyway but as this is only intermittently available in this area she would have had to wait at least a week to do this. Because of the regular availability of the navigator they were able to ease some of the stress through provision of this advice and gave her options to be considering in the meantime.'*

Making the most of local activities and services is a good way to keep fit, active and independent, but not everyone knows what is available. The Care Network Community Navigator Project is supported by Cambridgeshire County Council and will point the way to local community activities and also statutory and voluntary organisations. The service is free and there is no need to make an appointment.

We have Community Navigators operating in all the towns and some villages in Fenland. We are still looking to find new Community Navigators so if you would like to support older people in Christchurch and surrounding areas, please contact your local Co-ordinator Tim Barzycki for more information on 01945 589953 or 07436 809266 or email: [fens.navigators@care-network.org.uk](mailto:fens.navigators@care-network.org.uk) or seek out one of your local navigators now.

Care Network can also offer a Help at Home service which is a short term practical help in your home. For instance after a hospital stay or illness at home we can help fetch a prescription, collect shopping, arrange other services or community groups or just have a chat. In addition we can offer one off tasks such as changing a light bulb, emptying contents of high cupboards, clearing an area before repairs or help filling in forms.

This service is free and can be available for up to three weeks.

For this service please call 01354 694413.

The Elm, Fridaybridge, Coldham and Christchurch is supported by Care Network.



# ISLE OF ELY SOCIETY FOR THE BLIND

(Est 1923)

Registered Charity Number 201355

**Caring for the needs of visually impaired people.**

Isle of Ely Society for the Blind is a registered charity established in 1923 to care for the blind and partially sighted within what was the old county of the Isle of Ely, prior to it being amalgamated with Cambridgeshire. The Society relies entirely on voluntary donations, legacies and grants to fund its vital work. We offer the following services:



## Home Visits

to each of our members on registration with the Society and also to our existing members on request.



## Information and Advice

on low vision aids, equipment and services that are available at the March office, also at Doddington hospital (Weds) and the eye clinic North Cambs hospital Wisbech.



## Radio Cassett/Players

we are agents for the British Wireless Association for the blind, as well as talking newspapers and Braille literature.



## Society Activities

the Society organises various social activities throughout the year, including summer outings and Christmas parties. Each month our members enjoy meeting for lunch in March, Wisbech and Ely. Liaise with other blind societies and organisations.



## Keep in Touch

we keep in regular contact with our members through newsletters and birthday cards and we are always available to help with any problems they may encounter.

## WHERE CAN YOU FIND US?

**March Town Hall,  
Market Place,  
March,  
Cambs. PE15 9JF  
☎: 01354 656726**

**If we can help you or someone you know, please contact us at the address or telephone number above.**

## Upwell Health Centre Patient Participation Group

Debbie Craven,  
prescribing Advisor West Norfolk Clinical Commissioning Group

*Presents*

*"Are you making the best of your medicines?"*

At Upwell Health Centre Waiting Room

**Thursday September 12th at 7.30 pm**

All Welcome

**10%  
DISCOUNT**  
on collection

# *Diana*

TANDOORI RESTAURANT

TAKE  
AWAY  
SERVICE ALSO  
AVAILABLE

t. 01354 661719 t. 01354652347



*It's our 12th Anniversary on 21st August*  
**SO BOOK NOW For just £19.90 per person**

You can eat much as you like as well as  
FREE drinks (subject to availability)

**Daily Special – Sunday – Wednesday only £8.95**  
**Thurs, Fri & Sat for only £10.95**

Choose from our main menu

Any One Starter • Any One main • Side Dish to Share • Any One Rice • And A Naan to Share  
Dine in only

**FREE DELIVERY on orders over £10 for March Area only**  
**FREE DELIVERY on orders over £20 for Wimblington, Doddington, Chatteris & Guyhirn**

Opening Hours - Monday-Saturday 5 - 11pm & Sundays 12 - 9pm  
PLEASE BOOK IN ADVANCE - All offers subject to terms & conditions

Bookings can also be made anytime via email -  
shamsur\_75@hotmail.co.uk or by text to 07882 020941  
70 Dartford Road March PE15 8BQ





## Garden Club July 2013



'Cor' what a storm on the eve of our club night with Peter and his owls!

The hall was flooded and we had to cancel our evening. Peggy and Bubbles quickly phoned members and prevented a disaster! Sorry darlings, but we just couldn't arrange an alternative meeting place.

I must at this point say a very big thank you to Will Sutton. William and Margaret who got together mopped up, and spent a good while getting rid of the storm water from the hall floor which was in a bit of a mess.

It has certainly showed up how we will miss our club meetings when the hall is closed, and we have to miss out at the pavilion if a bowls match is in place, or builders are making changes at the pavilion.

Our next club meeting is **Members Night** for our buffet, this is always enjoyed and is special! So can members make a hat to suit any purpose and give it a title. A prize will be awarded **August 27<sup>th</sup>** is our summer buffet, we would have sent our refreshment list round but could members who like to bring something for our table get in touch with Bubbles 01354 638024

Meanwhile enjoy your garden remember stop, sit and look at your efforts and relax. I have missed seeing you this month and look forward to our

### Summer Buffet August 27<sup>th</sup>

Don't forget the Hat !!! Can you find a photo from those teenage years let's see it!

Our usual contact no: 01354 638024

*Bubbles*



### **PRECIOUS LITTLE FRIENDS PET SERVICES**

*By Katie Green*

Dog walking, Pet Sitting and other available; please enquire.

I am a friendly village resident and animal lover offering various pet services, including dog walking. FREE MEET AND GREET available to all new clients as it is important to ensure you and your pet are 100% happy with me.

You can contact me either via email or by phone.

Email: **preciouslittlefriends@gmail.com**

Phone: **07896006003** or **01354 638756**



Do you have something you would like to share with the community, or have any comments on articles published in The Heron ? If so please feel free to contact us by mail, e-email or telephone, we would love to hear from you.

Ed.

## **CURLING GROUP**

Adult (over 18 yrs)

Curling Group to start on  
**Monday 5th August**

1.30pm – 3.30pm

In the Memorial Hall  
£2 per person  
Tea and Coffee available



Equipment provided just bring yourself  
and a smile.

For details contact

Jean Cowles 01354 638328

Margaret Beswick 01354 638758

Thank you to all those who rung with  
an interest. All welcome.

## **Need any Odd Jobs Doing?**

Car Washing, Lawn mowing  
Garden Tidying, Dog Walking  
Etc

We are offering our services to  
raise funds for our local Skate  
Park in Christchurch.

All through the  
summer holidays  
Mon—Fri  
10am –4pm



Please ring or text  
Montgomery 07936371340

# **P.R.PARKER**

## **PAINTING AND DECORATING**

SPECIALISTS FOR OVER 40 YEARS  
HOUSE ~ SHOP ~ FLAT ~ OFFICE ~ ETC  
INTERIOR ~~~~~ EXTERIOR

PAPER HANGING  
SKIRTINGS  
ARCHITRAVE  
WALLS ~ CEILINGS  
WINDOWS  
SPINDLE ~ STAIRS  
COVES  
ETC

WINDOWS  
DOORS  
FASCIA BOARDS  
RENDERING WALLS  
PEBBLE DASH WALLS  
WROUGHT IRONS  
FENCES  
ETC

FREE ESTIMATES ~ HIGH STANDARDS

**TEL :- 01354 638380**

## **CHRISTCHURCH WOMEN'S INSTITUTE NEWS**



### **Minutes of the July 9th 2013 WI Meeting**

Peggy welcomed members and visitors.

Apologies were received Belinda, Sandra Kay, Margaret Hayes, Beryl and Anne. Minutes were signed .

Correspondence A letter from board of trustees asking for two of our members to sell tickets at the October Federation Day was read out. No members volunteered.

The Federation Day Questionnaire was filled in. A letter has been received from Margaret Sparrow thanking members for their help at the recent flower festival.

Our speaker Bill Wellbourne gave an interesting talk with slides on the history and recovery of WW2 aircraft in Fenland. He had many anecdotes to tell of the personnel involved which made for a fascinating evening.

Birthdays. Doris W, Val, Kath and Florrie. Kath and Florrie who were both 90 were each given a bouquet of flowers and members toasted them with a glass of sherry and a slice of birthday cake.

#### **LOCAL HAIRDRESSER**

Fully qualified in all aspects of hairdressing including:-

\*~\*CUTS \*~\*

\*~\*COLOURS ~PERMS \*~\*

Wella and Tigi Bed Head products used.



Call Julie on

07766558081 / 01354638768

**17 YRS SALON EXPERIENCE**

Next Month. A talk on the Ouse Washes. Competition. Fens Landscape Photo. Raffle prize rota. Sandra L, Wendy, Peggy and Tracy. Competition Results. No competition this evening due to lack of time.

Peggy Warby .President

**NEED TO ADVERTISE?**

**ONLY NEED A ONE OFF OR  
SMALL PRIVATE ADVERT?**

**WE CAN GIVE YOU A SMALL SPACE  
LIKE THIS FOR ONLY £2, MAX 35  
WORDS.**

**EMAIL  
ADVERTS@THEHERON.INFO**



# Delph House *news*

*August 2013*

## **Music for Health**

On the last Friday of July residents enjoyed a Music for Health Workshop, led by Wendy. This combines music and reminiscence and residents were actively involved.

## **Other activities**

With the good weather recently we have been making more use of the garden. Residents have been staying out in the garden either under the shade of the walnut tree or in the summer house for much of the day.

Our volunteers now visit regularly each week. We would still welcome any additional volunteers; please get in touch if you may be interested.

## **Respite stays**

We continue to receive enquiries for respite stays: usually for one or two weeks while the regular carers in the family are away. Our respite room is now booked for stays in the next two months but we still have periods available.

We also offer day care where local residents can stay with us for the day, joining in with residents' activities.

## **Current topic: Mental Capacity**

There are many families looking after some-one who seems confused and may have dementia. This person may need to make a decision perhaps for example about where they should live. There may then be a question of whether the person can decide for themselves or should a family member decide for them?

The Mental Capacity Act (MCA) is the foundation of deciding this: it is binding on all of us, and it protects the rights of people who can make their own decisions just as it protects those who might lack the capacity to make some decisions.

This is because the first principle of the MCA is that we must assume people are able to make their own decisions unless there are good reasons to think they may not. People are protected from being stereotyped on the grounds of their age, their diagnosis, or their appearance.

And then the second principle tells us to do everything we can to improve people's ability to make their own decisions - by explaining information clearly, being prepared to repeat it patiently, giving people time and space, and communicating with them in the best possible way for that individual, at the optimum time of day for them, and with the support that will help them.

The third principle stops us being 'nanny knows best' by reminding us that just because someone makes a decision that other people think is unwise or eccentric, that of itself doesn't mean that the person lacks capacity. We have all made unwise decisions in our own lives, and the law protects our right to do so, if we're not harming other people - provided we have the mental capacity to make that decision.

The fourth and fifth principles tell us that, if we must make decisions for someone else, those decisions must be made in the best interests of the person (rather than in the best interests of the person's family), and that any intervention in a person's freedoms must be the least restrictive option that can be found to meet the need and proportionate to the risk of harm to the person and the seriousness of that harm.

The MCA Code of Practice lays out the elements that protect the rights of vulnerable people.

See: [www.justice.gov.uk](http://www.justice.gov.uk)

[www.delph-house.co.uk](http://www.delph-house.co.uk)

Tel: 01354-610 300 - Wisbech Road Welney PE14 9RQ - [info@delph-house.co.uk](mailto:info@delph-house.co.uk)



## **CHRISTCHURCH CRAFT CLUB**

July meeting saw Wendy Yates demonstrating 'Cards for Men', where everyone made a card representing a shirt and tie which was great fun. Craft Club welcomed a new member from Tipps End ( always lovely to see new faces) and the normal enjoyable evening and raffles ensued.

As usual there is no Craft club in August so we look forward to seeing you all for an evening of 'bring and make' on September 3rd. Why not come along and join us - everyone is welcome, no matter where your interest in craft lies. Entrance is £1.00 plus 50p for raffle and 20p for refreshments.

Please come and join us you don't have to come to every meeting! Meetings are held on the first Tuesday in the month, starting at 7.30 pm in the Memorial Hall. For more information ring Wendy Yates on 01354 638448.

### **Grass Topping**

Weeds /Reeds /Any Rough  
Ground  
topped with tractor and 6ft  
topper  
also log splitting and cutting  
Call Chris on 01354 638126

### **Pilates**

We are please to announce  
that Pilates at the  
**Townley School Hall**  
starts again next term

### **The Little Local**

Groceries and Newspapers, Fresh Bread,  
Fruit, Vegetables available.

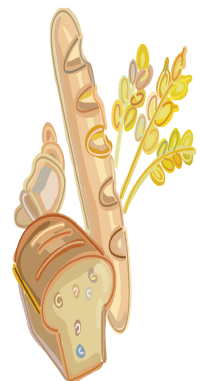
**Open 7 days a week.**

MON-FRI 7 am - 5.30 pm

SAT 8 am - 5.00 pm

SUN 9.30 am - 11.30 am

Church Road, Christchurch.



# TOWNLEY SCHOOL

Christchurch, Wisbech, Cambs. PE14 9NA

Email: [office@townley.cambs.sch.uk](mailto:office@townley.cambs.sch.uk)

Website: [www.townleyschool.org.uk](http://www.townleyschool.org.uk)

Tel/Fax: 01354 638229



On Wednesday 3<sup>rd</sup> July 2013 pre-school and class one children enjoyed a giant picnic together as part of the transition. It was cloudy to start with but by the time we had all finished eating the sun was shining. We had a lovely picnic and liked making new friends. Some of our teddy bears even made friends with each other! Take a look at more photos on our website.



**Year 4/5/6 Residential Visit to Mepal was enjoyed by all.** During the day the children experienced a range of different activities including: Kayaking / Canoeing, Rock climbing, Trust Trails, Archery, Trampoline / fencing, Raft Building. There are lots more photos on our website!

## Diary Dates

22nd July –Year 6 Leaver's Assembly

23rd July – Whole School Visit  
and last day of term.

4 Sept - Autumn Term begins

25 Oct - break up for half term

5 Nov - Back to school

20 Dec - Break up for Christmas Hols

*See our website for full details of  
Term times for 2013/14*



There are lots more photos and information of what our school has been up to on our website.



July 2013



**PAUL BRAYBROOKE  
OIL FIRED BOILER ENGINEER**

**BOILER SERVICING**

**BREAKDOWN SERVICE**

**OIL TANKS REPLACED**

**Telephone 01353 777788**

**Mobile 0794 6735691**

**Beauty Treatments  
By  
Jane**

**N.V.Q. – i.b.d. – Babtac**

**LCN Microdermabrasion  
Facials**

**St.Tropez Spray tanning  
Gel pedicures  
Shellac manicures  
Week-end & semi permanent  
eyelashes**

**Rose Cottage,  
Christchurch  
Telephone: 01354 638378**

**10% DISCOUNT ON  
PHONE ORDERS  
OVER £14.00**

**Navrady's**

**OF UPWELL  
GOOD FOOD  
GOOD VALUE  
105 School Road  
Upwell Wisbech**

**01945 772398**

## SANDRA & BARRY KAY

Soft Furnishings, Curtains,  
Loose Covers, Bedspreads,  
Hard and Soft Pelmet

All hand made to order  
using your own fabrics  
Fitting Service  
Tracks and Poles supplied

Conservatory, Roof Blinds  
Specialist

All types of Blinds fitted

Tel: Sandra 01354 638478  
Barry 07967 818364

Maximise the enjoyment of  
your home

with the professional help of

**Brimstone**  
Garden Design Services

Design . Development . Maintenance  
Traditional and Modern Garden  
Styles  
Formal . Cottage . Oriental . Organic

Contact Cliff for free advice

01354 638 217      078 080 78518  
[cliff@brimstonegardendesign.com](mailto:cliff@brimstonegardendesign.com)

## HCI Solutions Ltd

Helping you get the most from your PC

For friendly no nonsense help and advice,  
why not give us a call



**Hardware installations / upgrades    Software Installations    Home Network set-ups    Diagnostics**

**\*\* £35 First diagnostic hour \*\* Half-Hourly rates \*\* PC Service - £42 \*\* Web Design & Admin services \*\***  
Just £17.50 half hour

HCI Solutions Ltd,  
Tipps End, Wisbech,  
Cambs. PE14 9SH.  
01354 638048  
07917 583086

[www.hcisolutions.co.uk](http://www.hcisolutions.co.uk)

HCI Solutions Ltd is a family run business and is based in Tipps End. We have over 20 years experience of fixing and upgrading computers and providing software and network installations. We are happy to collect your PC and return it for **FREE** up to a maximum of a 10 mile round trip or for a nominal fee of 35ppm for excess mileage. If the type of repair/upgrade required permits it, we can carry out the work at your home.

HCI Solutions Ltd Registered in England and Wales No: 7527931 VAT Registered : 108 1519 37





# **GENERAL BUILDING AND MAINTENANCE**

**HOUSE ~ FLAT ~ SHOP ~ OFFICES ~ ETC**

## **PLASTER**

Inside and Outside  
Walls - Ceilings  
Arch  
Plaster Board  
Coving  
Rendering  
Pebble Dash  
etc.

## **PLUMBING**

Bathroom Fitted  
Hot Water Tank  
Cold Water Tank  
Sink - Shower  
Guttering  
Drainage  
Block Damage  
Repair Leak  
etc.

## **GLAZING**

Repair  
Broken Window  
Mirrors  
etc.

## **PAINTING & DECORATING**

Windows  
Doors  
Skirting  
Ceiling - Walls  
Covings  
Fascia Boards  
Clean Gutter  
Ceramic Tiles  
Floor - Walls  
etc.

## **BRICKLAYER**

Brick Work  
Block Work  
Block Paving  
Crazy Paving  
York Stone  
etc.

## **ROOFING**

Repair Leak  
etc.

## **CARPENTRY & JOINERY**

Windows  
Doors & Mortice Lock  
Garage Doors  
Hardwood &  
Softwood Floors  
Spindle & Stairs  
Moulding  
Architrave  
Skirting  
Fire Proof Doors  
Security Doors  
Partition Walls  
Fence Gates  
etc.

**ESTABLISHED 1978 - FREE ESTIMATES**

**P. R. PARKER**

**TEL : 01354 638380**





# CHRISTCHURCH ELECTRICAL



Simon Freeland Hill Farm 3 Church Road Christchurch PE14 9PQ  
Tel: 01354 638802 Mobile: 07727 046439

- All domestic electrical installation, inspection & testing work undertaken.
- No job is too small (Minimum ½ Hour Charge).
- Free quotations / estimates.
- Local rates with additional village discount.
- Six Year Warranty Offered.



Electrical Safety  
Register

incorporating



[www.elecsa.co.uk](http://www.elecsa.co.uk)

[www.trustmark.org.uk](http://www.trustmark.org.uk)

[www.electricalsafetyregister.com](http://www.electricalsafetyregister.com)

Do you want:

## Help with your computer?

would you like someone to:

Fix your computer or recover lost speed?

Set up a new computer for you, dispose of the old PC, after security wiping data?

Sort out Internet connection and problems?

Provide a course of lessons on using your computer for a range of activities?

Call outs to your home for problem solving - £45/hr

Lessons on your own PC - four 1 hour lessons - £99

Work on your PC at our workshop - only £30/hr\*

\*(collection and return - £45)



**PC Life Support**

over 25 years  
experience  
supporting  
computer  
users

[www.pclifesupport.co.uk](http://www.pclifesupport.co.uk)  
[info@pclifesupport.co.uk](mailto:info@pclifesupport.co.uk)

**Call 01354 638683 to find out more**



## *The Dun Cow*

Christchurch, Wisbech, PE14 9PG  
Tel: 01354 638323

**Monthly Quiz  
Nights  
Variety of Great  
Prizes**



### **Opening Hours**

**Monday & Tues** 5pm—11  
**Wed & Thurs** 12pm—2pm 5pm - 11  
**Fri & Sat** 12pm—12 midnight  
**Sunday** 12pm—10 pm



Darts every  
Monday  
At 8 pm

### **Meals Served**

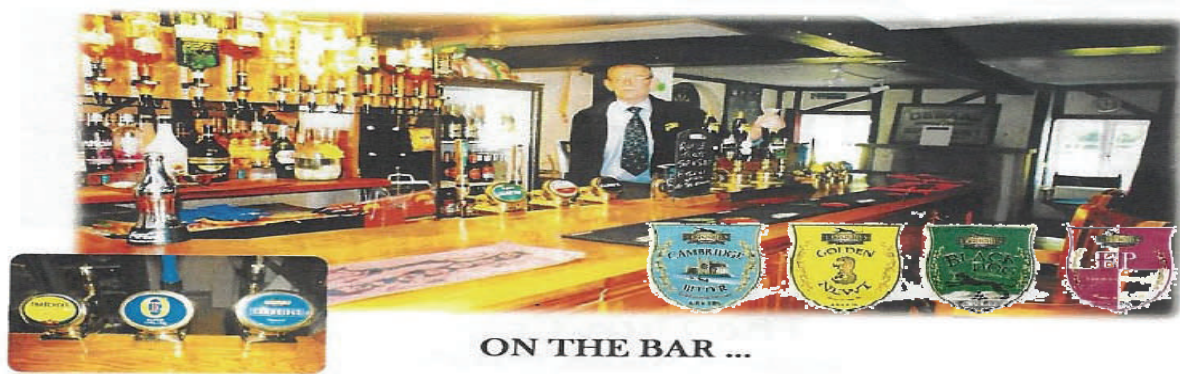
Tuesday/Thursday/Friday 7pm –9pm  
Sunday Lunches 12pm - 4pm ( Booking advisable)

BURGERS ARE AVAILABLE ALL DAY EVERYDAY FROM £3.25

### **Dun Cow Diary**

**Saturday 3rd August 2013—Village Olympics** Fun Day For All The Family

**Saturday 7th September 2013 - Karaoke & Bingo**

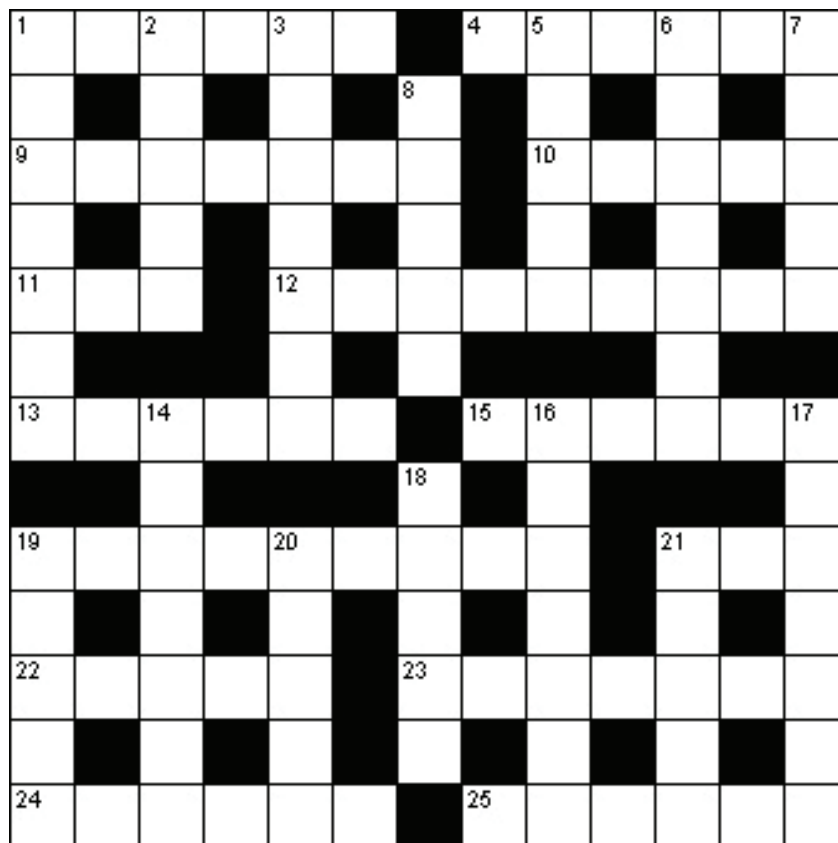


ON THE BAR ...

**Black Dog Smooth, Cambridge Smooth, Kronenbourg, Guinness,  
Thatcher's Cider, Fosters,  
Guest Ales, Soft Drinks and various Wines and Spirits.**

## Across

1. Afternoon nap in Spain (6)
4. Wide street (6)
9. Coherent (7)
10. Speak (5)
11. Playing card (3)
12. Exactly the same (9)
13. Not as strict (6)
15. Armed thief (6)
19. Set up or found (9)
21. Australian flightless bird (3)
22. Stories (5)
23. Chosen by vote (7)
24. Fervid (6)
25. Basement (6)



## Down

1. Save from destruction (7)
2. Bird of prey (5)
3. Haptic (7)
5. Strongroom (5)
6. Observed (7)
7. Join up (5)
8. Hints (5)
14. Resolved (7)
16. Sports contestant (7)
17. Booming noise (7)
18. More judicious (5)
19. Additional (5)
20. Large shaggy bovid (5)
21. Exalt (5)

UKP016

## Medium

				6		3	7	
		2				6		5
		1	9		3			2
		7	6	9				1
9				3				4
5				4	2	7		
1			5		8	9		
7		9				2		
	5	6		2				

MP15

## Hard

	4				6		3	
7						6		9
	5		3	9				
3			5	6	2	8		
		8	7		3	4		
		1	4	8	9			5
				2	8		4	
9		7						2
	3		6				1	

HP15





## **Parish Church Services**

4th August	11:00am	Revd K. Fitzgibbon	All-Age Worship
11th August	9:30am	Revd S.Tooke	Holy Communion
18th August	6:30pm	Revd K. Fitzgibbon	Evening Prayer
25th August	11:00am	Mr S.E. Tooke	Morning Prayer
1st September	11:00am	Revd K. Fitzgibbon	All-Age Worship

### **DATES FOR YOUR DIARY**

Saturday 10th August, we are holding a coffee morning in our beautiful church building, from 10am to 12 noon. There will be stalls, games, a raffle and goodies for sale to eat. Please come along to this informal occasion and support us.

Saturday 23rd November, 2-4pm, Christmas Fayre in the village hall.

Daphne and Andrew.

**A. R. CLINGO**  
**Funeral Director**

**Business**  
**Incorporating**  
**ROLAND SINGLETERRY,**  
**CHRISTCHURCH**

**PINFOLD HOUSE, UPWELL**  
**Telephone WISBECH 772502**

**Private Chapel of Rest**  
**24-Hour Service to all areas**

## **Christchurch Parish Council News**

**Draft agenda for next Council meeting 7:30pm, Monday 12th Aug 2013, Memorial Hall, Church Road.**

**Public and Press are welcome and can speak to the Councillors during the Public Adjournment.**

1. Open, welcome and apologies
2. Signing of previous meeting's minutes July 2013
3. Disclosure or declaration of interests
4. Update on actions from previous meeting
5. Public Adjournment (time to raise issues affecting you with the Council)
6. Police Update
7. Correspondence
8. Finance
9. Review of Planning Applications
10. Parish Plan
11. Reporting of Village Concerns

*Your Parish Council and how to contact us*

Nigel Russell – phone 638279	Jill Bliss – phone 638343
Wesley Poole – phone 638622	William Beswick – phone 638758
Simon Freeland – phone 638802	Hannah Poole – phone 638622
	Stephen Cowell (Clerk) – phone 661374 e-mail <a href="mailto:christchurchcambspc@googlemail.com">christchurchcambspc@googlemail.com</a>

### **Bushes and plants overgrowing paths**

The Council would like homeowners to consider those who use footpaths, especially those with prams or who use wheelchairs, and ensure that hedges, bushes and shrubs are cut back so that people can pass on footpaths unimpeded.

**MINUTES OF THE CHRISTCHURCH PARISH COUNCIL MEETING  
MONDAY 17<sup>th</sup> JUNE 2013 – MEMORIAL HALL CHRISTCHURCH AT 7:30pm**

Present: Councillors – Nigel Russell (Chair), Jill Bliss, Simon Freeland, Hannah Poole, Wes Poole, William Beswick, Mac Cotterell MBE (FDC), Will Sutton (FDC) and Fred Yeulett (CCC).  
Stephen Cowell (Clerk) and 5 members of the public were also in attendance.

**1. Welcome and Apologies**

Apologies were received and accepted from PCSO Russ.

**2. Signing of minutes**

The minutes of the 13th May meeting were signed, by the Chair, as true record of the meeting.

**3. Disclosure and Declarations of Interests**

None.

**4. Update on action points from previous meeting**

The Clerk reported that:

- FDC have finally responded to the Council regarding the missing Clothing Recycling bank and Mr Adam Pratt is looking into the matter.
- Following liaison with Members a large 'No Dogs' sign has been purchased for the Recreation Ground and arrangements need to be made for it to be fitted to the fence at the Crown Drove entrance.
- The Asset list has been amended to reflect the actual number of street lights owned by the Council.
- PCSO Russ has been made aware of the issues with Quad Bike riders.
- A notice regarding the Councillor vacancy, following the resignation of Jacky Wincote, has been posted for the required time and no By-Election has been requested therefore notices will be placed on the notice board and in The Heron to try and fill the vacancy by co-option.

**5. Public Adjournment**

The following subjects were raised and discussed:

- The lack of a clothing recycling bank and that the bottle banks are again full.
- The poor quality of verge cutting along Crown Avenue – Cllr. Yeulett was asked to raise this with the appropriate County Council department.
- Cllr. Yeulett reported that following the recently elections the new County Council was in its infancy and the only subject he reported on was the liaison with the Chair of the Welney Parish Council by him and Cllr. Sutton over flooding of the Welney Wash. It was reported that some Norfolk Councils are to fund 3 interactive signs on the Norfolk border of the Wash to warn motorists of road closure in a more effective way when it is flooded. Councillors Yeulett and Sutton are discussing funding for 3 signs on the Cambridgeshire border with their County and District Council colleagues.
- Cllr. Cotterell reported on the very successful Golden Age Surgery held at Christchurch on the 12th June and thanked Parish Councillors for attending. He went on to report that 30 residents attended the function and around a dozen of those were helped with claiming the correct level of benefits that will benefit them by around £7.8k per annum in total. A total of 12 blood pressure and health checks were completed and emergency resuscitation training was provided. It was agreed by all that it had been a successful event and Cllr. Cotterell was thanked for arranging it to be held at the village hall.

**6. Police Update**

The Clerk has distributed PCSO Russ' report that had three items listed which were thefts from a barn, a metal storage container and from a horse paddock. Cllr. Russell reported that the metal container has been returned. It was also reported that the next visit of the New Horizon Outreach Vehicle to Christchurch will be on 20th August from 8:30am to 10:30am.

Continued ....



## **7. Correspondence Received**

The Clerk brought to the attention of Councillors:

- The recently received update on the King's Lynn & West Norfolk Local Plan.
- FDC's letter regarding the lapse of the building regulations for the proposed Sports Pavilion renovation and details of the architect's resubmission.
- Cllr. Russell informed members of correspondence he has had with Morton and Hall and the Drainage Board regarding the drainage of water from the Sports Pavilion once it has been extended and he reported that he has agreement that it can drain into the nearby dyke at no cost.
- Two companies have asked for access to the Sports Pavilion to help them prepare quotes for the renovation and Cllr. Sutton agreed to arrange this.

Cllr. Freeland questioned that now the Council has offers for all three building plots, whether there are now the additional funds available to either adapt the existing plans to create a community building that could be used for more activities, or to re-visit the potential option of a new build.

The pros and cons of this were discussed as were the likely increases in costs and it was agreed to revisit this subject should the quotes for the existing plans indicate a large surplus of funds.

It was also questioned why the Outdoor Bowls Club were to have such a large space within the building to themselves. The Clerk explained that this is a misunderstanding and that it has been agreed that the Bowls Club will have the use of a space similar in size to that which they currently enjoy, and have maintained to a high standard for many years, but that that area would be also available for use by other groups at times when there are no bowls matches or functions and that would be for the majority of the time.

## **8. Finance**

**8.1** The Clerk reported bank balances of £52,997.84 with cheques issued to the total of £5,471.02 to be paid from this. It was arranged to transfer an extra £2,000.00 from one of the savings accounts to the current account help cover these cheques.

The Clerk reminded Members that around £32k was earmarked for Play parks.

**8.2** The following items, listed on the agenda, were agreed for payment

**8.2.1** Clerk's Salary £183.78

**8.2.2** The Heron £70.00

**8.2.3** Postage £6.90

**8.2.4** Christchurch PCC £122.50 (Cemetery Maintenance)

**8.2.5** Hall Hire £42.00 (3 months Apr-June)

**8.2.6** E Mason & Son £720.00 (Grass Cutting)

**8.2.7** No Dogs Sign £50.88

**8.2.8** FDC £291.36 (Resubmission of Building Regs application)

**8.2.9** Morton & Hall Consulting Ltd £1,440.00 (Building Specification Fee)

There was one additional item for payment this being £2,452.00 to the solicitors regarding expenses related to the sale of building plots. It was pointed out by the Clerk that Cllr. Russell had obtained a discount of £466.00 on the original invoice.

## **9. Planning Applications**

There were no applications to review.

Continued...

## **10. Parish Plan – Update**

Cllr. Russell suggested that Members should consider moving the Play Park nearest Upwell Road to another location in the recreation ground prior to building commencing on the Sports Pavilion. The Clerk mentioned that in the plans for the renovation that area is earmarked for car parking and that there is circa £32k section 106 money in the Council's accounts for the new play park. Following a discussion it was agreed that the Clerk should find the results of liaison with the Townley School pupils that was undertaken some time ago to understand what sort of play park the children would like and start to obtain costings. It was agreed that the best location would probably be between the current wooden play park and the basketball hoop. It was also agreed to try and re-use some of the existing fencing.

It was also felt that consideration should be given to providing additional obstacles of the skateboard park with the £6k remaining from that project.

## **11. Raising of Village Concerns**

The following items were reported/discussed:

- It was agreed that a cleanup of the village specifically the Recreation Ground was required and a date of 6th July was set for it. People to meet in the Recreation Ground Car Park at 9:30am. The Clerk was asked to get the use of the Street Pride pickers and gloves and put a notice in The Heron.
- Cllr. Russell again reported pot holes in Euximoor Drove that in some cases are 4 to 5 inches deep. Cllr, Yeulett was asked to discuss this with County Highways as pot holes elsewhere are being filled in quickly but these in Euximoor Drove were first reported months ago.
- It was agreed that the vacancy for the Clerk's position should be advertised in The Heron and the Fenland Advertiser.

The Chair thanked all for attending and closed the meeting at 8:35pm

S	I	E	S	T	A		A	V	E	N	U	E
A		A		A		C		A		O		N
L	O	G	I	C	A	L		U	T	T	E	R
V		L		T		U		L		I		O
A	C	E		I	D	E	N	T	I	C	A	L
G				L		S				E		
E	A	S	I	E	R		B	A	N	D	I	T
		E				W		T				H
E	S	T	A	B	L	I	S	H		E	M	U
X		T		I		S		L		X		N
T	A	L	E	S		E	L	E	C	T	E	D
R		E		O		R		T		O		E
A	R	D	E	N	T		C	E	L	L	A	R

4	8	5	2	6	1	3	7	9
3	9	2	7	8	4	6	1	5
6	7	1	9	5	3	4	8	2
2	4	7	6	9	5	8	3	1
9	6	8	1	3	7	5	2	4
5	1	3	8	4	2	7	9	6
1	2	4	5	7	8	9	6	3
7	3	9	4	1	6	2	5	8
8	5	6	3	2	9	1	4	7

8	4	9	2	5	6	1	3	7
7	2	3	8	4	1	6	5	9
1	5	6	3	9	7	2	8	4
3	7	4	5	6	2	8	9	1
5	9	8	7	1	3	4	2	6
2	6	1	4	8	9	3	7	5
6	1	5	9	2	8	7	4	3
9	8	7	1	3	4	5	6	2
4	3	2	6	7	5	9	1	8

To contact the newsletter team :-

**Telephone** - 01354 638048

**Email** - Advertisements : [adverts@theheron.info](mailto:adverts@theheron.info) / for the editorial team : [editor@theheron.info](mailto:editor@theheron.info)

**Post / by appointment :**

The Heron, The Hollies, March Road, Tipps End, Wisbech, Cambs. PE14 9SH

The information in this newsletter is intended to be useful and informative for readers, opinions expressed in news articles or third party comments do not express the opinions of the publishing team, who strive to maintain impartiality on behalf of The Heron at all times.



## DIRECTORY

Age UK Cambridgeshire	0300 6669860
Alzheimer's Society(Fenland)	01945 580480
Cambs Fire & Rescue	01480 444500
Care Network <a href="http://www.care-network.org.uk">www.care-network.org.uk</a>	01954 211919
Churchwarden - Mrs. D. Symons	01354 638352
Citizens' Advice Bureau , Wisbech	01945 464367
Community Car Scheme (to book a journey)	07902 316360
County Councillor – Fred Yeulett	01354 653763
District Councillor – Mac Cotterell	01945 583744
District Councillor – Will Sutton	01354 638025
Eastern Electricity	0800 783 8838
FACT (Fenland Association of Community Transport)	01354 661234
Fenland District Council	01354 654321
Library – March	0354 0455225
Memorial Hall Caretakers – Mr. & Mrs. A. Murray	01354 638272
Parish Clerk – Mr. Stephen Cowell	01354 661374
Rector - Rev'd Kevin Fitzgibbon	01354 680969
Stagecoach - Peterborough	01733 554571
Stagecoach - Cambridge	01223 423 578
Telephone Complaints	0345 145000
Townley School	01354 638229
Trading Standards	0845 04 05 06
Train Information	08457 484950
Upwell Health Centre	01945 773671
For S Doc (out of hours surgery please ring this Number and you will be through to those on duty)	01945 773671
Water Emergencies	08457 145145
Welle Pharmacy, Upwell Health Centre	01945 774081
Wisbech Fire Station	01945 428600

**\* New non-emergency Police phone number - 101\***