



The Heron

Community Magazine

April 2018

Delivered to homes in Christchurch, Euximoor and Tipps End - £1 where sold

SPECIAL EDITION!

In this issue!

Neighbourhood Watch	2
Community Info	3
Editorial	3
Diary Dates	4
Church Services	4
Letters to the Editor	5
"Food Fayre"	5
Arts - Welle Cinema	6
Arts - Jazz Club	6 & 7
Cambs Fire & Rescue	8
Clubs Pages	10 & 11
Youth Page	12
Neighbourhood Alerts	13
FREE Sailing	15
Joan Smith Column	16
Easter Quiz	16
Pop-Up Coffee Shop	16
Glimpses of Childhood	17
Syringa Family History	20
Townley Page	21
An Easter Message	24
Parish Lunch	25
Useful Numbers	26
And Finally	26
Burglaries Update	27
Heron Sport	28
Syringa Family Photo	28



With the recent spate of burglaries & thefts from vehicles, as well as numerous other nefarious activities, the Heron Team thought that this month it would be appropriate to update all our readers on various local incidents and suggestions for being more secure in both your homes and local communities. We publish inside updates via Neighbourhood Watch emails and from the Police & Crime Commissioner's bulletin newsletters. Please also take note of your own Neighbourhood Watch Co-ordinators contact details in our Useful Numbers on p. 26

Editorial Team:

Richard Guilford – Editor

Linda Webster – Treasurer & Ad. Manager

Support - Derek Randall-Hall, Elaine Reed-Hughes, Lewis Bennett, Hazel Crawford, Sandra Kay & Team

Website:

www.theheron.info

Enquiries:

editor@theheron.info / 01354 638990

adverts@theheron.info / 01354 638124



You will find extracts and updates from various Neighbourhood Watch mailings on this page and on pages 13, 18 & 27 for your interest.



OUR NEWS

the e-newsletter for Neighbourhood Watch supporters

FEBRUARY / MARCH 2018 EDITION

Working together to prevent dog theft

For many of us our pet dogs are another member of the family and if they're stolen the impact can be devastating.

We've teamed up with the national charity Dogs Trust in their new campaign to help prevent beloved pets being stolen.

With a staggering 1,800 dogs reported stolen in 2016 Dogs Trust is urging owners to be vigilant through the launch of their new campaign *Family Pawtraits*.

Lee Paris, campaigns officer at Dogs Trust, told *Our News*: "With dogs playing such a huge part in our lives, it is important for us to offer them the same care and protection given to all family members. "Whether two legs or four, we all want to be kept safe. By following our three simple steps, you can reduce the risk of theft and offer the best possible chance of being reunited with your dog should they go missing."

Keep your dog;

- **Safe:** secure your property and garden.
- **Spottable:** keep them in sight and trained to return.
- **Searchable:** know what steps to take should they go missing.



To watch the video and download the Safe, Spottable and Searchable factsheet that you can share with friends and family visit www.dogstrust.org.uk/dogtheft

"We know our members are concerned about the rise of dog theft and that's why we wanted to do our bit to help promote the best advice on keeping them safe," said Jayne Pascoe, Strategic Partnerships Director at Neighbourhood Watch.

Thanks Take Five!



Neighbourhood Watch was delighted to support the recent Take Five to Stop Fraud Week.

The week of action was part of the national campaign from Financial Fraud Action UK and the Government, backed by the banking industry coming together to tackle fraud. For more information see page 2.

Take Five has kindly supplied us with lots of fantastic window stickers for our members and they'll be distributed later in March.

Thanks Take Five!

Community Information

Mobile Library: First Tuesday each month - In the Lay-by Upwell Road - 12:15 to 12:45pm

Mobile Post Office:

Visits Mon to Thu in the Lay-by Upwell Road.
Monday and Thursday - 16:30 to 17:00pm
Tuesday and Wednesday - 6:10 to 17:00pm
Fridays - no service

Dun Cow Meal Deal on alternate
Wednesday lunchtimes - 2 courses for £5.50 -
Pre-booked places ONLY.
This month's dates are 11th Apr, 25th Apr, and 9th May

Village Litter Pick This has had to be rescheduled due to the recent snowy weather and will now take place on **Saturday 14th April 10.00am**. Please meet in the Community Centre car park. Please see news@KeepBritainTidy.org

NB - Advanced Notice

There are to be road works in Christchurch, Manea, and Wimblington areas. Each will require road closures for various lengths of time. (TBC)

Junction of A141 and B1093 - Installation of traffic signals - 5/3/18 to 13/4/18 - Night closures and local traffic management

Boots Bridge - Manea Road replacement of bridge deck and parapet - 24/7 closures 16/4/18 to 22/6/18

Manea Road B1093 - Carriage maintenance 25/6/18 to 6/7/18 - closure times TBC

Isle of Ely Way A141 - Carriageway Maintenance - 26/6/18 to 6/7/18 - Night closures

Cotton's Corner Bridge - Road closed from 22/01/18 for 14 weeks for bridge reinforcements
Tel: 03450455212

School Defibrillator - location is on the wall of the dining hall in Townley School grounds.
Access via the car park in Greenways off Crown Rd.

Delicious Fish and Chips are available outside the Dun Cow from Michael and Michelle's van on Fridays 5.00pm to 8.00pm

Contact the Parish Council?

phone numbers: in Useful Numbers page 26,
email: christchurchcambspc@gmail.com
website: christchurchpc.btck.co.uk

Christchurch Community Centre

The Community Centre will be holding its **AGM** on **Wednesday 18th April 2018 at 7.30pm**. If you are part of a group that uses the building and you want to give feedback, or if you have ideas for starting a new village group, or would like to organise a community event, PLEASE COME ALONG! We are a voluntary committee and would welcome anyone who would like to get involved. Free tea/coffee & chocolate cake!

EDITORIAL

Well who'd believe it! A railway line to run along the Sixteen Foot Bank??? So that's the real reason for all the bridge works, and installation of traffic lights etc. Sources in the Rail Planning Office told The Heron that there were also plans to create a 200 hectare freight siding to the north of the new line bordering Christchurch Farm and alongside Euximoor Drove to be known as Russell Halt!

Steve Barclay MP is a great supporter of the new scheme to be called "The Strawberry Line" and linking up with the soon to be reinstated "Bramley Line", as featured in last months Heron. A major part of the funding is to be provided by Mayor Palmer of Soham.

I neglected last month to welcome Hazel Crawford, of Syringa House, to The Heron Team as our new proof reader. Welcome Hazel and we are very thankful that you took on this onerous task from Viv Haresnape who hopes to be moving soon. Thanks also for the articles on your Syringa House discoveries.

Come on all you over 65's! There IS such a thing as a 'free lunch'. Check out page 25 and get yourselves signed up. The entertainment is always fantastic, and after all, what have you got to lose?

Calling all you budding writers! There is a new Creative Writing Workshop starting up! All ages are welcome and individual needs will be catered for as well as the opportunity to learn new skills. Why not come along and see what's on offer? See page 5.

Of course this month sees our Neighbourhood Watch Special with lots of hints, updates, and advice regarding what nefarious activities have been going on around and about locally. Plus all the usual features and a few bits more!

Enjoy! 'Till next time!



DIARY DATES

Abbreviations for commonly used venues:

TS = Townley School, CCC = Christchurch Community Centre, (new Hall)

TH = Three Holes Village Hall, UH = Upwell Village Hall, WH = Welney Village Hall

Weekly events

Mondays Pop-Up Coffee Shop - 9.00 -11.30am - CCC

Pilates - each Monday - 6.30-7.30pm - CCC

Fridays "Cake, Coffee and Chat" - 2.00 - 3.00pm - Parish Church - ALL WELCOME

Fish and Chip Van visits - outside Dun Cow - 5.00pm to 8.00pm

General events

Apr 1st Jazz Club—'Strictly Jazz' - £6.50 entry - Bar and snacks - CCC

Apr 3rd Art Club -1.30 - 3.30pm CCC

Apr 4th Christchurch Book Club - 7:30pm - venue TBA - info 07946 635908

Apr 6th Easter Family Bingo - Bar - Raffle - Cash Prizes - ALL WELCOME! 7.00pm CCC

April 8th Welle Cinema - Murder on the Orient Express - 2.00pm - £3.00 entry - TH

Apr 10th WI - WI's 90th Birthday Party Celebrations - 7.00pm - CCC

Apr 15th Over 65's Parish Lunch - 12.30 for 1.00pm - Reply by Apr 1st(See page 25)- CCC

Apr 18th Gardening Club - Helen Ackroyd - Anglesey Abbey - 7.00pm CCC

Apr 19th Parish Council Meeting - ALL WELCOME - 7.30pm - CCC

Apr 20th Craft Club - Easter Crafts - 7.00pm - CCC

Apr 24th Art Club - 1.30 - 3.30pm - CCC

Apr 22nd Christchurch Food Fayre - 10.00am to 4.00pm - £2 entry - Raffle - Bar - CCC

Apr 25th "NEW" Creative Writing Workshop - 7.00pm to 9.00pm - All ages welcome CCC

May 12th The Heron presents its first **PLANT SALE** - Venue TBA - 10.00am - 4.00pm

Parish Church Services

Mar 30 th	2.00pm	* St. Peter's Wimblington	Good Friday Service
Apr 1 st	11.00am	Revd S Tooke & SE Tooke	Easter Day Communion
Apr 8 th	9.30am	D Symons & A Day	Morning Prayer
Apr 15 th	3.30pm	Rev I & A Day	Evening Prayer
Apr 22 nd	11.00am	SE Tooke	Morning Prayer
April 29 th	10.00am	Revd I Brady & SE Tooke	Communion Service at WELNEY
Every Friday 2-3pm Coffee, Cake and Chat in the Church building			Daphne and Andrew.

PLEASE NOTE — The Heron Deadline

The deadline for all **copy** for May's edition of The Heron is **25th April** However, due to the amount of copy we are getting, leave it till then we may not have space. So -

AS EARLY AS YOU CAN PLEASE !

Advertisers - all our advert rates and conditions can be found on our website www.theheron.info
Business advertisers can book series of 6 or 12 adverts, paid in advance. Adverts for village fundraising events, personal announcements, or small private ads are usually free.

At the time of going to press, all information is as accurate and up to date as we can make it. Changes and updates may be published subsequently. All information contributed by outside agencies, including dates etc., will be assumed to be correct.

NB as a matter of courtesy no content from the Heron should be used without prior permission

Letters to the Editor



Hello Richard!

I am Annie Nason. I met you at the Breakfast Club a few weeks back. I am new to Christchurch... moved in November 2017. I am an aspiring writer and am embarking on writing the life story of my parents who were C of E missionaries in the Far East for over 30 years. I wonder if you would put the following note in the next edition of The Heron. I am very impressed with the magazine - Well Done!

Many thanks

Annie Nason (Ms)

**CALLING ANY WRITERS OUT THERE!
I AM EMBARKING ON A WRITING PROJECT AND
WOULD LOVE TO MEET YOU AND GAIN SOME EN-
COURAGEMENT AND ADVICE.
I LIVE IN CHRISTCHURCH.
PLEASE DO GET IN TOUCH!
LOOKING FORWARD TO A CHAT!
ANNIE**

Great to hear from you Annie! Perfect timing! May I refer you, and any other interested parties, to the advert in the bottom right hand corner of this page concerning our new Creative Writing Workshop - Ed'.

**Come and Play
Easter Family Bingo
7.00pm on Friday 6th April 2018**

**Christchurch
Community Centre
Bar - Raffle - Cash Prizes
Refreshments
FREE ENTRY
Everybody Welcome!
All proceeds to
The Community Centre**

Sandra & Brian Kay

would like to thank all their friends & neighbours,
especially William & Margaret Beswick
for all their help and kindness during
Brian's recent accident.
Thank you all so much!

CHRISTCHURCH FOOD FAYRE

Sunday April 22nd

10.00am till 4.00pm

Back by popular demand
following a successful day in December 2017

Stalls will include:

**Smith's of Wisbech - Fruit and veg
Churchill's Ciders, Katie's Cakes,
Bramblebee Farm - meats,
Pat's Preserves and Pickles,
Shakes - ice-creams and Confectionary
Knights of Downham - Bakery
Cheeses, and more
MCK Bedding Plants,**

BBQ & HOGROAST Raffle

**Entry £2 under 16's FREE!
Including LUCKY TICKET**

ALL PROCEEDS TOWARDS HERON FUNDS
PLEASE COME AND SUPPORT US!

Creative Writing Workshop

Inaugural meeting

**Wednesday 25th April
7.00pm to 9.00pm
Christchurch**

Community Centre

Introduction - and discussion regarding individual
needs, and future time, date, and place, of meetings
to suit those attending.

Hone your skills - Develop new ones!

THE BIRTH OF THE BLUES

(Part Two)

by
Steve Wayne

As a Musician I have always had an affinity with the blues, and thought I knew most of what was necessary.

However, as I began researching these articles, I realised I would need the whole of the Heron to really cover every aspect of this music. Not really an option. So, instead I will try to give a taster to those of you who are maybe less familiar with this artform, and maybe pique the interest of those more in tune with these artists. Having played with some black blues artist, I was aware of the racism from both sides, that inhabit the genre "The White Man Can't Play the Blues" has often been quoted. This however was put into context by the legendary blues singer Howling' Wolf. Who when performing in the UK in the sixties was quoted as saying "When you can't pay your rent, and your cars broke' down, your woman's up and gone. Damn sure you got the blues!" Amen brother!

In the previous article we left the blues at the start of the 1930's. During that decade change was happening fast. For one thing the electric guitar was invented, and the first recorded electric guitar solo was released, by of all people, clarinettist Benny Goodman. On this he featured his guitarist on a side called "Solo Flight" in 1936. The musician in question was Charlie Christian, and that really was a turning point. It didn't take long for guitarist, who



for so long had been struggling to be heard, in amongst those noisy horn players, to move to electricity and turn it up!

The 1930's also began to see the migration from country to city of many rural workers, attracted by relatively well paid jobs and better living conditions, in part due to the two world wars. They brought with them their best friend, the blues. The move to the city led to offshoots of the rural blues such as Memphis Blues, Delta Blues, West Coast and Texas Blues and of course, Chicago Blues. All were different in their own way and quickly electric blues came to dominate, as rural blues faded into the background.

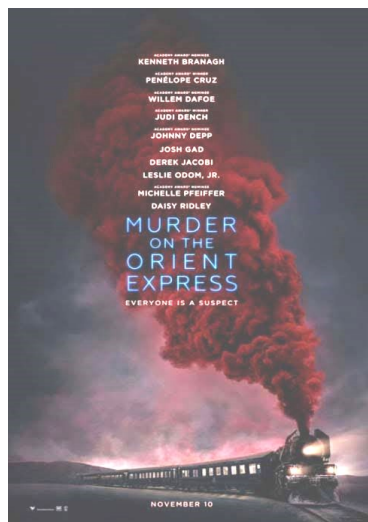
Waiting in the wings during the late 40's however, were two protagonists in the form of John Lee Hooker and Muddy Waters, who were the first to form electric bands, adding piano, bass and drums. In the process creating what we now think of, as the standard line up for a blues band. While in Memphis a young BB King had his first hit with "Three O'clock Blues" in 1949 and proceeded to add horns to his backing band. He also took his first steps to begin his relentless touring schedule, which continued until months before he died, on May 14th 2015 in Las Vegas.

T. Bone Walker was another of the early electric stars and scored a huge hit with "Stormy Monday". The electric blues had arrived and was about to give birth to two siblings. "Rock and Roll" and "Rhythm and Blues."

The 1950's awaits.



THREE HOLES VILLAGE HALL *Charity No. 304483*
Junction of Main Road & Squires Drove, Three Holes, PE14 9JY



MURDER on the ORIENT EXPRESS

(12a) 114 mins, Sunday 8th APRIL, 2.00pm:

Everyone's favourite mustachioed detective, Hercule Poirot (**Kenneth Branagh**), has decided to take a holiday to read Charles Dickens and enjoy three days on the ***Orient Express*** "without care, concern or crime". But, as we know, no good deed goes unpunished, and a *murder* inevitably occurs on board. A lavish trip through Europe quickly unfolds into a race against time to solve a murder aboard a train. When an avalanche stops the Orient Express dead in its tracks, Hercule arrives to interrogate all passengers and search for clues before the killer can strike again.

NO NEED TO BOOK - Admission is £3 per person. Doors open 30 minutes before screening commences. Refreshments and licensed bar available. Tel. 01945 773710 or 772824

Jazz Club Review

“Liquorice Stick anyone?”

Sunday 25th March saw the Jazz Club return to the community centre for its regular monthly session. This month featured the welcome return of Pete Neighbour and his Clarinet (‘liquorice stick’, in case you were wondering) ably supported by Len Skeat and his band of top flight internationally renowned musicians, only this time with the addition of guitarist Dominic Ashworth. Pete led the band through a selection of tried and trusted standards, sometimes the choice of material was a little “trad” for my tastes. Sweet Georgia Brown being one example, however the audience lapped it up as well they should, as the musicianship was of the highest calibre throughout. Worthy of special mention was drummer Neil Bullock who literally rocked the crowds socks off. Whatever the current trends in music there should always be room for this level of artistry. More Please!

Steve Wayne



Upwell Jazz Club 2018

Christchurch Community Centre (Sat Nav PE14 9LL)

The UK's first
Guaranteed
Banjo - free
Jazz Club

Sunday 29th April

Guests: Myke Clifford – saxophone/flute/vocals
Heinz Hunt – saxophone/flute/dancing
Nigel Portass – keyboards
Will Sivier – drums

This session sees the saxophones and flutes of Myke and Heinz doing battle once again, with the added attraction of Heinz doing his ‘Strictly’ impressions.

Also back by popular demand is Will Sivier on drums.

Time: 12.30pm - 2.45pm Admission: £6.50 Accompanied under-16s FREE!

Bar, fresh rolls, crisps and savouries available

More information from Nigel Smith on 01945 773121

CAMBRIDGESHIRE FIRE AND RESCUE SERVICE

Do you own or run a business locally?

Why not attend one of Cambridgeshire Fire and rescue Service's FREE business seminars and let us help you to 'keep your business in business'.

On average there are 165 fires in business premises each year,
and many of those businesses don't go on to trade again!

Attend a FREE Business Seminar with Cambridgeshire Fire and Rescue Service
and get all the support you need to keep your business safe from fire.

We are determined to support and inform business owners across Cambridgeshire and
Peterborough on fire safety legislation, and to help you put together
a FREE Fire Risk Assessment to protect your business.

Whether your business runs out of a small industrial unit, is a sidestreet coffee shop,
or a licensed premises, our FREE workshops will help you to understand important legislation,
and build a comprehensive risk assessment to protect you and your business.

Seminars run across the country in various locations,
and can additionally be arranged, ad-hoc, to your requirements whenever possible.

Contact us today for more information on up and coming seminars,
or to book a place, or to book your own seminar.

Contact us on: 01480 444 500 or book online at www.cambsfire.gov.uk under Business Fire Safety.

Please email pressoffice@cambsfire.gov.uk

HOUSE CLEARANCE

Christchurch
& surrounding areas

Removals & House Clearance
Garages, Sheds & Attics Emptied
Single Items to Full House
Antiques & Modern Taken
Light Removals
Valuations Given
Best Cash Prices Paid

Call for no obligation quote

01354 638178

THE GRANARY STUDIO
Christchurch

Contemporary pictures
and bespoke framing

01354 638614
tgs@granarystudio.uk
www.granarystudio.uk

Maximise the enjoyment of
your home
with the professional help of

Brimstone

Garden Design Services

in association with

SFC Services

Design Development Maintenance
Hard and Soft Landscaping
Household Repairs and Building Maintenance

for free estimates, contact either

Cliff 01354 638217 or 078 080 78518
cliff@brimstonegardendesign.com

or

Steve 01354 638964 or 07725 866445
sfclifford67@gmail.com

Creative Cakes *by Karen*

Locally made

Bespoke cakes & cupcakes for
all occasions - made to order
Including gluten free and
lactose free
Delivered locally

contact for designs & prices

01354 638763 - 07939470027



creative cakes by Karen



Paul Braybrooke

Oil Fired Boiler Engineer

Boiler Servicing & Breakdown Service

Commissions
Tank Replacements

Phone 01353 777788
07946 735691

All members were welcomed also Margaret Beswick and Joan Fear who came along as visitors.

Apologies were received from Michele Nardecchia, Wendy Yates, Sylvia McClean, Sylvia Wilcox, Belinda Gladwin, Doris (Ted) Rolfe and Doris (Wolsey) Rolfe.

theWI
INSPIRING WOMEN



**THE DONKEY
SANCTUARY**

Our speaker for the evening was Liz Wright from The Donkey Sanctuary who spoke on Donkey Welfare and her own experiences at home and abroad. She was thanked by Peggy Warby and given a donation from the WI.



Competition – Memorabilia or Photo of Donkeys

5pts - Annie Nason, Margaret Hayes

4pts - Elaine Reed-Hughes

3pts - Sandra Lloyd, Viv Haresnape, Tracy Day, Margaret Sparrow

2pts - Val Parker

Raffle prizes were won by Tracy Day, Margaret Hayes and Sandra Kay.

APRIL MEETING

WI's 90th Birthday Party April 10th at 7.00pm

Entertainment provided by Lincoln Noel.

This session we decided to either make something for Easter or carry on with our own projects. A few of the children decorated some eggs and made some super Easter novelties.



Next month will be 'bring and make' so bring a project you've already got from home or feel free to use anything we have in the craft cupboard. We meet on the first Tuesday of the month, at Christchurch Community Centre, and new members are always welcome.

Contact Wendy on 01354 638448.



Christchurch Book Club

Book club met on 28th March. We had been reading "The Invention of Wings" by Sue Monk Kidd.

This was based on the true story of Sarah Grimke, who was born in Charleston, South Carolina, during the slavery era, but who became a fervent abolitionist, member of The Quakers and a renowned public speaker on the evils of slavery and in support of equality for women.

All members thoroughly enjoyed the book

Our next meeting will be on Wednesday 25th April, 7.30pm at Sandra's - 29 Fen View. We shall be discussing "The Boy With the Topknot" by Maggie O'Farrel.

New members are always welcome. For more information contact Sheila Day on 079466359078

Christchurch Gardening Club

"Told you So!"

A few weeks back while discussing forthcoming trips for the club, someone on the committee brought up the idea of going to Triplow to see the Daffodils and walk around the tented village.

This event is on annually and this year was their fiftieth anniversary. However, when the idea was put to the members at the AGM it was generally unanimous that it would be too cold and too early in the year. So, four of us decided that instead of a club trip we would book ourselves on to the excursion offered by Harrods Coaches, so we did. Well on the morning of Sunday 18th of March I looked out of the window, to be greeted by pristine white snow. A quick call to the coach company confirmed the trip was still on, so later that morning myself, Marion, Tracy and Sandra boarded a nice warm coach, and off we went. That was pretty much the last time we were warm that day, with the wind whipping through the village, we trudged around, looking for flowers all of whom, had better sense than we four and had laid their heads down. There were folk musicians trying to keep warm as they stuck doggedly to the job in hand, while in another part of the village the jingle jangle of the Morris Dancers rang out, as they did their best to behead each other with their ash sticks. Luckily there was plenty of hot food and shopping to tempt us and we all survived to tell the tale. In better weather I would recommend a visit.



The following Tuesday the 20th March we found ourselves in the warmer environs of the Community Centre, for the monthly meeting of the club. We had a very good turn out to hear our speaker Paul Canham, give a talk about hanging baskets. This is a subject that throws up lots of differing opinions on the right way to go about planting and looking after the baskets. Paul gave good insight on the subject and answered questions for a full 90 minutes, aided and abetted by our own Tracy Day who Paul helped to plant up a basket. Paul's day job is running Aspal Nurseries near Mildenhall and he brought a huge amount of plants along, which the members couldn't wait to purchase. Paul's plants are of the highest quality and he welcomes visitors so if plants are required may I suggest a visit. Paul's address is Aspal Lane Nursery, Aspal Lane, Beck Row, Near Mildenhall IP28 8BH. Telephone 07836 246508. Next Month Tuesday April 18th our speaker will be Helen Ackroyd who will be giving us the lowdown on Anglesey Abbey, I for one can't wait. Our meetings are open to non-members or if you would like to join call 01354 638 230

Steve

Christchurch Art Group Update



Our early March Art session was all about animals. Jan had brought along toy animals and photographs to inspire us. Between us we had a go at sketching or painting hedgehogs, dogs, sheep, donkeys, giraffes, horses and ducks. We all tried various ways to shade and colour our animals to 'bring them to life'.

It was good to welcome three visitors who came to see what we get up to. I think they all enjoyed their afternoon with us.

Our group is friendly and relaxed. We are all enjoying the sessions and would love to welcome some more members. We have a tutor to lead us but we all can learn as much from each other and gain in confidence. All artists have their own special style and approach so we have a lot of variety and some very good art.

We like to try various techniques and subjects.

*Do contact Sandra (638478) or Jan (638217) for more information or pop along during the session at the Community Centre to see what we are up to. We normally meet on the **second** and **fourth** Tuesday of the month at 1.30 till 3.30 (term time).*

This year The Heron will be running a
"Village Plant Sale"
Saturday 12th May
10.00am till 4.00pm
 including
Raffle & Cream Teas
All proceeds to go towards supporting The Heron
 Anyone who is willing to donate plants for this event would be most graciously received.
 Initially please bring any plants to
The Old School, 17, Church Road

What's local?

Each month we will try and find exciting and interesting ideas for all the family – check out what we have in-store below for this month.



ATTRACTIONS

- Scarecrow Smash
- Children's Entertainment – daily show at 3pm
- Lamb Feeding (please arrive early to avoid disappointment)
- Daily Easter Egg Hunt
- Giant Games
- Happy Hands Trail
- Mega Slide
- Giant Sand Pit With Mini Diggers
- Bouncing Pillow
- Farmyard Animals
- Obstacle Course
- Go-Karts
- Zooming Zip-Wire
- Pesky Pigeon Tractor Ride
- Trotter Trophy Pig Racing

THE EASTER FUNYARD IS BACK FOR 2018!

Everyday 10am – 4pm,
30th March to 15th April.

If you haven't already spent an Easter here in our Funyard you're missing out. Watch the children bounce around our open space Funyard like bunny's themselves, enjoying all our fantastic included activities.

This year we have brand new daily shows from top children's entertainers Big Kids!

Build-A-Bunny so you can take home your own fluffy bunny to cuddle (extra charges apply).

WonderPhil and Just Josh will be setting the children off in fits of giggles with their high energy, exciting magic show everyday at 3pm in our warm all weatherproof marquee.

We also have NEW rabbit petting. Make friends with our soft and cute bunny rabbits, right here in the Funyard.



WHO WANTS A FREE NEST BOX TICKET FOR THIS HALF TERM?



This Saturday we will be hiding painted rocks around Ely and Chatteris town! Any lucky person to find a golden rock will be treated to a free ticket to our exciting Half term event!

#Skylark #SkylarkRocks
#ElyRocks #ChatterisRocks



Priority: 5 4 3 2 1



RESIDENTIAL CRIME

Priority: 5 4 3 2 1



CRIME PREVENTION

On the night of 12th February there were 9 reported incidents of theft or interference with commercial vehicles. A number of the vehicles were broken in to and tools stolen. It would appear that commercial vehicles were targeted. These offences occurred in Leverington, Elm and *Christchurch*. Owners of commercial vehicles are advised to remove valuable tools overnight where possible.

On the night of 13th February there were 11 reported incidents of interference and theft from vehicles. A number were broken in to and various items stolen. Some of the vehicles had been left unlocked and were actually parked outside the owners homes. The offences occurred in Leverington, Elm and *Christchurch*. Vehicle owners are advised to remove valuables overnight where possible.

seek to settle debts or outstanding fees in England and Wales. These differences range from the type of debt they will enforce to the legal powers they possess. To learn more, please take a look at some of the helpful information and links on the Step Change Debt Charity website; www.stepchange.org/debt-info/debt-collection/bailiffs-and-debt-collectors-differences.aspx

Protect Yourself

1. Make vigorous checks if you ever get a cold call. Bailiffs for example, should always be able to provide you with a case number and warrant number, along with their name and the court they are calling from; make a note of all details provided to you.
2. If you receive a visit from a bailiff, they must always identify themselves as a Court Bailiff at the earliest possible opportunity. Ask to see their identity card which they must carry to prove who they are, this card shows their photograph and identity number. They will also carry the physical warrant showing the debt and endorsed with a court seal.
3. Exercise caution! Don't believe something is genuine because you've found it on the internet; fraudsters could easily create fake online profiles to make you believe them.
4. Double check with the court, company or public body they claim to work for to confirm whether the call is legitimate; if you use a landline make sure you hear the dialling tone prior to dialling as the caller could still be on the line and you could potentially speak to the fraudster(s) to confirm the non-existent debt. Also be sure to independently search for a telephone number to call; never use a number provided by the caller without carrying out your own research.
5. Do not feel rushed or intimidated to make a decision based on a phone call. Take five and listen to your instincts.
6. If you know you have a debt, keep in regular contact with your creditor and be sure to establish the debt type at the earliest opportunity if you are not aware. This will help you to understand who might be in contact with you regarding any repayments or arrears.

You can report suspicious calls like these to Action Fraud
- visit www.actionfraud.police.uk or call 0300 123 2040.

Phantom Debt Fraud Action Fraud has recently experienced an increase in the number of calls to members of the public by fraudsters requesting payments for a "phantom" debt. The fraud involves being cold-called by someone purporting to be a debt collector, bailiff or other type of enforcement agent. The fraudster may claim to be working under instruction of a court, business or other body and suggest they are recovering funds for a non-existent debt. The fraudsters are requesting payment, sometimes by bank transfer and if refused, they threaten to visit homes or workplaces in order to recover the supposed debt that is owed. In some cases, the victim is also threatened with arrest. From the reports Action Fraud has received, this type of fraud is presently occurring throughout the UK. It is important to recognise that there are key differences between the various entities who

J. Mallett Carpentry

All types of carpentry work undertaken including doors, laminate flooring, kitchens.

Contact Jonathan Mallett

t. 01354 638656

m. 07581 368725

jmallettcarpentry@hotmail.co.uk

www.facebook.com/jmallettcarpentry

www.tackk.com/jmallettcarpentry

BRIAN TWEED & SON LTD

Family Butcher
Town Street, Upwell.

Tel: 01945 773248

Fresh beef, pork, lamb and poultry.

Our specialities are home made sausages and burgers.

Home cooked ham, roast beef, roast pork and haslets.

SANDRA KAY

SOFT FURNISHINGS & CURTAINS

HAND MADE (your own fabrics)

01354 638478

Upwell Computer Repairs

Virus Removal - Upgrades - System Service -
New Machine setups - Wireless setups -
Printer setups - Call out repairs

Phone - 01945 772717/07849 778525

E-mail - upwellcomputerrepairs@gmail.com

A JONES & SON

TELEVISION SALES/REPAIRS/INSTALLATION

FREE LOCAL DELIVERY

FIRST CLASS AERIAL INSTALLATIONS/ADDITIONAL POINTS

26 March Road, Wimblington, March, Cambs PE15 0RN

Tel: 01354 740320

CLOSED ALL DAY TUESDAYS

Beauty Treatments

By
Jane

N.V.Q. – i.b.d. – Babtac

LCN Microdermabrasion Facials
NEW Oxygen regeneration Facials - less outlay than Botox (a celebrity favourite)
NEW Non-surgical firming lift and tone
St.Tropez Spray tanning
Gel pedicures
Shellac manicures
Week-end & semi permanent eyelashes

Rose Cottage,
Christchurch
Telephone: 01354 638378



FENLAND LEISURE PRODUCTS
PLAY SOLUTIONS
SCHOOLS, PARKS &
LOCAL AUTHORITIES

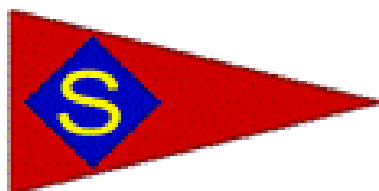
Designing and manufacturing play equipment in the UK for over 21 years specialising in:

- Multiplay Towers
- Net Play
- Aerial Runway
- Outdoor Gyms
- Roundabouts & Seesaws
- Spring Rockers
- Slides
- Trim Trails
- BMX & Mountain Bike Tracks
- Seats & Bins
- Fencing
- Surfacing Solutions
- Bespoke Build Service



www.fenandleisure.co.uk

Tel: 01354 638359 Email: sales@fenandleisure.co.uk



**Snettisham Beach
Sailing Club**

The Clubhouse
Snettisham Beach
King's Lynn
Norfolk
PE31 7RB

PRESS RELEASE

FREE SAILING OPEN DAY: *PUSH THE BOAT OUT!*

All are welcome again as Snettisham Beach Sailing Club throws open its doors for its annual Open Day on Sunday 13th May 2018 from 1.00 pm until 6.00 pm, as part of the Royal Yachting Association national initiative "Push The Boat Out" to promote sailing. Everyone is welcome to come along and try sailing, and – ALL FOR FREE!

There will be free sailing taster sessions on the sea from 4.00 pm and on the lake all afternoon.

Come and enjoy our clubhouse with food from the BBQ and drinks from the bar.

Save 10% off any RYA courses booked on the day, and 10% of club memberships purchased on the day.

There is no need to book in advance just come along on the day!

Just bring footwear you don't mind getting wet, a windproof top, a change of clothes, and a towel.

No experience is necessary and would-be sailors of all ages from 8 years upwards are welcome. Children, you must accompanied by an adult but your adult doesn't have to go sailing. Come and chat with our members and find out how you can get into sailing.

For full details see www.snetbeach.co.uk, and have a look at the video from 2017's Open Day at <http://www.snetbeach.co.uk/pages/videos.php>

For further information, please contact: Mark Foley: publicity@snetbeach.co.uk
0783 3332055 / 01362 688 946

The club is at Snettisham Beach, Norfolk PE31 7RB For more information about Snettisham Beach Sailing Club, visit www.snetbeach.co.uk or find us on facebook.



The Joan Smith Column

On our first night at Elba Valley we spent a very long night wondering what would be happening the next day, our first. The next morning, we had breakfast, and then Susan suggested we go into town to the shops, have a coffee, and lunch somewhere. This is what we did.

We had to get to the bus stop to collect the children where they were dropped off. There was such a lot to see. Our brother was as 'happy as Larry' to be with his grandchildren. David, Susan's husband, came home shortly after we returned home and we all had our evening meal together, which was lovely. Then we started planning the next day.

After the children had gone off to school Susan drove us to Banff. The scenery was wonderful. There were pull-off places where you could stop and take pictures and admire the views. The first things we saw were snow covered mountains all the way there and numerous 'hot springs'. Anyone could try them, but obviously you would need to be prepared.



The shops in Banff were lovely. One place was full of hand-made items. I would have liked one of the totem poles for my garden; beautifully carved and coloured as well. I settle for some leather bookmarks which would take little room in my suitcase. Brenda bought a sort of door stop which looked like part of the root of a tree; polished in an array of colours. It was definitely a 'one-off'.

In the evening we all went and had a meal out. The place was packed! Seemed like it was the done thing in these parts. We all had so many different meal choices that I can't remember them all now. Then off we went home and that was another day gone by, and so quickly too! A new day tomorrow and we wondered what delights that would bring!?

Joan

EASTER QUIZ

1. Jelly beans are enjoyed in many countries at Easter time, but what is the most popular flavour of jelly beans in the US?
2. Jesus prophesied that Peter would deny him how many times?
3. On the side of which hill was the garden of Gethsemane?
4. Pascua is the name for Easter in what language?
5. Signed Good Friday, 10th April 1998, by what name is the 'Good Friday Agreement' also known.
6. What came first - Jesus' crucifixion, resurrection, or Last Supper?
7. The 'Easter Parade' is an American cultural event consisting of a festive strolling procession on Easter Sunday. People traditionally dress in new and fashionable clothing but what item of clothing do ladies strive to impress others with?
8. What happened to Jesus on Easter Sunday?
9. Which job did Zacchaeus hold in the Bible?





Pop-Up Café & Coffee Shop

Pop along and have breakfast with us!

We are now offering a **Full English Breakfast** - only £4 plus sausage, bacon, and/or egg rolls, using homemade produce, and locally sourced, free range meat and eggs where possible.

CLOSED ON EASTER MONDAY

EVERY MONDAY MORNING
9.00am till 11.30am
Monday 9th April
9.30am till 12.30pm
(with films, tuck shop, and activities for the children)
at
Christchurch Community Centre
Hot Drinks, Biscuits, Cakes, and Cookies

All Welcome!
We look forward to seeing you!

Glimpses of a Childhood Spent in Burma & India

And how long did it take YOU to get to school?

by Annie Nason

It took me a week, more or less, in the 1950s. My parents were Anglican Missionaries in Western Burma (Myanmar) from the 1930s to the 1960s. I attended a Boarding school in Southern India. Google the distance! Our long holidays were from mid-

November to mid-February.

Take a week out of each end, and still there were eight weeks to spend at home.

First, there was the ride in the dug-out canoe for two miles downriver to get the local motor launch to the coast. The launch was a shallow water vessel, but often there was not enough depth for it to go that extra two miles up to Paletwa, our home village. It took two days to reach the coast. Although the 120 mile journey could be done in less time, the launch tied up overnight half way because of the danger of insurgency at night.



There was an aerodrome in the town at the coast, Akyab (Sittwe). After a day or two, we boarded the Dakota for Calcutta, and stayed a night at the Salvation Army Hostel.



Then three steam train journeys in a school group. The first journey travelled south to Madras, with two nights on the train; changed trains in Madras, and then overnight to the foot of the Nilgiri Hills. Then, finally, the highlight of the journey for us children – the six hour

ride on the little steam train which went up into the hills to Ooty.

It was, and still is, a narrow gauge rack and pinion railway. There are four narrow gauge mountain railways in India, and this is one of them. A bus journey of about an hour took us to our final destination, our school boarding house. Our black metal school trunks always made it there with us. It never occurred to us as children that they wouldn't. It must have taken some doing on the part of the parents and teachers who looked after us on the journeys! - Wouldn't you say?





MOBILE CATERING

***Freshly cooked fish & chips,
sausages, chicken and pies.***

**Every Friday at the Dun Cow
from 5.00 'til 8.00 pm.**

Call 07756 170 700

to book us for your
party, function
or fund raiser.



SpeedWatch Update

Across Cambridgeshire there are over 120 speed watch teams made up of local volunteers. The teams are generally supported by Parish and Town councils as part of a traffic management plan.



SPEEDWATCH STATISTICS



**Letters
sent to
motorists
in 2017**



9,550

**THAT'S AN 87% INCREASE
ON 2013, WHEN SPEED-
WATCH WAS LAUNCHED!**

Volunteers are trained to use speed indicator devices which display vehicle speeds. Registered owners of any vehicles seen to be exceeding the speed limit are sent an advisory letter by the Constabulary, explaining that speeding is unacceptable to the local community and asking them to be more considerate.

To set up a scheme or find out if there is one near you, visit: <http://speedwatch.info/>.

MAJESTIC

WINDOWS . DOORS . ROOFING

BI - FOLDS . CARPENTRY

CONSERVATORIES

COMPOSITE DOORS

HOUSE RENOVATIONS

GARAGE CONVERSIONS

FASCIA, SOFFIT, GUTTERS

FREE QUOTATIONS AVAILABLE

MIDDLE-MASS@LIVE.CO.UK

MOBILE : 07875 745125

OFFICE : 01354 461172

MARCH, CAMBS

PADDOCK & FIELD SERVICES

Equestrian and Small Acreage Specialist



Andy Jackson

Orchard Barn
Flint House Rd
Lotts Bridge
PE14 9JN

07801 108 555



andy@paddockandfieldservices.co.uk
paddockandfieldservices.co.uk

**TOPPING, HEDGE & VERGE CUTTING,
HARROWING & ROLLING,
SPRAYING, BALING,
MACHINERY RENOVATION & REPAIRS**

Outwell Timber

For all your Timber and Building Supplies

ISLE ROAD, OUTWELL

PE14 8TD

Tel: 01945 77 21 16

**FENCING, PANELS, TRELLIS
TIMBER, PLYWOOD, DECKING**

SAND, BALLAST, GRAVEL

SCREWS, NAILS, BOLTS

PAINT, SILICONE, HAND TOOLS

**LOCKS, ELECTRICALS, PLUMBING,
GUTTERING**

UNDERGROUND PIPE & FITTINGS

CEMENT, MULTIFINISH, PLASTERBOARD



live happy!
with
Slimming World

**save £5
join now!**

Just £9.95 on week one
then £4.95 each week

DODDINGTON

**MONDAYS 9:30 AM, 11:30 AM,
3:30 PM, 5:30 PM + 7:30 PM**

**DODDINGTON VILLAGE HALL,
BENWICK ROAD**

TEL: DIANE 07707 547604

WWW.SLIMMINGWORLD.CO.UK/

SLIMWITHDYNAMICDI

OPEN BANK HOLIDAY MONDAYS

find this delicious recipe online
f t i slimmingworld.co.uk

**Slimming
WORLD**
touching hearts, changing lives

FOUR SEASONS TREE SERVICES

**Qualified & Professional Tree
and Client Care**

**PRUNING • LOPPING • FELLING
PLANTING • REDUCING & RESHAPING
CROWN RAISING • HEDGE TRIMMING
THINNING • POLLARDING • STUMP REMOVALS
OVERGROWN GARDENS PUT BACK INTO SHAPE
FRUIT TREES TREATED • LOG & WOODCHIP SALES**

FREE ESTIMATES & ADVICE WITH NO OBLIGATION

For quality jobs at a competitive price call:

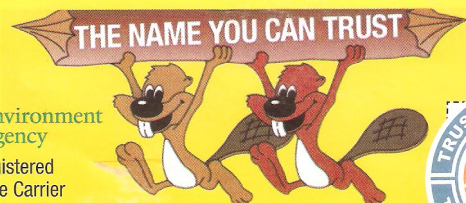
Home: 01353 721665 - Mob: 07771 707921

All work carried out to BS 3998 Standard

A genuine family managed business est. for over 30 years - Fully Insured



**Environment
Agency**
Registered
Waste Carrier



This company offers a 7 day cooling off period

The Family History of Syringa House

While we were restoring the outside of Syringa House, I'd wondered what the 'S' and 'B' stood for on the iron supports that are on the far gable end. I'd found some old documents and photographs in the house and a mention of a 'Samuel Berry' - I then put two and two together and this led me to do some family history investigation. It sounds silly but knowing the history has kind of put me at peace with the house, the families that have lived here and it's friendly piano playing ghost! I have been able to trace the Berry family line back to 1597 and the 'S' and 'B' on the house are for Samuel Berry - a farmer born in Fenstanton in 1760. Syringa House is thought to have been built around 1785, which would have made Samuel 25 years of age, however it may have originally been, as my husband suspects, a barn that was added to and converted over the years as the families grew.



Samuel Berry (1760-1826) was one of three brothers and two sisters, he was from a large family that owned and farmed land in Christchurch and the surrounding villages - possibly owning the land from the house all the way to the river. They may have originally come from Swavesey, are of Huguenot descent and I believe may have been involved in the drainage of the fens (one of the local bridges over the drain is called Berry's Bridge). From my research, the other two houses at the centre of the village (Christchurch Cottage and The Green) may have been built and owned by his brothers William Berry (1752-1795) and John Berry Snr (1756-1819). John Berry Snr was the Publican at the 'Crown Inn' on the 16ft Bank at the top of Crown Drove.

Samuel married Elizabeth Tombleson in October 1785 (tied in nicely with estimated age of house) and lived in Syringa House with their four children; Thomas, Joseph, Samuel and Edith (there was also possibly a first born Samuel). Then when Elizabeth died in 1793, Samuel remarried Lydia Deniston and went on to have a further child, Adah who died as a baby in the same year as her birth.

In 1826 the house then passed to his son Samuel Tombleson Berry Snr (1791-1864) who also married an Elizabeth and had one son Samuel who died at 10 years old. When Elizabeth died, Samuel remarried Sarah Wool and went on to have twelve more children including Samuel Joseph Jnr (1825-1903). The farm was let in September 1859 and the farm live stock and implements were sold off. *I wonder where did Samuel and family go and when did they come back?*

Upwell, Cambridgeshire.
TO BE SOLD BY AUCTION, BY
THOMAS HODSON,
On TUESDAY NEXT, Sept. 27, 1859, on the premises of Mr. Samuel Berry, situate at Brimstone Hill, in the parish aforesaid;
THE following valuable LIVE STOCK and FARMING IMPLEMENTS: including 2 cows, 4 buds, 6 pigs, 2 horses, 6 fillies, 5-horse power thrashing machine, stubble drag (by Culpin), 10-coulter corn drill (by Hornsby), turnip cutter (by Gardiner), corn dressing machine (by Cave), gig, road waggon, 4 carts, ploughs, harrows, and the general contents of a Farm Yard.
Mr. Berry having let his Farm, is the reason of the above Sale; which will commence at two o'clock.

Samuel Joseph Jnr married Mary Ann Holmes in 1854. They emigrating to America in the mid 1850s and had four children there; Samuel Hugh, Alice, Ida and Clara. They returned to England, probably in 1864, the year in which his father died. In the 1871 and 1881 census, Samuel Joseph Jnr is residing in Syringa House with his four children, going on to have three more children here; Ann, Sarah and Florence.

Here is where it gets a little confusing! The photograph, on the back page, shows the wedding party of Clara Berry to John Corke outside the front of Syringa House in 1898. Clara's sister, Florence, had died leaving two sons; Stanley Berry Corke (1896-1963) and John Francis Corke. Florence's widowed husband, Frances Corke remarried and emigrated to America with his new wife, leaving his two infant sons with her sisters, Ida and Clara. Clara (assistant school mistress - at the school here?) then married Frances's father, John Corke, presumably to help in the raising of his abandoned grandchildren!

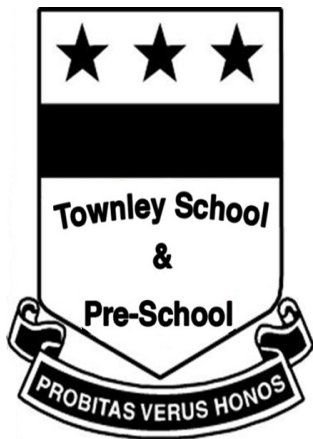
Samuel Joseph Jnr's eldest son Samuel Hugh (1854-1902) married Elizabeth Ann Smith. They didn't have any children and as he died before his father, Syringa House was left to the three remaining daughters: Ida, Clara and Sara when their father died in 1903, (Ann having died at 5 years old and Florence at 27).

Syringa House was put up for sale to divide the assets between the three girls. Ida's husband, Henry Hutchinson bought the house on 15th July 1905 for £430 (we are lucky enough to have the sale particulars framed in the house). On the 1911 census, Ida was the Sub-Postmistress and Henry was a wheelwright and carpenter. Their nephew Stanley Berry Corke is also shown as living here (eldest son of Florence).

Henry had been married before and had had twelve children with his first wife, but none with Ida. They lived in the house with some of Henry's children, the youngest, Herbert, being a telegraph boy and then a postman in 1916. On Ida's death in 1942 the house passed back to her nephew Stanley Berry Corke. Stanley married Elsie May Brooks and had two children; Mary and Irene. Stanley was the Postmaster here, retiring in 1956. His daughter Mary married John Everard Watson and they had a daughter, Rachel, the last of the Berry family line to live in Syringa House.

I haven't spoken to Rachel about her family, so this is only the information I have managed to trace from various family history websites and a bit of 'Googling' - so I apologise if I have made any errors you may know about - but please feel free to correct me!

Hazel



TOWNLEY SCHOOL AND PRE-SCHOOL

Christchurch, Wisbech, Cambs. PE14 9NA

Email: office@townley.cambs.sch.uk

Website: <http://www.townley.cambs.sch.uk>

Tel: 01354 638229

March 2018

Friends of Townley School

Keep the date, the Dog Show will be back this year!

Saturday 9th June

Details to follow soon!

Science Week

Emperor Class took part in a day of Science, organised by the staff at Downham Market Academy. The children had a fantastic day learning about different aspects of science.



Story Café

This month Emperor Class have held their Story Café. Parents and Carers came and took part in Easter craft activities. They made wonderful Easter bunnies!

Church Farm Visit

The Pre School Early Years Foundation Children (Cubtail and Darter) all visited Church Farm at Stow Bardolph, they had a fantastic day.



L.W Vehicle Services
Car & Commercial repairs



Est 2003

- ~ Electrical and Mechanical Diagnostics and Repairs
- ~ MOT Preparation & Testing
- ~ Servicing and Inspections
- ~ On Site Service
- ~ Breakdown / Recovery Service
- ~ Van and Car Sales

Contact Lee on 07717 738796 Or Tel 01354 610172
March Road, Welney



**S & H Painters and
Decorators**

Tel : 01354 638124

Mob: 07905145680

Steven Horne

Christchurch, Cambridgeshire

P R PARKER

Established 1978

General Building and Maintenance

CARPENTRY	REFURBISHMENT	GLAZING
PLUMBING	AND	PAINTING
PLASTERING	RENOVATION	DECORATING
BRICKLAYING		RENDERING
ROOFING	01354 638380	GUTTERING

FREE ESTIMATES

All Types - Houses - Flats - Shops - Offices

A.R. CLINGO

FUNERAL DIRECTOR

**Family Independent
Business**

**Private Chapel of Rest
Personal Attention**

24 Hour Service

Full estimates given at all times

Golden Charter
Funeral Plans



Pinfold House
St. Peter's Road
Upwell, Wisbech
Phone 01945 772502

BUILDING DECONSTRUCTION

Buildings bought and all materials recycled/
upcycled

Pre 1930s preferred
but all buildings considered
from barns to cottages
including site clearance

FREE QUOTATIONS GIVEN

We have a large number of salvaged
ARCHITECTURAL ITEMS FOR SALE

Bricks & other building materials,
roof trusses etc.

Firewood, plants, and hanging baskets

COME IN AND SEE US

AND HAVE A BROWSE!

Call Matt or Sarah Lawrence on
Tel: 01354 638977 or, Mobile: 07856 291787
Toll Farm, Ha-Penny Toll Road,
Three Holes, Norfolk,
PE14 9LJ
Email: buildingdeconstruction@yahoo.com

CHRISTCHURCH ELECTRICAL

Simon Freeland Hill Farm, 3 Church
Road, Christchurch, PE14 9PQ

Tel: 01354 638802 Mobile: 07727 046439



Domestic electrical work undertaken.
No job too small.
Free quotations / estimates.



www.electricalcompetentperson.co.uk

www.electricalsafetyregister.com



March Stationery & Print

**Booklet Printing
Business Cards
Digital Photos
Leaflets
Newsletters
Banners**

01354 656614

sales@marchsp.co.uk

5 Fenland Walk, March, PE15 8TW

An Easter Message: Making it Real!

Being a vicar of some 28 years you'd think Easter would be an easy issue to write up for The Heron, but it is difficult to publicise and illustrate the message of Easter when there are no photographs of any of the events of Holy Week.

The answer is you use artwork, or still pictures of the Passion Plays, but they are a poor substitute for the real thing, lending a sort of pretend air to events as graphic and gritty as anything that can be seen currently on the television news; such as the Syrian conflict, and the fighting taking place in Yemen.

Christ's Crucifixion was REAL! The flogging was REAL! The nails being hammered through Jesus' hands were REAL! The Resurrected Christ was REAL, and IS REAL! But there are no photographs! Not even an artist's impression created at the time. During this time of year we see many images of a man on a cross, but none of them are Jesus because no one knows what He really looked like. Incredibly, the oldest image that exists of Jesus was produced for a church not in Palestine or Rome but for a dining room floor in Dorset around the year 360 AD. It can now be seen in the British Museum.



But why are there no earlier representations of the face of Christ? The Early Christians would not have dreamt of making a likeness of Jesus. To create an image of God was anathema and inconceivable to Jewish culture, and the Jewish culture remained powerful for the first two or three centuries of the early Christian church. By the year 360 AD things had changed in Roman Britain. It was a Golden Age, at

least for the ruling classes, who lived in lavishly decorated villas. It was for such a house, in the village of Hinton St. Mary, that an image of Jesus was created out of coloured stone and pieces of ceramic, to adorn the dining room floor.

But how did the artist know what Jesus looked like? He didn't! So he made him look like a Roman Emperor, robed and authoritative. But we know who he is! Behind his head is the Early Christian monogram of CHOI RH; THE Greek letters that begin Christ's name in that language. Written as though they were 'X' and 'P' in our alphabet. The first created image of Christ, who was 'crucified' by the Romans, shows him as a Roman Emperor. What price reality?

In our virtual reality world of 2018, my prayer would be this Easter "Lord make the Cross real to me!" and I would suggest it as a prayer that has never been more relevant!

Have a great Easter

Ian



Dali's 'Crucifixion', though imagined, is evocative of a modern view of Christ watching over the world - Ed'.



The 2018 Christchurch Parish Lunch

will take place on

Sunday 15th April 2018 12.30 for 13.00

Christchurch Community Centre, Upwell Road, Christchurch, PE14 9LL

*The Parish Lunch is open to everyone that lives in the Parish who is 65 and over
or whose partner is, and it's FREE!*

*If you need help with transport or have any queries,
please contact Ruth Ingram on 01354 638419*



Weather Lore

"I know ladies by the score
Whose hair fortells the storm;
Long before it begins to pour!
Their curls take a drooping form!"

*Human hair, especially blonde hair,
has a tendency to expand in length as
humidity rises. This may cause natu-
rally curly hair to droop. Or it may
cause straight hair to curl-up a little.
The higher the humidity -
The more likely it is to rain!*



QUIZ ANSWERS

1. Cherry
2. Three.
3. The Mount of Olives.
4. Spanish.
5. The Belfast Agreement.
6. The Last Supper.
7. Hats - Easter Bonnets.
8. He rose from the dead - The Resurrection.
9. A Chief Tax Collector.
10. Chocolate eggs!



Advertise in THE HERON

(New rates apply as of 1st April 2018)

FULL PAGE(27.7cm high x 19cm wide)

occasional inclusions by special arrangement

HALF PAGE(13.4cm h x 19cm w)

6 issues £80

12 issues £150

QUARTER PAGE(14cm n x 9.4cm w)

6 issues £45

12 issues £80

BUSINESS CARD(5.8cm h x 9.4cm w)

6 issues £25, 12 issues £40

(You should provide your own artwork, but if
necessary we can do it for you at extra charge.
price on application)

ALL ADS MUST BE RECEIVED AND PAID FOR BY
25TH OF THE MONTH PRECEEDING MONTH OF ISSUE

Block booked ads can be changed, but any required changes
must meet the above copy date.

Village fundraising events, personal announcements,
or small private ads usually free

Tel: 01354 638381

Email adverts@theheron.info

It is the responsibility of advertisers to
ensure their advert complies with
Advertising Standards Authority Codes of Practice.

Useful Telephone Numbers

Age UK Cambridgeshire	0300 6669860
Alzheimer's Society (Fenland)	01945 580480
Anglian Water – Susan Bull	08457 145 145 101
Christchurch Resident's Association	01354 638990
Churchwarden - Mrs. D. Symons	01354 638352
Citizens' Advice Bureau, Wisbech	01945 464367
Community Car Scheme (to book a journey)	07902 316360
Community Centre bookings	01354 638478
Community Fire Safety Officer	07717858166
District Councillor - Will Sutton	01354 638025
District Councillor - Michelle Tanfield	07908 707129
Electricity Faults - UK Power Networks	105
FACT	01354 661234
Fenland District Council	01354 654321
Floodline	0845 988 1188
Library - March	0354 0455225
National Debtline	0808 808 4000
Norfolk Dial-a-Ride	01553 770310
Parish Clerk - David Gibbs	07932 191050
Parish Councillor - Jill Bliss	01354 638343
Parish Councillor - Richard Lloyd	01354 638956
Parish Councillor - Roger Gladwin	01354 638538
Parish Councillor - Geoff Harper	01354 638681
Parish Councillor - James Hughes	01354 638310
Parish Councillor - Peter Owen (Chair)	01354 638847
Parish Councillor - Nigel Russell	01354 638279
Police - PCSO Sue Clarke	07738025220
Police - Emergency	999
Police - Non Emergency	101
Telephone Complaints	0345 145000
Townley School	01354 638229
Trading Standards	845040506
Train Information	08457 484950
Upwell Health Centre (and out of hours)	01945 773671
Upwell Health Centre - Pharmacy	01945 774934
Vicars - Ian & Lynda Brady	01354 740627
Water Emergencies	08457 145145

Club Contacts

Art Club - Jan Clifford	01354 638217
Book Club - Sheila Day	07946 635908
Craft Club - Wendy Yates	01354 638448
Gardening Club - Marion Hawthorne	01354 638230
Short Mat Bowls Club - Wendy Keen	01945 772737
WI - Peggy Warby	01354 638339

Neighbourhood Watch

Colin Steenson - Church Rd (East)	01354 638664
Sandra Kay - Crown Rd	01354 638478
Shirley Knight - Church Rd (West)	01354 638779
David Yates - Church Rd (West)	01354 638448
Julian Swallow - Upwell Rd (North)	01354 638679
Jackie Wood - Upwell Rd (North)	01354 638679
Simon Freeland - Upwell Rd (South)	01354 638802
Richard Guilford - Area Co-ordinator	01354 638990
David Harrowing - District Co-ord.	01945 870963

And Finally!...

Despite being reasonably successful so far in our years as the incumbent custodians of your community newsletter - The Heron - we think? Our financial reserves have dwindled a little and with the possibility of us losing our Parish Council funding next year we felt that it was time for a little fund raising again. Something we have not done for the last couple of years.

Our first fundraiser will be the Christchurch Food Fayre on Sunday the 22nd of April from 10.00am to 4.00pm. See the ad. on page 5 and please come along and support us. Lots of good produce on sale as you may remember from last time. This time with even more stalls!

As we heard that Gardening Club were not going to hold their usual plant sale this year we thought that we would run one of our own with all proceeds going to support The Heron. More on that next month. But please see the ad. on page 11. Saturday 12th May is the date!

Other Heron fundraisers to look-out for this year will be our Summer Hogroast which we'll tell you more about nearer the time. Then later in the year, around September / October we hope to present Heronaid II. With the possibility of a full "Rock Choir" being involved! More details to follow on that too!

Whilst all these events are intended as Heron fundraisers, based on past experience, we are sure that you will find them all entertaining and enjoyable. So please give us all the support you can for some inexpensive days out which, we hope you agree are all for a good cause. Who knows? - perhaps a full colour magazine might be possible with YOUR HELP!

Hope you enjoy this month's?

'Till next time - Ed'.

Web links in the Heron are active when viewed in our online version www.theheron.info

National News

Burglary rates rise again

Domestic burglary has risen by more than 30% according to the latest police recorded figures released by the Office of National Statistics (ONS) in January.

The latest recorded crime figures show there were 261,915 domestic burglaries – where an offender has entered a person's home – in the year to September 2017.

Overall, total recorded crime is up 14% and the figures from 44 Police forces show:

- Robbery up 29%
- Sexual offences up 23%
- Knife Crime up 21%.
- Violent crime up 20%

However it is important to note that these levels are nowhere near the levels seen in the 1990s when crime peaked.

Indeed figures from the separate *Crime Survey of England and Wales (CSEW)* - which are based on people's experiences, suggests crime continues to fall.



This survey, based on interviews with 35,000 households in England and Wales, includes crimes that people do not report to police.

Jayne Pascoe, Strategic Partnerships Director for Neighbourhood Watch, said: "The recorded figures reflect what we've seen here at Neighbourhood Watch with more people contacting us to want to set up a scheme in their area – many as a result of themselves or their neighbours being burgled.

"So now, more than ever, Neighbourhood Watch is an important way people can take an active role in protecting their homes and the things they care about."

Remember: To prevent burglary the most important thing you can do is:

- fit good window and door locks
- and ALWAYS leave a light on when you're out for the evening.

To look at the crime figures [click here](#)



Simple advice to stop fraud from Take Five

To support *Take Five to Stop Fraud Week* we issued a special Neighbourhood Alert to hundreds of thousands of Alert users to share the simple advice on offer. Thanks to everyone who responded to us.

The advice from Take Five is **really simple** but it can stop you becoming a victim of fraud.

1. A genuine bank or organisation will **never** contact you out of the blue to ask for your PIN, full password or to move money to another account. Only give out your personal or financial details to use a service that you have given your consent to, that you trust and that you are expecting to be contacted by.
2. Don't be tricked into giving a fraudster access to your personal or financial details. Never automatically click on a link in an unexpected email or text.
3. Always question uninvited approaches in case it's a scam. Instead, contact the company directly using a known email or phone number.

To read more about Take Five and to access all their useful resources that you can use to spread the message about preventing fraud go to <https://takefive-stopfraud.org.uk/>



AFC CHRISTCHURCH

2017-2018 SEASON



HeronSport

AFC Christchurch The Magpies March Soccer School Academy

Back on form, The Magpies were unlucky to lose 2 - 1 to March Soccer School Academy. They powered over the away team until the 27th minute where March Soccer School Academy were awarded a dubious

1 penalty. During the first half The
2 Magpies failed to take advantage of two fantastically taken free kicks. But in the second half The Magpies displayed some fantastic team skills and eventually equalised with a well taken corner only for March Soccer School Academy in the last fifteen

minutes to score going on to win 2 - 1. The Magpies battled until the end and were unlucky not to score from a corner in final minute.

Other scores:

Coldham United Reserves 1
AFC Christchurch The Magpies 6

Pos		P	W	D	L	GD	Pts
1	March Soccer School Academy	19	12	2	5	38	38
2	St Ives Rangers Reserves	15	12	1	2	60	37
3	AFC Christchurch The Magpies	19	12	0	7	20	36
4	Littleport Town Reserves	18	11	2	5	20	35
5	Fenstanton Reserves	18	11	2	5	17	35
6	Wicken First	20	9	3	8	13	30
7	Little Downham Swifts Reserves	16	13	1	2	43	28
8	Chatteris Town Youth Fen Tigers Reserves	19	8	0	11	-20	24
9	Marchester United First	21	5	5	11	-12	17
10	Cottenham United A Team	18	4	4	10	-30	16
11	Coldham United Res	19	4	2	13	-41	14
12	Benwick Athletic Reserves	22	5	1	16	-59	13
13	Somersham Town A Team	20	3	3	14	-49	12

Manager: Peter Chenery		Correspondent: Yvonne Chenery	
Christchurch Playing Field, Upwell Road, Christchurch, Cambridgeshire PE14 9LL			

RESULTS MARCH				
10/03/18	March Soccer School Academy	1-2 Lost	Home	League
24/03/18	Coldham United Res	1-6 Win	Away	League
FIXTURES MARCH				
31/03/18	Somersham Town A Reserves	15:00	Home	League
FIXTURES APRIL				
07/04/18	Littleport Town Reserves	15:00	Home	League
14/04/18	Cottenham United A Team	15:00	Away	League
21/04/18	March Soccer School Academy	15:00	Away	League
28/04/18	Little Downham Swifts Reserves	15:00	Away	League



(Please see Hazel's article on page 20)
This photo, taken outside Syringa House on 20th December 1898, shows Clara's Wedding Party, with the two motherless baby boys.

*We look forward to future revelations from Syringa House in due course!
Thanks Hazel - Ed'.*

Any views expressed in The Heron do not necessarily reflect the views of The Heron Editorial Team. The team aim to provide a balanced view of village opinions where such views are expressed.