



The Heron

Community Magazine

August 2019

Delivered to homes in Christchurch, Euximoor and Tipps End - £1 where sold

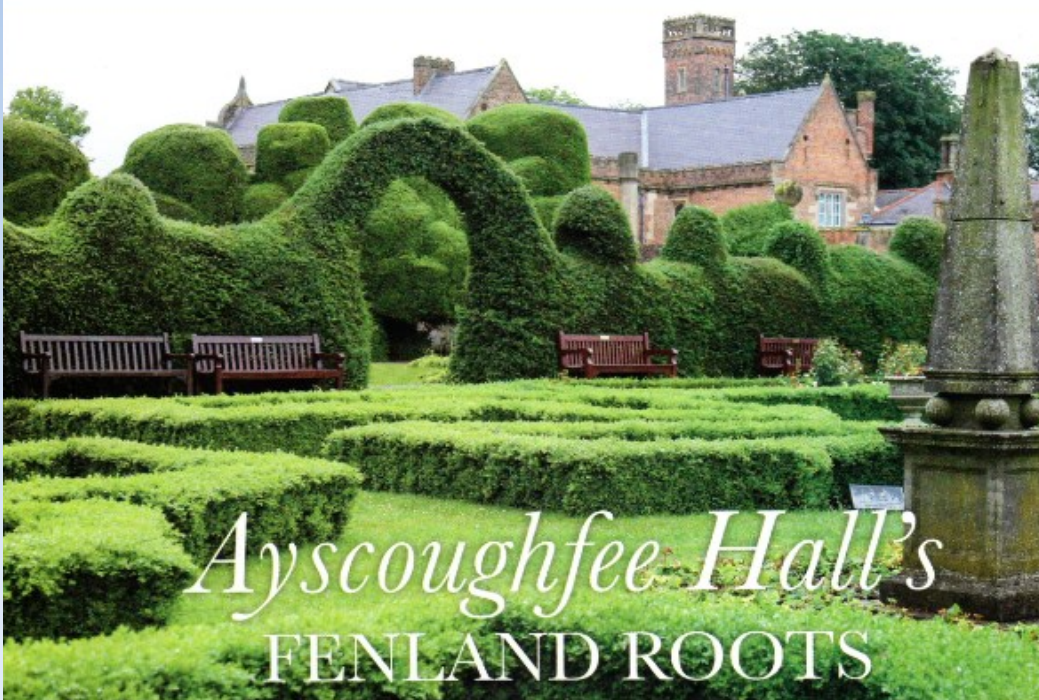
No. 64

**A Great Place to Visit
This Summer!**



In this issue!

Ayscoughfee Hall	2
Community Info	3
Editorial	3
Diary Dates	4
Letters to the Editor	5
WI Fundraiser	5
HeronAid II - "Gambit"	6
Arts - Welle Cinema	7
Arts - Jazz Club	7
What's the BUZZ?	8
IA Moneywise	9
Clubs Pages	12 & 13
I Am a Burglar!	14
PC Snippets	16
Local News	16
Newbie Blog	17
Vet's View	17
Townley School Page	18
Johnsons of Old Hurst	19
Church News	22
"HOGROAST"	23
Forthcoming Events	23
Useful Numbers	26
And Finally	26
Dog Show & Fayre	27
Pop-Up Café Thanks	28
Classic Car Show &	28
Family Fun Day	



Ayscoughfee Hall's
FENLAND ROOTS

Editorial Team:

Richard Guilford – Editor

Linda Webster – Treasurer & Ad. Manager

Support - Hazel Crawford, Lewis Bennett, Annie Nason, Della Curtis, Sandra Kay & Team

Website:

www.theheron.info

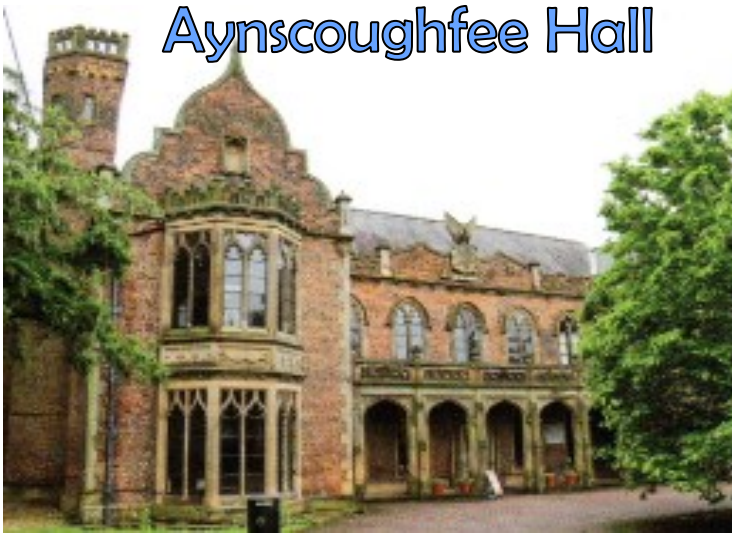
Enquiries:

editor@theheron.info / 01354 638990

adverts@theheron.info / 01354 638124



Aynscoughfee Hall



Set in Spalding, neatly between Peterborough and Wisbech, Aynscoughfee Hall is a most wonderful, if surprising, find. The Hall, really a grand manor house, was built in the 1450's by Sir Richard Aldwyn, a wealthy merchant. It was built in its entirety in one building campaign which, in itself, makes it somewhat unique in Britain. The early house was an 'H' plan with two wings and a central hall which, at the time, would have been the centre of family life.



Aynscoughfee has had many different residents over the years, the most notable of which were the Johnson

family who owned the property for 160 years with six generations of males who were all called 'Maurice'.



Significant changes were made to the house in the 1800's, the most significant of which was the moving of the main door to the centre and adding a porch. The Johnson's ownership of the Hall ended in 1898 when Isabella Johnson sold it to a committee of Spalding citizens for the benefit of the town's inhabitants. In 1902 it was transferred to the Spalding Urban District Council. During WWII the Hall was commandeered by the army to house Belgian refugees. It has also been a private school, before later housing the council offices. In 1974 it was passed on to South Holland Council and renovated for use as a museum which first opened in 1984. In 2004 it was renovated again and the new museum opened two years later detailing the history of Aynscoughfee and Fenland.



Today the Hall is free to visit. Its beautifully landscaped gardens include a formal lake and pavilion, plus many other unexpected features such as the 1925 aviary which houses a collection of cockatiels and canaries. There is also a playpark for the children, & café on site. Displays on Fenland Skating and Fenland local history complete the picture with many interactive displays making it an ideal place to visit with the children in tow.

The museum, gardens, and other attractions are open Wednesday to Sunday (plus Bank Holidays) 10.30am to 4.00pm. To find out more please visit

www.aynscoughfee.org or call 01775 764555.

Aynscoughfee Hall is on Churchgate, Spalding PE11 2RA. **DON'T MISS THE 1940's WEEKEND ON SATURDAY 10th & SUNDAY 11th AUGUST, 10.30am to 4.00pm. *ENTRY IS FREE!***

Community Information

Mobile Library: First Tuesday each month - in the lay-by Upwell Road - 12:15 - 12:45pm. Forthcoming dates are: Aug 6th, Sept 3rd, Oct 1st, and so on.

Mobile Post Office:

Visits Monday to Thursday in the lay-by Upwell Road
Monday and Thursday - 16.30 to 17:00pm
Tuesday and Wednesday - 16.10 to 17:00pm
Fridays - no service

Use it or lose it!

Community Car Scheme:

The Community Car Scheme requires a new voluntary driver. Please contact Jill on 07981 262818. The scheme can be used by anyone who either does not have their own transport or who would like someone to take them for medical appointments, shopping trips, social journeys or visits. Transport is door to door and passengers make a small contribution towards the cost. For more information or to book a journey please contact Jill on 07871 262818.

Defibrillators We are fortunate to have two of these machines in Christchurch. One is located on the side of Townley School Dining Hall, facing the Car Park, in Crown Road; the other is on the front of the Community Centre in Upwell Road.

West Norfolk Transport Project ~ Marshland Dial-A-Bus

Since June 2019 the above service has been operational. It maybe of interest to Christchurch residents and other readers that this service currently runs a weekly service, on a **Wednesday**, to King's Lynn with pick-ups in Upwell, Outwell, Welney, Lakesend, **Tipp's End, Christchurch**, Lotts Bridge and Three Holes. Other services to King's Lynn and Downham Market run on other days of the week but without local pick-ups. Bookings can be made Monday to Friday (except Bank Holidays) from 9.00am to 4.00pm starting on the Monday prior to the week of the journey.

When you book your journey please let them know if you have to travel in a wheelchair, take a trolley, walker, or any other walking aids.

Pick up times will vary depending on how many are on the bus. Fares will also vary depending on where you live. Leaflets are available at Upwell Health Centre.

For fares, times and Bookings please call us on

01553 770310



Sandra Kay and her team will be holding a Coffee Morning on **Saturday 28th September from 10 till 12** at the Community Centre in aid of McMillan Cancer Support. Please come along and support this very worthwhile event. There will be plenty of tea, coffee, cakes & biscuits available.

Free TV Licences

These will only be available to over 75's who get Pension Credit from June 1st 2020. Existing pensioners who have a free TV licence currently will get a letter explaining how to pay for their TV licence if they, or someone else in their home, are not on Pension Credit. The existing scheme for free licences will end in May 2020. Anyone applying for a free TV licence now will only receive one that lasts until 31st May 2020.

EDITORIAL

Hi y'all!

Well! Where to begin! Such a busy time for me this month. Thankfully the 'honey harvest' is now complete and selling well. Still lot's left though if you are interested at £5 per 1lb jar. See page 8 for all the health benefits it has to offer.

With the kids now off school for the summer holidays no doubt families will be looking for places to go for days out? So this month we've included details of Ayscoughfee Hall (cover & page 2), and the new 'tropical house' at Johnsons of Old Hurst (see page 19). Two great days out for all the family with lots of things for the children to do too!

Please come along to our **"HOGROAST" at The Old School on Saturday 31st August, 11.30am to 4.00pm** where we will also be serving **"CREAM TEAS"**. See page 23 for full details along with a list of other forthcoming FundHERONraisers! All to help fund your Community Magazine. We would love to go 'full-colour' one day!

Then of course there's all the usual features plus some sound money saving advice on page 9, and a Burglar's Story on page 14.

Enjoy! 'Till next time!

Resthand 3

DIARY DATES

Abbreviations for commonly used venues:

TS = Townley School, CCC = Christchurch Community Centre, (new Hall)

TH = Three Holes Village Hall, UH = Upwell Village Hall, WH = Welney Village Hall

Weekly events

Mondays Pop-Up Coffee Shop - 9.00-11.30am - CCC

Pilates - each Monday - 6.30-7.30pm - CCC

Wednesdays Forever Active-“Strength and Balance”- 9.30 to 10.30am - FIRST CLASS FREE- CCC

Wednesdays Rainbows & Brownies & Guides 5-15pm onwards - CCC

Fridays “Coffee, Cake, and Chat” - 2.00 - 3.00pm - Parish Church - ALL WELCOME

Fish and Chip Van visits - outside Dun Cow - 5.00 - 8.00pm

General events

Aug 10/11th 1940's Weekend at Ayscoughfee Hall - Please see cover & page 2

Aug 11th Welle Cinema -“Bohemian Rhapsody”- Doors open 1.30 for 2.00pm film, £3 per head - TH

Aug 13th Art Club - NO CLUB THIS MONTH

Aug 13th WI - Yoga Demonstration with Karen Fleming - 7.00pm - CCC

Aug 20th Gardening Club - Nigel Davies from Stow Bar Estate on Gamekeeping - 7.00pm - CCC

Aug 27th Art Club - NO CLUB THIS MONTH

Aug 27th Book Club at Kay's, Brimstone Manor, 7.30pm “The House Across the Street” - see p. 13

Aug Jazz Club - NO CLUB THIS MONTH

Aug 31st “HOGROAST” & “Cream Teas” at The Old School - 11.30am to 6.30pm - see page23

Sept 3rd Craft Club - ‘Brush Embroidery’ with Ruth Sindell - 7.00pm - CCC

Sept 8th Classic Car & Commercial Vehicle Show - 10.00am-4.00pm - FREE ENTRY - see p 28

Sept 10th Art Club - Begins again - 1.30 to 3.30pm - CCC

Sept 21st FOTS - Fun Dog Show & Summer Fayre - 10.30am till 4.00pm - Townley School Field p27

Sept 21st HeronAid II with “Gambit”- Doors open 7.00 for 7.30pm -Tickets £7.50 & £10 -CCC p6

Sept 27th WI- Cookery Demonstration with Richard Hughes -Tickets £10 - ALL WELCOME CCC

Parish Church Services

Aug 4 th	11.00am	A Day	All Age Worship
Aug 11 th	9.30am	Rev'ds S & SE Tooke	Baptism, Holy Communion
Aug 18 th	6.30pm	Rev'd L Brady	Evening Prayer
Aug 25 th	11.00am	V Smith	Morning Prayer
Sept 1 st	11.00am	A Day	All Age Worship
Every Friday 2.00 - 3.00pm Coffee, Cake and Chat in the Church building			Daphne and Andrew

PLEASE NOTE — The Heron September Deadline

*The deadline for all **copy** for **September's** edition of The Heron is **25th August.** *
However, due to the amount of copy we are getting, leave it till then we may not have space. So - **AS EARLY AS YOU CAN PLEASE !**

Advertisers - all our advert rates and conditions can be found on our website www.theheron.info Business advertisers can book series of 6 or 12 adverts, paid in advance. Adverts for village fundraising events, personal announcements, or small private ads are usually free.

At the time of going to press, all information is as accurate and up to date as we can make it. Changes and updates may be published subsequently. All information contributed by outside agencies, including dates etc., will be assumed to be correct.

NB as a matter of courtesy no content from the Heron should be used without prior permission

Letters to the Editor



Very many thanks for your kind efforts Jim. I am sure that we will make use of many of the photos on the CD in due course. Thanks again! - Ed'.

Dear All!

After the sad passing of my husband Joost Hoek on the 19th June 2019, I would like to thank everybody for all the lovely cards and for their kind words.

Sheila Hoek



A truly lovely and friendly man who will be much missed by many villagers. Especially those in the Bowling community. -Ed'.

Dear Mr Guilford,

As you are no doubt aware, one of Christchurch's former resident's, Rachel Watson, who had previously lived in Syringa House, passed away on 16th April this year. Several Christchurch residents kindly attended her funeral. Rachel named me as her executor. Her mother, Mary Corke, was my first cousin.

Whilst going through her personal effects I have come across some photos which may prove useful for The Heron. I have enclosed a CD of these for you to use as you see fit.

There are pictures of a Christchurch Parade which dates back to the late 60's and appears to include floats, fancy dress and talent aspects.

There are several pictures of Rachel in various school photos and an older school group which pre-dates her, together with a picture of an adult group featuring Mary Corke, which seems to be of a trip made to Wedgwood in Staffordshire (when?).

Finally, there are pictures of unknown people including wedding couples, a group with a girl with a very distinctive hairstyle, a WWI soldier with a lady, a WWI sailor and some 'generations' photos of ladies. It would be great to identify these and reunite the original pictures with the relatives if possible.

I will keep hunting for any further pics that may be of use to The Heron.

Kind regards

Jim Doman

(Continued in next column)

Dear Richard,

Firstly, allow me to thank you and the Elves at the Heron for the coverage afforded me in last months magazine. As I'm sure you know It can be very hard to get any media coverage at all for new music. However, there are I'm afraid several errors in the article which I should like to correct. Firstly, I did not get a paper round to buy my first guitar at fifteen or sixteen as I left school and started work at sixteen and was already a gigging musician by that time. The correct age was thirteen. It's kind of you to lower my age but I was thirteen in 1960 not fifteen.

Secondly, my first pro band did 700 gigs in two years, not the stated ten.

Thirdly, our band was spelt Baj not Badge.

Thanks once again

Steve Waye

Apologies! - Ed'.

"Back By Popular Demand"

Cookery Demonstration by

Richard Hughes for

Christchurch WI & Guests

Friday 27th September 2019

6.30 for 7.00pm,

finish 10.00pm approx.

In a career that has taken Richard from hotel pot wash to a Michelin-starred kitchen, and from his first restaurant to director of Norwich's premier venue, The Assembly House in Norwich, 2017 saw the 40th anniversary of his very first day in a professional kitchen. Richard opened his first restaurant – Number 24 in Wymondham – in 1991. In 2002, he left Wymondham to open The Lavender House at Brundall, to National acclaim and, very shortly after, founded The Richard Hughes Cookery School, winning the inaugural British Cookery School of the Year award. In 2017 he relocated the school to the Grade I listed heritage site that is The Assembly House in Norwich city centre where he is Chef Director.

Tickets £10.00 to include entry and a selection of homemade sweet and savoury refreshments. YOU ARE ALL WELCOME!

To pay and book your place, please contact Janet Harper on 01354 638681 or Elaine Reed-Hughes on 01354 638310.

FUNDHERONRAISER

The Heron

presents

Heron Aid

DOORS OPEN
7.00pm

Saturday 21st September - 7.30pm

Christchurch Community Centre

PE14 9LL

Blues

Pop

Beatles

featuring



GAMBIT

Funk

Jazz

And more

An evening of light music

Tickets £7.50 or £10 with food

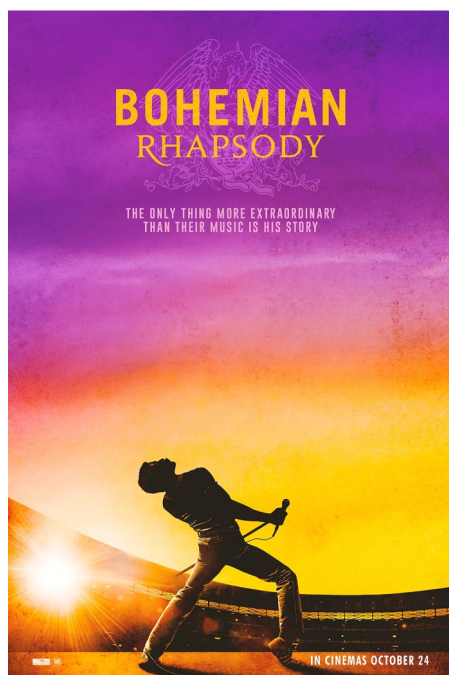
£10 or £12.50 on the door

CALL 01354 638990 FOR FURTHER DETAILS

PLEASE COME ALONG AND SUPPORT US AT THIS FUNDRAISING EVENT



THREE HOLES VILLAGE HALL, Junction of Main Road & Squires Drove, Three Holes PE149JY



Sunday 11th AUGUST 2019 2pm **BOHEMIAN RHAPSODY**

(12a) 134 mins

Bohemian Rhapsody is a foot-stomping celebration of Queen, their music and their extraordinary lead singer Freddie Mercury. Freddie defied stereotypes and shattered convention to become one of the most beloved entertainers on the planet. The film traces the meteoric rise of the band through their iconic songs and revolutionary sound. While bravely facing an AIDS diagnosis, Freddie leads the band in one of the greatest performances in the history of rock music.

Highly recommended ! - Ed'.

NO NEED TO BOOK - Admission is £3 per person. Doors open 30 minutes before screening.

Upwell Jazz Club 2019

Christchurch Community Centre (Sat Nav PE14 9LL)



The UK's first
guaranteed
banjo-free
jazz club

Sunday 29th September

Guests*: **Parisian Swing**

Parisian Swing are back, once again,
by popular demand.

Music from the era of the Hot Club of France (Django Reinhardt and Stephane Grappelli) will fill the hall. Iconic tunes from the era along with more recent melodies.

Time: 12.30pm - 2.45pm Admission: £6.50

Accompanied under-16s Free

Bar, fresh rolls, crisps and savouries available

More information from Nigel Smith on 01945 773121

What's the BUZZ!

The Health Benefits of Honey!

As promised last month, for the benefit of the uninitiated, I am going to outline here some of the amazing health benefits of HONEY! I'm still learning myself, as a relatively new apiarist! I knew it was good, but I hadn't realised that it was THIS GOOD !!!

My friend Barnabee (opposite) has done a lot to help me in this regard. You may recall that at the end of last month's BUZZ I recalled the tale of an Upwell customer, suffering with severe hayfever, who had been taking a teaspoonful of our honey each day and after JUST NINE DAYS! Her symptoms completely disappeared! AMAZING! It has been known for a long time that local honey is particularly good at helping to treat local allergies. When discussing this in Upwell Post Office a somewhat cynical customer remarked - "That's because the trees have stopped producing pollen now! It's nothing to do with the honey!" The first statement may be true, but we are still in the height of the pollen season, from grasses, flowering plants, and crops (my bees are loving it!), with very high pollen counts still being recorded on TV due to the hot weather (which my bees are not so keen on! Most are outside fanning at the hive entrances trying to provide the others with DIY air conditioning.). It's not just allergies that honey's good for!



1. It helps in creating beautiful skin,
2. Really great for your hair
3. It defends you from colds and flu
4. Helps maintain healthier blood sugar levels than processed sugar; therefore less bad for diabetics
5. Can improve your sleep
6. Soothes scrapes and burns
7. Improves your memory
8. Soothes a sore throat, especially when used in conjunction with lemon juice
9. Helps in lowering blood pressure
10. Also helps improve cholesterol and reduce levels

11. Can lower triglycerides which are a risk factor in heart disease
12. The high levels of antioxidants in honey are linked to many general health benefits

The list could go on and on as more and more medical studies discover how incredible honey really is!

For thousands of years it has been used to soothe throats and relieve cold and flu symptoms, as well as protecting the body against them.

As far back as the Ancient Egyptians it has been used as a wound dressing and to soothe burns because of its antibacterial qualities. It is a current treatment in the healing of leg ulcers.

In the case of the first two benefits on the above list honey works both internally and externally. Internally because of all the other benefits listed, particularly its antibacterial, and antioxidant properties. Externally, for the same reasons, as it soothes and protects damaged skin, aiding healing. Similarly it benefits the hair. I currently use a conditioner which includes manuka honey. If you check products out you will find that the majority of face and skin creams contain honey, beeswax and or propolis. More on the latter next time.

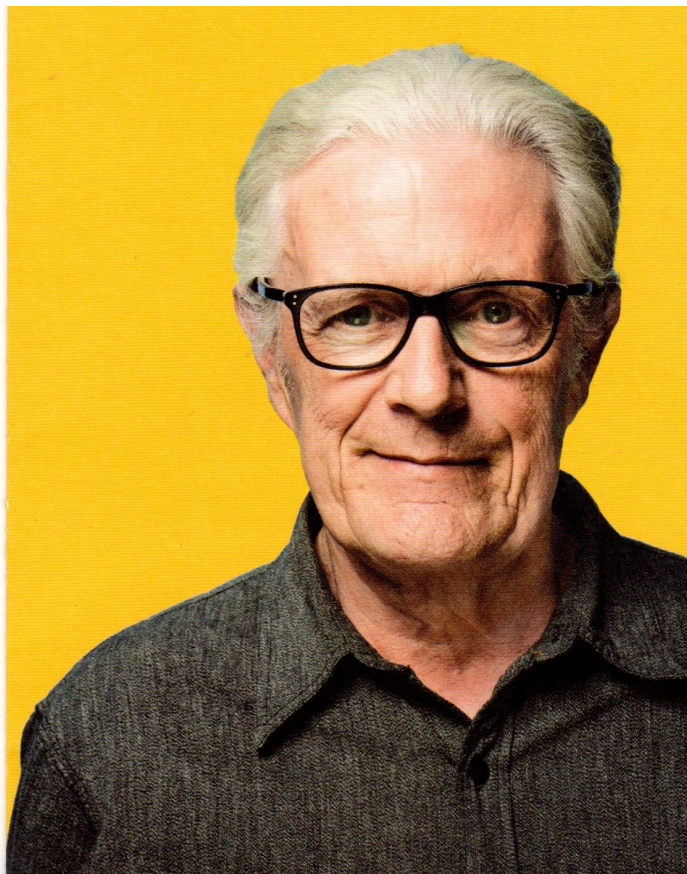
Nutritionally one teaspoon of honey contains 64 calories and 17 grams of natural sugar. Where honey shines is in its content of bioactive plant compounds and antioxidants. The darker the honey the higher the levels of these beneficial compounds. I am particularly proud of my own bees as, currently, they are producing a very thick dark honey. So far customers rave about it! Well done Barnabee and Co.!

BEE AWARE!



RWBG

Older People Are Missing Out On Money They Are Due!



Money can be tight, especially once we retire. The FREE Moneywise Guide from **Independent Age** that is available can help boost your income and cut down your bills by claiming extra money that you may not have realised you are entitled to; getting help with health and care costs, and finding free or discounted services (such as those mentioned a couple of months back in the GP Referrals article).

Topics Covered By the Guide Include Getting Help With:

- ♦ Heating your home and reducing your fuel bills.
- ♦ Health or Care Costs
- ♦ Housing costs
- ♦ Travel costs
- ♦ Emergency expenses
- ♦ The extra cost of being a carer
- ♦ Boosting your income in general
- ♦ Your taxes

Moneywise

How to boost your income and save money

NEARLY TWO OUT OF FIVE PEOPLE WHO QUALIFY FOR PENSION CREDIT AREN'T CLAIMING IT, AND IT COULD BOOST THEIR INCOME BY £1000'S A YEAR!

Top Tips:

- ♦ Get a Benefits Check. Visit www.independentage.org/benefit-check or call 0800 856 6766 to book an appointment with an adviser.
- ♦ Apply for Pension Credit if you're not already getting it, even if you don't think you qualify
- ♦ Check that you are on the cheapest energy tariff with your provider
- ♦ If you have a disability or long-term health issues, apply for Attendance Allowance or Personal Independent Payment (which has now replaced Disabled Living Allowance DLA)
- ♦ If you ever have unexpected costs to pay your local council, local charity, or other agency, may be able to help.

Independent Age are an older people's charity

who aim to provide you with advice or support directly, or to point you in the right direction. Their advice and information services are completely private, impartial and FREE! Independent Age wants to make the UK a better place to grow old for everyone. What they do is very simple and effective. They understand the issues faced in later life and campaign for change. They provide support that you can really rely on; from clear and simple guidance to a network of volunteers who help!

Helping to beat loneliness and isolation across the UK!



Order your free copy by calling freephone

0800 856 6766

and quoting the code 'Free Guide 219' or visit independentage.org/due

Maximise the enjoyment
of your home
With the professional help of

**Brimstone
Garden Design Services**

Bespoke Garden Design
to suit your
personal requirements

For free estimates
contact Cliff, on
01354 638217 or
078 08078518

cliff@brimstonegardendesign.com

Beauty Treatments

By
Jane

N.V.Q. – i.b.d. – Babtac

LCN Microdermabrasion Facials
NEW Oxygen regeneration Facials - less
outlay than Botox (a celebrity favourite)
NEW - Non-surgical firming lift and tone
St.Tropez Spray tanning
Gel pedicures
Shellac manicures
Week-end & semi permanent
eyelashes

Rose Cottage,
Christchurch
Telephone: 01354 638378




Paul Braybrooke

Oil Fired Boiler Engineer

Boiler Servicing & Breakdown Service

Commissions
Tank Replacements

Phone 01353 777788
07946 735691



live happy!
with
Slimming World

save £5
join now!
Just £9.95 on week one
then £4.95 each week

OUTWELL
THURSDAYS ~ 9.30AM
OR
THURSDAYS ~ 5.30PM

OUTWELL VILLAGE HALL
136, WISBECH ROAD, OUTWELL

PLEASE CONTACT CONSULTANT JO
07527 646062 FOR FURTHER DETAILS

WWW.SLIMMINGWORLD.CO.UK

find this delicious recipe online
f t i s l i m m i n g w o r l d . c o . u k

Slimming
WORLD
touching hearts, changing lives

FOUR SEASONS TREE SERVICES

Qualified & Professional Tree and Client Care

PRUNING ● LOPPING ● FELLING
PLANTING ● REDUCING & RESHAPING
CROWN RAISING ● HEDGE TRIMMING
THINNING ● POLLARDING ● STUMP REMOVALS
OVERGROWN GARDENS PUT BACK INTO SHAPE
FRUIT TREES TREATED ● LOG & WOODCHIP SALES



FREE ESTIMATES & ADVICE WITH NO OBLIGATION

For quality jobs at a competitive price call:

Home: 01353 721665 - Mob: 07771 707921

All work carried out to BS 3998 Standard

A genuine family managed business est. for over 30 years - Fully Insured

THE NAME YOU CAN TRUST



Environment Agency
Registered
Waste Carrier



This company offers a 7 day cooling off period

L.W Vehicle Services

Car & Commercial repairs



Est 2003

- ~ Electrical and Mechanical Diagnostics and Repairs
- ~ MOT Preparation & Testing
- ~ Servicing and Inspections
- ~ On Site Service
- ~ Breakdown / Recovery Service
- ~ Van and Car Sales

Contact Lee on 07717 738796 Or Tel 01354 610172
March Road, Welney



MOBILE CATERING

**Freshly cooked fish & chips,
sausages, chicken and pies.**

**Every Friday at the Dun Cow
from 5.00 'til 8.00 pm.**

Call 07756 170 700

to book us for your
party, function
or fund raiser.



Peggy opened the meeting and welcomed everyone.

Apologies were received from Belinda, Val, Sandra K, Sue N, Annie, Ann, Beryl, Margaret H and Emily.

Our guest speaker tonight was Tony Sigrist who owns and runs an Acupuncture practice in Ely. A member of the British Acupuncture Council, Tony gave members a brief insight into the benefits of using acupuncture as an alternative to modern medicines and treatments.

Tony informed the group that the popularity of acupuncture in the UK has grown steadily over the last few years as more and more people are discovering its benefits to physical and mental health. He explained that acupuncture is most commonly sought for the treatment of pain but increasingly people are turning to this ancient medicine for help with many physical and mental health problems. Many come as a last resort having exhausted the options of conventional medicine while others come for support alongside other treatments and some simply enjoy the relaxation and sense of well-being they get from a treatment.

Tony spoke for about an hour and then offered to answer questions from the room. He then judged this month's competition.

The competition was *A Flower From Your Garden* and Tracy announced the points results as follows:

Elaine – 3 Tracy - 4 Sandra L – 3 Kay – 3
Wendy – 3 Margaret S – 5 Sue Q – 4 Sandra L – 3
Peggy – 3 Sylvia Mc - 4

Kay and Emily both had Birthdays in July and we sang Happy Birthday to Kay (Emily being absent).

Next month's Competition is *Guess the Year of the Wedding Photograph*. Refreshments – Marion, Sylvia
McRaffle – Susan Q, Sandra K, Margaret S, Elaine

The next meeting will be held on Tuesday 13th August 2019 at 7 pm. Meetings for the rest of 2019 are:

Aug – Karen Fleming speaking about and demonstrating Yoga

Sep – Kay Miller demonstrating Needle Felting

Oct – Harvest Supper with entertainment by Magician Ricky Locke – **OPEN MEETING ALL WELCOME**

Nov – Christmas Cooking with Lorraine

Dec – Annual Meeting followed by Dr Maureen James - *'Christmas Custom and Folklore'*

Elaine



FOOD FOR THOUGHT!

Christchurch
Gardening
Club



Members are justly proud of the club's longevity, and even though twenty years is not a long time in the grand scheme of things, we have traditions that have become part of the fabric of the club. Last Tuesday 16th July the members gathered at the Community Centre for the annual buffet. This comprises of some dishes provided from club funds and sourced and cooked by members of the committee, and others bought along on the night by the members of the club. As is usually the case, there was food-a-plenty, and it wasn't too long before all those present availed themselves of a very nice plate of food, and a social evening.

This got me thinking about the way other languages seep almost unnoticed into common usage in the English Language. One such obvious word is indeed the word 'buffet', which is French for "sideboard" and refers to laying out cold and hot dishes in a public area, so that diners may help themselves. This was especially popular in the 19th century when food would be offered in this fashion at large gatherings and balls, much to the chagrin of the Scandinavians, who claim the Smorgasbord came first. It was during the Worlds Trades Fair of 1939 that the 'Smorgasbord' became internationally recognised, when it was offered at the Swedish pavilion's "Three Crowns Restaurant." Similar in concept to the "buffet" a Smorgasbord has hot and cold small dishes laid out for self-service. This Scandinavian equivalent is apparently popular amongst the Amish communities in Pennsylvania USA.

The Gardening Club members are always on the look-out to support local events, connected with gardening and so they were out in force, checking out the Open Gardens in Upwell last Saturday. Early reports are that it was a well-attended well-organized event, with stunning gardens and like-minded people sharing their advice and thoughts on horticulture. I understand they mostly made their way home carrying lots of plants for their gardens. This is also an annual event so keep an eye out for next year's dates.

The Club's next meeting is on Tuesday 20th August 2019 when we will welcome Nigel Davies from the Stow Bar Estate who will be giving a talk on Gamekeeping. Something I confess I know nothing about but am looking forward to being enlightened on the subject.

All the club's meetings and talks are open to non-members so please come along anytime. Alternatively give our club secretary a call on 01354 638 230 for details. You will be made most welcome!

Steve

Christchurch Art Group



We meet in the Community Centre on the 2nd and 4th Tuesday of the month 1.30 – 3.30pm

Our group is friendly and relaxed. We are all enjoying the sessions and have recently welcomed some new members. We look forward to any more new members giving art a try.

We have a tutor to lead and teach us, but we can also gain ideas and inspiration from each other. All artists have their own special style and approach so we have a lot of variety and enjoy ourselves

We finished this term using Chinese Brushes, Chinese ink and equipment for a different type of painting. Hopefully we will be able to meet on our last session for outside painting if the weather is kind to us.

Our attendance fee is £5 a session or £30 for the term. Once again this will be reviewed from time to time depending on numbers attending.

We welcome any new members, no need for previous experience. We all work at our own level, plenty of tuition is offered.

Do contact Sandra (638478) or Jan (638217) for more information, or pop along during the session to see what we are up to.

We have a break during August but will start again on the 10th September with a new programme.

(As usual you may always bring along your own project to work on if you prefer and I will help.)



Jan Clifford

Lovely relaxing evening at our July meeting and a very good turn out. Everyone brought along their own projects. Some were finishing off their 'Fairy Houses' from last month by decorating them with ribbons and jewels.



There was tile mosaic, sewing, crochet, knitting, drawing, and cross-stitch, to name but a few.

There will be no Craft Club in August but we look forward to our next meeting on September 3rd when we will be



doing 'Bruish Embroidery' with Ruth Sindell. This doesn't involve a needle and thread. It's actually a form of cake decorating.

New members are always welcome. Please contact Sandra Lloyd on 01354 638956 for more info.

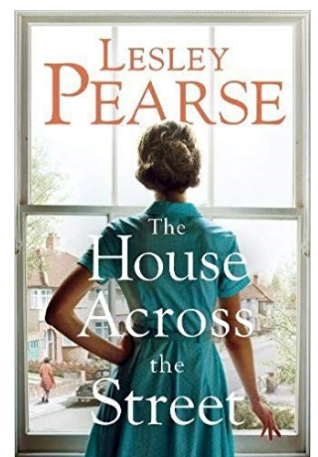
Christchurch Book Club

Book Club met on 23rd July. We had been reading "A Thousand Splendid Suns" by Khaled Hosseini. The book was extremely harrowing to the extent that most of the group didn't get very far with it. Set in Afghanistan, it is the story of two women and their troubles in a country torn by strife and brutality. It is not a comfortable read, but those members who made it to the end felt that it was worthwhile.

Our next meeting will be on Tuesday 27th August, 7.30pm at Kay's, Brimstone Manor. We shall be discussing "The House Across the Street" by Lesley Pearse.

New members are always welcome. We are a friendly bunch. We read one book per month and there are no worries if we do not get to the end. Books are supplied by the library, although some prefer to use Kindles or audio books.

For more information please contact Sheila Day on 07946 635908.



I Am a Burglar!

It's what I do! Houses, sheds, garages. I'm not bothered what I break into, as long as there's something to steal and I don't get caught. I've been caught before, a few times and I've been to prison. I didn't like jail and I don't want to go back there, but I'm a burglar, it's what I do.

What am I looking for you may ask? Easy targets, I don't want to spend ages trying to get in to a house and not managing it, and I don't want to get caught, so if there's someone at home I'll go to the house where there's nobody. That house over there looks like an easy target, there's a nice high hedge which I can hide behind and nobody can see me from the road and wonder what I'm up to. There's no car on the drive and the curtains are open. The lights are all off and it's nine o'clock at night, they must all be out, but for how long? I might come back tomorrow and see if it's the same, they're probably on holiday.

I really don't want to bump into anyone in the house, I don't want anyone calling the police on me. Some people are getting too clever nowadays and trying to fool us by making their house look like they're in when they're not. Putting things like timers on their lights and these devices that flash and make it look like there's a telly on in the house. Well they put me off. If I'm not sure I can't take the risk. I'll go somewhere else.

The places I really avoid are those that have alarms and CCTV. If someone has gone to the trouble of putting those in they really have protected their house and I reckon they will also have made sure that the locks on the doors and windows are strong. Even worse if they've got locked gates so I can't get around the back of the house.

I really hate those busybody Neighbourhood Watch types. Are they trying to gang up on me or something? I hate it when people are looking out of their windows and watching what I'm up to, signs and stickers advertising Neighbourhood Watch really put me off. Dogs don't bother me though. I'm ok with dogs and anyone who thinks that just because they've got a big dog they don't even need to lock their doors has got another thing coming.

Sometimes I'll just try my luck and walk up to doors and try them. If they aren't locked, bonus, I'll just walk in and help myself. If there's someone there I'll make up a rubbish excuse, something like "Sorry, I thought this was my mate John's house" and walk away.

Usually though I have to break in, I do that by prising the window or door with the short crow bar that I carry down

my trousers. It's difficult to prise open a door or a window with a load of dead locks on it. Easy though if they've left the key in the door – just break the glass and turn the key.

I'll nick anything but I really want stuff that I can get rid of easily; jewellery and cash mainly, and I know where to find them. They're in the master bedroom. People put them there because they think they are safe. They think "If we get broken into, they won't be able to steal our jewellery because they'll wake us up if they try to get into our bedroom". Well I'm not going to break in while you're at home am I?



Sometimes, if I can't get into the house I'll have a look in the shed, it's amazing what people will leave in there. I stole a bike the other day and got £300 for it. I reckon it was really worth two grand but some people want big discounts if the stuff's stolen. But all the shed had on it was a cheap padlock. I can't believe it sometimes. People will spend two grand on a bike, then stick it in a shed with a £5 padlock. Easy meat for the pair of bolt croppers I've got in my coat.

My life is getting harder though. The police keep on telling people to make sure they have good locks on their doors and join Neighbourhood Watch. Whatever next!? Anyone would think that they didn't want to get their houses burgled!

This article is not the words of one burglar but of many. It is written from genuine conversations with convicted burglars. Between us we can beat the burglars. For more information please visit the Cambridgeshire Constabulary website www.cambs.police.uk

Andy Street



BRIAN TWEED *and* SON LTD

FAMILY BUTCHERS

FRESH BEEF, PORK, LAMB AND POULTRY
OUR SPECIALITIES ARE HOME MADE SAUSAGES AND BURGERS
HOME COOKED HAM, ROAST BEEF, ROAST PORK AND HASLETS
ALSO HOMEMADE PIES AND SAUSAGE ROLLS

Telephone: 01945 773248 48, Town Street, Upwell PE14 9DA

A JONES & SON

TELEVISION SALES/REPAIRS/INSTALLATION

FREE LOCAL DELIVERY
FIRST CLASS AERIAL INSTALLATIONS/ADDITIONAL POINTS

26 March Road, Wimblington, March, Cambs PE15 0RN

Tel: 01354 740320
CLOSED ALL DAY TUESDAYS



FENLAND LEISURE PRODUCTS
PLAY SOLUTIONS
SCHOOLS, PARKS &
LOCAL AUTHORITIES

Designing and manufacturing
play equipment in the UK for
over 21 years specialising in:

- Multiplay Towers
- Net Play
- Aerial Runway
- Outdoor Gyms
- Roundabouts & Seesaws
- Spring Rockers
- Slides
- Trim Trails
- BMX & Mountain Bike Tracks
- Seats & Bins
- Fencing
- Surfacing Solutions
- Bespoke Build Service



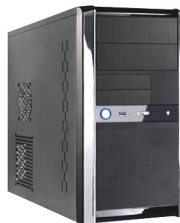
www.fenandleisure.co.uk

Tel: 01354 638359 Email: sales@fenandleisure.co.uk

Upwell Computer Repairs

Sales – Repairs - Maintenance - Upgrades

Sales & Support
Internet Setup
Virus Removal
Tuition
Web Design
Email Setup
System Installations
Data Recovery Services



Laptop Screen Replacement
Windows Reinstallation
Hardware Upgrades
Software Upgrades
On-Site Services
Custom Built PC's
Internet Security
Network Installations

Contact Lewis today for a free consultation

01945 772717 - 07849 778525

support@upwellcomputerrepairs.co.uk - www.upwellcomputerrepairs.co.uk

Parish Council Snippets

A personal apology to our newest Parish Councillor, Sharon Aldridge. I completely forgot to congratulate her last month on becoming a PC member.

CONGRATULATIONS! We often forget that Parish Council Members have voluntarily given up the time to work for the good of our community. Each of them has a home life, and other work or community commitments. Well done to Sharon, then! Great to see you on the team, not only for all that you can bring to the role, but also for helping towards evening up the Gender Balance on the Council! Not yet 50-50, so let's not be complacent.

Do you ever feel like you are going around in circles? I have to admit that was how I felt at the last PC meeting. Particularly during PUBLIC TIME ...which was extended a little as there was a lot of discussion involved.

1. The Footpath (ref PC June 2018 minutes) in front of "Building plot 1" just down from the CCC. Nothing has changed. The owner of the house came in person, with great difficulty, to make his case once again. He pointed out that he needs some action to be taken, and would consider taking the PC to Court if nothing gets done. The PC will try to move things on.

2. Martin Bowyer asked this question: "Why has the PC given up on the idea of getting a bus service of some kind?" The PC explained that there was a questionnaire inserted in every copy The Heron a few months back, but the PC only received 9 replies; 2 of which said they would use a bus regularly. Were the PC to provide a bus service, it would leave them many thousands of pounds out of pocket per year, on the off-chance that one or two folks might use it occasionally. The PC contended that this would not be a good use of public money. The person then stated that most people in one road he knows about just bin their copy of The Heron before even opening it, so they would have missed the questionnaire. *Other bus routes might be persuaded to stop in Christchurch? Great idea but they have been approached before and declined. If people wish to go to Downham Market, they need to remember that it is in NORFOLK and Christchurch is in Cambridgeshire. It complicates matters! So.... no bus.*

(See entry in Community Info on page 3 - Ed')

3. Martin Bowyer is ready to take on the job of co-ordinating the SPEED WATCH effort in the village. He just needs a few folks to volunteer – PLEASE!

All the other information can be found on the PC Website. ***NO PC MEETING IN AUGUST btw.***

Annie Nason

Local News

Council 'enforcers' moved in to remove caravans - and their occupants - from the illegal riverside site at Bedlam Bridge near March



Prior to the recent trespass a group, supposedly with permission, settled at the above site and set up an aquaculture business. In point of fact, amongst other things, they were pumping water out of the 16 Foot Bank and selling it!

A handful of caravans had recently moved onto the same field by Bedlam Bridge, on the outskirts of March, a the piece of land owned by John Gawthorp. He claimed he had verbal planning consent for the home but after a lengthy battle the council won the day and had both him and his elderly wife removed.

Ironically it is the same continued enforcement on the piece of land that the council hopes will allow a speedy resolution to getting the current occupants off their riverside temporary home.

Twelve years after a 'hit squad' of enforcers hired by Fenland Council removed a man from his home at Bedlam Bridge (they burnt it down) officials arrived last weekend with vans to remove occupants from the illegal travellers site.



The Newbie Blog



STEREOTYPES....

If I had £1 for every time someone has said – admittedly, often in jest – *“Unless you have been in a village for at least 20 years or more, you will never be accepted by the villagers”* ... I would be able

to take a number of Heron readers out to dinner! Have you come across this saying? I am sure you have. HOWEVER, I have not found this to be true of long-standing villagers that I have met here in Christchurch. I find it a very friendly and accepting place. Stereotyping is a dangerous game....

I have a few stereotypes of my own which I claim to be right...tongue-in-cheek here. How do you like this one? “The world is divided into two types of people...Crunchers and Suckers “ ... when we eat chocolate, I mean ... What say you?? Harmless enough, but when you think about it, there may just be some “Crunchers” who have a problem with their teeth and so have to end up sucking the chocolate pieces. Stereotyping leaves no room for shades in between black and white; no allowances for differences.



An example from one time in my teaching life...we were talking in class about where everyone had been born. “What about you, Miss?”. “Well, I was born in India”. “You don’t LOOK Indian, Miss!” Harmless in that instance, but packed with

assumptions about how people born in India should look. We do this kind of thing all the time, not thinking. Stereotyping is dreadful; especially when you are on the wrong side of it, but we persist. NOT GOOD!

That is what I think, anyhow

And as Lucy, from Peanuts, says

“If everyone agreed with me, they’d all be right”.



Annie Nason

Vet's View



This month I decided to tackle the grass seed issue. Grass seeds are everywhere at this time of the year and I cannot even count how many patients I have seen with grass seed foreign bodies over past few weeks.

It was the theme of the month!

It is summer season and tall, dry grass is omnipresent. The dried grass can shed seeds. Foxtail grass seeds have very specific structure, with firm, sharp point followed by stiff bristles. The way the grass seed is formed makes it only possible to move in one direction – onwards.! Stiff bristles anchor the seed making it impossible to move back. Dogs (and cats) get grass seeds stuck in their coat and, as their bodies move, so do the grass seeds.

The most common places where we find grass seeds, usually burrowed deep into tissues, are paws and ears. Once grass seeds penetrate skin they move underneath it, creating long corridors and can be extremely difficult to locate and remove. Their presence leads to pain, infection and swelling. Although the ears and paws are the most common places for grass seeds to be found we have removed a lot of them from the eyes, noses, armpits and even praepuces and vulvas. Depending on the location they can be extremely difficult to find and usually require sedation or general anaesthetic. Some animals might even need to be referred for computed tomography if suspected grass seeds are buried deep inside tissues.

So what can be done to prevent or minimise the risk? First of all if you have a long haired dog please keep their coats, especially paws and ears areas, clipped short. Always inspect your animal after the walk and if you notice any grass seeds in their coat remove them immediately. Obviously avoid letting your animals play in the tall grass – this brings us to a quite commonly raised issue - a of lack of proper dog walking areas in our village. Perhaps this is something our council could look into? If you suspect that your dog or cat has possible grass seed problem – paw looks swollen and painful, it's shaking its ears, you can see grass seed in the eye etc. please don't try rectifying problem by yourself but call your vets and let them handle the situation!



Nick



TOWNLEY SCHOOL AND PRE-SCHOOL

Christchurch, Wisbech, Cambs. PE14 9NAE
 office@townley.cambs.sch.uk
 Website: www.townley.cambs.sch.uk
 01354 638229

July 2019

Race for Life

The whole school took part in Race for Life this term! We hope to raise lots of money for Cancer Research. Our thanks to Kelly and Adam from Tesco's in March for supporting us.



Mrs Ford's Retirement Lunch

The last week of term saw us celebrate the twenty four years plus that Mrs Ford has worked at Townley. We held a wonderful lunch, where we were joined by so many of you, we barely fitted in the dining hall! We wish her well and hope that she will be back for some supply teaching next year!



It has been a busy year at Townley since I became Chair of Governors in September 18. Since then I've got to know so many children and parents and seen the school in action in so many different ways: everyone doing the Golden Mile each morning then settling to learning tasks in class. I have attended assemblies and Story Cafes where parents can join in with their children's learning.

The Friends of Townley have worked hard to support the school, hosting such events as the Dog Show, where our children brought their four-legged friends to school. This has helped to cover the costs of heating the swimming pool so that all of our children can learn to swim – an important skill in our locality. In December, it was the Christingle, a lovely community event in church to celebrate the true meaning of Christmas in candlelight.

We've had a few staff changes this year too and will be saying a particularly fond farewell to Mrs. Ford who is starting a very well-earned retirement after so many years of dedicated service to Townley – she may well have taught your children, or yourself during that time! There is a saying that goes...if nothing changed; we would never have butterflies... but some things we do not want to change. A great example of this is the annual 'Bedtime Read' which I'd never heard of before and was fortunate to take part in. Reading with groups of pj clad children in classrooms lit with fairy lights was truly magical!

We're about to take part in the community 'Cobble Project' as mentioned in the last edition of The Heron and look forward to joining in with more local projects in the coming school year.

Townley is a lovely community school, where everyone seems to know everyone else and I feel proud to be part of the Townley family and thank you all for your support this year.

Sue Rudge

Chair of Governors

Another Great Place to Visit This Summer!

Johnsons of Old Hurst Open New Tropical House!

tropical house and discover all its exotic inhabitants, right in the heart of Cambridgeshire.

Johnsons of Old Hurst already has an excellent and established set up for visiting families, with a woodland walk, play area, and a reasonably priced café and shop, selling everything from home-grown meats, to vegetables, local gins, and gifts. Better yet, there's -

SNAP UP A GREAT DAY OUT AT

Johnsons

Ahead of the Tropical House opening, the Johnsons have returned to their Johnsons of Old Hurst where the crocodiles and lizards have been waiting for their new home. The Tropical House is now open for the day.

WORLD'S LARGEST SHIP'S WRECK CLUBS REUNION

DID YOU KNOW?

Many crocodiles are at the edge of extinction, whereas some of them are classified as critically endangered. The IUCN Red List classifies the Nile crocodile as critically endangered species. Humans have forced their species to lose their habitats and they are now almost 99% of the habitat.

We first visited Johnsons of Old Hurst a few years ago, when The Farm magazine and the farm were much smaller. Back then, Andy had spent a good hour or so showing his passion for ethical farming and sustainability, as well as the need to conserve species and protect farming. In the subsequent years, he and his wife Tracy, along with their two sons, have expanded and developed their site in Old Hurst, including building and developing their Shedhouse and purchasing surrounding woodland.

Every year seems to bring something new and exciting to Johnsons, and this year is no exception. In fact, it is possibly their biggest project to date.

For over 15 years, Andy has been acquiring nesting crocodiles on his farm. The building, which has up until now been housing them, had windows of wood and to allow visitors a chance to view them. For many youngsters, this would have been their first experience of seeing such a large and almost prehistoric reptile. And while the enclosure served its purpose for that time, Andy decided that it had been built more as a viewing platform than a proper home for the crocodiles. In vision was a much larger building, with temperatures as they would be in the wild for these animals and enough room to stretch, swim and hunt.

Work began heavily on the new building in April and it's set to open officially to the public on August 4th. So what's different? "The Tropical House is more a living museum of natural history than an enclosure," Andy explained. "We've got plants in here that are natural to the habitat such as tropical trees, banana trees and vines. In time, the building will change as the plants grow and take over. The wall height of the building allowed the team to build a platform with an edge that whole area allowing visitors to look down on the crocodiles and see the natural habitat as closely as physically possible. As well as their almost famous crocodiles, Romeo, Cuddles and Sherbert, Andy has some young endangered species such as the Komodo crocodiles, but it's not just large animals, the Tropical House is also home to critically endangered Asian turtles and a giant water bug with tropical fish. There will also be iguanas and snakes in the near future and they plan for butterflies next year once the plants have settled into their new home.

Johnsons' latest attraction will be free to visitors, so why go to all this effort? It certainly hasn't been an easy journey, often an expensive fit to ensure the Tropical House remains the correct temperature of year round, not to mention the cost to install it out with the correct pumps, most people would be forgiven for accepting Andy's vision was just that - on ideas but not a reality. The Johnsons, however, are not a typical family. They pushed on through the many challenges with a smile upon their faces and are determined to make sure their own living museum is available to everyone, regardless of their background or finances. It's important to us that the next generation can see and really understand the

NO ENTRANCE FEE!

So everyone can enjoy a great day out for only the cost of lunch (or a cream-tea or two!)

Keep your eyes on Johnsons Facebook page for regular updates on special events and days out throughout the year!

The last couple of months may have been rather on the wet side but, thankfully, that didn't stop Johnsons of Old Hurst from completing their newest attraction at the family farm. There is an already established farm zoo.



The Tropical House, which they opened in mid-July, already housed resident crocodiles, Romeo, Cuddles, and Sherbert, plus their two juveniles. Now the building also has ponds and pens for snakes, as well as a new boardwalk entrance. Visitors are now able to visit the



Find out more by visiting www.johnsonsofoldhurst.co.uk or by calling 01487 824658. Johnsons of Old Hurst are at Church Street, Old Hurst, Huntingdon, PE28 3AF.

A GREAT FAMILY DAY OUT!

MAJESTIC

WINDOWS . DOORS . ROOFING
BI - FOLDS . CARPENTRY
CONSERVATORIES
COMPOSITE DOORS
HOUSE RENOVATIONS
GARAGE CONVERSIONS
FASCIA, SOFFIT, GUTTERS
FREE QUOTATIONS AVAILABLE

MIDDLE-MASS@LIVE.CO.UK

MOBILE : 07875 745125

OFFICE : 01354 461172

MARCH, CAMBS

42 ☆☆☆ Uptown Fun ☆☆☆

brought to you by Partypackage Ltd



Opening times
Mon - Fri 9 - 5
Sat - 10 - 4

www.partypackage.co.uk

Fancy Dress, Gifts, Toys, Balloons, Partyware



Come and see us
Uptown Fun
42 Town Street
Upwell
PE14 9AD

Outwell Timber

For all your Timber and Building Supplies

ISLE ROAD, OUTWELL
PE14 8TD

Tel: 01945 77 21 16

FENCING, PANELS, TRELLIS
TIMBER, PLYWOOD, DECKING

SAND, BALLAST, GRAVEL

SCREWS, NAILS, BOLTS

PAINT, SILICONE, HAND TOOLS

LOCKS, ELECTRICALS, PLUMBING,
GUTTERING

UNDERGROUND PIPE & FITTINGS

CEMENT, MULTIFINISH, PLASTERBOARD

Stressed, in pain, anxious, sleep-deprived, or generally desiring some self-care?

I offer a non-invasive, non-religious, natural, simple, and safe, form of complimentary healing for the mind, body, and soul.

Suitable for humans and pets.

Hands on/off and

Remote/Distant Healing sessions available.

Reiki promotes self-healing, relaxation and sleep. It can also help to relieve aches and pain, muscle tension, and fatigue. It assists the body to cleanse itself of toxins and helps to support the immune system.

If you are in need of any of the above described, feel free to contact me for further information, or to book a session

Email: michelelowery24@gmail.com

or call 07739 378901

A.R. CLINGO

FUNERAL DIRECTOR

**Family Independant
Business**

**Private Chapel of Rest
Personal Attention**

24 Hour Service

Full estimates given at all times

Golden Charter

Funeral Plans



Pinfold House
St. Peter's Road
Upwell, Wisbech
Phone 01945 772502

P R PARKER

Established 1978

General Building and Maintenance

CARPENTRY

REFURBISHMENT

GLAZING

PLUMBING

AND

PAINTING

PLASTERING

RENOVATION

DECORATING

BRICKLAYING

RENDERING

ROOFING

01354 638380

GUTTERING

FREE ESTIMATES

All Types - Houses - Flats - Shops - Offices

Church News



Did anyone put their mind to the question given last month in this column? ***“WHAT IS THE OPPOSITE OF FAITH?”*** You will find one answer at the end of this month’s contribution. There may be others.

We had a lovely surprise in Church on Sunday July 14th ... Rev Ian came to our Communion Service and preached the sermon! SO GOOD to see you looking so much better, Ian! Every blessing as you continue your recovery. Love to you, Lynda and the family.

This month there has been a very special service locally ... not in our Church. The usual evening service on July 21st was cancelled, and instead, we were all invited to St James’ Church to join in with the Confirmation Service held there, with Bishop Stephen (Ely) in attendance.



Confirmation happens in the Anglican, Roman Catholic and Orthodox Churches. In these traditions, infants are baptised and their parents and Godparents make certain promises on their behalf.

Confirmation is the name of the service where older children, teenagers or adults **confirm** the promises made on their behalf at baptism. It is also a

sign of full membership of these Christian communities. Sometimes adults who were never Baptised as infants wish to be Confirmed, as was the

case for two of the adult candidates in Wimblington. They were Baptised at the Font in a short ceremony at the same service, before they were confirmed. The Methodist tradition also performs Infant Baptism, and has Confirmation, but with no Bishop involved.

Other Non-Conformist Christian traditions, such as Baptists, do not have a tradition of Infant Baptism. Infants have a service of Dedication, where parents present their baby to be blessed and prayed for. Baptists don’t have Confirmation, as such. They Baptise professing believers only, which means people are old enough to make their own promises. They are then Baptised by total immersion, rather than having water poured just over their heads, which is what happens in an Anglican Infant Baptism Service.

All about outward signs of inner faith. It takes courage to go for Confirmation, or be Baptised by Immersion. Congratulations to the Confirmation Candidates; three from Wimblington and one from Christchurch.

One answer to the question “What is the opposite of Faith!” is *CERTAINTY! Think about it!* Annie



St. James’ Church, Wimblington



01945 774250 - 07887 563106

www.connies-care.net connie@connies-care.net
 Personal Care - Social Care - End Of Life Care - Cleaning -
 Dementia Care - Shopping—Sits - Over 65's Care

"HOGROAST"

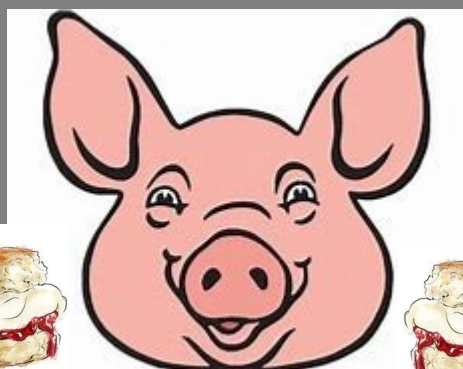
at The Old School,
Church Road,
Christchurch PE14 9PQ

SATURDAY 31st AUGUST

11.30am till 6.30pm

Beautiful Fresh Roast Pork
from March Quality Meats

"HOGROAST"



Apple Sauce, Stuffing,
& "Fantastic Crackling"

Also tea, coffee, soft drinks

"Cream Teas",

Cakes & Biscuits

"HOGROAST"

Only £3.50

COME EARLY TO AVOID DISAPPOINTMENT
PLENTY OF TABLES & CHAIRS AVAILABLE

FUNDHERONRAISERS

Forthcoming Events

Saturday 31st August

HOGROAST at The Old School

11.30am till 6.30pm

Saturday 21st September

HeronAid II with "GAMBIT"
(See page 6 for full details)

Sat. February 29th 2020

"Wisbech Rock Choir"

Saturday March 28th 2020

"The Saga Louts"

May 8th, 9th, & 10th 2020
(Bank Holiday Weekend)

"Village Plant Sale"

At The Old School

10.00am to 4.00pm

Plus "Cream Teas"

"Quotable Quotes"

*I've learned that I still have a lot to
learn.*

Maya Angelou

*Shame a few more folks don't take note
of this one! - Ed'.*



Pure Heart **Homecare Limited** **Support Workers You Can Trust**

At Pure Heart Homecare we understand home is where your heart is. We know from personal experience that the majority of people feel most comfortable in their own home environment.

We believe you and your loved ones should be cared for with dignity and respect whether you are looking for short term cover or long term ongoing help.

SERVICES WE OFFER:

- PERSONAL CARE • DOMESTIC SUPPORT
- SHOPPING • ATTENDING APPOINTMENTS
- COMPANIONSHIP • LIVE-IN CARE
- WE'LL EVEN HELP YOU TAKE CARE OF YOUR FOUR-LEGGED FRIENDS!

We are able to offer you a service which is tailored to your individual needs and requirements. If you are interested or wish to book an appointment to discuss you or your loved ones care needs please get in touch and we will be only too happy to accommodate your request.

Please contact us on: **01945 773861**

130 Wisbech Road Outwell PE14 8PF

e: admin@purehearthomecare.co.uk w: www.purehearthomecare.co.uk

Care at home... because home is where the heart is 

BUILDING DECONSTRUCTION

Buildings bought and all materials recycled/
upcycled

Pre 1930s preferred
but all buildings considered
from barns to cottages
including site clearance

FREE QUOTATIONS GIVEN

We have a large number of salvaged
ARCHITECTURAL ITEMS FOR SALE

Bricks & other building materials,
roof trusses etc.

Firewood, plants, and hanging baskets

**COME IN AND SEE US
AND HAVE A BROWSE!**

Call Matt or Sarah Lawrence on
Tel: 01354 638977 or, Mobile: 07856 291787
Toll Farm, Ha-Penny Toll Road,
Three Holes, Norfolk,
PE14 9LJ
Email: buildingdeconstruction@yahoo.com



S & H Painters and Decorators

Tel : 01354 638124

Mob: 07905145680

Steven Horne

Christchurch, Cambridgeshire

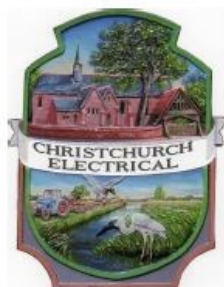
CHRISTCHURCH ELECTRICAL

Simon Freeland Hill Farm, 3 Church
Road, Christchurch, PE14 9PQ

Tel:01354 638802 Mobile:07727 046439



Domestic electrical work undertaken.
No job too small.
Free quotations / estimates.



www.electricalcompetentperson.co.uk

www.electricalsafetyregister.com



March Stationery & Print

Booklet Printing
Business Cards
Digital Photos
Leaflets
Newsletters
Banners

01354 656614

sales@marchsp.co.uk

5 Fenland Walk, March, PE15 8TW

HOUSE CLEARANCE

Christchurch
& surrounding areas

Removals & House Clearance
Garages, Sheds & Attics Emptied
Single Items to Full House
Antiques & Modern Taken
Light Removals
Valuations Given
Best Cash Prices Paid

Call for no obligation quote

01354 638178

GRANARY STUDIO
Christchurch

Contemporary pictures and bespoke framing

The Granary, Hall Farm,
Upwell Road
Christchurch Cambs PE14 9LJ
01354 638614

Useful Telephone Numbers

Age UK Cambridgeshire	0300 6669860
Alzheimer's Society (Fenland)	01945 580480
Christchurch Resident's Association	01354 638990
Churchwarden - Mrs. D. Symons	01354 638352
Citizens' Advice Bureau, Wisbech	01945 464367
Community Car Scheme (to book a journey)	07871 262818
Community Centre bookings	01354 638478
Community Fire Safety Officer	07717858166
District Councillor - Will Sutton	01354 638025
District Councillor - Michelle Tanfield	07908 707129
Electricity Faults - UK Power Networks	105
FACT	01354 661234
Fenland District Council	01354 654321
Floodline	0845 988 1188
Library - March	0354 0455225
National Debtline	0808 808 4000
Norfolk Dial-a-Ride	01553 770310
Parish Clerk - David Gibbs	07932 191050
Parish Councillor - Jill Bliss	01354 638343
Parish Councillor -	01354
Parish Councillor - Roger Gladwin	01354 638538
Parish Councillor - Geoff Harper	01354 638681
Parish Councillor - James Hughes	01354 638310
Parish Councillor - Peter Owen (Chair)	01354 638847
Parish Councillor - Kay Miller	01354 638232
Police - PCSO Sue Clarke	07738025220
Police - Emergency	999
Police - Non Emergency	101
Telephone Complaints	0345 145000
Townley School	01354 638229
Trading Standards	845040506
Train Information	08457 484950
Upwell Health Centre (and out of hours)	01945 773671
Upwell Health Centre - Pharmacy	01945 774934
Veterinary Centre - The Crossings (D'Mkt)	01366 382219
Vicars - Ian & Lynda Brady	01354 740627
Water Emergencies	08457 145145

Club Contacts

Art Club - Jan Clifford	01354 638217
Book Club - Sheila Day	07946 635908
Craft Club - Sandra Lloyd	01354 638956
Gardening Club - Marion Hawthorne	01354 638230
Short Mat Bowls Club - Wendy Keen	01945 772737
WI - Peggy Warby	01354 638339

Neighbourhood Watch

Colin Steenson - Church Rd (East)	638664
Sandra Kay - Crown Rd	638478
Shirley Knight - Church Rd (West)	638779
David Yates - Church Rd (West)	638448
Julian Swallow - Upwell Rd (North)	638679
Jackie Wood - Upwell Rd (North)	638679
Simon Freeland - Upwell Rd (South)	638802
Richard Guilford - Area Co-ordinator	638990
David Harrowing - District Co-ord.	01945 870963

And Finally!...



"See you in September - baby!"

Well...er...yes! We have **HeronAid II** with Steve Wayne's new band **"GAMBIT"** on **Saturday 21st September**. Tickets are just £7.50 or £10 with food (available now!). Should be a great night! Hope you will all come along and enjoy yourselves! All for a good cause as you well know. This is the band's debut gig so we will be very privileged! (See page 6 for full details!)



If you want to know what the strange objects above are you'll have to wait for our September issue! A great and intriguing project to beautify our bus shelter. Have we captured your interest?

Hopefully you'll come along to our **"HOGROAST"** at The Old School on the **31st of August!** Lots of lovely roast pork, crackling, stuffing and of course apple sauce. We'll also be serving **"Cream Teas"** to round off a wonderful Saturday afternoon.

So, lots to look forward to over the coming months. Check out the list on page 23. Does anyone else have any other suggestions. Would you like to organise something yourselves? Just let us know and we will give you all the help we can!

Have a great Summer!

'Till next time - Ed'.

Web links in the Heron are active when viewed in our online version www.theheron.info



FRIENDS OF TOWNLEY SCHOOL FUN DOG SHOW & SUMMER FAYRE



Saturday 21st September 2019
from 10.30 a.m.



@

Townley School Playing Field, Christchurch, PE14 9NA

**HOT FOOD, REFRESHMENTS, VARIOUS STALLS, BOUNCY CASTLE,
GAMES, CAKE COMPETITION : UNDER 12'S "4 DECORATED CUP CAKES :
OVER 12'S "DECORATED VICTORIA SPONGE (ENTRY 50p ON THE DAY)**

Dog Show hosted by The Barking Bugle

Enquiries: newsdesk@thebarkingbugle.co.uk

Cost per class £1.50 - Pay as you enter the ring (no need to pre-register)

Judging from 11.00 a.m.

Rosettes 1st - 5th place

(Rosettes donated by Vets 1 practice)

- | | |
|--|---|
| 1. Most Handsome Boy | 7. Waggiest Tail |
| 2. Prettiest Girl | 8. Prettiest Eyes |
| 3. Best Veteran (aged 7 plus) | 9. Happy Families (2 dogs or more) |
| 4. Best Rescue | 10. Best Six Legs |
| 5. Young Dog (dogs under 2 years of age) | 11. Dog the Judge would like to take home |
| 6. Townley School Dog
(Break) | 12. Fancy Dress |

**Followed by Best in Show/Reserve
(open to all 1st place winners)**



**All Dogs must be kept on a lead
Please do not leave your Dog in a hot car
Please clean up after your Dog**



Stalls : Private £10.00 / Local Charities/Organisations (Free)

Bookings : Contact Denise on 01354 638802 or friendsoftownleyfots@outlook.com



F.O.T.S is a charitable organisation set up for the purpose of raising funds to advance the education of the pupils in the school by engaging them in activities and providing extra resources, facilities or equipment
Registered Charity No. 1138203

"THANK YOU SO MUCH FROM ALL YOUR CUSTOMERS!"

To Kay Miller, Elaine Reed-Hughes and Sandra Lloyd, for getting the Pop-up Café up and running, and continuing to do it for nearly 2 years.

What an effort! Well done!

Everyone who has attended the Pop-Up Café really appreciated the opportunity to get together with friends old and new, crossing the generations, on a Monday morning. Your original vision of providing a space for folks to meet was a great one, and, as you will surely agree, it exceeded all expectations. Those who had breakfast, or bacon rolls and the like, have enjoyed them all enormously! What a great start to the new week it used to be! We will miss it greatly!

THANK YOU ALL ONCE AGAIN!



Christchurch Community Centre Family Fun Day - Classic Car & Commercial Vehicle & Motorbike Meeting.

SUNDAY 8TH SEPTEMBER 2019

(FREE ENTRY FOR ALL)

Refreshments Including – Breakfast Baps, Burgers, Baked Potatoes and more. Community Centre Bar, Kitchen Sale's, Auto Jumble Stalls, Car Boot Sales and amusements.

Please Follow Facebook page:- Christchurch Community Centre to register attendance



**Christchurch Community Centre, Upwell Road, Christchurch near Wisbech. Cambridgeshire PE14 9LL (On the Recreation Ground)
Sunday 8th Sept 2019 Starts at 10.30AM until late afternoon**

Any views expressed in The Heron do not necessarily reflect the views of The Heron Editorial Team.
The team aim to provide a balanced view of village opinions where such views are expressed.
We reserve the right to edit any submissions where we feel this is appropriate.