

The Heron

Community Magazine

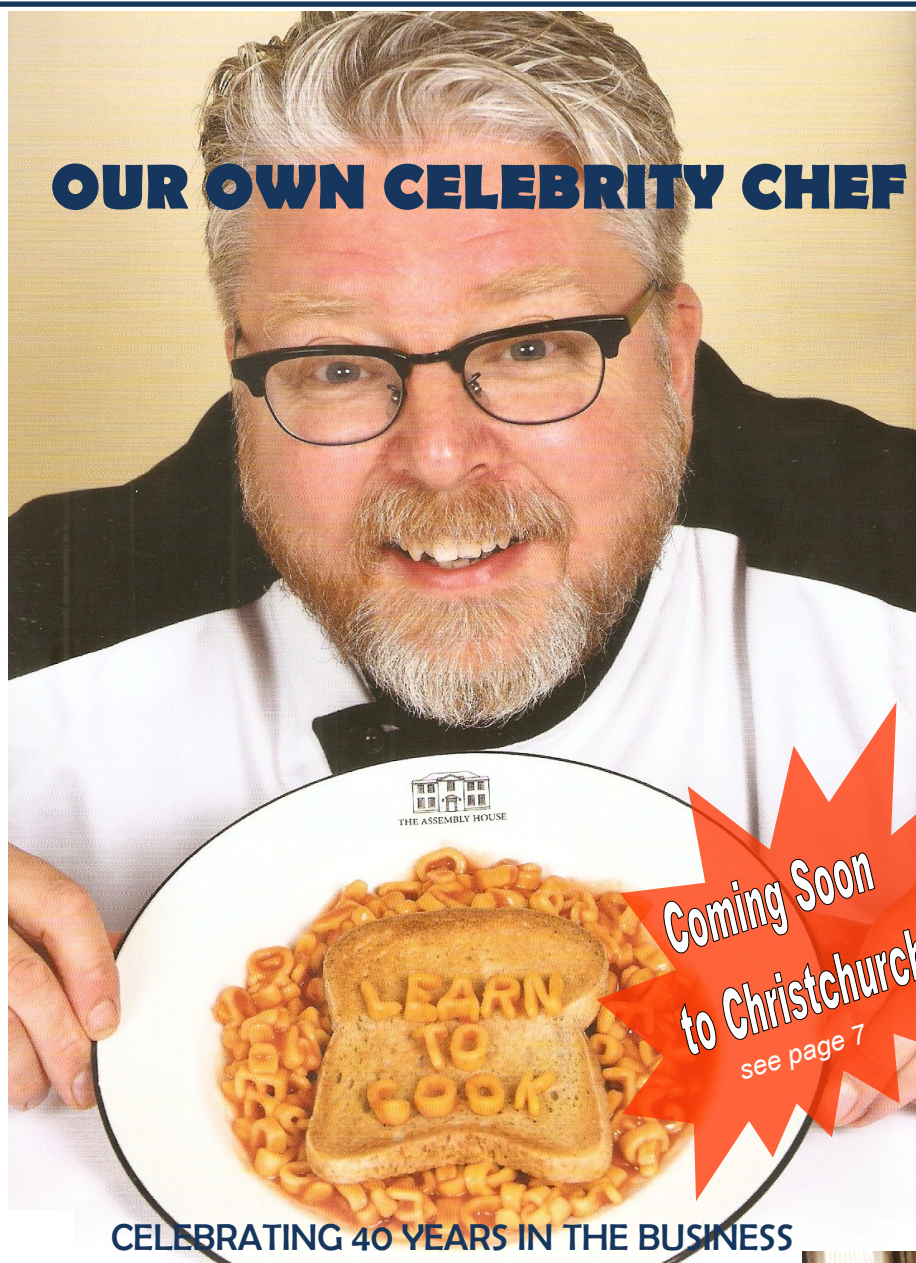
February 2017

Delivered to homes in Christchurch, Euximoor and Tipps End - £1 where sold

In this issue!

| | |
|-------------------------|---------|
| Richard Hughes | 2 |
| Community Info | 3 |
| Diary Dates | 4 |
| Church Services | 4 |
| Editorial | 5 |
| Letters to the Editor | 6 |
| WI Cookery meeting | 7 |
| Richard Hughes | 7 |
| My First Car | 8 |
| Clubs pages | 10 & 11 |
| Fire Service | 11 |
| Eccentricity - not Dead | 12 |
| Energy Swap deal | 13 |
| Don't get Scammed | 14 |
| Alan Russell Column | 15 |
| Step up or we Step in | 16 |
| Quiz | 17 |
| Fly tipping again | 18 |
| Townley Page | 19 |
| Parish Council | 20 |
| Joan Smith | 21 |
| HealthWatch Report | 23 |
| Small Ads | 25 |
| And Finally | 25 |
| Useful Numbers | 26 |
| A First Varsity | 26 |
| HeronSport | 28 |

OUR OWN CELEBRITY CHEF

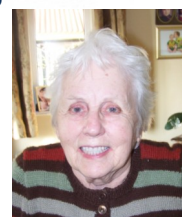


CELEBRATING 40 YEARS IN THE BUSINESS

Introduction – by Alma Hughes – his Mum

When I was first married in 1955, I moved from Rotten Drove, near The Old Coach House, to Connie Symons old home, The Old Toll House. Two years later we had our

Continued next page



Editorial Team:

Richard Guilford – Editor

Paul Haresnape – Technical Support

Vivien Haresnape – Administration

Enquiries: editor@theheron.info / 01354 638990

Advertising: adverts@theheron.info / 01354 638381

Web Site: www.theheron.info



first son David, four years later in 1961 Richard was born, and four years after that our third son Philip.

Richard did show an interest in cooking when he was a young lad but no more so than any interested child of his age helping mum. So we were quite shocked when, three weeks before his 16th birthday he upped sticks and went to work under Mr Mobbs at the Imperial Hotel, Norwich. I must



say they looked after him very well, treating him like a son, and gave him a firm grounding in his newly chosen profession. We are all very proud of him. He has gone from strength to strength. I'll let Richard take up the story from here.

+++++ +++++ +++++

It's a long time since I first started out on the road to becoming a chef. After writing to more than 40 hotels to try and get a job in the industry, I finally secured a place on the Chef's apprentice scheme at The Imperial Hotel in Great Yarmouth at the tender age of 15, just 3 weeks before my 16th birthday. Having lived in the Fens all my life, I thought Great Yarmouth was the most exciting place on the planet! It was the later 1970s and it took us three hours to drive there from my parents' house in Christchurch. To me Great Yarmouth seemed like Las Vegas, with its glitzy fairground attractions, bars, restaurants, and seafront Hotels. When I moved there I felt as if I was embarking on a massive adventure.

However, that was now 40 years ago and I have worked in the hospitality business ever since. I am still thankful to Roger Mobbs, who owned the Imperial Hotel at the time, and the Head Chef Joe Gilham, for their training, their discipline, and their endless patience. The Apprenticeship Scheme was a strict regime and only two school leavers were taken on every year. I spent two days a week washing up, two days a week in the kitchen, and one day a week at Great Yarmouth College to gain the necessary qualifications.

Fast forward almost 15 years and I opened my first restaurant, Number Twenty Four, in

Wymondham . I had always wanted to open my first place by the age of 30, and after hunting far and wide for suitable premises and borrowing against the house, I just made it. But after working day and night, things started to look up, and, best of all, the customers liked my cooking. During my 11 years there I also taught at the Hotel School at Norwich City College. Having sold Number Twenty Four in 2002, we took over The Old Beams in Brundall, changed the name to The Lavender House, and was there for 14 years achieving national acclaim. Shortly after starting Lavender House I set up my first cookery school there.

Before working for myself, I worked in all sorts of establishments, from the Michelin-starred Rookery Hall in Nantwich, Cheshire, to South Walsham Hall on the Norfolk Broads; I even had a secondment at The Ritz. Back in Norwich, I loved my job as Head Chef at the Theatre Royal during Dick Condon's reign, where we cooked for actors, performers, and singers, as well as members of the audience.

Having owned and run four other restaurants over the years, most recently, seven years ago, we moved to the Grade 1 listed heritage site The Assembly House in Norwich City Centre. The Assembly House has a capacity for 1000 people and comprises restaurant, numerous conference rooms, dance hall, and crypt. As of the beginning of 2016 we have also added 11 luxury bedrooms. I have just relocated the Richard Hughes Cookery School there at the beginning of this year (see page 7); winning the inaugural British Cookery School of the Year. You are all welcome to come and visit us.

more on page 7

Community Information

Mobile Library: first Friday each month - in the Lay-by Upwell Road 15:00 - 15:40
Probably changing to Tuesday lunchtimes in April - watch this space or ask at the library van for more information

Mobile Post Office:

visits Mon - Thu in the Lay-by Upwell Road
Monday and Thursday 16:30 to 17:00
Tuesday and Wednesday 16:10 to 17:00
Fridays - no service

Dun Cow Meal Deal on alternate Wednesday lunchtimes - 2 courses for £5.50 - Pre-Booked places ONLY.
This month's dates are 8th and 22nd Feb

Pilates class is now in the Community Centre on Mondays at 6:30pm

Nuisance Calls - do they worry you? - If you are a BT landline user, there is a new service offered FREE to allow you to block such calls. Called "BT Call Protect" - it's easy to set up and use and YOU can decide what you want to block! All new and existing BT home phone customers can opt in at bt.com/callprotect or 0800 3281572

Heron needs your help - Becoming a bit urgent - we need one or two people to join our wonderful delivery team to bring the Heron to Euximoor each month. We would provide training, and show you the ropes. Ring Sandra Kay 638478 for an informal chat to find out more. PLEASE!

Also - PLEASE mention the Heron when contacting advertisers, as it helps them see that the Heron is providing a useful service.

Contact the Parish Council?

phone numbers: in Useful Numbers p26,
email: christchurchcambspc@gmail.com
website: christchurchpc.btck.co.uk

Does anyone know the whereabouts of Peter Carter, the now retired 'last Eelman of the Fens' who was featured in the February 2016 edition of The Heron?

Any contact details would also be much appreciated.
Please email graham@killercreative.co.uk and mention the Heron - Many thanks.

At last the Speedwatch Team will be swinging into action between the middle to the end of February. No of course we're not going to list the actual date! We want to catch some speeders! Or at least put them off and slow them down a bit. Watch out for the warning signs on the day!

The Art Club has spaces available - come and have a go! see Page 10 for details

Pride of Fenland Awards are happening again - closing date for nominations 5pm on the 13th February 2017

This year awards are split into

- ♦ Good neighbour
- ♦ Group, club, organisation or charity benefiting the community
- ♦ Volunteer in the community
- ♦ Young person (carer or community volunteer)

Call Community Support Team for nomination forms on 01354 654321

The Parish Lunch will be on Sunday 23rd April. KEEP THE DATE. Everyone who lives in the Parish and who is, or whose partner is, 65 or over - is welcome! We will put all the finer details in next month's Heron!



Baby-Friendly Pop-Up Coffee Shop
Christchurch Community Centre
Every Monday Morning
(Starting on 6th February)
from 9.00 am till 11.30pm
Coffee, Tea, Squash. Biscuits and
Homemade Cakes and Cookies.
Pop along for a cuppa and a
chat. All welcome.
We look forward to seeing you.

Weather Lore

If Candlemas Day is bright with sun,
Your winter is only just begun.
But if Candlemas Day is dull with rain,
Your winter won't come back again!

by your Local Weather Sage
Candlemas Day is 2nd February - Ed'.

DIARY DATES

Abbreviations for commonly used venues:

TS = Townley School, CCC = Christchurch Community Centre, (new Hall)

TH = Three Holes Village Hall, UH = Upwell Village Hall, WH = Welney Village Hall

If you have any important up and coming events let us know for inclusion here:

| | |
|----------------------------|--|
| Feb 3 th | "Cake, Coffee and Chat" Parish Church 2-3pm - All Welcome |
| Feb 3 th | Mobile Library visits - Upwell Rd Lay-by 3-3:40pm |
| Feb 6th | *NEW* 'Baby Friendly' Pop-Up Coffee Shop - 9am to 11:30am - CCC |
| Feb 6 th | Pilates - 6:30-7:30pm - £6 (monthly discount) Info - Jane Green 01354 638378 - CCC |
| Feb 7 th | Christchurch Craft Club - - CCC - 7pm |
| Feb 10 th | "Cake, Coffee and Chat" Parish Church 2-3pm - All Welcome |
| Feb 13th | *NEW* 'Baby Friendly' Pop-Up Coffee Shop - 9am to 11:30am - CCC |
| Feb 13 th | Pilates - 6:30-7:30pm - £6 (monthly discount) Info - Jane Green 01354 638378 - CCC |
| Feb 13 th | Christchurch Parish Council Meeting - 7:30pm - CCC |
| Feb 14 th | Art Club - Washes, Sky and Clouds - 10am to 12 noon - CCC |
| Feb 14 th | WI - The Secret Life of Sweets - Speaker from Mr Simms Sweet Shop - 7pm - CCC |
| Feb 17 th | "Cake, Coffee and Chat" Parish Church 2-3pm - All Welcome |
| Feb 20th | *NEW* 'Baby Friendly' Pop-Up Coffee Shop - 9am to 11:30am - CCC |
| Feb 20 th | Pilates - 6:30-7:30pm - £6 (monthly discount) Info - Jane Green 01354 638378 - CCC |
| Feb 21 st | Garden Club - AGM - 7pm CCC |
| Feb 22 nd | Christchurch Book Club - 7:30pm - 5 Fen View - info - Sheila Day 07946635908 |
| Feb 24 th | "Cake, Coffee and Chat" Parish Church 2-3pm - All Welcome |
| Feb 26 th | Jazz Club - only £5 entrance - 12 noon - CCC - Bar and Refreshments |
| Feb 27th | *NEW* 'Baby Friendly' Pop-Up Coffee Shop - 9am to 11:30am - CCC |
| Feb 27 th | Pilates - 6:30-7:30pm - £6 (monthly discount) Info - Jane Green 01354 638378 - CCC |
| Feb 28 th | Art Club - Landscapes - 10am to 12 noon - CCC |

Parish Church Services

| | | | |
|----------------------|--------|-----------------------|---|
| Feb 5 th | 11am | Rev L Brady, A Day | All Age Worship in Parish Church |
| Feb 12 th | 9:30am | SE Tooke, R Holding | Holy Communion |
| Feb 19 th | 3:30pm | Rev S Tooke, SE Tooke | Evening Prayer |
| Feb 26 th | 11am | SE Tooke | Morning Prayer |
| Mar 5 th | 11am | Rev L Brady, A Day | All Age Worship in Parish Church |

Every Friday 2-3pm - Coffee, Cake and Chat in the Church building

The Heron Deadline

The 25th of the previous month is the deadline for all copy. However, due to the amount of copy we are getting, if you leave it till then, we may not have space. So - AS EARLY AS YOU CAN PLEASE

Advertisers - all our advert rates and conditions can be found on our website www.theheron.info
Business advertisers can book series of six or 12 adverts, paid in advance. Small private ads are charged by the word. Village fundraising events or personal announcements are usually free.

At the time of going to press, all information is as accurate and up to date as we can make it. Changes and updates may be published subsequently. All information contributed by outside agencies, including dates etc., will be assumed to be correct.



Removals & House Clearance
Garages, Sheds & Attics Emptied
Single Items to Full House
Antiques & Modern Taken
Light Removals
Valuations Given
Best Cash Prices Paid

Call for no obligation quote
01354 638178

Beauty Treatments By Jane

N.V.Q. – i.b.d. – Babtac

**LCN Microdermabrasion
Facials**

**St.Tropez Spray tanning
Gel pedicures
Shellac manicures
Week-end & semi permanent
eyelashes**

**Rose Cottage,
Christchurch
Telephone: 01354 638378**

EDITORIAL

A few months back whilst round at Joan Smith's she showed me a cookery book by Richard Hughes – celebrity chef. Though I had heard of him of course I had not realised that he was a Christchurch lad, being one of Alma's three sons! I chatted with her recently.

We are proud to feature him in this issue of The Heron (cover and page 2) and help him celebrate 40 years in the hospitality business. Why not go along to the W.I.'s forthcoming Open Meeting to meet him and enjoy a cookery demonstration. More details about that on page 7.

Pride of Fenland Awards are detailed in Community Info on page 3. Are we worthy?

Interesting bizarre happening up Green Lane on page 12, special energy deals in Cambridgeshire on page 13, and a warning against computer scams on page 14, including a personal one from Paul.

We carry on with the notes left for us by Alan Russell on page 15, and, sadly the Dog-Poo issue raises its head again on page 16. Now it's getting serious!

Similarly, unfortunately fly-tipping has become a major issue again recently (see page 18). Some important Parish Council Snippets on page 20 and an 'urgent' message from Fenland District Council on page 21.

Don't miss out on the Healthwatch article on page 23.

We've been looking forward to the start of Steve Drawbridge's three part article (pages 26 & 27) our new rugby pundit who has kindly invited me to a pre-match dinner over at Ely next Wednesday (1st February). More on that next month.

Then, as always, there's all the usual features for your information and enjoyment – hopefully!?
'Till next month!

Richard



*Perhaps an option in the absence
of a bus through the village -
Any willing farmers?*

Letters to the Editor



Dear Editor,

On behalf of the Royal British Legion Poppy Appeal, I would like to thank everyone in Christchurch who supported the Appeal. Thanks to Sandra, Ann and Annette, we managed to cover all the streets in Christchurch. Also a special thanks to Alma Hughes, who came out of retirement to help. We welcome Andrew Murray, our new poppy seller and thanks Andrew for volunteering. However, we still need cover for Padgetts Road and Green Lane, so if anyone could help out with these roads please contact Lesley Kennedy on 01354680401.

The money raised to date from Christchurch and Manea is £2965.07 and thanks to everyone who donated to the Poppy Appeal. Your generosity is much appreciated.

Lesley Kennedy

Poppy Appeal Organiser

Dear Editor,

Just a quick enquiry regarding the [play] park. Prior to the village hall being rebuilt there were various articles in the Heron in which it was stated that the existing play equipment would be refurbished and re-sited on the recreation ground. However, this has yet to happen. Would it be possible to have an update regarding this?

Many thanks,

Natalie Paine and Luanna Carver

Natalie and Luanna - I've passed your email on to the Chairman of the Parish Council and he's put it on the Agenda for the next meeting - on 13th February at the Community Centre - you could go along and get the answer first hand, as well as having your own say in Public Time - Ed'

We had a nice letter from Barbara Kingman, one of our postal subscribers. She wrote,

'I do enjoy keeping up with all the Christchurch news and must congratulate you on the design and format of The Heron. It brings back happy memories of working for the Parish Council and also working with Pat and Les when we re-started the magazine in 2002.

Long may it continue!

With best wishes,

Barbara

(Barbara no longer lives in the village, but many of you will remember her as a previous clerk to the Parish Council. In May 2002, she helped Pat and Les Mills to relaunch The Heron. It had folded at the end of 2001 when the previous editor, Andrew Laing, could no

longer continue. Pat continued as editor for the next ten years!)

If you have any family or friends outside the village who would like to receive The Heron by post every month, they can join our postal subscription scheme for £25 per year. Forms are on our website, or from Paul and Vivien at 'Glynan' Crown Rd. - Ed'.

Dear Sir or Madam,

Happy New Year. I hope this email finds you well.

I am writing to introduce Pitman Training Cambridge, an established training provider with a wealth of experience in helping individuals and employers pick a tailored solution for their CPD requirements. We provide flexible and self-paced programmes which can be completed in our centre in the heart of Cambridge, at home or in the workplace.

You may have heard of Pitman Training already, which has been training the UK workforce since 1837 with the invention of shorthand. Today, we still offer shorthand training, but as you'd expect, we've well and truly moved with the times to deliver training across a range of skill areas. See training-for-my-staff for a full list of our courses, Awards and Diplomas. We can work with you to find a tailor made solution to meet your staff training needs, including CPD accreditation.

Would any of our training programmes be of interest to you, any of your colleagues or readers?

Regards

Hassan Shami

Director

Pitman Training Cambridge

www.pitman-training.com

1st Floor, St Andrew's House, St Andrew's Street, Cambridge, CB2 3BZ Tel: 01223 640602



Why not come along to
Christchurch WI's Open Meeting
on Tuesday 14th March
Christchurch Community Centre
starting promptly at 7pm?

RICHARD HUGHES

(as featured on the Heron cover)

will be carrying out a
COOKERY DEMONSTRATION
and answering your questions

Refreshments will also be available

The meeting is open to ALL -
non-members £5.00 per head

To book your place please telephone
Peggy on 638339 or Beryl on 638135
by the 28th February at the latest!

Richard Hughes - Cookery School

Whether you are looking for a gift for a food fanatic or for someone that loves nothing more than learning new skills in the kitchen, the perfect present ideas for everyone, with gourmet gifts for adults and children alike, can be found right here! The Richard Hughes Cookery School opened at the beginning of this year in its own dedicated space in the west wing of The Assembly House in the heart of Norwich City Centre. With a beautiful bespoke kitchen made by Kestrel Kitchens of Great Plumstead, equipped by The Cookshop at Jarrold Department Store. There are a huge variety of courses to suit home cooks of all ages and abilities on offer since January 2017.

Each of the courses is taught by Richard himself, who guides students through the skills and techniques needed to create exciting and delicious dishes which you can then take home to share with your loved ones.

There are a delicious and diverse range of classes to tempt every taste bud. The full list can be viewed online-

enquires@richardhughescookeryschool.co.uk.

Students can even enjoy a cook's tour of Norwich's famous market before a lesson using the freshest ingredients imaginable.

Every course offered is available as either a gift voucher or a gift box. Boxes include a voucher for the class of your, or the recipients choice, a Richard Hughes Cookery School apron, Richard's Recipe Calendar, and a host of sweet treats made by the famous team at The Assembly House.

If you're lucky you might even get to benefit from the gift you give when the recipient offers you the fruits of their labour when they are back home in their own kitchen! - See top of previous column for invite to Richard's demonstration at WI's March Meeting!



FENLAND LEISURE PRODUCTS PLAY SOLUTIONS SCHOOLS, PARKS & LOCAL AUTHORITIES

Designing and manufacturing
play equipment in the UK for
over 21 years specialising in:

- Multiplay Towers
- Net Play
- Aerial Runway
- Outdoor Gyms
- Roundabouts & Seesaws
- Spring Rockers
- Slides
- Trim Trails
- BMX & Mountain Bike Tracks
- Seats & Bins
- Fencing
- Surfacing Solutions
- Bespoke Build Service



www.fenandleisure.co.uk

Tel: 01354 638359 Email: sales@fenandleisure.co.uk

My First Car - Richard Guilford

This month we've persuaded our editor to come from the shadows and tell us about his first car!

Philip Camp became my long term childhood friend prior to my going to university. He had been made my minder at primary school when we'd moved from Stoke Newington to Ilford when I was eight. Later when I passed my driving test first time aged nineteen in 1969 I bought my first car from him for the princely sum of £10.



It was a 1953 Ford Anglia 103E, though that particular year had a Popular style grill for the European market. It had only three forward gears, and reverse of course, with a very long gearstick, and a wooden chassis. Also a starting handle, which I used on more than one occasion. I had several happy years of motoring with her until my final year at college in 1974 when I sold her for £10 and bought a Morris Traveller.

There are many tales I could tell of my travels in my old Ford. During her tenure I performed a full decoke on her engine including regrinding the valve seats. I was often at the local scrap yard getting odd bits and bobs such as door handles, indicators, and the like to keep her roadworthy. It was on one of these occasions that I found an old scrapped model with a heater! Something my old Ford didn't have up to then.

I managed to remove said heater and paid just two pounds for it! It was 1972 so what might that equate to now? One weekend I managed to fit my 'new' heater having purchased two new water pipes for the engine's cooling system with the necessary 'spurs' on them. The heater comprised a small 8"x6"

Let us know what your first car was, and some of your memories of it - we'll help with writing and photos if needed!

radiator with an electric fan behind. The mistake I made was to connect it up to the cooling system using two pieces of garden hose. Not even a quality reinforced one but a cheap polypropylene one.

So it was, returning to college down the Mile End Road, that I thought the electrics had gone when the car filled with smoke! It wasn't smoke it was

steam! I looked down and saw a puddle of hot water lapping around my feet! The hoses had melted and dropped off! I opened both front windows and continued my journey with steam emanating from both sides of the car. It must have looked both alarming and amusing to any observers passing by. I quickly realised that this could not be sustained as the car was losing water at quite a rate and I risked the engine seizing!

I pulled off the road and telephoned my dad who came out and towed me home.

That too was not without incident as it was rush hour by then and one

unobservant driver tried to pull-in between us having neither noticed our tow rope or the large notice on the rear of my car saying "ON TOW!"

I have many fond memories and anecdotes of my old Ford and other vehicles owned and driven since. I cannot close without mentioning my favourite so far. A Vauxhall Astra GTE which served me well during several years of "repping". It was a pleasure to drive, glue on the road (I never felt safer), and went like the 'proverbial' off a shiny shovel!





Golding Feeds & Nursery Ltd

*For all of your Pet, Animal & Garden Requirements
Hall Road, Outwell
Wisbech, Cambs. PE14 8PE*

**Open 7 days a week: Mon - Fri 8am - 6pm
Sat 8am - 5pm
Sun 9am - 2pm**

*Tel: 01945 772802
Mobile: 07768 397626
Fax: 01945 773159*



*email: taglodge@aol.com
www.goldingfeedsandnurseryltd.com*

A JONES & SON

TELEVISION SALES/REPAIRS/INSTALLATION

FREE LOCAL DELIVERY
FIRST CLASS AERIAL INSTALLATIONS/ADDITIONAL POINTS

26 March Road, Wimblington, March, Cambs PE15 0RN

Tel: 01354 740320
CLOSED ALL DAY TUESDAYS

SANDRA KAY

SOFT FURNISHINGS & CURTAINS

HAND MADE (your own fabrics)

01354 638478

Farmers/Craft market and Coffee Shop

Lakesend Village Hall

**starting 7th Oct 10am-3pm then
every Friday until March 2017**

J. Mallett Carpentry

*All types of carpentry work undertaken including
doors, laminate flooring, kitchens.*

Contact Jonathan Mallett

t. 01354 638656

m. 07581 368725

j.mallettcarpentry@hotmail.co.uk

www.facebook.com/jmallettcarpentry
www.tackk.com/jmallettcarpentry

Jabilee Handyman Services

Window & Gutter cleaning

to

Gardening & Maintenance

No Job Too Small

Ring Lee or Emma

01354 638 098 / 07486 397 510



**ADVERTISE IN THE
HERON**

**You could use this
space for £34 per year
Other sizes and rates
are available online at
theheron.info**

Upwell Computer Repairs

**Virus Removal - Upgrades - System Service -
New Machine setups - Wireless setups -
Printer setups - Call out repairs**

**Phone - 01945 772717/07849 778525
E-mail - upwellcomputerrepairs@gmail.com**

BRIAN TWEED & SON LTD

**Family Butcher
Town Street, Upwell.**

Tel: 01945 773248

**Fresh beef, pork, lamb and poultry.
Our specialities are home made
sausages and burgers.
Home cooked ham, roast beef,
roast pork and haslets.**

We were welcomed by our new President, Beryl Brooks

19 members and three visitors attended our first meeting of 2017, when we enjoyed a fish and chip supper by Fenland Catering, beautifully cooked and piping hot thanks to Michelle and Michael, followed by a light dessert.

A Thank You - on behalf of members, Tracy presented Peggy, our retiring president, with a gift of appreciation.

This Month's Competition - an old newspaper or cutting. There were 12 entries in all, which brought back many memories of local and special royal events. It was so interesting, especially seeing the larger newspapers as they used to be, that we hope to hold it again another evening.

Results - 5pts, Sandra Lloyd, 4pts, Sandra Kay, Beryl Brooks, Anne Atkinson, Peggy Warby, Tracy Day, Wendy Yates, Sue Norman, Viv Haresnape, Susan Quail, Ann Hicks, Marion Hawthorn.

The evening ended with the usual raffle.

Outings - Jigsaw morning at Sutton, 10 pin bowling at Guyhirn, Quiz night at Fridaybridge, 'Feel the Love' afternoon at Christchurch.

Forthcoming events - Cookery demonstration with Richard Hughes.

Next Month - the speaker is from "Mr Simms" Ely sweet shop, speaking about The Secret Life of Sweets - the competition is a Valentine Card.

Refreshment rota - Ann Hicks and Alma Hughes,

Raffle rota - Sandra Kay, Wendy Yates, Ann Hicks and Sue Norman.

Please feel free to phone Peggy on 01354 638339 with any enquiries.



Art Club -

Our January sessions we were concentrating on drawing exercises with



various drawing materials then we will be looking at washes and wet in wet techniques.

Our group is friendly and relaxed. We are all enjoying the sessions and would love to welcome some more members. We have a tutor to lead us, but we all can learn as much from each other and gain in confidence. All artists have their own special style and approach so we have a lot of variety and some very good art

In our December session we concentrated on seeing how many colours we could mix with just the three primary colours of red, blue and yellow. It was fun and most of us produced a wide range. Proving that we only needed to buy three tubes or pans of colour! Not an expensive start for anyone wishing to begin to explore watercolour techniques

Do contact Sandra (638478) or Jan (638217) for more information, or pop along during the session to see what we are up to. We normally meet on the 2nd and 4th Tuesday of the month at 10am to 12 noon. (term time).

14th February Session Washes, Sky & Clouds
28th February Session Landscapes

Christchurch Book Club

Book club met on 25th January.

We had been reading "The No 1 Ladies' Detective Agency" by Alexander Mc Call Smith. All enjoyed the book, it was an easy read and introduced us to an interesting culture.

Our next book is "Agatha Christie", a biography by Laura Thompson.

We shall be meeting to discuss it on Wednesday 22nd February, at Sue's, 5, Fen View.

New members always welcome.



Our January meeting was "bring and do".

It was quiet but we all had a story to tell about our Christmas holiday.

The committee meeting is a bit late due to illness. We hope to have it later this week.

We will be doing the plan for 2017.

In February we look forward to learning about and doing "wax painting" with Margaret Sparrow .

Happy New Gardening Year!

Well here we are again as we begin our New Year journey with the world looking decidedly different from this time last year, as Britain casts off from Europe and the Donald takes leave of Mexico using the biggest garden wall imaginable. I wonder how he got planning permission? Still as the world descends into chaos, there's always the Garden, assuming you can see to the end of it through the fog as you arrive head long in the cabbage patch due to ice on the path. Oh Dear!

Never mind, there are positives, Spring is just around the corner and the Garden Club is still alive and kicking, looking forward to another twelve months of monthly meetings; with all the favourites returning such as the Buffet, The Fish and Chip Supper, Coach Trips, The Plant Sale, even maybe a little Bingo! Oh and of course our speakers who will share their great knowledge with us about gardening, as I'm sure, on some issues, some of our members will in return. They're a clever lot really.

Tuesday 21st February sees the Club's annual

AGM take place. This is an important evening as the committee who will run the club for the next twelve months are up for election. All members are entitled to vote and put forward any ideas they may have for the progression of the club, so it would be very helpful if as many members as possible could attend.

I think the members and friends of the club would agree that last year was a particularly good one with many highlights such as the trip to Hampton Court as well as some great speakers. I'd guess we would all remember the visit of Jeni Cairns to the club. A Gold Medal winning, Best in Show Garden Designer of the highest calibre, and a very friendly and helpful speaker who gave some very relevant advice on Garden Design. Our visit to the Abbey Walled Garden was one of my personal favourite evenings; all arranged by our Club Secretary Marion Hawthorn, who is beavering away to come up with another year of offerings to tempt members and friends alike.

At this point I would like to mention again that we as a club always welcome new members. Please just come along on the night. All our meeting dates are always listed on The Heron's Diary Dates page, or call 01354 638 230 for more information.

Steve

CAMBRIDGESHIRE FIRE AND RESCUE SERVICE

ON-call firefighters are a vital part of today's fire and rescue service, providing an efficient, effective service that gives emergency cover to more than 90 per cent of the UK. In Cambridgeshire they make up 56 per cent of the workforce. An on-call firefighter is not based at a fire station but carries a pager and responds to emergency incidents as and when they happen.

They receive an annual wage to reflect the time they commit to being available plus additional payments for attending incidents and drill nights (one evening a week for two hours).

On-call firefighters are men and women who may have other jobs and are able to provide evening, daytime or weekend cover. When they are on-call they may be at home, working for themselves or for a nearby company or out in their local community (staying within a five-minute travel time of the fire station) and are generally located in rural communities, small towns and villages.

If you would like to become an on-call firefighter, or find out more, then please go to our website at www.cambsfire.gov.uk and search for on-call firefighter under the careers section.

For the latest news, incidents and safety advice, or to contact us, log on to www.cambsfire.gov.uk. Sign up to email alerts and find us on Twitter, Instagram, YouTube and Facebook.



Eccentricity is not dead - Paul Haresnape

For a large part of last year I had been aware of a rather strange feature whilst I had been on my daily walk.

I can't remember when it first appeared, but I do remember thinking, "What's that all about?" And now I know.

You may remember in March last year we were contacted by a reader asking if there was a need for a Book Swap Centre, and we found out that there were various ways that this could be done. Indeed, we found that the Little Local village shop

had already been doing just such a service. Well whether it was due to the demise of the shop, or not, we do now have such a service. And that's what I had seen! A book swap library. And here it is. Located at the far end of the Green Lane Drove, is a little bit of eccentric culture!



Filled with surprise, open the lid and you'll be thrilled to see what you could read next, but don't forget to leave an offering of your own!

If you know which benefactor has provided this "gem in the fen", please let us know! But whatever you do take a book you've enjoyed and leave it for someone else!



Paul Braybrooke

Oil Fired Boiler Engineer

Boiler Servicing & Breakdown Service

Commissions
Tank Replacements

Phone 01353 777788
07946 735691

Cambridgeshire residents offered exclusive energy rates

The council has partnered with iChoosr, the UK's leading expert in collective energy switching, to deliver bespoke and highly competitive energy tariffs. Now is the ideal time for residents, especially those on standard tariffs, to switch.

Residents are encouraged to register on the Cambridgeshire Energy Switch scheme to see if they can secure a good rate for the year ahead as wholesale energy prices are likely to continue to increase in the coming weeks.

Cambridgeshire
Energy Switch



If you haven't signed up yet to the scheme you are able to access the competitive deals secured through the collective switching by simply signing up via the website Cambridgeshire Energy Switch web link below:

www.cambridgeshire.gov.uk/cambsenergyswitch

Or visit Cambridgeshire County Council's website and click on the Cambridgeshire Energy Switch logo on the front page.

Two energy companies won the 11th October 2016 energy auction. Scottish and Southern Electric (SSE) and Robin Hood Energy can supply a range of contracts to residents. The SSE tariffs are exclusive to residents and are not available direct from the suppliers or via price comparison services. There is to be a new Auction in February 2017

| Type of Contract | Type of billing | Type of Payment | Winning supplier |
|--------------------------|------------------|----------------------|-------------------|
| Dual Fuel online | Online billing | Monthly Direct Debit | SSE |
| Dual Fuel offline | Paper billing | Monthly Direct Debit | SSE |
| Electricity Only online | Online billing | Monthly Direct Debit | SSE |
| Electricity Only offline | Paper billing | Monthly Direct Debit | SSE |
| Dual Fuel | Annual Statement | Pre-payment | Robin Hood Energy |
| Electricity Only | Annual Statement | Pre-payment | Robin Hood Energy |

There is no obligation for people to accept an offer but if you do it's easy and straight forward and the new provider will take care of the whole process.

If you have any issues registering please contact the helpdesk on 0800 048 8285 which is open Mon-Friday 08.30am-5.30pm or contact the Energy Investment Unit at Cambridgeshire County Council on 01223 728552.

Energy Switch Update - from the Haresnape Household

This seems a very good idea - in fact I've just registered with the Council and the next auction is in the 14th February with the winning company being announced at the end of the month, when I

can make a decision if I want to swap my provider or not - no obligation to continue. In the meantime I can look at other providers myself

Don't get scammed!

Every second, fraudsters cost the UK £6,000 – that's £193billion a year. There were 7.5 million fraud and cyber crimes in 2015, compared to six million for every other offence combined.

And it could be the tip of the iceberg as police fear 80% of fraud goes unreported.

Det Chief Supt David Clark, of the National Fraud Intelligence Bureau, says: "These figures should be sending a shudder down people's spines. Fraud needs to be a priority, not just for police, but for every citizen."

An ITV documentary, *Fraud – How They Steal Your ID*, now tells how his officers formed a specialist Dedicated Card and Payment Crime Unit to tackle the conmen.

They spent six months tracking down a man they dubbed "Mr Posh", who phoned banks impersonating everyone from a female pensioner to an Asian businessman in a credit card scam. Lee Chisholm was finally jailed for 30 months after admitting fraud.

But Mr Clark says that by the time conmen like Mr Posh have been convicted, others will have stepped up and taken his place.

So what can you do to make sure you don't become a victim?

Over the next few months Mr Clark reveals the latest scams we should know about – and how to avoid getting caught out...

The eBay vanishing trick

With more and more people chasing after a bargain, fraudsters are tricking us into buying cars that probably don't even exist on sites such as eBay.

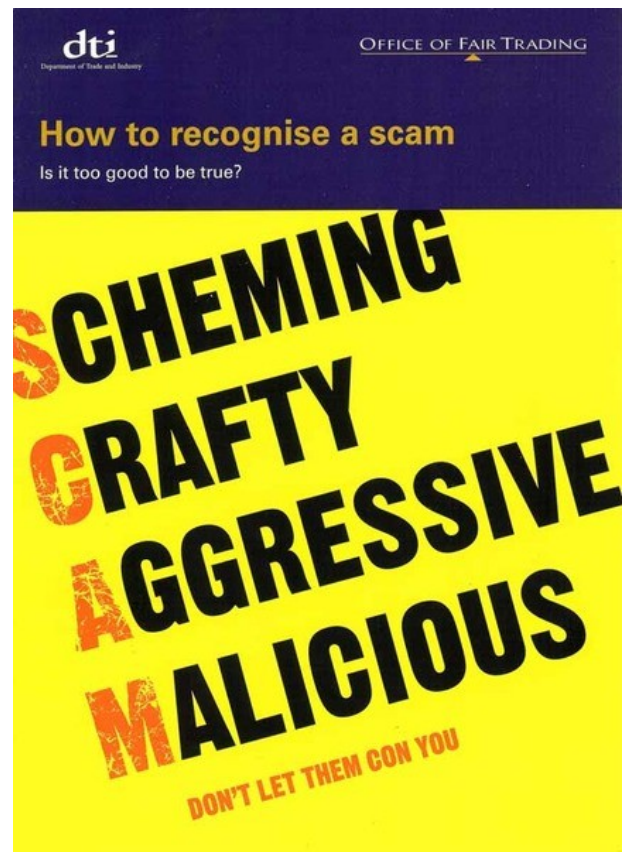
They may advertise as living in one location, but when you contact them they say they have moved as they are relying on you not wanting to travel far to view the car.

Then they get you to hand over a deposit to a third party to secure the deal, but it's actually the fraudster's account. You will never see the car – or your deposit – again.

Protect Yourself: Always see the vehicle before handing over cash.

Never give a deposit and check the person's selling history.

And remember the old adage, if it sounds too good to be true, then it probably is.



The invoice scam

This one is hitting small businesses hard and it only takes a few phone calls from the fraudster thanks to a bit of social engineering.

First, they call up a firm's accounts department claiming to be one of the suppliers and saying they have changed banks.

The next time they call, they speak to a different person, but mention the name of the person they spoke to the previous time to influence them to change more details.

It's only when the real supplier calls to complain their invoice hasn't been paid that they realise they've been scammed.

Protect Yourself: Set up a code word with suppliers that must be used when they make any changes to payment systems.

Reprinted from an article in the Mirror
emma.pietras@mirror.co.uk

One further scam that I had not heard of before was tried on me just now. I got an email telling me that there was an outstanding parking ticket owed by me at The Borough of Barking and Dagenham. There was a link to click to dispute the ticket. If I'd fallen for it I'd have had some evil software downloaded and my computer would have been compromised. I went to the Council's website independently and up popped a warning about this scam and how important it is NOT to click on anything - Paul Haresnape

The Alan Russell Column



Alan had left Townley school and moved on to Wisbech Grammar, so when writing this account he had asked other old pupils for their memories. He said that he was most grateful for their help...

Townley enjoyed several more holidays. In 1950, they went, under the auspices of the Education Travel Association, to Dublin in Ireland and stayed there with about 200 pupils from different schools in the country. From a newspaper cutting from the time - very kindly given to me by Mrs Marjorie Frost nee Morris of March - all departed at 5.30am to catch the 6.53am train to Rugby to join the Irish Mail Train there. "The excitement of the journey and the grand scenery was not so much in evidence this year due to the sojourn to Colwyn Bay last year," it was reported.

The luxurious steamer SS Hibernia carried them on a calm sea to Dun Laoghaire. They were then bussed to their hostels, the boys at Burlington House and the girls at Wesley college. Visits were made to Port Marnock for sea swimming and the famous Phoenix Park Zoo. Saturday was a free day for shopping, the pupils being able to buy couponless chocolates and bananas for the first time.

Sunday was Church Service at the Protestant Church of Ireland or the Centenary Methodist Church, also a visit to the beautiful glen at Glendalough. A glorious walk was taken over the cliff paths to the town of Howth followed by a motor boat trip to the Eye of Ireland. Sea bathing and picnics were enjoyed.

There was a long coach ride on a wet day to Boyne to see monastical landmarks at Tara, the birth places of the Kings of Ireland, and the statue of St Patrick. For many, the highlight was a visit to the Royal Dublin Horse Show with magnificent show jumping horses and exhibits of Irish Industries. The last day was given over to present buying for those with any money left. Most evenings were taken up with socializing, singing, dancing and games, a Townley girl winning the Fancy Dress parade.

Embarkation on Friday on the SS Cambria was delayed due to the rough weather, meaning that the school party did not arrive back at

Peterborough until 10.30pm, getting home to Christchurch at midnight. A newspaper report at the time showed that the community spirit was alive and well in those days.

"The self sacrifice of the parents and their trust in the Headmaster and Staff have given the children most excellent holidays and eye openers. The whole journeys would not have been successful without the help of those who so freely and ungrudgingly lent their cars at the early and late hours of August 2nd and 11th.

This had been a creditable and very

commendable effort on the part of the school and the efficiency of the staff is clearly shown when such a co-operative efforts are undertaken.

It is the intention of the headmaster to take a shorter tour next summer (1951) and a longer one in 1952." Wisbech Advertiser

To be continued



L&NWSS Hibernia leaves Dublin for Holyhead

AQUA & FLAME

Gas Safe Registered

CSCS Registered

All Plumbing and Heating work undertaken

Alan Curtis
64 Church Road
Christchurch
PE14 9PQ

Home 01354 638733

Mob 07976205695

All tiling including floors

Underfloor heating

All Electrics

All Plumbing

All work carried out by
certified installers

Free estimates and design consultation

Step up Dog Owners! - or the rest of us Step in!- Paul Haresnape

After quite a few months where the streets, tracks and drives seem to have been a 'cleaner' place. I'm sorry to report a descent to the bad old days where dog poo lurked awaiting the unwary passer by.

To be fair, in my experience, apart from Crown Road, from Christchurch cottage to past the school, which has got bad again, much of the complaint is more about the tracks and drives than the roads and pavements. It does seem likely to me that dog owners, and walkers seem to think that when the tarmac runs out, so does the need to pick up after the pooch! They seem to think that if they let their little darling poo on the verge, it will be OK as it will 'biodegrade'. Not so though, most of us walkers at this time of year try to keep to the grassed areas, principally the verges, particularly if the main track or drive area is somewhat muddy, as it invariably is in the winter. So we avoid the mud but walk the poo home. THANKS DOG OWNERS!

It has also been noted in the past that some dog owners bag up their pooch's poo but then leave the bag in exactly the same place as the poo was originally! Another trick seems to be to hang bags

of dog poo in the nearest tree! So far the record is three months!

The Dog-Poo Team will be carrying out another 'spray-day' within the next month or so. Guilty parties WILL be named and shamed! -Ed'.



P R PARKER

Established 1978

General Building and Maintenance

CARPENTRY
PLUMBING
PLASTERING
BRICKLAYING
ROOFING

REFURBISHMENT
AND
RENOVATION

01354 638380

GLAZING
PAINTING
DECORATING
RENDERING
GUTTERING

FREE ESTIMATES

All Types - Houses - Flats - Shops - Offices



March Stationery & Print

Booklet Printing
Business Cards
Digital Photos
Leaflets
Newsletters
Banners

01354 656614

sales@marchsp.co.uk

5 Fenland Walk, March, PE15 8TW

Butterfly Quiz.

Thanks to John
Murray for these
lepidopterist
teasers

1. High ranking Russian Naval Officer
2. Punctuation Mark
3. Proud and vain as a
4. Bleached large Vegetable
5. Collector of Tolls
6. Hard scaly armour for small reptile
7. Fish found in fast flowing waters
8. Once found on a hill in Christchurch
9. One Penny
10. Top fashion model from a London Borough
11. Timber with Woodworm
12. Old bearded trawler Captain
13. Julius Caesar was one
14. An American King ?
15. Parisian Street Walker
16. Almost a store in the Highlands?.
17. Favourite football strip colour
18. Wild open space countryside
19. Was once a fashionable hair style
20. Usual colour for the tub.

Answers page 25



MOBILE CATERING

***For freshly cooked fish & chips,
sausages, chicken and pies
every Friday at the Dun Cow
from 5.00 'til 8.00 pm***

**For enquiries/quotations call:
07756 170 700**

**We also cater for private parties,
functions, charity events**



Fly-tipping on our doorsteps! - Paul Haresnape

Another irksome and rather disgusting development which is probably nothing to do with the village residents, other than it spoiling what little beauty we have in our local countryside. Those of us who walk the walks round and about the village will have noticed the blight of the fly-tipper again. What appalling creatures these folk must be! We all have junk that we need to dispose of, but what sort of twisted mind thinks, "I know, there's a bit of countryside just outside that village, I'll go and dump my junk there"?

Well it's happened again, Green Lane drove has been hit again, probably three times in the last three weeks. I know Roger Gladwin has reported the offence and some of the piles have been taken, but the District Council Clean up team left at least one lot, and since then more has arrived. Looking at the items left it seems to me that it's been a business which has been clearing out old equipment and stores, possibly a car washing firm, possibly a Garden Nursery, or maybe even a farm machinery workshop. Could it really be a farm business would do such a thing? I can't really believe it.

At the Parish Council meeting in January we were told that we could report these incidents ourselves, directly to the Fenland District Council, but I rather think these instances should be treated as criminal events, to be investigated and solved and retribution delivered, rather than a municipal matter, just to be dealt with by the cleanup team.

STOP PRESS - at their 19th January meeting, Fenland District Council has decided to double the fine for those caught Fly tipping to £400!



Outwell Timber

For all your Timber and Building Supplies

ISLE ROAD, OUTWELL
PE14 8TD

Tel: 01945 77 21 16

FENCING, PANELS, TRELLIS
TIMBER, PLYWOOD, DECKING

SAND, BALLAST, GRAVEL

SCREWS, NAILS, BOLTS

PAINT, SILICONE, HAND TOOLS

LOCKS, ELECTRICALS, PLUMBING,
GUTTERING

UNDERGROUND PIPE & FITTINGS

CEMENT, MULTIFINISH, PLASTERBOARD

Paddock & Field Services

Equestrian and Small Acreage Specialist

Andy Jackson

Orchard Barn
Flint House Rd
Lotts Bridge
PE14 9JN

07801 108 555



andy@paddockandfieldservices.co.uk
paddockandfieldservices.co.uk

TOPPING, HEDGE & VERGE CUTTING,
HARROWING & ROLLING,
SPRAYING, BALING,
MACHINERY RENOVATION & REPAIRS



TOWNLEY SCHOOL AND PRE-SCHOOL

Christchurch, Wisbech, Cambs. PE14 9NA

Email: office@townley.cambs.sch.uk

Website: www.townleyschool.org.uk

Well done to Team Townley who took part in the 5-a-side interschool challenge!



Little Princess Trust

Olivia has had her hair cut for the Little Princess Trust, who make wigs for children who have lost their hair because they have had chemotherapy due to cancer.



The whole school took part in lots of Christmas activities, including Christmas dinner and a visit from Santa! Thanks to everyone who helped out.



Provisional Diary Dates

Safer Internet Day - 7th Feb

Half Term 13th - 17th Feb

Back to School - 20 Feb

World Book Day, children can dress up as their favourite book character - 2nd March

Bikeability Week - 6th March

Parish Council snippets

Street lights

Street lights dominated the first part of the January meeting. The Council needs to engage a contractor to undertake work on some of our lights, but there are only two companies who could do it and neither are being helpful. The contractor the District Council is using is Balfour Beatty, and they cannot discuss our needs until after February due to a lack of staff.

Dementia Awareness Raising

There is to be a talk to raise the awareness of Dementia, and how we in the village can be prepared to deal with sufferers, in the most appropriate way. This is to be prior to the Annual Meeting in May. Further details will be publicised before hand.

Gritting Volunteers Needed

The new arrangements for gritting the streets and pavements were discussed. Cambs County Council had reviewed the routes for the Gritting lorries as a result of the financial squeeze and will no longer be sending the Gritter into the village. However they had offered to put Grit bunkers in the village for trained volunteers to apply grit where and when required. Volunteers were being sought by Cllr James Hughes, questions arose over liability if accidents occurred after application. Cllr Hughes stated that the County would indemnify any of their 'trained' volunteers. To date there has been no enthusiasm to volunteer.

Bus Shelter Review

The Bus Shelter was the subject raised several times in the meeting, firstly amongst the Councillors, where clarification was sought from Cllr Sutton on the subject of demolishing the redundant and rather ugly structure. There was no need for planning permission to do this. There had been two parents who had responded to the request for interest in keeping it, saying that it was used by some children awaiting the school bus, when it was raining. The Heron representative reported that there had been no support for retaining it sent to the magazine, in fact one creative solution was proposed for its demolition.

The subject returned later in the meeting at Public time when the same issues were revisited. There was a suggestion that the youth of the

village might like to 'paint murals' on it and the Garden Club might like to hide it behind some foliage! Cllr Russell, made the observation that he had seen Doris (Ted) Rolfe sitting outside in the rain waiting for the Post Office van, and wouldn't it be sensible to have it park outside Christchurch Cottage, where the shelter could be used. A question was asked if anyone at the meeting used the Post Office? Your reporter was the only one and was asked to enquire of the Post Office if there was any good reason why they might not move their location to there?

County and District Councillors

The County Councillor Yeulett reported that there would be a Mayoral election in May where we will be asked to choose a Mayor for Cambridgeshire and Peterborough.

Barriers on the Sixteen Foot Bank Road had been investigated by running some stress tests. However there seems to be some reluctance amongst the Officers of the Fenland District Council. The Parish Council will need to find out what the concerns are as it was thought to be a worthwhile scheme. Fenland Councillor Sutton offered to find out.

Townley School has applied for permission to demolish the old Hawser building currently being used as a Dining Hall and build a new one, at the same time expanding the car parking at the school. There were no objections from the Parish Council.

Next Year's budget

The Council had been budget setting and concluded that there would be a need to raise the Council Tax Precept by £1200, which, if there are 350 households in the parish, would be about £3.40 per household increase for the year

Public Time - Bus shelter again & fly tipping

The Bus Shelter was again discussed, one member of the public volubly supporting the retention, but several vehemently against, even suggesting a new modern one, sited in a more 'sensible' position at the end of Fen View, paid for by public subscription. Some Councillors were most concerned about the cost of demolition, but one offered to start a fund to have it removed. Concerns about the increase in fly tipping, difficulty in getting it removed and the lack of action to track down the perpetrators was raised. The Clerk said it was easy to report directly and offered to provide the link fenland.gov.uk/article/11294/Clean-streets

The Joan Smith Column

Joan continues her story about working for Mrs and Mrs Anderson



Arriving at work the next day I wondered who might be the new employee put to work the print machine, my boss and his wife greeted me as usual and said they would introduce me. I was asked to go with them to the outside building and had a shock when the door was opened to let me in. "Hello Trevor!" I exclaimed. My boss said "Oh! Do you know each other?" We both said "Yes!" in unison. We were both Upwellians; Trevor going to the Grammar School in Wisbech, whilst I was still at Upwell.

Having exchanged a few pleasantries, I had gone back into the house to carry out my chores as usual. When it was coffee time Mr A took his and Trevor's drinks over to the 'Press Room' as Mr A had christened it. Mrs A and I had ours in the kitchen. At lunch time Trevor said, if it was ok, he was happy to have his sandwiches in the 'press room'. So I said, I'd bring our teas over with my sandwiches so that we could have a bit of a catch up together; like where he was living etc. Guess I was just being nosey really.

Trevor had married and now had three sons and was living in Leverington. He mentioned that Dr A had asked him to give his notice in to the Wisbech printers where he had been working, and not to say where he was going. I said "Why do you call him Dr A? I call him Mr." "Well he has always been known as Dr A when he's asked The Wisbech Printers to do the manuscripts he used to leave."

After my little catch up with Trevor I went back in doors and carried on my chores in the usual way. Dr A went out to Trevor to explain and work with him on the printing machine. A little later I had to go out and tell Dr A that he was wanted on the phone. Mrs A had gone into Kings Lynn shopping. Dr A had gone into his study to take the phone call and on his way out he called to me "Oh Joan? I am Dr A not Mr!" "OK! Sorry! You should have told me when I first came!" I replied. "Yes I should have," he remarked.

When Mrs A came home we put the kettle on and later I took out the teas to Dr A and Trevor who were still working in the 'Press Room'. By then it was about 4oclock. I normally left at 5 so when home time came I said my cherrios to everyone, wondering what the next day would bring, and if would I learn anymore of the inner goings on in the 'Press Room'?

URGENT ACTION REQUIRED

Fenland District Council sent the following appeal for YOUR views, we got this too late to go into January's Heron - you only have until 7th February to make your views known - Ed'.

Following approval from Cabinet, the annual draft Business Plan and Budget consultation launched today. This allows residents to provide feedback which will help us shape our Corporate Priorities.

This year, we are asking residents how important services are personally to them. We are also asking a number of open-ended questions, including:

- ♦ "Do you think we are focusing on the most important areas?"
- ♦ "How could we deliver the above priorities more effectively?"
- ♦ "Are there any areas that we perform particularly well in, or could be improved?"

The questionnaire is available online at www.fenland.gov.uk/yourviews2017. Paper copies are also available in our Shops and Hubs, Leisure Centres, Business Centres, Business Reception, Community House and at the Oasis and Rosmini Centres.

The questionnaire is available to complete until 7th February. If you have any questions please do not hesitate to contact us.

URGENT ACTION REQUIRED



DODDINGTON

**MONDAYS 9:30 AM, 3:30 PM, 5:30 PM
+ 7:30 PM**

**DODDINGTON VILLAGE HALL,
BENWICK ROAD**

TEL: DIANE 07707 547604

WWW.SLIMMINGWORLD.COM/

SLIMWITHDYNAMICDI

OPEN BANK HOLIDAY MONDAYS

for this tasty breakfast recipe visit
slimmingworld.co.uk

0344 897 8000



*More people in the UK choose to attend a Slimming World group each week than any other weight loss group.

Slimming
WORLD

touching hearts, changing lives



S & H Painters and Decorators

Tel : 01354 638124

Mob: 07905145680

Steven Horne

Christchurch, Cambridgeshire



CHRISTCHURCH ELECTRICAL



Simon Freeland Hill Farm 3 Church Road Christchurch PE14 9PQ

Tel: 01354 638802

Mobile: 07727 046439

- All domestic electrical installation work undertaken.
- No job is too small (Min ½ Hour Charge).
- Free quotations / estimates.
- Very reasonable rates with no VAT.
- References available throughout the parish.
- Part P Registered - Fully Insured - Government Approved.
- Six Year Warranty Offered.

ELECSA
Part of the ECA Group

www.elecsa.co.uk

www.trustmark.org.uk

Electrical Safety Register

incorporating

ELECSA

www.electricalsafetyregister.com

Hearing from young people



In November, we visited The Voyager Academy in Peterborough where we heard from more than 130 young people who shared their understanding of mental well-being and how they would like to get mental health support.

This is part of a project we are working on with Healthwatch Peterborough, to help our local commissioners understand how young people think about mental health and would like to

receive services. It follows on from the 'Thriving' report we published last year, where young people told us they wanted mental health support that is meaningful and relevant to them.

We are currently talking to six other schools in Peterborough and Wisbech about running similar workshops with them. As part of this project, we are also visiting several different groups and talking to young people in Cambridgeshire and Peterborough who may find it harder to share their experiences, for example young offenders.

To encourage young people to talk more about their experiences, we have designed 'Your mental well-being survey'. The survey asks young people about their experiences as well as how they access mental health services. Please help us promote this survey to young people you know or work with. - Online Heron readers can click the link below -Ed'.

www.healthwatchcambridgeshire.co.uk/your-mental-wellbeing



Shaun Ginley Asset and Legacy Protection

SAVINGS

There are alternatives to low Building Society Rates



We can introduce you to companies that can help protect the value of YOUR savings

- Interest Rates up to 12%
- Money tied up for ONLY 1 Year
- Income paid MONTHLY
- MINIMUM INVESTMENT FROM ONLY £5,000

 **07712 659292**

 **shaun.ginley@btinternet.com**

Home Protection • Trusts • Wills

A.R. CLINGO

FUNERAL DIRECTOR

Family Independant
Business

Private Chapel of Rest
Personal Attention

24 Hour Service

Full estimates given at all times

Golden Charter
Funeral Plans



Pinfold House
St. Peter's Road
Upwell, Wisbech
Phone 01945 772502

Maximise the enjoyment of
your home
with the professional help of

Brimstone

Garden Design Services

in association with

SFC Services

Design Development Maintenance
Hard and Soft Landscaping
Household Repairs and Building Maintenance

for free estimates, contact either

Cliff 01354 638217 or 078 080 78518
cliff@brimstonegardendesign.com

or

Steve 01354 638964 or 07725 866445
sfclifford67@gmail.com

L.W Vehicle Services
Car & Commercial repairs



Est 2003

- ~ Electrical and Mechanical Diagnostics and Repairs
- ~ MOT Preparation & Testing
- ~ Servicing and Inspections
- ~ On Site Service
- ~ Breakdown / Recovery Service
- ~ Van and Car Sales

Contact Lee on 07717 738796 Or Tel 01354 610172
March Road, Welney



BUILDING

DECONSTRUCTION

Buildings bought and all materials recycled/
upcycled

Pre 1930s preferred
but all buildings considered
from barns to cottages
including site clearance

FREE QUOTATIONS GIVEN

We have a large number of salvaged
ARCHITECTURAL ITEMS FOR SALE
Bricks & other building materials,
roof trusses etc.

Firewood, plants, and hanging baskets
COME IN AND SEE US
AND HAVE A BROWSE!

Call Matt or Sarah Lawrence on
Tel: 01354 638977 or, Mobile: 07856 291787
Toll Farm, Ha-Penny Toll Road,
Three Holes, Norfolk,
PE14 9LJ
Email: buildingdeconstruction@yahoo.com

Small Personal Ads

For Sale or
Wanted

Now just 10p per word. Photos extra

FOR SALE Young Chickens



Point of Lay clutch
cockerel
(black markings)
and three hens
All Magpie x Suffolk
hybrids
(Large dark bird is
mum - not for sale)
£50 the lot
Call to view
01354 638990

FOR SALE
X Hose Expandable
Hose. Never kinks or
twists or tangles.
Super lightweight.
Hardly used
Very Good Condition
Price New (Argos):
£49.99 Hose
£9.99 Holder
£9.99 Spraygun
£69.97

Only £40
Tel 01354 638339

GROWING OLD IS...

- ♦ when going bra-less pulls all the wrinkles out of your face
- ♦ when an 'all-nighter' means not getting up to pee
- ♦ when 'getting a little action' means that you don't need to eat any fibre
- ♦ when you are told to slow down by the doctor rather than the police!
- ♦ when your friends compliment you on your new alligator shoes and you're barefoot!

And Finally...

Next month we will be featuring one of Richard Hughes' famous recipes. Don't forget to come along to the W.I's special Open Meeting next month on the 14th March at the Community Centre in its new kitchen! Wonder what he'll think of it? No doubt he'll give it the once over eh?

Talking cheffy stuff and how they dress things up!.....



"But this can't be what I ordered ...
I know I ordered something I like."

Speaking of food, I'm reminded of an occasion when I went into my local Dewhursts butchers and a 'Saturday boy' was putting out prepared packs of chicken legs dusted with one of those prepared spice powder mixes. The label read "Sweat & Sour". I pointed out to the butcher "I don't think you'll be selling many of these!" He looked at the label and playfully slapped the lad round the head, knocking off his butchers hat saying "Go and do them all again! You silly twit!"

It seems like we've missed out on that snow we were promised – so far! Did spot a few flakes in the air today though! But the temperature!! Brrrrr! Just purchase a couple of huge bags of apple logs from Outwell. My lounge smells wonderful this evening!

Who knows what February may bring?
Enjoy, 'till next month – Ed'.



"Eat less and exercise more? That's the
most ridiculous fad diet I've heard of yet!"

Quiz - The Answers

1. Red Admiral
2. Comma
3. Peacock
4. Cabbage White
5. Gatekeeper
6. Tortoiseshell
7. Grayling
8. Brimstone
9. Small Copper
10. Camberwell Beauty
11. Speckled Wood
12. Crizzled Skipper
13. Purple Emperor
14. Monarch
15. Painted Lady
16. Scotch Argus
17. Common Blue
18. Large Heath
19. Ringlet
20. Bath White

Useful Telephone Numbers

| | |
|--|-------------------|
| Age UK Cambridgeshire | 0300 6669860 |
| Alzheimer's Society (Fenland) | 01945 580480 |
| Anglian Water – Susan Bull | 08457 145 145 101 |
| Christchurch Resident's Association | 01354 638990 |
| Churchwarden - Mrs. D. Symons | 01354 638352 |
| Citizens' Advice Bureau, Wisbech | 01945 464367 |
| Community Car Scheme (to book a journey) | 07902 316360 |
| Community Centre bookings | 01354 638478 |
| Community Fire Safety Officer | 07717858166 |
| County Councillor - Fred Yeulett | 01354 653763 |
| District Councillor - Will Sutton | 01354 638025 |
| District Councillor - Michelle Tanfield | 07908 707129 |
| Electricity Faults - UK Power Networks | 105 |
| FACT | 01354 661234 |
| Fenland District Council | 01354 654321 |
| Floodline | 0845 988 1188 |
| Library - March | 0354 0455225 |
| National Debtline | 0808 808 4000 |
| Norfolk Dial-a-Ride | 01553 770310 |
| Parish Clerk - Jane Rees | 01354 638131 |
| Parish Councillor - Jill Bliss | 01354 638343 |
| Parish Councillor - William Beswick | 01354 638758 |
| Parish Councillor - Roger Gladwin | 01354 638538 |
| Parish Councillor - Geoff Harper | 01354 638681 |
| Parish Councillor - James Hughes | 01354 638310 |
| Parish Councillor - Peter Owen (Chair) | 01354 638847 |
| Parish Councillor - Nigel Russell | 01354 638279 |
| Police - PCSO Sue Clarke | 07738025220 |
| Police - Emergency | 999 |
| Police - Non Emergency | 101 |
| Telephone Complaints | 0345 145000 |
| Townley School | 01354 638229 |
| Trading Standards | 845040506 |
| Train Information | 08457 484950 |
| Upwell Health Centre (and out of hours) | 01945 773671 |
| Upwell Health Centre - Pharmacy | 01945 774934 |
| Vicars - Ian & Lynda Brady | 01354 740627 |
| Water Emergencies | 08457 145145 |
| Club Contacts | |
| Art Club - Jan Clifford | 01354 638217 |
| Book Club - Sheila Day | 07946 635908 |
| Craft Club - Wendy Yates | 01354 638448 |
| Garden Club - Marion Hawthorne | 01354 638230 |
| Short Mat Bowls Club - Wendy | 01945 772737 |
| WI - Peggy Warby | 01354 638339 |

Web links in the Heron are active when viewed in our online version www.theheron.info



A First Varsity

- Steve Drawbridge

Part 1 of 3

1872 was the first time, when it all began, and today 135 years later it's my first time.

It was the 8th December 2016 and I was waiting for the alarm to go off at 5:30am. It's not the ideal way to start what is bound to be my longest Rugby day but wearily and full of trepidation I set off to Twickenham for one of the highlights of my Rugby career and possibly the culmination of a journey that's been nearly fifty years in the making and has spanned a large part of the rugby globe.

Today is the 135th annual Rugby Union Varsity Match between Cambridge University and the other lot; also known as Oxford University; and it is also my first live match commentary for BBC Radio Cambridgeshire.

Twickenham, the home of Rugby Union, is the venue for this momentous occasion as it has been since 1921. Does it get any better for a rookie pundit? So, off to Cambridge to meet up with the rest of the commentary team at the BBC Studios in the Cambridge Business Park.

Today we are led by Steve "Jacko" Jackson, sports broadcaster and journalist, and I shall be mentored by Mark "Jonno" Johnson, football commentator at Cambridge United and Andy "Abbo" Abbot, Cricket and Horse Racing. I'm told my role is as Rugby expert and Pundit! There are those who may question the former and I may agree with them over beer after the game, sometimes, but not today, today is my day!

I should add that Jonno was at a trophy game in Bradford commentating the night before and had not arrived home until one thirty this morning so was making me feel positively wide awake and bushy tailed, it could not last, and yes, I dozed the last few miles through West London.

Arrival at Twickers and entrance smoothly into the media car park with passes waiting for us fifty yards from the stadium, wow I could get used to this, far from the madding crowds at Richmond or Twickenham station and the long walk up Rugby Road. The media accreditation



Continued next page

carefully applied for three weeks earlier, and only accepted seven days ago, was waiting for me at the press office along with a pass and media pack; yes this really was going to happen we're in! Well not quite, security still to go and would they find the hip flask? Phew final hurdle passed and off to the media



Commentators on the Gantry with Steve fourth from left

gantry to set up, finding ports, ISDN lines and places to plug headphones into along with the famous BBC microphones that I had so often seen my broadcasting hero "Bill McLaren" using and soon Jacko was testing the connection to the studio and pronouncing us ready to roll. Next stop the "Alastair Hignell" room which although grandly named after a great English full back was in reality the media canteen and venue for non stop coffee, hot soup and sandwiches on tap all day for us hard working Hacks, yep definitely getting used to this.

A word on Alistair Hignell CBE, born in Ely and one of a few double blues at rugby and cricket for Cambridge University. England rugby international, 14 caps, played rugby for Bristol and cricket for Gloucestershire in the late 70s and early 80s. He became a respected journalist working for BBC radio until diagnosed with MS in the late nineties and finally had to retire in 2008 when he won the Helen Rollerson award at the BBC Sports Personality of the Year for his work in raising awareness of MS. A rare sportsman, in fact 'great' springs to mind and a son of Cambridgeshire.

So having left his canteen we got settled back at the gantry ready for the first match of the day which in case I hadn't mentioned was to be the women's rugby union varsity match and kicked off at 1130am.

We would not be doing live commentary on this match but a summary for the sports bulletin and a live interview with the light blues captain, Cambridge play in light blue and Oxford "the other lot" in dark blue.

The woman's varsity match has been contested now for 30 years but this will be the precursor to the men's match at Twickenham for only the second time.

For those that watched and enjoyed the Olympics Woman's and Girls rugby is one of the fastest

growing team sports in the UK and in Cambridgeshire is vibrant and well represented with 5 girls having gained England honours at different age grades and rugby disciplines. So this was expected to be a cracking match and very keenly contested with Oxford desperate to halt a losing streak. With great anticipation

and a rising sense that this was going to be great way to start a winning Varsity Day for Cambridge the game kicked off and we settled down and waited for the first light blue score, and waited, and then waited some more. Hmm! This wasn't in the script not only was the Oxford defence holding up but Cambridge were showing very little ambition or flair in attack and Oxford were forcing the Cambridge team into uncharacteristic mistakes. Sure enough as we approach half time the pressure Oxford are putting our girls under finally tells and the mounting toll of individual errors results in a kickable penalty and to huge outpouring of relief from the dark blues. They break their duck and go into the break three nil up.

The error count from both sides decreased and the quality of the game ramped up but with the tension increasing and despite continued attacks being launched from our girls all across the pitch they cannot breach the dark blue line. Oxford have the belief, they are trusting their magnificent defence to stem this continued tide of light blue and are now looking to counter attack. Wow! Nobody saw this coming!

We move into the last ten minutes and yet another attack from our girls flows across the pitch and brings the two stand out players from each side into direct combat. The Cambridge captain goes for the line at full pace two metres out and from nowhere the dark blue full back puts in the hit of the match and takes them both into touch, line out Oxford, pressure relieved and the moment Cambridge lost the match.

The final moments being played out reflected the game, Cambridge striving, Oxford composed in defence and there it was a major upset to start the day. A euphoric Oxford team deserved the victory nobody saw coming. To turn a losing streak which in the last 3 games they had not scored a point against Cambridge. To have the self belief to win this game was a great achievement.



HeronSport

We have featured AFC Christchurch on the back page of the Heron for several months - we are pleased to do it. Thanks also to Steve Strawbridge - Rugby Union pundit for raising that sport's profile, but where are the other sports played here? If we get no news - we can't share it with the village!



AFC Christchurch enter the second half of the season having done better than may have been expected, despite having only been recently re-established. Recent results have been a bit disappointing, but play has been good and the team displays a good spirit.

Following a reverse at Needingworth, the first home match following the Christmas break was called off as Wicken were unable to field a team. The points were awarded to AFC. Thanks to Yvonne Chenery for the call advising of the abandonment - you don't get that from a Premier League Club - calling off the crowd!

In the home match following, Marchester United came back from an early AFC goal, to take the points, playing on the break against good Christchurch pressure. Again rather disappointing!

Football Results

Mead Plant & Grab 5B League

Needingworth U Res 5 1 AFC Christchurch
AFC Christchurch Home win Wicken (cried off)
AFC Christchurch 2 1 Marchester Utd

Mead Plant & Grab 5B League Table at 24/1/17

| Pos | | P | W | D | L | GD | PTS |
|-----|------------------------------|----|----|---|----|-----|-----|
| 1 | Houghton & Wyton Reserves | 12 | 10 | 1 | 1 | 39 | 31 |
| 2 | Needingworth United Reserves | 15 | 10 | 0 | 5 | 26 | 30 |
| 3 | Outwell Swifts Reserves | 12 | 9 | 1 | 2 | 25 | 28 |
| 4 | Huntingdon United Reserves | 12 | 9 | 0 | 3 | 32 | 27 |
| 5 | Coldham United Reserves | 15 | 7 | 2 | 6 | 10 | 23 |
| 6 | AFC Christchurch | 15 | 7 | 1 | 7 | -5 | 22 |
| 7 | Fenstanton Reserves | 14 | 6 | 1 | 7 | 2 | 19 |
| 8 | Marchester United | 13 | 6 | 1 | 6 | -15 | 19 |
| 9 | Wicken | 13 | 5 | 2 | 6 | 5 | 17 |
| 10 | Cottenham United A | 14 | 3 | 0 | 11 | -19 | 9 |
| 11 | Benwick Athletic Reserves | 13 | 2 | 2 | 9 | -45 | 8 |
| 12 | Chatteris Town B | 14 | 1 | 1 | 12 | -55 | 4 |

Football Fixtures (home team first)

Mead Plant & Grab 5B League

4 Feb 2pm Cottenham Utd AFC

18 Feb 2pm AFC v Outwell Swifts Res

25 Feb 2pm AFC v Needingworth Utd Res

Reg Haig & Arthur Peck Cup

11 Feb 1:45pm Histon Hornets Res v AFC

Any views expressed in The Heron do not necessarily reflect the views of
The Heron Editorial Team.

The team aim to provide a balanced view of village opinions where such views are expressed.
We reserve the right to edit any submissions where we feel this is appropriate.