

The Heron

Community Magazine

February 2019

Delivered to homes in Christchurch, Euximoor and Tipps End - £1 where sold

No. 58

In this issue!

Fens Educ. Opportunity	2
Community Info	3
Editorial	3
Diary Dates	4
Church Services	4
Letters to the Editor	5
NHS CCG	6
Arts - Welle Cinema	7
Arts - Jazz Club	7
Clubs Pages	10 & 11
Youth Page	12
CFRS	14
Rainbows, Brownies, +	15
Lunch Break	15
PC Snippets	16
CALM	17
Chapters to be Closed	20
Church Mouse	20
Townley Page	21
Newbie Blog	24
Vet's View	24
Obituaries	25
Useful Numbers	26
And Finally	26
Poultry Page - Al	27
Pooch Page - Hols.	28

SUCCESS! We've Secured Funding from the Parish Council 'till 2020!

A BIG THANK YOU!

To all our loyal supporters who have played their part!

It's YOUR magazine after all!

Well done ALL including The Heron Team!

Editorial Team:

Richard Guilford – Editor

Linda Webster – Treasurer & Ad. Manager

Support - Hazel Crawford, Derek Randall-Hall, Lewis Bennett, Annie Nason, Sandra Kay & Team

Website:

www.theheron.info

Enquiries:

editor@theheron.info / 01354 638990

adverts@theheron.info / 01354 638124



Fenland

An Opportunity Area in Education

by Steve Barclay



At the end of last year, Fenland and East Cambridgeshire was selected as one of just twelve areas in the country to be designated as an "Opportunity Area" bringing the area an extra £6 million of funding. Additionally, our schools have been granted priority access to other Department of Education funding, which is a game changing opportunity for education in our area and will accelerate the progress of children and young people in Fenland and East Cambridgeshire.

The Department for Education's Opportunity Area Programme Board recently announced that they aim to ensure that the percentage of children eligible for free school meals and achieving at least the expected standard in reading and speaking Early Years Foundation will exceed the national average by 2021.

They also aim to halve the attainment

gap between disadvantaged pupils and all pupils at KS2 and for the attainment of all KS2 pupils in reading to be in the top half of all local authority districts in England.

To reach these ambitious and necessary goals the Department for Education will receive applications from all primary schools to apply for up to £25,000 to deliver small-scale improvements targeted at raising the attainment of pupils. Teachers will be able to access free training in phonics and reading and early years professionals will also have access to training in early speech, language and reading. Moreover, to help improve concentration in schools, at least five new breakfast clubs will be opening this September.

This is good news which will ensure that all of our local children will have access to quality education which will unlock their boundless potential.



Earlier this month, I met with a number of local headteachers to discuss how we make the most of the Opportunity Area Programme and to hear more about how I can support local teachers.

To find out more about my work in Parliament and my campaigns locally, or to let me know your views, please visit my website:

www.stevebarclay.net

Alternatively, you can follow me on

twitter: **@stevebarclaymp**

facebook: **/stevebarclaymp**

instagram: **@stevebarclaymp**

Community Information

Mobile Library: First Tuesday each month - in the lay-by Upwell Road - 12:15 - 12:45pm. Forthcoming dates are: Feb 5th, Mar 5th, April 2nd, May 7th, and so on.

Mobile Post Office:

Visits Mon to Thu in the lay-by Upwell Road.
Monday and Thursday - 16.10 to 17:00pm
Tuesday and Wednesday - 16.10 to 17:00pm
Fridays - no service

Community Car Scheme: This scheme now has two drivers living in the village. It can be used by anyone who either do not have their own transport or who would like someone to take them for medical, social journeys, or shopping. Transport is door to door and passengers make a contribution to the cost. For more info or to book a journey call Angie 01354 638721.

Delicious Fish and Chips are available outside the Dun Cow from Michael and Michelle's van on Fridays 5.00pm to 8.00pm

Health & Wellbeing Strategy Update: Tackling Fuel Poverty - This is a new project for Fenland which will run over three winters starting in January 2019. If you have any queries about this project please contact Isabel Edgington on 01354 602167, iedgington@fenland.gov.uk, or Annabel Tighe on 01354 622497, atighe@fenland.gov.uk

In September 2018 FDC collaborated with an environmental charity, Peterborough Environment City Trust, to offer up to 400 households a FREE energy advice service for this winter, and the following two winters. The charity is able to access funding specifically for Fenland residents, the aim of this work being to improve housing warmth, save residents money on their energy bills, and to address fuel poverty within Fenland. This service is available to all Fenland residents, however, the project aims to reach, primarily, those most in need.

FDC has identified target areas within the district where the highest proportion of residents with a low income and high energy costs reside. These areas are within the following wards:

Roman Bank
Parson's Drove & Wisbech St. Mary
Octavia Hill
Medworth
Manea
Christchurch & Elm
Clarkson

(continued on page 5 column 2)

School Defibrillator location is on the wall of the dining hall in Townley School grounds. Access via carpark, via Greenways off Crown Road.

Dole Donations - The Community Centre Committee would like to thank all those kind Christchurch residents who donated their recent dole payments towards the running of the Community Centre. This was very much appreciated and will be for the benefit of all villagers.

TOOL FAIR - at Three Holes Village Hall on Saturday 6th April

If you would like information about booking a stand as an exhibitor please contact Geoff Fox-Noble mob: 07969 336107 or email: king-of-clubs@sky.com or see www.threeholesvillagehall00.org.uk

EDITORIAL

Well!...We weathered the storm as you will gather from the cover, Letters p5, and PC Snippets on p16., and whilst it is obviously wonderful that the PC have managed to reduce the village 'precept' by over 10% for 2019, it does make one wonder what all the fuss was about in the first place!?

There is some talk of the PC entering into a 'contract' with The Heron whereby if we broke their 'rules' we could lose a month or more's funding. To me this reeks of 'Big Brother is watching you!' and we would not be in agreement with this! Whatever happened to 'the freedom of the press' and all that? Ho Hum!

It seems ironic that the ONE person in the whole village that stirred up trouble last year is now attempting to dictate policy to the PC. This is hardly democratic, and certainly not representative of the village as a whole. For goodness sake let's lay this old chestnut to rest, move on, and not become over zealous!

On to more important matters. Hopefully we have filled this months Heron, not only with all the usual features, but also, with some useful and interesting articles for your perusal.

As always we'd love to hear from any of our readers re comments, both positive and negative, on how we are doing, with any interesting articles, or topics you'd like us to look into.

Remember your photos of any new births, or pets, etc. would also be most welcome!

Enjoy! 'Till next time!

 3

DIARY DATES

Abbreviations for commonly used venues:

TS = Townley School, CCC = Christchurch Community Centre, (new Hall)

TH = Three Holes Village Hall, UH = Upwell Village Hall, WH = Welney Village Hall

Weekly events

Mondays Pop-Up Coffee Shop - 9.00-11.30am - CCC

Pilates - each Monday - 6.30-7.30pm - CCC

Wednesdays Forever Active - "Strength and Balance" - 9.30 to 10.30am - FIRST CLASS FREE- CCC

Wednesdays Rainbows & Brownies & Guides- 5-15pm onwards - CCC

Fridays "Coffee, Cake, and Chat" - 2.00 - 3.00pm - Parish Church - ALL WELCOME

Fish and Chip Van visits - outside Dun Cow - 5.00 - 8.00pm

General events

Feb 5th Mobile Library visits in lay-by on Upwell Road - 12.15pm till 12.45pm

Feb 5th Craft Club - Bookmarks with Jane Rees - 7.00pm CCC

Feb 10th Welle Cinema - "The Golden Years" - Doors open 1.30 for 2.00pm film, £3 per head - TH

Feb 11th Parish Council Meeting - ALL WELCOME - 7.30pm - CCC

Feb 12th Art Club - Pastels - 1.30pm till 3.30pm - CCC

Feb 12th W.I. - Fish & Chip Supper - 7.00pm - CCC

Feb 19th Gardening Club - A.G.M. - 7.00pm - CCC

Feb 23rd "Community Action Day" - See Letters page & PC Snippets for details -10.00am CCC

Feb 24th Jazz Club - "The Music & Songs of Billy Holiday" see p.7 - £6.50 - 12.30 till 2.45pm - CCC

Feb 26th Art Club - Sketchbook Art - see page 11 - 1.30pm till 3.30pm - CCC

Feb 26th Book Club - "The Wilt Inheritance" - Sheila's - Pear Tree Farm, Padgett's Road - 7.30pm

April 6th TOOL FAIR - Three Holes Village Hall - from 10.00am - see page 3

Parish Church Services

Feb 3rd 11.00am A Carlin, A Day All Age Worship

Feb 10th 9.30am SE Tooke Holy Communion

Feb 17th 3.30pm Revs I & L Brady Evening Prayer

Feb 24th 11.00am Rev I Brady, V Smith Morning Prayer

Mar 3rd 11.00am SE Tooke, A Day All Age Worship

Every Friday 2.00 - 3.00pm Coffee, Cake and Chat in the Church building Daphne and Andrew

PLEASE NOTE — The Heron March Deadline

***The deadline for all copy for March's edition of The Heron is 20th February. ***

FEBRUARY BEING A SHORT MONTH. However, due to the amount of copy we are getting, leave it till then we may not have space. So - AS EARLY AS YOU CAN PLEASE !

Advertisers - all our advert rates and conditions can be found on our website www.theheron.info Business advertisers can book series of 6 or 12 adverts, paid in advance. Adverts for village fundraising events, personal announcements, or small private ads are usually free.

At the time of going to press, all information is as accurate and up to date as we can make it. Changes and updates may be published subsequently. All information contributed by outside agencies, including dates etc., will be assumed to be correct.

NB as a matter of courtesy no content from the Heron should be used without prior permission

Letters to the Editor



Hi Richard!

Apologies for the delay in following up the loose ends from last week's meeting. We talked about work in the Recreation Ground on Saturday 23rd February.

The aim is to have a **Community Action Day** to invite members of the public to join parish councillors and members of the CC committee in tree pruning, rubbish clearance and general tidying up, possibly including other parts of the village if enough people turn up.

It's an open invitation – the more the merrier! Could you pen something suitable, if you haven't already, including **10.00am start, bring gloves, and gardening tools?**

In terms of other PC news:
The headline is that - the 'Precept' is being lowered by £1,500 to £12,750, a decrease of 10.53% !

Dave Gibbs - PC Clerk

Many thanks Dave. That is indeed great news! I hope that as many villagers as possible turn up for the Community Action Day! Sort of a 'Thank You' maybe? Should be fun anyway! - Ed'.

Poppy Appeal

Dear Richard,
Please would you put this article in The Heron.
Thank you to everyone who helped with the Poppy Appeal.

After a hectic start to the Poppy Appeal, when no order of goods arrived until very late, I was ready to give up. But thank you to all the 'house to house' poppy sellers who encouraged me to continue, and offered their help when the order eventually arrived.

Between Manea and Christchurch £3,324.88 was raised. A very good result. So thank you to everyone who helped in any way to support the Poppy Appeal. Anyone who would like to help with house to house collections please contact Lesley Kennedy. Tel. 01354680401 or mob. 07947143864.

Well done all! - Ed'.

Health & Wellbeing Strategy Update: Tackling Fuel Poverty

(Continued from page 3)

The Council will be writing to around 6000 residents in January and February 2019 to encourage them to access the free service offered by the Trust; with a view to improve living conditions by maximising the uptake of advice, grants, and energy saving measures; thus improving the health and wellbeing of residents during the winter. A copy of the letter can be seen in Appendix 1. The Trust has already provided energy efficiency training to front-line Council staff in December 2018 to ensure that members of staff are well informed should residents contact the Council regarding the letter.

What happens next

Residents will be able to book a free home energy advice visit from an impartial and friendly advisor. The package of support will include the following:

- Access to funding from national or local grant schemes.
- Links to council services where a need is identified.
- Advice on energy home improvements (such as lack of loft cavity wall insulation).
- Review of energy usage and tariff, with the aim of reducing the cost of bills.
- Where possible enabling energy efficiency measures to be installed in properties.
- Encouraging the switch to metered water for low occupancy properties.
- Access to additional support such as the Warm Home Discount, Social Tariffs and the Priority Services Register.
- Encouraging the switch to a smart meter

The Trust will follow-up with each household within 5-6 weeks of a home visit to monitor behavioural change and determine if additional support is required. This follow-up call will also serve as a prompt to reinforce recommended behaviour changes.

For households that require support with larger scale home improvements, the Trust will refer to the energy and home improvement providers Orion and EON, with whom they have a formal partnership agreement, depending on customer preference.

The Trust can either contact the provider on the customer's behalf during the home visit to arrange a survey and funding application or, with the customer's permission; the Trust will pass on customer details to their trading arm that will follow-up with residents accordingly. Physical works carried out are monitored to ensure quality of work and customer satisfaction. The Trust is updated on a monthly basis on work carried out.

Hello from West Norfolk CCG I imagine your first thought on reading this was who are West Norfolk CCG? Well, the fact that most of you had this thought was the reason I decided to reach out to you. West Norfolk CCG is the NHS organisation which buys, or as we call it commissions, the NHS services you use every day. We pay for GP and hospital services, mental health services, the ambulance service, the community nursing service. In fact, the only NHS services that we don't buy are pharmacies, opticians and dental services.

I am Paul Williams, the chairman of the CCG, and I was a full time GP in Upwell for 30 years until I took partial retirement last summer, I still do one session a month in Upwell and spend a lot of time working at the CCG. For some time I have been writing a blog on our CCG website and you can read previous entries here -

www.westnorfolkccg.nhs.uk. Recently, however, I became aware that my words were only reaching a small proportion of the people we serve and I am keen to reach as many local people as possible. I want local people to understand what we are doing to provide healthcare, what problems we have and I want to give you advice about how you can best access our services and stay healthy.

As you probably know the Trusts who run the Queen Elizabeth Hospital and the area's Mental Health Services are both in special measures at the moment. That means they have extra scrutiny and help to reorganise themselves to ensure the service you, the patient, experience in the short time you have contact with the health services gets better. We are doing what we can to support these improvements and I think we will all see significant changes in how those services are delivered in the coming year or two.

There have been stories in the media recently raising the fear of losing services at the Queen Elizabeth Hospital. In truth there have been no decisions taken to do anything to threaten the future of the hospital and I want to assure you the CCG understands that we need a hospital in King's Lynn and we will be doing all we can to ensure its continuation. So what changes are going to happen? The key theme to all the plans in place is integration, which essentially means working more closely together. At the moment there is an enormous amount of money spent on health and social care but those two broad areas are funded separately and by different organisations. Communication and seamless working is difficult when the services are fragmented in this way. In an effort to improve this and get better integration

the government formed STPs - yes more confusing abbreviations - STP stands for

Sustainability and Transformation Partnership. (As seen on the back page of last months Heron - Ed'.) They are essentially a way to bring together all the organisations who are involved in delivering health and social care to enable more seamless working which should reduce waste and improve the patient experience.

I chair the Local delivery Group in the West which is the group where all the organisations I have mentioned above come together to plan how we can work more smartly and more closely together to improve services. I will go into more detail about this in future issues, but already we have seen practical improvements as a result of that closer working. We now have what we call West Norfolk Escalation Avoidance Team (West NEAT) where a group of NHS and social care professionals drawn from a range of different disciplines and based at St James' Clinic in King's Lynn act as a single point of contact for health and care professionals such as GPs, community nurses, mental health workers, paramedics from the ambulance service, social workers or therapists. The aim of the NEAT is to make sure the patient gets the help and support they require. If they really do need to go to hospital they will, but in most cases they are helped to stay at home where they want to be. Sometimes voluntary groups will be able to offer some ongoing support to ensure other issues in the person's life are addressed, such as loneliness.

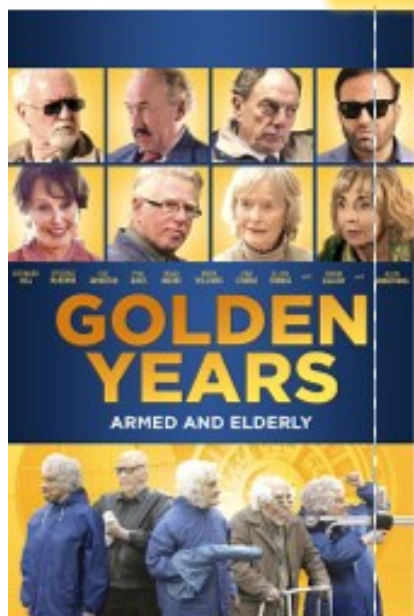
Finally, I expect many of you will have started the New Year with new enthusiasm for a healthier lifestyle, in particular you may be having a dry January. I listened to an interesting item on Inside Science on radio 4 this week where they discussed some good research into what, if any, benefits there were to having a dry January. You can listen to the programme yourselves on this link on the internet, www.bbc.co.uk/sounds/play/m0001vl8. I was quite surprised to hear just how big the range of health benefits there were from this simple act. Notably for me was the reduction in diabetes risk and cancer risk that followed not drinking alcohol. So if you are considering a period of abstinence I urge you to go ahead with that, you will do your body a favour.

Paul



THREE HOLES VILLAGE HALL, Junction of Main Road & Squires Drove, Three Holes PE14 9JY

Sunday 10th February 2019, 2pm: THE GOLDEN YEARS 12A



Fate, the pensions crisis and a steadfast refusal to accept the injustice of old age have contrived to force law abiding, retired couple, Arthur and Martha Goode into a life of crime. Refusing to take the loss of their pensions lying down and to fade away into their declining years, our characters decide to fight back. They decide to take back what was theirs in the first place. They decide to start robbing banks!.

NO NEED TO BOOK - Admission £3 per person. Doors open 30 mins before 2.00pm screening. Refreshments & Licensed Bar

Tel: 01945 773710, or 01945 772824

Upwell Jazz Club 2019

Christchurch Community Centre (Sat Nav PE14 9LL)

Sunday 24th February

*"Please don't talk about me
when I'm gone"*

*The music and songs
of Billie Holiday*

Guests*: Val Wiseman – vocals

Jimmy Hastings – tenor sax • Dave Newton – piano

Len Skeat – double bass • Sebastiaan de Krom – drums

"An appealing, stylish performer with a connoisseur's ear for repertoire, Val Wiseman is one of Britain's best jazz singers"

Time: 12.30pm - 2.45pm Admission: £6.50 Accompanied under-16s Free Bar, fresh rolls, crisps and savouries available Information from Nigel Smith 01945 773121

Pop-Up Café & Coffee Shop

Pop along and have breakfast with us!

We are now offering a
Full English Breakfast
plus sausage, bacon, and/or egg rolls,
using homemade produce,
and locally sourced, free range
meat and eggs where possible.

EVERY MONDAY MORNING

9.00am - till - 11.30am

Christchurch Community Centre
Hot Drinks, Biscuits, Cakes, and Cookies

All Welcome!
We look forward to seeing you!

PLEASE NOTE: With reluctance we will need
to increase our prices from 7th January

Stressed, in pain, anxious, sleep- deprived, or generally desiring some self-care?

I offer a non-invasive, non-religious, natural,
simple, and safe,
form of complimentary healing
for the mind, body, and soul.

Suitable for humans and pets.

Hands on/off and

Remote/Distant Healing sessions available.

Reiki promotes self-healing, relaxation and
sleep. It can also help to relieve aches and
pain, muscle tension, and fatigue. It assists the
body to cleanse itself of toxins and helps to
support the immune system.

If you are in need of any of the above described,
feel free to contact me for further information,
or to book a session

**Email: michelelowery24@gmail.com
or call 07739 378901**

**FOR SALE
FIRE LOGS**

**1 TON - £60
1/2 TON - £30
1 BAG - £3**

**FREE DELIVERY
01354 638380**

RICO'S HOT RHYTHM *will play for dancing and/or listening*

The BRAZA Club
Elm Road, March, PE15 8NZ
on

Friday 4th January, 2019 - 8.00pm - 11.00pm
Admission: £10.00 per person

Enrico Tomasso *Trumpet/Vocals/Leader*
Graham Hughes *Trombone/Vocals* • Tim Huskisson *Clarinet*
Thomas (Spats) Langham *Banjo/Guitar*
John Sutton *Drums* • Malcolm Skedd *Bass*

For further details please contact:
sheiladyer192@gmail.com
or Sheila/Dave on 01945 588325/07903 879209



Bought to
you by the
organisers of the
Elgoods Fathers
Day Jazz Picnic



BRIAN TWEED
and **SON LTD**

FAMILY BUTCHERS

FRESH BEEF, PORK, LAMB AND POULTRY
OUR SPECIALITIES ARE HOME MADE SAUSAGES AND BURGERS
HOME COOKED HAM, ROAST BEEF, ROAST PORK AND HASLETS
ALSO HOMEMADE PIES AND SAUSAGE ROLLS

Telephone: 01945 773248 48, Town Street, Upwell PE14 9DA

A JONES & SON

TELEVISION SALES/REPAIRS/INSTALLATION

FREE LOCAL DELIVERY
FIRST CLASS AERIAL INSTALLATIONS/ADDITIONAL POINTS

26 March Road, Wimblington, March, Cambs PE15 0RN

Tel: 01354 740320
CLOSED ALL DAY TUESDAYS

WINTER KINDLING **Now Available**



Available from Monday to Friday 8:30 to 4:00

Fenland Leisure, Fenland House,
Padgetts Road, Christchurch, PE14 9PJ



Upwell Computer Repairs

Sales – Repairs - Maintenance - Upgrades

Sales & Support
Internet Setup
Virus Removal
Tuition
Web Design
Email Setup
System Installations
Data Recovery Services



Laptop Screen Replacement
Windows Reinstallation
Hardware Upgrades
Software Upgrades
On-Site Services
Custom Built PC's
Internet Security
Network Installations

Contact Lewis today for a free consultation

01945 772717 - 07849 778525

support@upwellcomputerrepairs.co.uk - www.upwellcomputerrepairs.co.uk

Being one of the new secretaries for 2019, I am now responsible for submitting the blurb for the WI Clubs page each month. We have a new committee, with some new blood, and had an extremely lengthy meeting recently ending with suggestions for forthcoming events and activities to try and encourage a new generation of members to the WI. I wanted to include some of things members would like to see coming up in the forthcoming year - in the hope that this may peak the interest of girls/ladies in the village.

Our new President, Peggy Warby, welcomed all to the January meeting (including Sheila Day who is considering becoming a new member). Peggy then shared the sad news that one of our long-standing members, Doris (Ted) Rolfe, passed away recently aged 95. Doris attended her first WI meeting, with her Mother, at the tender age of 14 and had been a member of Christchurch WI up until 2018.

Apologies were received from Margaret Hayes and Sue Norman.

The evening was predominantly discussing and voting on the 2019 WI Resolutions. These were all read out by individual members and discussed at length. The resolutions were:

Improving Plant Biosecurity in the UK

Trees – Improving the Natural Landscape

Pelvic Floor Education

Suffering In Silence; end the taboo around menstrual health

A Call Against the Decline in Local Bus Services

Don't Fear the Smear

Resolutions 3 and 4 receiving equal majority votes.

Competition entries were received for *An Old Newspaper Cutting* with the following points being awarded:

5 points – Elaine Reed-Hughes & Ann Hicks

4 points – Sandra Lloyd, Val Parker, Sylvia McLean, Tracy Day, Peggy Warby, Viv Haresnape and Sandra Kay.

The 2018 Competition winners were announced and vouchers were given to the winners: Beryl Brooks, Tracy Day and Viv Haresnape.

February's meeting is a Fish & Chip Supper – with our delicious meal being provided by our very own Michele Nardecchia's Fenland Catering.

theWI
INSPIRING WOMEN

Competition – A Valentine's Day Item

Refreshments – Sandra Lloyd & Margaret Hayes

Raffle Prizes - Sandra Lloyd, Ann Hicks, Beryl Brooks, Margaret Sparro



VOTED PRESIDENT!!? But I only went to the loo for 5 mins!

We meet on the second Tuesday of every month, at the Community Centre, and are always looking for new members. We have some very exciting things already planned this year (including a trip to the Theatre Royal, Norwich next month, to see *Calendar Girls* and a 'back by popular demand' cookery demonstration by Richard Hughes later on in the year - details to follow later) and our members have expressed an interest in doing some other fun things, which we also hope to achieve throughout the year, to include: Picnic in the Park with Games, Cheese & Wine Get Together, 3 mile walk with pub lunch, Cinema, 10-pin bowling, Indoor Skydiving, Go-Karting, Escape Room, One-Day Sailing Course, Rock Choir Sing -Along.

Why not pop along for a taster session, for £3, to see if you like it. We look forward to welcoming you.

Elaine

*Someone asked me how old I am.
I told them that a lady never
reveals her age ... and neither do I!*



Christchurch Art Group



We meet in the Community
Centre on the 2nd and 4th

Tuesday of the month 1.30 – 3.30pm

We started this term reminding ourselves of colour mixing and pen & wash in watercolour.

February's topics will be Pastels & Sketchbook Art.

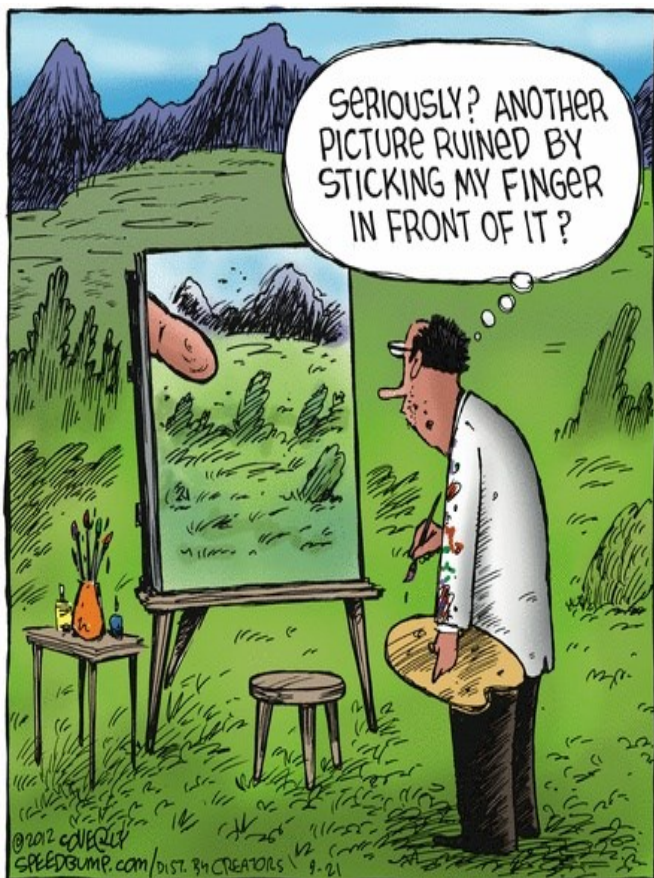
Our group is friendly and relaxed. We are all enjoying the sessions and have recently welcomed four new members. We have a tutor to lead us, but we can gain ideas and inspiration from each other. All artists have their own special style and approach so we have a lot of variety and enjoy ourselves

To cover costs from September we have a joining fee of £20 per term then an attendance fee of £5

This is reviewed from time to time depending on numbers attending. We welcome any new members, no need for previous experience. We all work at our own level.

Do contact Sandra (638478) or Jan (638217) for more information, or pop along during the session to see what we are up to.

(As usual you may always bring along your own project to work on if you prefer and I will help)



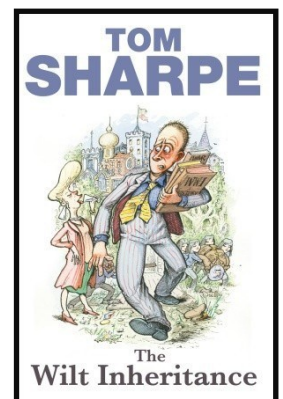
Christchurch Book Club

Book club will not have met by the publishing deadline of "The Heron" so this report is written before the meeting. We have been reading "Bourbon Creams and Tattered Dreams" by Mary Gibson. Although I do not have a "group response" to this book, my personal response (Sheila) is that, set is South London (mainly Bermondsey) in the 1930s, it was a gripping read and a well written book. Others in the group may disagree when we meet - nothing more likely!!!

Our February meeting will be on Tuesday 26th January, 7.30pm at Sheila's, Pear Tree Farm, Padgetts Rd. We shall be discussing "The Wilt Inheritance" by Tom Sharpe.

New members are always welcome, we are a friendly bunch! We read one book a month and no one worries if we do not get to the end (either because we didn't like it or that we simply ran out of time!) Books are supplied by the library (although some prefer kindles or audio-books)

For more information please contact Sheila Day on 07946635908.



What's New?

New challenge and fun page, answers to quiz's and game will be in next months issue.

It's that time of the month, stop what you are doing, eyes down for another page of interesting facts and games, how well will you do?

Interesting facts about Ely Cathedral:



1. The only surviving structure of the earlier monastery is 'Ovin's stone', the base of an 8th century cross.
2. Saint Etheldreda had married one prince, who died. She then married a second prince, but ended that marriage to become a nun. It's thought that the land she built the first monastery at Ely was given to her by her second husband.
3. The Ely Cathedral is 573 feet long. The nave (the central part of the church where people sit) is 250 feet long. This is the longest nave in Britain.
4. Ely Cathedral was built in the shape of a cross. It was constructed of stone and marble.
5. The cathedral is also known as the 'Ship of Fens'. It got this nickname because of its prominent shape as well as the fact that the landscape surrounding the cathedral is flat and watery.
6. In February 1322 a part of the building collapsed. When it was redesigned for the rebuilding of the damaged part, it included an octagon shaped tower.
7. There are various styles in the cathedral including ancient Romanesque/Norman, early English and Gothic as well as Victorian.
8. The shrine to honor Saint Etheldreda was destroyed in 1539. Henry the 8th disbanded several types of religious houses of worship in what was called Dissolution of the Monasteries. The cathedral was refounded in 1541, and had suffered only minor damage.
9. Ely Cathedral is the only building in the UK to have been included as one of Seven Wonders of the Middle Ages. It is a favorite site for visitors from all over the world every year.
10. The 'Great Restoration' of Ely Cathedral began in 1986. It was completed in 2000 at a cost of 12 million pounds.
11. Ely Cathedral continues to have resident choristers, which is not a common practice anymore and only a few cathedrals still do. It is a boys' choir that consists of 22 choristers. They can be heard on Sundays, feast days and at Choral Evensong most evenings.
12. Pink Floyd featured Ely Cathedral on the cover of their album 'The Division Bell'.



Junior Sudoku

Fill in the puzzle so that every row across, every column down and every 2 by 2 box contains the numbers 1 to 4. The numbers cannot be the same in each row or column.

	3		1
			2
	2		

	1			3	
3		6	1		
					5
5					
			3		4
	2			6	

Teenager Sudoku

Fill in the puzzle so that every row across, every column down and every 3 by 2 by box contains the numbers 1 to 6.

Last weeks answers

1	2	4	3
3	4	2	1
4	1	3	2
2	3	1	4

2	3	4	5	1	6
1	5	6	4	2	3
3	6	1	2	5	4
5	4	2	3	6	1
4	1	5	6	3	2
6	2	3	1	4	5

MAJESTIC

WINDOWS . DOORS . ROOFING
BI-FOLDS . CARPENTRY
CONSERVATORIES
COMPOSITE DOORS
HOUSE RENOVATIONS
GARAGE CONVERSIONS
FASCIA, SOFFIT, GUTTERS
FREE QUOTATIONS AVAILABLE

MIDDLE-MASS@LIVE.CO.UK

MOBILE : 07875 745125

OFFICE : 01354 461172

MARCH, CAMBS



Outwell Timber

For all your Timber and Building Supplies

ISLE ROAD, OUTWELL

PE14 8TD

Tel: 01945 77 21 16

FENCING, PANELS, TRELLIS
TIMBER, PLYWOOD, DECKING

SAND, BALLAST, GRAVEL

SCREWS, NAILS, BOLTS

PAINT, SILICONE, HAND TOOLS

LOCKS, ELECTRICALS, PLUMBING,
GUTTERING
UNDERGROUND PIPE & FITTINGS

CEMENT, MULTIFINISH, PLASTERBOARD

Cambridgeshire Fire & Rescue Service

Register your appliances

Cambridgeshire Fire & Rescue Service is encouraging residents to register their appliances for a safer 2019.

All you have to do is visit registermyppliance.org.uk, and register large appliances bought in the last 12 years.

Registering appliances can instantly improve safety in the home as it ensures that householders can be contacted swiftly if a safety repair is ever needed or if an item is recalled by the manufacturer.

With many households relying on appliances every day to handle essential chores, chill food and cook for their families, this quick task can give you peace of mind.

As an incentive to encourage owners to register their appliances, many of the leading brands on registermyppliance.org.uk are offering to enter registrants into free draws for a range of desirable prizes. Appliances being registered don't have to be in warranty, or brand new to be applicable.

Get the Call - Become an On-Call Firefighter

Cambridgeshire Fire and Rescue Service is looking to recruit more on-call firefighters to help serve local communities across the county.

CFRS is looking for men and women from all backgrounds to become on-call firefighters and provide emergency cover from either their home or their workplace.

On-call firefighters are a vital part of our Service and community. They respond to a wide range of incidents, from fighting fires, attending road traffic collisions, animal rescues to supporting other emergency services. In addition to responding to emergency incidents, our on-call firefighters support their communities by providing information and advice on a range of community safety topics.

They receive an annual wage to reflect the time they commit to being available plus additional payments for attending incidents and drill nights (one evening a week for two hours).

It's a hugely rewarding role, and we hope to encourage members of the community from all backgrounds to get in touch and find out more about becoming an on-call firefighter.

To find out more about becoming an on-call firefighter and to get in touch with your local fire and rescue service visit: www.oncallfire.uk.

To find your local station please visit www.cambsfire.gov.uk/find-a-fire-station-393.aspx

Rainbows & Brownies & now GUIDES too!



Christchurch Rainbows and Brownies had a busy Autumn term completing our first skills builder badge focussing on the Be Well theme. We have completed activities ranging from healthy eating, mental wellbeing, fitness and why sleep is important. This term we are working on our First Aid badge as well as looking forward to our first Easter Egg Hunt. We now have 25 girls within our unit which is fantastic.

As a result we made the decision to ask for volunteers to set up a Guide unit for girls aged 10-14. This will be starting after February half term; please keep an eye on the village facebook page or contact us for more information.

We are looking forward to another exciting and productive term.



LUNCH BREAK

MEET YOUR FRIENDS...

MAKE NEW ONES...

Join us for lunch at the Community Hall on the second and fourth Wednesdays of February, March and April. **12 noon - 2pm.**

Bring your own lunch. The kettle will be on....Hot drinks available.

NEED A LIFT? (no charge) Contact Wendy Yates. 638-448 If she can't bring you, she will connect you with someone who can!

Questions? Contact Annie on:-
01354 638088, or annie_nason@yahoo.com



Our Village Pub used to do lunches twice a month a while back, but that came to an end. Folks were disappointed, so our wonderful Pop-up Cafe ladies came up with their version of it, twice a month. The food was excellent, and the company great, by all accounts. However, their family commitments were such that they couldn't continue with the venture. They and their lunches have been much missed, which shows how much people appreciated their contribution to our extended village life. Thank you ladies! Now we will have "Lunch Break". It is happening on the 2nd and 4th Wednesdays of the month, 12-2pm, beginning in February. This is not my original idea. I was inspired by Lunch Break in a much smaller village, UFTON, Warwickshire, where I lived for a number of years. There, it happened once a month, only for an hour, in various homes. People took their own lunch and the host home provided hot drinks. It was fun to meet people and catch up. As we have such a superb facility here - our Community Centre - I thought it might be fun to try a Lunch Break in Christchurch, in the CCC, rather than in someone's home. Having spoken to a lot of people, I have found there is good support for the venture. Councillor Will Sutton found an organisation that funds small social ventures such as this and 'Hey Presto!' the CCC rent has been funded! Website - www.care-network.org.uk

So we are GOOD TO GO! COME AND JOIN US!?

Annie

Parish Council Snippets

JANUARY 14th

This month saw a 'full-house with no apologies for absence. Last month's minutes were approved and the meeting began promptly.

Public Time - Keith Hill spoke about the Community Car Scheme that his wife is involved with and stated that it is running smoothly and that no additional drivers are required at present.

Much support was expressed from the floor in favour of the Parish Council continuing their support for The Heron including Councillor Sutton, Sandra Kay, and David Yates. All said that it would be sad to lose such a vital village resource.

Concerns were expressed over the accumulation of village rubbish next to the school. PC would look into this matter.

Richard Guilford had heard that Tipps End wanted to use the Speedwatch equipment but he hadn't been contacted yet. He also hoped that someone, perhaps a member of the Parish Council, would take on the responsibility for Speedwatch due to Richard's other commitments. This could tie in well with the PC's other plans for traffic calming measures. Councillor James Hughes suggested that Simon Freeland was contacted about this. Graham Chappell said that it would also tie in with the local LHI Scheme.

Annie Nason had previously brought up the subject of 'Loneliness' and had now organised a FREE 'lunch club' where folks could gather for a chat and socialise. There could also be games etc. rather like Good Companions used to be. Full details would be in February's Heron. (See page 15 and also CALM on page 17 opposite - Ed'.)

Christchurch's allotment tenancy has been confirmed for the next five years.

A highway improvements scheme is in hand to slow traffic outside the Community Centre and will come into force once the 'gateways' are up. Speedwatch will hope to support the scheme.

Community Action Day - As mentioned last month, this is now arranged for Saturday 23rd February. The aim is to invite Christchurch residents to join PC councillors and members of the CC Committee to work on tree pruning, rubbish clearance and general 'tidying up'. 10.00am start, bring gloves and gardening tools.

Footpath issues are to be looked into.

The War Memorial clean up, in preparation for its forthcoming 100th Anniversary is being looked into. PC are currently awaiting contractor estimates. This needs to be done professionally to avoid erosion of the stonework. Rev. Townley had it built 20th February 1920.

There was no Police Report this month.

Councillor Sutton FDC - reported that he had to organise help for a lady in Friday Bridge who had a 'sink-hole' suddenly appear in her garden. A short term solution using sandbags around the hole was in place.

The Golden Age Fair had been very successful with some support from Christchurch residents.

Discussions are in progress to set up a weekly bus service to Downham Market. Will is meeting with FACT to get this organised.

Issues regarding streetlighting outside Rothco's and the top of Wayside are being looked into. LED's v incandescents.

With the current revised 'Conditions of Development' it is thought to be 'unlikely' that the proposed development of sixteen houses on the above site would now go ahead as costs would be too high!

Many expressed their support for Will Sutton to stand as an Independent Candidate at the next election.

A 'Gulley Sucker' has been booked to focus on Church Road but also other targeted areas.

Christchurch Recreation Ground Charity reports that their funds are in good order. Dave Gibbs is sending a list of names and responsibilities to the solicitors.

Income & Expenditure - There will be £418 of recoverable VAT and a surplus from 2018 of £7988. Within the draft budget for 2019 will be a new litter bin for the front of the Community Centre - £308.74 inc. fitting and emptying free of charge. Also there has been a new one placed in the lay-by.

Village 'Precept' has been dropped by 10% for 2019 as sufficient funds are currently held to enable this to happen. **Therefore The Heron will continue to receive Parish Council funding until at least 2020!**

Keith Hill was insistent that some form of 'contract' be put in place between the PC and The Heron. Cllr James Hughes would look into this.

A vehicle activated device (VAD) would be placed outside CC and/or Church Road funded by the PC.

The meeting closed at 8.45pm. A RECORD!



Campaign Against Living Miserably

What makes a mate? - Generosity, Trust, a shared sense of humour, shared memories or, sometimes it's just the simple act of asking if someone's OK? Because small gestures can make a BIG difference if someone's going through a tough time.

A text from a friend, or a chat on the phone can really help when you are feeling ALONE!

Small gestures can mean a lot to someone going through a tough time, but recent research commissioned by UKTV Channel Dave showed that over 1 in 3 men wouldn't know what to do to help a friend who's struggling. That's why we've teamed up with Dave to say:

Be the mate you'd want!

Over the next year you'll be seeing CALM and Dave teaming up across social media, radio ads, billboard posters, and even in your local pub and cafe – encouraging EVERYONE to look out for their mates in whatever way they can.

The power of small gestures

2,300 people in the UK were surveyed in research commissioned by Dave. 86% of men agreed that they would want to help a mate going through a tough time, but tellingly 35% wouldn't know what to do. The survey also revealed a big difference between men and women when it came to noticing the warning signs: 41% of men find it difficult to recognise when their friend is having a tough time, compared to 26% of women.

Some key insights showed that small gestures can make a big difference to people going through a tough time.

38% said they would appreciate a message from a mate,

48% would appreciate friends making them laugh,

41% would appreciate a friend suggesting they go for a drink.

BE THE MATE YOU'D WANT!

Dave and CALM aim to give people a little nudge to speak up and check in on their mates. We'll celebrate the power of simple gestures with wit and panache (and a helping hand from some big pretty deal comedians.) In 2019, there'll be a podcast, a commissioned comedy, and all sorts of other surprises. We can't wait to share it with you all!

a text

a tweet

an email

a visit

a chat

a phonecall

Just something

to show

you're there!

LONELINESS - Research has highlighted that [millions of men experience loneliness, but suffer in silence](#). This campaign is our small gesture for anyone who may be going through a tough time. We hope it will encourage people to reach out to friends who need a reminder that someone is thinking of them and someone cares.

SUICIDE - is a problem that affects everyone, so CALM aims to work with the whole of society on campaigns that change culture and encourage help-seeking behaviour. Dave and CALM's 'Be the mate you'd want' campaign will help to promote a positive, proactive and empathetic approach when it comes to mental health. One of the fundamental issues is that, when folks are finding things tough or struggling with their mental health, they still face social stigma, so we hope the campaign will create a positive environment where they can feel comfortable opening up to and supporting their mates.

CALM

0800 585858

Please see also LUNCH BREAK on page 15



live happy!
with
Slimming World

save £5
join now!
Just £9.95 on week one
then £4.95 each week

DODDINGTON
MONDAYS 9:30 AM, 11:30 AM,
3:30 PM, 5:30 PM + 7:30 PM
DODDINGTON VILLAGE HALL,
BENWICK ROAD
TEL: DIANE 07707 547604
WWW.SLIMMINGWORLD.CO.UK/
SLIMWITHDYNAMICDI
OPEN BANK HOLIDAY MONDAYS

find this delicious recipe online
   slimmingworld.co.uk

Slimming
 WORLD
 touching hearts, changing lives

FOUR SEASONS TREE SERVICES

Qualified & Professional Tree and Client Care

PRUNING ● LOPPING ● FELLING
 PLANTING ● REDUCING & RESHAPING
 CROWN RAISING ● HEDGE TRIMMING
 THINNING ● POLLARDING ● STUMP REMOVALS
 OVERGROWN GARDENS PUT BACK INTO SHAPE
 FRUIT TREES TREATED ● LOG & WOODCHIP SALES




FREE ESTIMATES & ADVICE WITH NO OBLIGATION
 For quality jobs at a competitive price call:


Home: 01353 721665 - Mob: 07771 707921

All work carried out to BS 3998 Standard

A genuine family managed business est. for over 30 years - Fully Insured

THE NAME YOU CAN TRUST

 Environment Agency
 Registered Waste Carrier

 TRUSTED TRADERS

This company offers a 7 day cooling off period

L.W Vehicle Services

Car & Commercial repairs



Est 2003

- ~ Electrical and Mechanical Diagnostics and Repairs
- ~ MOT Preparation & Testing
- ~ Servicing and Inspections
- ~ On Site Service
- ~ Breakdown / Recovery Service
- ~ Van and Car Sales

Contact Lee on 07717 738796 Or Tel 01354 610172
 March Road, Welney



MOBILE CATERING

**Freshly cooked fish & chips,
sausages, chicken and pies.**

**Every Friday at the Dun Cow
from 5.00 'til 8.00 pm.**

Call 07756 170 700

to book us for your
party, function
or fund raiser.



P R PARKER

Established 1978

General Building and Maintenance

CARPENTRY	REFURBISHMENT	GLAZING
PLUMBING	AND	PAINTING
PLASTERING	RENOVATION	DECORATING
BRICKLAYING		RENDERING
ROOFING	01354 638380	GUTTERING

FREE ESTIMATES

All Types - Houses - Flats - Shops - Offices

A.R. CLINGO

FUNERAL DIRECTOR

**Family Independent
Business**

**Private Chapel of Rest
Personal Attention**

24 Hour Service

Full estimates given at all times

Golden Charter
Funeral Plans



Pinfold House
St. Peter's Road
Upwell, Wisbech
Phone 01945 772502

BUILDING DECONSTRUCTION

Buildings bought and all materials recycled/
upcycled

Pre 1930s preferred
but all buildings considered
from barns to cottages
including site clearance

FREE QUOTATIONS GIVEN

We have a large number of salvaged
ARCHITECTURAL ITEMS FOR SALE

Bricks & other building materials,
roof trusses etc.

Firewood, plants, and hanging baskets

**COME IN AND SEE US
AND HAVE A BROWSE!**

Call Matt or Sarah Lawrence on
Tel: 01354 638977 or, Mobile: 07856 291787
Toll Farm, Ha-Penny Toll Road,
Three Holes, Norfolk,
PE14 9LJ
Email: buildingdeconstruction@yahoo.com

Chapters That Need To Be Closed!



Over the Christmas period there were numerous films which I wanted to see, so like most people who are busy I recorded them and have only just now had time to watch them. One such film was 'Saving Mr Banks', the story goes that in 1961 the author of the Mary Poppins novels P.L.

Travers was going through a rough patch. Royalties were barely coming in and her writing had all but dried up.

But she does have another option. Walt Disney has invited her to Los Angeles studios as he wants to make her books into a film. Even though Pamela has declined Walt's pitches for 20 years, her agent encourages her to give it a try, so a reluctant Pamela jets off to sunny LA with her mind made up that she's not going to give into any of Mr Disney's magical ideas. She pooh-poohs nearly every song and set design and is repulsed by the idea of animated dancing penguins, Walt can't seem to win her over. But then he realises that the story of Mary Poppins and Mr Banks is more personal to Pamela than she lets on.

The tale of the heroic nanny represents a painful past that Pamela is struggling to release and during a heart to heart, Walt asks: 'Don't you want to let it all go and not have a life dictated by the past'. Maybe we need to ask ourselves the same question, maybe we have chapters in our lives that we need to close. A twist on life's journey may have left us bruised, guarded and defensive. We torture ourselves with the should haves, would haves and could haves.

Before his conversion the Bible writer Paul persecuted Christians, but there was a stage in his life when he knew he had to let go and give himself to greater things. He wrote this 'Forgetting what is behind and straining towards what is ahead I press on towards the goal to win the prize for which God has called me heavenwards in Christ Jesus'. (Philippians 3:13NIV).

We face a New Year and by drawing close to Jesus and making that new start, we can open a new chapter and unlike Mary Poppins we can travel baggage free!

Ian

Crumbs from The Good Book

By our very own Church Mouse....

Church mice are very small. We have to snuggle along together to keep warm in cold weather. You cannot afford to fall out with your family. You would freeze to death on your own. Who remembers "The Beast from the East" this time last year? Brrrrrr. That was serious cold.



A number of our wider mouse family didn't get through that winter blast. Sticking together is a serious business when your life depends on it; also, come to think of it, when your own wellbeing is in need of some support. That fella the Good Book talks about had some good friends. At least, he thought they were good friends; but when he needed their support the most, they kinda disappeared. Understandable, I suppose, as the Roman soldiers of the day were not to be argued with.

That bit of his story ended in his (horrible) death. Or did it?

The Good Book says he came back to life and forgave his friends for their betrayal. In fact, he stated that he would never betray them and would be with them always until the end of time. Big hearted.

He also said "Pass it on". So that promise wasn't only for his pals at that time, but for his friends of all time. That particular crumb needs some deep thinking!

E.





TOWNLEY SCHOOL AND PRE-SCHOOL

Christchurch, Wisbech, Cambs. PE14 9NA

Email: office@townley.cambs.sch.uk

February 2019

Story café

On Friday 18th January, Emperor class held their Poetry Story Café. We welcomed parents who also joined in with our Golden Mile (10 laps of the playground!)

Football Tournament

Congratulations to our 5-a-side football team, who came in 3rd place overall at the cluster tournament.



Parking

We are aware that there are some issues with parking at drop off and collection times. Please be assured that, as a school we are doing everything we can to keep on top of this. Mrs Higgins does her best to be at the school gates each morning, our PCSO's visit regularly and our parents and carers have had reminders regarding parking.

Catering Assistant Vacancy

Our catering contractors are looking for a catering assistant to work in our school kitchen, 10 hours a week Monday to Friday. If you are interested please contact HR@lunctime.co.uk

Internet Safety

We have dealt with an internet safety incident this week. As part of Internet Safety week, we will be having a visit from the police to deliver a session on safer internet use. Also, as part of PSHE this term, children will be learning more about the safe use of the internet. Please can we take this opportunity to remind you that most social media apps and websites have a minimum age of 13.

Pre-School

Our Pre-School takes children from age 2 up to school age. We are currently full for the rest of this school year and have a waiting list for September 2019. If you would like to book sessions for your child at our Pre-School for September, please call the school office and ask for Claire.



Check us out on Facebook!

Townley School and Pre-School

CHRISTCHURCH ELECTRICAL

Simon Freeland Hill Farm, 3 Church
Road, Christchurch, PE14 9PQ

Tel:01354 638802 Mobile:07727 046439



Domestic electrical work undertaken.
No job too small.
Free quotations / estimates.



www.electricalcompetentperson.co.uk

www.electricalsafetyregister.com



March Stationery & Print

Booklet Printing
Business Cards
Digital Photos
Leaflets
Newsletters
Banners

01354 656614

sales@marchsp.co.uk

5 Fenland Walk, March, PE15 8TW

HOUSE CLEARANCE

Christchurch
& surrounding areas

Removals & House Clearance
Garages, Sheds & Attics Emptied
Single Items to Full House
Antiques & Modern Taken
Light Removals
Valuations Given
Best Cash Prices Paid

Call for no obligation quote

01354 638178

GRANARY STUDIO
Christchurch

Contemporary pictures and bespoke framing

The Granary, Hall Farm,
Upwell Road
Christchurch Cambs PE14 9LJ
01354 638614

Maximise the enjoyment of
your home
with the professional help of

Brimstone

Garden Design Services

in association with

SFC Services

Design Development Maintenance
Hard and Soft Landscaping
Household Repairs and Building Maintenance

for free estimates, contact either

Cliff 01354 638217 or 078 080 78518
cliff@brimstonegardendesign.com

or

Steve 01354 638964 or 07725 866445
sfclifford67@gmail.com

Beauty Treatments

By
Jane

N.V.Q. – i.b.d. – Babtac

LCN Microdermabrasion Facials
NEW Oxygen regeneration Facials - less
outlay than Botox (a celebrity favourite)
NEW Non-surgical firming lift and tone
St.Tropez Spray tanning
Gel pedicures
Shellac manicures
Week-end & semi permanent
eyelashes

Rose Cottage,
Christchurch
Telephone: 01354 638378



Paul Braybrooke

Oil Fired Boiler Engineer

Boiler Servicing & Breakdown Service

Commissions
Tank Replacements

Phone 01353 777788
07946 735691

The Newbie Blog.

DOGS, CATS AND HORSES.

I am of the opinion that there are more dogs than people in this village. I bet I'm right (:-: Not that it matters; just an observation.



Considering that there aren't really any areas for dogs to roam in our village, I am impressed that so many people walk their dogs anyhow. It is truly a social thing. Dog walkers all seem to know each other and often meet and greet at the street corners. I don't

have a dog, so I miss out on that social interaction. However, I am not a 'doggy' person. I don't 'do' dogs, Snoopy being an exception. Happy Valentine's Day Snoopy! I love all animals, don't get me wrong; but not all of them up, close and personal. I 'do' cats. In fact I have two, a brother and sister (neutered) who are 11 years old. There are probably more cats than people in the village too, but I wouldn't care to try and count them. In my experience, generally



speaking, cats won't do as they are asked and certainly wouldn't sit to be counted. Well, mine wouldn't anyway. They can look at you with a terrifying expression sometimes. So much so that one can understand why

cats have been associated with witches on broomsticks!

I love to hear and see the horses being ridden through the village. I know almost nothing about horses, but what magnificent animals. Animals are such a joy.



Precious friends. People who love their animals wouldn't be without them; great companions. David Attenborough is warning us that world-wide, animals are becoming endangered in every place. That is so shocking. We need to do our bit for conservation. Aren't we fortunate to have the WWT Welney on our doorstep?

Annie

Vet's View

by Nick Wojciechowski

The Dirty Dozen

Unfortunately, this month's column isn't about the iconic movie. It's about dog poo.



We walk our dogs regularly using the footpath in the fields behind the football field. Through the last several months I had the 'pleasure' of witnessing the severity of fouling problem in our village. Poos large and small, of different colours and textures. Quite a lot of them.

I have a weakness, I must confess – I cannot leave dog poo that I find on my walk. So through the year I have been coming back from my walk carrying poos of my dogs' and the others. I was fairly OK with that until recently when I collected, well, the eponymous "dirty dozen" during one walk.

I assume that some people in our village don't collect their dogs faeces because they assume that they are being left far in the fields. I would like to correct them – maybe they are far in the fields but this is a frequently used dog walk route and several dogs and their owners walk across the path every day. And both people and their pets can have the 'pleasure' of stepping on dog poo. Obviously, not really fun.

Everybody knows that collecting dog poo is a legal obligation. I would like to explain why. Dog faeces carry a lot of bacteria, viruses and parasites. Some of them might thrive in the environment for months. There is one particular parasite, roundworm called *Toxocara canis*, which is dangerous to the people. Humans are not the right host for the parasite and it might end up in many different tissues, like brain, eyes, liver or lungs, leading to severe health hazard. This is why collecting dogs' poo is a legal obligation. One cannot become infected when collecting the faeces through a poo bag. But if your dog carries the parasite eggs on their paws to your home then the problem becomes much more serious.

I have taken the liberty of becoming the "owner" of the collected samples, taking faeces for examination at my veterinary hospital. I have found evidence of roundworms and tapeworms. This suggests that many dogs in our village are not up to date with their worming regimes and they also create infection risk for other dogs and people. Therefore I would like to urge my fellow villagers to make sure that their pets are wormed properly and to please remember to clean up after your dogs! Lets be kind to each other!

Nick

In Loving Memory of
Doris (Ted) Rolfe



1923 - 2019

Who passed away on New Year's Day 2019

Aged 96 years

Trish, Doug, and the Fisher family would like to thank everyone for messages and cards received since the loss of our dear Mum on New Years day.

Mum had spent all her life in Christchurch except for the last eight months when she was in care in Wisbech. There are very few people in the village who didn't know her. She was always friendly and interested in anyone she met, from children going to school and those walking their dogs whose names she also knew.

It is hard to pick out one individual but we would like to say a big thank you to her dear friends Alma and Sheila, who before she left the village visited her every day. We know how much she looked forward to them calling.

Mum was probably the oldest remaining resident in the village and as the late Alan Russell once said "she was the grand old lady of the fen".

She will be missed by so many, but we would like to thank everyone in the community for your care friendship and support during her lifetime.

Tricia Fisher

I will always remember her fondly as 'my little weather lady!' Who popped out in her chair on bright, sunny days, and in when it was dull. A happy soul. A village character who will be much missed. Richard - Ed'.

In Loving Memory of



Kate Edna Brett

The dearly loved Wife of the late William Brett.

Who passed away peacefully on
Thursday 29th November, 2018.

Aged 98 years.

Many villagers will remember this gentle soul who was always known to her friends as Kitty.

Sadly, she passed away at Tapping House Hospice, Norfolk, after a short illness.

She celebrated her 98th birthday in August last year.

Kitty had worked for many years in the City of London before retiring to Fen View some thirty five years ago with her husband William.

Kitty was the secretary of the Good Companions Club and chairperson for many years.

David and I were friends with Kitty for many years, taking her to the doctors, on shopping trips, church etc. Kitty actually took her first communion at the village church. She was a very private person but enjoyed the company of others, and scampi & chips on a Friday night.

Kitty was a truly lovely lady. R.I.P. dear Kitty.

Wendy & David Yates

Fond memories of a gentle soul who I escorted home several times after her visits to village plant sales. A truly gentle soul.

Richard - Ed'.

Useful Telephone Numbers

Age UK Cambridgeshire	0300 6669860
Alzheimer's Society (Fenland)	01945 580480
Christchurch Resident's Association	01354 638990
Churchwarden - Mrs. D. Symons	01354 638352
Citizens' Advice Bureau, Wisbech	01945 464367
Community Car Scheme (to book a journey)	07902 316360
Community Centre bookings	01354 638478
Community Fire Safety Officer	07717858166
District Councillor - Will Sutton	01354 638025
District Councillor - Michelle Tanfield	07908 707129
Electricity Faults - UK Power Networks	105
FACT	01354 661234
Fenland District Council	01354 654321
Floodline	0845 988 1188
Library - March	0354 0455225
National Debtline	0808 808 4000
Norfolk Dial-a-Ride	01553 770310
Parish Clerk - David Gibbs	07932 191050
Parish Councillor - Jill Bliss	01354 638343
Parish Councillor - Richard Lloyd	01354 638956
Parish Councillor - Roger Gladwin	01354 638538
Parish Councillor - Geoff Harper	01354 638681
Parish Councillor - James Hughes	01354 638310
Parish Councillor - Peter Owen (Chair)	01354 638847
Parish Councillor - Nigel Russell	01354 638279
Police - PCSO Sue Clarke	07738025220
Police - Emergency	999
Police - Non Emergency	101
Telephone Complaints	0345 145000
Townley School	01354 638229
Trading Standards	845040506
Train Information	08457 484950
Upwell Health Centre (and out of hours)	01945 773671
Upwell Health Centre - Pharmacy	01945 774934
Veterinary Centre - The Crossings (D'Mkt)	01366 382219
Vicars - Ian & Lynda Brady	01354 740627
Water Emergencies	08457 145145

Club Contacts

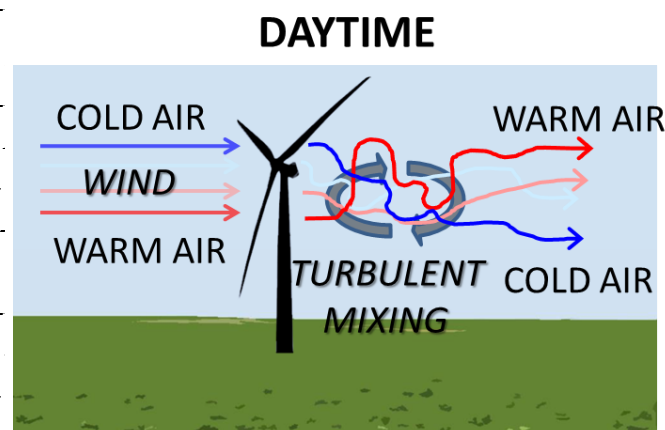
Art Club - Jan Clifford	01354 638217
Book Club - Sheila Day	07946 635908
Craft Club - Wendy Yates	01354 638448
Gardening Club - Marion Hawthorne	01354 638230
Short Mat Bowls Club - Wendy Keen	01945 772737
WI - Peggy Warby	01354 638339

Neighbourhood Watch

Colin Steenson - Church Rd (East)	638664
Sandra Kay - Crown Rd	638478
Shirley Knight - Church Rd (West)	638779
David Yates - Church Rd (West)	638448
Julian Swallow - Upwell Rd (North)	638679
Jackie Wood - Upwell Rd (North)	638679
Simon Freeland - Upwell Rd (South)	638802
Richard Guilford - Area Co-ordinator	638990
David Harrowing - District Co-ord.	01945 870963

And Finally!...

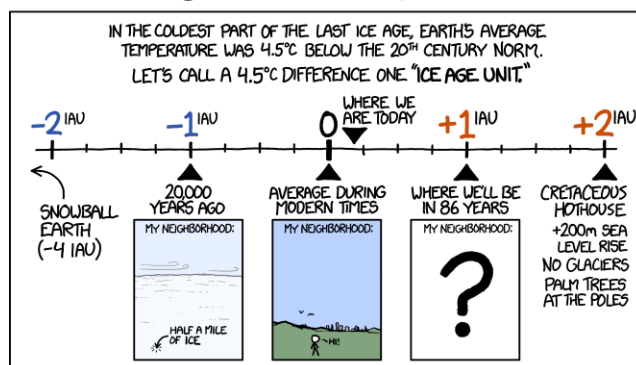
Ain't it bloody cold! Excuse my French! All that lovely mild weather right up to Christmas and beyond has rather spoilt us methinks!



Trouble is those wind turbines stir everything up anyway! That's fine when they create warmer, milder weather by warming the colder air blasts, but now they are stirring up winds from the Arctic and rapidly cooling the warmer fronts! Hence the recent rapid drop in temperatures!

WITHOUT PROMPT AGGRESSIVE LIMITS ON CO₂ EMISSIONS, THE EARTH WILL LIKELY WARM BY AN AVERAGE OF 4°-5°C BY THE CENTURY'S END.

HOW BIG A CHANGE IS THAT?



Ironically it's a scientifically proven fact that Global Warming has changed weather patterns making winters colder, but has also shunted the winter months forward. Three years ago, working in the garden, I developed a full tan during the last two weeks of March! What of this Spring I wonder? Meanwhile I'm off to buy some more coal and logs as the central heating's not quite cutting it!

'Till next time! - Ed'.

Web links in the Heron are active when viewed in our online version www.theheron.info

Poultry Keepers Encouraged to Reduce AI Risk!

The UK's chief veterinary officers are encouraging all poultry keepers to take action NOW to reduce the risk of Avian Influenza (AI) over the winter.

They have recommended simple measures that all bird keepers, whether they are running a large commercial farm, keeping a few birds in their back garden, or, rearing game birds, should take to protect their flocks over the winter months. These include:

Keeping the area where birds are living clean and tidy

Controlling rats and mice

Regularly disinfecting hard surfaces

Cleaning footwear before and after visits

Placing chicken feed and water in fully enclosed areas that are protected from wild bird ingress

Removing any spilled seed regularly

Erecting fencing around areas where birds are allowed and limiting their access to ponds or areas visited by wild waterfowl

(With Welney WWT so near to us the latter point is particularly important for Christchurch's chickens -Ed'.)

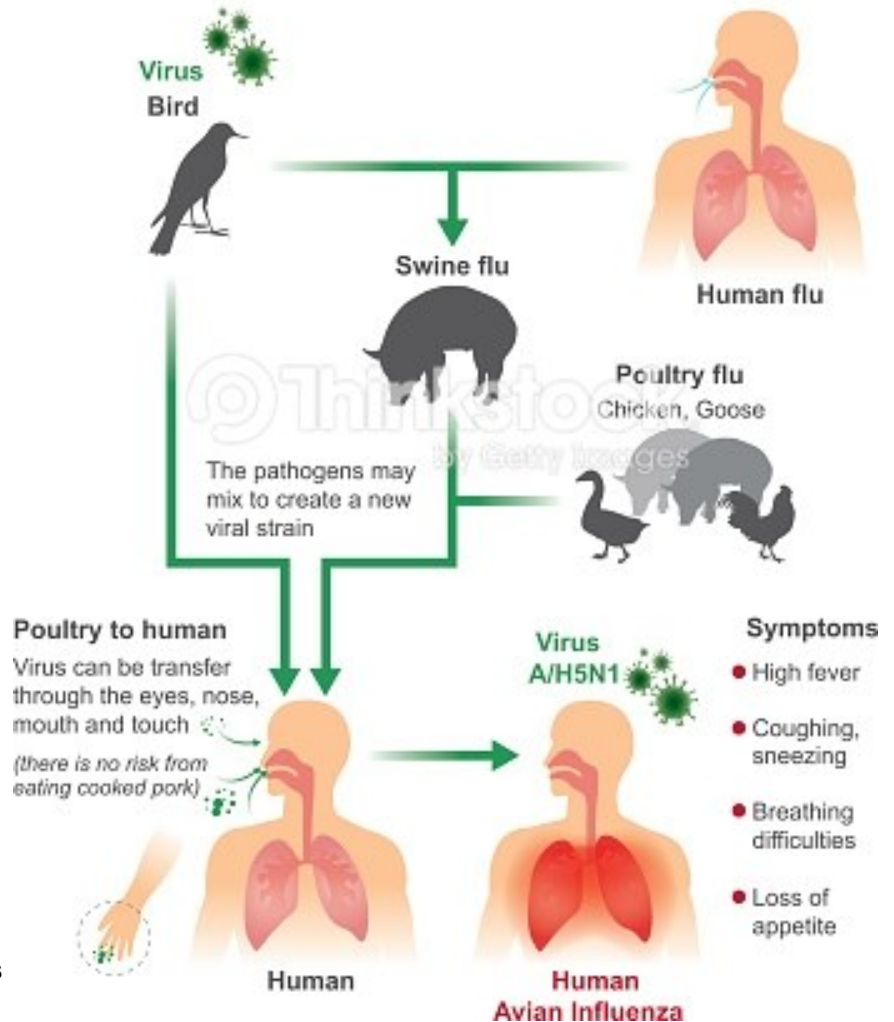
Where possible they are also advising avoiding keeping ducks and geese with other poultry species

Since June 2018 there have been no detections of AI in poultry or kept birds in the UK, and the UK has thus kept its OIE country freedom status since September 2018.

A joint statement by all four chief veterinary officers ran: "Avian flu continues to circulate in many parts of the world and with the colder months now upon us the risk of disease spreading from migrating birds is increasing. It is CRITICAL that ALL keepers of poultry, including game birds and pet birds, act now to reduce the risk of transmission of avian flu to their flocks. Good biosecurity should be maintained at all times, including regularly cleaning and disinfecting the areas where you keep your birds, and keeping them separated from contact with wild birds wherever possible".

Avian Influenza

A type of influenza that occurs mainly in birds
Outbreaks have occurred in poultry in Asian countries.
Humans have gotten sick in many Eastern Asian countries.



All bird keepers are encouraged to sign up to a FREE text alert service (www.daera-ni.gov.uk/articles/avian-influenza-ai) by texting BIRDS to 67300. Keepers should also ensure that they register on the Great British Poultry Register. This is now able to be completed and submitted successfully online.



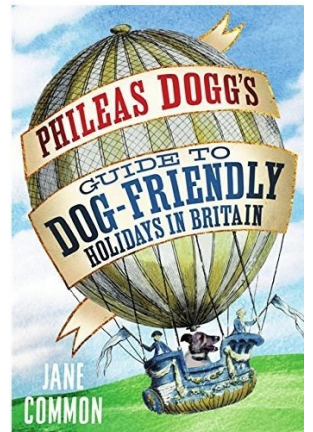
Looking for a dog-friendly holiday?

Husband and wife team Paul & Julie Higham, who run Pawprints Dog Friendly Holidays in Sutton-on-Sea, Lincs, love dogs so much that they only take bookings from dog owners. Furthermore, there is no restriction on the number of dogs you can take, and, amazingly, they DON'T CHARGE FOR DOGS!

"We originally started the business in 2014, in Devon, after we'd struggled to find anywhere that would take all our dogs," says Julie. "We were very involved with rescue dogs as well as our own, so when we eventually found somewhere that welcomed us in Norfolk we loved it. The owner suggested we start something similar down in Devon, where we already had a holiday home. We did it and it was very successful but as we always like to give things the personal touch we thought it was just a bit too far from where we lived, so we started to look for something else and fell in love with Sutton-on-Sea in Lincolnshire. We were initially going to buy one bungalow but ended up buying two which we then tore apart and made into what we now consider to be very dog-welcoming accommodation!

Non-dog owners have so much choice of where they can go, so we decided our holiday homes were going to be purely for people with dogs. Everything has been designed to help owners and dogs have a happy, safe, holiday, where they don't have to worry about anything. There are enclosed gardens, outside taps, wooden floors, leather sofas, and both properties are very close to some lovely beaches and walks. The beauty of this area is that even during summer you can find areas of beach with hardly anyone on them, and there are not many restrictions for dogs. We don't care how many pooches you bring, and when someone says that they have had a wonderful holiday it makes us feel proud and happy. Paul and I are passionate about what we do!"

For more info. visit
www.pawprintsholidays.com
Prices range from £525 per week in the winter months to £995 per week in peak season.



CORNWALL

Multiple dogs allowed



Creekside Cottages®
Nr Falmouth in Cornwall

Comfortable, Peaceful Cottages
sleeping 2 - 8.
Available throughout the year.

T: 01326 375972
www.creeksidecottages.co.uk

Dog Friendly

WALES

Multiple dogs allowed

Cefn-Du Holiday COTTAGES PEMBROKESHIRE

Dogs and their owners will find everything they need for a comfortable stay at the 5 ★ Cefn Du farm. The three self-catering cottages have their own securely fenced garden/patio area.

Please quote 'YOUR DOG' to obtain a 10% discount

Tel: 01239 831530
www.cefnduholidaycottages.co.uk

SOMERSET

Disabled Access

PRIMROSE HILL HOLIDAYS

SELF CATERING BUNGALOWS
BLUE ANCHOR BAY, WEST SOMERSET

PRIVATE GARDENS WITH SEA, CASTLE AND STEAM RAILWAY VIEWS
DOGS VERY WELCOME
WHEELCHAIR ACCESSIBLE
ADDITIONAL AIDS/EQUIPMENT AVAILABLE ON REQUEST

01643 821200
WWW.PRIMROSEHILLHOLIDAYS.CO.UK

NORFOLK

Multiple dogs allowed

Ollands Farm Barn

We offer the best dog-friendly holiday in Norfolk.
18th century converted barn close to coast & Broads.
Sleeps 2/3. High quality self-catering accommodation, safe secure gardens.

Now also available, Chapel Cottage, sleeps 4. See website for details

Tel: 01692 652280
E: mastuart@talk21.com
www.ollandsfarmbarn.co.uk

Unlimited dogs welcome

Any views expressed in The Heron do not necessarily reflect the views of The Heron Editorial Team. The team aim to provide a balanced view of village opinions where such views are expressed. We reserve the right to edit any submissions where we feel this is appropriate.