

# The Heron

Community Magazine

January 2018

Delivered to homes in Christchurch, Euximoor and Tipps End - £1 where sold

## *In this issue!*

Environment Issues	2
Community Info	3
Editorial	3
Diary Dates	4
Church Services	4
Letters to the Editor	5
Joan Smith	6
Lifeline 24	6
Environment Quiz	6
Parish Council	7
Clubs pages	10 & 11
Youth Page	12
Fashion Page	13
Environment cont.14&	15
4Ocean	16
Christmas Leftovers	17
Fire and Rescue	18
Townley Page	19
Welle Cinema	22
Winter Health Update	24
Heron Sport	24
Road Closure Info	25
Small Ads	25
Useful Numbers	26
And Finally	26
Christchurch Walks 2	27
Food Fayre	28

## RESOLUTIONS

WE CAN ALL HELP IMPROVE THINGS



## ENVIRONMENTAL SPECIAL

WITH CHANGES IN THE WAY WE LIVE

## WE NEED THEM!

### Editorial Team:

Richard Guilford – Editor

Linda Webster – Treasurer & Ad. Manager

Support Roles - Derek Randall-Hall, Elaine Reed-Hughes, Lewis Bennett, Sandra Kay & Team

### Web Site:

[www.theheron.info](http://www.theheron.info)

### Enquiries:

[editor@theheron.info](mailto:editor@theheron.info) / 01354 638990

[adverts@theheron.info](mailto:adverts@theheron.info) / 01354 638124



# THE ENVIRONMENT'S IN A MESS – WHAT CAN YOU DO ABOUT IT?

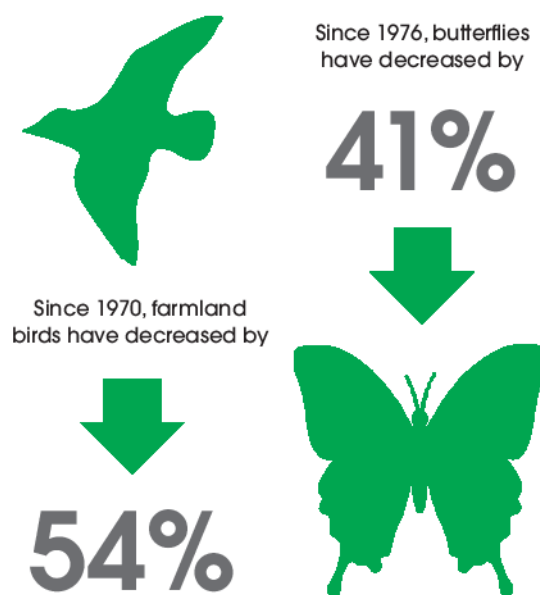
## THE BIG RURAL ISSUES OF THE PAST 10 YEARS

From the badger cull to building on the green belt and the health of birds and wildflowers, the past 10 years have been momentous for the UK countryside.

**Mark Rowe** takes a look at some of the major rural issues of the past decade ...

### WILDLIFE DECLINES AND INCREASES

Biodiversity indicators for the UK were first published in 2007 and highlighted long-term deteriorations in farmland and woodland birds, butterflies and plant diversity. The 2016 State of Nature report showed the situation had got even worse: farmland birds down by 54% since 1970; butterflies by 41% since 1976. Between 1970 and 2013, 56% of species declined, though 44% of species increased. The report said climate change had a “highly significant impact” along with a switch from spring to autumn sowing, reducing food and habitat for many species. Farmers say recent changes are now filtering through and improving the picture. A ban on neonicotinoids, linked to a decline in bees, was introduced in 2013 and remains in place.



In 2015, the price farmers were paid for milk dropped by

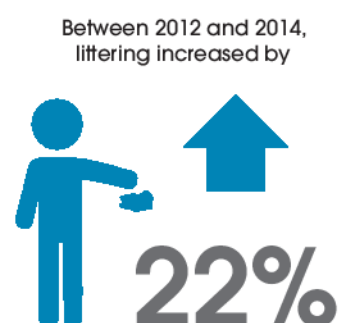
### DAIRY CRISIS

Dairy herd numbers had dropped from 2.2m in 2003 to 1.8m by 2013. The number of UK dairy farmers is below 10,000 for the first time and the NFU warns there could be fewer than 5,000 dairy farmers in the UK by 2025. In 2015, the price dairy farmers were paid for milk dropped 16% and led to blockades at processing plants as the industry reached crisis point. Major long-term factors include international oversupply and a supermarket retail price war.



### POLLUTION AND LITTER

Littering remains a bugbear for visitors to the countryside and appears to be getting worse. Serious littering increased by 22% between 2012 and 2014. More than 180,000 sacks of litter are collected from motorways and major 'A' roads every year. Funding for cleaning rural roads was cut by £74m between 2010 and 2014. Air pollution, including particulates from rural diesel vehicles, heating oil and for villages located on busy roads, remains a problem.



# Community Information

**Mobile Library:** First Tuesday each month - In the Lay-by Upwell Road - 12:15 to 12:45pm

## Mobile Post Office:

visits Mon - Thu in the Lay-by Upwell Road  
Monday and Thursday 16:30 to 17:00  
Tuesday and Wednesday 16:10 to 17:00  
Fridays - no service

## Dun Cow Meal Deal

on alternate  
Wednesday lunchtimes - 2 courses for £5.50 -  
Pre-Booked places ONLY.

This month's dates are 10th & 24th Jan

## The Parish Council is purchasing

a defibrillator for the Community Centre.

The total cost is £1914; luckily, we are able to claim back the VAT, bringing the cost down to £1595.

Donations so far are:

Fenland District Council - £500, Cllr Russell - £200

Senior Citizens Club - £300, Dole money donated - £90

Cllr Sutton - £10. Many thanks to everyone that has

pledged/donated - the Parish Council are immensely grateful.

We still need to raise £495 plus the cost of the installation.

The Parish Council would be grateful for any donations from user groups of the Community Centre and individuals to help make up the shortfall.

We're sure that you understand the benefit that having a second defibrillator is to the village, and would be grateful for any donation you can send - no matter the size. All donations will be used solely for the defibrillator - purchase, installation and up-keep. Please contact the clerk to the Parish Council on [christchurchcambspc@gmail.com](mailto:christchurchcambspc@gmail.com) for details of how to donate.

## Community Car Scheme

Angie Hill has very kindly taken over as coordinator for Christchurch. To request a journey could people please contact Angie on 01354 638721, leaving a message if necessary and she will call you back. Wendy has now retired from the car scheme after more than 10 years service and we are very grateful to her for all she has done.

We still need one or two more voluntary drivers in Christchurch. If you are available to help out with occasional journeys how about volunteering for the New Year? Contact Angie on 638721.

## Contact the Parish Council?

phone numbers: in Useful Numbers page 26,

email: [christchurchcambspc@gmail.com](mailto:christchurchcambspc@gmail.com)

website: [christchurchpc.btck.co.uk](http://christchurchpc.btck.co.uk)

**School Defibrillator** - location is on wall of the dining hall in Townley School grounds.

Access via the car park in Greenways off Crown Rd!

**Delicious Fish and Chips** are available

outside the Dun Cow from Michael and Michelle's van on Fridays 5pm to 8pm

## EDITORIAL

It's always a difficult time when things change. Paul and Viv have now sold their house and will be moving in the spring to North Wales. That's two big jobs to fill! But as you will have noticed Elaine, Lewis, and Derek have already joined the team, Alicia Cranwell begins her new column this month, and I am pleased to report that Hazel Crawford, of Syringa House, has now agreed to join us as our proof reader when Viv and Paul go. She is also busy compiling a history of Syringa House. Did you know there used to be a telephone exchange there? We look forward to her article appearing in a future issue of The Heron.

We have always tried to maintain and improve the quality of your community magazine, and to this end we have run several fundraising events over the years. In September 2014 there was "HeronAid"; a concert which raised nearly £400 for us, as well as over £300 for the Friends of Townley School (FOTS) thanks to the marvellous catering. In September 2015 we celebrated the 150th Anniversary of The Old School with a "Hogroast" and raised just under £250 for The Heron. This year the Food Fayre raised just over £100 and enabled us to have four extra colour pages in last month's December issue.

We are lucky to have a 'fantastic' relationship with Steve, our printer, at March Stationary & Print. As a result of working with him to aid the purchase of an additional machine for the shop he was able to offer us the most fantastic deal which enabled us to regularly have four colour pages in the magazine, since February 2016, for a cost of only £8 a month more on top of the usual price! How does he do it?

We thank all our contributors, helpers, and supporters, and hope that all your support will continue over the coming year.

Best wishes to you all for 2018!  
Enjoy! 'Till next month!



# DIARY DATES

Abbreviations for commonly used venues:

TS = Townley School, CCC = Christchurch Community Centre, (new Hall)

TH = Three Holes Village Hall, UH = Upwell Village Hall, WH = Welney Village Hall

## Weekly events

Mondays Pop-Up Coffee Shop - 9 -11:30am - CCC (not 1st Jan)

Pilates - each Monday - 6:30-7:30pm - CCC

Fridays "Cake, Coffee and Chat" - 2-3pm - Parish Church - All Welcome

Fish and Chip Van visits - outside Dun Cow - 5-8pm

## General events

Jan 2<sup>nd</sup> Mobile Library visits - Upwell Rd Lay-by 12:15-12:45pm

Jan 2<sup>nd</sup> Christchurch Craft Club - Bring your own project - 7pm - CCC

Jan 9<sup>th</sup> Art Club - new students welcome - 1:30 - 3:30pm - CCC

Jan 9<sup>th</sup> WI - Quiz Night - 7pm - CCC

Jan 14<sup>th</sup> Welle Cinema - Hampstead - Cert 12a - 2pm - TH

Jan 15<sup>th</sup> Parish Council Meeting - ALL WELCOME - 7:30pm - CCC

Jan 23<sup>rd</sup> Art Club - new students welcome - 1:30 - 3:30pm - CCC

Jan 24<sup>th</sup> Christchurch Book Club - 7:30pm - Glynan, Crown Rd - info 07946 635908

Jan 28<sup>th</sup> Jazz Club - Parisian Swing with Melody Brooker - 12:30pm - CCC

## Wanted! - Help with the Heron:

Do you have skills with Microsoft Publisher? Could you volunteer a few hours a month to help put the Heron together? You would join a small team trying to maintain a high quality local magazine against all the odds. Call the Editor on 01354 638990 for a chat

## Parish Church Services

Jan 7 <sup>th</sup>	11am	A Day	All Age Worship
Jan 14 <sup>th</sup>	9:30am	Rev I Brady, A Carlin	Holy Communion
Jan 21 <sup>st</sup>	3:30pm	Rev I Brady	Evening Prayer
Jan 28 <sup>th</sup>	11am	Rev L Brady, R Holding	Morning Prayer/Baptism
Feb 4 <sup>th</sup>	11am	Rev L Brady, A Day	All Age Worship

**Every Friday** 2-3pm Coffee, Cake and Chat in the Church building

**We had to cancel** our service on 10th December, due to the snow, we tried to contact people but apologies if we missed anyone. Daphne and Andrew.

## The Heron Deadline

The 25th of the previous month is the deadline for all copy. However, due to the amount of copy we are getting, if you leave it till then, we may not have space. So - AS EARLY AS YOU CAN PLEASE

**Advertisers** - all our advert rates and conditions can be found on our website [www.theheron.info](http://www.theheron.info)  
Business advertisers can book series of six or 12 adverts, paid in advance. Adverts for village fundraising events, personal announcements, or small private ads are usually free.

**At the time of going to press, all information is as accurate and up to date as we can make it. Changes and updates may be published subsequently. All information contributed by outside agencies, including dates etc., will be assumed to be correct.**

NB as a matter of courtesy no content from the Heron should be used without prior permission



## Letters to the Editor



Dear Richard,

The Parish Council would like to thank the Parishioners who donated their parish dole money to the defibrillator appeal.

The Parish Council are immensely grateful for these contributions and your generosity.

Kind regards

Jane Rees

Clerk to Christchurch Parish Council

Dear Mr Guilford,

I hope you are well.

I am writing to show my interest in the advertisement for a content writer/columnist on the Heron youth page found in the December issue delivered today.

I am passionate about fashion and thought it might be a welcomed novelty to have a fashion column in the magazine which could potentially inspire youths in the community to follow their dreams, find new interests and maybe continue their studies at school/college and beyond. I currently have a blog, but whilst I have numerous ideas and keep on top of fashion trends almost daily, I lack the pressure of deadlines. The link to this is [dolcebrilliant.wordpress.com](http://dolcebrilliant.wordpress.com) if you wish to see my content and style. I feel it would also be interesting to be able to grow my network through exposure with the Heron (you will see from some of my posts that I enjoy discovering and promoting fresh, young talent) and to do so with local talent in the Heron.

I propose a column that will give an essential rundown on current trends in the industry, content about studies and ways of getting into the industry as I am currently making my own way there. As previously mentioned, if I do discover new local talent, it would be encouraging and beneficial to them if I could write about their work too.

For me the fashion industry is more than materialism. It is an amalgam of culture, ethnicity, innovation and history, and it reflects current society and politics. It's a way of learning more about the world, as well as offering the opportunity to express oneself.

Please let me know your thoughts, any advice or suggestions are welcome.

I look forward to hearing from you.

Kind Regards,

Alicia Cranwell

*You can read Alicia's new column on page 13*

## Pop-up Café and Coffee Shop

**Reopens!**  
Pop along & have a cuppa!  
Sausage, bacon and egg rolls using  
local sourced meat and our own  
free range eggs and home baked  
rolls.

**Every Monday Morning  
from 9 - 11.30am  
Christchurch Community Centre**

**Coffee, Tea, Hot Chocolate, Squash,  
Biscuits and Homemade Cakes and  
Cookies.**

**Pop along for a cuppa and a chat.**

**All welcome.**

**We look forward to seeing you.**

Dear Richard

In view of the political nature of an earlier cartoon, a man wishing to have his vote back, may I describe another? A man walks, smiling, past a hoarding that says, this time, "Brexit! We have taken our country back!"

To describe the vote as 'populist' is to despise the ordinary people, as we are known to a few politicians and journalists, who also look pretty ordinary to the rest of us. The vote was democratic, open to all. The EU backlash is twofold. First, although Britain is a relatively small country, with public resources already failing, economic migration continues from the poorer areas of the EU. Secondly, the economic crisis will make people struggling with shortages think that it is the fault of Brexit, but poverty existed long before, despite government promises. We must stay firm in our resolve. Freedom has always walked a tightrope - when it hasn't been the plank!

A.P. Hutchins

## Weather Lore

by your Local Weather Sage

*It was a cold and stormy night, the snow lay on the ground,*

*"Tell us a tale, John," the chief of the robbers said,*

*And thus the tale began -*

*"It was a cold and stormy night..."*



## The Joan Smith Column

LIFELINE 24

Hello everyone!

Hope you have all had a nice Christmas and that the New Year will bring us all good health. If we can have our health we have

everything. The last six months of 2017 have been rather a tough time for me. I have spent time between the Doctors and Q.E.H. I am still struggling with problems and have to visit both regularly. At the moment I have a dreadful cough, though no cold at present, but, I am hoping this will soon go away, so by the time February's Heron comes around I will be fitter again and better able to write something of more interest. As if that wasn't enough last Monday (11th December) I fell whilst getting out of bed and split my head open quite badly. I know that Richard was shocked when he saw me today (Wednesday 20th) and told me off for not calling anybody! I think he may have something to say about this alongside. I must admit, I did find it quite a struggle to get myself up off the floor, and was more than a little dazed for some while afterwards. Anyway, enough of my troubles, talk to you again next month.

As you may imagine I was somewhat concerned over Joan's fall, and especially the fact that she didn't call anyone to assist her! I politely told her off and emphasised that she should use the Lifeline 24 service which only costs £119 per year. A small price to pay for your safety and security I'm sure you'll agree, especially if you live alone. The Lifeline alarm service is made up of two parts: Lifeline Vi Alarm base unit and the MyAmie Pendant. Once your alarm unit has been installed, you can choose to wear the MyAmie Pendant on an elasticated strap around your wrist or around your neck as a necklace. The pendant can be worn at all times, including in the bath or shower, as it is waterproof. Your pendant will also work outside in the garden, as it has a range of up to 100 metres.

Currently they have a special offer on where you can have your first three months of service FREE.

For further information contact [www.lifeline24.co.uk](http://www.lifeline24.co.uk) telephone 0800 999 0400, or email [info@lifeline24.co.uk](mailto:info@lifeline24.co.uk)

Remember all weblinks are active in the online Heron go to [www.theheron.info](http://www.theheron.info)

RWBG



MOBILE CATERING

***Freshly cooked fish & chips, sausages, chicken and pies.***

**Every Friday at the Dun Cow from 5.00 'til 8.00 pm.**

**Call 07756 170 700**

to book us for your party, function or fund raiser.



## The Environment Quiz Elaine Reed-Hughes

1. Which part of the atmosphere screens out the harmful radiation from the sun?
2. Which 1974 English Act of Parliament was designed to protect the Environment?
3. What gas emitted by power stations causes acid rain?
4. What is the term used for something that will break down naturally?
5. What cancer causing chemical is found in unleaded petrol?
6. What is the term used to describe renewable ecologically safe sources of energy?
7. What is the name of the device fitted to car exhausts to reduce pollution?
8. What is the term used for pest control by natural predators?
9. What nitrogen containing chemical in artificial fertilisers can cause pollution?
10. What is the term for the complete disappearance of a species?

Answers page 25

# A View from the Parish Council Meeting – 11 December 2017

Richard Lloyd was co-opted onto the Parish Council as new Councillor. Welcome Cllr. Lloyd and thank you for giving your time and help.

The Parish Council are purchasing a defibrillator for the Community Centre. Money raised so far is from Fenland District Council, Cllr. Russell, Senior Citizens Club, individuals donating their dole money and Cllr Sutton. The Parish Council are extremely grateful for these donations. Request for further donations to be put in the Heron.

Signs are to be installed on the bus shelter and shipping container to try and deter children from climbing on them. These structures have weak roofs and should not be used to play on. Please remind your children.

The Parish Council have been working hard on finding a solution for the lack of village transport. They had reached agreement for a weekly service with West Norfolk Community Transport. However, this has had to be put on hold due to countrywide problems with the whole Community Transport provision. The Parish Council will continue to keep in contact with West Norfolk Community Transport and hope to be able to resurrect the plan in the future.

Tipps End speed reduction plan is progressing slowly. Parish Councillors recently delivered letters on behalf of Cambridgeshire County Council making residents

aware of the plan.

It is time for the Parish Council to set its budget for 2018/19. Fenland District Council have warned that the Parish Council will become responsible for the cost of all repairs and energy costs for the streetlights, probably from April 2018. This is estimated to be in the region of £2500. The Parish Council have reviewed the budget and feel the main way that this cost can be covered is through an increase in the precept. The Parish Council understands that these are difficult times for everyone and have looked for alternatives, but have been unable to find sufficient savings to cover this massive bill.

Footpaths were also discussed – specifically to try and determine whether a historically walked route is actually a right of way. Do you know that rights of way are noted on the Definitive Map? This is held by Fenland District Council. Anything not marked on this is not a formal right of way. Also, the general problem of rights of way was discussed – they enable hare coursers and other criminals easy access to the countryside. Its good to have rights of way, but also we have to be aware that they can pose a threat to security of property and our beautiful countryside.

The next meeting will be held on the 15 January 2018, 7.30pm at the Community Centre. Everyone is welcome.

## Upwell Jazz Club 2018

Christchurch Community Centre (Sat Nav PE14 9LL)



The UK's first  
guaranteed  
banjo-free  
jazz club

### Sunday 28th January

Parisian Swing with Melody Brooker (vocals)

*Parisian Swing are back, once again, by popular demand.*

*Music from the era of the Hot Club of France (Django Reinhardt and Stephane Grappelli) will fill the hall. Iconic tunes from the era along with more recent melodies.*

*Always a popular morning, come early to avoid disappointment.*

**Time: 12.30pm - 2.45pm**

**Admission: £6.50 Accompanied under-16s Free**

**Bar, fresh rolls, crisps and savouries available**

**More information from Nigel Smith on 01945 773121**



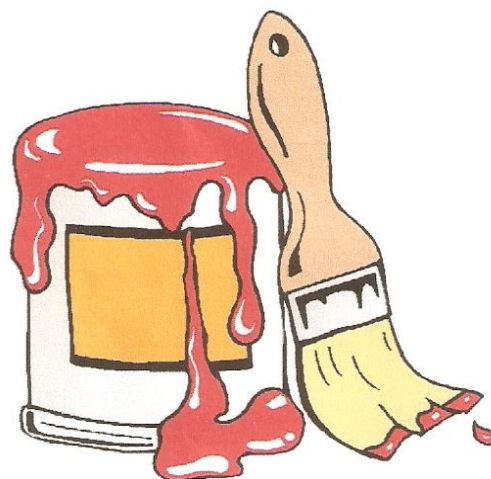
**L.W Vehicle Services**  
**Car & Commercial repairs**



Est 2003

- ~ Electrical and Mechanical Diagnostics and Repairs
- ~ MOT Preparation & Testing
- ~ Servicing and Inspections
- ~ On Site Service
- ~ Breakdown / Recovery Service
- ~ Van and Car Sales

Contact Lee on 07717 738796 Or Tel 01354 610172  
March Road, Welney



**S & H Painters and Decorators**

Tel : 01354 638124

Mob: 07905145680

Steven Horne

Christchurch, Cambridgeshire

**P R PARKER**

Established 1978

**General Building and Maintenance**

CARPENTRY	REFURBISHMENT	GLAZING
PLUMBING	AND	PAINTING
PLASTERING	RENOVATION	DECORATING
BRICKLAYING		RENDERING
ROOFING	01354 638380	GUTTERING

**FREE ESTIMATES**

**All Types - Houses - Flats - Shops - Offices**

# A.R. CLINGO

## FUNERAL DIRECTOR

Family Independent  
Business

Private Chapel of Rest

Personal Attention

24 Hour Service

*Full estimates given at all times*

Golden Charter  
Funeral Plans



Pinfold House  
St. Peter's Road  
Upwell, Wisbech  
Phone 01945 772502

## BUILDING DECONSTRUCTION

Buildings bought and all materials recycled/  
upcycled

Pre 1930s preferred  
but all buildings considered  
from barns to cottages  
including site clearance

FREE QUOTATIONS GIVEN

We have a large number of salvaged  
ARCHITECTURAL ITEMS FOR SALE  
Bricks & other building materials,  
roof trusses etc.

Firewood, plants, and hanging baskets  
COME IN AND SEE US  
AND HAVE A BROWSE!

Call Matt or Sarah Lawrence on  
Tel: 01354 638977 or, Mobile: 07856 291787  
Toll Farm, Ha-Penny Toll Road,  
Three Holes, Norfolk,  
PE14 9LJ  
Email: [buildingdeconstruction@yahoo.com](mailto:buildingdeconstruction@yahoo.com)

## CHRISTCHURCH ELECTRICAL

Simon Freeland Hill Farm, 3 Church  
Road, Christchurch, PE14 9PQ

Tel: 01354 638802    Mobile: 07727 046439



Domestic electrical work undertaken.  
No job too small.  
Free quotations / estimates.



[www.electricalcompetentperson.co.uk](http://www.electricalcompetentperson.co.uk)

[www.electricalsafetyregister.com](http://www.electricalsafetyregister.com)



March Stationery & Print

Booklet Printing  
Business Cards  
Digital Photos  
Leaflets  
Newsletters  
Banners

**01354 656614**

[sales@marchsp.co.uk](mailto:sales@marchsp.co.uk)

5 Fenland Walk, March, PE15 8TW



Our president welcomed us all. Apologies were received from Doris (Ted) Rolfe, Doris (Wolsey) Rolfe, Belinda Gladwin, Alma Hughes, and Sylvia Wilcox.



The evening commenced with our entertainment by the "Upwood Ukulele Band". It was a fun-packed evening with members joining in with the carols and 3 members joined the band dressed as hula hula dancers with all the actions! It was a wonderful way to end the year. Since the band have been together



they have raised over £17,000 for the Air Ambulance. Beryl thanked them for coming and then we all enjoyed savoury nibbles and homemade mince pies with our teas and coffees.



Then followed the AGM and an election of officers for 2018—overseen by Patricia Ashmore (WI Membership

Chairman and Denman Ambassador). Beryl Brooks was elected to stand again as President, Ann Hicks joins the committee and is the new Secretary and Peggy Warby is Treasurer.

Beryl thanked Patricia for coming and presented her with a small gift of appreciation.

Competition—"My Favourite Joke or Saying"

5pts—Sue Norman

4pts—Ann Hicks

3pts—Kay Miller & Anne Atkinson

2pts—Peggy Warby

1pt—Val Parker

Raffle—Margaret Sparrow, Tracy Day, Sandra Lloyd, Beryl Brooks, Sandra Kay, Anne Atkinson and Peggy Warby.

The January meeting—WI Subs to be paid—£41 for 2018.

Quiz Night

Competition—"My Favourite Christmas Card"

Flowers—Peggy

Refreshments and Raffle Rota will be decided after the Committee meeting on 3rd January.

December's meeting was tinged with excitement as a few minutes into the session, Sandra Lloyd received news that she, and her husband Richard, had become first time grandparents. Charlotte Grace was being born in a Bristol hospital while Nanny was at Craft Club!

Charlotte arrived weighing in at 7lb 10oz.

Huge congratulations to Nanny and Grandad and, of course, the proud parents David and Ellie.



Getting back to the session, we all made a simple felt mouse Christmas Tree decoration complete with candy cane before enjoying some festive nibbles with our usual cuppa!

January's session will be a bring your own project session and a chance to catch up on what you have all been doing over the festive period.

Look forward to seeing you all on **2nd January**.

New members welcome. Call Wendy on 01354 638448

## Art Club

First session of the New Year will be on **9<sup>th</sup> January** where will have a quick recap. Pen and Wash.



Please bring along either a picture/photo or object.

Next session after that will be on **23<sup>rd</sup> January** where we will be **Charcoal Drawing**.

Please bring charcoal (if you have any) and I will bring mine. Plus a simple object to draw, an ideal object is one that can reflect light. I will bring some too.

Jan Clifford  
01354 638217



## "I wouldn't want that Electricity Bill"

Saturday 2<sup>nd</sup> December arrived with a chill but thankfully it was not freezing when, that evening, the Gardening Club members visited Anglesey Abbey for the Winter Lights. When the tickets were purchased earlier in the year they sold out within hours, so we were prepared for the sheer number of people visiting on this occasion. As we began the walk around the gardens the crowd slowly thinned out as our little group made its way through the various light shows illuminating trees and bushes. Several mobiles were hung from the branches taking the shape of birds and lanterns, all made from old cut up plastic milk cartons. The most stunning light show we all agreed was near the mill stream where lights were shone upwards on a stand of Birch trees. Standing in the dark, looking across the water, it was very atmospheric. Food of a decent quality was served (although we all agreed the menu was a little odd) in a clearing where two stages had been set up. One stage was occupied by a folk band trying desperately to keep warm, while the other was given over to a kind of marionette shadow show.

Towards the end of the walk, which took a couple of hours, we arrived outside the Abbey which was resplendent under the beams of light directed up at its façade.

The Abbey was never really used as an Abbey but rather as the Hospital of St Mary founded by Henry I in 1135. In the early thirteenth century, it became a priory of Augustinians. Monastic life continued unabated until Henry VIII dissolved the monasteries in 1536. At this time the Abbey was gifted to lawyer John Hynde who used it as a source of building materials for the mansion he was building at Madingley Hall, leaving the building virtually derelict.

The sad wrecked building then came into the ownership of the Fowke's Family in 1596 who converted what was left of the Monastery into a stable block in 1609. It's thought the name of the property was

changed to Anglesey Abbey by the Reverend John Hailstone in 1848.

Lord Fairhaven bought the Abbey in 1926, sight unseen and re-built the house putting many of the Jacobean features back, using the service wing for a Library. When Lord Fairhaven died in 1966 the Abbey came into the ownership of the National Trust who have looked after the property ever since.

To say it was an illuminating evening would be an understatement. The feedback from our members was entirely positive.

There is no meeting in January and the next meeting is the AGM on Tuesday 20<sup>th</sup> February 2018.

For more information or to join call 01354 638230

Steve.

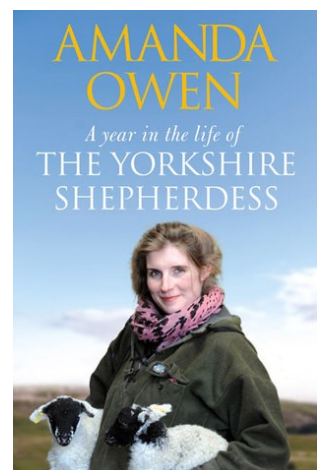


## Christchurch Book Club

Book Club met on 20<sup>th</sup> December. We had been reading 'The Circle' by Dave Eggers. Most of us enjoyed the book and found it a rather disturbing reflection of modern life.

We meet again on 24<sup>th</sup> January at 7.30pm at Viv's, Glynan, Crown Road when we will be discussing 'A Year in the Life of a Yorkshire Shepherdess' by Amanda Owen.

New members always welcome. Contact Sheila Day on 07946635908 for more information.





## Fashion

Check out our new 'Heron fashion column' on the right giving you insights into fashion labels, offering style guides and help with how to make it in fashion.

## Wicken Fen Nature Reserve

The National Trust's oldest nature reserve, and England's most famous fen. A great place to head to at weekends and school holidays. 40 minutes drive.

### Cycling at Wicken Fen

Explore the Cambridgeshire Fens on two or three wheels. Enjoy an easy family ride, off-road adventure or take the Lodes Way to Anglesey Abbey. Cycle hire open daily, Easter to October (upon request at other times) 10am - 5pm.



### Wild camping

Hike or cycle to our remote wild campsite and enjoy a night under our vast fenland skies. There's four open fronted shelters, fire pit and eco-toilet. It's very basic but great fun!



### Geocaching

Geocaching is a high tech form of 'hide and seek' using GPS to find the hidden caches. Turn a walk into a family adventure searching for the twelve secret geocaches we've hidden across the nature reserve. Each geocache contains a signing-in book and a wildlife themed or similar activity. You can download the co-ordinates to a smartphone or GPS receiver from [www.geocaching.com](http://www.geocaching.com) or borrow a pre-loaded receiver from the Visitor Centre or Cycle Hire building.

For beginners we have a basic introductory trail featuring three geocaches. The trail is 3 miles and will take around 1.5 hours to complete. Finding a geocache is No.49 on our list of 50 Things to do before you're 11¾. You can collect your 50 Things scrapbook from the Visitor Centre. Don't forget to collect a geocaching sticker for your scrapbook before you leave.



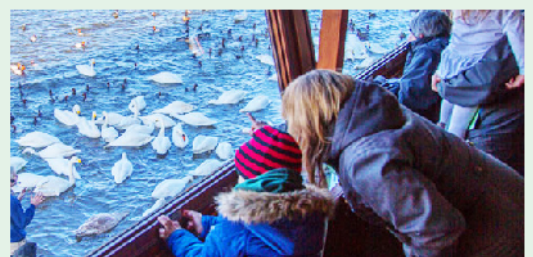
Check out their website for more news and what's on through the year.

[www.nationaltrust.org.uk/wicken-fen-nature-reserve](http://www.nationaltrust.org.uk/wicken-fen-nature-reserve)

## WWT Welney Wetland Centre Swan Spectacular

Find out about our winter visitors from the live commentary that accompanies the feed. Enjoy watching the birds from the comfort of the centrally heated hide and get the chance to ask questions. Don't miss the flight in each day at dusk, when the swans return from the fields they have been feeding in during the day.

Feed times: **12pm** swan feeds (Daily from Boxing Day, Tues 26 Dec)  
**3.30pm** swan feeds  
**6.30pm** swan feeds.



Please note: Booking not required unless you are bringing 12 or more people





Alicia (Liss) Cranwell

# FASHION

MODEL TRENDY ELEGANCE  
STYLE VOGUE BEAUTY GLAMOUR

Fanatical about fashion? Perfect, because you have just found yourself reading your new Heron fashion column. I'm Liss, a graduate of the University of Nottingham in French and English and fashion really is my passion. I'll be giving you insights into fashion labels, offering style guides, help with how to make it in fashion and I'd love to help any aspiring fashion designers to gain publicity. I have been designing since I was about 7 years old, and to be perfectly honest, before I could draw anything properly, but I persevered. My little eureka moment came when I was sitting my GCSEs. CWA and surrounding colleges had a competition that my textiles teacher informed us about, I was desperate to give it a shot. With numerous pages in my sketch pad filled with ideas, I returned to my teacher with my favourite two designs and she gave me the green light to turn one into a fully-fledged fashion illustration and entered me into the competition. When the results came in, I had been placed among the top 10 finalists and was quite frankly elated with my success. I was invited to watch the CWA fashion show and was truly inspired by the work their students were producing. From there, I have continued to design and draw, as well as start a blog and collaborate with up-and-coming young designers who wish to gain publicity. I am now in the midst of interviews for my dream career in the luxury fashion industry.

I'd like to give you all an insight into why I love fashion because so often we hear the cliché that I have used above "a passion for fashion" and interpret it with often negative connotations. I don't share the passion in the narrowed sense that people may expect. As a lover of many things, (and I mean that when I say it, I have hobbies ranging from

the dramatic arts and figure skating to rugby and hockey and to history and linguistics), I am fascinated by the way that fashion is an amalgamation of such a broad spectrum of influences: history, art, society, culture, and so on. It brings colours, textures and expression together in interesting and diverse ways. It also reflects the development of technology, current affairs and general society. To me, fashion is far more than material, it's what makes the final piece that gives it its importance. Fashion may be forever changing but if you look into the history of the brand, the making of the collection, you'll find innovation and an abundance of influences which culminate in the work of art that parades the catwalk.

Fashion is an extremely fast-paced industry that is ever-evolving with the times, it has grown from luxury boutiques in Paris during the 18th Century in the courts of Louis XIV, to extremely profitable business conglomerates that make their money from RTW (ready to wear) apparel and accessories. This has meant that the luxury brand is no longer crafted by individual fashion houses ("maisons") but is mass-produced in factories. High end fashion ("haute couture") is handmade and can cost anywhere between \$10,000 and \$10,000,000, but it is very rarely profitable. Next month I will discuss some of the luxury industry leaders and how they came to be so iconic, looking at history, business and design.





## NEW TOWNS AND HOUSING

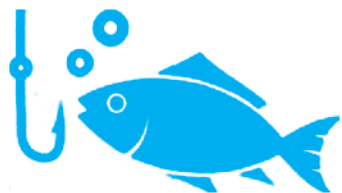
# 153,330

New homes built in the first six months of 2017

House building has risen significantly in recent years. In the sixth months to June 2017, new homes totalled 153,330, up 11% on last year. This is 141% above the slump of March 2009 but still 16% below the 2007 peak. Supporters say development is essential to provide affordable homes for rural families and inject new life into the countryside. The Campaign to Protect Rural England says it is unnecessary to build on green belt land while so much brownfield land remains unused.

## BADGER CULL

The most emotive and controversial issue of the past decade. Bovine tuberculosis (b TB) is an infectious disease of cattle that has devastated thousands of farming businesses, and badgers are believed to be partly to blame for spreading it. Badger culls started in 2013 in Gloucester and Somerset amid much opposition. In 2017, the Government announced further culls in 11 new areas including Cheshire, Wiltshire and Devon. The culls have been described as “ineffective and inhumane” by the Government’s own advisers and there is much ongoing argument over the scientific basis for the cull.



## FISHING

Some stocks are rebounding after decades of over-fishing. Management measures mean it’s possible to eat many species with a clear conscience (with 20,000 Marine Stewardship Council labelled products – North Sea cod recently joined the list for the first time in 20 years). The fishing industry has endured large-scale decommissioning; in 2015 the value of landings was 11% lower than 1994. There are 12,000 fishermen, down from 20,000 in the mid-1990s.

## BREXIT

The great unknown. A majority of the farming and fishing industry voted for Brexit and, while these sectors have been assured that subsidies will continue in the short-term, the future promises a radical shake-up in how payments are issued. The sector’s dependence on seasonal migrant labour will also have to be unpicked. Environmental groups cautiously see the opportunity that Brexit may bring for more wildlife-friendly funding and management but are wary that the many EU protections, such as the Habitats Directive and on water quality, may be watered down.





## WIND FARMS

Nothing polarises opinions more than a wind farm. In 2008 wind contributed just 1.5% of UK electricity generation compared with 11% in 2015. In 2016, wind generated more electricity in the UK than coal power plants for the first time. Improved technology and the economies of scale are making offshore wind more competitive: in the medium-term, along with developments in solar, tidal and wave energy, this is likely to ease pressure for onshore wind turbines in beautiful places. Strong opposition remains.



# 11%

of UK electricity came from wind power in 2015



Subsidies to rural bus routes reduced by

# £78m

## TRANSPORT

Subsidies to rural bus routes have been reduced by £78m since 2010, creating problems for low-paid workers and contributing to the isolation felt by many villagers. In 2013 the Government admitted that just 37% of rural residents without a car could make necessary journeys within reasonable time. Increasingly, authorities and communities run post-bus type services and fund schemes to provide young people with mopeds to reach work.

## RAPTOR PERSECUTION

Many raptors, most notably hen harriers, are targeted for persecution. Wildlife groups blame managed shooting estates that believe the raptors take their quarry; the National Gamekeepers' Organisation says a range of factors is responsible. The figures are disturbing: breeding pairs of hen harriers in England dropped from 12 in 2010 to 4 in 2016. In 2008 the RSPB documented 210 reports of shooting, trapping and destruction of birds of prey and 133 poisonings; in 2015 it reported 196 such incidents.



# 4

The number of breeding pairs of hen harriers left in England

Continued on page 16



## Work is holy irreplaceable

CHURCHES do community work worth £1 billion a year, a survey found.

Volunteers give 114 million hours to projects such as helping the elderly, tackling homelessness and running foodbanks, insurer Ecclesiastical said.

But it found 75% of people asked could not name any church activity other than regular services and festivals.

Director Michael Angell said: "The value and reach of work is on a scale almost impossible to replace."



Some of you may have heard of the Pacific Gyre. Its effects have been featured recently on Blue Planet II. For the uninitiated a gyre is a complex spiralling of ocean currents the results of which are to carry debris, most notably plastics, to a central point. Apart from larger pieces of plastic bags and the like choking sea creatures, including birds like the giant albatross whose numbers have been falling rapidly in recent years, sharper pieces such as toothpicks or harder broken pieces have been known to pierce internal organs leading to a painful death. Even so called biodegradable plastics create 'microplastic globules' which become more and more concentrated as they become ingested further up the food chain by larger and larger creatures; again leading to death. We need to clean up our act! 4Ocean is an organisation which is helping the world to do so.

1.4 billion pounds of trash enters the world's oceans every year. 4Ocean supporters have so far been responsible for 231,962 pounds of trash and marine

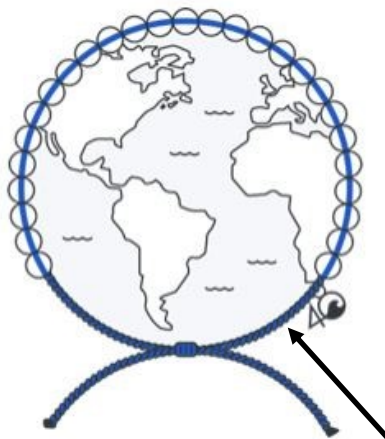
### BEACH CLEANUPS

Our team stops ocean pollution by removing trash from coastlines before it has a chance to end up in the ocean.



### OFFSHORE CLEANUPS

We have full-time captains and crews actively cleaning our ocean and intracoastal waterways seven days a week.



Bracelet style

### WORLDWIDE CLEANUPS

To make the greatest impact possible and to clean up our ocean faster, we involve thousands of people from around the world.

debris being removed from our oceans and coastlines around the world. By purchasing a 4Ocean bracelet you can help this global effort. Each bracelet purchased equates to a pound of debris being removed from the world's oceans and coastlines. Not only that but those very bracelets are made from the very same plastics being recycled. The bracelets are very attractive as you will see. Should you decide to become a collector you could receive a different bracelet for every month of the year! Please go to the 4Ocean website for further details!

<https://4ocean.com>

**BEACH CLEANUPS** – 4Ocean teams stop ocean pollution by removing trash from coastlines before it has a chance to end up in the ocean.

**OFFSHORE CLEANUPS** – 4Ocean have full-time captains and crews actively cleaning our ocean and intracoastal waterways seven days a week.

**WORLDWIDE CLEANUPS** - To make the greatest impact possible and to clean up our oceans faster, 4Ocean involve thousands of people from around the world.



# CHRISTMAS LEFTOVERS RECIPES

## TURKEY

There are loads of uses for leftover turkey – from soups to sandwiches to stir-fries – but one guaranteed way to turn it into a real crowd pleaser is to whip up a beautiful, comforting pie. This one combines turkey with sweet leeks and chestnuts – it's the kind of gentle comfort food that makes this time of year so special. Feel free to throw in any leftover roast ham, too. This comforting pie with homemade gravy turns leftover turkey meat into a real crowd pleaser.

### Ingredients

- 2 rashers smoked streaky bacon , roughly chopped
- ½ bunch fresh thyme , leaves picked
- olive oil
- 2 kg leeks , washed, trimmed and chopped into chunks,
- sea salt
- freshly ground black pepper
- 800 g cooked white turkey meat , torn into big chunks
- 2 heaped tablespoons plain flour , plus extra for dusting
- 2 pints organic turkey, chicken or vegetable stock
- 2 tablespoons crème fraîche
- 500 g puff pastry
- 12 jarred or vac-packed chestnuts , roasted and peeled
- 2 sprigs of fresh sage , leaves picked
- 1 free-range egg , beaten



1. For this recipe, you will need 800 g cooked white (and or brown) turkey meat (and or ham), torn into big chunks. An old-school pie.
2. Preheat your oven to 190°C/375°F/gas 5. Put your bacon in a large pan on a medium heat and add your thyme leaves. Add a lug of olive oil and let it all fry off a few minutes. Add all of your prepped leeks and fry them off for about 3 minutes. Add a pinch of salt and pepper then pop the lid on top, turn the heat down to medium and let them cook away gently for 30 minutes, stirring every 5 to 10 minutes to make sure they don't catch. There's going to be enough moisture in the leeks to keep them happy in the pan so they should be soft and melt in your mouth once they're done.
3. When your leeks are ready, add the turkey meat to them and stir. If you've got a bit of spare stuffing you can put that in too. Add the flour, mix it in well then pour in your stock and stir again. Add the

crème fraîche then turn the heat up and bring everything back up to the boil. Have a taste and add a bit more salt and pepper if it needs it then turn the heat off. Pour the mixture through a sieve over another large empty pan and let the wonderful gravy from the mixture drip into the pan while you roll out your pastry.

4. Get a deep baking dish roughly 22 x 30cm. Dust a clean surface and a rolling pin with a bit of flour and roll your pastry out so it's about double the size of your dish. Crumble the chestnuts over one half of the pastry then tear a few of the sage leaves over the chestnuts. Fold the other half of pastry on top then roll it out carefully and evenly so you have a rectangle big enough to cover your baking tray. Don't worry if a few bits stick out here and there.
5. Spoon that thick leek mixture from your sieve into the pie dish and spread it out evenly. Lay your pastry on top, tuck the ends under then gently score the pastry diagonally with your knife. Add a pinch of salt to your beaten egg then paint this egg wash over the top of your pastry. Pop your pie in the oven for about 35 to 40 minutes or until the pastry is puffed up and golden brown. When the pie is ready, re-heat the lovely gravy and serve with your pie, along with some peas tossed in butter, lemon, salt and pepper and everyone's happy!

## CHEESE AND LEFT OVER VEG

### Ingredients

- 250 g leftover cooked Brussels sprouts
  - 2 handfuls of leftover cooked greens , (100g)
  - 1/2 a clove of garlic
  - 1 lemon
  - a few sprigs of fresh dill
  - 50 g leftover cheese
  - 3 large free-range eggs
  - oil , for frying
1. Shred the leftover cooked sprouts and greens. Peel and finely chop the garlic, and finely grate the lemon zest. Pick and finely chop the dill.
  2. Put the shredded sprouts and greens into a bowl. Crumble in the cheese and add the garlic, dill and lemon zest. Add a good pinch of sea salt and black pepper, then mix well.
  3. Crack in the eggs and mix to combine.
  4. Place a large frying pan over a medium heat and add a generous lug of oil. Once the oil is hot, carefully lower in heaped tablespoons of the mixture and flatten them out into little patties.
  5. Fry for 2 to 3 minutes, or until the egg is beginning to set, then carefully flip and fry on the other side for 2 more minutes, until the egg is completely cooked.
  6. Halve and serve the lemon on the side for squeezing over.

# CAMBRIDGESHIRE FIRE AND RESCUE SERVICE

## Have you got a Home Escape plan?

### Planning ahead

- ◆ It's important everyone in your home (including children and the elderly) is involved in putting together the escape plan.
- ◆ Everyone should know where the window and door keys are.
- ◆ Your normal way out of the house is your best escape route so always keep it clear of clutter - think of the difficulties you'll have using this route in pitch darkness or smoke.
- ◆ Walk your escape route with the rest of your family or housemates and make sure everyone can open windows and doors easily.
- ◆ Always choose a second escape route, in case the first one is blocked.
- ◆ Review your escape route regularly to take into account any changes in your home.



### What to do in a fire

- ◆ Keep calm and act quickly - tell everyone to get out of your home.
- ◆ Seconds count so don't waste time investigating or rescuing valuables.
- ◆ Before opening a door, check it first by using the back of your hand. If it's warm, don't open it!
- ◆ When moving through the home, remember to shut doors behind you to help contain the fire.



Removals & House Clearance  
Garages, Sheds & Attics Emptied  
Single Items to Full House  
Antiques & Modern Taken  
Light Removals  
Valuations Given  
Best Cash Prices Paid

THE GRANARY STUDIO  
Christchurch

Contemporary pictures  
and bespoke framing

01354 638614  
tgs@granarystudio.uk  
www.granarystudio.uk

Call for no obligation quote

**01354 638178**





## TOWNLEY SCHOOL AND PRE-SCHOOL

Christchurch, Wisbech, Cambs. PE14 9NA

Email: [office@townley.cambs.sch.uk](mailto:office@townley.cambs.sch.uk)

Website: [www.townleyschool.org.uk](http://www.townleyschool.org.uk)

Tel/Fax: 01354 638229



We held our annual Christingle in the parish church, it is possibly the most beautiful event in the Townley calendar. If you have never been to a Christingle service you should try to join us in 2018 for ours. The event is well supported, with almost every child and their family returning for the evening service. We are very grateful to Daphne and Rev Brady for enabling us to use the church.

Our Christmas play 'Children of the World' taught us about different Christmas traditions around the world. There are lots of photographs on our website.



We had a fantastic end of term, Friends of Townley School took over for the day arranging a party day for everyone and even a visit from Father Christmas. We had one of the nicest Christmas lunches ever thanks to our lovely new kitchen and dining hall, FOTS even provided crackers for us!

### Diary Dates

24th–26th January -Year 5 and 6 Residential to Burwell House

**Thank you for supporting us during 2017.  
Wishing you all a very Happy New Year!**



Maximise the enjoyment of  
your home  
with the professional help of

## **Brimstone**

Garden Design Services

in association with

## **SFC Services**

Design Development Maintenance  
Hard and Soft Landscaping  
Household Repairs and Building Maintenance

for free estimates, contact either

Cliff 01354 638217 or 078 080 78518

cliff@brimstonegardendesign.com

or

Steve 01354 638964 or 07725 866445

sfclifford67@gmail.com

## *Creative Cakes* *by Karen*

Locally made  
Bespoke cakes & cupcakes for  
all occasions - made to order  
Including gluten free and  
lactose free  
Delivered locally

contact for designs & prices

01354 638763 - 07939470027



creative cakes by Karen



Paul Braybrooke

## *Oil Fired Boiler Engineer*

Boiler Servicing & Breakdown Service

Commissions  
Tank Replacements

Phone 01353 777788  
07946 735691



## J. Mallett Carpentry

All types of carpentry work undertaken including doors, laminate flooring, kitchens.

Contact Jonathan Mallett

t. 01354 638656

m. 07581 368725

jmallettcarpentry@hotmail.co.uk

[www.facebook.com/jmallettcarpentry](http://www.facebook.com/jmallettcarpentry)

[www.tackk.com/jmallettcarpentry](http://www.tackk.com/jmallettcarpentry)

## BRIAN TWEED & SON LTD

Family Butcher  
Town Street, Upwell.

**Tel: 01945 773248**

Fresh beef, pork, lamb and poultry.  
Our specialities are home made  
sausages and burgers.  
Home cooked ham, roast beef,  
roast pork and haslets.

## SANDRA KAY

SOFT FURNISHINGS & CURTAINS

HAND MADE (your own fabrics)

01354 638478

## Upwell Computer Repairs

Virus Removal - Upgrades - System Service -  
New Machine setups - Wireless setups -  
Printer setups - Call out repairs

Phone - 01945 772717/07849 778525

E-mail - [upwellcomputerrepairs@gmail.com](mailto:upwellcomputerrepairs@gmail.com)

## A JONES & SON

TELEVISION SALES/REPAIRS/INSTALLATION

FREE LOCAL DELIVERY

FIRST CLASS AERIAL INSTALLATIONS/ADDITIONAL POINTS

26 March Road, Wimblington, March, Cambs PE15 0RN

Tel: 01354 740320

CLOSED ALL DAY TUESDAYS

## Beauty Treatments

By  
**Jane**

**N.V.Q. – i.b.d. – Babtac**

LCN Microdermabrasion Facials  
NEW Oxygen regeneration Facials - less  
outlay than Botox (a celebrity favourite)  
NEW Non-surgical firming lift and tone  
St.Tropez Spray tanning  
Gel pedicures  
Shellac manicures  
Week-end & semi permanent  
eyelashes

Rose Cottage,  
Christchurch  
Telephone: 01354 638378



FENLAND LEISURE PRODUCTS  
**PLAY SOLUTIONS**  
SCHOOLS, PARKS &  
LOCAL AUTHORITIES

Designing and manufacturing  
play equipment in the UK for  
over 21 years specialising in:

- Multiplay Towers
- Net Play
- Aerial Runway
- Outdoor Gyms
- Roundabouts & Seesaws
- Spring Rockers
- Slides
- Trim Trails
- BMX & Mountain Bike Tracks
- Seats & Bins
- Fencing
- Surfacing Solutions
- Bespoke Build Service



**[www.fenandleisure.co.uk](http://www.fenandleisure.co.uk)**

Tel: 01354 638359 Email: [sales@fenandleisure.co.uk](mailto:sales@fenandleisure.co.uk)

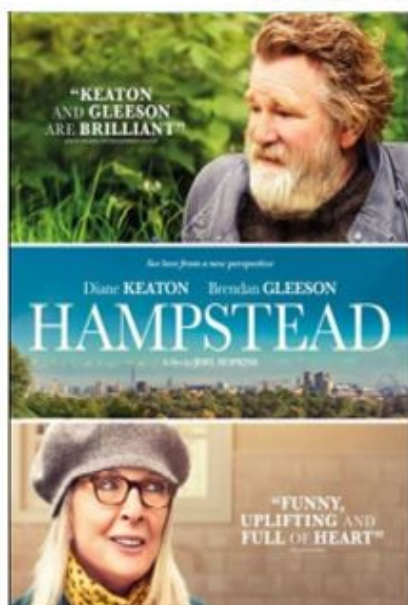




THREE HOLES VILLAGE HALL *Charity No. 304483*

**Main Road, Three Holes, PE14 9JR**

**Sunday 14<sup>th</sup> January, 2pm**



**HAMPSTEAD : (12a) 100 mins**

With Diane Keaton, James Norton, Simon Callow.

A widow finds unexpected love with a man living wild on Hampstead Heath, when they take on developers who want to destroy his home.

✦ **Archive local footage of Christmas Past**

✦ **Another chance to see Welle Film**

**Productions presenting**

**'BELL RINGING at UPWELL St PETERS'**

Find out all about the fascinating art of bell ringing at Upwell St Peter's Church from the local people who are keeping this dying skill alive.

**NO NEED TO BOOK** - Admission is £3 per person. Doors open 30 minutes before screening commences. Refreshments and licensed bar available. Tel. 01945 773710 or 772824

# MAJESTIC

WINDOWS . DOORS . ROOFING

BI - FOLDS . CARPENTRY

CONSERVATORIES

COMPOSITE DOORS

HOUSE RENOVATIONS

GARAGE CONVERSIONS

FASCIA, SOFFIT, GUTTERS

**FREE QUOTATIONS AVAILABLE**

**MIDDLE-MASS@LIVE.CO.UK**

**MOBILE : 07875 745125**

**OFFICE : 01354 461172**

**MARCH, CAMBS**



## PADDOCK & FIELD SERVICES

Equestrian and Small Acreage Specialist



**Andy Jackson**

Orchard Barn  
Flint House Rd  
Lotts Bridge  
PE14 9JN

07801 108 555



andy@paddockandfieldservices.co.uk  
paddockandfieldservices.co.uk

TOPPING, HEDGE & VERGE CUTTING,  
HARROWING & ROLLING,  
SPRAYING, BALING,  
MACHINERY RENOVATION & REPAIRS

## Outwell Timber

For all your Timber and Building Supplies

ISLE ROAD, OUTWELL  
PE14 8TD

Tel: 01945 77 21 16

FENCING, PANELS, TRELLIS  
TIMBER, PLYWOOD, DECKING

SAND, BALLAST, GRAVEL

SCREWS, NAILS, BOLTS

PAINT, SILICONE, HAND TOOLS

LOCKS, ELECTRICALS, PLUMBING,  
GUTTERING

UNDERGROUND PIPE & FITTINGS

CEMENT, MULTIFINISH, PLASTERBOARD



live  
happy!  
with  
Slimming World

save £5  
join now!

Just £9.95 on week one  
then £4.95 each week

**DODDINGTON**

**MONDAYS 9:30 AM, 11:30 AM,  
3:30 PM, 5:30 PM + 7:30 PM**

**DODDINGTON VILLAGE HALL,  
BENWICK ROAD**

**TEL: DIANE 07707 547604**

**WWW.SLIMMINGWORLD.CO.UK/**

**SLIMWITHDYNAMICDI**

**\*OPEN BANK HOLIDAY MONDAYS\***

find this delicious recipe online  
f t i s l i m m i n g w o r l d . c o . u k

*Slimming*  
WORLD  
touching hearts, changing lives

## FOUR SEASONS TREE SERVICES

Qualified & Professional Tree  
and Client Care



PRUNING ● LOPPING ● FELLING  
PLANTING ● REDUCING & RESHAPING  
CROWN RAISING ● HEDGE TRIMMING  
THINNING ● POLLARDING ● STUMP REMOVALS  
OVERGROWN GARDENS PUT BACK INTO SHAPE  
FRUIT TREES TREATED ● LOG & WOODCHIP SALES

FREE ESTIMATES & ADVICE WITH NO OBLIGATION

For quality jobs at a competitive price call:

**Home: 01353 721665 - Mob: 07771 707921**

All work carried out to BS 3998 Standard

A genuine family managed business est. for over 30 years - Fully Insured



Environment  
Agency  
Registered  
Waste Carrier



This company offers a 7 day cooling off period



## Winter Health Update

Speaking with Dr Paul Williams of Upwell Health Centre in late December, he said that so far they had been lucky in not experiencing the expected flu epidemic, although there had been a few cases. There had been a good uptake on flu jabs generally though vulnerable groups like the over 65s and the very young may remain at risk if not treated.

Also the Queen Elizabeth Hospital at King's Lynn has closed two wards due to a second outbreak of **Norovirus** also known as **Winter Vomiting Bug** which causes diarrhoea and vomiting. Dr Ian Hosein, interim associate

medical director said: "It is important to emphasise that this is principally a food born infection. I would ask visitors not to bring self-prepared food items into hospital." Visitors are being asked to stay away from the hospital if they have experienced vomiting and diarrhoea in the past 48 hours. Dr McDonald of Upwell Health Centre said that there has been a large increase recently in cases locally.

Novovirus is the most common cause of viral gastroenteritis in humans. It affects people of all ages. The virus is transmitted by faecally contaminated food or water, by person-to-person contact, and via aerosols of vomited virus and subsequent contamination of surfaces.

### What to do if you have symptoms:

- Norovirus infection is a self-limiting illness and you will usually recover naturally without treatment. It is, however, important to take plenty of drinks to replace lost fluids.
- Visit the NHS Choices website at [www.nhs.uk](http://www.nhs.uk) for advice on how to manage your symptoms at home or help to access the most appropriate health service.
- If symptoms persist, ask for a telephone consultation with your family doctor. Try to avoid visiting your GP surgery or local A&E Unit as you may pass the infection on to others.
- Wash hands thoroughly and regularly at all times, particularly after using the toilet and before eating.
- Do not visit friends or relatives in hospitals or residential care homes until you have fully recovered and have been free of symptoms for at least 48 hours as there is a real risk that you would introduce the infection into these communities putting vulnerable people at risk.
- Stay away from work or school until you have fully recovered and been free of symptoms for 48 hours.
- Do not handle or prepare food for other people until you have been free of symptoms for at least 48 hours.



## AFC CHRISTCHURCH 2017-2018 SEASON



Benwick Athletic Reserves 2  
AFC Christchurch The Magpies 11

AFC Christchurch The Magpies 10  
Coldham United Reserves 0

Pos		P	W	D	L	GD	Pts
1	AFC Christchurch The Magpies	11	9	0	2	24	27
2	Little Downham Swifts Reserves	9	8	1	0	27	25
3	St Ives Rangers Reserves	9	7	1	1	42	22
4	Wicken First	12	6	3	3	22	21
5	March Soccer School Academy	12	6	2	4	22	20
6	Fenstanton Reserves	11	6	2	3	3	20
7	Littleport Town Reserves	9	5	0	4	0	15
8	Chatteris Town Youth Fen Tigers Reserves	12	5	0	7	-3	15
9	Marchester United First	10	3	4	3	2	13
10	Cotttenham United A Team	12	3	4	5	-17	13
11	Coldham United Res	12	3	2	7	-15	11
12	Somersham Town A Team	12	0	2	10	-43	2
13	Benwick Athletic Reserves	13	0	1	12	-64	-2

Manager: Peter Chenery Correspondent: Yvonne Chenery

Christchurch Playing Field, Upwell Road, Christchurch, Cambridgeshire PE14 9LL

#### RESULTS NOVEMBER

02/12/17	Benwick Athletic Reserves	2-11 Win	Away	League
16/12/17	Coldham United Res	10-0 Win	Home	League
23/12/17	Marchester United First	-	Away	League

#### FIXTURES JANUARY

13/01/18	Little Downham Swifts Reserves	14:00	Home	League
----------	--------------------------------	-------	------	--------

While the FA are updating their website, Players Stats will appear here again soon.



# Healthwatch

Your voice in health and care

Accessible Information as Standard report launch



A successful launch event shows there is still much to do to achieve

Accessible Information as Standard.

Dateline 29/11/2017

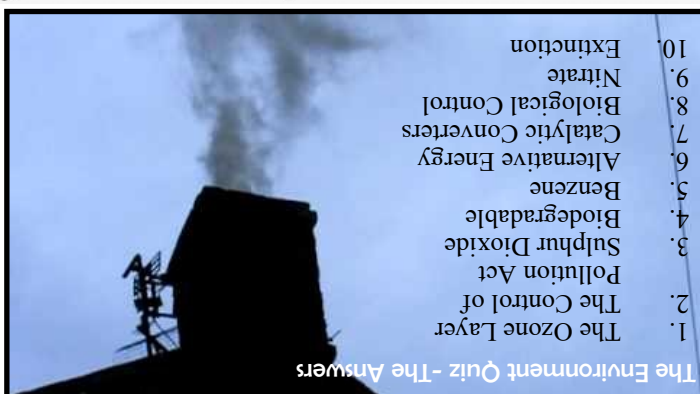
**Last week, we launched our new report 'Accessible Information as Standard' to a room spilling over with more than 70 people. The crowd was full of people with information support needs and their loved ones, representatives from local healthcare services, and people representing various health and care advocacy services.**

**There is still a long way to go until we have Accessible Information as Standard for everybody. Health providers present at the launch promised that they would work to bring about the change that is so clearly needed. We promise that we will continue to do the same.**

IF ANY OF YOU HAVE UNWANTED CHRISTMAS PRESENTS, YOU MIGHT LIKE TO OFFER THEM FOR SALE HERE



**193 nations sign pledge to tackle 'global crisis' of plastic in the oceans**



## NB - Advanced Notice

There are to be road works in Wimblington and Manea area. It will require road closures for various lengths of time.

At present none of these are confirmed:

**Junction of A141 and B1093** - Installation of traffic signals - 5/3/18 to 13/4/18 - Night closures and local traffic management

**Boots Bridge** - Manea Road replacement of bridge deck and parapet - 24/7 closures 16/4/18 to 22/6/18

**Manea Road B1093** - Carriage maintenance 25/6/18 to 6/7/18 - closure times tba

**Isle of Ely Way A141** - Carriageway Maintenance - 26/6/18 to 6/7/18 - Night closures

We are grateful to Jane Rees - Parish Clerk for this advanced warning

## Small Personal Ads

Free to local residents and contributors

### ARTICLES FOR SALE

His & Hers adult bikes for sale



£45 each ono.

01354 638989 or 0788 068 4568

### NOTICES



Oscar, our Glen of Imaal terrier  
Lost his battle with Cancer  
On Monday 11th December 2017  
RIP little mate  
Marion and Steve

# Useful Telephone Numbers

Age UK Cambridgeshire	0300 6669860
Alzheimer's Society (Fenland)	01945 580480
Anglian Water – Susan Bull	08457 145 145 101
Christchurch Resident's Association	01354 638990
Churchwarden - Mrs. D. Symons	01354 638352
Citizens' Advice Bureau, Wisbech	01945 464367
Community Car Scheme (to book a journey)	07902 316360
Community Centre bookings	01354 638478
Community Fire Safety Officer	07717858166
District Councillor - Will Sutton	01354 638025
District Councillor - Michelle Tanfield	07908 707129
Electricity Faults - UK Power Networks	105
FACT	01354 661234
Fenland District Council	01354 654321
Floodline	0845 988 1188
Library - March	0354 0455225
National Debtline	0808 808 4000
Norfolk Dial-a-Ride	01553 770310
Parish Clerk - Jane Rees	01354 638131
Parish Councillor - Jill Bliss	01354 638343
Parish Councillor - William Beswick	01354 638758
Parish Councillor - Roger Gladwin	01354 638538
Parish Councillor - Geoff Harper	01354 638681
Parish Councillor - James Hughes	01354 638310
Parish Councillor - Peter Owen (Chair)	01354 638847
Parish Councillor - Nigel Russell	01354 638279
Police - PCSO Sue Clarke	07738025220
Police - Emergency	999
Police - Non Emergency	101
Telephone Complaints	0345 145000
Townley School	01354 638229
Trading Standards	845040506
Train Information	08457 484950
Upwell Health Centre (and out of hours)	01945 773671
Upwell Health Centre - Pharmacy	01945 774934
Vicars - Ian & Lynda Brady	01354 740627
Water Emergencies	08457 145145

## Club Contacts

Art Club - Jan Clifford	01354 638217
Book Club - Sheila Day	07946 635908
Craft Club - Wendy Yates	01354 638448
Gardening Club - Marion Hawthorne	01354 638230
Short Mat Bowls Club - Wendy	01945 772737
WI - Peggy Warby	01354 638339

## Neighbourhood Watch

Colin Steenson - Church Rd (East)	01354 638664
Sandra Kay - Crown Rd	01354 638478
Peter Knight - Church Rd (West)	01354 638779
David Yates - Church Rd (West)	01354 638448
Julian Swallow - Upwell Rd (North)	01354 638679
Jackie Wood - Upwell Rd (North)	01354 638679
Simon Freeland - Upwell Rd (South)	01354 638802
Richard Guilford - Area Co-ordinator	01354 638990
David Harrowing - District Co-ord.	01945 870963

## And Finally...

So a New Year begins! We hope for health and prosperity but Brexit still looms! What will the final outcome be? They say – “The Lord helps them that help themselves!” Whether you are a believer or not it is a known fact that every effort has its own reward – So...



What about those New Year's Resolutions? What about the Environment? Are you prepared to step up and help try and improve this world of ours? Even the smallest effort helps! Please give it some serious consideration. What about a 4Ocean bracelet? That way you have something tangible to wear for your efforts!?

Happy New Year to you all!

'Till next time!– Ed'.

Web links in the Heron are active when viewed in our online version [www.theheron.info](http://www.theheron.info)



# CHRISTCHURCH WALKS!

## PART TWO

PUBLIC BYWAY

The next mile, the Christchurch River Walk continues...

... as we know it was lunchtime Sunday afternoon on the 26th November. The sun was shining, cold, and the village was silent!... ***'As I walk over the bridge and look to my left this is where our journey ends, blocked by bins and large shrubs.'***

As the arrow points, there is no way to access the path the sign is on!

The Christchurch sign at the bus stop shows the church, the river and farmland running alongside, so this must've been a walk at some point. The sign post has a smaller sign bottom right, *'Please keep to the path and keep your dog under close control'*

So from what I see one needs to jump over the fence and into the bracken to access while trying to lift your dog over a the same time. We will call this route 'A'. The longer route which will add another half a mile to the journey is route 'B'.

Trying out route 'A' was easy though you wouldn't want to do this each time you went for a walk along the River bank. Route 'B' was interesting continuing along the Public Byway, but when you reach the end of the properties you turn left and walk approximately 60 yards along the path, then you have to follow the farmland around the edges until you reach the River Walk.

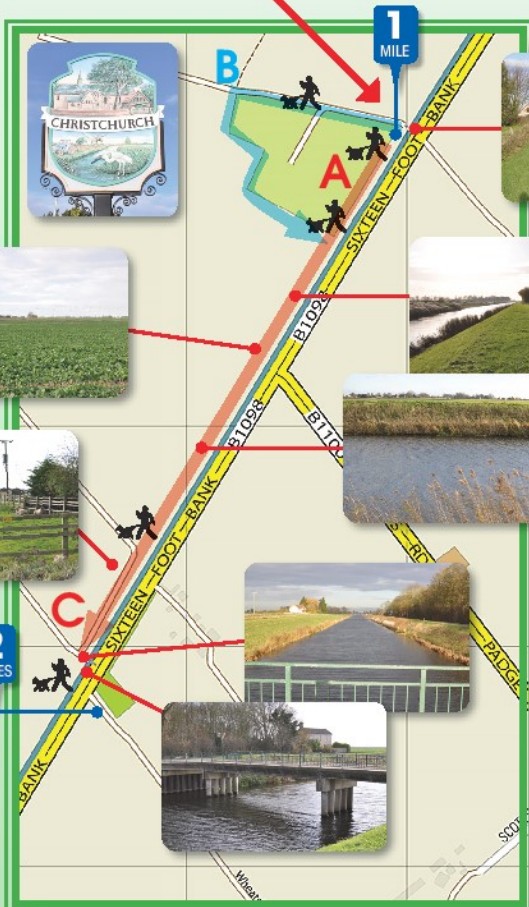
Only one problem, hidden holes in long grass, nettles and the possible occasion treading on the farmers lush vegetation.

Back on route 'A', the views are great, wild life in abundance on land, but the river is silent, no boats! The odd few coots, moorhens and swans sleeping or swimming. I hope in the Summer months it will be full of character and life, it'll be a great place for picnics and fishing.

There's plenty of space to pass other walkers between the farmers crops and the bank of the river, if dogs are under control leads would not be an issue here, only downside there are no bins for waste (doggy bags essential).

As we admire the views we eventually come to a small holding, two sheep in a small field. Here would be a good time to put your dog back on the lead, not to frighten the sheep, but because an electric fence runs around it.

We continue the last two hundred yards before we come up to a gate and our next sign at 'C'.



*'Private property Keep Out, Access to Middle Level Commissioners only'*  
What does this mean?

As the sign was very old, falling apart, visible only on the far side and the gate was not padlocked. So following the country rules, a shut gate must be closed after you open it, I walked through, thus only noticing this sign.

This now just leaves me to walk over the bridge and to continue my journey. In the next issue Part Three I will be taking you on the last stretch back to the 'Un Cow Pub.

Here I raise a couple of questions to the Parish Council.

Are these signs just a scare, or can gates or countryside stiles be put at both ends of the river walk? There's no danger along here unless stupidity sets in, this place is missing people and boats.

Regards Avid Reader.

Please remember your Countryside Code, **Respect - Protect - Enjoy**



**KEEP DOGS ON LEAD AT THESE POINTS**



# Christchurch's Food Fayre

Turn out at the first Christchurch Food Fayre was disappointing, but we must consider the event itself a success. This was in part due to March Christmas Fayre being on the same day, and I discovered late that Downham Market were having theirs too. Our event had originally been planned for mid-



*Silverfins of Dereham*

November, but for a variety of reasons had been pushed back several times. Despite being on Radio Cambridgeshire, in the local press, and well advertised with posters around the village, and in local shops, we did not get the response we had been hoping for. In fact two villagers, who shall remain nameless, even said; "We didn't know anything about it!" and "We didn't know it was on!" It had even been advertised in the previous month's Heron in November! What more do we have to do!!?

However, despite all the above, the Food Fayre can still be considered a success, at least in part. After an initial outlay of more than £400 we still managed to make £100 profit. But it was a lot of work for such small beans. In any event, all but one of the stallholders



*Familiar Faces running the Hog Roast*

were very pleased with the day and were looking forward to the next one! All donated prizes for the raffle with Smiths of Wisbech (fruit and veg) donating

two hampers, one of fruit and one of veg. Their stall along with Silverfins of Dereham (seafood)

were the stars of the show with two fantastic displays followed closely by Karen and her delicious home made cakes. All the stallholders put on a good show. There was also a W.I. display dealing with food



*Churchill's Ciders*

waste, and a Heron display offering back issues.

The suggestion was made by several stallholders and customers that we hold such an event once a month like a Farmers Market! How would you all feel about that?

Would you support

it? With the absence of a village shop in Christchurch now it would seem like a good idea don't you think?

We are considering putting on another similar event in middle to late March. So watch this space! May I express



*Smith's Fruit and Veg*

a very big thank you to all the stallholders, supporters and of course all my helpers. I couldn't do it without you!

RWBG

Any views expressed in The Heron do not necessarily reflect the views of The Heron Editorial Team. The team aim to provide a balanced view of village opinions where such views are expressed.