

# The Heron

Community Magazine

March 2018

Delivered to homes in Christchurch, Euximoor and Tipps End - £1 where sold

## In this issue!

Katie's Fundraiser	2
Community Info	3
Editorial	3
Diary Dates	4
Church Services	4
Letters to the Editor	5
Pop-Up Coffee Shop	5
Arts - Jazz Club	6
Arts - Welle Cinema	6
Arts - Rhyming Crime	7
Cambs Fire & Rescue	9
Clubs Pages	10 & 11
Youth Page	12
Fashion Page	13
GB Spring Clean	15
House of Horrors	15
Waterways Volunteers	16
Joan Smith Column	16
FDC Shakeup!	17
Quiz - Months of Year	19
Syringa House History	20
Townley Page	21
The Bramley Line	24
Neighbourhood Watch	25
Useful Numbers	26
And Finally	26
Richard Hughes	27
Heron Sport	28

## A Big Hand for Katie!



## Off to the Maldives!

### Editorial Team:

Richard Guilford – Editor

Linda Webster – Treasurer & Ad. Manager

### Website:

### Enquiries:

[www.theheron.info](http://www.theheron.info)

[editor@theheron.info](mailto:editor@theheron.info) / 01354 638990

[adverts@theheron.info](mailto:adverts@theheron.info) / 01354 638124

Support - Derek Randall-Hall, Elaine Reed-Hughes, Lewis Bennett, Hazel Crawford, Sandra Kay & Team





# Katie's Quiz Fundraiser

Katie Ingram had been thinking about doing some volunteering work overseas since she was about 14 yrs old. These thoughts finally started to become proper plans as of August last year.

Originally Katie had planned to go with two friends, but they had to back out for financial reasons. Undaunted Katie began her fundraising, initially selling cakes at school, then running a 5-a-Side football competition where players had to pay £2 each to play, and they sold refreshments afterwards.

She organised her trip through CAMP Africa, and was going to work in a community in the Maldives helping underprivileged children; teaching them English, cleaning the environment, sport, and generally improving their quality of life. But it was going to cost!

Katie needed to raise £1500 for her trip plus another £500 for the flight. She managed to get a bursary of £500 from school, Neale Wade, via the Michael Wilding Foundation. This was their top award!



Katie had received a lot of help and support from her schoolfriends with her previous fundraising efforts, but she needed a 'big push' to raise the rest of the funds needed.

She plays in a ladies Sunday Football League for Hungate Rovers as well as at school of course. She is planning eventually to go to Gloucester University to study Physical Education with a view to teaching. Currently seventeen years old Katie has to be eighteen years old to go on her trip. She'll be setting off for the Maldives on 26<sup>th</sup> July and will be eighteen on July 6<sup>th</sup> - so she just made it! She'll be out there for three weeks until the 14<sup>th</sup> August.

Katie planned and organised a Quiz Night with curry or chilli, jacket potatoes, and other nibbles for Friday 16<sup>th</sup> February, with lots of help from mum and dad of course and her brother Josh. Will Sutton was a great help as question master with three rounds, general knowledge, TV, and one round where the answers all began with B. Katie and her mum Ruth came up with three other rounds on music, body parts, and estimates. The latter two rounds causing great hilarity with body parts having to be pointed out (*as per front cover - Ed*!) "Oh you've got one of those in your head have you?" The final question was "What percentage of men would let their wives go with another man for one night for a million pounds!" Much discussion and negotiation ensued between many couples there! There was a fantastic turnout of great support for Katie in her endeavours with over seventy people who managed to help raise over £650!



That's a wonderful contribution towards Katie's travel fund, and she Ruth and Colin would like to thank all those who attended Katie's fundraiser for their amazing support! It exceeded all expectations and Katie is extremely grateful. Special thanks to mum and dad, Will Sutton, and his daughter Lisa who helped out behind the bar along with brother Josh. Any further donations would of course be gratefully received!

\*\*\*\*\*

*Rumour has it that some of the funding may even have to go towards getting Katie's jeans repaired!?*

*Or maybe even buying her a new pair!?*  
-Ed'.

\*\*\*\*\*



Colin and Ruth hard at work in the kitchen

# Community Information

**Mobile Library:** First Tuesday each month - In the Lay-by Upwell Road - 12:15 to 12:45pm

## Mobile Post Office:

Visits Mon to Thu in the Lay-by Upwell Road.  
Monday and Thursday - 16:30 to 17:00  
Tuesday and Wednesday - 6:10 to 17:00  
Fridays - no service

## Dun Cow Meal Deal

on alternate

Wednesday lunchtimes - 2 courses for £5.50 -

Pre-booked places ONLY.

This month's dates are 14<sup>th</sup> Mar, 28<sup>th</sup> Mar, 11<sup>th</sup> April

## Village Litter Pick

The Parish Council are organising a village litter pick for Saturday 3<sup>rd</sup> March. This will start at 10.00am. Please meet promptly in the Community Centre car park. They would like as many people as possible to get involved with a view to setting up a local 'Street Pride Group'. You can find more information on Street Pride at [www.youtube.com/watch?v=p-YMpYzNxw](http://www.youtube.com/watch?v=p-YMpYzNxw)

The litter pick is in-line with Keep Britain Tidy's latest campaign 'The Great British Spring Clean'. Please see [news@KeepBritainTidy.org](mailto:news@KeepBritainTidy.org) and the article on page 15

## NB - Advanced Notice

There are to be road works in Christchurch, Manea, and Wimblington areas. Each will require road closures for various lengths of time. (TBC)

**Junction of A141 and B1093** - Installation of traffic signals - 5/3/18 to 13/4/18 - Night closures and local traffic management

**Boots Bridge** - Manea Road replacement of bridge deck and parapet - 24/7 closures 16/4/18 to 22/6/18

**Manea Road B1093** - Carriage maintenance 25/6/18 to 6/7/18 - closure times TBC

**Isle of Ely Way A141** - Carriageway Maintenance - 26/6/18 to 6/7/18 - Night closures

**Cotton's Corner Bridge** - Road closed from 22/01/18 for 14 weeks for bridge reinforcements Tel:03450455212

**School Defibrillator** - location is on the wall of the dining hall in Townley School grounds. Access via the car park in Greenways off Crown Rd.

## Contact the Parish Council?

phone numbers: in Useful Numbers page 26,

email: [christchurchcambspc@gmail.com](mailto:christchurchcambspc@gmail.com)

website: [christchurchpc.btck.co.uk](http://christchurchpc.btck.co.uk)

## Delicious Fish and Chips

are available outside the Dun Cow from Michael and Michelle's van on Fridays 5pm to 8pm

**Parish Lunch 2018** will be on Sunday 15<sup>th</sup> April 12.30pm for a 1 o'clock kick-off. 'Keep the Date' in your diary. Invites will be going out in due course!

## EDITORIAL

Hi all!

Firstly, huge congratulations to Katie Ingram on a fantastically successful fundraiser for her trip!

Well, in case you hadn't noticed, last months edition of The Heron was the first one I had attempted to put together myself; though I still needed a lot of help from Paul. Of course I thankfully have great support from Derek - Youth Page & Sport, Liss - Fashion, and Elaine - Clubs Page. Then of course there are our columnists and report writers. Finally Lewis sorts out the web page. In the past Paul had been responsible for pasting it all together with an overview from myself regarding layout and general editorial issues - like writing this for example!

Now I have taken over Paul's role due to he and Viv's impending move. But, thankfully he has not completely let go of the apron strings quite yet. Whilst I used to do this sort of thing some years back, up to now Paul had been in the technical driving seat. So not only am I a bit rusty, but also the technology has moved on apace over the years, which has left me with a bit of a steep learning curve in some areas in terms of 'catch - up!'

Hopefully, 'normal service' will be resumed in the not too distant future!

Meanwhile we hope that you will still enjoy all the usual features in your Community Magazine, as well as one or two new ones. Please keep your letters or emails coming in with any news and views or articles of interest.

Two important dates for the diary in April:- the Parish Lunch on Sunday 15<sup>th</sup>, and Christchurch Food Fayre on the following Sunday 22<sup>nd</sup>.

Enjoy 'till next time!





# DIARY DATES

Abbreviations for commonly used venues:

TS = Townley School, CCC = Christchurch Community Centre, (new Hall)

TH = Three Holes Village Hall, UH = Upwell Village Hall, WH = Welney Village Hall

## Weekly events

Mondays Pop-Up Coffee Shop - 9.00 -11.30am - CCC

Pilates - each Monday - 6.30-7.30pm - CCC

Fridays "Cake, Coffee and Chat" - 2.00 - 3.00pm - Parish Church - ALL WELCOME

Fish and Chip Van visits - outside Dun Cow - 5-8pm

## General events

Mar 2<sup>nd</sup> Women's World Prayer Day - Manea Church Rooms 2.30pm

Mar 6<sup>th</sup> Craft Club - Easter Crafts - 7.00pm - CCC

Mar 9<sup>th</sup> Coffee & Cake restarts in the Church 2.00 - 3.00pm

Mar 11<sup>th</sup> Welle Cinema - Victoria & Abdul - Cert 12a - 2.00pm - £3.00 entry - TH

Mar 12<sup>th</sup> Parish Council Meeting - ALL WELCOME - 7.30pm - CCC

Mar 13<sup>th</sup> Art Club - 1.30 - 3.30pm - CCC

Mar 13<sup>th</sup> WI - Liz Wright on Donkey Sanctuary - 7.00pm - CCC

Mar 20<sup>th</sup> Gardening Club - Paul Canham - Aspel Lane Nurseries - 7.00pm CCC

Mar 25<sup>th</sup> Jazz Club - Benny Goodman stylings - £6.50 entry - Bar and snacks - CCC

Mar 27<sup>th</sup> Art Club -1.30 - 3.30pm CCC

Mar 28<sup>th</sup> Defibrillator Demonstration by Paul Russell - 7.30pm - CCC

Mar 28<sup>th</sup> Christchurch Book Club - 7:30pm - venue TBA - info 07946 635908

April 6<sup>th</sup> Family Bingo - Money Prizes, Raffle, Tea & Cakes, Bar - 7.00pm start FREE CCC

April 8<sup>th</sup> Welle Cinema - Murder on the Orient Express - 2.00pm - £3.00 entry - TH

## Parish Church Services

Mar 4 <sup>th</sup>	11.00am	A Carlin, A Day	All Age Worship
Mar 11 <sup>th</sup>	9.30am	Revd Tooke, SE Tooke	Holy Communion
Mar 18 <sup>th</sup>	3.30pm	Revs I & L Brady	Evening Prayer
Feb 25 <sup>th</sup>	11.00am	Revd I Brady, A Carlin	Morning Prayer & Baptism
Mar 30 <sup>th</sup>	2.00pm	* St. Peter's Wimblington	Good Friday Service
April 1 <sup>st</sup>	11.00am	Revd Tooke, SE Tooke	Easter Day Communion
<b>Every Friday</b> 2-3pm Coffee, Cake and Chat in the Church building			Daphne and Andrew.

## PLEASE NOTE — The Heron Deadline

The deadline for all **copy** for April's edition of The Heron is **25<sup>th</sup> March**. However, due to the amount of copy we are getting, leave it till then we may not have space.

**So - AS EARLY AS YOU CAN PLEASE !**

**Advertisers** - all our advert rates and conditions can be found on our website [www.theheron.info](http://www.theheron.info)  
Business advertisers can book series of six or 12 adverts, paid in advance. Adverts for village fundraising events, personal announcements, or small private ads are usually free.

**At the time of going to press, all information is as accurate and up to date as we can make it. Changes and updates may be published subsequently. All information contributed by outside agencies, including dates etc., will be assumed to be correct.**

**NB as a matter of courtesy no content from the Heron should be used without prior permission**



## Letters to the Editor



Hi Richard!

I thought I should let readers know of a scam from people purporting to be from BT regarding a number they have available which is set up to block nuisance calls. They give a number to ring, which in itself could be a premium rate number. They then talk about setting up a monthly standing order and go on to ask for your bank details. It was at this point that I challenged them and said "Well this is obviously a scam isn't it?" after which they then slammed the phone down! My best advice is never give your bank details to any caller unless it is something you yourself have arranged to set-up! Banks and legitimate organisations never cold call asking for bank details.

Be warned everyone!

Kind regards

Peter Owen

*Thanks for the warning Peter! - Ed'.*

Dear Editor,

The Environment Agency is looking for people who live close to Denver, Downham Market, to volunteer at the Denver Complex. This would involve helping boaters to use Denver lock, keeping the site tidy and attractive, and attending waterways festivals. No prior knowledge of boating is required, just an interest in rivers and boating. Volunteers will be trained by the Environment Agency and will be given a uniform and ID badge. The scheme is managed by Cambridgeshire ACRE on behalf of the Environment Agency.

I would be grateful if you could make your residents aware of this opportunity by letting your Parish/Town Council know about it and circulating the draft email below to any contacts and community groups you think may be interested. Any other help you could offer would be welcome. I do have posters and leaflets I could send (electronic or paper copies). Your expertise and support is much appreciated.

Kind regards

Rachael Brown

Community Development Manager

[rachaelbrown@camsacre.org.uk](mailto:rachaelbrown@camsacre.org.uk)

01353 865037

*Please see more details in the article on p. 16 - Ed'.*

### AU REVOIR!

We would like to say farewell to all our friends and neighbours in Christchurch after four and a half years here with you all. We are moving south to be nearer family, but will miss all the activities and life that goes on in the village.

Wish us luck for the future as we wish the same to all of you. Take care one and all! xx

Au revoir

Anne & John Atkinson

## Pop-Up Café & Coffee Shop

Pop along and have breakfast with us!

We are now offering  
a Full English Breakfast for only £4  
plus sausage, bacon, and/or egg rolls,  
using homemade produce,  
and locally sourced, free range  
meat and eggs where possible.

**EVERY MONDAY MORNING**

**9.00am till 11.30am**

**School Holidays - 9.30am till 12.30pm**  
(with films, tuck shop, and activities for the children)  
at

**Christchurch Community Centre**  
Hot Drinks, Biscuits, Cakes, and Cookies

All Welcome!

We look forward to seeing you!

## COMMUNITY CENTRE DEFIBRILLATOR DEMONSTRATION

**WEDNESDAY 28<sup>th</sup> MARCH**  
**7.30pm**

at the  
**COMMUNITY CENTRE**  
Paul Russell will be  
demonstrating how to use the  
new equipment for all those who  
might be interested

## PILATES

**Please come and join our Pilates class**  
**to get fit for Summer**

**Men and women - All welcome**

**Excellent core exercisers to strengthen,**  
**Joint mobility, and suppleness**

**Monday evenings at The Community Centre**  
**6.30pm - 7.30pm**

**Ring Jane on 01354 638378**

Would anyone be interested in a daytime class?

## Jazz Club

### THE BIRTH OF THE BLUES BY STEVE WAYE

As some of our readers will know, as a musician that plays Jazz and Blues, I am always willing to promote the music dear to my heart. As I was unable to make it to the Jazz Club this month, instead of my normal review, I thought you might be interested in just a little of this music's journey.

To many, Blues and Jazz are like brother and sister but while they share some DNA, they arrived in different ways. During the late 19<sup>th</sup> and early 20<sup>th</sup> Century, Blues arrived in the city's via rural guitarists. A trumpet playing band leader named W.C. Handy was travelling home from a gig by train one night in 1903 and found himself on a platform waiting to board the next arrival, in Tutwiler Mississippi, while a young raggedy man was playing guitar with a knife (a form of bottleneck playing) and singing a song with three 12 bar verses. Handy was intrigued by this form which as a middle class educated musician was not previously known to him.

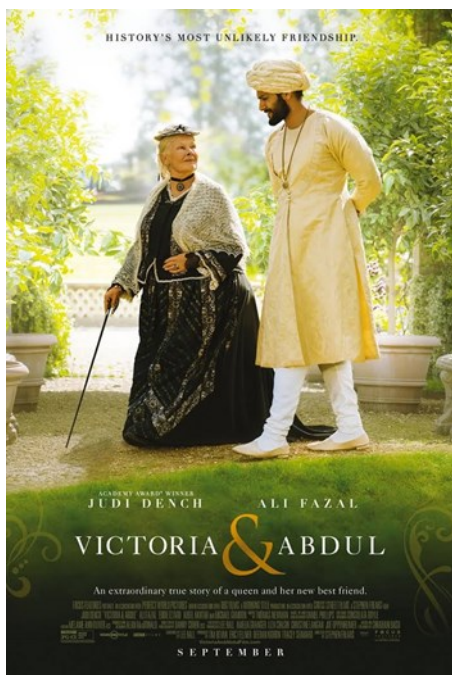
However, it took Handy until 1911 to publish his first



## ARTS



Blues hit, Memphis Blues, followed in 1914 by St Louis Blues, still one of the most recorded blues of any era. This was not however the first commercially available recording, that honour goes to Anthony Maggio with "I Got the Blues" in 1908, while sandwiched in the middle is Hart Wand's, "Dallas Blues" first copyrighted in 1918. These forms were taken on by many early performers such as Ma Rainey in the 1920's who is credited by some as mentor to Bessie Smith. These and many other artists gradually sophisticated the rural blues form and brought it nearer to the popular music of the day. Bessie Smith was later to record a song made popular in more contemporary times by Eric Clapton, "Nobody Knows You (when you're Down and Out.)" Bessie was a fierce advocate against the Klu Klux Klan, who tried to disrupt her shows when on tour in the Southern States. On one tour in 1929 she paid the ultimate price, when after a car accident an ambulance was dispatched but refused to take her to hospital, as it was for whites only. By the time the racially correct vehicle had arrived she had bled to death. A dreadful slur on the societal values of the time. I hope we are more enlightened now. Although sometimes I wonder.



THREE HOLES VILLAGE HALL *Charity No. 304483*  
Junction of Main Road & Squires Drove, Three Holes, PE14 9JY  
Sunday 11<sup>th</sup> March, 2.00pm

## VICTORIA & ABDUL (PG)

The extraordinary true story of an unexpected friendship in the later years of Queen Victoria's (**Academy Award winner Judi Dench**) remarkable rule. When Abdul Karim (Ali Fazal), a young clerk, travels from India to participate in the Queen's Golden Jubilee, he is surprised to find favour with the Queen herself. As the friendship deepens, the Queen begins to see a changing world through new eyes and joyfully reclaims her humanity.

**NO NEED TO BOOK - Admission is £3 per person.**  
**Doors open 30 minutes before screening commences.**  
**Refreshments & licensed bar. Tel. 01945 773710 or 772824**



## "The Case of the Rhyming Crime"

Whatever next, education in a pub ages eight to eighty? Well that's what was served up on Sunday 11<sup>th</sup> February at The Dun Cow in Christchurch, as well as a warm welcome, a hearty crowd had gathered.

Did we know what to expect after all this? Was it really to be Sherlock Holmes and Dr. Watson entertaining the patrons? With an open mind, a full glass, and a comfy seat, the session began. The props ready on the table, a pipe in it's stand, a bell for attention and some cryptic notes at hand, in came Dr. Watson; introducing himself, then going straight in to his rhetoric. You could have heard a pin drop as the good doctor outlined in rhyme the situation at hand.

His words were as slick as the suit being adorned, keeping one and all mesmerised; and, not to be outdone, his colleague and mentor Sherlock Holmes

by Paul Simpson



enters to bring a raised tempo to the delivery of the storyline in rhyme. As ever Holmes having an answer for all the conundrums confronting him. For the best part of forty-five minutes, with barely a breath in between, the trail to Moriarty was trod by Holmes and Watson. With such finesse the gathered crowd could not help but applaud.

Sunday's afternoons are normally reserved for the armchair snooze, or visits to family and friends, but for those in attendance, who I hope will agree; Holmes and Watson brought nothing but glee!

I can comfortably say, for one who has never been a great reader since the Bible at Sunday school, it would only encourage me to read more having been witness to this enjoyable spectacle. The four novels and fifty-six stories featuring Sherlock Holmes and his colleague Dr. Watson have never been out of print, and still sell in new volumes that appear almost annually. They have inspired over five-hundred movies and television episodes that debut every year. Not to mention the entire genre of mystery and crime fiction that continues to draw on the templates laid down by Conan-Doyle in the original Sherlock Holmes stories. So pass that dusty volume on the shelf on to someone younger to enjoy. See [inncrowd.org.uk](http://inncrowd.org.uk)

## Upwell Jazz Club 2018

Christchurch Community Centre (Sat Nav PE14 9LL)



The UK's first  
guaranteed  
banjo-free  
jazz club

### Sunday 25th March

**Guests\*:** Pete Neighbour – *clarinet*  
Roger Nobes – *vibraphone*  
Brian Dee – *piano*  
Len Skeat – *double bass*  
Neil Bullock – *drums*

*From touring the world, playing in some of the most exclusive venues to playing in a field in Christchurch – the highlight of any musician's career! A session influenced by the great Benny Goodman, expect some fantastic music-making from some of the country's top performers – a "not to miss session."*

**Time: 12.30pm - 2.45pm Admission: £6.50 Accompanied under-16s Free**  
**Bar, fresh rolls, crisps and savouries available**  
**More information from Nigel Smith on 01945 773121**

\* artistes subject to change



# A.R. CLINGO

## FUNERAL DIRECTOR

**Family Independant  
Business**

**Private Chapel of Rest  
Personal Attention**

**24 Hour Service**

*Full estimates given at all times*

Golden Charter  
Funeral Plans



Pinfold House  
St. Peter's Road  
Upwell, Wisbech  
Phone 01945 772502

## BUILDING DECONSTRUCTION

Buildings bought and all materials recycled/  
upcycled

Pre 1930s preferred  
but all buildings considered  
from barns to cottages  
including site clearance

**FREE QUOTATIONS GIVEN**

We have a large number of salvaged  
**ARCHITECTURAL ITEMS FOR SALE**

Bricks & other building materials,  
roof trusses etc.

Firewood, plants, and hanging baskets

**COME IN AND SEE US**

**AND HAVE A BROWSE!**

Call Matt or Sarah Lawrence on  
Tel: 01354 638977 or, Mobile: 07856 291787  
Toll Farm, Ha-Penny Toll Road,  
Three Holes, Norfolk,  
PE14 9LJ  
Email: [buildingdeconstruction@yahoo.com](mailto:buildingdeconstruction@yahoo.com)

## CHRISTCHURCH ELECTRICAL

Simon Freeland Hill Farm, 3 Church  
Road, Christchurch, PE14 9PQ

Tel: 01354 638802    Mobile: 07727 046439



Domestic electrical work undertaken.  
No job too small.  
Free quotations / estimates.



[www.electricalcompetentperson.co.uk](http://www.electricalcompetentperson.co.uk)

[www.electricalsafetyregister.com](http://www.electricalsafetyregister.com)



March Stationery & Print

**Booklet Printing  
Business Cards  
Digital Photos  
Leaflets  
Newsletters  
Banners**

**01354 656614**

[sales@marchsp.co.uk](mailto:sales@marchsp.co.uk)

5 Fenland Walk, March, PE15 8TW



# CAMBRIDGESHIRE FIRE AND RESCUE SERVICE

## Safe and Well Visits - Helping you to stay independent in your own home

Cambridgeshire Fire and Rescue Service is committed to supporting the safety and wellbeing of residents in all of the communities that we serve. The Safe and Well visit will provide us with sufficient information to support you and, with your permission, refer you to selected partner agencies, who will be able to support you further. We will not share your data with marketing companies or for other purposes.

Our visit will last no longer than 60 minutes and is completely **FREE** of charge. Our visit will assess six key elements:

1. **Fire safety in the home** - including cooking, general safety and escape plans.
2. **Falls prevention** - including simple remedial action such as replacing lightbulbs or taping down loose carpet.
3. **Alcohol use** - Alcohol related hospital admissions are steadily increasing. We can provide you with helpful information.
4. **Stay well and warm** - Can you afford to heat your home? Do you have access to a hot meal? Do you access all the services available to you?
5. **Crime reduction** - We can provide advice on making your home more secure in addition to advice to make you less vulnerable to scams or fraud
6. **Smoking** – need a helping hand to quit? Our partners can offer you the help and advice you need to stop smoking.

You are under no obligation to answer any questions that you do not want to, but the more information you provide us with, the better we will be able to support you. We can also provide advice in relation to promoting the health and safety of individuals with hoarding concerns, as well as providing valuable information to care providers.

To find out if you are eligible for a visit, call us on 01480 444500 or email us at [firefire@cambsfire.gov.uk](mailto:firefire@cambsfire.gov.uk).

More information on the Safe and Well visit can be found on our website (above) under 'home safety'.  
Why not complete our short questionnaire to see if you are eligible?

## HOUSE CLEARANCE

Christchurch  
& surrounding areas

Removals & House Clearance  
Garages, Sheds & Attics Emptied  
Single Items to Full House  
Antiques & Modern Taken  
Light Removals  
Valuations Given  
Best Cash Prices Paid

Call for no obligation quote

**01354 638178**

THE GRANARY STUDIO  
Christchurch

Contemporary pictures  
and bespoke framing

01354 638614  
[tgs@granarystudio.uk](mailto:tgs@granarystudio.uk)  
[www.granarystudio.uk](http://www.granarystudio.uk)

# theWI

## INSPIRING WOMEN

All were welcomed by Beryl Brooks, our President and Annie Nason was introduced as a new member.

Apologies were received from Doris (Ted) Rolfe, Doris (Wolsey) Rolfe, Elaine Reed-Hughes, Michele Nardecchia and Alma Hughes.

Fish & Chips and a lovely cake (made by Beryl) was enjoyed by all members.

Val Ware, our Federation Chairman, gave a talk on the W.I. and Denman College. She brought along some beautiful embroidery that she has been doing over the years. She was thanked by Beryl and given a pot plant.

### Competition – A Seaside Item

5 pts - Sandra Kay, Val Parker, Sue Quail, Tracy Day, Jan Harper, Sylvia McLean, Beryl Brooks, Ann Hicks and Sandra Lloyd.

4 pts - Viv Haresnape, Peggy Warby, Marion Hawthorn, Belinda Gladwin.

### March meeting 13th

Speaker - Liz Wright on Donkey Sanctuary Welfare & Antedotes

Competition – Memorabilia or photo of Donkeys

Draw prizes – Peggy Warby, Wendy Yates, Sandra Lloyd and Margaret Hayes.

\*\*\*\*\*



This month we had a good clear out of the craft cupboard which gave our members a chance to purchase books and craft materials for the price of a donation to the Craft Club.

Sadly we were unable to try our hands at teabag folding this month but, several of us got stuck into finishing the blankets for the animals at Block Fen while the girls made Birthday and Valentine cards.

Next month we'll be doing Easter crafts.

New members always welcome at 7pm on the 1st Tuesday of every month.

Call Wendy on 01354 638448 for more information.

## Christchurch Book Club

The February meeting of the Book Club is not until the 28<sup>th</sup>, which is after the Heron deadline date, so we are unable to report on it this month. We have been reading 'The Power' by Naomi Alderman.

\*\*\*\*\*

Our March meeting is likely to be on the 28<sup>th</sup>, but the date and venue will be confirmed when we meet on 28<sup>th</sup> February.

Please call Sheila Day on 07946 635908, or ask any of the members for more information.

\*\*\*\*\*

We are a small, friendly group, and are always pleased to see new people. We are registered as a book club with the local library, and they are able to supply us with multiple copies of the books, so we do not need to buy our own, though there is also the option of finding the books on Kindle, which some members prefer.



It seems a long time since the Gardening Club last got together.

## Christchurch Gardening Club

Amid the coughs and colds and the winter dragging on it probably seems a longer time than it was. Still last Tuesday 20<sup>th</sup> February 2018, we met up once again for our annual A.G.M. at the Community Centre. This is the time of year when the whole committee steps down and waits to be re-elected, or not as the case may be. As in the last few years the motion to re-elect the committee on mass for another year was unanimously carried by the members. The committee are as follows: Chairman - Stephen Hawthorn, Secretary - Marion Hawthorn, Treasurer - Peggy Warby, while the other positions were filled by Tracy Day, Jenny Farnsworth, Sandra Kay and Graham Warby. Thanks for all your hard work last year, and looking forward to our current year. Our Secretary, Marion Hawthorn, has been busy and although not quite finished with her forthcoming bookings, I can reveal we have some excellent speakers and trips lined up for the coming months. First up on Tuesday 20<sup>th</sup> March is Paul Canham from Aspal Lane Nurseries in Bury St Edmunds. Paul comes highly recommended, and we were lucky to secure his services. His talk and demonstration on 'hanging baskets' should be an eye opener for all those who have struggled to tend those sometimes difficult, though worthwhile, decorative installations.



Later in the year we will be travelling away to Hyde House and the annual flower show, which should be spectacular. The house and grounds themselves are worth the trip on their own, so, we are all looking forward to that one.

The Clubs monthly meetings are on the third Tuesday each month and are open to both members and non-members alike. Likewise, the organised coach trips. Just come along on the night or call 01354 638 230 for more details. It's a very sociable club and I'm sure any members new and old will have a great time.

Steve

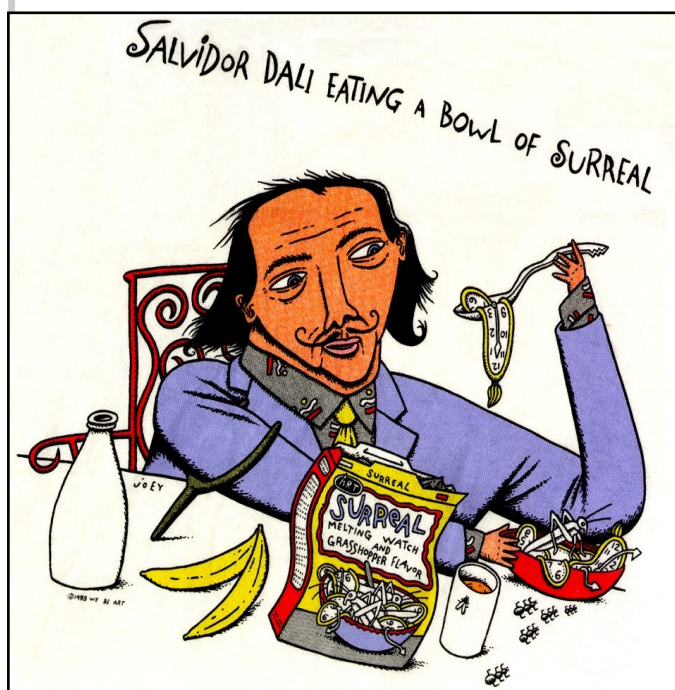
## Art Club



When Rex Ockenden presented Wendy Yates with her pen and wash picture beautifully framed, she couldn't quite believe that she was the artist responsible for the beautiful floral picture!



Last time, Jan Cliford talked us through various papers, explaining the different weights and qualities so we all have a better idea of what to use for the various medias we are trying out.







## What's local?

Each month we will try and find exciting and interesting ideas for all the family – check out what we have in-store below for this month.

### Fossils Galore Open daily 10am - 5pm

(Tuesday closes at 1pm and closed on Sundays unless a special event planned, please check facebook or homepage.)



### Fossils Galore – Metal Detecting Trips

Ever wanted to Metal Detect for your own Artefacts?

**Non Members Prices:** £5 per Child – £10 per Adult

**Tools:** Metal Detector Rental £10 per person.

Digging Tool Packs Rental £5 per set of tools per trips.

You can buy tools in the shop.

**Membership:** Why not become a Fossils Galore Member and get lots of great benefits including unlimited trips for a one off fee per year.

#### What is there to do?

- Have a look at a great collection of Fossils and Minerals!
- Gift Shop
- Fossil hunting in our prehistoric sand pit!
- Talks and Guest Speakers (Membership Only)
- Fossil identification service
- Fossil trade events (Membership Only)
- Fish bowl laboratory
- See Jordaniichthys the Big Fish and many other exciting new finds being excavated out of rock by the Fossils Galore Experts
- See the nationally important specimen Stompy the Woolly Rhinoceros Skull on Display
- Arts and Crafts Shop
- Shark Teeth Sifting
- Dino Hunt
- Birthday Parties
- Geode Breaking

#### Upcoming events:

##### Mothers Day Fun Day

Posted on February 21, 2018

##### Prehistoric Easter Fun Day

March 31

##### Walton on the Naze Fossil Hunt

April 22 @ 12:00 pm - 3:00 pm

##### Hunstanton Beach Fossil Hunt

May 20 @ 12:00 pm - 3:00 pm

##### Iggy Quarry

June 3 @ 12:00 pm - 3:00 pm

##### Fathers Day Fun Day

June 16





# FASHION

MODEL TRENDY ELEGANCE  
STYLE VOGUE BEAUTY GLAMOUR

We are now in full swing of AW 2018 Fashion Weeks and New York has set the precedent. The future is now and it is fiery and forward-thinking. Phillip Plein lifted the bar with an exquisite spectacle, a giant robot that opened the show with the stunning Irina Shayk. His collection combined ski chic with futuristic metallic and sparkly wonders. Plein has rapidly risen to my three favourite designers and it just may have something to do with this season's Chanel influence. From textile to stage, the show seemingly takes inspiration from Chanel's Autumn/Winter 2017 runway show which quite literally lifted off into the Space Age with a rocket on set. The collection was a fantastic amalgam of tweed that glittered and sparkled, a classy touch of fur, après-ski styles and impressive boots. With very similar style, yet equally unique designs Mr Plein grabbed my attention.

From a less luxurious perspective, I mentioned the way in which fashion can and very often does break from its fantastical world and explores ways in which it can use its platform for the greater good. Raf Simons, creative director of the beloved brand Calvin Klein, offered America a moment of reflection executed to perfection. Simons is renowned for his continued recognition of the brand's heritage that he effortlessly intertwines with innovation throughout his campaigns and collections. However, this year was more profound than ever with symbolism of war and destruction. While Harper's Bazaar drew attention to this, they failed to note that the quilted patchwork of American history they described this show to depict, could well be more than a representation of disruptions and chaos in American history. In fact, I propose that the show was a far greater cry towards political chaos of today than that of any other period. To begin with, while it is not unusual for Simons to use Warhol's artworks, they were plastered across the dilapidated buildings of the set. Warhol's main influence was to bring his wide spectatorship to reflect on and question the ways in which we perceive the world around us. Indeed, Simons instigated just that. The buildings are exemplary of a state contrary to America's depiction of itself as the land of opportunity. Instead, we were presented with chaos, collapse and crisis. Somewhat

relatable to many now that Trump has destroyed opportunities, rebound those who believed themselves to be emancipated and with his concerns for the wealthy and the white wealthy alone will cause great struggles for a great deal of industry and individuals. Added to this, the floor was a sea of popcorn, which may have been naively interpreted to symbolise burned-down cornfields. Popcorn had its heyday between the 50s and 90s in America and was highly emblematic of inclusivity seeing as it was one of few widely available luxuries. Nowadays it conjures images of high school students at the "movies" and living life freely and joyfully. Perhaps then Simons' juxtaposed demonstrations of "freedom" and "war" represents the old with the current state of America. In this sense, one could interpret the popcorn to be the bullets of school shootings scattered across the floor, in contrast with the associations we had attributed to popcorn prior to the show. As I have demonstrated, Simons' show was littered with messages, subjective interpretations were widely encouraged, and there's the point: We have to question our perception of what we see around us. Here was an example of ways in which fashion can speak to its audience in a more meaningful way through what is too often perceived to be lavish and vacuous.

This season's general trends are an embodiment of power and grace. The runways sported delicate florals (Oscar de la Renta and Marchesa) and business attire (Prabal Gurung and Eckhaus Latta), animal prints (Tom Ford and Area), brazen boho-rocker (Cecilia Bönström) and neutral tones (LanYu and Ulla Johnson). Silks added a touch of chic to this runway season in the most unexpected way, pyjama cut shirts and wide leg trousers. Finally, all due respect goes to Caroline Herrera as she steps down from her fashion pedestal.

Next month, I will be bringing you something that I have wanted to try for a long time but have never done – a men's fashion report. This will not be the last time I reach out to the male readership, so ensure you keep your eyes peeled over the next few months!

Liss Cranwell



CHRISTCHURCH  
YOUTH PAGE



Maximise the enjoyment of  
your home  
with the professional help of

## **Brimstone**

**Garden Design Services**

in association with

## **SFC Services**

**Design Development Maintenance**  
**Hard and Soft Landscaping**  
**Household Repairs and Building Maintenance**

for free estimates, contact either

**Cliff** 01354 638217 or 078 080 78518  
cliff@brimstonegardendesign.com

or  
**Steve** 01354 638964 or 07725 866445  
sfclifford67@gmail.com

## *Creative Cakes*

*by Karen*

Locally made  
Bespoke cakes & cupcakes for  
all occasions - made to order  
Including gluten free and  
lactose free  
Delivered locally

contact for designs & prices  
01354 638763 - 07939470027



creative cakes by Karen



**Paul Braybrooke**

## ***Oil Fired Boiler Engineer***

**Boiler Servicing & Breakdown Service**

**Commissions**  
**Tank Replacements**

**Phone 01353 777788**  
**07946 735691**



## The Great British Spring Clean

**Fenland residents are being urged to join an army of 'litter heroes' during this month as part of the country's biggest ever litter campaign from March 2<sup>nd</sup> to 4<sup>th</sup>.**

Fenland District Council is backing the nationwide clean-up, which aims to bring around 500,000 people together to clear up litter.

Councillor Peter Murphy, the council's portfolio holder for the environment, said: "Making Fenland cleaner is something everyone who lives, works, learns or plays here contributes to. Our officers and dedicated volunteers do a great job cleaning our streets, but it is a constant battle with people carelessly and thoughtlessly dropping litter on a daily basis. Not only does the spring clean bring everyone together to tackle litter, it also raises awareness of how people should dispose of their litter properly."

A number of Fenland's Street Pride and In Bloom groups are planning litter picks for the campaign, and local schools and community groups are getting involved too. On Friday March 2<sup>nd</sup>, Wisbech Street Pride will be teaming up with staff from Tesco for a joint litter pick, and have invited residents from Axiom Housing Association's Wisbech Foyer to join them. They will be meeting at Chapel Road car park at 10.00am. On the same day, Waterlees Street Pride/In Bloom will begin a litter pick at the Oasis Centre at 10.00am and the Friends of Waterlees Garden Group will also be in action. Orchards Primary School is also organising an event to coincide with the campaign.

Saturday March 3<sup>rd</sup> will see more events scheduled by Street Pride groups in Manea, Doddington, March, Tydd St Giles, Leverington, Elm and Chatteris. Manea Street Pride is meeting at the 'Meat and Eat' Café in the High Street for a litter pick starting at 10.00am, while group members in Doddington will gather at the Clock Tower at 2.00pm. March Street Pride will meet at the George Campbell Leisure Centre at 10.00am, and those in Tydd St Giles will meet at the Community Centre at 10.30am. Leverington Street Pride will also be making a clean sweep, meeting at the Sports and Social Club at 10.00am, and Elm Street Pride will meet at the War Memorial at 10.00am. And in Chatteris, members will gather at the Church Lane car park at 10.00am. In Wimblington, a third community litter pick is being held to see if there is an interest in forming a new Street Pride group there. Volunteers will meet at the Parish Hall at 10.00am. All necessary equipment will be provided by Fenland District Council but those attending must wear suitable clothing and footwear.

**In Christchurch a team will meet at the Community Centre 10.00am to spruce up the village (See p3)**

Anyone wishing to get involved in any of the clean-ups, or wanting to organise their own, should contact Rebecca Robinett, Fenland District Council's Street Pride coordinator, on 01354 654321 or email [robinett@fenland.gov.uk](mailto:robinett@fenland.gov.uk)

The council can provide litter picking equipment and will remove any rubbish collected.

## TV presenter for Channel 5 Nightmare Tenants / Slum Landlords says house in March 'worst' experienced in 27 years!

At the near derelict home the sitting tenant had been rent protected and had lived at the 18th Century two-bedroom cottage for 35 years. The landlord, who lived next door purchased the property with the tenant in situ in 2007, and was the third person to have owned this property during the tenant's occupancy. It turned out that the tenant, who was a compulsive hoarder, had refused any of the landlord's right of access to the property to carry out necessary checks or for maintenance repairs. It has taken the current landlord three years to eventually gain possession after the tenant passed away in October, and her probate solicitors signed a deed of surrender.

TV presenter, Mr Shamplina, the founder of Landlord Action, a specialist in tenant eviction and debt recovery, said viewers will see from the protective clothing worn when they entered the house "It was not a pretty sight, and neither was I!



Entering the property with the film-crew was a stomach-churning experience. **A real-life house of horrors!** From the moment we set foot inside, the stench hit you even with masks on. The bathroom had not been used in its proper capacity in over two years. The floor had given way, and the ceilings were hanging down! I can't even begin to describe the fridge which, appeared to have life of its own!" Mr Shamplina believes more help should have been forthcoming from Fenland District Council who had failed to act quickly enough to deem it uninhabitable, and help a vulnerable tenant, who was in need of support, and an emotional landlord, powerless to do anything about it, has resulted in the property most probably having to be knocked down and rebuilt!

## The Joan Smith Column

### Love Waterways? Volunteer!



We are currently looking for volunteers at Northampton Marina, [Denver Complex, near Downham Market](#), and St. Ives/Houghton locks. Representing the Environment Agency Anglian Waterways team you will be an important source of information for boaters using our waterways and will help with many aspects of our work, so tasks will always be varied. No previous boating experience is required but you must be confident around water.

#### What will you get out of it?

You will learn how our waterways are managed for public use, meet new people, acquire new skills, and make a valuable contribution to providing safe facilities and a warm welcome for boaters and other visitors alike. You will be given appropriate training as part of your induction to the scheme.

#### Who is running this scheme?

[Cambridgeshire ACRE](#) is working in partnership with the Environment Agency to manage this scheme. As a Waterways Volunteer you will be volunteering on behalf of the Environment Agency and will wear an Environment Agency Volunteer uniform. Cambridgeshire ACRE will recruit you as a volunteer, organise your training/networking events and generally support your volunteering activities with the Environment Agency.

#### How do I find out more?

If you want to meet new people, start making a difference locally, or gain new skills and experience, please phone or email scheme coordinator Rachael Brown on 01353 865037, email her at [rachael.brown@cambsacre.org.uk](mailto:rachael.brown@cambsacre.org.uk) and/or, download app from AW (See p.5)



Apologies for my recent absence but as you may know I had a few family issues to deal with. Anyway, hello dear readers. I hope that you will enjoy the tales from my Canadian holiday.



In 2004 my brother's wife died in her sleep and he called some friends nearby and asked them to call me. It was my birthday, and at first I thought it was someone calling to wish me 'many happy returns'. After this I visited my brother every day and in April 2005, whilst visiting there, he asked if my sister Brenda and I would like to go on a months holiday to Calgary with him to visit his daughter, son-in-law, and their children. I said 'yes' but said that I could not speak for my sister Brenda, but I would pop-in and see her on my way home.

When I called in to see her the first thing she asked was how much the fare was. "I never asked!" I said, but as her own husband had passed away just three months after our sister-in-law she thought it was a kind gesture. So, after she'd made a pot of tea, she telephoned brother Ralph and he immediately said that we didn't need any money, it was his treat for us both. So later in April 2005 (I can't recall the date), Ralph picked up Brenda and myself and we all set off for Heathrow to board an Air Canada flight. The flight would be eleven hours.

When we arrived, Ralph's daughter Susan was there to meet us at the airport ready to take us to Elbow Valley in south-west Calgary. There was still snow all around and later in the day I took photos of the driveway. The roads were fairly clear but everywhere else there was a a glistening white carpet. We were still snug and warm in the house as they had under floor heating right through to the garages; they had three! It was a huge house with a private lake in the front of it. They had a small boat for rides around it and fishing. After our first night there they explained that the next day we would go out to the local shops. We waited patiently that night wondering how different shopping in Canada might be? We were to go into town with Ralph's daughter Susan. We ended up being there for the best part of three hours! But more on that next time.

Bye for now

Joan

Joan





# New Fenland Council Leader Chris Seaton rings the changes at the top table!

**He effectively sacked two £8,500 a year cabinet members who had backed him and handed the £8,000 a year Scrutiny Committee Chairmanship to the man he defeated!** Removing both Cllr Michelle Tanfield and Cllr Will Sutton was the major surprise of Cllr Seaton's new line up. Some councillors were bemused too by his decision to remove veteran councillor Fred Yeulett who had planned to stand down next May anyway as Chairman of the Overview and Scrutiny Committee.

However, it was his decision to replace Cllr Tanfield and Cllr Sutton that was regarded as the biggest upset; even though both had been recently de-selected by the Conservatives in their Elm and Christchurch ward. Cllr Sutton had been unsuccessful in appealing this decision, but it was Cllr Tanfield who bore the brunt of much criticism for the tourism element of her portfolio that had been considered 'lack lustre' in recent years. The last meeting of the Fenland Tourism Board was more than eleven months ago!

Councillor Mark Buckton will now be responsible for the leisure and young people's portfolio. He is known to be passionate about tourism and a healthy lifestyle. Two years ago he cycled 400 miles in four days to raise money for the East Anglian Air Ambulance. However, this change may be short lived as Cllr Buckton had already planned to stand down voluntarily next May in any case as he plans to move to Norfolk.

There is growing speculation too that the council may re-visit the decision to hive-off it's leisure centres to a third party management group. Centres operating in this way are thought to be doing much better than before and it is likely that some of the new cabinet members will press for more discussion to be given to such future proposals.

There's a new face too in Cllr Dee Laws who is taking over the Neighbourhood Planning Portfolio from Cllr Sutton. She will want to test out complaints from local agents that there is a back-log in the planning system over approving larger applications. She will also want to ensure that all applications are verified quickly and decisions made within agreed time frames.



Cllr Sutton who is a long term Christchurch villager himself has always been a great supporter of village needs and causes. He played a major part in pushing the development of the village Community Centre project, and indeed was instrumental in revitalising the very magazine you are reading. Cllr Tanfield too, along with Cllr Sutton, has regularly attended Christchurch Parish Council meetings and been very supportive of sports development in the village. It remains to be seen whether their replacements will achieve any more than they did?



Cllr Mike Cornwell

Cllr Will Sutton

Cllr Michelle Tanfield



## J. Mallett Carpentry

All types of carpentry work undertaken including doors, laminate flooring, kitchens.

Contact Jonathan Mallett

t. 01354 638656

m. 07581 368725

jmallettcarpentry@hotmail.co.uk

[www.facebook.com/jmallettcarpentry](http://www.facebook.com/jmallettcarpentry)

[www.tackk.com/jmallettcarpentry](http://www.tackk.com/jmallettcarpentry)

## BRIAN TWEED & SON LTD

Family Butcher  
Town Street, Upwell.

**Tel: 01945 773248**

Fresh beef, pork, lamb and poultry.  
Our specialities are home made  
sausages and burgers.  
Home cooked ham, roast beef,  
roast pork and haslets.

## SANDRA KAY

SOFT FURNISHINGS & CURTAINS

HAND MADE (your own fabrics)

01354 638478

## Upwell Computer Repairs

Virus Removal - Upgrades - System Service -  
New Machine setups - Wireless setups -  
Printer setups - Call out repairs

Phone - 01945 772717/07849 778525

E-mail - [upwellcomputerrepairs@gmail.com](mailto:upwellcomputerrepairs@gmail.com)

## A JONES & SON

TELEVISION SALES/REPAIRS/INSTALLATION

FREE LOCAL DELIVERY

FIRST CLASS AERIAL INSTALLATIONS/ADDITIONAL POINTS

26 March Road, Wimblington, March, Cambs PE15 0RN

Tel: 01354 740320

CLOSED ALL DAY TUESDAYS

## Beauty Treatments

By  
**Jane**

**N.V.Q. – i.b.d. – Babtac**

LCN Microdermabrasion Facials  
NEW Oxygen regeneration Facials - less  
outlay than Botox (a celebrity favourite)  
NEW Non-surgical firming lift and tone  
St.Tropez Spray tanning  
Gel pedicures  
Shellac manicures  
Week-end & semi permanent  
eyelashes

Rose Cottage,  
Christchurch  
Telephone: 01354 638378



FENLAND LEISURE PRODUCTS  
**PLAY SOLUTIONS**  
SCHOOLS, PARKS &  
LOCAL AUTHORITIES

Designing and manufacturing  
play equipment in the UK for  
over 21 years specialising in:

- Multiplay Towers
- Net Play
- Aerial Runway
- Outdoor Gyms
- Roundabouts & Seesaws
- Spring Rockers
- Slides
- Trim Trails
- BMX & Mountain Bike Tracks
- Seats & Bins
- Fencing
- Surfacing Solutions
- Bespoke Build Service



**[www.fenandleisure.co.uk](http://www.fenandleisure.co.uk)**

Tel: 01354 638359 Email: [sales@fenandleisure.co.uk](mailto:sales@fenandleisure.co.uk)





MOBILE CATERING

***Freshly cooked fish & chips,  
sausages, chicken and pies.***

**Every Friday at the Dun Cow  
from 5.00 'til 8.00 pm.**

**Call 07756 170 700**

to book us for your  
party, function  
or fund raiser.



## Quiz - Months of the Year

1. "January sick & tired youv'e been hanging on me"; song lyrics by which group?
2. In the song "American Pie" by Don Mclean what did February do to him?
3. Which famous composer wrote "The Wedding March"?
4. "Little April Shower" features in which Disney cartoon film?
5. Name the title of Rod Stewart's first UK No1 hit single?
6. The song "June is bursting out all over" comes from which musical?
7. In the song "Calendar Girls" by Neil Sedaka the lyrics say July is like a firecracker all .....
8. What did August Darnell change his name to when playing with the Coconuts?
9. What is the title of the song that begins "Well it's a long long time from May to December?"
10. Which Elvis song was top of the UK single chart in Nov 1960, "It's Now or Never", "His Latest Flame" or "Return to Sender"?

# MAJESTIC

WINDOWS . DOORS . ROOFING  
BI - FOLDS . CARPENTRY  
CONSERVATORIES  
COMPOSITE DOORS  
HOUSE RENOVATIONS  
GARAGE CONVERSIONS  
FASCIA, SOFFIT, GUTTERS  
FREE QUOTATIONS AVAILABLE

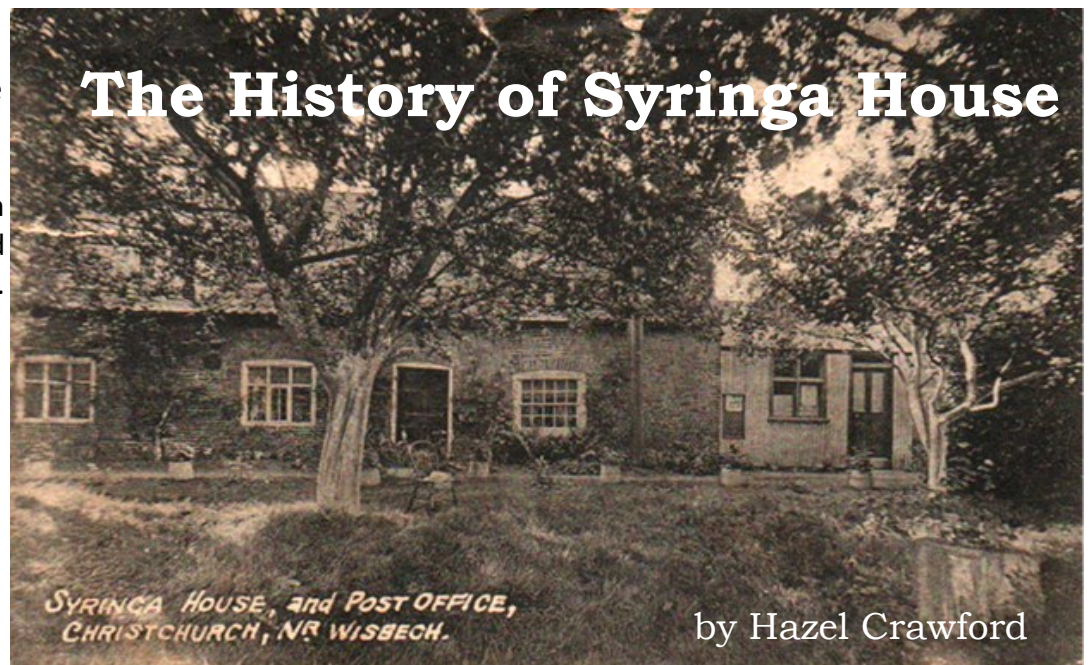
MIDDLE-MASS@LIVE.CO.UK

MOBILE : 07875 745125

OFFICE : 01354 461172

MARCH, CAMBS

We are lucky enough to be the proud 'keepers' of Syringa House in Christchurch, an early 18th century farmhouse located at the centre of the village. This beautiful old building had sadly suffered from lack of maintenance over the years and had been put on the Heritage 'At Risk' register. In fact it was so overgrown I have heard that some of the villagers didn't even know it was there!



'Postcard from 1909 - found inside Syringa House'

Syringa House was Grade II listed by Historic England in 1983 for its special architectural or historic interest. Being built of local gault brick with a pantiled roof and parapetted tumbled gable ends, the interior fortunately retains many of its original Georgian features (1714 to 1830), including panelled doors with Suffolk latches, two encased quarter-turn winder staircases and oak beams to the downstairs rooms. We believe the original building dates from around 1780, although interestingly we have found a floor brick with the date of 1550 carved in to it.

My husband Noel and I purchased Syringa House in 2015. Noel is a builder by trade and with the help of local skilled workmen we have lovingly restored this wonderful property to (hopefully) its former glory. While renovating we discovered two original inglenooks that had been bricked up several times with modern fireplaces, along with a smaller fireplace in the third room, all of which have now been restored. When I was removing the old plaster in the dining room, I found the gable end bricks of an older building which we have left exposed and this is now one of our favourite features of the house. One of the best and oldest finds was inside an unused downstairs cupboard; here we discovered the original wooden ladder that would have been used to access the upstairs before the staircases were put in - the treads being well worn from years of use and the landing it went to boarded over.

It has been a lot of hard work over the past two years and there have been a few tears along the way but we are finally nearing completion. We have been living in the house for the last eight months,

something which on some days seemed like a far distant dream and often a nightmare, wondering what we had taken on.

For the last year I have been fascinated in the history of the house. It was originally a farm with livestock and of course the village Post Office. From my research, the earliest mention I can find about the Post Office has been from an 1883 Kelly's Directory entry (Post Office - Christchurch, Miss Sarah Goulding, receiver; delivery begins 6.30; dispatched at 6.6pm). I have been busy collecting Victorian Post Office memorabilia and we are hoping to open it up as a little museum in the future. I understand that the house also doubled as the local doctor's surgery but I have no information on this, so if anyone has any stories or photos I would be most interested.

I'd like to thank everyone for the many lovely comments we have received on the renovation and I would like to share with you the family history of Syringa House next month.



Syringa House today





# TOWNLEY SCHOOL AND PRE-SCHOOL

Christchurch, Wisbech, Cambs. PE14 9NA

Email: [office@townley.cambs.sch.uk](mailto:office@townley.cambs.sch.uk)

Website: <http://www.townley.cambs.sch.uk>

Tel: 01354 638229

**March 2018**

## Friends of Townley School

Keep the date, the Dog  
Show will be back this year!

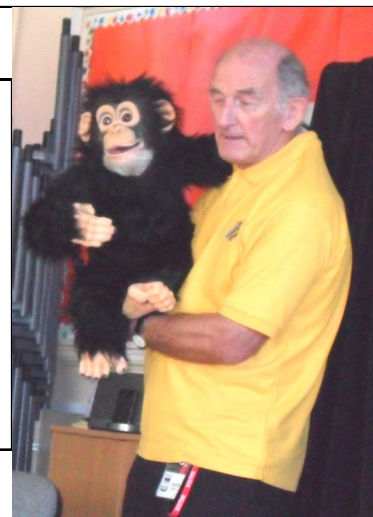
Saturday 9<sup>th</sup> June

## Big Battery Collection

We are going to be entering a recycling project collecting AAA, AA, C and D batteries for the activity. We can win prizes for the amount of batteries we collect. If you have any of these batteries at home please let us have them!

## Light and Life Assembly

Jackie, Peter and Benny (the monkey!) came in for assembly they talked about new beginnings and saying sorry. They told the children about Ely Rocks, as there are decorated stones hidden around Ely. Benny has a stone hidden too, let us know if you find any of the rocks.



## Story Cafés

The class story cafés are an opportunity for parents and carers to get an insight into the learning in their child's class. This term so far Emerald Class have held a poetry themed café, Darter and Cubtail have held a Chinese New Year café and Hawker have learned all about explorers. Emperor have a fun café planned later on in the term. Below are some of the photographs from the sessions.





## PADDOCK & FIELD SERVICES

Equestrian and Small Acreage Specialist



**Andy Jackson**

Orchard Barn  
Flint House Rd  
Lotts Bridge  
PE14 9JN

07801 108 555



andy@paddockandfieldservices.co.uk  
paddockandfieldservices.co.uk

**TOPPING, HEDGE & VERGE CUTTING,  
HARROWING & ROLLING,  
SPRAYING, BALING,  
MACHINERY RENOVATION & REPAIRS**

## Outwell Timber

**For all your Timber and Building Supplies**

**ISLE ROAD, OUTWELL  
PE14 8TD**

**Tel: 01945 77 21 16**

**FENCING, PANELS, TRELLIS  
TIMBER, PLYWOOD, DECKING**

**SAND, BALLAST, GRAVEL**

**SCREWS, NAILS, BOLTS**

**PAINT, SILICONE, HAND TOOLS**

**LOCKS, ELECTRICALS, PLUMBING,  
GUTTERING**

**UNDERGROUND PIPE & FITTINGS**

**CEMENT, MULTIFINISH, PLASTERBOARD**



**live happy!**  
with  
**Slimming World**

**save £5  
join now!**

Just £9.95 on week one  
then £4.95 each week

**DODDINGTON**

**MONDAYS 9:30 AM, 11:30 AM,  
3:30 PM, 5:30 PM + 7:30 PM**

**DODDINGTON VILLAGE HALL,  
BENWICK ROAD**

**TEL: DIANE 07707 547604**

**WWW.SLIMMINGWORLD.CO.UK/**

**SLIMWITHDYNAMICDI**

**\*OPEN BANK HOLIDAY MONDAYS\***

find this delicious recipe online  
f t i s l i m m i n g w o r l d . c o . u k

**Slimming  
WORLD**  
touching hearts, changing lives

## FOUR SEASONS TREE SERVICES

**Qualified & Professional Tree  
and Client Care**



**PRUNING ● LOPPING ● FELLING  
PLANTING ● REDUCING & RESHAPING  
CROWN RAISING ● HEDGE TRIMMING  
THINNING ● POLLARDING ● STUMP REMOVALS  
OVERGROWN GARDENS PUT BACK INTO SHAPE  
FRUIT TREES TREATED ● LOG & WOODCHIP SALES**

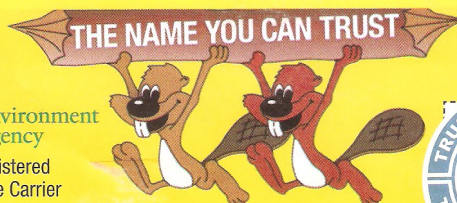
**FREE ESTIMATES & ADVICE WITH NO OBLIGATION**

**For quality jobs at a competitive price call:**

**Home: 01353 721665 - Mob: 07771 707921**

**All work carried out to BS 3998 Standard**

*A genuine family managed business est. for over 30 years - Fully Insured*



**Environment  
Agency**  
Registered  
Waste Carrier



*This company offers a 7 day cooling off period*



**L.W Vehicle Services**  
**Car & Commercial repairs**



Est 2003

- ~ Electrical and Mechanical Diagnostics and Repairs
- ~ MOT Preparation & Testing
- ~ Servicing and Inspections
- ~ On Site Service
- ~ Breakdown / Recovery Service
- ~ Van and Car Sales

Contact Lee on 07717 738796 Or Tel 01354 610172  
March Road, Welney



**S & H Painters and Decorators**

Tel : 01354 638124

Mob: 07905145680

Steven Horne

Christchurch, Cambridgeshire

**P R PARKER**

Established 1978

**General Building and Maintenance**

CARPENTRY	REFURBISHMENT	GLAZING
PLUMBING	AND	PAINTING
PLASTERING	RENOVATION	DECORATING
BRICKLAYING		RENDERING
ROOFING	01354 638380	GUTTERING

**FREE ESTIMATES**

**All Types - Houses - Flats - Shops - Offices**

# Frustration over delayed re-opening of the Wisbech to March rail line

**MP Steve Barclay says “ We fought a Second World War in fewer years than it seems to reopen a few miles of track!”**

The March - Wisbech Railway, otherwise known as ‘The Bramley Line’, opened in 1847. The railway was extended from Watlington to Wisbech in 1848. Both lines were

operated between March and Wisbech until 2000, when the line was subsequently ‘mothballed’. From March to Watlington via Wisbech the line was approximately seventeen miles long and served the following stations: March, Coldham, Wisbech East, Emneth, Smeeth Road, Middle Drove, and Watlington.

Though it has seen better days, March railway station has thankfully retained much of its character. Looking east, you can see the signal box which is still operational. Facing west one can appreciate the fine ironwork supporting the station canopies. Standing on platform two you can turn to see March’s disused platforms which once served The Bramley Line and the railway to Spalding. Trains for Wisbech would briefly head west before taking the curve northwards, skirting the southern edge of Whitemoor Yard before heading out into the Fens. The points guiding The Bramley Line are currently locked-off. You can still see the remnants of the level crossing on Elm road, but these tracks have not carried a train for nearly two decades and are now rapidly being reclaimed by nature.



Steve Barclay says “I will continue to do everything I can to make the case to the Cambridgeshire and Peterborough Combined Authority and the Department of Transport and remain optimistic that



we will get this scheme delivered”. His comments came after he met Secretary of State for Transport, Chris Grayling, and Mayor James Palmer, to agree £3.2 million funding for the next phase of Wisbech Rail, which is to carry out a GRIP3 study which is the next stage of studying the engineering and other costs of



the scheme.

This followed a public spat between Mayor Palmer and John Bridge, chief executive of Cambridgeshire’s Chamber of Commerce since 2004, formerly managing director of a road haulage company and chairman of the Road Haulage Association. Mr Bridge had said last year “We do not believe developing the railway line from Wisbech to March is going to have economic benefit, nor is it deliverable!” Steve Barclay noted that “It seems an odd position for Mr Bridge to try and block a local transport scheme that is supported by three cabinet ministers!”

Mayor Palmer told a Fenland transport conference last October that “Cambridgeshire and Peterborough will only achieve ‘its’ full economic potential if Fenland achieves ‘its’ full economic potential, and this will only happen if we are prepared to overhaul transport infrastructure, both road and rail, across the Fenland area!”



There have been a number of burglaries locally and also thefts of property from vehicles. Residents are warned to be vigilante and make sure vehicles are properly locked, as well as homes and outbuildings.



As we have mentioned before security lighting is a must around rural homes and can act as a deterrent. May we draw your attention to the Neighbourhood Watch co-ordinators telephone numbers at the top right hand corner of page 26 should you see anything suspicious. For any more serious incidents please call the police immediately. However, calling Neighbourhood Watch is also advisable as we are able to make a more rapid response!

## Weather Lore

**"Mare's tails and mackerel scales make tall ships carry low sails."**

TRUE: The mare's tails are caused by high cirrus clouds that have been shaped by the upper winds. Cirrus clouds can signal an approaching front. The mackerel scales are cirrocumulus clouds that are being influenced by shifting wind directions and high speeds and are typical of an advancing low pressure system.



## QUIZ ANSWERS

1. Pilot
2. "Made Him Shiver"
3. Felix Mendelssohn
4. Bambi
5. Maggie May
6. Carousel
7. Aglow
8. Kid Creole
9. "September Song"
10. "It's Now or Never"

# CHRISTCHURCH FOOD FAYRE

**Sunday April 22<sup>nd</sup>**

**10.00am till 4.00pm**

Back by popular demand  
following a successful day in December 2017

**Stalls will include:**

**Smith's of Wisbech - Fruit and veg**  
**Silverfins of Dereham - seafood**  
**Churchill's Ciders, Katie's Cakes,**  
**Bramblebee Farm - meats,**  
**Pat's Preserves and Pickles,**  
**Cheeses, Homemade sweets,**  
**and more**  
**MCK Bedding Plants,**

## **BBQ & HOGROAST Raffle**

**Entry £2 under 16's FREE!**  
**Including LUCKY TICKET**

ALL PROCEEDS TOWARDS HERON FUNDS  
PLEASE COME AND SUPPORT US!

## **Safer Internet Day 2018**

**Safer Internet Day is very important to kids with phones, laptops and iPad's.**

**Townley School have had a special assembly to do with keeping safe online.**

**Here are our main top tips:**

- 1. Never give out personal information.**
- 2. Never make up a fake name or age to get onto social media.**

**We all did Internet Safety Day activities in classes afterwards.**  
**Everyone should try to stay safe online, are you?**

**by Penny**

# Useful Telephone Numbers

Age UK Cambridgeshire	0300 6669860
Alzheimer's Society (Fenland)	01945 580480
Anglian Water – Susan Bull	08457 145 145 101
Christchurch Resident's Association	01354 638990
Churchwarden - Mrs. D. Symons	01354 638352
Citizens' Advice Bureau, Wisbech	01945 464367
Community Car Scheme (to book a journey)	07902 316360
Community Centre bookings	01354 638478
Community Fire Safety Officer	07717858166
District Councillor - Will Sutton	01354 638025
District Councillor - Michelle Tanfield	07908 707129
Electricity Faults - UK Power Networks	105
FACT	01354 661234
Fenland District Council	01354 654321
Floodline	0845 988 1188
Library - March	0354 0455225
National Debtline	0808 808 4000
Norfolk Dial-a-Ride	01553 770310
Parish Clerk - Jane Rees	01354 638131
Parish Councillor - Jill Bliss	01354 638343
Parish Councillor - Richard Lloyd	01354 638956
Parish Councillor - Roger Gladwin	01354 638538
Parish Councillor - Geoff Harper	01354 638681
Parish Councillor - James Hughes	01354 638310
Parish Councillor - Peter Owen (Chair)	01354 638847
Parish Councillor - Nigel Russell	01354 638279
Police - PCSO Sue Clarke	07738025220
Police - Emergency	999
Police - Non Emergency	101
Telephone Complaints	0345 145000
Townley School	01354 638229
Trading Standards	845040506
Train Information	08457 484950
Upwell Health Centre (and out of hours)	01945 773671
Upwell Health Centre - Pharmacy	01945 774934
Vicars - Ian & Lynda Brady	01354 740627
Water Emergencies	08457 145145

## Club Contacts

Art Club - Jan Clifford	01354 638217
Book Club - Sheila Day	07946 635908
Craft Club - Wendy Yates	01354 638448
Gardening Club - Marion Hawthorne	01354 638230
Short Mat Bowls Club - Wendy Keen	01945 772737
WI - Peggy Warby	01354 638339

## Neighbourhood Watch

Colin Steenson - Church Rd (East)	
Sandra Kay - Crown Rd	01354 638664
Shirley Knight - Church Rd (West)	01354 638478
David Yates - Church Rd (West)	01354 638779
Julian Swallow - Upwell Rd (North)	01354 638448
Jackie Wood - Upwell Rd (North)	01354 638679
Simon Freeland - Upwell Rd (South)	01354 638802
Richard Guilford - Area Co-ordinator	01354 638990
David Harrowing - District Co-ord.	01945 870963

## And Finally!...

Have you noticed that whenever I've spoken about a forthcoming spell of bad weather that its never really happened!?

Well - I'm going to talk about it again and hope we never see the 'beast from the East' and the three days of thick snow they have been threatening us with from Sunday night the 25<sup>th</sup> February, to Friday 2<sup>nd</sup> March. Otherwise you might get your Heron's late this month! Just think of all our delivery folks trudging through drifts up to their armpits! But just to be on the safe side I have today (Sun 25<sup>th</sup>) stocked up on coal and logs - Just in case!



So did it happen? Are we still left with a load of slushy remains? Is there still snow on the roof?

Well! Whatever! I'm sure we will have survived!?

Unless? Is anybody reading this?

Hopefully you will have enjoyed reading through your Heron in front of a roaring log fire? Or at least snuggled up with the heating on full? Hmm! I'm making myself feel cold writing this! Think I'm off for a hot toddy!!!

'Till next time - Ed'.

Web links in the Heron are active when viewed in our online version [www.theheron.info](http://www.theheron.info)



# The Richard Hughes Recipe - Smoked Salmon Muffins



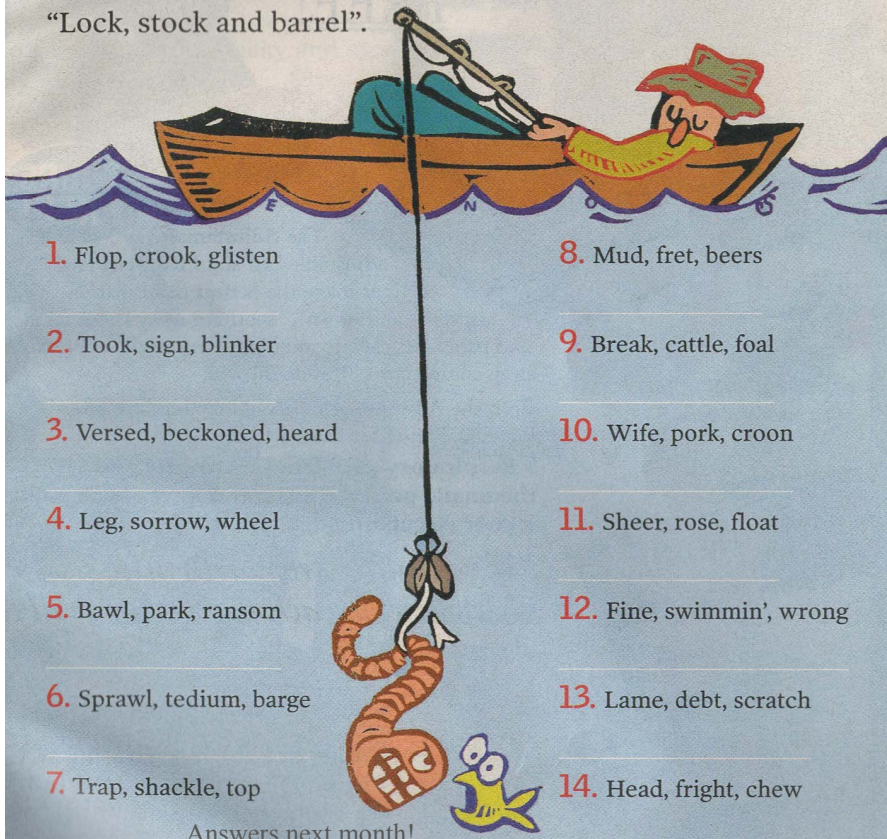
300g plain flour, sifted  
2 x 5ml spoons baking powder  
2 x 15ml spoons capers, drained and chopped  
2 x 15ml spoons flat leafed parsley, chopped  
200ml skimmed milk  
2 x 15ml spoons olive oil  
1 large egg, beaten  
100g smoked salmon  
100g cream cheese

## Pre - heat oven to Gas Mark 4 / 180°C

1. Grease the muffin tins
2. Except for the cream cheese - Place all of the ingredients into a large bowl and mix together until combined.
3. Spoon the mixture into the muffin tins filling 3/4 way up.
4. Add a spoon of cream cheese, and top up with mixture.
5. Bake for 20 minutes, or until golden brown and well risen.
6. Allow to cool.
7. When completely cool remove from the tins and serve.

Makes 10 mini muffins. Double the mix for larger. N.B. You may use cake cases instead of greasing the tin.

**If you're ready, willing and able**, give this puzzle a go. Find a rhyme for each word below so you end up with a familiar three-word phrase in the form “\_\_, \_\_ and \_\_.” For example, the clue “Mock, block, carol” would lead to the answer “Lock, stock and barrel”.



- |                            |                           |
|----------------------------|---------------------------|
| 1. Flop, crook, glisten    | 8. Mud, fret, beers       |
| 2. Took, sign, blinker     | 9. Break, cattle, foal    |
| 3. Versed, beckoned, heard | 10. Wife, pork, croon     |
| 4. Leg, sorrow, wheel      | 11. Sheer, rose, float    |
| 5. Bawl, park, ransom      | 12. Fine, swimmin', wrong |
| 6. Sprawl, tedium, barge   | 13. Lame, debt, scratch   |
| 7. Trap, shackle, top      | 14. Head, fright, chew    |

Answers next month!

I was helping a friend run his roadside farm stand when a man asked how much the eggs were.

“Thirty pence each for the small ones, forty pence for the medium, fifty pence for the large, and fifteen pence each for the cracked ones”, I replied.

“Alright”, he said. “Crack me a dozen of the large ones!”

**And here's one especially for Paul & Viv!**







# AFC CHRISTCHURCH

## 2017-2018 SEASON



**HeronSport**

Fenstanton Reserves  
AFC Christchurch The Magpies  
Littleport Town Reserves  
AFC Christchurch The Magpies

3 AFC Christchurch The Magpies  
2 Chatteris Town Youth Fen Tigers Res  
7 After a disappointing 7-2 losing to  
2 Littleport away due to a depleted  
team The Magpie came back fighting  
this week. Chatteris went up 1 /0 in  
the first 20 min. Christchurch pulled 1 back  
before half time.

1 Christchurch dominated the 2nd  
half but Chatteris sustained an  
injury that led to the match being  
held up for a time. This disrupted  
The Magpies flow and dominance  
of the game. Chatteris scored a  
goal in the final 10 minutes.  
The Magpies 1 Chatteris Town 2.

Pos		P	W	D	L	GD	Pts
1	Little Downham Swifts Reserves	14	13	1	0	48	40
2	March Soccer School Academy	18	11	2	5	37	35
3	AFC Christchurch The Magpies	17	11	0	6	16	33
4	St Ives Rangers Reserves	12	10	1	1	57	31
5	Fenstanton Reserves	16	9	2	5	9	29
6	Wicken First	19	8	3	8	10	27
7	Littleport Town Reserves	15	8	2	5	6	26
8	Chatteris Town Youth Fen Tigers Reserves	17	7	0	10	-21	21
9	Marchester United First	18	5	5	8	-3	17
10	Cottingham United A Team	16	4	4	8	-24	16
11	Berwick Athletic Reserves	21	5	1	15	-57	13
12	Coldham United Res	16	3	2	11	-29	11
13	Somersham Town A Team	19	2	3	14	-49	9

Manager: Peter Chenery Correspondent: Yvonne Chenery

Christchurch Playing Field, Upwell Road, Christchurch, Cambridgeshire PE14 9LL

### RESULTS FEBRUARY

03/02/18	Fenstanton Reserves	3-2 Lost	Away	League
17/02/18	Littleport Town Reserves	7-2 Lost	Away	League
24/02/18	Chatteris Town Youth Fen Tigers Res	2-1 Lost	Home	League

### FIXTURES MARCH

10/03/18	March Soccer School Academy	15:00	Home	League
24/03/18	Coldham United Res	15:00	Away	League
24/03/18	Somersham Town A Reserves	15:00	Home	League

### FIXTURES APRIL

07/04/18	Littleport Town Reserves	15:00	Home	League
14/04/18	Cottingham United A Team	15:00	Away	League
21/04/18	March Soccer School Academy	15:00	Away	League
28/04/18	Little Downham Swifts Reserves	15:00	Away	League

## SPOT THE DIFFERENCE

Copyright 2004 Distributed by Auspac Media email: allencartoons@tpg.com.au

Can you find the  
FIVE differences in  
the cartoon at right?

1: 'S' left off RESERVATIONS. 2: No stickers on mans case. 3: Woman's hair is another colour. 4: Sign on counter. 5: No rubbish in bin.

Spot 10

Any views expressed in The Heron do not necessarily reflect the views of The Heron Editorial Team.  
The team aim to provide a balanced view of village opinions where such views are expressed.