

The Heron

Community Magazine

November 2016

Delivered to homes in Christchurch, Euximoor and Tipps End - £1 where sold

In this issue!

Stay Safe 5th Nov	2
Community Info	3
Editorial	3
Diary Dates	4
Church Services	4
Letters to the Editor	5
Friends of the Heron	5
Alan Russell	7
Harvest Supper 2016	7
Lest we Forget	8
Rectory Exchange pt3	9
Clubs Pages	10&11
CRA report	13
Honey & Flow Hives	15
Minor Injury - Facts!	16
History Mystery	19
Dole Distribution	19
PC Snippets	20
Joan Smith	21
Car Models Quiz	21
Caretaker Settlement	23
Useful Numbers	26
And Finally	26
60s & 70s Disco	27
Syringa House	27
HeronSport	28



STAY SAFE

on 5th NOV

Have fun at an organised display

Details on Page 2

Editorial Team:

Richard Guilford – Editor

Paul Haresnape – Technical Support

Vivien Haresnape – Administration

Enquiries: editor@theheron.info / 01354 638990

Advertising: adverts@theheron.info / 01354 638381

Web Site: www.theheron.info



Skylark
Fireworks Spectacular to
Music on Nov 5th.

Downham
5th Nov 5-30
Denver Playing Field PE38 0EP
Market

LOCAL FIREWORK DISPLAYS

Golden Lion
Sat Nov 19th 7-30
FREE ENTRY
Live Music BBQ
Stonea

Outwell
November 4th 6pm
Playing Field

CAMBRIDGESHIRE FIRE AND RESCUE SERVICE

Fireworks and bonfires can be plenty of fun for all the family to enjoy. The fire service highly recommends going to an organised firework display instead of holding one at home. However, if you do use fireworks or light a bonfire at home, we would ask residents to take on board our safety advice to ensure it is just their fireworks that go off with a bang:

Keep fireworks in a closed box and always follow the instructions.

- ♦ Light them at arms length using a taper and stand well back.
- ♦ Never go back to a lit firework.
- ♦ Never put fireworks in your pocket or throw them.
- ♦ Don't light bonfires in unsuitable weather, particularly in windy conditions.
- ♦ Don't leave bonfires unattended.
- ♦ Build bonfires well clear of buildings, fences and hedges.
- ♦ Never use flammable liquids to start the fire, and never burn dangerous rubbish such as aerosols, paint, foam furniture, rubber tyres, and batteries.

Before you light the bonfire, check that children and animals are not hiding inside and are a safe distance away.

For more information on firework and bonfire safety log on to www.cambsfire.gov.uk, follow us on social media or call 01480 444500.

Community Information

Mobile Library: first Friday each month

in the Lay-by Upwell Road 15:00 - 15:40

Mobile Post Office:

visits Mon - Thu in the Lay-by Upwell Road

Monday and Thursday 16:30 to 17:00

Tuesday and Wednesday 16:10 to 17:00

Fridays - no service

Dun Cow Meal Deal on alternate

Wednesday lunchtimes - 2 courses for £5.50 -

Pre-Booked places ONLY.

This month's dates are 9th and 23rd Nov

Pilates Classes at Townley school are

beginning to take off, numbers wise, but places still

available at the **Core Conditioning Class**,

which includes different exercise types to improve posture, balance, strength and flexibility. It is good

for all ages. Core Class 7:30 to 8.00pm, Pilates

6:30 to 7:30pm both every Monday.

A Christmas Gift idea that you might like

to consider - You now can arrange for your loved ones living outside the area to get the Heron delivered to their door for the whole year! An annual subscription would make a great Christmas present. £25 per year covers the magazine, postage and packing. Application form and details are on the website www.theheron.info or from "Glynan" Crown Road, Christchurch, PE14 9NF

The WI December meeting on 13th

December is to be an open meeting - Lesley Beeton will be demonstrating on - "Arranging Flowers for Christmas". Cost £5 to include Tea/ Coffee and Cake

Places must be booked in advanced, contact President Peggy Warby 01354 638339



Christmas Greetings



With Christmas coming soon, and several people, in the past, using the Heron to pass on greetings to friends, we thought we'd open this service to anyone else who'd like to pen a short greeting at no charge. We will include a page in the December issue provided they are received, in writing, or on email by 25th November at the addresses on the cover or at The Old School, Church Road.

EDITORIAL

Only 58 shopping days 10 hours 38 minutes and 52 seconds ...51....50....49....left till Christmas as I type this! "SHUT UP!" I hear you cry. Well just thought I'd mention it with old Bing Crosby just around the corner, waiting to burst into the refrain of probably his most famous song! Yup! It looks like being a WHITE one!

With the loss of our village shop I guess we'll have to venture a little further afield for our final shopping expeditions. (More on our proposed Community Shop next month once Paul has worked his magic in analysing those Survey Forms!) Two or three years ago on returning from London during a 'white-out' I was diverted through Ramsey due to an accident on the A14. It was dark by then and as I drove down Ramsey High Street it was as though I'd gone through a time warp back to the days of Mr. Charles Dickens, Scrooge, and The Old Curiosity Shop, for that was how Ramsey appeared with golden light spilling out through the Georgian windows of all the old shop fronts; small drifts of snow blending them into the white pavements, and even smaller 'driftettes' around all the tiny window panes; picturesque or what?

There and then I resolved to return to Ramsey, during some future festive season, to do some Christmas shopping of my own. Something I have not yet done, but am determined to do this year especially with the promise of a 'white' Christmas. That night it was already getting late and all I wanted to do was get home!

On another wintry occasion I remember driving out during a blizzard to go to Navarady's for fish & chips, despite protestations from the family about the weather conditions. As I turned onto the Sixteen Foot via Padgett's Road, (I never go out via Jackson's Corner; even in good weather!) the water looked even blacker than night, made so by the density of the falling snow. "I don't fancy going in there tonight!" I thought to myself, my speed slowing. Though I was only doing about 25mph anyway. One could imagine some demon from the murky depths, black as tar, rising at any moment! (The Welney Wader?) I was pleased to get home that night too! Eating our hot fish & chips in front of a blazing fire!

Yes! I know! I've made you feel cold too now! Well get that fire lit, if you haven't already done so, snuggle up, and read the latest Heron. All the usual features plus an array of other interesting articles plucked from various sources, or sent in.

Enjoy, 'til next month

DIARY DATES

Abbreviations for commonly used venues:

TS = Townley School, CCC = Christchurch Community Centre, (new Hall)

TH = Three Holes Village Hall, UH = Upwell Village Hall, WH = Welney Village Hall

If you have any important up and coming events let us know for inclusion here:

Nov 1 st	Christchurch Craft Club - Christmas Decorations - CCC - 7pm
Nov 4 th	"Cake, Coffee and Chat" Parish Church 2-3pm - All Welcome
Nov 4 th	Mobile Library visits - Upwell Rd Lay-by 3-3:40pm
Nov 7 th	Pilates - 6:30-7:30pm - £5 per session, BodyCare conditioning 7:30-8:00pm - TS
Nov 8 th	WI - It should never happen to a Dame - John Lillyman - 7pm - CCC
Nov 11 th	Walking Group - open to all - 1pm - Outside Church
Nov 11 th	"Cake, Coffee and Chat" Parish Church 2-3pm - All Welcome
Nov 12th	Christchurch Parish Church Harvest Supper - 5:45pm - CCC - details page 3
Nov 14 th	Pilates - 6:30-7:30pm - £5 per session, BodyCare conditioning 7:30-8:00pm - TS
Nov 14 th	Christchurch Parish Council Meeting - 7:30pm - CCC
Nov 15 th	Make the most of the Internet - Queen Mary Centre Wisbech - 10:30am-1pm FREE
Nov 15 th	Garden Club - Fish and Chip Supper - 7pm - CCC
Nov 17th	Friends of the Heron - to amend the CVRC Constitution- 7pm Glynan Crown Rd
Nov 18 th	"Cake, Coffee and Chat" Parish Church 2-3pm - All Welcome
Nov 21 st	Pilates - 6:30-7:30pm - £5 per session, BodyCare conditioning 7:30-8:00pm - TS
Nov 23 rd	Christchurch Book Club - 7:30pm - 5 Fen View - contact Sheila Day 07946635908
Nov 25 th	"Cake, Coffee and Chat" Parish Church 2-3pm - All Welcome
Nov 27th	Garden Club - Bury St Edmunds Shopping Trip
Nov 28 th	Pilates - 6:30-7:30pm - £5 per session, BodyCare conditioning 7:30-8:00pm - TS

Parish Church Services

Please accept my apologies for the wrong time of the Holy Communion service for October. Andrew

Nov 6 th	11am	H Chappell, A Day	All Age Worship in parish church
Nov 13 th	9:30am	Rev L Brady	Holy Communion & Act of Remembrance
Nov 20 th	3:30pm	Rev I Brady & L Brady	Evening Prayer
Nov 27 th	11am	B Hopkins	Morning Prayer
Dec 4 th	11am	H Chappell, A Day	All Age Worship in parish church

Every Friday 2-3pm - Coffee, Cake and Chat in the Church building

Saturday 12th November, Harvest Supper, see separate notice Page 3

Saturday 10th December, 10:00-12:00am, Coffee morning in Parish church

The Heron Deadline

The 25th of the previous month is the deadline for all copy. However, due to the amount of copy we are getting, if you leave it till then, we may not have space. So - AS EARLY AS YOU CAN

Advertisers - all our advert rates and conditions can be found on our website www.theheron.info
Business advertisers can book series of six or 12 adverts, paid in advance. Small private ads are charged by the word. Village fundraising events or personal announcements are usually free.

At the time of going to press, all information is as accurate and up to date as we can make it. Changes and updates may be published subsequently. All information contributed by outside agencies, including dates etc., will be assumed to be correct.

Letters to the Editor



Dear Richard.

Lynda and myself as the new ministers to the six Fen churches would just like to take this opportunity of thanking all those who from our various churches helped organize our warm welcome to the Fens. The villages that we have had the privilege to minister in have warmly welcomed us into their community and not only as ministers but also our family and we feel very much at home. Thanks again.

Yours in His service.

Ian.

Reverend I Brady.

Dear Sir

On 25th October, Cambridgeshire County Council welcomed back 26 gritters into its highway depots. From this date the gritters will be on standby, day and night, to grit the roads when necessary.

We are writing to let you know that this year, the gritting routes across the county have been revised and the Council will be reducing its gritting routes; a decision made at Full Council earlier in the year as part of the business plan. This difficult decision has not been made lightly. The Council faces unprecedented savings targets and as a result, winter service has been identified as one area where savings can be made to help meet our financial challenges. I would like to add that although there will be a reduction in the gritting routes, safety of the travelling public remains our priority.

Work to design the new routes has been taking place over the last few months, and as you may imagine is a large complicated piece of work. The new routes have been carefully designed and will be driven for the first time shortly, as soon as our gritting fleet is delivered. This final check may lead to some minor alterations. In addition, we are also altering the way in which we grit. From this winter we have split the county into three sections; North/East, South/West and City. Experience shows us that temperatures and weather conditions vary across the county, and so when we grit will depend on the conditions in each area, not the county as a whole. For example, we may decide to grit in just North/East but not South/West or City. This is a more effective and efficient way of gritting and will, in turn, bring further savings. Furthermore I would like to thank the 70 strong volunteers from Parishes and Community Groups across the county gritting

the paths, helping to keep the local residents safe, during winter.

[As far as Christchurch is concerned, when required, the only roads designated for gritting will be - Upwell Road, from the Sixteen Foot Bank, through to and including Church Road to Padgetts Road and back down from there to the Sixteen Foot - Ed'.]

The new gritting routes for Cambridgeshire can be found here:

www.cambridgeshire.gov.uk/wintergritting

Yours, Highways Service,

Cambridgeshire County Council

'Friends of the Heron' is launched!

As a reader of The Heron, you are invited to come along to Glynan, Church Rd (opposite the school) for an informal meeting at 7pm on Thursday November 17th for the launch of 'Friends of The Heron'

Up until now, The Heron has been produced under the name of 'Christchurch Village Resource Centre' (CVRC) This was set up a number of years ago when The Heron was being produced at Townley School, and there was the vision for a place where local people could have access to computers, photocopier, etc. However, there was less need for this as time went on, and more people began to have computers and printers at home.

When the present team took over the running of The Heron in 2014, we had hopes that CVRC would become an 'umbrella' for more village activities than just the Heron, but this has not worked out in practice, and now that the Community Centre is open, any new activities are usually based there.

The name of the bank account is still Christchurch Village Resource Centre, but this is often confusing to people. The proposal now is to change the name of the account to 'Heron Publishing' and to rename the organisation as 'Friends of The Heron'. So in future it will only focus on the production of The Heron, and any other related publications.

The hope is to form a group of supporters who will be able to give feedback and advice on how they think The Heron is going, and also to form a management committee.

Vivien Haresnape

A message from Sue Norman

I would like to thank all those that sent cards and good wishes to me following my recent operation. They cheered me up no end!



S & H Painters and Decorators

Tel : 01354 638124

Mob: 07905145680

Steven Horne

Christchurch, Cambridgeshire

live
happy!
with
Slimming World

save
up to £5
- ask in group
for more details

DODDINGTON

**MONDAYS 9:30 AM, 3:30 PM, 5:30 PM
+ 7:30 PM**

**DODDINGTON VILLAGE HALL,
BENWICK ROAD**

TEL: DIANE 07707 547604

WWW.SLIMMINGWORLD.COM/

SLIMWITHDYNAMICDI

OPEN BANK HOLIDAY MONDAYS

for this tasty breakfast recipe visit
slimmingworld.co.uk

0344 897 8000



*More people in the UK choose to attend a Slimming World group each week than any other weight loss group.

**Slimming
WORLD**
touching hearts, changing lives

HealthWatch

Your Voice

in health and care

Listening to A&E experiences

Last week our volunteers visited the Emergency Department (EO) at Hinchbrook Hospital to find out about people's experiences of care. The ED, also known as A&E, is the front door to care for many and is often very busy.

We spoke to 64 people in the ED waiting room, the treatment area and the ambulatory care areas.

The visits were unannounced and were done using our power to Enter and View. This is Healthwatch's legal right to visit places that provide publicly funded health or care services, to see and hear how people experience the services.

Kate and the volunteers are now back in this office, and are busy crunching the numbers and assessing the stories. We hope to publish the reports at the end of November or early December.



The Alan Russell Column

Alan's joined other Townley School pupils on a holiday to Colwyn Bay in the late 1940s



Come the morning of our departure, we all met at the school. Mr Alex Scott provided his car and well scrubbed out pig trailer – complete with compulsory net, not thankfully for the children, but all the luggage was stacked in, all of us loaded into cars, goodbyes said with a few tears – after all most of us were going into the unknown and off to March station and on to the 7.45am train.

This must have been most uneventful because I don't remember much about it except I had eaten all my food and drunk my squash by 11 am, as had most others, but the staff must have anticipated this as 'pop' and biscuits appeared thankfully at intervals during the day. Arriving in Wales we were taken by bus to our holiday home. This turned out to be a large house called Wireless College. During term time naval students lived there to study all types of radiotelegraphy for their chosen career in the merchant navy. It consisted of separate dormitories for boys and girls,

bathrooms, a lecture hall, games room and dining and kitchen facilities. Ideally adequate for all of us. The college stood about 50 yards from the promenade with the main railway line some twenty feet up above the road with a large tunnel to give access to the sea front and beach.



The Wireless College - now a museum

In the other direction a shady glade took us past a small café and shop call The Dingle. This led out to a wonderful park of several acres called Eirias Park. Football pitches, paddling and swimming pools!, tennis courts, a large area of children's play equipment and several places to hide if you needed one to have a secretive smoke or whatever took your fancy.

Ordinary, plain but filling meals were provided with a packed lunch for those days when we were

taken out to various places. Miles of lovely sandy beach with the pier about half a mile to our right where pre-war slot machines eagerly took our pennies, which we had saved for but none of the electric operated, mind boggling – to me - machines of today. To our left was the small town of Rhos-on-Sea with its own pier but unfortunately both were demolished for safety reasons after the terrible storms of the 1950s.

To be continued



Colwyn Bay Pier some years before Alan was there

Christchurch Parish Church

Harvest Supper

Saturday 12th Nov 2016

Doors open 5.45, eating at 6pm.

Cold meats, fish, cheeses and salads
plus a dessert.

Followed by entertainment

Rhiannon Rae

singer and guitarist

£7 per head (£5 for children).

All profits to the church.

Raffle on the night.

**Christchurch
Community Centre**

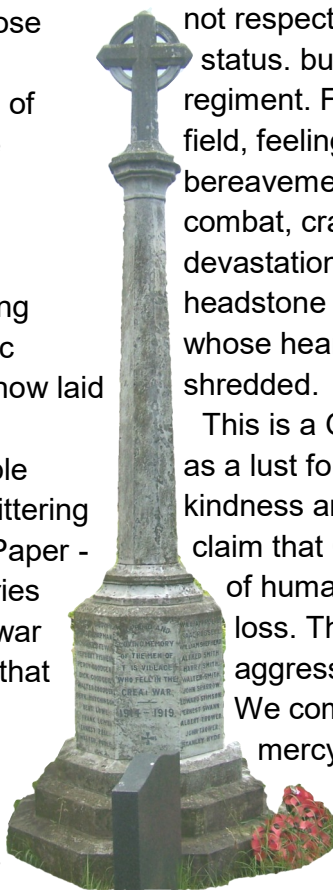
To book a ticket Tel. Helen 638092 or Karen 638781

Lest we Forget! Reverend I Brady.

At this time of the year we remember those who made the ultimate sacrifice. We remember those who have been robbed of loved ones, friends and comrades in the horrors of conflict and those maimed in countless battles.

Red paper poppies help us honour the memory of those whose blood red offering represents all that could be given. Plastic wreaths, tenderly laid, symbolize those now laid to rest. Polished medals, gleaming in November's trench cold light, reflect noble deeds, speak of dispatches recording glittering examples of courage overcoming fear. Paper - plastic and polished, communicates stories of camaraderie. Flags fluttering around war memorials offer mute tribute, standards that are dipped in honour of the fallen.

The moment a candle is lit, it begins to die. We know only too well the grim reality of lives that have not yet been born being snuffed out in the theatres of battle, of bright lights extinguished. For war does



not respect age, carnage does not acknowledge status. bullets and bombs ignore rank and regiment. For God himself stands on every battle field, feeling the searing pain of every bereavement, he bends towards the white heat of combat, cradling the dying weeping over devastation. God stoops to touch each coffin, headstone and unmarked grave, He knows those whose hearts and minds have been shrapnel shredded.

This is a God whose Son was killed by conscripts as a lust for power led them to abandon reason, kindness and basic decent humanity. Let no one claim that God knows not the bloody consequence of human pride, nor that he fails to understand loss. The Prince of Peace was a casualty of aggression.

We commend the souls of the fallen to God's mercy. We commend to God's protection those on active service as they serve their country, as those, in generations before them have done.

Ian.



CHRISTCHURCH ELECTRICAL



Simon Freeland Hill Farm 3 Church Road Christchurch PE14 9PQ

Tel: 01354 638802

Mobile: 07727 046439

- All domestic electrical installation work undertaken.
- No job is too small (Min ½ Hour Charge).
- Free quotations / estimates.
- Very reasonable rates with no VAT.
- References available throughout the parish.
- Part P Registered - Fully Insured - Government Approved.
- Six Year Warranty Offered.



www.elecsa.co.uk

www.trustmark.org.uk

Electrical Safety Register

incorporating



www.electricalsafetyregister.com

An Unlikely Exchange of Rectories - Part 3

In the last two issues of the Heron, we reproduced the first parts of an article by Martin Gibson, which first appeared in the Rectory Society newsletter. This recounted how Revd Henry Sayers, father of the famous writer Dorothy L Sayers, came to be at Christchurch after an exchange of Rectories with Grey Neville, Rector of Bluntisham. He now goes on to tell us a little about their life here.

'Following the exchange, Neville and his family did not long enjoy the grandeur of Bluntisham Rectory. He died quite suddenly on December 28th 1920 following a visit to Cambridge to vote against the admission of women to the University to take their degrees. Dorothy Sayers may have thought Neville's death was justified divine punishment.

Sayers on the other hand remained at Christchurch until his death in 1928 aged 74. The evidence is that he was both a popular and highly conscientious Rector. He even reached out to, and was warmly accepted by, the large number of non-Anglican churchgoers in the parish. *(This was in an age when 'church' and 'chapel' people did not always get on very well with each other. VMH)* The tribute printed in the March Deanery Magazine that followed his death states he was "loved by all in the parish, whatever their denomination." The Deanery Magazine continues: "His generosity was unequalled, especially so in rendering personal services, such as taking people to and from the parish in his motor car. Many a person was thus enabled to visit friends in hospital, etc." Sayers was also highly dutiful in his conduct of church services at Christchurch: "For the eleven years he was in charge of the parish he never missed a Sunday, taking his holidays in short spells between Sundays."

Our best record of what life within Christchurch Rectory was like is provided by a 1919 letter written by Dorothy's friend Eric Whelpton: "Dinner was served in a pre- War

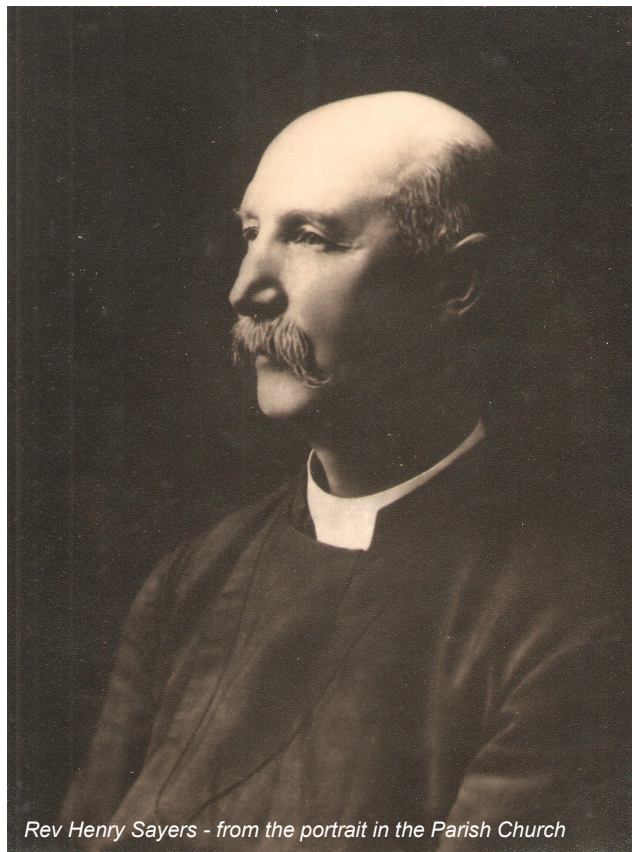
atmosphere; a trim maid waited on us, and both Dorothy and her mother wore evening dress; I wore a dinner jacket, a garment still considered rather informal." *(He was making a joke here. Dinner jackets, which we now think of as formal wear, were becoming more popular than the tail coats and white ties which gentleman would previously have worn when 'dressing for dinner', but some people must have thought they were a bit modern! VMH)*

Whelpton goes on to describe Mrs Sayers: "Her grey haired mother wore a dark dress trimmed with beautiful old lace, and impressed me as being a distinguished gentlewoman, very far from being worn down by her duties as a vicar's wife." In turn Whelpton thought Reverend Sayers "an excellent host, a fine scholar and a well-bred gentleman."

While the Rectory at Christchurch may not have been as large and attractive as the Rectory at Bluntisham, its garden was an impressively sized three acres, as Dorothy records boasting to her Oxford landlady, in a letter home in 1918. From that garden her mother despatched fruit, flowers and vegetables to her daughter in Oxford.

After Henry's death the first meeting of the Christchurch Parochial Church Council agreed that a Memorial in the form of a marble tablet would be erected within the church. It was to be paid for by a house-to-house collection undertaken by the lady members. The collection raised £24 12s 7d and that

sum, raised from his largely poor parishioners, was further testament to the affection in which he was held. However, before the stone was installed Mrs Sayers died on July 27th 1929. She lies buried beside her husband in the graveyard at Christchurch. As a result the marble tablet carries the following inscription: "IN GRATEFUL MEMORY OF THE SERVICE OF HENRY SAYERS, PRIEST: FROM 1917-1928 RECTOR OF THIS PARISH AND OF HELEN MARY, HIS WIFE. THIS TABLET IS PLACED BY THE PARISHIONERS".



Rev Henry Sayers - from the portrait in the Parish Church

Reproduced by kind permission
of Martin Gibson

**Minutes of the meeting
held in Christchurch
Community Centre on
October 11th 2016**



Members were welcomed by our President Peggy Warby.

Apologies from Susan Quail

Minutes of the previous meeting were approved and signed as correct.

Correspondence: Federation forthcoming events were given to members, including make Your Own Christmas Cake Topper & Jigsaw Morning. An Invitation from Welney WI to celebrate their 90th Birthday in November.

Transport was arranged for our visit to Wimblington & Stonea WI.

Susan Norman was thanked for her work as secretary over the last 7 year and was given a token in appreciation.

Nominations for the Committee for 2017 will be taken at the November meeting, members were asked to consider having their names put forward, as new faces with different ideas are always welcome.

A reply to our letter regarding the closure of the MIU from Steve Barclay was read to members, he assured us he would do all in his power to keep these hospitals open. The Isle of Ely Federation WI are holding an open meeting at the Neale Wade Academy, March on October 21st at 7pm to discuss this issue.

Finance: Treasurer gave her report.

Speaker: Stephen Horsburgh talk with slides on Foot Care, made everyone realise how important it is to take care of our feet, and the consequences if we don't.

Stephen was thanked by our president.

Competition: A handmade pair of Baby Booties. Peggy Warby 5*- Sandra Kay 5 – Ann Hicks 5 – Belinda Gladwin 5 – Anne Atkinson 5 - Margaret Sparrow 5

November Meeting – Speaker John Lillyman – It should never happen to a Dame Competition – An Evening Bag Raffle prizes - Doris T Rolfe, Val Parker, Susan Quail, Margaret Hayes



Art Club

Our group is friendly and relaxed. We are all enjoying the sessions and would love to welcome some more



members. We have a tutor to lead us, but we all can learn as much from each other and gain in confidence. All artists have their own special style and approach so we have a lot of variety and some very good art

In our October session we were concentrating on drawing techniques and pastels.

Our next planned sessions for November will be Water-soluble pencils and Pen and Wash techniques.

The picture is folk having fun trying out various ways of using a variety of different techniques.



Do contact Sandra (638478) or Jan (638217) for more information, or pop along

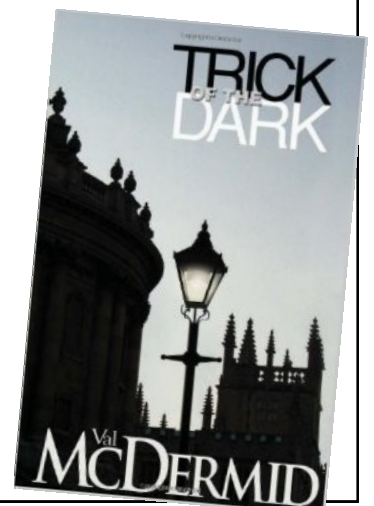
during the session to see what we are up to. We meet on the 2nd and 4th Tuesday of the month at 10am to 12 noon. (term time).

Christchurch Book Club

Book Club met on 26th October. We had been reading 'Salmon Fishing in the Yemen' by Paul Torday. We all enjoyed reading this book, and described it as 'a breath of fresh air'!

We will be meeting again on Wednesday 23rd November at Sue's, 5 Fen View. We will be discussing 'Trick of the Dark' by Val McDermid.

New members are always welcome. For more information, contact Sheila Day on 07946635908



Christchurch Garden Club

JENI CAIRNS PAYS A VISIT

The members and guests undeterred by the rain and cloudy skies, began arriving early on Tuesday 18th October, determined to get a good view of our guest speaker, Jeni Cairns.

With the aid of the hall's new PA system and a borrowed screen, she spoke for over an hour on the trials and tribulations of designing, funding and building an award-winning garden.

Some months earlier the club had organised a day trip by coach to the RHS Hampton Court Flower show, where the members could see for themselves, the working wetland garden that Jeni designed and built for the RSPB at Welney. The garden was sponsored by HSBC and won a Gold Best in Show.

With the aid of still pictures and a running commentary from Jeni, who, as it turns out, is also a first-class artist, able to turn a rusty old oil drum into a work of art, the audience watched a muddy mess turn into an outstanding prize winning garden. Many of the clever uses for recycled materials had at least some of the members thinking about the contents of their garden sheds, so expect some works of art to begin cropping up in gardens near you very soon.

There are still some tickets available for the club's annual Christmas trip on Sunday 27th November. This year the trip is by coach from Christchurch to Bury St Edmunds market. The Christmas market is joined on to the regular market so will combine to give a great shopping experience. The shopping centre is also going to be open as will the local pubs and restaurants. So, plenty of chance to rest those aching plates of meat.

The next meeting at the Community Centre on Tuesday 15th November will feature another club favourite, the Fish and Chip supper. The evening will be catered again this year by Fenland Mobile Catering who did such a great job last year the

members can hardly wait! Bingo has also been requested and will be on the menu. If you have yet to put your name down and your order in, please call soon.

Next month the Raffle prizes will be donated by



Frank Whiting, David Yates and Pauline Murfit.

To go on the Coach Trip (members £10.00 non-members £13.00 brilliant value.)

To come along to the Fish Supper or any other enquiry Call Marion on 01354 638 230.

We had our AGM in the August meeting. The results were Wendy Yates chairperson, treasurer Peggy Warby, club Officials. Sandra Kay and Sandra Lloyd Jo



and Amy are to share the secretary job. I would like to thank everybody for their help.

Our October meeting was to be an autumn flower arrangement. Unfortunately It was cancelled. We made Christmas cards instead, see photo by Susan. Bubbles brought along a large basket of flowers which where to go to the school for their harvest festival.

You will need your sewing kits for November meeting. Margaret Sparrow is going to show us how to make Christmas Decorations. Wendy.



BUILDING DECONSTRUCTION

Buildings bought and all materials recycled/
upcycled

Pre 1930s preferred
but all buildings considered
from barns to cottages
including site clearance

FREE QUOTATIONS GIVEN

We have a large number of salvaged
ARCHITECTURAL ITEMS FOR SALE
Bricks & other building materials,
roof trusses etc.

Firewood, plants, and hanging baskets

COME IN AND SEE US
AND HAVE A BROWSE!

Call Matt or Sarah Lawrence on
Tel: 01354 638977 or, Mobile: 07856 291787
Toll Farm, Ha-Penny Toll Road,
Three Holes, Norfolk,
PE14 9LJ
Email: buildingdeconstruction@yahoo.com

A.R. CLINGO

FUNERAL DIRECTOR

Family Independant
Business

Private Chapel of Rest
Personal Attention

24 Hour Service

Full estimates given at all times

Golden Charter
Funeral Plans



Pinfold House
St. Peter's Road
Upwell, Wisbech
Phone 01945 772502



FENLAND LEISURE PRODUCTS PLAY SOLUTIONS SCHOOLS, PARKS & LOCAL AUTHORITIES

Designing and manufacturing
play equipment in the UK for
over 21 years specialising in:

- Multiplay Towers
- Net Play
- Aerial Runway
- Outdoor Gyms
- Roundabouts & Seesaws
- Spring Rockers
- Slides
- Trim Trails
- BMX & Mountain Bike Tracks
- Seats & Bins
- Fencing
- Surfacing Solutions
- Bespoke Build Service



www.fenandleisure.co.uk

Tel: 01354 638359 Email: sales@fenandleisure.co.uk



March Stationery & Print

Booklet Printing
Business Cards
Digital Photos
Leaflets
Newsletters
Banners

01354 656614

sales@marchsp.co.uk

5 Fenland Walk, March, PE15 8TW

Christchurch Residents Association

There were twelve members present at this month's meeting. The minutes were accepted and there were no matters arising. Lorry parking on the footpath was again discussed but following last month's meeting the 'message seemed to have got through via the grapevine' as on the last two occasions the offending vehicle had been parked on the road outside the church.

Speedwatch training was due to be held this coming Saturday 29th October at The Old School at 9.00am. It was hoped that weather permitting we would get to use the equipment 'hands-on'.

Richard had ordered the new Dog Poo posters and other notices and the campaign would be stepped up again pre-Christmas. There were several new residents in the village with dogs but are they the culprits?

There had been a very poor response to the Community shop survey. Paul Haresnape would be analyzing the responses prior to a meeting with ACRE on the 8th November when the final decision would be made re its viability and potential funding.

There was no further news on the village bus service but Hicocks were again mentioned as running a service to Three Holes. Members could not understand why this issue could not be resolved despite crossing county borders between Norfolk and Cambridgeshire.

Members were reminded of the 60's-70's Disco to be held on the 3rd December, the Harvest Supper on Saturday the 12th November, and the Garden Club's Christmas Shopping Trip to Bury St. Edmund's Christmas Market on the 27th. All were encouraged to attend these events.

There would also be a notice in November's Heron offering readers to send in Christmas Greetings to friends and family in the December issue.

In any other business Simon Freeland announced that the new 'defibrillator' was installed, working, and ready for use. It is mounted on the outside wall in the car park at Townley School and so would be available for use at any time. Training sessions had already begun.

The meeting closed at 8.45pm.

Next meeting would be February 22nd 7.30pm at The Old School.

Stonea Rail Bridge Crash!



A driver had a lucky escape after his van crashed into the railway bridge at Stonea, on 3rd October at the level crossing and underpass just outside The Golden Lion public house. Police officers and a team from Network Rail were in attendance.

The driver was uninjured, however the trains were stopped for several hours while the bridge was inspected.

Luckily the police who attended the scene were a little more on the ball than those who attended the incident below!....

A Bridge too Far!

A lorry driver was driving along on a country road. A sign came up that read "Low Bridge Ahead". Before he realised it, the bridge was directly ahead and he got stuck under it. Cars were backed up for miles. Finally, a police car arrived. The policeman got out of his car, walked to the lorry's cab and said to the driver, "Got stuck, then?" The lorry driver replied, "No. You see I was delivering this bridge... and ran out of diesel"



Farmers/Craft market and Coffee Shop

Lakesend Village Hall
starting 7th Oct 10am-3pm then
every Friday until March 2017

BRIAN TWEED & SON LTD

Family Butcher
Town Street, Upwell.

Tel: 01945 773248

Fresh beef, pork, lamb and poultry.
Our specialities are home made
sausages and burgers.
Home cooked ham, roast beef,
roast pork and haslets.



Tel: 01945 772802
Mobile: 07768 397626
Fax: 01945 773159

Golding Feeds & Nursery Ltd

For all of your Pet, Animal & Garden Requirements
Hall Road, Outwell
Wisbech, Cambs. PE14 8PE

Open 7 days a week: Mon - Fri 8am - 6pm
Sat 8am - 5pm
Sun 9am - 2pm



email: taglodge@aol.com
www.goldingfeedsandnurseryltd.com



The Dun Cow

Green Lane, Christchurch, PE14 9PG

Weekdays open from 5.00 pm
Fri, Sat & Sun open from 12.00 noon
Sunday Lunches ~ 12.00 - 2.30

Sat Nov 5th 8pm - Music Quiz with FREE Hot Dogs

Alternate Wednesdays 9th & 23rd Nov - MEAL DEAL 2 courses for £5.50 - Pre-Booked ONLY

Bookings - 01354 638323 - Bookings

Happy Hours
Friday 5-6pm
Saturday 6-7pm
All Draught beers £2.50/pint

SANDRA KAY

SOFT FURNISHINGS & CURTAINS

HAND MADE (your own fabrics)

01354 638478

Caroline's Flowers

For All Your Floristry Needs

West Star Farmhouse, Upwell Road,
Christchurch, PE14 9LJ

Find us at Caroline's Flowers on facebook



01354 638038 / 07915 647453

carolinesflowers@outlook.com

Sick of Low Building Society Rates?

We can introduce you to other options offering:

Up to 12% per year, paid monthly. That's £100 per month for £10,000.

Shaun Ginley Asset and Legacy Protection. Tel. 07712 659 292.

Honey & Flow Hives in the UK -

Richard Guilford

You may recall in May's Heron I introduced you to the latest innovation in beekeeping technology, from Australia, the Flow-Hive. The idea being that honey could now be harvested without disturbing the bees by simply turning on a tap. But beekeeping, in the true sense of the word, is not sacrificed as the brood chamber still needs to be maintained with regular checks throughout the year.

However, these new style hives were as yet unproven in the vagaries of the UK's cooler, temperate climate, as opposed to that of sunny Oz. Coupled together with the fact that the years earliest honey harvest in the UK consists almost entirely of rape which is notorious for setting in the comb, with all the inherent problems of extraction. In a Flow-Hive this problem would be exacerbated by difficulty in mechanically splitting the cells in the normal way (see The Heron – May 2016 – page 25).

To this end early difficulties with my new Flow-Hive worked in my favour. We introduced the first swarm into the hive on Saturday 23rd June. On Sunday 24th June they all b*****d off again. "B****y racist bees didn't like the Australian hive!" I thought? The second swarm was introduced the following Tuesday 26th June. This time it took. Within three weeks the brood chamber was getting established with no signs of disease, plenty of young brood, and honey stores developing. But apart from a few intermittent investigations, little or no interest had been paid to the Flow-Frames in the super above.

My frustrations continued for several more weeks when, despite bees investigating the Flow-frames from time to time, there had still been no constructive activity. I resolved to take action! My thinking was that if I painted over the plastic Flow-frames with some molten beeswax from my other hive this might both mask any aroma from the plastic cells and encourage my bees to draw out and complete the comb ready for honey storage. It took a great deal of patience but after a series of regular checks over the next six weeks or so – finally – on the afternoon of Tuesday the 30th of August – WE HAD HONEY!!! Well at least in the central comb, but the others were getting filled too by then.



So, it had worked! My wax painting ploy. Or was that just a coincidence? Maybe it just took the bees a little time to get used to the partly formed plastic combs. Maybe with increasing space being required for burgeoning honey stores they just HAD to use the next nearest space available? I'll probably never know for sure. The main thing is me Flow-Hive is now fully functional. Hopefully, by the end of September I will be able to make a small harvest?

Remember with the Flow-Hive system I can empty each individual Flow-frame separately. So, even if I only drain one or two of them, the hive will still have plenty of honey reserves to get them through the winter. The final test of this new system will be - THE HARVEST! To prove that this new technology does what it says on the hive! I still have a few jars left of this season's first harvest of Rape Seed Honey if anyone is interested. Its strong and unique flavour has so far proved very popular. Christchurch's own MANUKA!?

[N.B. - Actually I am now FEEDING THEM! with liquid unrefined sugar, as they have already begun eating into their winter honey stores!]



Doddington Minor Injuries Unit to survive? - Maybe! By Paul Haresnape

We've all been worried by the proposed closure of the Doddington and Wisbech (and to a lesser extent Ely) Minor Injury Units (MIUs). So we set out to find out what is actually happening and what we can do.

Our thanks are due to Fred Yeulett who flagged up a positive view after the County Council passed a resolution to support the service. Also the WI who put on a meeting with the Local MPs and the Clinical Commissioning Group (CCG), from which we got the bulk of the information below.

The Facts:

1. NO decisions have been made yet!
2. National Standards for units demand they are open every day of the year and till midnight
3. Currently some times of the day staff are underused
4. The Public do not understand when, and what they can use the MIUs for .
5. Closing the MIUs would save £1.3M which is considered 'small beer' vs £1Billion NHS Cambridgeshire Budget

Reasons to be hopeful:

1. Local MPs, backed up by public protest have successfully pressed the case that the National Standards do not fit with our Rural conditions, meaning the 'open-to-midnight' may not apply
2. Of the six options being considered they are leaning towards (but not decided) a model where the MIUs are developed into 'Rural Urgent Care Hubs' - this would mean reorganising so staff are not being underused, and are upskilled to allow them to complete consultations without being referred on (somewhere else) to more skilled staff

What we can do:

1. Continue local pressure to demonstrate the concern, and worry about some options
2. Ask to be referred to Doddington or Wisbech when GPs are looking to send you for treatment
3. Visit the MIUs if you have a non-life threatening injury to take pressure off A&E

4. DO use 111 service which has been reformed and WILL be able to help or direct you to the right service. Including for mental health issues
5. When preferred option is published in January PLEASE go to a Public Meeting and give your views on the Preferred Solution



HANDYMAN/GARDENER

NO JOB TOO SMALL

REASONABLE

HOURLY/DAY RATES

All types of gardening -
mowing, hedge trimming,
weed clearance etc.

Gutter clearance, repairs,
and all sorts of other
handyman jobs.

call - RYAN or ARIANNE

on 01354 638990 or

Mobile - 07841516379



L.W Vehicle Services
Car & Commercial repairs



Est 2003

- ~ Electrical and Mechanical Diagnostics and Repairs
- ~ MOT Preparation & Testing
- ~ Servicing and Inspections
- ~ On Site Service
- ~ Breakdown / Recovery Service
- ~ Van and Car Sales

Contact Lee on 07717 738796 Or Tel 01354 610172
March Road, Welney



Maximise the enjoyment of
your home
with the professional help of

Brimstone

Garden Design Services

in association with

SFC Services

Design Development Maintenance
Hard and Soft Landscaping
Household Repairs and Building Maintenance

for free estimates, contact either

Cliff 01354 638217 or 078 080 78518
cliff@brimstonegardendesign.com

or

Steve 01354 638964 or 07725 866445
sfclifford67@gmail.com



Paul Braybrooke

Oil Fired Boiler Engineer

Boiler Servicing & Breakdown Service

Commissions
Tank Replacements

Phone 01353 777788
07946 735691

**Beauty Treatments
By
Jane**

N.V.Q. – i.b.d. – Babcac

**LCN Microdermabrasion
Facials**

**St.Tropez Spray tanning
Gel pedicures
Shellac manicures
Week-end & semi permanent
eyelashes**

**Rose Cottage,
Christchurch
Telephone: 01354 638378**

AQUA & FLAME

Gas Safe Registered

CSCS Registered

All Plumbing and Heating work undertaken

**Alan Curtis
64 Church Road
Christchurch
PE14 9PQ**

Home 01354 638733 Mob 07976205695

All tiling including floors

Underfloor heating

All Electrics

All Plumbing

**All work carried out by
certified installers**

Free estimates and design consultation

MAJESTIC

WINDOWS . DOORS . ROOFING

BI - FOLDS . CARPENTRY

CONSERVATORIES

COMPOSITE DOORS

HOUSE RENOVATIONS

GARAGE CONVERSIONS

FASCIA, SOFFIT, GUTTERS

FREE QUOTATIONS AVAILABLE

MIDDLE-MASS@LIVE.CO.UK

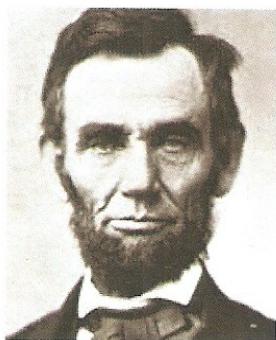
MOBILE : 07875 745125

OFFICE : 01354 461172

MARCH, CAMBS

History Mystery

Have a history teacher explain this----- if they can.



Abraham Lincoln



John F Kennedy

Abraham Lincoln was elected to Congress in 1846.

John F. Kennedy was elected to Congress in 1946.

Abraham Lincoln was elected President in 1860.

John F. Kennedy was elected President in 1960.

Both were particularly concerned with civil rights.

Both wives lost their children while living in the White House.

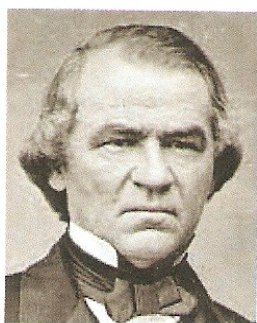
Both Presidents were shot on a Friday. Both Presidents were shot in the head.

NOW IT GETS REALLY WEIRD

Lincoln's secretary was named Kennedy. Kennedy's Secretary was named Lincoln

Both were assassinated by Southerners.

Both were succeeded by Southerners named Johnson.



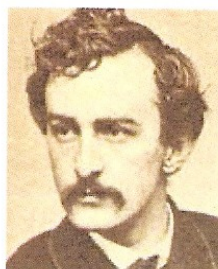
Andrew Johnson



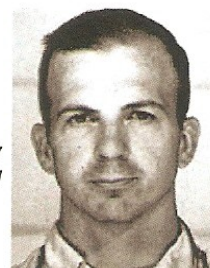
Lyndon B. Johnson

Andrew Johnson, who succeeded Lincoln, was born in 1808.

Lyndon Johnson, who succeeded Kennedy, was born in 1908.



John Wilkes Booth



Lee Harvey Oswald

John Wilkes Booth, who assassinated Lincoln, was born in 1839.

Lee Harvey Oswald, who assassinated Kennedy, was born in 1939.

Both assassins were known by their three names.

Both names are composed of fifteen letters.

NOW HANG ON TO YOUR SEAT

Lincoln was shot at the theatre named 'Ford'.

Kennedy was shot in a car called 'Lincoln' made by 'Ford'.

Lincoln was shot in a theatre and his assassin ran and hid in a warehouse. Kennedy was shot from a warehouse and his assassin ran and hid in a theatre.

Booth and Oswald were both assassinated before their trials. Thanks to Great Hallingbury Highlights

UPWELL (Cambridge) CONSOLIDATED CHARITY

DOLE DISTRIBUTION

CHRISTCHURCH

FRIDAY DECEMBER 2nd 2016
2-3pm

CHRISTCHURCH
COMMUNITY CENTRE

Applicants must be of pension age and have lived in the parish for at least 5 years

All applications to be made in person (Illness the only exception)

Parish Council Snippets

The October Parish Council meeting began with **Graham Chappell from the Fenland Road Safety Campaign** (Charlottes Way) who later wrote on the Facebook page:

I was asked to speak to the meeting itself, about local road safety concerns and developments.

Appreciation was expressed regarding the Local Minor Highways Improvement scheme installation of new signage and checkerboard junction warnings, on the two Sixteen Foot junctions near Christchurch, and the extension of the 50mph speed limit beyond the junctions on the approaching roads.

The continued discrepancy between the speed limits now in place 'on the ground', on the Sixteen Foot (50mph), and also the North Bank Road (40mph), and that still indicated on some, possibly all, Sat Nav devices, was noted, and it was agreed that enquiries will be made to try and resolve this.

The successful testing of posts for supporting safety barrier installation, at the Upwell Road/Sixteen Foot junction, [took place] earlier this year. The next step required to have a chance of taking this scheme forward, should be the pursuit of a design specification and cost estimate for barrier installation here.

Once that is secured, and the likely cost (probably around £25K), clarified, then CPC and FRSC will be in a position to draw up proposals for joint funding options, and will know whether it can be aimed for as part of another LHMI bid, for which the County Council's contribution limit remains £10K, or whether some other funding/CCC budgeting arrangement will be required.

A further local issue noted for further enquiry and intention to support was the reduction of the speed limit through Tipps End, which currently remains 60mph. Enquires will be made through CPC regarding the boundaries of responsibility for this stretch of road, which border Cambs and Norfolk. Contact will be made with colleagues in Cambs CC Highways Dept and Welney Parish Council, for further advice.

Sue Clarke PCSO also addressed the meeting and began by stating a new Inspector was in place who would like to attend the December CPC meeting.

Hare Coursing has been a problem with intimidation from the men—get car details and Registrations if safe to do and call in on 101, or if you see a crime being committed 999.

If you know of a persistent speeder get the details and call S Clarke -number in 'useful numbers' -Ed'.

County Councillor Fred Yeulett expressed concerns that health provision in the area is being overlooked and Cambridgeshire County Council is to debate it. He also pointed up that a review of school transport is to start.

District Councillor Will Sutton will be cleaning the War Memorial on the 5th November and no doubt would be grateful for any help.

Details of **hedges and trees** overhanging public spaces are to be collated with a view to contacting the owners.

Dog mess again was on the agenda. The football pitch is needing cleaning before matches. Some owners are shutting their dogs in the enclosed children's play area—clearly unacceptable. The PC is to consider ways to prevent dog owners taking their pets onto the recreation ground. This also came up in public time when it was asked if the Council could dedicate a specific area in which dogs could be allowed to run free. The idea was rebutted over concerns that it would not be cleaned up by the owners, and that it may be a place where diseases could be transmitted between animals. Are there other options?

The Village is badly signposted, was a request going back some months and nothing has occurred. There is no sign on Padgetts Road marking the Christchurch village from the Tipps End direction, however at the Manea Corner there is a sign pointing to Christchurch 2½ miles. If you follow Padgetts road for that distance you would end up on the Sixteen Foot bank, having missed the village. The Clerk has taken on the job of arranging for signage to be installed.

There is poor signage of Christchurch out of March, there not being a sign visible from March centre pointing up St Peter's Road.



Macmillan Coffee Morning

A big thankyou to all the helpers and cake makers and every body who came and supported us.

We raised £471-60

Thank you all - Sandra

The Joan Smith Column



I had worked at Jermyn's for two and a half years, and very much enjoyed it, but...

A new opportunity presented itself when I spotted an advert in the window of West Wynch Post Office. It was for a home help for three days a week; Monday, Wednesday, and Friday; which fitted perfectly with my Customagic work at Jermyn's on Tuesday, Thursday, and Saturday. So I would then be working 'full-time' but doing two different jobs.

Being a bit of a workaholic I rang the number in the ad. after 6.30pm, as it said, and explained that I lived in the village, and worked part-time in King's Lynn. No one else had applied for the job at the time and the lady I spoke to explained that they needed some extra help as her husband was in the process of setting up a new printing business and needed a collator for medical and research journals.

She offered me an interview for the position but this would not take place for another six weeks. Originally they wanted me to go on a Saturday but I explained that I couldn't as I had a commitment at Jermyn's. I suggested Friday morning but she explained they would both be working then. Eventually we agreed that I would go over on Friday evening at 6.30pm. I found out that the Andersons were both in Education. He was Headmaster and his wife was a Geography teacher at the local Convent School, which is now closed. When the time for the interview finally arrived I was asked how many 'A' levels I had and if I had a degree? The simple answer was I had none! I told them that I had left school at fourteen and had to go to work in a Doctors house, but that I was a hard worker and a fast learner, and would give anything a try whatever it was.

The job was basically as a nanny looking after two girls of five and seven years, if they were ill and at home, and some housework and cooking; in other words anything that needed to be done. They both asked me for a reference and I explained that, before Jermyn's, I had been at my previous job for over fifteen years, and only moved to West Wynch because my husband had been given the Managers job at the local bakery. I would see that I got a reference later but they informed me that I could make a start with them anyway, but not for four to five weeks. They would be on holiday until then.

Having settled in to working for the Andersons I was really enjoying the job when they asked if there was a possibility that I could work for them 'full-time'. So I gave in my notice to Customagic. *To be continued*

Car Models Quiz.

Thanks to John Murray for another brain teaser

Some are classics!

1 point for model and 1 for the make

1. Not a dove
2. Gracie's famous Island
3. Large stinging flyer
4. Egyptian Goddess from a River
5. The first car to hover
6. Very sharp cutter
7. Precious blue gemstone
8. A sure sign of Spring
9. Little red gemstone
10. An announcer with a trumpet
11. Very naughty little girl
12. Thrown in sport as well as war
13. Italian Mountains
14. Mountain Wild Cat
15. Imaginary little fairy man
16. Arabian curved sword
17. High leaping antelope
18. Cavalryman
19. Wild American horse
20. Favourite Xmas bird

Answers page 25

Jubilee Handyman Services

Window & Gutter cleaning

to

Gardening & Maintenance
No Job Too Small

Ring Lee or Emma

01354 638 098 / 07486 397 510

J. Mallett Carpentry

All types of carpentry work undertaken including doors, laminate flooring, kitchens.

Contact Jonathan Mallett

t. 01354 638656

m. 07581 368725

j.mallettcarpentry@hotmail.co.uk

www.facebook.com/jmallettcarpentry

www.tackk.com/jmallettcarpentry



MOBILE CATERING

*For freshly cooked fish & chips,
sausages, chicken and pies
every Friday at the Dun Cow
from 5.00 'til 8.00 pm*

For enquiries/quotations call:

07756 170 700

We also cater for private parties,
functions, charity events



P R PARKER

Established 1978

General Building and Maintenance

CARPENTRY
PLUMBING
PLASTERING
BRICKLAYING
ROOFING

REFURBISHMENT
AND
RENOVATION
01354 638380

GLAZING
PAINTING
DECORATING
RENDERING
GUTTERING

FREE ESTIMATES

All Types - Houses - Flats - Shops - Offices

Townley Caretaker's widow gets settlement at last

After six years of fighting, a caretaker's widow has finally obtained a settlement following the untimely death of her husband.

Richard Coxall died after calling 999 from Townley School, where he was working alone during the half-term break. Paramedics quickly arrived at the scene, but despite being able to see the stricken 48-year-old, they could not reach him because the building's doors were locked.

In October. The Peterborough Telegraph reported that following the death, Michelle, Richard's wife, instructed expert medical negligence lawyers at Irwin Mitchell, to investigate her husband's care under George Clare Surgery in Chatteris, Cambridgeshire, which Richard visited 11 times in the six months prior to his death on April 11, 2011. His last appointment was just two days before his death. The firm discovered that, despite having a history of asthma in childhood and again in 1998 when he was 35 recorded in his medical notes, one practice nurse wrongly recorded a history of Chronic Obstructive Pulmonary Disease meaning he did not receive the correct long-term care. Anna Stacey, an expert medical negligence lawyer at Irwin Mitchell, representing Michelle, said: "Richard and his family did everything they could to reduce his breathing difficulties, from Richard giving up smoking to re-homing the family cat but his health did not change.

Michelle is still reeling from her husband's sudden death and his loss has resulted in significant distress among their children, one of whom is too frightened to play in the garden in case her mum has disappeared "like daddy did", when she returns. "Richard was also the sole provider for the family, and his loss created a terrible situation whereby Michelle was at home caring for her young daughter while her 17-year-old daughter went out to work to support the family. "While no amount of money will ever takeaway the pain and distress of losing Richard, we are pleased that the family can now be



Richard and daughter

provided for so they can focus on supporting each other without the worry of mounting debt." The cause of Richard's death was recorded as cardiac arrest due to cardiac arrhythmia induced by breathing problems caused by acute severe asthma. After learning of Richard's death from the school's head teacher, Michelle was told that paramedics

had had to call police to break down the door to get to Richard but, despite the best efforts of the emergency services, by the time they reached him it was too late. Michelle, 50, said: "The one person I want to talk to the most is the person who isn't here anymore and this realisation hits me every day. I have to hold it together for the sake of my children, but there are times when I feel very alone." Nothing can ever make this better, but by talking about what happened to Richard I hope lessons will be learned which prevent any other family going through what we go through. "Richard would have been alive today with the correct care. There were so many opportunities missed in the months leading up to his death and I hope by taking legal action those involved will have sat up and taken notice of the risks to patients presenting with undiagnosed respiratory illness. Put simply, I hope lives can be saved."



PADDOCK & FIELD SERVICES



Equestrian and Small Acreage Specialist

Andy Jackson

Orchard Barn
Flint House Rd
Lotts Bridge
PE14 9JN

07801 108 555



andy@paddockandfieldservices.co.uk
paddockandfieldservices.co.uk

TOPPING, HEDGE & VERGE CUTTING,
HARROWING & ROLLING,
SPRAYING, BALING,
MACHINERY RENOVATION & REPAIRS

Outwell Timber

For all your Timber and Building Supplies

ISLE ROAD, OUTWELL

PE14 8TD

Tel: 01945 77 21 16

FENCING, PANELS, TRELLIS
TIMBER, PLYWOOD, DECKING

SAND, BALLAST, GRAVEL

SCREWS, NAILS, BOLTS

PAINT, SILICONE, HAND TOOLS

LOCKS, ELECTRICALS, PLUMBING,
GUTTERING

UNDERGROUND PIPE & FITTINGS

CEMENT, MULTIFINISH, PLASTERBOARD

**Personal
Trainer**
— FENLAND —

Personal Trainer Fenland



DROP A DRESS SIZE IN 1 MONTH



Lifestyle Transformations - Safely lose weight
the right way so you keep it off and feel great



Performance for sport - Maintain great fitness
levels and improve in sports as an athlete



Increased Confidence - Mindset allows you
to remove the barriers that hold you back in life



Call us for a FREE consultation today - We are here to help

Entrust your health to a world class coach for world class results

info@personaltrainerfenland.co.uk

Tel : 01354 638 589 - Christchurch

Total Voice Services

Total Voice will support you to:

- Talk about your situation
- Identify what you want to happen
- Make a plan and work towards it

Sometimes you might want us to:

- Explain what rights you have
- Find out information for you
- Let you know the choices you have
- Help you make important decisions
- Help you prepare for meetings
- Go to meetings with you or on your behalf
- Support you to raise concerns or make a complaint



0300 222 5704

lvcp@voiceability.org

www.totalvoicecp.org

Who can use Total Voice services?

We support Adults, Carers and Children and Young People Looked After or In Need. Our service can support people with:

- Physical disabilities
- Learning disabilities
- Autism
- Mental ill-health
- Sensory impairments
- Social or health care needs
- NHS Health complaints

To find out more information about which services you can access, please visit www.totalvoicecp.org or get in contact with us.



March Surgery Day!

Do you want to explore heritage in the Fens and need funding?

Find out how we can help.

www.hlf.org.uk/EastofEngland



Book a 30 minute session with Dawn Bainbridge, Heritage Lottery Fund Development Officer, for an informal chat about how the Heritage Lottery Fund can help you to celebrate and share your heritage.

Tuesday 15th November 2016

10.00am – 3.30pm

The Town Hall,
Market Square,
March PE15

For more information contact
Dawn Bainbridge on 01223 224880 or email:
dawn.bainbridge@hlf.org.uk

A JONES & SON

TELEVISION SALES/REPAIRS/INSTALLATION

FREE LOCAL DELIVERY

FIRST CLASS AERIAL INSTALLATIONS/ADDITIONAL POINTS

26 March Road, Wimblington, March, Cambs PE15 0RN

Tel: 01354 740320

CLOSED ALL DAY TUESDAYS

Upwell Computer Repairs

Virus Removal - Upgrades - System Service -
New Machine setups - Wireless setups -
Printer setups - Call out repairs

Phone - 01945 772717/07849 778525

E-mail - upwellcomputerrepairs@gmail.com

Car Models Quiz - The Answers

10.Herald	(Triumph)	11.Minix	(Hillman)
9. Ruby	(Austin)	12.Javelin	(Jowett)
8. Mayflower	(Triumph)	13.Dolemite	(Triumph)
7. Sapphire	(Armstrong)	14.Cougar	(Ford)
6. Razoredge	(Triumph)	15.Elif	(Riley)
5. Kestrel	(Riley)	16.Scimitar	(Reliant)
4. Isis	(Morris)	17.Impala	(Chevrolet)
3. Hornet	(Wolseley)	18.Trooper	(Isuzu)
2. Capri	(Ford)	19.Mustang	(Ford)
1. Hawk	(Humber)	20.Robin	(Reliant)

Useful Telephone Numbers

Age UK Cambridgeshire	0300 6669860
Alzheimer's Society (Fenland)	01945 580480
Anglian Water – Susan Bull	08457 145 145 101
Christchurch Resident's Association	01354 638990
Churchwarden - Mrs. D. Symons	01354 638352
Citizens' Advice Bureau, Wisbech	01945 464367
Community Car Scheme (to book a journey)	07902 316360
Community Centre bookings	01354 638478
Community Fire Safety Officer	07717858166
County Councillor - Fred Yeulett	01354 653763
District Councillor - Will Sutton	01354 638025
District Councillor - Michelle Tanfield	07908 707129
Electricity Faults - UK Power Networks	105
FACT	01354 661234
Fenland District Council	01354 654321
Floodline	0845 988 1188
Library - March	0354 0455225
National Debtline	0808 808 4000
Norfolk Dial-a-Ride	01553 770310
Parish Clerk - Jane Rees	01354 638131
Parish Councillor - Jill Bliss	01354 638343
Parish Councillor - William Beswick	01354 638758
Parish Councillor - Roger Gladwin	01354 638538
Parish Councillor - Geoff Harper	01354 638681
Parish Councillor - James Hughes	01354 638310
Parish Councillor - Peter Owen (Chair)	01354 638847
Parish Councillor - Nigel Russell	01354 638279
Pharmacy at Upwell Health Centre	01945 774934
Police - PCSO Sue Clarke	07738025220
Police - Emergency	999
Police - Non Emergency	101
Telephone Complaints	0345 145000
Townley School	01354 638229
Trading Standards	845040506
Train Information	08457 484950
Upwell Health Centre (and out of hours)	01945 773671
Water Emergencies	08457 145145

Club Contacts	
Book Club - Sheila Day	07946 635908
Craft Club - Wendy Yates	01354 638448
Garden Club - Marion Hawthorne	01354 638230
Short Mat Bowls Club - Wendy	01945 772732
WI - Peggy Warby	01354 638339

Web links in the Heron are active
when viewed in our online version
www.theheron.info

Neighbourhood Watch

Colin Steenson - Church Rd (East)	01354 638664
Sandra Kay - Crown Rd	01354 638478
Peter Knight - Church Rd (West)	01354 638779
David Yates - Church Rd (West)	01354 638448
Julian Swallow - Upwell Rd (North)	01354 638679
Jackie Wood - Upwell Rd (North)	01354 638679
Simon Freeland - Upwell Rd (South)	01354 638802
Richard Guilford - Area Co-ordinator	01354 638990
David Harrowing - District Co-ord.	01945 870963

And Finally...

Well Christmas is almost here and with the recent fall in temperature, if we get any precipitation it could well be a WHITE one! So better get your toboggans out and try and find a hill somewhere!? If the Sixteen Foot freezes over, could this herald the return of the famous 'FenSkaters'? Come on Mr. Smart! Get off that bike and get yer skates on! The rest of us will just have to make do with snowshoes.

Hopefully you've all booked up for the final Christmas Shopping Trip of the year with Garden Club to the 'massive' Bury St. Edmund's Christmas Market on the 27th Nov. Don't miss out on that one! Always great fun!

Looks like a pre-Christmas 'fattening-up' with the Harvest Festival Supper on the 12th, and Garden Club Fish & Chip Supper on the 15th. We'll definitely be sinking into those snowdrifts! Still, all those new council gritters should help. If they don't get stuck in the snow!

So what of the History Mystery on page 19? Weird or what? Some say there's no such thing as coincidence but what of the bridge crashes on page 13 –

unlucky for some!
(That was unplanned too!)

I'm dreaming of a White

Christmas! So I'm taking after those Shincok Indians

of last month and stocking up on logs! You can

never have too many logs you know!
Brrrrrr! Think a hot toddy is in order.
Till next time – Ed'.



I see snow! Lots of snow! Lots of overweight people sinking into the snowdrifts...and people skating along the Sixteen Foot with armfuls of logs

Christchurch Community Centre

60's **70's**

Invite you to a

Sixties & Seventies Disco

£10 per ticket
Hot Food included
Fancy dress optional

Wine, Beer, Cider & Soft
Drinks available. Please
bring your own spirits

Saturday 3rd December at 7.30pm

Dress to impress – tenner for the best outfit
For Tickets please contact Ruth on 01354 638419

**Please join us for a good night – All
proceeds are going towards our new
Community Centre**

**Make the most of the internet
this Christmas!**

Buying and selling
Recipe and meal ideas
Save £'s on shopping
Black Friday bargains
Gift and card ideas

15 NOVEMBER 10.30-1PM
QUEEN MARY CENTRE WISBECH

INCLUDING HELP FROM DEVICE DOCTORS
Can't get your tablet or laptop to do what you want or it's not running smoothly?
Make an appointment and we will do our best to help you sort it out

To book and find out more
Phone 07951 378303
Email makingmoneycount@circle.org.uk

Making Money Count
LOTTERY FUNDED
For everyday help with your money

Syringa House

Many of you may well by now have seen the fantastic progress that Noel Crawford and his wife Hazel have made in reclaiming Syringa House, the old village Post Office, from the mass of bramble bushes, ivy, and other foliage that had swamped it over the years. WHAT A TRANSFORMATION! Sympathetically restored to its former glory. It's even got a front garden again! Though that is as yet still to be planted out. More on that next Spring. Despite now having modern double-glazed windows their design remains true to the originals. Some skilled and extra costly work there. Noel has also completely restored and refurbished the crumbling rear gable end of the house which had been destroyed over the years by invasive, elder, ivy, and the like.

Good news for them too that the planning application to build six homes on the field behind Syringa House has currently been refused. There were concerns over the proximity of access to both Townley School and the awkward T-junction where Crown Road meets Upwell Road. There had also been legal issues to be addressed

concerning the curtilage of Syringa House itself. The obvious access to the proposed site would be from Fenview but with this crossing Crown land it appears that the developers had initially gone for the easy option to avoid paying the additional fees for being granted permission for this access route.

Anyway very well done Noel and Hazel. We look forward to seeing Syringa blossom still further as time goes on!





HeronSport

Are you able to Referee? Do you know the game? Could you be called on to help out? - If so the Football Club would love to hear from you, as the FA are not able always to provide a Ref for games. Ring 01354 638307



Cottenham's backs were to the wall as AFC pressed for a second goal to ram home the victory

What other sports could your Heron Community Magazine feature here?

It's been great to have the football club to write about, and we hope you've enjoyed reading about them, but what else happens in the village? We only heard about the reforming of AFC Christchurch because someone mentioned it to us. This made us think what else don't we know about?

Yvonne Chenery has been sending reports for us but we'd love it if others could help us out by writing short report from games, to spread the load so to speak. If you think you could please ring the Editor—01354 628990

Football Fixtures (home team first)

Mead Plant & Grab 5B League

5 Nov 2pm AFC v Coldham United Res
12 Nov 2pm AFC v Huntingdon United Reserves
19 Nov 2pm AFC v Benwick Athletic Reserves
26 Nov 2pm Fenstanton Reserves v AFC
03 Dec 2pm Huntingdon United Res v AFC

AFC Christchurch romped to yet another victory, on the Recreation Ground last month against a reserve Cottenham side, said to be better than their first team squad. If that is the case then AFC won't be long in the lower division. A goal in each half saw a dispirited Cottenham side put to the sword by a neat pass and move game played by some accomplished players. Manager Peter Chenery must be proud of the team spirit and

effort shown by his side on what can best be described as a challenging, energy sapping pitch.

Walking Football

The new sensation is walking football, Walking Football is designed to help people keep (or get started on) an active lifestyle despite their age, as well as getting those back playing football who had to stop due to injuries. The sessions are aimed at (but not limited to) over 50s, those coming back from injury and those with lack of mobility.

There are sessions at March and Wisbech, but we could get one going here if enough interest - Contact the Editor if you'd like to be involved!

Football Results

Mead Plant & Grab 5B League

AFC Christchurch	2	0	Cottenham United A
Coldham United	3	1	AFC Christchurch
Marchester United	2	2	AFC Christchurch

Cambs Lower Junior Cup

Coldham United	3	1	AFC Christchurch
----------------	---	---	------------------

Any views expressed in The Heron do not necessarily reflect the views of
The Heron Editorial Team.

The team aim to provide a balanced view of village opinions where such views are expressed.
We reserve the right to edit any submissions where we feel this is appropriate.