

# The Heron

Community Magazine

October 2016

Delivered to homes in Christchurch, Euximoor and Tipps End - £1 where sold

## *In this issue!*

Bradys take the Reins	2
Community Info	3
Diary Dates	4
Church Services	4
Alan Russell	5
Editorial	5
Letters to the Editor	7
My First Car	8
From PC Chairman	8
Oil Security	8
Rectory Exchange pt2	9
Clubs Pages	10&11
CRA report	13
Fire Service	13
Refuse to Recycle	14
Harvest Supper 2016	14
Village Shop—deadline	16
Advertise in the Heron	16
Townley Page	19
Joan Smith	21
Health Centre Report	22
Sound can be Baffling	23
Useful Numbers	26
And Finally	26
Graphic Novel w/shop	27
AFC Christchurch	28



## Fenland welcomes Lynda and Ian

## to the Benefice of six Fen Churches

- see Page 2

### Editorial Team:

Richard Guilford – Editor

Paul Haresnape – Technical Support

Vivien Haresnape – Administration

Enquiries: [editor@theheron.info](mailto:editor@theheron.info) / 01354 638990

Advertising: [adverts@theheron.info](mailto:adverts@theheron.info) / 01354 638381

Web Site: [www.theheron.info](http://www.theheron.info)



# Bradys take the Reins

**Ian and Lynda Brady are our new** incumbent vicars as of September this year, 2016, and we welcome them wholeheartedly. Both originally were saved by the Salvation Army; they first met at the Salvation Army Training College where they studied for two years, getting engaged after their first year there. Within a week of first meeting they knew that they were destined to be together. At that time you had to ask permission from the Sally Army to get engaged. After that Ian was posted to The Raffles Estate, Carlisle, and Lynda went to Bradford – Idle.

The Raffles at that time was one of the most deprived Council Estates in the Country. Conversely, Linda was in Idle, a village subsumed into the outskirts of Bradford. The Salvation Army Hall was next to the - "Idle Working Men's Club" (*a bit of an oxymoron – Ed.*) Lynda also had many jibes fired at her that she was the Idle Officer (lol) Ian, however, had a 'baptism of fire' in the very deprived area of the Raffles Estate. There were many troubled families there but, over time, once Ian and Lynda were married in 1990 and working up in Carlisle together, they established many help schemes including; a Parent and Toddler group, loaning of Calor gas heaters over the winter months, an Allotment Club – which included tool loan and encouragement to grow their own food stuffs, there were also Christmas food parcels. The latter developed into a food bank that was eventually run throughout the year.

Whilst at Carlisle, after the fall of President Ceausescu the Romanian Dictator, Lynda was in one of the first Aid Convoys to the orphanages out there, Ian then joined them the following year. After Carlisle they were transferred to Workington in Cumbria, which also included Keswick with its beautiful Lake District National Park. This was another two year appointment before they were moved on again to Liverpool – Childwall Valley. Being a 'Scouser' this was like coming home for Ian and was, a similar posting in an area of social need like the Raffles Estate, but this was only for six months.

Next it was Wallasey on the Wirral for a couple of years before moving on again to Chester City. There was a huge homeless problem there at the time and Ian and Lynda became involved in a regular

night time soup run. Eventually the Cathedral wanted to get involved, and Marks & Spencer came onboard supplying crates of 'end of day' foodstuffs, such as sandwiches, drinks, water etc. Later

this became Ecumenical, and Ian and Lynda trained and organised all the various teams.

Ian and Lynda were with the Salvation Army for a total of ten years. During that period the Salvation Army would move their Officers at a moment's notice (6 weeks) to areas of need. After Chester they left the Salvation Army as they felt a calling to the Anglican Church. So they ended up at the Anglican Theological College at Ridley, Cambridge, where Ian trained for ordination. At this time Ian and Lynda started their family. Lynda went on with her ordination training later at Oakhill Theological College, London. Ian was ordained in Norwich Cathedral in 2000, and served his curacy at Cromer Parish Church. The Curacy lasted three years after which they moved to London – St. Anselm's, Belmont. They remained there for six years during which time Lynda undertook her training.

They then moved to the Isle of Man where Ian became Minister in Charge of St. Thomas' Church, Douglas, and Lynda became Senior Chaplain to the Hospice. After three years Ian was offered the post of Cannon Evangelist at the islands Peel Cathedral – St. Germain's. They were on the island for a total of seven years before moving on to the Benefice of the six Fen Churches of Christchurch, Doddington with Benwick, Manea, Welney, and Wimblington. Yes!

They are in charge of ALL OF THEM! Ian and Lynda have two boys – Ben 19, and Joe 16. We wish them every success in their new posting, which both we and they hope will be a long term one.

Good Luck and every blessing to you both.

Ian will be at the Harvest Festival in the Church on 2nd October— why not go and meet him?



Picture - Cambs Times



Ian and Lynda at home



# Community Information

**Mobile Library:** first Friday each month  
in the Lay-by Upwell Road 15:00 - 15:40

## Mobile Post Office:

visits Mon - Thu in the Lay-by Upwell Road  
Monday and Thursday 16:30 to 17:00  
Tuesday and Wednesday 16:10 to 17:00  
Fridays - no service

**Dun Cow Meal Deal** on alternate  
Wednesday lunchtimes - 2 courses for £5.50 -  
Pre-Booked places ONLY.  
This month's dates are 12th and 26th Oct

**The Walking Group's** next walk is on  
Friday 14th October. Open to all - anyone  
interested meet outside the Church at 1pm - finish  
up at the Church at 2pm for "Cake Coffee and  
Chat" The aim is some good exercise in the fresh  
air as well as the opportunity for a nice chat.  
Because the pace is gentle, the other groups that  
they run have attracted people with reduced  
mobility, so anyone can take part. Contact Sandra  
Kay on 01354 638478 for further information

**Poppy Sellers UGENTLY needed -**  
**Apologies to any** who rang the number last  
month - it was supplied wrongly - Please call again  
if you can help deliver in Padgetts Road, Green  
Lane and Scott's Road. Also Wayside, Crown  
Road and Fenview. It is once a year and a  
reminder that we haven't forgotten all those men  
and women who have fought for our country.  
Please contact Lesley Kennedy on 01354 680401


**Volunteer gardeners sought** to help  
those less able to manage their gardens. The  
Parish Council believe that the village would  
benefit from a voluntary working party to help  
those that are needy for any reason, with their  
garden. The working party would help them to get  
their garden in order again, making it easier for the  
owner to keep on top of the work.  
We all need a little help now and then, so if you  
would like to be part of the working party, please  
contact Councillor Geoff Harper phone number on  
page 26 or geoffrey.harper1@ntlworld.com

**A Secondary School review** in the  
Fenland area is being carried out by  
Cambridgeshire County Council—they are

considering building a new school in Wisbech on  
the old Horticultural College site, and would like  
your comments by 21st October 2016. There is a  
10 page proposal which you would need to see  
before commenting. We can email it to you if you  
request it. Comments are being collected online at  
[www.smartsurvey.co.uk/s/  
proposalforasecondaryschoolintheFenlands](http://www.smartsurvey.co.uk/s/proposalforasecondaryschoolintheFenlands)

**Flu vaccinations** are still available at Upwell  
Health Centre, on Saturday mornings 1st, 8th and  
29th of October. The appointments are available to  
book - call the surgery on 01945 773671

**The Village notice board** is now  
useable again, with clean windows and a dearth of  
notices going back some 2 years (remember the  
FOTS treasure hunt?) The "Spring Clean" has  
been needed for as many years as I can  
remember. I don't know who the "Board Angel" is  
but you've done a great service to the village. To  
the villagers, let us know what you think of how  
useful, or otherwise, this board is to you. PVH

**Save £££'s on your heating oil!**  
**'together we all save more'**

The oil club has launched a heating oil club for our village. If you would like to join or find out more about the club, please visit the web site: <http://www.oil-club.co.uk>.

**The benefits are:**

- Reduced heating oil costs
- Reduced carbon exhausted into our environment
- Reduced heavy goods vehicle traffic through our village

**About The Oil Club**


The Oil Club is an **independent** organisation and we have no links to any of our suppliers. Our aim is simple – reduce the cost of heating oil for our members and the environmental impact as much as we can!

**How much can we save you ?**

By grouping our deliveries by village or postcode sector and the bulk purchase ability of The Oil Club, we are able to negotiate with our panel of suppliers the best bulk purchase price for heating oil and pass on the saving to our members.

As the membership grows, so does the negotiating power of The Oil Club! So why not help us help you and *Join The Club* today?


**How do we help the environment ?**

 A village with 100 members will save between 150 to 180 heavy duty vehicle trips a year through your village. A big saving on wear and tear to our lanes, roads and to the environment.

**Join The Club**

**& Membership is totally free!**

**[www.oil-club.co.uk](http://www.oil-club.co.uk)**  
'together we all save more'



See article about your oil security on p 8 - Ed'.

# DIARY DATES

Abbreviations for commonly used venues:

TS = Townley School, CCC = Christchurch Community Centre, (new Hall)

TH = Three Holes Village Hall, UH = Upwell Village Hall, WH = Welney Village Hall

**If you have any important up and coming events let us know for inclusion here:**

Oct 3 <sup>rd</sup>	Pilates - 6:30-7:30pm - £5 per session, BodyCare conditioning 7:30-8:00pm - TS
Oct 4 <sup>th</sup>	Christchurch Craft Club - AGM & Autumn Flower Arrangements - CCC - 7pm
Oct 7 <sup>th</sup>	"Cake, Coffee and Chat" Parish Church 2-3pm - All Welcome
Oct 7 <sup>th</sup>	Mobile Library visits - Upwell Rd Lay-by 3-3:40pm
Oct 10 <sup>th</sup>	Pilates - 6:30-7:30pm - £5 per session, BodyCare conditioning 7:30-8:00pm - TS
Oct 10 <sup>th</sup>	Christchurch Parish Council Meeting - 7:30pm - CCC
Oct 11 <sup>th</sup>	WI - Foot Care - Stephen Horsburgh - 7pm - CCC
Oct 13 <sup>th</sup>	Autumn Crafts - Queen Mary Centre Wisbech - 10am-1pm FREE
Oct 14 <sup>th</sup>	Walking Group - first walk - open to all - 1pm - Outside Church
Oct 14 <sup>th</sup>	"Cake, Coffee and Chat" Parish Church 2-3pm - All Welcome
Oct 17 <sup>th</sup>	Pilates - 6:30-7:30pm - £5 per session, BodyCare conditioning 7:30-8:00pm - TS
Oct 18 <sup>th</sup>	Garden Club - *Special Meeting ALL INVITED* see page 11 - 7pm - CCC
Oct 19 <sup>th</sup>	Christchurch Residents Association - 7:30pm - The Old School
Oct 21 <sup>st</sup>	"Cake, Coffee and Chat" Parish Church 2-3pm - All Welcome
Oct 21 <sup>st</sup>	"Upwell Tramway & Wisbech Canal" - Bill Smith - sausage & mash supper £8 each - 7:30pm - TH - booking essential - Alison 01945 465909
Oct 24 <sup>th</sup>	Pilates - 6:30-7:30pm - £5 per session, BodyCare conditioning 7:30-8:00pm - TS
Oct 26 <sup>th</sup>	Christchurch Book Club - 7:30pm - Peartree Farm Padgetts Rd
Oct 28 <sup>th</sup>	"Cake, Coffee and Chat" Parish Church 2-3pm - All Welcome
Oct 30 <sup>th</sup>	Upwell Jazz Club - Steve Waye / Mike Clifford
Nov 12 <sup>th</sup>	Christchurch Parish Church Harvest Supper - 5:45pm - CCC - details page 14

## Parish Church Services

Oct 2 <sup>nd</sup>	11am	Wardens, Rev I Brady	Harvest Festival in <b>parish church</b>
Oct 9 <sup>th</sup>	11am	Rev J Webb	Holy Communion
Oct 16 <sup>th</sup>	3:30pm	Wardens, Rev I Brady	Evening Prayer
Oct 23 <sup>th</sup>	11am	V Smith	Morning Prayer
Oct 30 <sup>th</sup>	10am	Rev L Brady	United Service at WELNEY
Nov 6 <sup>th</sup>	11am	H Chappell, A Day	All Age Worship in in <b>parish church</b>

**Every Friday 2-3pm - Coffee, Cake and Chat in the Church building**

## The Heron Deadline

The 25th of the previous month is the deadline for all copy. However, due to the amount of copy we are getting, if you leave it till then, we may not have space. So - AS EARLY AS YOU CAN please

**At the time of going to press, all information is as accurate and up to date as we can make it. Changes and updates may be published subsequently. All information contributed by outside agencies, including dates etc., will be assumed to be correct.**



# The Alan Russell Column

Alan was excited about a school holiday to a mystery location - the letters went home...



The envelopes were eagerly opened to find out the destination of the first Townley County Primary Schools holiday – COLWYN BAY, NORTH WALES. Where? To my parents it might just as well have been to North Italy as they had never heard of it, but I remembered from our Geography lessons that it had been one of the areas of Great Britain we had been taught about albeit briefly. The letter set out details of cost, obviously the first consideration, as most of the pupils came from agricultural working parents with low wages; although a savings scheme had been devised allowing weekly payments to be made, which was very helpful. We would be allowed one case and a bag or knapsack to keep with us on the journey and the requirement of clothes, towels, swimwear etc., we would need.

Those parents with cars were asked to provide transport to the station at March. A packed lunch and a drink would be needed for the LONG journey and the type of accommodation was described. After doing some budgeting figures, and a promise from me to earn as much as I could towards the cost and for spending money, it was agreed I could go, and the form of consent and agreement to the cost was signed and returned. We had several months to save up and a few meetings were arranged for parents and pupils to learn more details of the trip.

Most pupils who wanted to, were able to go, but a lady in the village who I was quizzing about these holidays recently, told me that because there were four of her family – brother and sisters all at school her parents decided because of the cost of all four of them wanting to go, that none of them were able to go. This was perhaps the case with others, which was unfortunate for them.

We were to be accompanied by the teachers, school secretary and some senior prefects to oversee us. In later life I have often seen school

parties of about 30 or 40 on holiday and now realise it is no easy task to look after and keep control of them by teachers and helpers especially in these times when children, because of their ability to play up, or more seriously the actions of adults to lead them astray if they are not supervised correctly at all times; as I say no thankful task. Hopefully in 1949 the evil of child predators was not so prevalent as today, or at least we like to believe so.

## EDITORIAL

So, despite the Indian Summer we are currently experiencing, with the passing of the equinox on the 22nd September, Autumn is now officially here!

Children of all ages are back to school and new young students off to university. We would like to take this opportunity to congratulate all new students on gaining the necessary grades to take up a place at their respective universities, also all those who gained good grades in their GCSEs and 'A' levels, and last but not least all those primary school pupils who have just taken on the challenge of moving up to 'big school' and embarking on their Secondary education. Well done and good luck to you all!

Hello! and Welcome! to our two new vicars Ian and Lynda Brady. Their full story is on page 2. Some controversial and complementary letters on page 7. News of an Oil Club on page 3 and some security advice re the same product on page 8. Some recycling advice on page 14 and concerns about the Village Shop Survey at the top of page 16.

There's an Autumn update from Dr. Williams of Upwell Health Centre on pages 22 and 23, and an update on the new soundproofing in our Community Centre also on page 23. Great progress made there thanks to Steve Waye and crew.

Then there's all the usual features plus details of a new Graphic Novel Workshop for 15 to 25 year olds on page 27. Finally, an update on AFC Christchurch's success on the back page.

If any of you take part in the Graphic Novel Workshop we would really love to hear from you as to how it went, and how you got on.

Those of you that haven't PLEASE return the Village Shop Survey Forms! They are extremely important to the shop team - pg 16.

Enjoy! 'Till next month -

*Restored*



Colwyn Bay miniature railway about that era



## PADDOCK & FIELD SERVICES



Equestrian and Small Acreage Specialist

**Andy Jackson**

Orchard Barn  
Flint House Rd  
Lotts Bridge  
PE14 9JN

07801 108 555



andy@paddockandfieldservices.co.uk  
paddockandfieldservices.co.uk

TOPPING, HEDGE & VERGE CUTTING,  
HARROWING & ROLLING,  
SPRAYING, BALING,  
MACHINERY RENOVATION & REPAIRS

# Outwell Timber

For all your Timber and Building Supplies

ISLE ROAD, OUTWELL

PE14 8TD

Tel: 01945 77 21 16

FENCING, PANELS, TRELLIS  
TIMBER, PLYWOOD, DECKING

SAND, BALLAST, GRAVEL

SCREWS, NAILS, BOLTS

PAINT, SILICONE, HAND TOOLS

LOCKS, ELECTRICALS, PLUMBING,  
GUTTERING

UNDERGROUND PIPE & FITTINGS

CEMENT, MULTIFINISH, PLASTERBOARD

**Personal  
Trainer**  
— FENLAND —

## Personal Trainer Fenland



### DROP A DRESS SIZE IN 1 MONTH



**Lifestyle Transformations** - Safely lose weight  
the right way so you keep it off and feel great



**Performance for sport** - Maintain great fitness  
levels and improve in sports as an athlete



**Increased Confidence** - Mindset allows you  
to remove the barriers that hold you back in life



**Call us for a FREE consultation today - We are here to help**

Entrust your health to a world class coach for world class results

info@personaltrainerfenland.co.uk

Tel : 01354 638 589 - Christchurch



# Letters to the Editor



Dear Editor

Firstly, can I congratulate you on the Heron - I bought one earlier this year (January) having not seen it since the old format. It's a great-looking magazine and packed full of interest. Obviously a lot of time goes into compiling it, and the snippets and jokes are all entertaining and/or useful! In the January edition I was very impressed with the 'It's never too late' article about keeping physically active.

I am interested in your 'Diary Dates' feature on the first page, as I notice you carry information for other villages. Would it be possible to include any regular events from Welney where I live? We recently opened our new village hall and need to promote the general use of the hall and attract people to existing groups there as well as hopefully start up some new ones!

I am a yoga teacher and would be interested in letting more people know about the groups I teach (one at Welney, one at Upwell) so being listed in the Heron would be great if possible. We have other groups in Welney such as WI, Friendship Club, and carpet bowls, all of which would welcome new members, especially now as we have a new building with more space and better facilities that we can be proud of.

please let me know if you can fit in some more diary dates for some of our groups and events. Additionally, If you think it suitable I would like to do an article about yoga, I could do it as a kind of story e.g.. how I came to begin doing yoga, became inspired to train as a teacher, what kind of things I do now, etc. as well as some general points to try to dispel some preconceptions about yoga!

I look forward to hearing from you  
best wishes

Karen Fleming

*Thank you for your kind words re The Heron of which we are very proud. - Ed'.*

Dear Editor,

New building on Padgetts Road and elsewhere will happen eventually for a very obvious reason - Christchurch will be forced to accept its share, however unfair this may appear, of the burden that the rest of the country is carrying - overpopulation. The past census was frightening and revealed that our relatively small island was very close to being at the top of the list of European countries in terms of persons per useable square kilometre. By now, covert

immigration being what it is, Britain probably has reached that top.

This morning (14th Sept) on the farming programme at 5.45am farmers were blamed for the fact that Britain has lost more of its wildlife than any other European country. A consideration of the facts might have prevented that silly claim. We are now building on green field sites for one thing, and for another our attention is always being distracted from reality by political sideshows, and scapegoats. More concrete displacing wildlife? More houses? The lesser-spotted whatnot in decline? Blame the farmers! They won't complain - they are too busy trying to feed us to engage in sterile dispute.

Pauline Hutchins

*Thank you Pauline for your interesting letter though I feel that it is somewhat a circular argument; i.e. more people need more food and more housing therefore we lose more green belt to development. This can't go on forever! I remember well more than 30 odd years ago when we lost our beautiful patchwork quilt of fields in this country when government financial incentives encouraged farmers to make their fields bigger by ripping out hundreds of ancient hedgerows. This was perceived at the time as 'progress' to allow the burgeoning size of farm machines to be able to operate efficiently. However, both government and farmers have learned since that this led to yields falling due to the loss of pollinators that lived in those wildlife corridors. Couple that with the use of nicitinoid based crop treatments which have now been proven to be a major cause in the decline of the honeybee and the problem of species loss is exacerbated still further! And, by the way, who usually owns the green-belt lands that are getting built on anyway? - Ed'.*

Dear Editor,

In regard to sound damping in the main hall at Christchurch Community Centre, I would like to express my thanks on behalf of the Parish Council for the help and advice given by Steve Hawthorn to the Recreation Committee. Also for the work he's done sourcing the PA equipment, it means now the hall is about set for anything.

I must also thank Colin, Geoff, Ruth & the others who fitted the echo deadening panels another example of how people in the village give of their time to benefit the community Once again, my thanks to all.

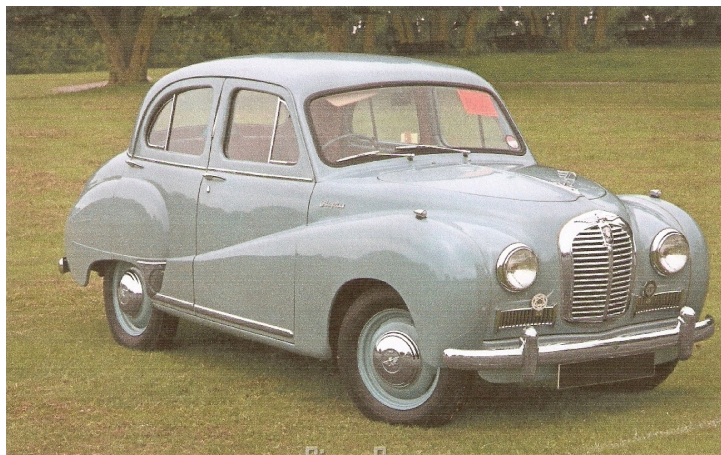
Peter Owen

*Great stuff! Well done all! If only there was such co-operation for all village projects - Ed'.*

## My First Car - Cliff Clifford

A 1954 Austin A40 Somerset in Cumulus grey, OCD 384, bought at 19 for £125 on apprentice pay, and paid for at £1 a week, 50 years ago. It had leather seats, built in valve radio, but no heater! If the weather was foggy (and I lived on the coast) it disappeared into the background, and the lights did not help; on one occasion I got it into a ditch.

The day before my driving test a friend joined me for a last minute practice, but ended with a meeting with the police station fence while practising a 3 point turn. This was followed by a rapid departure, but I still passed first time the next morning. I became the first driver in the family, and was expected to taxi everybody to their various appointments. With four days commuting experience behind me, I was required to drive the whole family to visit relatives in London! Arriving in daylight was



Let us know what your first car was, and some of your memories of it - we'll help with writing and photos if needed!

harrowing enough, but returning in the dark was something else.

With no driving experience to fall back on, my four advisors competed to compound the problems. My father was short tempered and irascible, my mother with poor eyesight and no concept of road and traffic rules and regulations, but plenty of advice, and two younger brothers generally contradicting everybody else!

Later, as confidence grew, I thrashed it to death, and was booked for both speeding and parking obstruction offences. Both totally unjustified, in my view! Shortly after the speeding offence, the limit

on the section was raised to 40mph, and two car lengths past mine the road was blocked, and nothing could get any further anyway. At about the same time as the HP was completed; I parted with it, complete with steaming head gasket, for £20!

## A message from the Parish Council Chairman

AFC Christchurch took the field for its first home match after an absence of several years, on Saturday 17th of September. It was a pleasure to see the Recreation Ground used again. The teams also benefited from the new changing rooms however, this happy occasion was somewhat marred by dog poo on the playing field. As a dog owner myself I was disappointed on two counts

1. Dogs are banned from the field
2. The owners didn't see fit to clear the mess their pooches left behind

Richard Guilford and the Heron team have campaigned tirelessly about dog mess in the village. After the last campaign it got better for a while but it seems to be back sliding again. This is especially so in Crown Road despite the Townley School's splendid poster campaign!

So come on people please clear up after your pets I'm aware that most dog owners are responsible people and clear up after their pets but sadly a few can't be bothered!

## Consider your Oil Security!

Are you topping up your heating oil tank for winter? With the value of fuel it is worth considering its security. In the more isolated parts of the countryside, it is primarily domestic properties that have been targeted by the heating oil thieves but we have also seen such thefts at farms and other businesses.

There are a number of security devices available that will protect your fuel supplies, details of which can be found via your fuel supplier or local plumber's merchant. Examples are the GPRS Fuel-Oil Alarm from [www.compoundsecurity.co.uk](http://www.compoundsecurity.co.uk) and Tank Commander from [www.commandersecurities.co.uk](http://www.commandersecurities.co.uk) which both have Secured by Design accreditation. These products will detect a dramatic drop in fuel and call you on the telephone. There are other systems which will add on to an existing intruder alarm system whilst others protect the filler cap and there are, of course, the conventional locks.

Other considerations would be defensive planting around the tank to conceal it, restricting access to it by gates or fencing or locating the tank under lighting in view of lived in rooms within the house.





# An Unlikely Exchange of Rectories - Part 2

***Last month we reproduced the first part of an article by Martin Gibson of the Rectory Society. He had been intrigued as to why the Revd Henry Sayers (father of the writer Dorothy L Sayers) should have been willing to exchange the large and beautiful Rectory at Bluntisham, where he had lived for 20 years, for the rather smaller one here in Christchurch. He continues -***

The answer, perhaps surprising in modern eyes, was money: for Christchurch, whatever its limitations in terms of its church and clerical accommodation, provided its Rector with a larger income. Crockford's 1914 Directory discloses that Neville had stated his net income for 1913 as 880 guineas (as against Sayers' 690 guineas). However the First World War significantly boosted the productivity and profitability of English agriculture and from the figures in Crockford's 1918-19 Directory, this in turn significantly boosted some clerical incomes. For Christchurch the net income given by Sayers had risen to 1,280 guineas, whereas Neville's at Bluntisham had gone up to 840 guineas. There is no suggestion that Sayers was a greedy or avaricious man but in 1917 it seems probable that he may have had financial worries relating to his daughter, which Neville's offer enabled him to solve. By 1917 Sayers had funded

Dorothy through school and university but her published letters readily demonstrate that she continued to need his financial support. She was still years away from being a successful novelist. Her first novel 'Whose Body', which introduced her popular character Lord Peter Wimsey, was not published until 1923.

In January 1916 Dorothy had taken the post of modern languages teacher at Hull High School but she was unhappy and yearned to return to Oxford. Over the Christmas holidays she apparently discussed with her father taking up an

apprenticeship with the publishing firm of Blackwell's of Oxford. In January 1917 the minutes of the Cathedral Chapter at Christ Church Oxford (Patrons of the living), record that they sanctioned the exchange at Bluntisham. By 25 January 1917 Dorothy had discussed the apprenticeship with Basil Blackwell and wrote to her parents saying "As you are so very kind and generous, Tootles dear, (Dorothy's name for her father) as to give me this further opportunity, I think it very likely that I will accept it". She did so and after just four terms teaching in Hull returned to Oxford in April 1917, the same month her parents vacated Bluntisham Rectory and Grey Neville resigned as Rector of Christchurch. Dorothy's publishing apprenticeship cost her father a £100 down payment plus further financial support to enable her to live in Oxford, as her Blackwell's wage of £2 per week was insufficient to do so.'

*Reproduced by kind permission of Martin Gibson*



## Gravely wrong

Two visitors are reading head stones at a

nearby cemetery. One says

"Crikey! There's a bloke here who was 152!"

"What's his name?" asks the second. The reply

comes, "Miles - from London!"



Members were welcomed by our President.

**Apologies** from Ann Hicks and Belinda Gladwin  
**Minutes** of the previous meeting were approved and signed as correct.

**Correspondence:** Federation forthcoming events were given to members. Invitation from March St. Marys WI to their harvest meeting in October and their Birthday Dinner in November.

A letter from NFWI regarding proxy voting for President and Committee Member,  
All members agreed with the proposal.

Members were asked for suggestions to rename our group- names of birds and rivers were to be put forward.

Subscription for 2017 will be £39

Members were given an update on the possible closure of the Hospitals with Minor Injury Units in Fenland. A letter has been sent to Steve Barclay MP regarding our concerns and the impact it will have.

**Speaker:** Our booked speaker could not attend due to a family bereavement. We were fortunate to get a replacement, Neil Callan accompanied by his wife gave a very interesting talk illustrated with slides on making a Fenland Garden – From Crowbar to Crocosmia. A wonderful transformation from a wilderness to a well-designed garden, including a large pond, summer house, fairy walk, planted bog bed and a wildlife meadow to name just a few of the features.

Many hours using a pick axe, crowbar, wheelbarrow and mini digger has all been worth it, as their wish after retirement was to create a garden and home which took 6 years to complete. They certainly achieved their goal and hopefully members will be able to enjoy a visit next year, it is also registered with the National Garden Scheme. Neil and his wife were thanked by our President.

**Competition results** for a savoury scone  
Peggy Warby -5 Sandra Lloyd-4 Val Parker -3  
Margaret Sparrow & Ann Atkinson -2

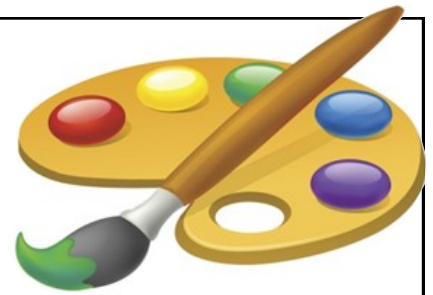
**Raffle Money** this month raised £18 for Denman Appeal.

**October Meeting** – Speaker Stephen Horsburgh on Foot Care

Competition – A handmade pair of baby booties

Raffle – Sandra Kay – Doris W Rolfe – Ann Atkinson – Wendy Yates

## Art Club



Our group is friendly and relaxed. We are all enjoying the sessions and would

love to welcome some more members. We have a tutor to lead us, but we all can learn as much from each other and gain in confidence

In our first session in September we had a go at painting flowers, looking at various ways of using brushwork and building up colour. Every artist has their own special style and approach so we had a lot of variety and some very good art work

Our second September session is 'Experimenting in Textures', looking at using a very wide range of materials, mostly found in the kitchen cupboard or garden! The 'texture' technique will then be used in a variety of ways to paint trees and foliage, brickwork, water etc.

In our October sessions we will be concentrating on drawing technique's and pastels.

Do contact Sandra (638478) or Jan (638217) for more information, or pop along during the session to see what we are up to. We meet on the 2nd and 4th Tuesday of the month at 10am to 12 noon. (term time).

## Christchurch Book Club

Book club met on September 28th to talk about the book we had been reading during September, 'The Eyre Affair' by Jasper Fforde. There were mixed reactions to this. We all found it a bit of a weird story as it is set in an alternative England and Wales with different history, and with some characters moving back and forward through time, while others could move in and out of the pages of books! Some of us enjoyed it, while others found it hard to get into.

Our book for this month is 'Salmon Fishing in the Yemen' by Paul Torday, and our next meeting is on Wednesday October 26th.

Sheila Day 07946 635908



### Oh what a week that was!

Most months the club meeting will feature a guest speaker, who will hold forth on garden related topics, which the members find interesting as well as illuminating. This month the speaker who was due to entertain us was Johan from Tamar. He was booked many months ago and confirmed several times by our club secretary Marion Hawthorn. So imagine our surprise on Monday lunchtime when we were informed he would not be showing up, the following evening. Bad form, I would say so, annoying, definitely. Panic stations ensued with many phone calls to contacts without the desired result. Later that day well known horticulturist and speaker Barry Gayton agreed to step into the breach and duly arrived at the community centre the following evening.

Barry spoke for well over an hour on the best plants and shrubs to use in Autumn Gardens and windy conditions, with helpful advice and recommendations. I'm happy to report that the hall's new small PA system worked well, and our members were happy with the result.

Next month we welcome Jeni Cairns to the club. Jeni is an award winning designer who recently won Gold, best in show for her Welney Wildfowl Trust Garden, at the Hampton Court Flower show.

This was the second time she has won this award and her appearance is a coup for the club. To that end the club members are happy to invite non-members to come and try out the club and hear this brilliant gardener, talk about the life of a garden designer, and hopefully get some tips. So come along and check it out. Members £1.00 non-members £2.00 Tuesday 18th October at 7.00pm at the community centre.

The club's Christmas trip is on Sunday 27th November 2016, to Bury St Edmunds Christmas Market.

The market runs from Angel Hill and the Abbey down to the Arc shopping centre and the Apex. Joining up with the existing Sunday market, giving around 300 stalls plus shops and restaurants. The coach leaves from Christchurch at 8.30 am, departing from Bury at 4.00 pm.

Members £10.00 Non-members £13.00 call 01354 638 230 to book.

The raffle prizes for the October meeting will be provided by: Julie Roberts, Sheila Smart, Peggy Warby and Bubbles Whiting.

Till next month

Steve

### An Invitation from Christchurch Gardening Club

## **Jeni Cairns** **Award Winning Garden Designer**

Winner of Gold  
Best in Show 2016  
(Welney Wildfowl and Wetland Trust garden)  
at the  
RHS Hampton Court Flower Show.

**TUESDAY 18<sup>TH</sup> OCTOBER 2016**  
**at 7.00pm**  
**Christchurch**  
**Community Centre**  
**Upwell Road PE14 9LL**

Entrance: Members £1.00 Non-Members £2.00



Our members were very keen to do the glass painting, and in no time at all got started. The end result was very nice, as you can see from the picture. There wasn't very many of us but we were a jolly crowd.

Next meeting is on 4th October - Autumn Flower Arrangement. Look forward to seeing you all then.

Regards  
Wendy.



- Contact info:  
Wendy Yates 01354 638448



# CHRISTCHURCH ELECTRICAL



Simon Freeland Hill Farm 3 Church Road Christchurch PE14 9PQ  
Tel: 01354 638802 Mobile: 07727 046439

- All domestic electrical installation work undertaken.
- No job is too small (Min ½ Hour Charge).
- Free quotations / estimates.
- Very reasonable rates with no VAT.
- References available throughout the parish.
- Part P Registered - Fully Insured - Government Approved.
- Six Year Warranty Offered.



[www.elecsa.co.uk](http://www.elecsa.co.uk)

[www.trustmark.org.uk](http://www.trustmark.org.uk)

Electrical Safety  
Register

incorporating



[www.electricalsafetyregister.com](http://www.electricalsafetyregister.com)



**S & H Painters and  
Decorators**

Tel : 01354 638124

Mob: 07905145680

Steven Horne

Christchurch, Cambridgeshire



save  
up to **£5**  
- ask in group  
for more details

**DODDINGTON**  
**MONDAYS 9:30 AM, 3:30 PM, 5:30 PM**  
**+ 7:30 PM**  
**DODDINGTON VILLAGE HALL,**  
**BENWICK ROAD**  
**TEL: DIANE 07707 547604**  
**WWW.SLIMMINGWORLD.COM/**  
**SLIMWITHDYNAMICDI**  
**\*OPEN BANK HOLIDAY MONDAYS\***

for this tasty breakfast recipe visit  
[slimmingworld.co.uk](http://slimmingworld.co.uk)

0344 897 8000



\*More people in the UK choose to attend a Slimming World group each week than any other weight loss group.

**Slimming**  
-WORLD-  
touching hearts, changing lives



# Christchurch Residents Association

**It was a full-house** this month with 18 members attending, including three new ones. The minutes were agreed and there were no matters arising. Subs were discussed and would be collected next month.

The telephone problems experienced in Crown Road and Crown Avenue were discussed but all were now resolved. The Oil Club was talked about along with the Boiler Juice brokerage both of which were usually 5-6p cheaper per litre than the current price – being now around 32p. Both are available online for comparison.

A new date for Speedwatch Training had finally been arranged with Paul Cole for Saturday 15th October at 9.00am meeting at The Old School.

The 51 planning and housing development applications, 24 of which had already been passed, of which 4 had already been built, were discussed at some length. All those present were concerned over the amount of proposed development changing the character of our peaceful village. A 10% increase was the maximum allowed under FDC's Local Plan which would mean a maximum of 28 new homes during the period April 2011 to 2031. So it's most definitely too much too soon.

The dog poo problem had raised its tail again and Richard was to get hold of more posters again and to arrange a future 'spray-day'. Richard also expressed his concern over the limited number of Community Shop Survey Forms so far returned. Members were encouraged to chat to friends and neighbours and try and get them involved. The potential for a new village bus service was still being investigated but there was no further news at this time.

Richard had interviewed our two new vicars, Ian & Lynda Brady, and there will be a feature on them in October's Heron. Ian would be at the church for the Harvest Festival Service next Sunday October 2nd so those that wished to do so could meet him then.

Three other up and coming events were also mentioned – A Special Garden Club Meeting on 18th October where Jeni Cairns a Gold Medal winning Garden Designer who also designed the gardens at Welney Wildlife & Wetland Trust, would be speaking. This meeting would be open to all. CRA Members were also encouraged to attend the

Harvest Festival Supper the evening of Saturday 12th November. Thirdly, Garden Club's shopping trip to the giant Bury St. Edmund's Christmas Market (details p.11). There was no other business and the meeting closed at 9.00pm. Next meeting Wed 26th November. OS –7.30pm

## **OCTOBER BULLETIN FROM CAMBRIDGESHIRE FIRE AND RESCUE SERVICE**

Winter is coming and Cambridgeshire Fire and Rescue Service is encouraging all residents to get their chimney professionally swept before the cold sets in.

Top tips to enjoy an open fire safely:

- Sweep your chimney at least once a year and get brickwork inspected, especially the chimney breast and roof space.
- Do not bank fires too high or overload the grate, and remember to let them burn down well and check the hearth before going to bed.
- Use a fire or spark guard to prevent accidental fires.
- Do not place objects on or over the mantle-piece which may cause you to stand too close to the fire to reach or use them.
- Burn only suitable fuels and avoid burning resinous woods as soot builds up quickly.

Above all, ensure you have a working smoke alarm fitted on each floor of your home and a carbon monoxide alarm installed.

For more information on fire safety log on to [www.cambsfire.gov.uk](http://www.cambsfire.gov.uk), follow us on social media or call 01480 444500.

## **Crown Av callers confused!**

Residents' phone lines in Crown Avenue were cut off for some period last month, we believe.

According to sources it wasn't just a straightforward case of no calls in or out, but when one subscriber investigated by calling his mobile from his landline phone – the number displayed was not his own!

BT Openreach had attended several properties to rectify the situation, and unofficially it is believed that the fault may have been caused when a UK Power Network team was clearing trees around power lines in Upwell Road and inadvertently cut through telephone wires. To compound the fault the power workers allegedly entered the nearby phone cabinet and reconnected the wiring as best they could, and it seemed that it wasn't good enough!

## **Refuse to Recycle Properly?**

**With the latest** proposal from FDC to make a £40 charge for emptying our brown, garden waste wheelie bins, how long might it be before they decide to do the same with our blue recycling bins? This is likely to be prompted by many householders' apparent inability to recycle properly. These mistakes are costly!

Current published figures show that it is costing tax-payers £250,000 a year if they get recycling wrong. Currently around 14% of materials placed in recycling bins cannot actually be recycled due to contamination by misplaced non recyclable items such as nappies. This means in broad terms that one in every seven recycling vehicles have to be rejected. Televisions and skateboard have also been retrieved from recycling bins. IF YOU ARE NOT SURE IF AN ITEM CAN BE RECYCLED OR NOT - THEN DON'T PUT IT IN THE RECYCLE BIN!

It costs £115 to dispose of a tonne of rejected recycling which could have been sold for £37 if it was correct! At a time when budgets are being squeezed from every angle it is even more important that resources are directed to where they are most needed.

If residents were more conscientious about their recycling and sorted their refuse properly the £250,000 currently being wasted to sort it out for them could be redirected to other services that people value. West- Norfolk Council are already about to embark on a major campaign to deal with this problem by encouraging people to recycle properly via a reward scheme. Meanwhile why not check out your recycling efforts. The reward being the money you as tax-payers will be saving yourselves. Perhaps then we might even be able to stop any £40 surcharges coming in!

In addition it might be a timely reminder to encourage villagers to make use of the bottle banks up by our new Community Centre. Whilst it is OK to place them in your own recycling bins, if you make that little extra effort to take them up to the bottle bank the village can earn money on them via the Parish Council, which can therefore be used to benefit us all via additional amenities. Past monies raised in this way have already helped with our Community Centre fit-out, including the recent new acoustic sound-proofing of the main hall. RWBG

## **CHRISTCHURCH COMMUNITY CENTRE**

comprising

**Large Hall**  
with bar facilities

**Smaller Meeting Room**

**Large Kitchen**  
accessible from both the above

**Sports Changing Rooms with Showers**

**Attractive Entrance Hall**  
\*\*\*\*\*

Available for Private or Village functions  
*BRAND NEW BUILDING OPENED 9<sup>TH</sup> APRIL 2016*

**Bookings Clerk ~ Sandra Kay ~ 01354 638478**

## **Christchurch Parish Church**

# **Harvest Supper**

**Saturday 12<sup>th</sup> Nov 2016**

Doors open 5.45, eating at 6pm.

Cold meats, fish, cheeses and salads  
plus a dessert.

Followed by entertainment

**Rhiannon Rae**

singer and guitarist

£7 per head (£5 for children).

All profits to the church.

Raffle on the night.

**Christchurch  
Community Centre**

To book a ticket Tel. Helen 638092 or Karen 638781





March Stationery & Print

**10%  
OFF**

SPECIAL  
OFFER  
FOR  
THE HERON

**DIGITAL PHOTOS**

**PRINTED FROM  
MEMORY CARDS,  
DISCS & USB STICKS**

*in August & September 2016  
on production of this advert*

**01354 656614**

[sales@marchsp.co.uk](mailto:sales@marchsp.co.uk)

5 Fenland Walk, March, PE15 8TW

**A.R. CLINGO**

**FUNERAL DIRECTOR**

**Family Independant  
Business**

**Private Chapel of Rest  
Personal Attention**

**24 Hour Service**

*Full estimates given at all times*

Golden Charter  
Funeral Plans



Pinfold House  
St. Peter's Road  
Upwell, Wisbech  
Phone 01945 772502



**FENLAND LEISURE PRODUCTS  
PLAY SOLUTIONS  
SCHOOLS, PARKS &  
LOCAL AUTHORITIES**

Designing and manufacturing  
play equipment in the UK for  
over 21 years specialising in:

- Multiplay Towers
- Net Play
- Aerial Runway
- Outdoor Gyms
- Roundabouts & Seesaws
- Spring Rockers
- Slides
- Trim Trails
- BMX & Mountain Bike Tracks
- Seats & Bins
- Fencing
- Surfacing Solutions
- Bespoke Build Service



**[www.fenandleisure.co.uk](http://www.fenandleisure.co.uk)**

Tel: 01354 638359 Email: [sales@fenandleisure.co.uk](mailto:sales@fenandleisure.co.uk)

**BUILDING**

**DECONSTRUCTION**

Buildings bought and all materials recycled/  
upcycled

Pre 1930s preferred  
but all buildings considered  
from barns to cottages  
including site clearance

**FREE QUOTATIONS GIVEN**

We have a large number of salvaged  
**ARCHITECTURAL ITEMS FOR SALE**  
Bricks & other building materials,  
roof trusses etc.

Firewood, plants, and hanging baskets

**COME IN AND SEE US  
AND HAVE A BROWSE!**

Call Matt or Sarah Lawrence on  
Tel: 01354 638977 or, Mobile: 07856 291787  
Toll Farm, Ha-Penny Toll Road,  
Three Holes, Norfolk,  
PE14 9LJ

Email: [buildingdeconstruction@yahoo.com](mailto:buildingdeconstruction@yahoo.com)

## Village Shop! - only one month left! - Paul Haresnape

**Just another 31 days!** That's all the time left for YOU to influence a momentous change in the village, and possibly win a £50 prize! The Community Owned Shop consultation survey closes on the 31st of this month. Survey forms were circulated in last month's Heron, but if you've lost yours, we'll get you another if you call us on 638381 or you could easily do it online—go to the Facebook page and click the SurveyMonkey link. **BUT HURRY - NO ENTRIES AFTER 31st OCT!**

### Why should I bother?

If the Community Shop proves viable and sustainable it will enhance the village. It is one of the factors house buyers consider positively. It will put value on your house!

You could win £50!

Community Shops particularly benefit those who are disadvantaged by lack of personal transport, limited mobility, and those seeking employment or volunteering opportunities.

### Why do we need the survey?

There are many sources of funding out there. The Working Group have been looking into how we

can get some of this for our shop. Unfortunately they don't just hand it out "willy nilly" but have to be convinced that the project is viable and sustainable. Neither do they accept our word for it. **They only accept EVIDENCE!** One of the forms of evidence is the number of survey forms that are completed. This demonstrates the level of interest in the Community Shop.

The questions on the survey form, when collated, form the evidence that there will be volunteers to do the work needed to deliver the project, as well as provide information to the management of the type of shop the community wants.

### Moment of truth

By the middle of November we will know if there is the support that such a Community Shop needs in this village. We'll know if we have the Community to make it happen, we'll know if we have enough information to go ahead, or if we have to forget the whole thing!

## And it's ALL up to YOU!

### Advertise in THE HERON

FULL PAGE(27.7cm high x 19cm wide)  
occasional inclusions by special arrangement

HALF PAGE(13.4cm h x 19cm w)

6 issues £72

12 issues £138

QUARTER PAGE(14cm h x 9.4cm w)

6 issues £36

12 issues £69

BUSINESS CARD(5.8cm h x 9.4cm w)

6 issues £18, 12 issues £34

DOUBLE BUSINESS CARD(5.8cm h x 19cm w)

6 issues £34, 12 issues £64

(You should provide your own artwork, but if necessary we can do it for you at extra charge.  
price on application)

ALL ADS MUST BE RECEIVED AND PAID FOR BY  
25<sup>TH</sup> OF THE MONTH PRECEDING MONTH OF ISSUE

Block booked ads can be changed, but any required changes must meet the above copy date.

Small personal ads - 10p per word, photos extra  
Village fundraising events & personal greetings usually free

Tel: 01354 638381

Email [adverts@theheron.info](mailto:adverts@theheron.info)

It is the responsibility of advertisers to ensure their advert complies with Advertising Standards Authority Codes of Practice.



## HANDYMAN/GARDENER

NO JOB TOO SMALL

REASONABLE

HOURLY/DAY RATES

All types of gardening -  
mowing, hedge trimming,  
weed clearance etc.

Gutter clearance, repairs,  
and all sorts of other  
handyman jobs.

call - RYAN or ARIANNE

on 01354 638990 or

Mobile - 07841516379





**L.W Vehicle Services**  
**Car & Commercial repairs**



Est 2003

- ~ Electrical and Mechanical Diagnostics and Repairs
- ~ MOT Preparation & Testing
- ~ Servicing and Inspections
- ~ On Site Service
- ~ Breakdown / Recovery Service
- ~ Van and Car Sales

Contact Lee on 07717 738796 Or Tel 01354 610172  
March Road, Welney



Maximise the enjoyment of  
your home  
with the professional help of

## **Brimstone**

**Garden Design Services**

in association with

## **SFC Services**

**Design Development Maintenance**  
**Hard and Soft Landscaping**  
**Household Repairs and Building Maintenance**

for free estimates, contact either

Cliff 01354 638217 or 078 080 78518  
cliff@brimstonegardendesign.com

or

Steve 01354 638964 or 07725 866445  
sfclifford67@gmail.com



**Paul Braybrooke**

# ***Oil Fired Boiler Engineer***

**Boiler Servicing & Breakdown Service**

**Commissions**  
**Tank Replacements**

**Phone 01353 777788**  
**07946 735691**



## **Golding Feeds & Nursery Ltd**

*For all of your Pet, Animal & Garden Requirements  
Hall Road, Outwell  
Wisbech, Cambs. PE14 8PE*

**Open 7 days a week: Mon - Fri 8am - 6pm  
Sat 8am - 5pm  
Sun 9am - 2pm**

*Tel: 01945 772802  
Mobile: 07768 397626  
Fax: 01945 773159*



*email: taglodge@aol.com  
www.goldingfeedsandnurseryltd.com*

### **Upwell Computer Repairs**

**Virus Removal - Upgrades - System Service -  
New Machine setups - Wireless setups -  
Printer setups - Call out repairs**

**Phone - 01945 772717/07849 778525  
E-mail - upwellcomputerrepairs@gmail.com**

### **BRIAN TWEED & SON LTD**

*Family Butcher  
Town Street, Upwell.*

**Tel: 01945 773248**

**Fresh beef, pork, lamb and poultry.  
Our specialities are home made  
sausages and burgers.  
Home cooked ham, roast beef,  
roast pork and haslets.**



## **The Dun Cow**

**Green Lane, Christchurch. PE14 9PG**

**Weekdays open from 5.00 pm  
Fri, Sat & Sun open from 12.00 noon  
Sunday Lunches ~ 12.00 - 2.30**

**Happy Hours  
Friday 5-6pm  
Saturday 6-7pm  
All Draught beers £2.50/pint**

**Alternate Wednesdays 12th & 26th Oct - MEAL DEAL 2 courses for £5.50 - Pre-Booked ONLY**

**Bookings - 01354 638323 - Bookings**

### **SANDRA KAY**

**SOFT FURNISHINGS & CURTAINS**

**HAND MADE (your own fabrics)**

**01354 638478**

### **A JONES & SON**

**TELEVISION SALES/REPAIRS/INSTALLATION**

**FREE LOCAL DELIVERY  
FIRST CLASS AERIAL INSTALLATIONS/ADDITIONAL POINTS**

**26 March Road, Wimblington, March, Cambs PE15 0RN**

**Tel: 01354 740320  
CLOSED ALL DAY TUESDAYS**

## **Sick of Low Building Society Rates?**

**We can introduce you to other options offering:**

**Up to 12% per year, paid monthly. That's £100 per month for £10,000.**

**Shaun Ginley Asset and Legacy Protection. Tel. 07712 659 292.**





# TOWNLEY SCHOOL AND PRE-SCHOOL

Christchurch, Wisbech, Cambs. PE14 9NA

Email: [office@townley.cambs.sch.uk](mailto:office@townley.cambs.sch.uk)

Website: [www.townleyschool.org.uk](http://www.townleyschool.org.uk)

Tel/Fax: 01354 638229

Headteacher: Mrs Maria-Anne Higgins



We are holding another 'Bags to School Collection'. If you have any clothing, paired shoes, hats, handbags, ties and soft toys which can be re-used please drop them off at school in a bin bag by 9am on Tuesday 18th October.

## Provisional Diary Dates

5/10— Harvest Service at the Church 1.30pm

20/10—Last Day of Half Term

31/10—Back to School—Start of Friendship Week

13/12-Christmas Play

14/12- Christmas Play

19/12-Christingle

20/12- Last Day of Term

When I joined the school, the School Council raised the issue of uniform as they all wanted to look like part of the same team. In response to a questionnaire the children and school community selected the new uniform. We have tried to retain the history of the school, keeping the Latin motto and maintaining the red and blue. We hope that you have noticed how smart they are looking.

The local authority are seeking comments from a wide audience and request your views on a proposal for a new secondary school in Wisbech. I have put the full consultation document on the school website (with the newsletters) [www.townley.cambs.sch.uk](http://www.townley.cambs.sch.uk) for you to read. If you require a paper copy please speak to Miss Chisholm in the school office.

## Defibrillator Update

We are thrilled to announce that Andrew Barlow from the East of England Ambulance Service delivered our defibrillator and cabinet on Thursday. It will be ready for use as soon as it has been installed and training has been undertaken. Andrew and his colleague have kindly offered to provide the training for free, in their own time. As soon as we have dates for this we will let you know.



## **Beauty Treatments By Jane**

**N.V.Q. – i.b.d. – Babcac**

**LCN Microdermabrasion  
Facials**

**St.Tropez Spray tanning  
Gel pedicures  
Shellac manicures  
Week-end & semi permanent  
eyelashes**

**Rose Cottage,  
Christchurch  
Telephone: 01354 638378**

## **AQUA & FLAME**

**Gas Safe Registered**

**CSCS Registered**

**All Plumbing and Heating work undertaken**

**Alan Curtis  
64 Church Road  
Christchurch  
PE14 9PQ**

**Home 01354 638733      Mob 07976205695**

**All tiling including floors**

**Underfloor heating**

**All Electrics**

**All Plumbing**

**All work carried out by  
certified installers**

**Free estimates and design consultation**

# **MAJESTIC**

**WINDOWS . DOORS . ROOFING**

**BI - FOLDS . CARPENTRY**

**CONSERVATORIES**

**COMPOSITE DOORS**

**HOUSE RENOVATIONS**

**GARAGE CONVERSIONS**

**FASCIA, SOFFIT, GUTTERS**

**FREE QUOTATIONS AVAILABLE**

**MIDDLE-MASS@LIVE.CO.UK**

**MOBILE : 07875 745125**

**OFFICE : 01354 461172**

**MARCH, CAMBS**



# The Joan Smith Column

Joan began work at Jermyn's ...



**Well! I guess they must have liked me** as they encouraged me to do more and more things! The local papers had huge adverts about Customagic Chair Covers at Debenham's; floral, plain, and patterned; all mix & match. I had many enquiries as folks came in to look. Everyone seemed to think that they were the best thing since sliced bread. I, of course, explained how good they were, how versatile, and how easy it was to take them off and wash and dry them. The nylon they were putting in the material was supposed to be great. Personally I had fabric ones that fitted with pleats around the bottom. These took a lot more ironing but I thought them much nicer.

I was encouraged by head office to go out and take the demo covers for the customers to try for themselves, with my help of course to make sure they bought the right ones. Orders would then be placed at the end of each day in the order office. These were then all parcelled up and put on the next goods train. I would then be informed as to when my orders would be arriving. The warehouse man would take the little van and collect them from Lynn Station. This is how things usually always happened but the day came when I had to go to Great Massingham. The night before I got the road atlas from the car and found Great Massingham. I wrote down all the road numbers and the address I had to go to. I clocked in at work as usual, to explain to Mr Melton, who would authorise my mileage. But it was not him I needed but the supervisor. She would write on the back of my time sheet in my folder. I would have to say what time I left for Kings Lynn and later what time I left Kings Lynn for my return. Maureen the supervisor said she would check it all when I came back. She told me to write it all down and give it to her and she would make the necessary adjustments, but, I was not to tell Mr Misery Man. Oh! I thought, I am not the only one that feels that way about him. I never said a word to anyone as I had only been there a couple of weeks. So keep your thoughts to yourself Joan, I thought. That's best!

I really enjoyed my time at Jermyn's and worked there for just over two and a half years, but, then a new opportunity came to light.

More on that next month...

## TREE QUIZ.

Careful, They are not all British!

1. Very sweet sauce
2. Plenty from Iceland
3. Sounds like New Year in Scotland
4. Sounds like The fun place at the seaside
5. Robin Hood's tree
6. Found on both hands
7. Favourite holiday site in Colorado
8. What naughty boys feared
9. Does this make you a favourite
10. Good for a bow
11. Sounds almost very happy
12. This could be very quick
13. Ideal with a large gin
14. A spreading tree
15. Mobile phone network
16. Neat and tidy
17. Often antique shade
18. Is it a bird or a
19. Feeling ill again
20. Used for hitting a ball

Answers page 25

## Jubilee Handyman Services

**Window & Gutter cleaning**

**to**

**Gardening & Maintenance**

**No Job Too Small**

**Ring Lee or Emma**

**01354 638 098 / 07486 397 510**

## J. Mallett Carpentry

*All types of carpentry work undertaken including doors, laminate flooring, kitchens.*

Contact Jonathan Mallett

t. 01354 638656

m. 07581 368725

j.mallettcarpentry@hotmail.co.uk

[www.facebook.com/jmallettcarpentry](http://www.facebook.com/jmallettcarpentry)

[www.tackk.com/jmallettcarpentry](http://www.tackk.com/jmallettcarpentry)



# Upwell Health Centre

*by Dr Paul Williams — West Norfolk CCG's Governing Body member responsible for Prescribing and Education and the CCG's prescribing team*

This newsletter contains some really important information about changes in the way you will be getting your prescriptions in future. Please read it carefully and feel free to ask us questions if things are not clear.

The first change is electronic prescribing. I have mentioned this was coming in past articles and now it is here. On September 21st we switched from issuing repeat prescriptions on paper to issuing them electronically. This will not affect everyone. Since the pharmacy opened in Upwell some of you have been what we call prescribing patients and some of you have remained as dispensing patients. Electronic prescribing only affects prescribing patients for now. About a third of you are prescribing patients and it is generally those of you living in Upwell and Outwell. If you live more than a mile from the surgery you are probably still a dispensing patient. We haven't bothered you with this distinction before as we have tried to operate a seamless service through our dispensary and pharmacy and it was immaterial which type of patient you were.

## What will it mean for you?

If you are a prescribing patient you will need to nominate which pharmacy you want to collect your drugs from. Most of you get your drugs from the pharmacy at the surgery and we have been encouraging you to fill out a form nominating the pharmacy for some time now. Some of you may have nominated a pharmacy elsewhere, for example in Wisbech. If you have already completed a form for that pharmacy you do not need to do another one unless you wish to change. You are at liberty to change your nomination at any time and you can do this at our pharmacy or by asking your GP during a consultation. It is important to note that you can collect an acute prescription from any pharmacy without nominating them for all your drugs, so don't be coerced to sign up for any pharmacy for all your drugs if you only want to cash in a one off prescription.

If you are not a prescribing patient the change will make no difference as we do not expect electronic prescribing for dispensing patients before 2018.

In the first few days after the change please allow an extra day to collect your drugs from our

pharmacy. It may take a few days to bed in the new system. However, once we are all used to it I expect the turnaround for prescriptions to be quicker.

Remember it

doesn't matter if we are using electronic or standard prescribing you can only request drugs on repeat your GP has authorised in advance. You cannot ask any pharmacy for a drug your GP has not already put on a repeat prescription.

If you currently get your drugs through one of the pharmacies in Wisbech offering a prescription delivery service can I remind you that the Welle Pharmacy here at the surgery offers the same service, and we would be happy for you to switch back to our pharmacy and continue to get home deliveries from us. Just ask to speak to Paula, our pharmacy manager, to request the change.

There is a second change coming at the same time as electronic prescribing. This will affect those of you who have asked us to provide you with a private prescription for your drugs, where the cost has been less than a prescription charge. The BMA have advised us of a legal opinion they have obtained about the legality of us offering you a private prescription. That ruling has indicated that we are in breach of NHS regulations if we continue to do so and therefore, reluctantly, we are going to cease offering these now electronic prescribing has started. Unfortunately this will mean an increased cost for some of you. As you probably know, those of you not exempt from prescription charges have to pay a charge (currently £8.40) for each item on the prescription. If you have more than 12 items in a year on prescription it is cheaper to purchase a prepayment certificate. This costs £104 for a year. You can pay this over a year by direct debit in ten instalments of £10.40 monthly. Once you have this ALL your prescriptions are covered so that includes any acute prescriptions you have, for example for antibiotics or pain killers, as well as the regular drugs you have each month for problems such as asthma and high blood pressure.

*Continued next column*





## Some Personnel News

Dr McDowell has gone on maternity leave in the last few weeks, by the time this publication is out there I expect she will have had her second child. We will welcome Heidi back next year but to help cover for her while she is away we welcome Dr Nick Rosier. Nick has recently retired after many years as a GP partner at the Clarkson surgery in Wisbech and so adds to the recent tradition we have established of employing Clarkson retirees following on from Dr Nigel Williams and Dr Ian Mason.

We are also sad to lose two of our nurses. Emily Gadsby and Raheal Alia. Emily has been with us for many years since she started as a practice nurse shortly after qualifying. She has been a well-liked and valued member of our team and we are all sorry to see her go but offer her our best wishes for the future. Raheal has only been with us a short time but she has already proved a valuable addition to the team. We are sad to see her go but thankful she is going to continue to help us out until we have found new nurses to fill the void.

This is a challenging time for the NHS with tremendous cost pressures and with a national shortage of nurses and doctors. The new appointment system we introduced in April is working quite well with everyone either getting an appointment at an agreed time or having a call back from one of the doctors to assess their medical needs, and getting appropriate treatment. We were pleased with the results of the recent patient satisfaction survey we carried out and we will continue to strive to provide you with a high level of service to keep you hale and hearty in the coming year. - Paul

## Sound can be Baffling - Steve Waye

Just to put this article into context, I have spent most of my life since the age of thirteen gigging in halls and venues around the UK and Europe. During my career I have played in almost every conceivable size and shape of hall or club.

Perhaps the one thing in common almost all of them have, is the complete lack of forethought regarding sound. Famed composer and musician Elgar is reported to have once said of the Albert Hall, "It is a building that could be used for many things, unfortunately music isn't one of them." So it should come as no surprise that the new Christchurch Community Centre was afflicted with the same problem of inadequate acoustics. To the credit of the hall's committee they decided to do something about it and asked me if I could help.

The main problem in halls such as these, are the uniformly hard surfaces, with little or no way to soak up the offending frequencies, allowing the signal from music or speech to bounce uncontrollably from surface to surface. This is known as reverberation (reverb for short) and is the reason in large areas such as stations that the announcements are all but inaudible. Because the walls are different distances from each other, the reverb times (the time the signal takes to bounce off the walls and come back to the listener) are different and results in a muddy and indistinct, sometimes inaudible sound. To deal with this problem as the centre was being planned would have cost many thousands of pounds, even to rectify it completely at this late stage would be prohibitively expensive, so I had to find a third way.

Using my experience of recording studios and with some extensive additional research I was able to come up with a DIY solution that would solve most of the problems. So with the help of Ruth and Colin Ingram, Geoff Harper and Peter Owen; acoustic panels covered in reverb busting material and containing specially formulated foam, were placed at regular intervals around all the walls, roughly at ear height both sitting and standing. Another problem that needed to be overcome was that bass frequencies tend to literally congregate in the corners of a room, further muddying the perceived clarity of music and speech. To solve this, different acoustic tiles known as Bass Traps, were positioned in the corners where the ceilings meet the walls, as well as another at speaker height in the corners.

I was pleased to discover only last week that this has vastly improved the situation and made the hall into a very usable space, with the addition of a



small PA system, the lack of clarity has been by and large solved.

So don't hesitate if you want to use the hall for meetings, functions or parties, as I feel sure we now have a hall that's fit for purpose. To book the hall please phone 01354 638478.



MOBILE CATERING

*For freshly cooked fish & chips,  
sausages, chicken and pies  
every Friday at the Dun Cow  
from 5.00 'til 8.00 pm*

For enquiries/quotations call:

**07756 170 700**

We also cater for private parties,  
functions, charity events



## **P R PARKER**

Established 1978

### **General Building and Maintenance**

CARPENTRY  
PLUMBING  
PLASTERING  
BRICKLAYING  
ROOFING

REFURBISHMENT  
AND  
RENOVATION  
**01354 638380**

GLAZING  
PAINTING  
DECORATING  
RENDERING  
GUTTERING

## **FREE ESTIMATES**

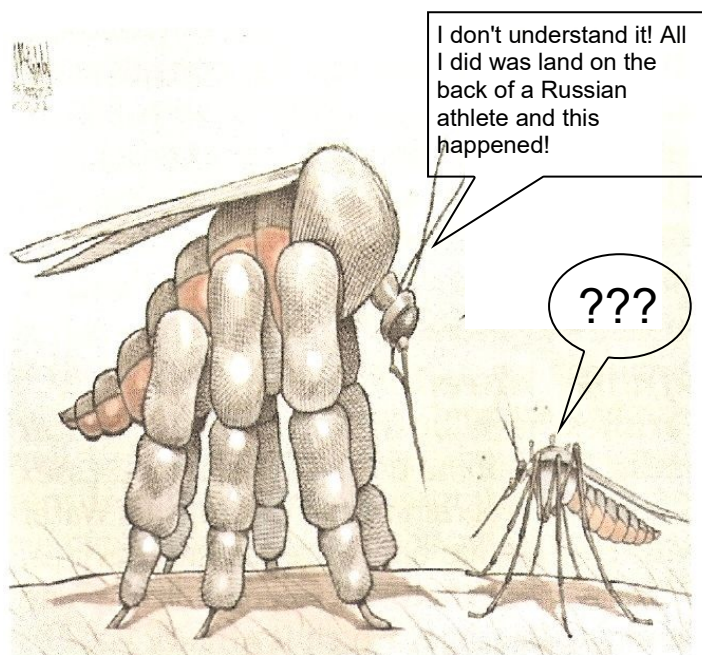
**All Types - Houses - Flats - Shops - Offices**



**Caroline's Flowers**  
*For All Your Floristry Needs*  
 West Star Farmhouse, Upwell Road,  
 Christchurch, PE149LJ  
 Find us at Caroline's Flowers on facebook   
**01354 638038 / 07915 647453**  
 carolinesflowers@outlook.com

**Farmers/Craft market  
 and Coffee Shop**  
**Lakesend Village Hall**  
 starting 7th Oct 10am-3pm then  
 every Friday until March 2017

**You Mozzie be Joking!**



Tree Quiz -The Answers	
1. Cherry	1. Maple
2. Lime	2. Ash
3. Lemon	3. Mahogany
4. Chestnut	4. Beech
5. Orange	5. Oak
6. Spruce	6. Palm
7. Pine	7. Aspen
8. Plane	8. Birch
9. Sycamore	9. Poplar
10. Willow	10. Yew

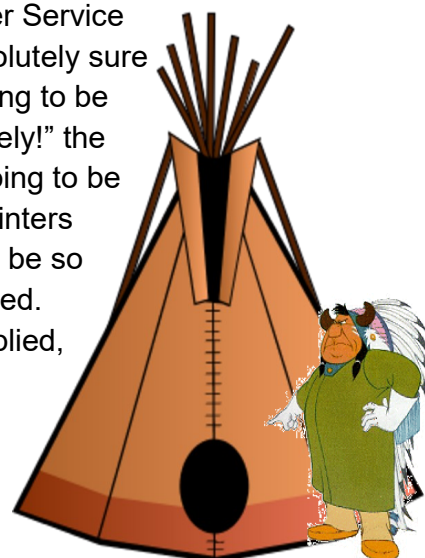
## Is it going to be a very cold winter?

With the recent passing of the Autumn Equinox on Thursday 22nd September, Autumn is now officially here. It has oft been said that when the trees, especially holly, are laden with berries that it promises to be a harsh winter. Though some may consider this an old wives tale, in the winter of 2009/2010, a spectacular year for holly berries, as predicted Britain experienced its coldest winter for 31 years! In the past, commonly, if the east coast of the US suffered bad weather, we got it around 10 days later.

On the very day of the autumn equinox the Shinnecock Native American Indians, an East Coast tribe, asked their new Chief if the winter was going to be cold or mild. Since he was a Chief in a modern society, he had lost the old Indian skills and no longer could predict what the winter weather was going to be like. Nevertheless, to be on the safe side, he replied to the Shinnecock Tribe that the winter was indeed going to be cold and that the members of the village should collect wood in order to be prepared.

But also being a practical leader, after several days he got an idea. He went to the phone booth, called the National Weather Service and asked, "Is the coming winter likely to be cold?" The weather man replied "It looks like this winter is going to be quite cold indeed!" So the Chief went back to his people and told them to collect even more wood. A week later, he called the National Weather Service again. "Is it really going to be a very cold winter?"

"Yes," the man at the National Weather Service again replied, "It is definitely going to be a very cold winter." The Chief again went back to his people and ordered them to collect every scrap of wood they could find. Two weeks later, he called the National Weather Service again. "Are you absolutely sure that the winter is going to be very cold?" "Absolutely!" the man replied. "It is going to be one of the coldest winters ever!" "How can you be so sure?" the Chief asked. The weatherman replied, "The Indians are collecting wood like crazy! - This is how stock markets work!"



# Useful Telephone Numbers

Age UK Cambridgeshire	0300 6669860
Alzheimer's Society (Fenland)	01945 580480
Anglian Water – Susan Bull	08457 145 145 101
Christchurch Resident's Association	01354 638990
Churchwarden - Mrs. D. Symons	01354 638352
Citizens' Advice Bureau, Wisbech	01945 464367
Community Car Scheme (to book a journey)	07902 316360
Community Centre bookings	01354 638478
Community Fire Safety Officer	07717858166
County Councillor - Fred Yeulett	01354 653763
District Councillor - Will Sutton	01354 638025
District Councillor - Michelle Tanfield	07908 707129
Electricity Faults - UK Power Networks	105
FACT	01354 661234
Fenland District Council	01354 654321
Floodline	0845 988 1188
Library - March	0354 0455225
National Debtline	0808 808 4000
Norfolk Dial-a-Ride	01553 770310
Parish Clerk - Jane Rees	01354 638131
Parish Councillor - Jill Bliss	01354 638343
Parish Councillor - William Beswick	01354 638758
Parish Councillor - Roger Gladwin	01354 638538
Parish Councillor - Geoff Harper	01354 638681
Parish Councillor - James Hughes	01354 638310
Parish Councillor - Peter Owen (Chair)	01354 638847
Parish Councillor - Nigel Russell	01354 638279
Pharmacy at Upwell Health Centre	01945 774934
Police - PCSO Sue Clarke	07738025220
Police - Emergency	999
Police - Non Emergency	101
Telephone Complaints	0345 145000
Townley School	01354 638229
Trading Standards	845040506
Train Information	08457 484950
Upwell Health Centre (and out of hours)	01945 773671
Water Emergencies	08457 145145

Club Contacts	
Book Club - Sheila Day	07946 635908
Craft Club - Wendy Yates	01354 638448
Garden Club - Marion Hawthorne	01354 638230
Short Mat Bowls Club - Wendy	01945 772732
WI - Peggy Warby	01354 638339

Neighbourhood Watch	
Colin Steenson - Church Rd (East)	01354 638664
Sandra Kay - Crown Rd	01354 638478
Peter Knight - Church Rd (West)	01354 638779
David Yates - Church Rd (West)	01354 638448
Julian Swallow - Upwell Rd (North)	01354 638679
Jackie Wood - Upwell Rd (North)	01354 638679
Simon Freeland - Upwell Rd (South)	01354 638802
Richard Guilford - Area Co-ordinator	01354 638990
David Harrowing - District Co-ord.	01945 870963

## And Finally...

So Autumn's here then! Rumour has it that, in about six weeks time, we are going to experience the worst Winter weather we've suffered in the last thirty years. And, supposedly, its going to be with us for about four months including 4 to 5 snow drifts. So Happy Christmas! Guess Bing Crosby would have loved it! Better get those toboggans out – Oh! But we've got no slopes to speak of around here. And what about me poor chickens and me bees? Hot toddies all round I guess!?

AFC Christchurch will be playing on ice and it'll be a good test for the stability and weatherproofing of our new Community Centre. Still one small bonus is that it might put some of those building projects on hold! (lol)

Still, on to better things - Our new vicar, Ian Brady, will be at the Harvest Festival in Christchurch next Sunday on October 2nd. Why not come along and meet our new incumbent? They are a lovely couple Ian & Lynda and have two extremely friendly Beddington Terriers.

Shop or no shop? - that is the question! Judging by the lack of response to the Village Shop Survey Forms that were put out in The Heron last month, most of you don't give a damn! Great shame if that's the case as it would make a great difference to the village, including upping the value of our homes! But 'c'est la vie!'

Talking of Christmas – don't forget to check out the Garden Club's Christmas Shopping trip to Bury St. Edmund's on Sunday 27th November. It'll soon be here so this is your early warning! You're all invited – Members - £10, Non-members - £13. Always a great trip! Only 88 shopping days till Christmas – probably only 84 by the time you get this! So must dash!

**Web links in the Heron are active  
when viewed in our online version**  
[www.theheron.info](http://www.theheron.info)





Jade Sarson, winner of the 2014 Myriad Editions First Graphic Novel competition.

opportunity to develop your style, ask questions and collaborate. The workshop costs just £5.00 a day and places are limited, so find out more and book your place at

[www.birdsnestbooks.co.uk](http://www.birdsnestbooks.co.uk)

This project is supported by the Market Place. Market Place is part of the [Creative People and Places](http://www.creativepeopleandplaces.org.uk) programme for Fenland and Forest Heath, initiated and funded by Arts Council England. Find out more at

[www.cppmarketplace.co.uk](http://www.cppmarketplace.co.uk)

## GRAPHIC NOVEL WORKSHOP

Bird's Nest Books has informed us about an amazing opportunity to learn about creating graphic novels with illustrator and comic artist Jade Sarson, winner of the 2014 Myriad Editions First Graphic Novel competition.

The workshop, for 15-25 year olds, will be held in March Town Hall over three days, on October 24<sup>th</sup>, 25<sup>th</sup> and 26<sup>th</sup>. Participants will learn about storytelling, elements of a page, different comic styles, character design, creating a background, portraying emotions, the stages of comic design and more. No particular ability or previous experience is required, just an interest in comics and graphic novels. The genre combines both art and storytelling, so if your interest lies specifically with just one, this workshop is still for you. There will be plenty of

Image from <https://vimeo.com/64196221>



**PLACES LIMITED**  
**MORE INFO AND BOOKING AT**  
**WWW.BIRDSNESTBOOKS.CO.UK**  
**OR CALL 07590 116383**



This project is supported by the Market Place Development Commission Fund. Market Place is part of Creative People and Places arts engagement programme developed by Arts Council England with the support from National Lottery funds. Find out more at [www.cppmarketplace.co.uk](http://www.cppmarketplace.co.uk)





# AFC Christchurch get their season under way!

**Lots of chances on goal** but none hitting the net - was the main story of AFC Christchurch's first league match, ending in a disappointing result!

It was the team's first home match following a period of many years without a team. Thanks are due to the players that helped put up nets and mark out pitch. Before the match the team had photographs with the sponsors. Thanks to Ruth and Colin for selling hot drinks and

snacks. Christchurch had a fantastic start to the match. All the play was in the opposition's half. Unfortunately Fenstanton scored two easy goals on the break. AFC continued to battle hard but weren't able to score. They had a penalty saved just before the final whistle.

Although they were disappointed to lose their first home match, as a new team, under a new manager they have a lot to be proud of!



## Cup win brings fresh hope - Yvonne Chenery

**The sun definitely shone** on AFC Christchurch in their first cup game. A much more positive and disciplined team - opening the scoring in the first 5 minutes. They dominated from the start scoring their second goal in the 15th minute. Benwick Res pulled one back in the 29th min. AFC Christchurch got their 3rd just before half time. They came out with the same determination for the second half. The final whistle went with a result of AFC Christchurch 4 Benwick Res 1. Fantastic result.

The team really worked well together with confidence and determination, well done Pete and players and thanks to Dean for stepping in as Ref at late notice. Lets hope it's the first win of many. Thanks to all the locals who came to support the team and for those that have moved to pastures new, but came back to support the team.

*Above - the team and sponsors show off the new kits before the first League match*

## Football Results

### Mead Plant & Grab 5B League

Coldham	6	0	AFC Christchurch
AFC Christchurch	0	2	Fenstanton Res

### Reg Haige & Arthur Peck Cup

AFC Christchurch	4	1	Benwick Res
------------------	---	---	-------------

### Football Fixtures (home team first)

#### Mead Plant & Grab 5B League

1 Oct 3pm AFC Christchurch v Cottenham United Res  
15 Oct 3pm Marchester United v AFC Christchurch (Estover Playing Field)

22 Oct 3pm AFC Christchurch v Chatteris Town B  
5 Nov 2pm AFC Christchurch v Coldham United Res

#### Cambs Lower Junior Cup

8 Oct 2:45pm Coldham United v AFC Christchurch

Any views expressed in The Heron do not necessarily reflect the views of  
The Heron Editorial Team.

The team aim to provide a balanced view of village opinions where such views are expressed.  
We reserve the right to edit any submissions where we feel this is appropriate.