

# NEW The Heron

Community Magazine

Delivered FREE to the residents of Christchurch

September 2014

50p per copy - 75p where sold

Coming soon...

## *In this issue!*

|                           |    |
|---------------------------|----|
| Diary Dates .....         | 2  |
| Editorial .....           | 3  |
| Letters to the Editor ... | 3  |
| Wills joins EAAA .....    | 6  |
| Stepping Stone .....      | 7  |
| What is it? .....         | 7  |
| Care Network .....        | 7  |
| Church Services .....     | 9  |
| Connie Symons Pt2 .       | 10 |
| Film Review .....         | 12 |
| Alan Russell Column       | 13 |
| Poultry Project.....      | 14 |
| CRA proposal .....        | 16 |
| Garden Club .....         | 17 |
| Women's Institute ...     | 17 |
| AWA reply to CRA ...      | 18 |
| Advertising Rates .....   | 18 |
| Council Minutes .....     | 19 |
| Voting Changes .....      | 22 |
| HeronAid .....            | 23 |
| Townley News.....         | 25 |
| Pilates for All .....     | 25 |
| Crossword .....           | 26 |
| Useful Numbers .....      | 28 |



## Prince William takes a job with East Anglian Air Ambulance

See page 6 for the full story

### Editorial Team:

Richard Guilford – Editor

Paul Haresnape – Technical Support

Vivien Haresnape – Administration

### Advertising:

Copy:

Enquiries:

Web Site:

[adverts@theheron.info](mailto:adverts@theheron.info)

[editor@theheron.info](mailto:editor@theheron.info)

01354 638990 or 01354 638381

[www.theheron.info](http://www.theheron.info)

# DIARY DATES

If you have any important up and coming events let us know for inclusion here:

|                      |  |
|----------------------|--|
| Sep 2 <sup>nd</sup>  | Pilates for all ages - 6:30 Townley School Hall - All Welcome - £5 per session |
| Sep 3 <sup>rd</sup>  | Christchurch Craft Club – Corn Dollies   |
| Sep 4 <sup>th</sup>  | Townley School - Start of Autumn Term  |
| Sep 5 <sup>th</sup>  | “Cake, Coffee and Chat” Parish Church 2-3pm - All Welcome - see Page 9         |
| Sep 5 <sup>th</sup>  | Mobile Library - visits layby Upwell Rd - 3:00pm to 3:40pm                     |
| Sep 6 <sup>th</sup>  | Gymkhana & Pony Show - Outwell Playing Field                                   |
| Sep 7 <sup>th</sup>  | All-Age Worship - Parish Church - 11:00am                                      |
| Sep 7 <sup>th</sup>  | Charity Dog Show - Upwell Playing Field  |
| Sep 8 <sup>th</sup>  | Parish Council Meeting - 7:30pm - Sports Pavilion - Public Welcome             |
| Sep 9 <sup>th</sup>  | WI - Cookery Demonstration - Townley   |
| Sep 9 <sup>th</sup>  | Pilates for all ages - 6:30 Townley School Hall - All Welcome - £5 per session |
| Sep 10 <sup>th</sup> | Christchurch Resident’s Association Meeting - The Old School - 7:30pm          |
| Sep 12 <sup>th</sup> | “Cake, Coffee and Chat” Parish Church 2-3pm - All Welcome - see Page 9         |
| Sep 13 <sup>th</sup> | Summer Ball - Outwell Village Hall   |
| Sep 14 <sup>th</sup> | Morning Prayer - Parish Church - 9:30am  |
| Sep 14 <sup>th</sup> | Bingo in aid of Children’s Charity - Three holes Village Hall                  |
| Sep 16 <sup>th</sup> | Pilates for all ages - 6:30 Townley School Hall - All Welcome - £5 per session |
| Sep 16 <sup>th</sup> | Greenfingers Garden Club - A to Z of Bulbs                                     |
| Sep 19 <sup>th</sup> | “Cake, Coffee and Chat” Parish Church 2-3pm - All Welcome - see Page 9         |
| Sep 20 <sup>th</sup> | <b>“HeronAid” - Concert - Townley School - 7pm</b> - Fundraiser - All welcome  |
| Sep 21 <sup>st</sup> | Holy Communion - Parish Church - 6:30pm  |
| Sep 23 <sup>rd</sup> | Christchurch Garden Club - Talk on Fushias by Tim Jellis - Townley School      |
| Sep 23 <sup>rd</sup> | Pilates for all ages - 6:30 Townley School Hall - All Welcome - £5 per session |
| Sep 26 <sup>th</sup> | <b>McMillan Coffee Morning - Parish Church 10-12am</b>                         |
| Sep 26 <sup>th</sup> | “Cake, Coffee and Chat” Parish Church 2-3pm - All Welcome - see Page 9         |
| Sep 28 <sup>th</sup> | Morning Prayer - Parish Church - 11:00am                                       |
| Sep 30 <sup>th</sup> | Pilates for all ages - 6:30 Townley School Hall - All Welcome - £5 per session |
| Oct 7 <sup>th</sup>  | Christchurch Craft Club - AGM & Making Stars for Christmas                     |
| Oct 8 <sup>th</sup>  | Upwell Hall - Ian King, Watercolour Artist - 6:30pm                            |
| Oct 11 <sup>th</sup> | Christchurch Parish Church Harvest Supper - 6:30pm                             |
| Oct 11 <sup>th</sup> | Upwell Methodist Church Harvest Festival - 2:00 - 4:00pm                       |
| Oct 14 <sup>th</sup> | Christchurch WI - Games Evening  |
| Oct 18 <sup>th</sup> | Upwell Playing Field - Pumpkin Ball  |
| Oct 26 <sup>th</sup> | St Clements Church Harvest Lunch - 12:30pm                                     |
| Oct 28 <sup>th</sup> | Christchurch Garden Club - Talk on Wildlife by Jeff Harrison                   |

**At the time of going to press, all information is as accurate and up to date as we can make it. Changes and updates may be published subsequently. All information contributed by outside agencies, including dates etc., will be assumed to be correct.**

# EDITORIAL

So! Relegated to page 3! Guess I'll have to up my game!

Well....it was the young HRH I suppose!... But, actually we have decided now to feature a cover photo every month for the lead article. Hope you all think that's a good idea?

A few controversies this month, as you will read inside. Please let us have your views. It is after all YOUR magazine. You could just write a letter to the Editor, or, if you feel inspired, maybe an article.

We would also welcome any suggestions you might have for improving the magazine. Recipes, quizzes, interesting photos, or, whatever else you might come up with all would be most welcome!

We hope that as many of you as possible will come along to the HeronAid concert on Saturday 20<sup>th</sup> of this month. We promise you a good evening's entertainment, and a few surprises, for "just a fiver"! All proceeds from the ticket sales will go towards producing future colour pages in The New Heron. Catering on the night will be done by The Friends of Townley School (FOTS) and all proceeds from food sales will go towards the school pool fund.

Apart from the usual tea, coffee, biscuits and cakes, the FOTS will be providing Jacket potatoes with a selection of tasty fillings. So why not just have a light tea, or no tea at all and eat with us!? Food will be served from the interval onwards. You may bring your own drink with you if you wish!

Should be a good night we are hoping to raise £500 for The New Heron, so please come along and support us, and help raise funds for the FOTS too! (see page 23)

See you all there!?



## Letters to the Editor



Hi Richard

Would you please include the notice below in the next edition of The Heron.

### POPPY APPEAL

"Can anyone spare 1 or 2 hours (per year) selling poppies for The Royal British Legion Poppy Appeal. We need 2 people to sell poppies in Church Road and The Croft in Christchurch for Remembrance Day this year. The Poppy Appeal is such a worthy cause. If you can help, please telephone Lesley Kennedy (Poppy Appeal Organiser) on 01354680401. Thank you"



*Hope some of you will come forward - Ed'.*

Dear Editor

Having only been a resident of the village for a short time, but being equally pleased that Christchurch has managed to retain a "local" it is with great sadness that I see the publican has taken the steps to ban dogs due to some "numpty" bringing one with them, on a Sunday when food is being served in the bar and then proceeding to share their own dinner with the dog at the table. ??? Why on earth the publican chose to penalise the rest of us and not the offenders beggars belief. Surely this person should have been asked politely to leave the dog outside or take it home and then return without the Dog as food was being served. As a responsible Dog owner I can fully understand the hygiene implications of animals around food and appreciate that not everyone shares our feelings towards our canine friends so would never dream of taking any of our dogs into any pub during a food service, a sentiment which I am sure all other responsible dog owners will agree with. Surely it would be better for the management to educate the selfish "numptys" of this world rather than penalise all our canine friends and their sometimes inadequate owners as there is nothing nicer than to break their

*Continued over*

## The New Heron Online

Have you had a look at the New Heron Online?

Perhaps you know folk around the world that would like to keep up with what's going on in Cambridgeshire? Or perhaps you yourself would like to see it in full colour.

If so go to [www.theheron.info](http://www.theheron.info) and click on the link "to view the latest Heron online".

You can also see many of the recent Herons in the online archive as well as resources that we cannot find space to publish in the print version. We are now publishing the Parish Council minutes and the agenda for upcoming meetings soon as they are available.

Continued from p3

evening constitutional with a pint or 2 in the local warming their bones and ours in front of a roaring fire on a cold winters eve! Although not a daily user of the pub I have enjoyed its pleasures on a regular basis with my family, which by the way includes our dogs, and have been met with a seemingly happy & informative publican who I enjoyed the company of and of the other locals who also enjoyed time spent there and the therapeutic values of dog caressing, something some miss as they are non-dog owners and the socialisation for the dogs is good too. One can only hope that the publican on considering this letter, may have a change of heart and welcome back our canine friends at appropriate times, while educating the "numptys" of the world in the error of their ways, as a rural English family pub without dogs is like having a pub without beer!

Jackie Wood

*I hope that Phil will have a rethink on this one, perhaps he'll drop a line in response? - Ed'.*

Dear Richard

I would like to thank everyone who made my birthday such a very happy occasion, and for the many birthday wishes and gifts I received. Thank you all!

Val Parker

*Congrats! - Ed'.*



### "THE GREEN MONSTER OF CHRISTCHURCH"

She may be seen munching as she moves through the village! Her brilliant lime green body dazzling all who meet her! Be sure to wear your sunglasses - whatever the weather!

4 Do you know her?

## Beauty Treatments

By  
Jane

N.V.Q. – i.b.d. – Babtac

LCN Microdermabrasion  
Facials

St.Tropez Spray tanning  
Gel pedicures  
Shellac manicures  
Week-end & semi permanent  
eyelashes

Rose Cottage,  
Christchurch  
Telephone: 01354 638378

## The Little Local

Groceries and Newspapers, Fresh Bread,  
Fruit, Vegetables available.

Card Payments,  
Cashback up to £50  
Phone Top-ups

**Open 7 days a week.**

MON-FRI 7 am - 5.30 pm  
SAT 8 am - 5.00 pm  
SUN 9.30 am - 11.30 am

Church Road, Christchurch.






**Manea School of Gardening**


Partners: Alan Mitch (mobile 07738079804) Mary Larham (mobile 07925106643)

**HIGH STREET, MANEA, MARCH, CAMBS PE15 0JA**  
**Telephone: 01354 688089**

RHS QUALIFICATIONS is a nationally recognised awarding body offering a range of qualifications for professional horticulturists and keen gardeners of all ages.

We offer **Royal Horticultural Courses** at all levels  
 Theory & Practical

New courses commence in September and March

**PLANT SALES**  
 Saturdays only 10am – 4pm  
 March – June      September – October  
 Gardening Work undertaken

[www.maneaschoolofgardening.com](http://www.maneaschoolofgardening.com)      E-mail: [msog@btinternet.com](mailto:msog@btinternet.com)

Maximise the enjoyment of  
 your home  
 with the professional help of  
**Brimstone**  
 Garden Design Services

Design . Development . Maintenance  
 Traditional and Modern Garden Styles  
 Formal . Cottage . Oriental . Organic

**Contact Cliff for free advice**

**01354 638 217      078 080 78518**  
**[cliff@brimstonegardendesign.com](mailto:cliff@brimstonegardendesign.com)**

*Introducing –*



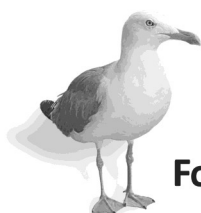
MOBILE CATERING

*Specialising in frying the finest fish and chips - freshly for you.*

Michael and Michele's customised mobile kitchen is designed to provide you with the finest, freshest fish and chips.

We can cater for parties, weddings, functions, fêtes, fairs and events, large or small – the possibilities are endless . . .

. . . and fish and chips is great value especially when compared with the costs of a buffet.



**For a no obligation quotation, call us today on 07756 170 700**

*“Bringing a little taste of the seaside to the Fens”*

# Wills joins the EAAA

**Prince William, Duke of Cambridge** will become a pilot of the East Anglian Air Ambulance, Kensington Palace announced last month. He will be paid the normal salary which will be given to charity. William is believed to be committed to working to help save lives, following his training with the RAF and his time piloting the Air Sea Rescue helicopter out of RAF Valley.

Prince William will be joining the team of Pilots, and will commence training, early in 2015, with Bond Air Services, from whom EAAA lease two aircraft. He will join their pilots who already fly on shift for us.

Since its inception in 2000, the East Anglian Air Ambulance has had incredible support from the population within the area it serves. Operating as a charity, it receives no funding from the government, and is entirely reliant on donations from the public.

Initially operating one Bolkow 105 from its HQ at Norwich airport, and covering the counties of Norfolk, Cambs and Suffolk, EAAA has grown to become one of the largest, busiest and most highly regarded air Ambulance operations in the UK.

Recently Bedfordshire has been added to their operational area. EAAA flies from two locations with two state of the art EC135 aircraft. Anglia 1 is still based in Norwich, and serves Norfolk and Suffolk. Anglia 2 is based at Cambridge Airport and serves Cambs and Bedfordshire. The maximum response time to anywhere in our region is 20 minutes.

A major step forward for the charity took place in 2008, when they made the transition to being a doctor led service. The highly skilled para-medics who work on the aircraft, were joined by critical care doctors. This means that extra equipment and drugs can be used at the scene. It also means that crucial clinical decisions and procedures can take place on scene. This has led to a profound effect on patient outcomes. Just about all the shifts now have these doctors on board.

Recently, following a lengthy and expensive process, EAAA became the first dedicated Air Ambulance in the country to operate during the hours of darkness. They now fly 16 hours a day using night vision and suitable lighting. In 2014 alone, 134 of the 1029 missions that were flown to the end of July used the NVIS (Night Vision) capability.

The helicopters fly 4-5 missions a day between them, 365 days a year and are tasked by the East of England Ambulance Service Trust who use the Air Ambulance as a valuable resource within the regional trauma network.

Chris Donaldson, - Area Fundraising Manager for EAAA said, "We continue to benefit from our wonderful public who enjoy taking ownership of what they perceive as 'their' charity. From 2p in a collection box, to substantial corporate donations, we use their support to improve our service!"

"We save lives every day!

We need you today, you may need us tomorrow!"



*The Dun Cow regularly raises funds for EAAA - Help them fill the bottle on the bar!*



## What is it?

Anyone know what this is? and where it is? Sent in by one of our readers, spotted on the wall concealed behind the Pyrocantha?

Answer next Month!

If the picture is not clear enough see it online (pg 3 to see how)



## Stepping Stone

The Stepping Stones project supports disabled people to access new sports activities in Cambridgeshire. This can be as a participant, coach, official or volunteer. All you need to do is call and we will do the research and match you with a local provider. We provide the necessary support to the club to enable you to participate, and can help access funding to engage you in the activities.

### Eligibility

Anyone with a long term health need or disability aged 14 +. No upper age limit

### Referral

Self-referral scheme simply call: 01223 301756 or email:

[steppingstone@cambridgeshire.gov.uk](mailto:steppingstone@cambridgeshire.gov.uk)

**Cost - FREE!**

Finding information can be hard for older people.  
Need Help?

**Community Navigators** are local volunteers who help older people find information on enjoyable activities and useful services

No question is too big or too small and can be about both the fun and the practical. It could be anything from finding leisure activities to where to get financial advice, or help to stay independent at home. Our job is to find out what is available; it's then your choice what to do and we are here to help.

Contact us and we will do our utmost to find an answer to your query!

**Call** your Fenland Coordinator, **Kathy Cornell on 01354 694413**

**Examples of information we can provide:**

- **Car Schemes and help with transport**
- **Luncheon clubs**
- **Mobility aids**
- **Help to access benefits**
- **Point you toward our Help at Home service – *Free short term practical and emotional help after a hospital stay, crisis or illness at home.***

## How can I help?

Just knowing what support is available can make older people feel safer, more connected to their community and able to stay independent and healthy for longer.

We are looking for people from Christchurch with a desire to help their community!

You can get involved by:

- **Volunteering**

You only need give a few hours each month. Training, support and expenses are provided.

- **Inviting us to your meetings or events**

We will be able to explain our projects and how they can help.

- **Tell us about your organisation**

We have information about 1200 organisations, but we would love to hear about things we have missed in and around Christchurch.

Contact Kathy Cornell

on **01354 694413** or **[kathy.c@care-network.org.uk](mailto:kathy.c@care-network.org.uk)**



**FENLAND LEISURE PRODUCTS**  
**PLAY SOLUTIONS**  
**SCHOOLS, PARKS &**  
**LOCAL AUTHORITIES**

Designing and manufacturing  
 play equipment in the UK for  
 over 21 years specialising in:

- Multiplay Towers
- Net Play
- Aerial Runway
- Outdoor Gyms
- Roundabouts & Seesaws
- Spring Rockers
- Slides
- Trim Trails
- BMX & Mountain Bike Tracks
- Seats & Bins
- Fencing
- Surfacing Solutions
- Bespoke Build Service



**www.fenlandleisure.co.uk**

Tel: 01354 638359 Email: sales@fenlandleisure.co.uk

# Outwell Timber

For all your Timber and Building Supplies

ISLE ROAD, OUTWELL

PE14 8TD

Tel: 01945 77 21 16

FENCING, PANELS, TRELLIS  
 TIMBER, PLYWOOD, DECKING

SAND, BALLAST, GRAVEL

SCREWS, NAILS, BOLTS

PAINT, SILICONE, HAND TOOLS

LOCKS, ELECTRICALS, PLUMBING,  
 GUTTERING  
 UNDERGROUND PIPE & FITTINGS

CEMENT, MULTIFINISH, PLASTERBOARD

# Auto Repair Centre

**MOT PREP**  
**SERVICING**  
**WELDING**  
**DIAGNOSTICS**  
**TYRES**  
**BRAKES**  
**EXHAUSTS**

**01354 657876 - 07512 792988**

**UNIT C7, THORBY AVENUE MARCH, CAMBS PE150BD**





# Parish Church Services

|               |       |                  |                         |
|---------------|-------|------------------|-------------------------|
| <b>31 Aug</b> | 11:00 | Rev K Fitzgibbon | United Service at MANEA |
| <b>7 Sep</b>  | 11:00 | Rev K Fitzgibbon | All Age Worship         |
| <b>14 Sep</b> | 09:30 | Mrs C Day        | Morning Prayer          |
| <b>21 Sep</b> | 18:30 | Rev K Fitzgibbon | Holy Communion          |
| <b>28 Sep</b> | 11:00 | Mr R Holding     | Morning Prayer          |



Every Friday afternoon, 2-3pm, there is "Coffee, Chat and Cake" in the Church.

My apologies for submitting last year's service dates for August by mistake, and for any inconvenience this may have caused. In particular this meant I wrongly advertised a coffee morning which didn't happen. I understand on the "grapevine" that a couple of people got all dressed up for this so my special apologies to them. - Andy

Date for your diary. There will be a Harvest Supper in October, (see below)

At long last, we have been able to start repairing the main wall. Obviously no bricks or materials will be stored on graves. We are hopeful that the work will be completed in late September/early October unless the weather is bad.

Daphne and Andrew.

## Christchurch Parish Church

### Harvest Supper

11<sup>th</sup> October 2014 - 6.30pm  
Townley School Hall

£6 adult



£4 child

#### Menu

Ploughman's, Fisherman's or Herdsman's Supper

\*\*\*

Choice of desserts

\*\*\*

Coffee or tea

Followed by light entertainment

Soft drinks will be provided. You may like to bring your own alcoholic beverages.

To book a ticket and to make your choice of main course, please phone

Helen - 638092 or Karen - 638781 or Ruth - 638419

# Editor's Interview with Connie Symons

## Memories of the Old Toll House - Part 2

Connie was known as "Auntie Con" to so many people in the village. Connie was much involved in village life. Serving on the Parochial Church Council; she was Church Warden for more than 15 years. She was enrolling Member of the Mothers Union, President of the Women's Institute, and served on the committee of the Over 60's Parish Tea; an event which still runs today as an annual lunch.

She enjoyed playing bowls for both Christchurch and her County; and will be remembered for her part in many of the village gala parades. In her later years, she also joined the Good Companions Club.

On showing Connie the A3 sized photograph of The Old Tollhouse which she remembered hanging on her wall, published in last months NH, she was 'delighted' and gazed into it looking at every detail. Memories flowed back of how the old building had been divided in two to make two completely separate residences for the Brooks and Connie's family.

Other photographs had surfaced too like the one shown below of Connie's time in the St. John's Ambulance, along with several other familiar faces, who may bring back a few memories for some of the rest of you too. Connie was a very active member of the Christchurch village community for very many years as we have already said. During her tenure as Church Warden, she was a stalwart during the church renovations in 1995, detailed in



The New Heron – 150th Anniversary edition in June. She regaled us with many tales of providing all the workers with tea and sandwiches everyday, along with other willing helpers. In her early years Christchurch still had its own village fire service. The

crew all being made up of villagers. There's a photo of one group below from the Connie Symons photographic archive, with thanks to Rodger and Carol, and Terry and Daphne for helping to ID some of the members.

When I visited Connie at Ashville House for the second time she was still up in her room along with two other visitors, Tom and Margaret Hankins. I was about to introduce myself when



Connie did the job for me and showed the Anniversary Issue to her two long term friends. It was great that they were there too, especially for Connie, as they were able to help dig out some of the memories from the various photographs I had taken in with me. She had no trouble at all identifying her own husband Sydney crouched down in the old strawberry field at Hillboro (below).



Connie had organized so many village events over the years including floats for the village Gala which became a yearly event. She was also heavily involved in amateur dramatics and produced many village plays. The picture on the opposite page (top) shows Connie in her heyday at



one of these events; decked out in all her costume regalia and finery! Looking very regal!

Connie was born in Sutton-St-James, to Fred and Grace Bowers, the 2nd eldest of 9 children – 8 girls and one boy, of which just her youngest sister June and her brother Arthur are still with us today. She married Sidney Symons and moved to Christchurch in the late 1930's where she spent her working life helping to run their smallholding. Sidney died in 1981. Connie had 2 children, Rodger and Pat; as well as being grandmother to Sally, Martin and Julia and great grandmother to Sophie, Isabelle, George and Alfie.

I count it a real privilege to have known Connie and I'm sure many villagers feel the same, and have many fond memories of past times together.

Sadly, Connie passed away at Ashville House on the evening of Friday 8th August, peacefully and in her sleep aged 96 years. She will be much missed for her happy outlook on life and endearing smile; always full of fun and a real people person. Having spoken with Rodger and Carol, her son and daughter-in-law, they agreed to let us publish this conclusion to Connie's story as a fitting memorial. We are sure that she will be smiling down on us from her throne on high. In the words of her favourite hymn: -

*"When Christ shall come with shouts of acclamation,  
And take me home - what joy shall fill my heart!"*

A funeral service was held at March Crematorium on 21st August, and a Memorial Service at Christchurch on Sunday 24th. Donations if desired for Progressive Supra-Nuclear Palsy Association (Motor Neurone Disease) should be sent via – A.R.Clingo (Independent Funeral Director) see Ad on page 27.



Connie Symons 1917– 2014

## Connie by Tricia (nee Rolfe)

We've gathered today to pay our respects  
To a great lady of this parish  
Connie Symons is her name  
A name we will always cherish

To me she was always Auntie Connie  
Although not strictly true  
But when you are only 3 years old  
It's the polite thing to do

Hard work has always been her motto  
Working hours on the land  
With Uncle Sid and Roger  
She was keen to lend a hand

In spring time it was the flowers  
That had to be picked and packed  
With many local workers  
Packing in little more than a shack

Strawberry time was busy  
She was always up at six  
To ensure the crop was in  
The Symons didn't miss a trick

She was a member of the WI  
For many, many years  
We've rehearsed many plays in her front room  
Bringing laughter and some tears

Aunt Connie loved playing bowls  
And involved herself with cricket  
Making sure teas and sandwiches were ready  
When someone got a wicket

Garden fetes and galas  
Flower arranging, games of whist  
All were part of her life  
Of which she will be missed

Church played an important part  
in Auntie Connie's life  
As churchwarden for a long long time  
She's seen trouble and some strife.

Finally as the years went by  
Failing health set in  
She had to leave her family home  
What a turmoil this must have been.

But new friendships were forged  
There was happiness and laughter  
In the care home at Downham Market  
Where she was well looked after

Sadly she has left us  
We will see her no more  
But we can still hear her familiar words  
"Come in love" close the door

To those who knew Auntie Connie  
This great lady of the Fen  
You will always be remembered  
In the village as a friend.

## Film Review

### The Best Exotic Marigold Hotel: Fox/Searchlight Pictures

This movie is an absolute joy to watch, being both hilarious at times and also moving. With the likes of Dame Judi Dench, Dame Maggie Smith (always a good pairing), Bill Nighy, Tom Wilkinson, Penelope Wilton, Ronald Pickup, Celia Imrie, and newcomer Dev Patel, how could it fail. It was definitely the 'feel good' film of the year in 2012 and a really joyous experience. If you missed it! Treat yourselves to 118 minutes of absolute pleasure in the Indian sun. An Indian summer for all I suspect.

Bound to appeal to us folks of a certain age, but even my step-daughter, who can be more than a little picky at 22, thoroughly enjoyed it; even laughing out loud at times. Even borrowed it to watch with her own friends. It really does appeal to all ages; though some of us might confess a certain insight.

An acclaimed cast lights up this witty, romantic comedy from the director of *Shakespeare in Love* – John Madden. When seven, cash-strapped, Brits journey to a retirement resort in India, friendship and romance blossom as they touch each others lives and hearts in the most unexpected of ways. In the end they will all discover that life, and love, can begin again when you embrace today and let go of the past. A lesson we could all do with learning. Don't you think!?



RWBG



Paul Braybrooke

***Oil Fired Boiler Engineer***

**Boiler Servicing & Breakdown Service**

Commissions  
Tank Replacements

Phone 01353 777788  
07946 735691



**Navraday's**  
**OF UPWELL**

GOOD FOOD - GOOD VALUE

Opening Hours

|                  |                                     |
|------------------|-------------------------------------|
| <b>Monday</b>    | Closed                              |
| <b>Tuesday</b>   | 4.00pm - 9.00pm                     |
| <b>Wednesday</b> | 4.00pm - 9.00pm                     |
| <b>Thursday</b>  | 4.00pm - 9.00pm                     |
| <b>Friday</b>    | 11.00am - 1.30pm<br>4.00pm - 9.00pm |
| <b>Saturday</b>  | 11.00am - 1.30pm<br>4.00pm - 9.00pm |
| <b>Sunday</b>    | Closed                              |

**10% Discount Given On All Telephone Orders Over £16**

**105 School Road, Upwell, Wisbech**  
**(01945) 772398**

## The Alan Russell Column



### A History of Euximoor Drove - Pt 3

There was a bus service that ran to Wisbech - No364 Eastern Counties from Christchurch calling at Iron Bridge and one to March on Wednesday and Saturday. If we wished to visit Gramma Edith's daughter, Aunt Dora Cromwell at Stowbridge, Grandad would have to take us in a horse and trap to Three Holes bus garage. From there we'd travel to Downham Market and then



Stonea box and station on 26 October 1911  
(Picture courtesy Mike Brooks collection)

we were met and taken to her home. We'd have to do the same if we wished to go to Ely or Cambridge; once in a blue moon we would be taken to Stonea, yes, a REAL station complete with ticket office and waiting room to catch the steam train. Incidentally ware potatoes for market, scotch seed for planting, fertilizer and sugar beet were handled there. Apart from visits to town on Market days, 4 or 5 different grocers would come round every week along with butchers, medical supplies 'something for the weekend sir', bakers and outfitters. A Mister Heffer from Wisbech came, you picked a pattern out, he measured you up and in due course a new suit, coat etc. would arrive to be paid for by cash on weekly terms.

At the end of the 'Chase' was a chocolate bar machine fixed to a large gate post, no doubt a relic of the times before the war as I never remember it working.

Happy Row had its own cobbler, a Mr. Rayner, and someone who sold sweets etc. Other carters would take your order and bring the goods next week. I remember Dad telling me of Nanny Webb a carter selling all sorts of goods by pony and trap. Apparently he used to stop at one house quite some time so Dad and some other teenagers unyoked the pony, put the shafts through a slatted fence and re-yoked the pony up the other side. I should imagine a few choice words were said.

(Part 4 next month)

## SANDRA & BARRY KAY

**Soft Furnishings, Curtains,  
Loose Covers, Bedspreads,  
Hard and Soft Pelmets**

**All hand made to order  
using your own fabrics  
Fitting Service**

**Tracks and Poles supplied**

**Conservatory, Roof Blinds  
Specialist**

**All types of Blinds fitted**

**Tel: Sandra 01354 638478  
Barry 07967 818364**

# Poultry Project Provides Pocket Money

by Lizzy Harvey-Hawes



**Local teens Katie and Joshua Ingram** own their own small business, keeping chickens. They both started out at a very young age (10 & 12) and have successfully kept it going since then. They have an egg run which delivers eggs around Christchurch, and have used eBay for a wider range of possible buyers of fertilised eggs for hatching.

I asked Katie when they first owned chickens, and how they came to buy them.

"Well, we began with six (costing £100 altogether) - Betty, Connie, Daisy, Doris, Mary and Peggy. They were all bought in 2009, aged 18 weeks and about to start laying."



Unfortunately, two died a few months later; one was eaten by a fox and the other died of natural causes. Thankfully two of the original six are still going strong, Connie and Doris still live at the Ingram's household and roam around happily with

the new comers.

"When we first thought about buying them we were on vacation in a little B&B. The garden where we were staying had many chickens, geese and a few sheep. When we were travelling home, Joshy and I were given the option - Go-Karting or chickens? ... Guess what we chose?"

We are now the owners of around 50 chickens - only two have names though!

Not long after buying the original six, Joshy began to incubate our own eggs. Seven of them hatched, four were Rhode Islands (two hens and two cockerels) and three were Silkie hens. The incubator was



homemade by Joshy himself (as were the huts and pens). We later sold a cockerel for £10.

After our first time selling eggs on eBay, we began breeding them. Our Silkies became broody (when a hen starts to sit on eggs - this usually lasts 21 days).

One of our first natural hatchings was by Doris, who hatched five chicks - one of which was disabled. The poor disabled hen died at night by falling off her perch after having a fit.

And this is when we started using eBay to sell fertilised eggs, whilst also doing an egg run around the village.

The prices for online selling are all different according to which egg is being sold, and who is selling them. We sell Silkie eggs for £10, and Rhode Islands for £9.20 (both including postage).

They are sent all over the country - from North Yorkshire to Kent, even into South Wales and islands like the Isle of Wight."

Katie and Joshy told me a few amusing stories, like the time when Mrs Ingram got to town and realised there was a chicken in the car, and the time when one of the cockerels got out and went to visit the pub!

## \*\*\* News Flash! \*\*\*

**Good news for dog owners.** A proposal has been put forward to the Parish Council for a Dog Park in view of the number of dog owners in Christchurch. This has been timetabled on the agenda of the next Parish Council meeting which will be held on Monday September 8th 7.30pm at the Bowls Pavilion.

Any interested Christchurch residents should either come along to the above meeting to express their views, or, contact one of the Parish Councillors listed in Useful Numbers on the back page.





# CHRISTCHURCH ELECTRICAL



**Simon Freeland Hill Farm 3 Church Road Christchurch PE14 9PQ**  
**Tel: 01354 638802 Mobile: 07727 046439**

- All domestic electrical installation work undertaken.
- No job is too small (Min ½ Hour Charge).
- Free quotations / estimates.
- Very reasonable rates with no VAT.
- References available throughout the parish.
- Part P Registered - Fully Insured - Government Approved.
- Six Year Warranty Offered.



[www.elecsa.co.uk](http://www.elecsa.co.uk)

[www.trustmark.org.uk](http://www.trustmark.org.uk)

Electrical Safety  
Register

incorporating



[www.electricalsafetyregister.com](http://www.electricalsafetyregister.com)

## P R PARKER

Established 1978

### General Building and Maintenance

CARPENTRY

PLUMBING

PLASTERING

BRICKLAYING

ROOFING

GLAZING

PAINTING

DECORATING

RENDERING

GUTTERING

01354 638380

## FREE ESTIMATES

**All Types - Houses - Flats - Shops - Offices**

# Christchurch Residents Association

## The following was put to the Parish Council at it's August Meeting:

At a meeting of Christchurch Residents Association held on 16<sup>th</sup> July 2014 at The Old School, Church Road, Christchurch the following items were discussed and a strategy agreed upon under the heading – “Make Christchurch Safe!”.

There are various issues relating to a required reduction in speed limits down Padgett's Road and its exit onto the 16 Foot Bank, Upwell Road and its exit onto the 16 Foot Bank at Jackson's Corner, and Euximoor Drove and its exit onto the 16 Foot Bank. We realize that we are unlikely to get a reduction to 30mph around these junctions, but a maximum of 40mph would seem appropriate. It is our opinion that these issues should be addressed collectively as it would be fatuous to exclude any of them from a proposal when they are in such close proximity, each one to the other and impinge upon the same stretch of the 16 Foot where it borders the village of Christchurch.

In addition to the above there is the issue of road signage which directs vehicles, including heavy goods vehicles, unnecessarily through the village. This issue was supposed to have been already under investigation, as an anomaly, with Cambridge County Council but has, so far, not been resolved. We as concerned Christchurch residents feel that this should be included within the above proposal to the Highways department under the same proposal heading of “Make Christchurch Safe!” Any suggestion that such vehicles all frequent the village shop would be at best misleading, though some may do so. However, we would be in agreement to signage showing the existence of the village shop and directing traffic to it should they actually want to make use of it; but all other signage should direct

traffic away from the centre of the village should it seek to access the 1101, and routes to Downham Market, Nordelph, Littleport, etc.

We earnestly request that Christchurch Parish Council put forward a ‘consolidated umbrella proposal’ to FDC/Highways/Cambridgeshire County Council, which takes account of all the above issues and concerns as addressed and agreed at the above meeting of Christchurch Residents Association.

Yours on behalf of CRA

Richard WB Guilford

## Response of the CPC meeting

Unfortunately it was pointed out at the August PC meeting that there were only funds of £10,000 available for any such a scheme and that, therefore, such an umbrella proposal, as detailed above, would be unlikely to be accepted. However, after much discussion of the above PC Chairman Nigel Russell suggested that such a scheme could be divided up between the Parish Council, Charlotte's Way Group, and County; each one funding a part of the proposal. He was to speak to Graham Chappell (CWG) about this, Fred Yeulett to check with County.

**NOTE** The next meeting of the CRA is Wed 10th Sept at the Old School 7:30pm

### \*\*\* News Flash 2! \*\*\*

**Our Household Recycling Service is under threat!** From Friday 15 Aug for six weeks until Friday 26 Sep. Cambridgeshire County Council is undertaking a consultation on residents views on the service. Options they are considering include closing some recycling centres, handing them over to Charities, or other organisations and reducing opening hours and charging for recycling!

As residents we need to take part in this consultation - it's only available online or at the recycling centres.

[www.cambridgeshire.gov.uk/recyclingcentreservice](http://www.cambridgeshire.gov.uk/recyclingcentreservice)

We'll put this link on the New Heron website so you can make your views known! Please do!

### 100 WAYS FOR A CHICKEN TO TRAIN ITS HUMAN ~ No 11 - Compost—Main Course

Remember that (No 10) was only your first course, so do not over indulge. Have another run round the garden to make room for your main course. You will find this on the compost heap - the fattest worms you could wish for. Your human will be happy that you are turning over the rotting matter and giving a new shape to their compost heap, even if you do happen to spread it all over the lawn.





**Minutes of the Monthly WI Meeting held in the dining room of Townley School on August 12th 2014**

Peggy welcomed members. Members stood for a minute's silence in remembrance of Connie Symons who had been a loyal member until recently.

**Apologies** were received from Margaret H., Anne A, Ann H, Beryl , Alma and Wendy

**Correspondence:**

Invitations from:

Acorn Club, Welney WI , Manea WI.

Peggy read out a letter of thanks for help with the Flower Festival from Margaret Sparrow.

**Other Matters**

October Meeting: As we do not have the facilities to invite other W.I.'s to our Harvest meeting, it was decided to have a games evening instead.

A WI information leaflet was approved for distribution to people who have recently moved into the village.'

A short discussion on ideas for next year's speakers was held.

**Speaker**

Our speaker, Linda Ingram, spoke about the work of FACET. It started in 2002 for adults with learning difficulties Today it holds 17 different training programmes over the week, including woodwork and horticulture. There are four shops in the local area and Linda displayed a selection of garden items made from wood, which are for sale in their local shop in March.

**Birthdays**

None

Next Month:

Cookery Demo Lorraine Davidson

**Competition**

6 Biscuits

**Raffle Prize Rota:**

Peggy, Wendy, Alma, Ann H.

**Competition Results:**

Collage using material scraps:

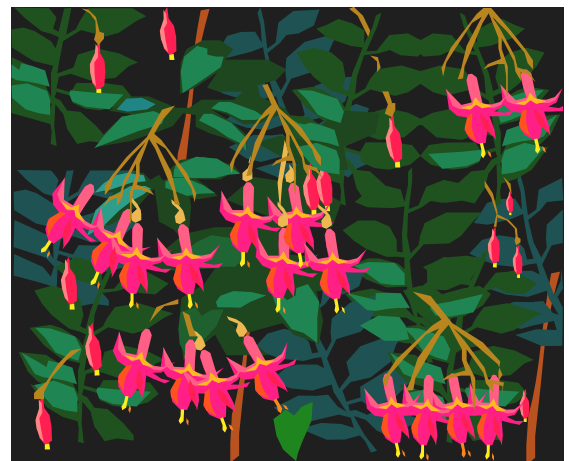
Val 5, Margaret S., 4, Tracy 3

Well!!!! Here we are August nearly gone.

This has been a strange year so far, we have had to accustom ourselves to our meetings in a limited space. Members have still enjoyed themselves and this month of course was very special. The Summer Buffet. The Committee and Members together turned up trumps. The limited space made sure we sat closer to each other at our tables for another sumptuous spread, lots of 'banter' and laughs made our buffet go with a swing.

We remembered Members who were unable to come and raised our glasses. This is the first time we have had to bring a plate/pudding dish and a spoon to enjoy our delights from the "Buffet spread", (*except those that forgot! – like me! Ed*). But Marion rallied round with the necessary *crocs!*), but we did have a knife and fork wrapped in a serviette. Thanks to Tracey for that and W.I. for the hire of cutlery etc.

As usual, our "Raffle table" was very popular, a few hats arrived, some with a tale to tell, but time didn't allow us to go through them all; so we'll pick up on that next month. Our Club evening Summer Buffet was very laid back some of us eating far too much with seconds, and thirds, but everything far too tempting thanks to the wonderful spread provided by our members. All in all another very successful Summer Buffet evening.



Now our next club meeting is at Townley School, 23<sup>rd</sup> September, 7pm Tim Jellis will talk to us about Fuchsia. If you have a problem plant bring it with you!

## Context of CRA enquiry to AWA

*Following discussions at the July meeting of CRA of various ongoing sewage issues in Christchurch and concerns that tabled future developments could make matters worse due to problems suffered by the sewage plant serving Tipps End and Christchurch.*

*Susan Bull - Planning and Liaison Manager for Anglian Water had agreed to give a full response by the end of the month. The CRA asked the New Heron to publish this:*

## The Anglia Water Response

Christchurch is served by Tipps End Water Recycling Centre that currently has capacity to accommodate further connections, this is taking into account those sites with planning consent that you kindly provided a list of that are still to connect. Tipps End is a relatively new centre and there were some remedial works carried out to ensure it was operating within our quality environmental consent. During this period there were likely to have been an increase in tankers to and from the centre. This has now been resolved.

The foul network should also have capacity to accept the additional flows. As I explained in our telephone conversation, we are not statutory consultees on planning applications and it is our aim to respond to major applications; that is ten or more

dwelling. So we will not have responded to the planning applications you have listed. We are obliged to accept the foul flows from development that has the benefit of planning consent.

There is a requirement under Section 106 of the Water Industry Act 1991 for developers to advise/give notice to the sewerage undertaker of the intention to connect. This includes providing detail of the method and point of connection that Anglian Water will consider to ensure there is not detriment to the public sewerage system

Christchurch is partially served by a vacuum sewerage system. Vacuum sewerage systems differ from conventional systems in that connections are only permitted to certain parts of the system, normally the vacuum pot itself. The number of connections allowed to each pot is limited and therefore we are required to carry out site investigations to determine a suitable point of connection, before the section 106 application is processed.

In some circumstances it may be necessary for Anglian Water to construct a new vacuum pot.

I hope this adequately responds to your queries.

Regards Sue Bull

Anglian Water Asset Management

### J. FURNESS PLASTERING

**Locally based plasterer**

**All aspects of plastering and  
decorating work carried out**

**Internal and external**

**FREE QUOTATIONS**

**Clean and reliable service**



**Please contact:**

**JOHN FURNESS**

**Home Number: 01354 638746**

**Work Number: 07709943445**

**Email: johnfurness@mail.com**

### Advertise in THE NEW HERON

Up to **15% SAVING** on block bookings

**FULL PAGE** - occasional inclusions  
by special arrangement

**HALF PAGE** - £11.50 per issue,  
6 issues £65 (saving £8),  
12 issues £120 (saving £18)

**QUARTER** - £5.75 per issue,  
6 issues £32 (saving £2.50),  
12 issues £60 (saving £9)

**BUSINESS CARD** (10<sup>th</sup> page) - £2.90 per issue,  
6 issues £16.50, 12 issues £30

**DOUBLE CARD** (5<sup>th</sup> page) - £5.20 per issue,  
6 issues £30, 12 issues £54

(You must provide your own artwork, but if  
necessary we can do it for you.  
Price on application)

**ALL ADS MUST BE RECEIVED AND PAID FOR BY  
25<sup>TH</sup> OF THE MONTH PRECEDING MONTH OF ISSUE**

Block booked ads can be changed, but any required  
changes must meet the above copy date.

Small personal ads - cost 10p per word

Tel: 01354 638990

Email [adverts@theheron.info](mailto:adverts@theheron.info)

It is the responsibility of advertisers to  
ensure their advert complies with  
Advertising Standards Authority Codes of Practice.

# CHRISTCHURCH PARISH COUNCIL

Minutes of a meeting of the Christchurch Parish Council on Monday 14<sup>th</sup> July 2014 in the Sports Pavilion, Christchurch

**Present** Cllrs: N Russell (Chair); W Beswick; J Bliss; S Freeland; R Gladwin; H Poole; W Poole; F Yeulett (CCC); W Sutton (FDC) J Richardson (Clerk); and 7 members of the public

**Apologies for Absence:** Cllr M Tanfield (FDC); PCSO Russ

**Declarations of Interest** Councillors to declare any interests under the Local Code of Conduct in respect of any item to be discussed at this meeting:-  
a) Disclosable Pecuniary Interest)  
b) Non-Pecuniary Interest ) N Russell (Item 056/14)  
c) Sensitive Pecuniary Interest ) W Poole & H Poole (Item 056/14)

## 19.32-19.40 Public Time

It was asked if the Parish Council benefit from the bottle bank re-cycling and this was confirmed as correct.

The Heron was thanked for the last edition.

Disappointment was expressed on the lack of comment following the Highways meeting re 30mph in Euximoor Drove. It was confirmed that this was discussed and it was asked if the Parish Council would consider supporting this issue.

## 043/14 Confirmation of Minutes

The minutes of the meeting held on 9<sup>th</sup> June 2014 were Proposed for approval by Cllr Russell, AGREED and signed

**Agreed**

The minutes of the Extra-Ordinary Meeting held on 23<sup>rd</sup> June 2014 were Proposed for approval by Cllr Russell, AGREED and signed

**Agreed**

## 044/14 Matters Arising

Reply sent to FDC re Planning Application F/YR14/0369/F. No objections raised.

## 045/14 Police Matters

One crime reported:-

Took place between 13/15 June criminal damage to a vehicle on Church Road

## 046/14 County Councillors Report

Cllr Yeulett reported not a lot has happened at County Council. Some monies may become available from Local Enterprise Partnership and some of this funding may come to this area. A47 improvement is now on the radar.

Cllr Sutton reported that the Welney Causeway improvement has been brought forward by a year.

Training is to be provided at Fenland District Council for Councillors to have a better understanding of the mechanism of planning applications under the new Local Plan.

Meeting has taken place with Highways regarding the Sixteen Foot Road. Research will now be undertaken.

## 047/14 Recreation Ground

a) The Football team have paid for the second half of the season £120. New padlocks and keys reimbursement of costs have been approved at £23.38

b) Play Park invoices have been paid. An inspection is due and it is thought to have taken place last week. It was AGREED to combine the opening of the Play Park with that of the new village hall.

c) Loss adjusters are to attend on Wed 16<sup>th</sup> July 2014, re ceiling damage in Pavilion Hall.

d) No further update on merger of Charities

e) Trees have been pruned on the Recreation Ground

|                                      |   |                              |               |         |                                      |           |        |         |               |         |  |                  |                 |                   |           |                  |          |                |           |                  |        |                |           |                |                    |          |
|--------------------------------------|---|------------------------------|---------------|---------|--------------------------------------|-----------|--------|---------|---------------|---------|--|------------------|-----------------|-------------------|-----------|------------------|----------|----------------|-----------|------------------|--------|----------------|-----------|----------------|--------------------|----------|
| 048/14                               | <b>Village Hall Committee</b><br>a) Village Hall Committee met on 23 <sup>rd</sup> June 2014. Plot 1 has been sold and piping of the drain and filling of the ditch has now been completed. Planning Application submitted 19 <sup>th</sup> June 2014, nothing more heard regarding the Rural Capital Grant.<br>b) Letter received from Morton & Hall regarding their costs for the construction of the footway on Upwell Road. The costs are:-<br>Ratcliffe's £650 (detailed survey of new footpath)<br>Morton & Hall £1200 (costs for drawings etc.)<br>These costs were Proposed by Cllr Russell and AGREED  | Agreed                       |               |         |                                      |           |        |         |               |         |  |                  |                 |                   |           |                  |          |                |           |                  |        |                |           |                |                    |          |
| 049/14                               | <b>Highways</b><br><b>a) Local Highways Improvement Initiative Bid 2015-2016.</b><br>Closing date for bids is 15 <sup>th</sup> September 2014. Traffic enforcement schemes will need to be discussed with the Police prior to submission. Possible schemes are:- Euximoor Drove (30mph), Sixteen Foot Junctions (Padgetts Road, Upwell Road) and Signage for transport through the village. Further schemes to be emailed to the Clerk ahead of the next meeting.<br><b>Street Lighting</b><br>a) The Category 1 lights should be identified later this month.<br>b) The street light on Green Lane that is not working may be a Category 1 light.  |                              |               |         |                                      |           |        |         |               |         |  |                  |                 |                   |           |                  |          |                |           |                  |        |                |           |                |                    |          |
| 050/14                               | <b>CAPALC Membership</b><br>The issue of the Parish Council paying for CAPALC Membership was discussed and it was AGREED not to take this up.   | Agreed                       |               |         |                                      |           |        |         |               |         |  |                  |                 |                   |           |                  |          |                |           |                  |        |                |           |                |                    |          |
| 051/14                               | <b>Income &amp; Expenditure</b><br><b>a)</b> Concurrent Functions Grant of £917.00 has been received<br><b>b)</b> Members considered and <b>APPROVED</b> the following accounts for payment: <table><tr><td>J Richardson</td><td>Clerks Salary</td><td>£298.01</td></tr><tr><td>Christchurch Village Resource Centre</td><td>The Heron</td><td>£80.00</td></tr><tr><td>E Mason</td><td>Grass Cutting</td><td>£720.00</td></tr><tr><td></td><td><b>SUB TOTAL</b></td><td><b>£1098.01</b></td></tr></table><br><b>c)</b> Clerk reported on the current bank balances at end June 2014:- <table><tr><td>Community Account</td><td>95,271.05</td></tr><tr><td>Business Premium</td><td>8,187.84</td></tr><tr><td>Business Bonus</td><td>27,528.25</td></tr><tr><td>New Village Hall</td><td>689.21</td></tr><tr><td>BoS Corp Bonus</td><td>10,689.99</td></tr><tr><td><b>TOTALS:</b></td><td><b>£142,366.34</b></td></tr></table><br>It was Proposed by Cllr Gladwin and AGREED that the Clerk should look to amalgamating the bank accounts and provide on line access<br><b>d)</b> Budget is as expected at present | J Richardson                 | Clerks Salary | £298.01 | Christchurch Village Resource Centre | The Heron | £80.00 | E Mason | Grass Cutting | £720.00 |  | <b>SUB TOTAL</b> | <b>£1098.01</b> | Community Account | 95,271.05 | Business Premium | 8,187.84 | Business Bonus | 27,528.25 | New Village Hall | 689.21 | BoS Corp Bonus | 10,689.99 | <b>TOTALS:</b> | <b>£142,366.34</b> | APPROVED |
| J Richardson                         | Clerks Salary   | £298.01                      |               |         |                                      |           |        |         |               |         |  |                  |                 |                   |           |                  |          |                |           |                  |        |                |           |                |                    |          |
| Christchurch Village Resource Centre | The Heron   | £80.00                       |               |         |                                      |           |        |         |               |         |  |                  |                 |                   |           |                  |          |                |           |                  |        |                |           |                |                    |          |
| E Mason                              | Grass Cutting   | £720.00                      |               |         |                                      |           |        |         |               |         |  |                  |                 |                   |           |                  |          |                |           |                  |        |                |           |                |                    |          |
|                                      | <b>SUB TOTAL</b>  | <b>£1098.01</b>              |               |         |                                      |           |        |         |               |         |  |                  |                 |                   |           |                  |          |                |           |                  |        |                |           |                |                    |          |
| Community Account                    | 95,271.05   |                              |               |         |                                      |           |        |         |               |         |  |                  |                 |                   |           |                  |          |                |           |                  |        |                |           |                |                    |          |
| Business Premium                     | 8,187.84  |                              |               |         |                                      |           |        |         |               |         |  |                  |                 |                   |           |                  |          |                |           |                  |        |                |           |                |                    |          |
| Business Bonus                       | 27,528.25   |                              |               |         |                                      |           |        |         |               |         |  |                  |                 |                   |           |                  |          |                |           |                  |        |                |           |                |                    |          |
| New Village Hall                     | 689.21  |                              |               |         |                                      |           |        |         |               |         |  |                  |                 |                   |           |                  |          |                |           |                  |        |                |           |                |                    |          |
| BoS Corp Bonus                       | 10,689.99   |                              |               |         |                                      |           |        |         |               |         |  |                  |                 |                   |           |                  |          |                |           |                  |        |                |           |                |                    |          |
| <b>TOTALS:</b>                       | <b>£142,366.34</b>  |                              |               |         |                                      |           |        |         |               |         |  |                  |                 |                   |           |                  |          |                |           |                  |        |                |           |                |                    |          |
|                                      |   | Agreed                       |               |         |                                      |           |        |         |               |         |  |                  |                 |                   |           |                  |          |                |           |                  |        |                |           |                |                    |          |
| 052/14                               | <b>Concurrent Functions Grant</b><br>Cllr Russell to attend another meeting on 21 <sup>st</sup> July 2014.  |                              |               |         |                                      |           |        |         |               |         |  |                  |                 |                   |           |                  |          |                |           |                  |        |                |           |                |                    |          |
| 053/14                               | <b>Planning/Development</b><br><b>a)</b> Rural Housing Policy questionnaire was discussed and the Clerk is to respond.<br><b>b)</b> A discussion took place regarding Parish Councils being able to sell electricity, this is to be supported by the Parish Council and the Clerk is to submit this.<br><b>c)</b> Fenland Street Trading Policy was discussed and it was AGREED that Christchurch did not want to designate any streets in the village  | Clerk<br><br>Clerk<br>Agreed |               |         |                                      |           |        |         |               |         |  |                  |                 |                   |           |                  |          |                |           |                  |        |                |           |                |                    |          |



054/14

**Correspondence**

- a) Rural Services Network bulletins (emailed 09/06/14 & 24/06/14 & 30/06/14 & 07/07/14)
- b) Launch of Ouse Washes Grant Scheme (emailed 09/16/14)
- c) Rural Opportunities Bulletin (emailed 09/06/14)
- d) Consultation on transport strategy in Cambridgeshire (emailed 09/06/14)
- e) Invitation to attend Commemoration Service (emailed 09/06/14)
- f) Fenland Secondary Education consultation (emailed 09/06/14)
- g) Rural Services Network, Fuel Poverty briefing (emailed 11/06/14)
- h) Police and Crime Commissioner letters, annual report (emailed 24/06/14)
- i) Statement of Community Involvement, CCC (emailed 24/06/14)
- j) Whittlesey Mayor Civic Dates change (emailed 24/06/14)
- k) Cambs Acre Newsletter (emailed 04/07/14)
- l) Letter from Parishioner re donations to The Herona) Rural Services Network bulletins (emailed 09/06/14 & 24/06/14 & 30/06/14 & 07/07/14)
- b) Launch of Ouse Washes Grant Scheme (emailed 09/16/14)
- c) Rural Opportunities Bulletin (emailed 09/06/14)
- d) Consultation on transport strategy in Cambridgeshire (emailed 09/06/14)
- e) Invitation to attend Commemoration Service (emailed 09/06/14)
- f) Fenland Secondary Education consultation (emailed 09/06/14)
- g) Rural Services Network, Fuel Poverty briefing (emailed 11/06/14)
- h) Police and Crime Commissioner letters, annual report (emailed 24/06/14)
- i) Statement of Community Involvement, CCC (emailed 24/06/14)
- j) Whittlesey Mayor Civic Dates change (emailed 24/06/14)
- k) Cambs Acre Newsletter (emailed 04/07/14)
- l) Letter from Parishioner re donations to The Heron

055/14

**Donations/Grants 2014/15**

Cllr Sutton reported that there are no 106 monies that can be used to help fund the new school swimming pool. It was Proposed by Cllr Russell and AGREED that the Parish Council will look at this again if the target is not reached.

**Agreed**

**Cllr N Russell left the room and Cllr H Poole took the chair**

056/14

**Allotments**

The owners are keen to sell the land with vacant possession and have intimated that they do not expect the Parish Council to vacate the Poole Field with no payment.

Cllr W Poole is to ask the landowners to write to the Parish Council with an offer.

**Cllr W Poole**

**Cllr N Russell returned and took the chair**

057/14

**Agenda Items/Next Meeting**

The date of the next Parish Council Meeting will be Monday 11 August 2014. Items to be included on the agenda should be with the Clerk by Monday 4 August 2014.

**ALL  
COUNCILLORS**

Toll Road drain water is standing after the gully cleansing

Pavement collapsing outside Brimstone Cottage on Church Road

Pavement eroding opposite 40 Church Road

Scotts Road potholes

Green Lane potholes before Hole in Wall Farm

Meeting Closed at 8.55pm

**YOUR VOTE MATTERS**

**MAKE SURE YOU'RE IN**



## IMPORTANT NOTICE

### The way we all register to vote is changing

The way you register to vote is changing across the UK. In Fenland around 7000 residents may need to take action to join the new register, even if they were registered in the past.

We have written to local residents to tell them about the change. If you received a letter inviting you to register, it's important you respond so that you can have your say in future elections and referendums.

### About the change

The registration system changed in June 2014. The new system is called 'Individual Electoral Registration'. Previously, the 'head of household' was responsible for registering everyone who lived at an address, but now every individual is

responsible for their own voter registration. The new system means that for the first time people are now able to register online. To register, you will need to provide a few more details, including your National Insurance number and date of birth. This helps make the electoral register more secure.

Most people who are already registered have been transferred automatically to the new register. However around 7000 will need to re-register in the Fenland area. There are also people in the area who are not registered to vote at all and so need to register to have their say in elections. If you weren't registered previously, you can register under the new system at [www.gov.uk/yourvotematters](http://www.gov.uk/yourvotematters).

This is the biggest change to the voter registration system in 100 years. To find out more, visit [www.gov.uk/yourvotematters](http://www.gov.uk/yourvotematters)



### BRESSINGHAM STEAM & GARDENS

**WEDNESDAY 10th SEPT 2014**



Bressingham Gardens with nearly 20 acres of gardens & 8,000 species, perfect for enjoying the scenery. Take a trip on one of the railways, through the gardens & woodland. Visit the loco sheds to see engineering up close. See the Dad's Army collection - wander through Walmington-on-Sea looking at original props and vehicles.  
£25.00 per person  
(entrance fee and transport)

## DAY TRIPS

Tel: 01354 661234 for bookings

See May's  
New Heron for  
registration form  
and other details

### WESTFIELDS SHOPPING CENTRE STRATFORD

**THURSDAY 27th NOV 2014**

With 250 shops plus 70 places to dine, Westfield Stratford City is the largest shopping mall in Europe. Part of one of the largest urban regeneration projects ever undertaken in the UK, Westfield Stratford City also offers spectacular views of the Olympic Park.



£17.50 per person  
(transport)

### MEADOWHALL SHOPPING CENTRE

**THURSDAY 11th DEC 2014**



Meadowhall offers something for everyone. Shop the latest high street and designer fashions, and let the 280 stores inspire your gift ideas. You will be spoilt for choice when it comes to dining from Thai and Japanese to Italian, American and good old British!

£17.50 per person  
(transport)

PLEASE COME ALONG AND SUPPORT THIS FUNDRAISER

NEW  
The Heron

**Presents**

# Heron Aid



**an evening of music of various styles  
from JAZZ to FOLK, STANDARDS and  
some good old ROCK & ROLL  
with**

**STEVE & RICHIE  
WAYE THORN**

**Tickets £5.00**

**from The Little Local or on the Door  
or from the Dun Cow**

**Saturday Sept 20th 7.00pm  
Townley School Hall**

Interval Food Available - proceeds to Friends of Townley - Swimming Pool Appeal  
Jacket potatoes, various fillings, cake, coffee, tea and other drinks



## BRIAN TWEED & SON LTD

Family Butcher  
Town Street, Upwell.

**Tel: 01945 773248**

Fresh beef, pork, lamb and poultry.  
Our specialities are home made  
sausages and burgers.  
Home cooked ham, roast beef,  
roast pork and haslets.



## LOGS FOR SALE

One cubic metre of seasoned  
firewood, split and cut with  
FREE local delivery

**only: £70**

Call David: 07714 098943

[www.willockfarm.co.uk](http://www.willockfarm.co.uk)

Grass topping, weeds, reeds  
any rough ground topped  
with tractor and 6ft toppler  
also log splitting and cutting  
**call Chris on 01354638126**



**PETER SCOTT**

Wrought iron gates, railings, hanging basket brackets,  
weather vanes, rose arches, gazebos, garden furniture, etc.  
Commissions accepted to customers requirements.

Willow Farm, Sixteen Foot Bank, Christchurch, PE14 9NN

Tel: 01354 638227 Mob: 07989668095 Email: [pnscott@hotmail.co.uk](mailto:pnscott@hotmail.co.uk)

## A JONES & SON

**TELEVISION SALES/REPAIRS/INSTALLATION**

FREE LOCAL DELIVERY  
FIRST CLASS AERIAL INSTALLATIONS/ADDITIONAL POINTS

26 March Road, Wimblington, March, Cambs PE15 0RN

Tel: 01354 740320

CLOSED ALL DAY TUESDAYS



**Virus Removal - Upgrades - System Service -  
New Machine setups - Wireless setups -  
Printer setups - Call out repairs**

Phone - 01945 772717/07849 778525

E-mail - [upwellcomputerrepairs@gmail.com](mailto:upwellcomputerrepairs@gmail.com)



## Golding Feeds & Nursery Ltd

For all of your Pet, Animal & Garden Requirements

Hall Road, Outwell

Wisbech, Cambs. PE14 8PE

**Open 7 days a week: Mon - Fri 8am - 6pm**

**Sat 8am - 5pm**

**Sun 9am - 2pm**

Tel: 01945 772802

Mobile: 07768 397626

Fax: 01945 773159



email: [taglodge@aol.com](mailto:taglodge@aol.com)

[www.goldingfeedsandnurseryltd.com](http://www.goldingfeedsandnurseryltd.com)

## S & H

Painters and decorators

**Steven Horne**

Christchurch, Cambridgeshire

Tel: 01354 638124

Mobile: 07905145680



## J. Mallett Carpentry

All types of carpentry work undertaken including  
doors, laminate flooring, kitchens.

Contact Jonathan Mallett

t. 01354 638656

m. 07581 368725

[jmallettcarpentry@hotmail.co.uk](mailto:jmallettcarpentry@hotmail.co.uk)



[www.facebook.com/jmallettcarpentry](http://www.facebook.com/jmallettcarpentry)

[www.tackk.com/jmallettcarpentry](http://www.tackk.com/jmallettcarpentry)



# TOWNLEY SCHOOL

Christchurch, Wisbech, Cambs. PE14 9NA

Email: [office@townley.cambs.sch.uk](mailto:office@townley.cambs.sch.uk)

Website: [www.townleyschool.org.uk](http://www.townleyschool.org.uk)

Tel/Fax: 01354 638229



Pre-school and Class 1 enjoyed their annual teddy bear's picnic. The children shared their packed lunches with their favourite bears before playing on the trim trail, in the big sand pit and on the climbing frame. The children and teddies also enjoyed joining in with one of their favourite stories, 'We're going on a bear hunt'. A super time was had by all!

## Term Dates

2014

*Professional Day (no children)*

*Wed 3rd Sept*

*Autumn Term opens Thurs 4th Sept*

*Professional Day (no children)*

*Fri 24th Oct*

*Half-term 27th Oct – 31st Oct*

*Autumn Term Closes Fri 19th Dec*

2015

*Professional Day (no children)*

*Mon 5th Jan*

*Spring Term Opens Tues 6th Jan*

*Half-term 16th – 20th February*

*Spring Term Closes Fri 27th March*

*Professional Day (no children)*

*Mon 13th April*

*Summer Term Opens Tuesday 14th April*

*May Day Mon 4th May*

*Half-term 25th – 29th May*

*Summer Term Closes Tues 21st July*

*Professional Day (no children)*

*Wed 22nd July*



There are lots more photos and information about what our school has been up to on our website.

## Pilates for All



I recently moved into Christchurch village, and one way of getting to meet local people, was through joining the local Pilates class at Townley School.

Classes are from 6:30 to 7:30 every Tuesday evening and I have now been going since March.

Pilates is an exercise system that focuses on stretching and strengthening the whole body, to improve balance, muscle strength, flexibility and posture. It was created by German born Joseph Pilates in the early 1900's, hence the name.

It is suitable for people of all ages. It's never too late to start, you'll be surprised at what you can achieve. All you need is suitable clothing i.e.

leggings and tee shirt, and a mat to lay on.

Autumn is a good time to start, as we are all a little rusty after the summer break.

Our teacher, Marina, is very experienced and friendly, as are Vivien, Paul, Jane, Sandra, to name just a few people I have met since joining.

Anyone trying to decide whether to join or not, please give it a go. The cost is £5 per session paid on a monthly basis.

Look forward to seeing you soon.

Keep fit and make friends!

Anne Atkinson.

# CROSSWORD

No prizes again this month but try this one just for fun. Solution next month as usual.

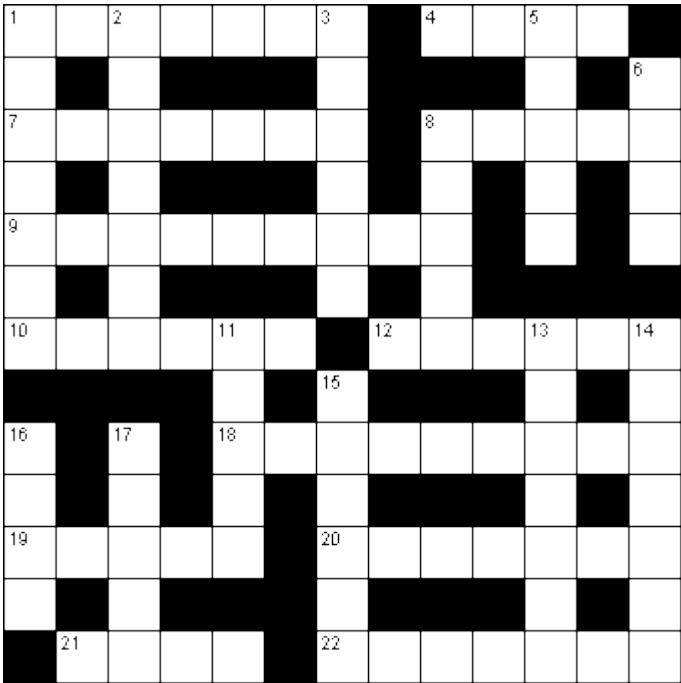
The theme this month is Travel

Across

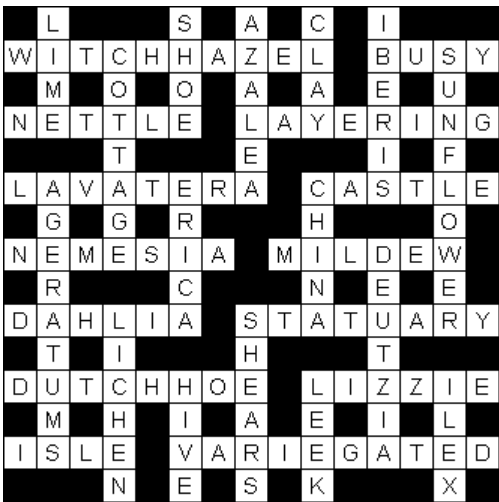
- 1. Hamilton is the capital of this Atlantic island group (7)
- 4. Continent (4)
- 7. African river, aka Crocodile River (7)
- 8. South American mountain range (5)
- 9. Caracas is the capital (9)
- 10. America's largest state (6)
- 12. Island, southern Indonesia, east of Bali (6)
- 18. Biblical town, near Jerusalem (9)
- 19. Located in 9 Across, \_\_\_ Falls (5)
- 20. Montgomery is the state capital (7)
- 21. Tehran is the capital (4)
- 22. Tirana is the capital (7)

Down

- 1. Country in central South America (7)
- 2. Bucharest is the capital (7)
- 3. Group of Portuguese islands in the Atlantic Ocean (6)
- 5. Asian river, flows from Tibet to the Arabian Sea (5)
- 6. Capital of Norway (4)
- 8. Historic San Antonio mission (5)
- 11. Capital of Afghanistan (5)
- 13. Manama is the capital (7)
- 14. Capital of Uganda (7)
- 15. Capital of Canada (6)
- 16. Muscat is the capital (4)
- 17. Mountain peak in the Bernese Alps, notorious for its North Face (5)



Last Month's Solution



## The Dun Cow

Green Lane, Christchurch, FE14 9PG

Weekdays open from 5.00 pm  
Fri, Sat & Sun open from 12.00 noon  
Sunday Lunches ~ 12.00 – 2.30

Thursdays - Steak Night - from 4th Sept

Bookings - 01354 638323 - Bookings



\*\*\*\*\*  
\* There will be a McMillan Coffee Morning in the Parish Church Sept 26th 10-12am \*  
\* Please come and support this wonderful work \*  
\*\*\*\*\*



# A.R. CLINGO

## FUNERAL DIRECTOR

Family Independant  
Business

Private Chapel of Rest  
Personal Attention

### 24 Hour Service

*Full estimates given at all times*

Golden Charter  
Funeral Plans



Pinfold House  
St. Peter's Road  
Upwell, Wisbech  
Phone 01945 772502

## March Stationery & Print

### A1 POSTER PRINTS

*on gloss  
only £8.00*

*On production of this advert  
(artwork not included)*

Leaflets • Newsletters  
Business Cards • Photo Printing  
Plan Copying • Video Copying  
DVD/CD Duplication

### 01354 656614

sales@marchsp.co.uk  
5 Fenland Walk, March, PE15 8TW



**CHERRY TREE  
RECORDING STUDIO**

### Jed Wild

Cherry Tree Farm  
Euximoor Drive, Christchurch  
Wisbech PE14 9LT  
01354 638326

cherrytreerecordingstudio@live.com  
www.cherrytreerecordingstudio.com

*Find us on Facebook, Twitter & YouTube*

## "NEW HERON MERCHANDISE"

CD with collection of photos from events such as Garden Club,  
Dog Show and Festival of Flowers etc. - £5.00 each

Film DVD of church renovations, celebration service and BBQ - £5.00

HERON AID T-SHIRTS (pre-order only) - £25 each

Back copies of The New Heron are available at £1.00 each

01354 638990

# Useful Telephone Numbers

|   |                   |
|---|-------------------|
| Age UK Cambridgeshire                                 | 0300 6669860      |
| Alzheimer's Society (Fenland)                         | 01945 580480      |
| Anglian Water – Susan Bull                            | 08457 145 145 101 |
| Cambs Fire & Rescue                                   | 01480 444500      |
| Churchwarden - Mrs. D. Symons                         | 01354 638352      |
| Citizens' Advice Bureau, Wisbech                      | 01945 464367      |
| Community Car Scheme (to book a journey)              | 07902 316360      |
| Community Fire Safety Officer - Howard Newton         | 07717858166       |
| County Councillor - Fred Yeulett                      | 01354 653763      |
| District Councillor - Will Sutton                     | 01354 638025      |
| Eastern Electricity                                   | 0800 783 8838     |
| Fenland Association of Community Transport (FACT)     | 01354 661234      |
| Fenland District Council                              | 01354 654321      |
| Fire Station - March                                  | 01354 652349      |
| Floodline   | 0845 988 1188     |
| Library - March                                       | 0354 0455225      |
| National Debtline                                     | 0808 808 4000     |
| Neighbourhood Watch                                   | 01354 638990      |
| Parish Clerk - Jackie Richardson                      | 01354 677856      |
| Parish Councillor - Jill Bliss                        | 01354 638343      |
| Parish Councillor - William Beswick                   | 01354 638758      |
| Parish Councillor - Simon Freeland                    | 01354 638802      |
| Parish Councillor - Roger Gladwin                     | 01354 638583      |
| Parish Councillor - Hannah Poole                      | 01354 638622      |
| Parish Councillor - Wesley Poole                      | 01354 638622      |
| Parish Councillor - Nigel Russell (Chair)             | 01354 638279      |
| Police Community Support Officer - Dave Russ (mobile) | 07921 094813      |
| Police (non-emergency)                                | 101               |
| Rector - Rev'd Kevin Fitzgibbon                       | 01354 680969      |
| Telephone Complaints                                  | 0345 145000       |
| Townley School  | 01354 638229      |
| Trading Standards                                     | 845040506         |
| Train Information                                     | 08457 484950      |
| Upwell Health Centre (and out of hours)               | 01945 773671      |
| Water Emergencies                                     | 08457 145145      |
| Welle Pharmacy, Upwell Health Centre                  | 01945 774081      |

Any views expressed in The New Heron do not necessarily reflect the views of  
The New Heron Editorial Team.

The team aim to provide a balanced view of village opinions where such views are expressed.  
We reserve the right to edit any submissions where we feel this is appropriate.