

The Heron

Community Magazine

May 2021

Delivered to homes in Christchurch, Euximoor and Tipps End

No. 85

In this issue!

Townley School	2
Your Letters	3
Calling all small businesses	3
Editorial/Heron News	5
Plant Sale	6
Homographs	7
Oh Gno!/Ouse Washes	8
Littleport in the News!	9
Kids Corner	10
Village Vandalism	11
Who loves music?	12
Christian Aid Week	13
Hungry?/How observant?	14
May Day	15
A Year on the Farm	16
Parish Council Snippets	16
Rural Bulletin	17
Spring Sudoku/Chess	20
Meet a Parish Councillor	22
UFO?	22
Church News/Pentecost	23
Thoughts from the Rectory	23
Duke of Edinburgh's Award	24
Useful Numbers	26
The Fen View Story - Part I	27
FA Cup Final Quiz	28

The blossom is out and
Spring is in the air but ...

... can someone
tell the weather!



Remember!

**Wear a mask and take your own
pen with you when you vote on
Thursday 6 May!**



EDITORIAL TEAM:

Editorial Team Leader - Annie Nason

Treasurer & Ad. Manager - Elaine Reed-Hughes

Editorial Team Members: Sue Norman, Sheila Day, Peggy Warby, Sandra Kay

Support—Lewis Bennett (IT), Sandra Lloyd, the Delivery Team and Publishers

ENQUIRIES

editor@theheron.info Tel: 01354 638088

adverts@theheron.info Tel: 01354 638310

Website: www.theheron.info





TOWNLEY SCHOOL AND PRE-SCHOOL

Christchurch, Wisbech, Cambs. PE14 9NA
office@townley.cambs.sch.uk
Website: www.townley.cambs.sch.uk
01354 638229



Facebook—Townley School
and Pre-School

May 2021

I feel so proud that our school is at the heart of our community and am extremely grateful to all of you for supporting us. Over the Easter holidays, Cody, a student at Littleport and East Cambridgeshire Academy who lives locally undertook the volunteering section, of his Duke of Edinburgh Award at our school. He has given our front garden a much needed make over – see photo below! Not only did he give up his own time, he also sourced donations of materials, plants and money for the makeover. I must say we are delighted, and EYFS in particular have enjoyed their new garden this week!



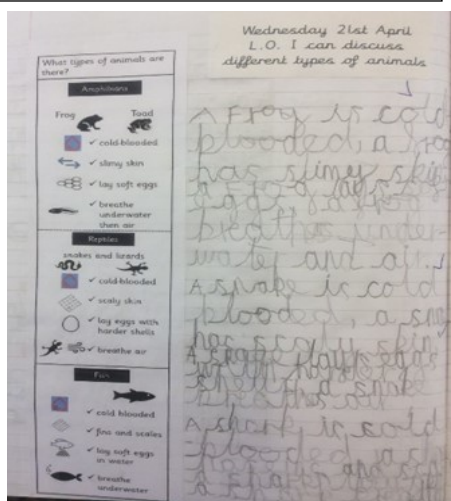
Thank you to everyone who have kindly donated soil, seeds, propagators and so on to the Year 5/6 allotment. A special thank you must go to a villager (anon) who went to the garden centre especially to buy us bags of compost, we are very grateful and will keep you posted during the growing season. If you have any hand tools, you no longer need, we would be grateful for donations.

Also, thank you to Kelly and Lucy from Tesco's in March, who have donated a ton (pretty much literally!) of flour and some toys. We intend to sent every child home with a bag of flour next week for baking or messy play and still have plenty left for our own use!

We have discovered Mrs Blakeway-Long, doesn't just play piano – she can also play the recorder. Therefore, she is now teaching the children! I might suggest avoiding visiting at 1pm on Fridays, but do I hope Year 1 will soon sound amazing!



We have recently purchased a new resource to support teaching and learning in science, history and geography. This is an exciting new addition to our teaching resources and the staff had their first training session on the theory behind the package. Hawker Class, have tested the science resources this week for their unit on *animals*, including humans and both teaching staff and the children have been impressed. For each lesson, the children are provided with a high-quality “knowledge note” which contains the information they need. This reduces the *extraneous cognitive load*, as well as the *split-attention effect*, and allows children to focus on the actual science. The “knowledge notes” also provide support for those children that struggle with writing, as well as providing additional challenge for those children that need it. EYFS have continued to explore their environment, both inside and outside, and are thinking like scientists. In Emerald Class, children will be learning about *states of matter*, which will include looking at the water cycle. Finally, in Emperor Class children have been getting their hands dirty! They have been working hard planting in the outdoor area at the front of the school for their “allotment” and learning about the solar system.



Remember that our website has lots more information about school.

Community Information

Mobile Post Office:

Visits Monday to Thursday in the lay-by on Upwell Road

Monday and Thursday - 16.30 to 17:00

Tuesday and Wednesday - 16.10 to 17:00

Fridays - no service.

ANYONE WISHING THEIR ITEMS TO BE POSTED,
ON THE DAY, WILL NEED TO GET THEIR POST TO THE
VAN BY 4.40PM - WHICH IS WHEN IT IS COLLECTED.

Use it or lose it!

Community Car Scheme:

This scheme is still running for Christchurch and surrounding villages. To book a ride or to become a volunteer driver please ring 07902 316360. An additional driver is still required for the scheme. For more information please ring the number above.

Mobile Library:

**OUR MOBILE LIBRARY COMES ONCE A MONTH,
ON THE FIRST TUESDAY, AT 12 NOON.**

The van parks in the lay-by on Upwell Road, opposite to the entrance of Fen View. **USE IT OR LOSE IT?**
The next visit is April 6th.

You can use the Select and Collect service online, or by calling 0345 045 5225.

https://cambridgeshire-self.achieveservice.com/service/Select_and_Collect

Please support your local Library Service, right in the heart of your community.

Your Letters

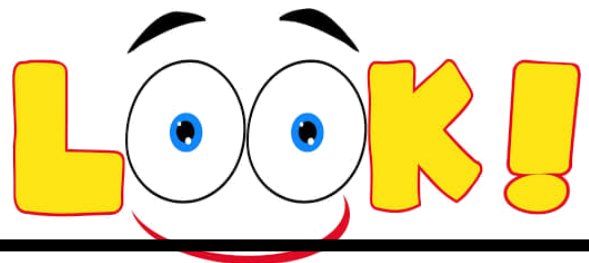
THANK YOU

A massive thank you to Marion Hawthorn who, after many years of being one of our faithful deliverers, is retiring from the job. We want her to know that we are grateful for all that she has done for The Heron over the years but appreciate that it's time for her to hang up her delivery bag and take it easy!

Thanks again Marion, from all at The Heron.



Please remember that no dogs are allowed on the playing field. Thank you. Your co-operation is much appreciated.



CALLING ALL SMALL BUSINESSES IN CHRISTCHURCH AND SURROUNDING AREAS

As part of our continuing effort to promote and encourage small businesses in the village (and surrounding areas) we would like to offer a 3 month special feature promotion of any small businesses in the area. Your business card sized advert (8th of a page) will appear on a designated "Small Businesses" page, in our publication, for 3 months, for a fixed price (**for those 3 months only**) of £12. If you would like to continue advertising in the Heron, it will be £34 for 6 months or £64 for 12 months for the same sized advert (other sizes are available - please see page 4 for sizes and prices).

We hope you will take us up on our offer and take advantage of having your small business featured in our June, July, and August editions this year.

Please contact adverts@theheron.info or call Elaine on 01354 638310 if you would like to advertise. We look forward to hearing from you.

THANK YOU

I would like to say a big thank you - I feel so lucky to have so many wonderful friends and family who sent me cards, gave flowers, presents and wishes to celebrate my 80th Birthday.

Peggy Warby



Please be sure to cut the strings before disposing of your masks. And then put them in the bin!

Would you like to advertise in the Heron? Here are our prices for 2021:

Full Page (27.7cm High x 19cm Wide)
(occasional inclusion by special arrangement)

Half Page (14cm High x 19cm Wide)
6 x issues £85
12 x issues £160

Quarter Page (14cm High x 9.5cm Wide)
6 x issues £50
12 x issues £90

Eighth Page (6.5cm High x 9.5cm Wide)
6 x issues £34
12 x issues £64

Please contact adverts@theheron.info or phone Elaine on 01354 638310.

As most small businesses are struggling under the current, uncertain climate, we have decided to leave our prices as they are at the present time.

Outwell Timber

For all your Timber and Building Supplies

ISLE ROAD, OUTWELL
PE14 8TD
Tel: 01945 77 21 16

FENCING, PANELS, TRELLIS
TIMBER, PLYWOOD, DECKING

SAND, BALLAST, GRAVEL

SCREWS, NAILS, BOLTS

PAINT, SILICONE, HAND TOOLS

LOCKS, ELECTRICALS, PLUMBING,
GUTTERING
UNDERGROUND PIPE & FITTINGS

CEMENT, MULTIFINISH, PLASTERBOARD

A JONES & SON

TELEVISION SALES/REPAIRS/INSTALLATION

FREE LOCAL DELIVERY
FIRST CLASS AERIAL INSTALLATIONS/ADDITIONAL POINTS

26 March Road, Wimblington, March, Cambs PE15 0RN

Tel: 01354 740320
CLOSED ALL DAY TUESDAYS



Connie's
Care Services

01945 774250 - 07887 563106

www.connies-care.net connie@connies-care.net
Personal Care - Social Care - End Of Life Care - Cleaning -
Dementia Care - Shopping—Sits - Over 65's Care

Advertisers - all our advert rates and conditions can be found on our website www.theheron.info. Business advertisers can book series of 6 or 12 adverts, paid in advance. Adverts for village fundraising events, personal announcements, or small private ads are usually free.

BANK BACS DETAILS: Sort Code: 53-81-42 Account no: 04140109 - *Heron Publishing*

Copy Deadline - The deadline for copy for the **June** edition of the Heron is **23 May 2021**.

At the time of going to press, all information is as accurate and up to date as we can make it. Changes and updates may be published subsequently. All information contributed by outside agencies, including dates etc., will be assumed to be correct.

NB as a matter of courtesy no content from the Heron should be used without prior permission.

The Heron Christchurch Calendar 2022 -

"Nature and Nurture in our corner of The Fens".

The Heron Christchurch Calendar for 2021 - "Christchurch Skies" was a great success, we all have to agree. Well done to everyone! In response to a number of requests for us to do it again, we are now launching our Heron Calendar 2022 Competition. Have your cameras ready!

The format will be a different one, with one photograph per month. Rex Okenden has agreed to be our judge once again. Thank you, Rex. You did a great job last time. Photos will be accepted early in the Autumn, so save your best ones for entry into the competition.

The theme is also a little different. "Nature and Nurture in our corner of the Fens". This theme is nice and broad and can take in all sorts of pictures – wild life, animals, pets, flowers, trees, gardens, farming.... and yes, skies too! We hope you will like it and get snapping.



We have been really fortunate to have been gifted some quite substantial donations so far this year. All donors have asked to remain anonymous but we, at the Heron, would like to say a HUGE thank you to those people who think our magazine is worthy of such a generous gift.

THANK YOU!

Elaine Reed-Hughes, Treasurer
Treasurer

Editorial

Well what a month we've had! If someone can explain what on earth the weather is doing at the moment, I would be grateful ... You don't know what to wear for a start! Baking hot one minute - Baltic the next!!

Hands up those that were "fooled" by last month's front cover?? We did have a few people questioning it - wondering if we had missed off a few pages!! We thought that the phone model (which doesn't have a camera at all) and the dodgy page number might have given it away! Sorry!!

Following the sad news about the passing of HRH The Prince Philip, this month we've got some lovely stories from people who have been involved in the Duke of Edinburgh's Award scheme at some stage in their lives.

There is a lovely piece this month about the history of May Day and also Part 1 of a really interesting story about Fen View ... before it was Fen View!

One of our villagers, Sandra Kay, is having a Plant Sale at the Dun Cow on Saturday 8th May with all proceeds going to MIND. A charity which is desperately close to her heart. We hope you are able to go along and support this wonderful charity that continues to do great work.

Talking about the Dun Cow - it is so great to finally see it open again (albeit serving drinks outside). Check out their advert for some developments on the return of Breakfasts! I know there are a lot of people out there that have really missed those!

With the continuing vaccine figures escalating, here's hoping that we are now on the home straight and can look forward to seeing the start of Christchurch waking up from it's unscheduled sleep and getting back to a new normal, ready for the Summer.

Elaine Reed-Hughes

Letters to the Editorial Team

The Editorial team welcome letters from its readers. Please email letters to: editor@heron.info or post them to *The Editor of The Heron, Grasshopper Cottage, 5 Upwell Road, Christchurch, PE14 9LF.*

PLEASE NOTE: Letters will only be considered for publication if they are accompanied by name and contact details - names will be published, but not contact details. The Heron will not share any contact details unless given permission.

The team look forward to hearing from you!



Qualified Seamstress

All dressmaking and sewing jobs undertaken. Alterations to clothing and curtains.

***Please contact: Sandra Kay
on 01354 638478***

P R PARKER

Established 1978

General Building and Maintenance

CARPENTRY	REFURBISHMENT	GLAZING
PLUMBING	AND	PAINTING
PLASTERING	RENOVATION	DECORATING
BRICKLAYING		RENDERING
ROOFING	01354 638380	GUTTERING

FREE ESTIMATES

All Types - Houses - Flats - Shops - Offices

Plant Sale for the charity MIND

In memory of Sean Kay.

Saturday 8th May - 11am-4pm
At the Dun Cow, Christchurch.



Tea/drinks available
at the Pub.

With thanks to Paul
and Sue Simpson.

You 'May' want to pass by these Homographs and Heteronyms in the May edition of the Heron!

Homographs are words of like spelling but with more than one meaning.

A homograph that is also pronounced differently is a heteronym. You think English is easy? I think a retired English teacher was bored...These are great!

1. The bandage was wound around the wound.
 2. The farm used to produce produce.
 3. The dump was so full that it had to refuse more refuse.
 4. We must polish the Polish furniture.
 5. His job was to lead the tourists out of the lead mine.
 6. The soldier decided to desert his dessert in the desert.
 7. Since there is no time like the present, he thought it was time to present the present.
 8. A bass was painted on the head of the bass drum.
 9. When shot at, the dove, dove into the bushes.
- (American English)*
10. I did not object to the object.
 11. The insurance was invalid for the invalid.
 12. There was a row among the oarsmen about how to row.
 13. They were too close to the door to close it.
 14. The buck does funny things when the does are present.
 15. The sewer had to stop sewing to call someone to unblock the sewer.
 16. To help with planting, the farmer taught his sow to sow.
 17. The wind was too strong to wind the sail.
 18. Upon seeing the tear in the painting I shed a tear.
 19. I had to subject the subject to a series of tests.
 20. How can I intimate this to my most intimate friend?



Granary Studio

Your local picture framer

01354 638614

The Granary
Hall Farm, Upwell Road
Christchurch Cambs PE14 9LJ



645 Services Ltd

For your complete Oil Services

Registered Office: 12/13 The Crescent, Wisbech, Cambs PE13 1EH – Director: B E Easey
Company Registration Number: 07872493 ~ VAT Number: 126 5422 30

For a competitive oil quote, for delivery in the village and surrounding area, (Outwell, Upwell, Tipps End, Welney) please call 645 Services' local Representative, Elaine, on 01354 638310 or 07803 178824 or Email: elaine@645services.co.uk

We will always try and be the best price around - with local deliveries scheduled for most weeks throughout the month.

Like most people across the world at present, we are all wondering when, and indeed if, we will get back to whatever our normal may be. The members of the Gardening Club are no different. February 2020 gave us no inkling about what was to follow; we met as usual for our AGM, with members re-joining and Committee elections. Our Secretary Marion had a full calendar arranged for our regular monthly meetings and that pretty much, was where normal came to an abrupt halt.

Christchurch Gardening Club



The Club meets on the third Tuesday of every month at the Community Centre where, as well as catching up with friends and swapping stories and advice about gardening, we play host to a visiting expert, usually to do with horticulture, who will deliver a talk concerning their field of expertise. There really is a lot to learn and even our knowledgeable bunch can glean tips, advice and inside knowledge from the gardening professionals who are more than happy to share their invaluable insights.

Our club secretary will also arrange visits to local gardens as well as stately homes with their impressive grounds. One memorable trip was to the Hampton Court Flower show, another to Ickworth House. Ickworth is a National Trust Property close to Bury St Edmunds.

The Gardening Club membership also enjoys several social evenings throughout the year, our summer Buffet, and a Fish and Chip Supper being just two of the highlights.

Hopefully it won't be long before we can resume activities. We always welcome new members so please call 01354638230 for details.

Stay safe.

Steve

OH GNO !

Supply chain issues and the popularity of garden centres during lockdown are causing a shortage of garden gnomes.



The ornaments are in short supply with raw materials hard to come by, and the recent blockage of the Suez Canal contributing to the national shortage.

Ian Byrne, assistant manager of Highfield Garden World in Whitminster, said there had been a "massive upswing" in the sales of garden gnomes. "We haven't seen a gnome in six months now unfortunately," he said. Mr Byrne said garden centres had experienced a "boom" and that their popularity was causing issues with the availability of many popular items. "There aren't any gnomes. There's definitely a shortage. It's a combined thing with garden centres being so busy; I looked at some figures based on March which said garden centres were 97% busier than they were in 2019. Every day has been like a bank holiday. That's good but it's definitely causing some issues because it's not just English garden centres that are booming, it's all across Europe, so it's causing issues with supply," he said.

Sources - various

Ouse Washes Section 10 Works



Important Notice

April 2021

Over the next few weeks, you will start to see movement on the banks where our ecologists will be undertaking surveys and the grass cutting will be getting underway ready for the works to start in the summer.

We have been experiencing problems with trespass and vandalism over the winter and spring. The metal security fencing and gates are being vandalised and, in some places, removed which is providing unauthorised access to the site at Welney and Welches Dam, Manea.

This is a notice to remind the community that for the whole duration of the scheme the Ouse Washes Section 10 works on the Middle Level Barrier Bank is considered to be a construction site. By law our contractor Jackson Civil Engineering has to restrict access to all construction areas where the works are not complete.

The construction work on the bank and haul road between Welney and the A142 at Mepal is not complete and had been closed over winter as it is not safe for public use.

We want to keep you safe. Construction sites are dangerous places with many hidden hazards, and we are working hard to keep all the security fencing and gates secure and will do all we can to protect you.

There is still a full closure of the Middle Level Barrier Bank public footpath and bridleway in place. Our contractor will only close sections of the bank that are being worked on or where we are waiting for the grass to grow.

We will continue to monitor the grass growth in the completed closed sections, and we will re-open these areas of the Middle Level Barrier Bank once it is complete.

Below are the locations of the Public footpath and bridleway on the Middle Level Barrier Bank that we have re-opened for public access.

South Level Barrier Bank

We opened the footpath between the old Anchor Inn pub, Sutton Gault and Chain Corner in September 2019.

Middle Level Barrier Bank

We opened the footpath between Welmore Lake Sluice and Welney in September 2019.

We fully opened the footpath between Earith Sluice and Sutton Gault in February 2021.

We may need to do some remedial work during 2021, any work areas will be fenced off and the footpath will remain open.





Paul Braybrooke

Oil Fired Boiler Engineer

Boiler Servicing & Breakdown Service

Commissions
Tank Replacements

Phone 01353 777788
07946 735691

Littleport in the spotlight ...

Due to the pandemic and the closure of Hammersmith Bridge in London, the Oxford and Cambridge Boat Race was brought nearer to home this year - with the race starting in Queen Adelaide and finishing at Victoria Bridge in Littleport. What followed was a resounding victory for Cambridge in both the men's and women's race. Well done Cambridge!

A local Facebook Page dedicated to historic events in Ely and the surrounding area dug up this lovely little poem which perfectly sums up our beautiful Fenland (featured in the historic Punch Magazine back in 1925) and has latterly become the Littleport Anthem.

The following poem appeared in the PUNCH issue of 20 May, 1925

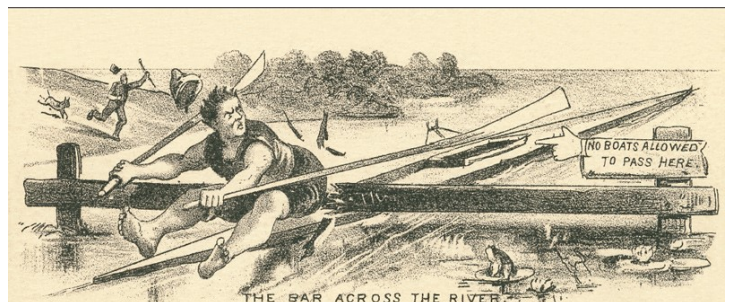
Men till the fields at Littleport,
The spreading fields and low;
And as they toil, amid the soil,
I wonder if they know
That where they drop the golden grain
An ocean used to flow,
And little ships to little quays
Came gladly after tossing seas
And sailors laughed and took their ease,
Long, long ago.

Men till the fields at Littleport,
I wonder if they stir
Amid the stones the crumbled bones
Of some old seafarer,
And feel the salt tang on their lips
Of winds that used to blow;
And hear across a vanished bay
Old sailor-chanties softly gay
From dust of those who went their way
Long, long ago.

When evening's close on Littleport
I wonder if the tide
From distant Lynn comes surging in,
And giant vessels ride
Against the little cottage panes,
And ruby lanterns glow
On slender masts that throng the sea
From Shippea Hill to Southery;
And all is as it used to be
Long, long ago.



Photo: Joe Giddens (The Guardian)



If Everything Seems Under Control...
You Aren't Rowing Fast Enough!

Kids Corner

...a “trees” theme this month...

Did you know that May 16th is “Love a Tree Day!?”

Even though Love a Tree Day is officially celebrated once a year, you should love trees every single day because they enable us to breathe. To show your appreciation, give your favourite tree a hug. Even better, plant a new tree to be enjoyed by yourself and generations to come!



How many faces can you see?



Forest Mix-up Word Scramble

The wind blew through the forest and scrambled the trees in all directions. Can you figure out the tree names by unscrambling the letters?

TTCNHUSE

RPJEINU

PLOPAR

BCEHE

SAENP

LIANAGOM

WDRDOEO

YERPCSS

PMLA

OKA

LLIWWO

LIEVO

BBAABO

HBCRI

KEYUBCE

OIMMAS

YROSMACE

LKOEMCH

TLUNWA

ONGIGK

ECUSRP

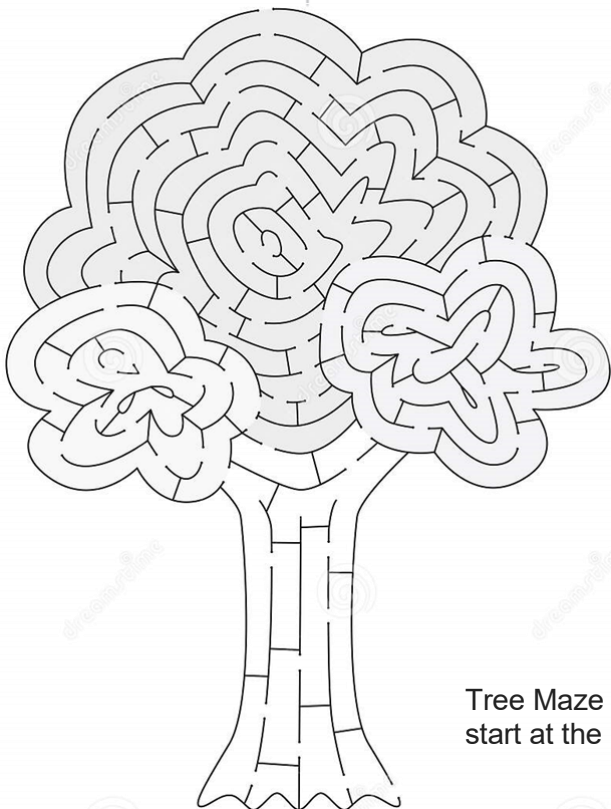
DAECR

EALPM

CLIAL

Did you know?:

- There are over 60,000 known species of trees in the world - and almost certainly more to discover!
- Trees are the largest plant.
- Trees, like all plants, capture the energy of sunlight and through the process of photosynthesis convert the sun's energy into chemical energy, which they use for their own growth and life processes.
- This energy is passed on, supporting a large community of living things.
- Many animals eat the fruits, seeds, leaves, sap, or even the wood of trees.
- On the forest floor, the fallen leaves decompose, thus supporting microorganisms, mushrooms, worms, insects, and other plants and animals.
- Besides food, trees also provide many species of animals with habitat, nesting space, and protection from predators.
- Trees help to modify the climate. They provide shade in hot weather and shelter from the wind. In some places, they help to cause more rainfall and condensation of fog. The forest floor holds water from rain and snow, helping to lessen the effects of flooding and drought. Trees can also hold snowfall in place to prevent avalanches and mudslide and slow the spring melt.
- Many useful products come from trees, including some medicines, rubber, cork, turpentine, tannic acid which is used for curing leather.
- Most deciduous trees lose their leaves in the autumn and begin a cycle of growth in the spring. Evergreen trees remain green for most of the year and they are continuously losing and growing the needles or leaves.
- The largest trees are the Giant Sequoia, some have been measured at over 100m tall!



Tree Maze - start at the top and then work your way to the bottom (or start at the bottom and work your way to the top!)

FOUR SEASONS TREE SERVICES

Qualified & Professional Tree and Client Care

PRUNING ● LOPPING ● FELLING

PLANTING ● REDUCING & RESHAPING

CROWN RAISING ● HEDGE TRIMMING

THINNING ● POLLARDING ● STUMP REMOVALS

OVERGROWN GARDENS PUT BACK INTO SHAPE

FRUIT TREES TREATED ● LOG & WOODCHIP SALES

FREE ESTIMATES & ADVICE WITH NO OBLIGATION

For quality jobs at a competitive price call:

Home: 01353 721665 - Mob: 07771 707921

All work carried out to BS 3998 Standard

A genuine family managed business est. for over 30 years - Fully Insured



THE NAME YOU CAN TRUST



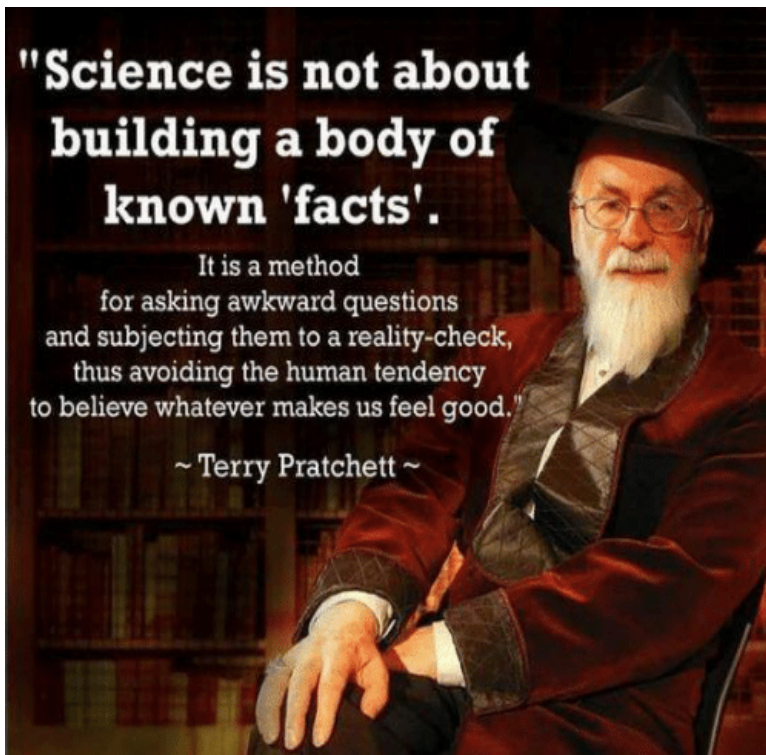
This company offers a 7 day cooling off period

A Point of View

"Science is not about building a body of known 'facts'.

It is a method for asking awkward questions and subjecting them to a reality-check, thus avoiding the human tendency to believe whatever makes us feel good."

~ Terry Pratchett ~



CHRISTCHURCH COMMUNITY CENTRE VANDALISM ... ALREADY!

It is with sadness that the Village Hall committee and Parish Council have to report that the recently installed canopy on the Community Centre has already been vandalised. It appears that someone has attempted to climb onto the canopy, ripping off a section of the guttering. Not only is this extra cost to the village, but it is also very dangerous as the roof of the canopy is only plastic and will not support much weight.

CCTV of the incident is being passed on to the Police.

CRGC Committee



Beauty Treatments

By
Jane

N.V.Q. – i.b.d. – Babtac

LCN Microdermabrasion Facials
NEW Oxygen regeneration Facials - less outlay than Botox (a celebrity favourite)
NEW - Non-surgical firming lift and tone
St.Tropez Spray tanning
Gel pedicures
Shellac manicures
Week-end & semi permanent eyelashes

Rose Cottage,
Christchurch
Telephone: 01354 638378

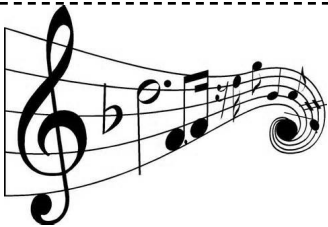


Upvc Windows and doors
Aluminium Windows and doors
Bi-folding doors

Fascia, soffits and guttering
Supalite Warm roofs
Conservatories


THE WINDOW & DOOR BUSINESS LTD

Thewindow&doorbusinessltd@gmail.com | 07875 745125



Who loves music?

"Music can change the world".
Ludwig van Beethoven

"Music is the universal language
of mankind". *Henry Wadsworth Longfellow*

"Life seems to go on without effort when I am filled with
music". *George Eliot*

"A bird does not sing because it has an answer. It sings
because it has a song". *Chinese proverb.*

"Music gives a soul to the universe, wings to the mind, flight
to the imagination and life to everything". *Plato*

"Music expresses that which cannot be said and on which it
is impossible to be silent". *Victor Hugo*

"The music is not in the notes, but in the silence between".
Wolfgang Amadeus Mozart

"A painter paints pictures on canvas. But musicians paint
their pictures on silence". *Leopold Stokowski*

SIX LITTLE STORIES WITH LOTS OF MEANINGS

1. Once all villagers decided to pray for rain. On the day of prayer, all the people gathered, but only one boy came with an umbrella. That is faith.
2. When you throw babies in the air, they laugh because they know you will catch them. That is trust.
3. Every night we go to bed without any assurance of being alive the next morning, but still we set alarms to wake up. That is hope.
4. We plan big things for tomorrow in spite of zero knowledge of the future. That is confidence.
5. We see the world suffering, but still, we get married and have children. That is love.
6. On an old man's shirt was written a sentence "I am not 80 years old; I am sweet 16 with 64 years of experience." That is attitude.

Have a happy day and live your life like these six stories. Remember - Good friends are the rare jewels of life, difficult to find and impossible to replace!!



Here is one of our projects - amongst the Samburu indigenous people and other groups in Northern Kenya

This project strengthens pastoralist communities' resilience to climate change in northern Kenya. This three-year project aims to enhance the climate resilience and adaptive capacity of communities through empowering women and young people, supporting community-led planning and budgeting, and developing local advocacy and policy.



AIMS: 1. To enhance communities' capacity to anticipate, plan and adapt to climate change in Marsabit and Samburu counties. 2. To increase the capacity of community-based institutions to engage with county governments in climate change governance. 3. To improve the capacity of community-based institutions in sustainable management and livelihood diversification. 4. To improve the policy environment for sustainable management, livestock production and use of climate information services. 5. To integrate learning and adaption into programme management.

ACHIEVEMENTS: 1. Baseline evaluation and mapping of groups completed. 2. Formation of climate change committees in all wards. 3. Community involvement in participatory vulnerability and capacity assessments in four wards. 4. Community participation in county annual planning and budgeting in 16 wards. 5. Identified youth, female and male groups for capacity-building on diversified livelihoods.

CHALLENGES: 1. Resource-based conflict caused by drought in both counties. 2. Drought due to two failed rainy seasons has led to migration. This has affected the community's involvement in county planning and budgeting processes.

IN THE ABSENCE OF DOOR-TO-DOOR COLLECTIONS THIS YEAR, YOU CAN DONATE TO CHRISTIAN AID VIA THEIR WEBSITE

<https://www.christianaid.org.uk/about-us/programmes/climate-justice-resilience-fund-project>



Bluebells and HS2 in Warwickshire.

Early May is the classic time to look for Bluebells in ancient woodland. They thrive in Warwickshire offering a magical spectacle at this time

of year. The wild English Bluebell is a deeper blue, with more delicate, drooping bells than the imported Spanish Bluebell more often found in gardens. Global warming means that bluebells now sometimes start flowering in April. Some ancient woods are under threat (in the path of HS2 or developers).

Long Itchington Wood tunnel – protecting ancient woodland.

Long Itchington Wood tunnel is unique as it is the only tunnel on the HS2 Phase One route that uses two tunnelling construction methods. The majority of the tunnel will be constructed using a tunnel boring machine and the remaining section will be built using the 'cut and cover' method. This is where a tunnel 'box' is constructed within the cutting and then the space around the box is filled to create an area of land on the surface. The length of the Long Itchington Wood tunnel is just over a mile.



Hungry?

Well check this out!

Thank you to Annie Nason for submitting this article - if you have had great food (takeaway or maybe even eat-in when allowed) we would love to hear about it. Contact the editorial team at editor@theheron.info.

THE LAMB AND FLAG AT WELNEY has been doing a takeaway menu over the lock-down period. This pub holds some nice memories for me, of sitting down to lunch or dinner with family or friends. It has a nice feel to it, and the food is good. The service is good and welcoming. So, I offered to write a little about their takeaway service. Not having a 'sweet tooth', I just went for savoury dishes.



Lamb Shank

I wouldn't normally get a takeaway from a pub, preferring to pay for takeaway food that I could never cook to perfection, such as Chinese, Thai or Indian Cuisine. I can cook a reasonable (kind of) roast myself. However, I thought I would make an exception, and make the effort to try out the Lamb and Flag Takeaway for a change. Pretty good choice, on the whole, I would say. There are a few vegetarian options, one of which I really enjoyed: Vegan Penang Curry with rice and Naan bread. Very tasty. I am not a vegetarian, so I have also tried a few of their meat dishes. Although not

enamoured of their Mushroom Risotto, the Sunday Roast Beef dinner ... well! It did me for 2 meals! It was delicious! And the Lamb Shank was great. The prices aren't too bad, on the whole. And, what's more, they bring your food out to your car in the car park in a paper bag, and the containers are all recyclable. Well done!



"At the Lamb and Flag, we pride ourselves in producing some of the best traditional, home-cooked food around. Our locally sourced ingredients, experienced chefs and friendly staff ensure your dining experience is exactly what you would expect from an established, popular local ale and eating house". This is from their website. <http://lambandflagwelney.co.uk>

"Aye. There's the rub...." to quote The Bard; because, however nice their takeaway food is, it lacks the best things a good pub can offer - ambiance, atmosphere, a place to meet and enjoy the company of people. DRAT THE VIRUS! It has robbed us all of this human togetherness. I, for one, am looking forward to dining with others at The Lamb and Flag once more. Bring it on!

Sheila Day

Risk of Blood Clots

AstraZeneca Vaccine



4 cases in 1,000,000 Vaccines

0.0004%

Birth Control Pill



500 - 1200 cases in 1,000,000 women

0.05% to 0.12%

Smoking



1,763 cases in 1,000,000 Smokers

0.18%

COVID Infection



165,000 cases in 1,000,000 Cases

16.5%

Maria Leonor Ramos | Médica Interna de Medicina Geral e Familiar

Fontes: Agência Europeia de Medicamentos; Sub T, Hong H, Okano H et al. Pulmonary Embolism and Deep Vein Thrombosis in COVID-19: A Systematic Review and Meta-Analysis. *Thrombosis* 2021; Cheng, Yan-Ju & Liu, Zhi-Hao & Yao, et al. COVID-19: Current and Future Smoking and Risk for Venous Thromboembolism: A Systematic Review and Meta-Analysis.



CEO



General Manager



Manager



Assistant Manager



Employee



Intern

How Observant Are You?

This photo was taken in one of our villages (Christchurch, Euximoor or Tipps End), but where?



Answer for last month - Decorative detail on Holly Tree Cottage, Crown Road. Christchurch.

caters for all occasions
music from the 70s to 2000s

M & K Roadshow

Martin
Mobile DJ

Keith 01354 638615
07479943870
turbo.bruce586@gmail.com

May Day - why is it special?

Records for a celebration at the beginning of May go back to Roman times with the festival of Flora, the Roman goddess of flowers, held from 27 April – 3 May.

In the dark ages the Celts celebrated Beltane or 'the fire of Bel', which represented the first day of summer and was celebrated with bonfires to welcome in the new season. This was certainly a precursor to the celebrations around May Day.



Down through the centuries May Day has been associated with fun, revelry and perhaps most important of all, fertility. The Day would be marked with village folk cavorting round the maypole, the selection of the May Queen and the dancing figure of the Jack-in-the-Green at the head of the procession. Jack is thought to be a relic from the days when our ancient ancestors worshipped trees.

The established Church was not keen to encourage such frivolity with openly pagan roots and in the sixteenth century riots followed when May Day celebrations were banned. Fourteen rioters were hanged, and Henry VIII is said to have pardoned a further 400 who had been sentenced to death.

Following the Civil War when Oliver Cromwell and his Puritans took control of the country, May celebrations were banned. Describing maypole dancing as 'a heathenish vanity generally abused to superstition and wickedness'.

The restoration of Charles II in 1660 saw the return of May Day celebrations. 'The Merry Monarch' gained popularity with his subjects with the erection of a massive 40 metre high maypole in London's Strand. This pole remained standing for almost fifty years.

Traditional English May day rites and celebrations include crowning a May Queen and celebrations involving a maypole, around which dancers often circle with ribbons. Historically, Morris dancing has been linked to May Day celebrations. Our own Townley School has a proud history of such celebrations (thank you to Malcolm Hicks for the 1980 cutting).

In 1889 the Marxist International Socialist Congress, adopted a resolution for a "great international demonstration" in support of working-class demands for the eight-hour day. This was the beginnings of May Day being seen as a holiday supporting workers rights. Around the world communities use this time to reflect and campaign for better working conditions for all.



Since the 18th century, many Roman Catholics have observed May – and May Day – with devotions to the Virgin Mary, in works of art, school skits, and so forth, Mary's head will often be adorned with flowers in a May crowning. 1st May is also one of two feast days of the Catholic patron saint of workers St Joseph the Worker, a carpenter and husband to Mary. This date was chosen by Pope Pius XII in 1955 as a counterpoint to the communist International Workers Day celebrations on May Day.



In the UK, the spring bank holiday on the first Monday in May was created in 1978; May Day itself – 1st May – is, not a public holiday in England (unless it falls on a Monday). In February 2011, the UK Parliament was reported to be considering scrapping the bank holiday associated with May Day, replacing it with a bank holiday in October, possibly coinciding with Trafalgar Day (celebrated on October 21), to create a "United Kingdom Day". Similarly, attempts were made by the John Major government in 1993 to abolish the May Day holiday and replace it with Trafalgar Day.

At time of writing May Day remains a much loved extra break in the spring with some glorious traditions!

Sheila Day



A YEAR ON THE FARM – MAY

I cannot believe how quickly the land surfaces have dried out, following this winter's soaking. Many fields show large areas of bare land, which lay under water for many weeks during the winter months, killing off any intended crop growth.

Another record - coldest first half of April ever recorded, here in the east. It's called 'Climate Change'!

At the time of writing, potato planting is in full swing in ideal conditions, following the winter deluge. Plenty of dust flying on the lighter soils, but some land drains are still running on the heavier land. Onions, peas and sugar beet are through and growing away nicely; however, they could all do with a shower to keep them going, and no more sharp frosts, hopefully. So far, we have recorded -4.5C as the lowest temperature this Spring, some farmers may have recorded lower than this. Pigeons are a problem, persistently feeding on the lush green pea leaves, no matter what deterrents are used. We have some friends in Lincolnshire who have had to re-drill sugar beet owing to frost kill; also, they have had to replant green veg fields for the same reason. Early potato crops have been cut back severely, mainly on the lighter soils, even some under fleece, this delaying crop growth by several weeks.



There is some good news for us farmers however - the cold and frosty weather has killed off any aphids that had survived the winter, and also held back the disease on winter wheat. The bad news - Farmers who store potatoes until April/May/June are having a most difficult season because of the withdrawal of use of the sprout suppressant chemical by the EU. We, as farmers have been using this for years and years to prevent the crop from growing 'chits' while being stored.

Let's hope the good weather prevails with a few showers to keep things growing and COVID 19 keeps on the decline.

Jill Bliss

Parish Council Snippets

Again held over Zoom, although it looks like we will be back in the Community Centre for May meeting as the government has not extended the Bill allowing meetings to be held virtually past the start of May.

Under matters outstanding, there was discussion over the trees overhanging Green Lane. The clerk will send a letter to the house owner to see if he is willing to get them trimmed. The new bin outside the community centre has finally been installed, and three street lights have been repaired. Some roadside drains along Wayside Estate and Church Road have now been emptied, more still need to be done before they can be mapped.

Cllr Hughes reported that the recent Local Highways Initiative bid had failed, in fact coming last on the list. Once again, towns have been given the lion's share of the funding, and there was some discussion on the coincidence that many bids put forward by those councillors on the LHI selection committee succeeded, as they have usually done in previous years.

The community centre canopy has now been installed, some minor fixups were needed but the PC are very pleased with the final result.

The change to the grass cutting contract has paid dividends. A number of residents have expressed how good the cutting looks, and all at a cheaper price than the previous contractors.

Under residents and members issues, the question of funding for the Heron was brought up. It was decided that the Heron are more than welcome to apply for a grant for funding, which will be looked at each year. The PC will look very favourable on any such request given the importance of the Heron to the local community.

Also discussed was an application by the Bowls club for a grant. Given the status of the clubs finances, the PC have advised that they apply to various sporting organisations which are helping to fund sports clubs during the Covid crisis.

An Annual report was also discussed. Despite there being very little going on in this time of Covid and lockdown it was decided to try and put together a report on the PC works this year.

James Hughes

CHRISTCHURCH ELECTRICAL

Simon Freeland Hill Farm, 3 Church
Road, Christchurch, PE14 9PQ

Tel:01354 638802 Mobile:07727 046439



Domestic electrical work undertaken.
No job too small.
Free quotations / estimates.



www.electricalcompetentperson.co.uk

www.electricalsafetyregister.com



Booklet Printing
Business Cards
Digital Photos
Leaflets
Newsletters
Banners

01354 656614

sales@marchsp.co.uk

5 Fenland Walk, March, PE15 8TW



MAKING RURAL INTELLIGENT NETWORKS A REALITY

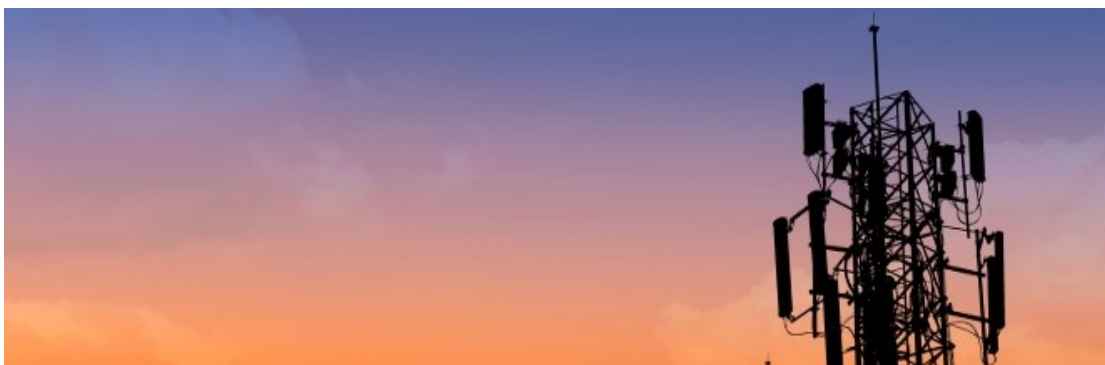
Dr. Nermin Mohamed, Head of Telecommunications Solutions at Wind River writes in Telecoms that despite efforts to improve rural connectivity provision for those living outside of cities, the COVID-19 pandemic has

revealed the work still needed to 'balance out the digital inequalities that exist between town and country' In 2020 the ONS reported 5 per cent of UK adults (2.7 million) did not have access to internet, limiting the potential for students accessing online classrooms, people working remotely, and for doctors and nurses to provide telemedicine services to their rural patients.

The author notes that while urban populations are enjoying the benefits of 5G roll outs, for many rural communities 5G connectivity is still several years away.

Dr Nermin advises that it's imperative that mobile operators not only improve LTE connectivity for rural environments, but also equip residents with full 5G network deployments.

This will need to be done by building intelligent rural networks that leverage AI, analytics, automation and 'turn the rural connectivity dream into a reality', to ensure rural communities are not left behind.





The Dun Cow

Green Lane, Christchurch, PE14 9PG
01354 638323



Saturday 8th May 11.00 am-4.00 pm Charity Garden plant sale in aid of MIND

Monday 17th May, 9.30 am Breakfast Club will restart.

Sunday 30th May 4.30-6.30 pm Teatime Quiz

OPENING HOURS:

Mon-Thur 4.00 pm – 10.00 pm

Fri 3.00 pm – 11.00 pm, Sat Midday – 11.00 pm, Sun Midday – 9.00 pm

FRIDAY FOOD

4.30 pm till 8.00 pm - Phone to book your timed slot.

From Saturday 22nd May we will be offering a range of freshly cooked pizzas.
These will be available to eat in or takeaway.

We will still be in the beer garden until the 17th May for outdoor service only; then you are allowed inside, with table service only and all current Covid rules will be in place.

PLEASE WEAR YOUR FACE MASKS WHEN MOVING ABOUT.

A.R. CLINGO

FUNERAL DIRECTOR

Family Independant
Business

Private Chapel of Rest
Personal Attention

24 Hour Service

Full estimates given at all times

Golden Charter
Funeral Plans



Pinfold House
St. Peter's Road
Upwell, Wisbech
Phone 01945 772502

theWI
INSPIRING WOMEN

What's the saying? "Best Laid plans of mice and men..." Well it was appropriate for our April meeting! We were eagerly anticipating a zoom demonstration by our booked speaker who was going to

show us how to plant a spring tub to glorify our gardens... and at the last minute our speaker was unwell - so it didn't happen!

However, WI women are a resourceful lot, so Beryl (our treasurer) immediately got on the phone and arranged for a replacement speaker!

Our new speaker was Sheila Wilson, who gave an fascinating talk about Ely and the many interesting historical buildings in the city. Sheila also leads physical walking tours of Ely and several members felt that this was something we might consider for the future as an outing.

Our readers may feel that a raffle would be an impossibility at a zoom meeting - but not so! We allocated a number to each member as they came on-line and our speaker chose two numbers. Ann Hicks and Belinda Gladwin were delighted with the hanging baskets which they won! (or at least they will be once they get them!)

Our next meeting is on Tuesday May 11th at 7pm. It will be another zoom meeting and will be resolutions and bingo (yes, we've worked out how to do that by zoom as well!) New members are always welcome - it is quite understandable if ladies want to try a meeting or two before they decide whether they want to join...for more details contact Sheila Day on 07946635908.

Christchurch Art Group



- Our focus is to explore and experiment with the various painting and drawing media.
- To enable participants to develop their own style.
- Above all to have fun and enjoy the sessions.

The sessions are planned and adjusted to suit, depending on the experience and interests of the group. The group leader is experienced in a wide range of media, and has some art materials for you to try out if they are new to you*. We have suitable paper for a reasonable cost to purchase and materials can be borrowed until you have your own*. Our group is friendly and relaxed and we love to welcome new folk.

We normally meet on the 2nd and 4th Tuesday of the month 1.30-3.30 in the Community Centre (term time). Please contact Sandra 01354 638478 or Jan 01354 638217 for more information, or come along and see what we do.

****(Please note when we are able to start back we may still have to follow 'Covid' rules, so may not be able to offer equipment to borrow.)***

If you think might be interested in joining our group when we are able to use the Community Centre once more, please do give one of us a call for more information. Hopefully we might be able to have an informal get together outside, weather permitting.

Friday Night Curry Club

For a truly tasty, authentic and traditional Indian meal - which is also healthy and vegetarian - why not try the *Friday Night Curry Club*.

Adult menu: 2 different curries each week, 2 chapatis and rice – £10

Children's menu: Stuffed chapati, vegetable/pulses and rice - £7

Each week we will feature a different set of dishes. **For a full menu** and more information please phone 07775 336727 or Email: vyasfoods@outlook.com

Please place your order by Wednesday 7pm for your Friday Curry.

The true taste of India



Vyas Foods

 **Instagram**
@vyasfoods



March Road, Welney, PE14 9SE

LW Vehicle Services Ltd

Car and Commercial Repairs

*Class 4 and 7 MOT Testing *Full Diagnostic Service *HGV Maintenance

*Batteries *Tyres *Exhausts *Welding and Fabrication

*Timing Belts *HGV PMI Inspections *Air Con Service and Repair

*Courtesy Car Available *All Service and Repairs Undertaken *Car and Van Sales



Call 01354 610172 **Email** lwvs@outlook.com **Web** lwvehicleservices.com



FENLAND LEISURE PRODUCTS PLAY SOLUTIONS SCHOOLS, PARKS & LOCAL AUTHORITIES

Designing and manufacturing
play equipment in the UK for
over 21 years specialising in:

- Multiplay Towers
- Net Play
- Aerial Runway
- Outdoor Gyms
- Roundabouts & Seesaws
- Spring Rockers
- Slides
- Trim Trails
- BMX & Mountain Bike Tracks
- Seats & Bins
- Fencing
- Surfacing Solutions
- Bespoke Build Service



www.fenandleisure.co.uk

Tel: 01354 638359 Email: sales@fenandleisure.co.uk

SPRING Sudoku Puzzle

SPRING Sudoku Puzzle

G					
		S	R		G
		I			
S	P				
					I
R	N				

Sudoku Directions
Determine what letter should go in each of the empty squares.
Every ROW, Every COLUMN, & Every 6-square GRID should contain the letters S-P-R-I-N-G without REPEATING!

Created by Mandy Truett © 2015 SCOTT TEACHES



BRIAN TWEED *and* SON LTD

FAMILY BUTCHERS

FRESH BEEF, PORK, LAMB AND POULTRY
OUR SPECIALITIES ARE HOME MADE SAUSAGES AND BURGERS
HOME COOKED HAM, ROAST BEEF, ROAST PORK AND HASLETS
ALSO HOMEMADE PIES AND SAUSAGE ROLLS

Telephone: 01945 773248 48, Town Street, Upwell PE14 9DA

CHESS.... What happened in May 1997?

Things had moved on a lot by then, since the beginnings of the game of Chess!

The history of chess can be traced back nearly 1500 years, although the earliest origins are uncertain. The earliest predecessor of the game probably originated in India, by the 7th century AD. From India, the game spread to Persia. When the Arabs conquered Persia, chess was taken up by the Muslim world and subsequently spread to Southern Europe. In Europe, chess evolved into roughly its current form in the 15th century. (H. J. R. Murray).

And in May 1997?

Deep Blue was a chess-playing computer developed by IBM. It was the first computer to win both a chess game and a chess match against a reigning world champion under regular time controls. Development for Deep



The 12th-century Lewis chessmen in the collection of the National Museum of Scotland.

Blue began in 1985 with the ChipTest project at Carnegie Mellon University (USA); Grandmaster Joel Benjamin was part of the development team. IBM hired the development team when the project was briefly given the name Deep Thought. In 1989, it was renamed **Deep Blue**.

Deep Blue won its first game against world champion Garry Kasparov in game one of a six-game match on 10 February 1996. However, Kasparov won three and drew two of the following five games, defeating Deep Blue by a score of 4–2. Deep Blue was heavily upgraded before playing against Kasparov again in May 1997. Deep Blue won game six, thereby winning the six-game rematch 3½–2½ and becoming the first computer system to defeat a reigning world champion in a match under standard chess tournament time controls. However, Kasparov accused IBM of cheating!

(Wikipedia)

One of two racks of Deep Blue, at the Computer History Museum. HUGE!





Christchurch Stargazers

Hello Christchurch Stargazers. Hoping we can all meet up shortly when restrictions are lifted. Well, this is what May 2021 will bring.



Mercury is a well-positioned evening planet, setting 90 minutes after sunset on 1 May. Near the Pleiades on 3 May. **Venus** is an evening planet, near a thin waxing Crescent Moon on 12 May. Very close to **Mercury** on 28 May. **Mars** struggles in the evening twilight. A 14%-lit waxing Crescent Moon lies nearby on 15 May. **Jupiter** is a morning planet, and a 35%-lit waning Crescent Moon lies close on the morning of 5 May. **Saturn** is a morning planet in **Capricornus**. The **Moon** pays it a visit on the mornings of 3, 4 and 31 May. **Uranus** is not visible this month. **Neptune** is not visible this month either. The **Eta Aquarids** will peak on the night between May 5–6 May. The **Eta Aquarids** are a meteor shower associated with Halley's Comet. The shower is visible from about April 19 to about May 28 each year. Look towards the East.



Remember - never ever look at the sun without the correct protective equipment.

Mark

Upwell Computer Repairs

Sales – Repairs - Maintenance - Upgrades

**Sales & Support
Internet Setup
Virus Removal
Tuition
Web Design
Email Setup
System Installations
Data Recovery Services**



**Laptop Screen Replacement
Windows Reinstallation
Hardware Upgrades
Software Upgrades
On-Site Services
Custom Built PC's
Internet Security
Network Installations**

Contact Lewis today for a free consultation

01945 772717 - 07849 778525

support@upwellcomputerrepairs.co.uk - www.upwellcomputerrepairs.co.uk

Meet a Christchurch Parish Councillor ... Dave Gibbs

This month, having "met" all the Parish Councillors, we now meet the clerk, Dave Gibbs.

Thanks to Dave for the information and also for the not too recent photo which apparently was provided "to show I once had hair"!

Dave was born in South East London, where he stayed for 47 years, before moving to the Fens in 2010. As a birdwatcher, he had been a regular visitor to this area since childhood and always planned to relocate, but it took longer than anticipated. After 10 years working in a small investment bank in the City, Dave moved into local government, working on projects exploring the relationship between local councils and their communities. In a varied career, his projects included establishing a scheme of local management for council-owned youth centres, setting up and running voluntary service councils, developing and managing grant aid schemes, working with National Lottery distributors to create, launch and promote new funding programmes, and building partnerships with professional sports organisations to create demonstration projects using sport to break down barriers within communities. His home territory for much of this work encompassed some of the most deprived and multicultural neighbourhoods in London, including Peckham and Brixton.

Following the death of his Father in 2009, Dave's Mother was diagnosed with dementia, so he and his partner Margaret took the opportunity to move to the Fens, buying a house with a double garage that they converted into an annexe. Between them, they provided a safe home for Maureen for the final six years of her life. During this time, Margaret and Dave were married at Wisbech Castle. It was now time for Dave to return to the world of paid employment, so he decided to use his knowledge of local government law to become a parish clerk, initially in Tydd St Giles. He had joined Newton-in-the-Isle Parish Council in 2013 and became Chairman in 2016, so was well qualified for the new role. Having plied his trade successfully in Tydd St Giles, he was approached by Will Sutton about a forthcoming vacancy in Christchurch and was fortunate to be appointed to the role. Dave has since assumed the role of Clerk to Newton-in-the-Isle Parish

Council too, so he now looks after the three smallest parishes in Fenland. He also served as Locum Clerk to Elm Parish Council last year, helping them through a difficult period during the pandemic, so his skills are always in demand!



The role of parish clerk is formally titled Clerk and Responsible Financial Officer and also known as the Proper Officer. The members of the Council make all of the decisions, but the Clerk provides them with the necessary information and guidance. The Clerk undertakes all of the paperwork, correspondence, financial management and record keeping. In a small parish council such as Christchurch, it is normally the only paid role. Alongside his paid roles, Dave is the Treasurer of Newton Village Hall and a Trustee of Cambridgeshire ACRE, the rural community council for the county, and one of their Community Buildings Mentors, providing specialist advice and guidance to village halls and community centres. He is also an assessor for the Hallmark quality assurance scheme for community buildings. Margaret is the Project Manager of Wisbech Foodbank, so Dave devotes a lot of his spare time to the supporting her in that role and counting tins of baked beans! They still run a monthly old people's club in Greenwich, for which Dave volunteered whilst at school almost 40 years ago, although the pandemic has given them a break from the monthly drive to London.

Dave thoroughly enjoys his involvement with Christchurch. Of all of his parishes, he says it has the strongest sense of community and is the most self-reliant, possibly due to its more remote location. He hopes that the Parish Council will put up with him for a few more years and that he'll be able to make a real difference to the lives of those who live here.

[Dave attends the Parish Council meetings as the Clerk, and is not an elected member (employed by the PC), and has no voting rights.]

Wow Dave! We have certainly learned a lot about your role in the Parish Council and the other community concerns you are involved in! It's not just Christchurch that has reason to be glad you and Margaret moved to the fens - but many other villages as well!

UFO Spotted Flying Over March?

It was debatable at one stage when a Christchurch resident saw this object floating 100 ft in the air heading towards the 16 Foot ... turns out it was a fleece covering, ripped from a field. Our resident watched it stay airborne for 10 minutes before floating to the ground.

Makes for a rather unusual picture don't you think!?!?



Church News

At the time of writing, we are hoping to have our first Sunday service in person on the 25th April. This will be followed by another service on **Sunday 16th May at 10:30am**, subject to the continued planned lifting of restrictions and our own risk assessments. We then hope to hold more services each month thereafter, see church noticeboard or the updates on the Christchurch community Facebook page.



Complementary to the live services, throughout May we will continue to host a weekly Sunday service on Zoom for those that can/wish to access it, and also by telephone for those that don't have a 'phone that supports Zoom. This will be from 11 until about 11:45, details for access can be obtained from Sheila Day on 07946 635908 or via Facebook Messenger.



Thanks again to those that participated in the gifts to the March foodbank, they were much appreciated. We may put out another collection around Harvest time in September.

Finally, I wish to personally say "Thank you" to Daphne Symons as she steps down from being a churchwarden for many years. I hope she and Terry continue to have a wonderful time in our village.

Andrew Day

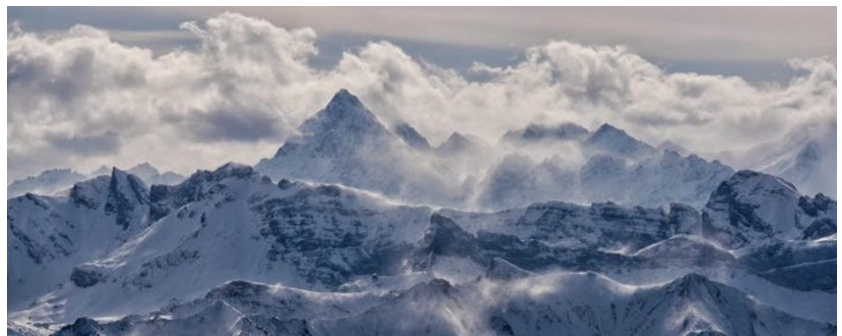
Thoughts from the Rectory

What's on your List?

The Radio Four presenter grabbed my attention while I was in the car this week. He was asking people to 'phone in and mention their own un-accomplishments, things that they had never done. One caller said that they had never been to a Bishops tea party (can I say, neither have I). Another said they had never owned a TV set. Another, that they had never been abroad. When I thought about my own examples to give, I came up with 'I have never been to China, I have never read a Harry Potter book, I have never eaten cockles or mussels, (Praise God!)'. My list could be quite a long one, but that is not necessarily a negative thing; many of the things on my list I would have no desire to experience.

But it made me think about all the other things I *have* done in my life, and it made me realise how blessed I am. For I have flown over the French Alps and seen the snow glistening in the sunshine; I have known the joy of holding my two sons in my arms when they were babies; I have picked a freshly cooked crab with my dad and eaten it straight from the shell. I have enjoyed so many things, and I still savour the memories today.

One of the best things I ever did took place when I was twenty-one years old. I decided to follow Jesus, and my life was changed for ever. That one decision, which I have stuck with for forty years, has enriched me every day. Many things we do in life are soon forgotten - and some are even best forgotten! But for me, the decision to follow Jesus is never to be forgotten, and is one thing which is defiantly worth doing.



Keep well, keep safe.

Ian.

WHITSUNDAY /PENTECOST - Sunday May 23rd

Pentecost is a Christian holy day that celebrates the coming of the Holy Spirit 40 days after Easter. Some Christian denominations consider it the birthday of the Christian church and celebrate it as such. It is the festival when Christians celebrate the gift of the Holy Spirit. Originally, Pentecost was a Jewish holiday held 50 days after Passover.



How's your Greek? The term Pentecost comes from the Greek Πεντηκοστή (Pentēkostē) meaning "fiftieth".



Share your memory on line

To celebrate The Duke's inspiring impact on generations of young people, we're asking anyone who's been in the DofE across the decades to help us build a powerful collection of your DofE stories, and inspire the next generation of young people to begin their DofE journey. <https://www.dofe.org>

Sarah Ivory, who lives in Christchurch, shares here, something of her experiences of about 20 years ago, when she did the Duke of Edinburgh's Award.

"I did the Gold Award D of E back at school. I met Prince Philip at the award ceremony. He was mostly making people laugh. I can't remember what he was saying, just that he made a point of talking to everyone there. After Prince Philip died, my friends that I did expeditions with and I were actually reminiscing about one particular incident. We had lost our path in terrible thick low clouds on Exmoor, and spotted a farm in the distance so decided to go "cross country" to get there, figuring then we would find a road we could follow, so one friend hopped over a fence enthusiastically. When

the next one tried to follow her, she got bounced straight off the fence by the electric current. We never quite worked out how the first one got over without being shocked too. We decided to follow the fence line instead...we were about 4 hours late to our campsite that night!



The expeditions were a lot of fun, despite the fact that we generally got wet and cold. In fact, I'm pretty sure they were more fun in hindsight than at the time. I think the D of E is what led me to go off exploring round the world from about the age of 15, trekking in the Himalayas, climbing in the Atlas Mountains, doing the Inca trail etc.

The other most memorable bit was on my Bronze expedition, walking in some woodland in Sussex. We walked round a corner and a naked man ran past us! "Excuse me girls, sorry for streaking". Still no idea why, how or who. Made a group of 13-year-old girls giggle, though! I don't think I would cite "potential to meet naked men" as a reason to do the DofE!

The Award Scheme was great to do. It just was a lot of fun, and forced you to go out of your comfort zone (away from the telly). The fact that my expedition-mates and I are still reminiscing says a lot about the memories and the friendships!"

In Christchurch there are young people who are doing The Duke of Edinburgh's Award Scheme now, and a couple have shared their experiences here with The Heron. Well done to you, and ALL THE BEST as you complete the journey!

"My experience of the Duke of Edinburgh's award has been very challenging and rewarding for me, as it helped me gain a sense of belonging at a new school, allowing me to make friends with people I would not normally have interacted with. The DofE was incredibly

flexible during the Covid lockdown so far as to change their volunteering section to allow people to help out at home instead of helping around school or other places to complete this section. Due to Covid I am part way through both Bronze and Silver as we haven't been able to do our expedition. I've danced since I was four, and as part of the physical section of my challenge The Duke of Edinburgh's Award also helped me get out onto the dance floor more than ever".

TNA (a 15-year-old young man in Christchurch)

"I completed my bronze Duke of Edinburgh in July of 2019 on one the hottest days of the year. The day was filled with craziness such as us getting lost and walking several miles the wrong way and the sun beaming onto us. Because it was so hot outside, we set up our tents and then left them. We all brought our stuff around the campfire and slept in a circle and joked around until late. We had our 3 sections which

we had to complete. The group that I did the Expedition with all agreed to go to our school and volunteer to pick litter after school. That experience showed me how much people 'litter' and how hard the Caretaker's job is. The Duke of Edinburgh Award has taught me respect and resilience against challenges.

AP (a 16-year-old young man in Christchurch)

You might think that the first person in the Royal Family that Kate Middleton met was Prince William. Not so!

It was The Duke of Edinburgh. About 20 years ago, she and others met him at a ceremony celebrating their achievement in gaining the Duke of Edinburgh's Gold Award.





Christchurch Book Club

Book club had another zoom meeting on 20th April - with 7 participants. Unlike last time, the technology worked perfectly....until we all tried to rejoin after the 40 minute cut off, and then it defeated us!

We have been reading "The Handmaid's Tale" by Margaret Atwood.

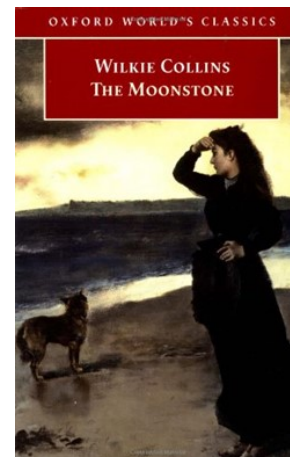
We had a good discussion about the book which is a novel set in an "alternative" future, in a society based on a twisted interpretation of biblical principles where women are subjugated and the role of "handmaids" is to be made pregnant by the important men in the regime. Clearly this is a disturbing read, but all members agreed that it was very thought provoking. We also compared the book to the TV series (just beginning its 4th season) and agreed that although there were many similarities, the TV series takes the story beyond the somewhat abrupt ending of the book.

Our next book is "The Moonstone" by Wilkie Collins.

Our next zoom meeting is on Tuesday 18th May 7,30pm.

Future meetings are 22nd June, 20th July, 24th August, 21st Sept...hopefully some of these will be face-to-face!

If you are interested in joining us, please contact Sheila Day on 07946 635908.



SUPPORT WORKERS YOU CAN TRUST




Pure Heart
Homecare Limited

"PEOPLE WERE VERY
POSITIVE ABOUT THE
KINDNESS AND
RELIABILITY OF THE
STAFF" - CQC

- PERSONAL CARE • POST HOSPITAL CARE • DEMENTIA PATIENT CARE • PHYSICAL DISABILITY SUPPORT
- SHORT AND LONG TERM CARE • COMPANIONSHIP
- REHABILITATION

CONTACT US TODAY TO SEE HOW WE CAN HELP
T: 01945 773861 A: 130 WISBECH ROAD, OUTWELL, PE14 8PF
E: ADMIN@PUREHEARTHOMECARE.CO.UK W: WWW.PUREHEARTHOMECARE.CO.UK

Care at home... because home is where the heart is 

Useful Telephone Numbers

Age UK Cambridgeshire	0300 666 9860
Alzheimer's Society (Fenland)	01945 580480
Christchurch Resident's Association	01354 638990
Churchwarden - Mr Andy Day	07740 056563
Citizens' Advice Bureau, Wisbech	03442 451292
Community Car Scheme (to book a journey)	07902 316360
Community Centre Bookings	01354 638478
Community Fire Safety Officer	07717 858166
District Councillor - Will Sutton	01354 638025
District Councillor - Michelle Tanfield	07908 707129
Electricity Faults - UK Power Networks	105
FACT	01354 661234
Fenland District Council	01354 654321
Floodline	0845 988 1188
Library - March	0354 045 5225
National Debtline	0808 808 4000
NHS	111
Norfolk Dial-a-Ride	01553 770310
Parish Clerk - David Gibbs	07932 191050
Parish Councillor - Jill Bliss	01354 638343
Parish Councillor - Sharon Pomeroy	07837 407536
Parish Councillor - Roger Gladwin	01354 638538
Parish Councillor - Geoff Harper	01354 638681
Parish Councillor - James Hughes	01354 638310
Parish Councillor - Peter Owen (Chair)	01354 638847
Parish Councillor - Kay Miller	01354 638232
Police - PCSO Sue Clarke	07738 025220
Police - Emergency	999
Police - Non Emergency	101
Telephone Preference Service	0345 070 0707
Townley School	01354 638229
Trading Standards	03454 040506
Train Information	03457 484950
Upwell Health Centre (and out of hours)	01945 773671
Upwell Health Centre - Pharmacy	01945 774934
Veterinary Centre - The Crossings (D'Mkt)	01366 382219
Vicars - Ian & Lynda Brady	01354 740627
Water Emergencies	03457 145145
Club Contacts	
Art Club - Jan Clifford	01354 638217
Book Club - Sheila Day	07946 635908
Craft Club - Sandra Lloyd	01354 638956
Gardening Club - Marion Hawthorn	01354 638230
Short Mat Bowls Club - Wendy Keen	01945 772737
WI - Peggy Warby	01354 638339
Jazz Club - Nigel Smith	01945 773121
Christchurch Eco - Nate Lansdell	07568 192940
Christchurch Stargazers - Mark Andrews	07425 165415

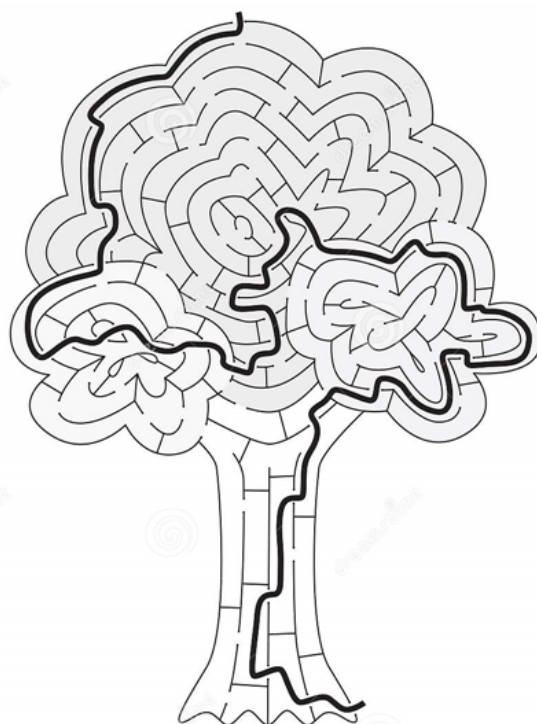
Answers from Kids Corner on Page 16

Forest Mix-up

Word Scramble

SOLUTION

TTCNHUSE	CHESTNUT	BBAABO	BAOBAB
RPJEUINU	JUNIPER	HBCRI	BIRCH
PLOPAR	POPLAR	KEYUBCE	BUCKEYE
BCEHE	BEECH	OIMMAS	MIMOSA
SAENP	ASPEN	YROSMACE	SYCAMORE
LIANAGOM	MAGNOLIA	LKOEMCH	HEMLOCK
WDRDOEO	REDWOOD	TLUNWA	WALNUT
YERPCSS	CYPRESS	ONGIGK	GINKGO
PMLA	PALM	ECUSRP	SPRUCE
OKA	OAK	DAECR	CEDAR
LLIWWO	WILLOW	EALPM	MAPLE
LIEVO	OLIVE	CLIAL	LILAC



Answers from Spring Sudoku on Page 20

G	R	P	I	N	S
I	N	S	R	P	G
N	G	I	P	S	R
S	P	R	G	I	N
P	S	G	N	R	I
R	I	N	S	G	P

Web links in the Heron are active when viewed in our online version www.theheron.info



The Fen View Story. Part 1 – The Orchard

Before any of the houses were built, Fen View was an orchard, of (mostly) Bramley Apple Trees. Several of our older villagers who were either born in the village, or moved here as children, still live in Christchurch, and a few have shared some of their memories of the orchard days. Enjoy!

"I personally don't have any vivid memories of it, although I went past it every day to school for 6 years. I remember the folk who lived there when it was a house and farm, but not much else. The Cawthorns lived in Orchard House during the 50's and 60's. I believe Doris Allerton (nee Cawthorn) is still alive near Clacton. Doris's husband Kenneth died a few years ago. When Doris got married, she and Ken lived at Orchard House, together with her father, widowed Walter Cawthorn, who owned and ran the village shop. I have memories of visiting the shop in those days and remember Walter (pictured) looking just like Arkwright complete with brown coat! When the Allertons moved to Clacton, Derek Bedford and his wife Edna moved in to farm the land and it was Derek who sold the land to developers". **Malcolm Hicks**



"When I was a lad, I used to work for Mr Cawthorn doing odd jobs with the livestock. They had pigs, and chickens. I used to do a Saturday morning and a couple of hours in the evening, cleaning the eggs, helping with the pigs, and helping out in other ways. Where the house "Red Bricks" is, used to be farm buildings which housed the livestock. The orchard was mainly full of Bramley apple trees, but at the very far end of what is now Fen View, there were eating apple trees. I remember, in February 1952, the Cawthorn family, who lived in Orchard House, were the second household in Christchurch to have a Television set. They were very anxious to have it installed in time for the funeral of King George VI, which was to take place on February 15th. They got it in time, and invited me to go to their home and watch the event. I was 14 years old at the time." **Neville Chamberlain**

"My earliest memory of the Fen View orchard is as a child, scrumping apples. At that time, Mr John Cawthorn's orchard had an entrance on to Church Road, which I must say was where the best apples for scrumping were! That scrumping route land was eventually bought by Stanley Poole, who built a bungalow on it, on Church Road. When I was about 6 or 7 years old, I got a bad attack of Impetigo all over my face. One day, when my mother was picking gooseberries in the orchard, she came across "Gipsy Laura", and they spoke about this. Gipsy Laura said she could cure Impetigo, and later brought my mother a jar of Hedgehog Fat. My mother smeared it all over my face and I was cured! There was a Salvation Army Hut on the edge of the orchard, opposite where Rose Cottage is now. In earlier times, Christchurch had its own Brass Band; my Grandfather was in it. They practised in that Hut. When the Cawthorn family eventually sold the orchard, it went for the princely sum of £3,000 or £4,000, purchased by the Bedford family from Welney. They then sold it as building land for £28,000. That was the beginning of the present Fen View. **Terry Symons**



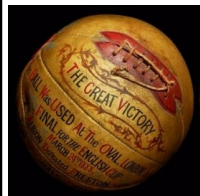
NEXT MONTH. Part 2 – Building Fen View will recount, among other things, the tale of a 17-year-long dispute with various building contractors. Look forward to it!



Would you call yourself an FA CUP FINAL GEEK?

Well, here's a quiz for you! See how you get on.

2. Blackpool 4 – Bolton 3. This became known as The Matthews Final. What year was it played?



3. 1887–88 FA Cup final: West Bromwich Albion won against Preston North End. What was the Score?

4. For what/who is the 1956 FA Cup Final especially remembered, which teams played, and what was the score?

5. Who did Arsenal beat to win the FA Cup in 2014 and what was the score?



6. Why is the 2006 Final between Liverpool and West Ham called "The Gerrard Final"?

7. How many times has Chelsea won the FA Cup?

8. In 2013, we witnessed the last real upset in the FA Cup final, and definitely the biggest one in the modern era. Which teams played and what was the score?



Eden Hazard celebrates after winning the FA Cup with Chelsea in 2018

9. In which year did Coventry win the FA Cup, who did they beat, and how was the winning goal scored?



10. The 2020 FA Cup Final between Arsenal and Chelsea was officially known as "The Heads Up FA Cup Final". Why?



This year the FA Cup Final will be played on May 16th at Wembley Stadium.

ANSWERS

1. 135th 2. 1953 3. WBA 2–1 Preston
4. Bert Trautmann. People may not recall the score, or even the opponents but people always remember that this was the game where Bert broke his neck and played on.
5. Hull City. 3-2
6. A. As the match headed into injury time, it looked like the underdogs were going to cling on for a famous win. But despite struggling with cramp, Gerrard summoned enough energy to race onto a headed clearance and smash in a thunderbolt from 35 yards, levelling the scores again at 3-3. The game went to penalties, with Gerrard among the scorers as Liverpool won the shootout 3-1.
7. 8 times.
8. Wigan Athletic and Manchester City.
9. An unremarkable game looked as though it was going to head into extra time, as Manchester City was unable to break down a stubborn Latics defence. But then, in the 91st minute, Wigan won a corner and pushed for one last chance before the end of regulation time. Shaun Maloney swung over an inviting corner that Ben Watson met perfectly. 1 – 0 to Wigan.
9. 1987. Coventry 3 – 2 Spurs
10. The final appeared to be running to form when Clive Allen headed Spurs in front after just two minutes, although Dave Bennett soon equalised. Spurs were in front again through Gary Mabbutt to lead at half-time – but the Sky Blues were back on level terms just after the hour when Bennett crossed for Keith Houchen to make it 2-2 with his famous diving header. Coventry – appearing in their first domestic cup final – went on to win the cup in extra-time when Mabbutt diverted a Lloyd McGarth cross into his own goal.

Any views expressed in The Heron do not necessarily reflect the views of The Heron Editorial Team.

The team aim to provide a balanced view of village opinions where such views are expressed.

We reserve the right to edit any submissions where we feel this is appropriate.

