

The Heron

Community Magazine

September 2021

Delivered to homes in Christchurch, Euximoor and Tipps End

No.89

In this issue!

Townley School	2
Community Info/Your Letters	3
Heron News	3
Living in Christchurch	4
Editorial/Paralympics	5
Lunch Break	5
Sudoku/Early Seaside Hols	6
Fancy a Day Out?	7
Car Show/Blackberries	8
Oooh!/Thank You Farmers	11
Christchurch Gardens	13
Christchurch Skatepark Story	14-15
Rural Services	15
September Poem	16
WI Open Meeting	16
Olympic Medals Tables	17
Kids Corner/Point of View	18
Ozone Layer	21
Church News/Rectory	23
Christmas Tree Festival	23
Craft Workshop	24
A Year on the Farm	24
Christchurch Harvest Supper	25
Useful Numbers	26
Recipe/Them and Us	27
Kings College Meadow	28



Brilliant!

Sky Brown, 13, becomes Britain's youngest Olympic medallist with a Skateboard bronze



Christchurch Skate Park just after it opened 2009

Read how the vision, cheek and determination of a 12-year-old Christchurch lad – now 27 - made our own Skate Park happen! [Page 14 & 15]

EDITORIAL TEAM:

Editorial Team Leader - Annie Nason

Treasurer, Ad. Manager, Publisher - Elaine Reed-Hughes

Editorial Team Members: Sue Norman, Liz Scott, Jenny Medcalf, Kay Miller

Pat Rigby, Elaine Reed-Hughes

Support—Lewis Bennett (IT), Sandra Lloyd, the Delivery Team and Publishers

ENQUIRIES

editor@theheron.info Tel: 01354 638088

adverts@theheron.info Tel: 01354 638310

Website: www.theheron.info





TOWNLEY SCHOOL AND PRE-SCHOOL

Christchurch, Wisbech, Cambs. PE14 9NA
 office@townley.cambs.sch.uk
 Website: www.townley.cambs.sch.uk
 01354 638229

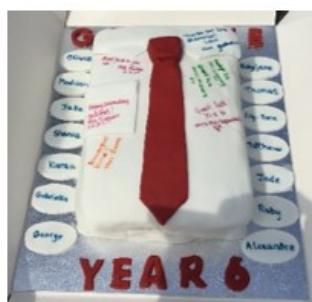


Facebook—Townley School
 and Pre-School

AUGUST 2021

Remember that our website has
 lots more information about school.

Fortunately although we had to close the building due to Covid, the cases did not spread in school and we were able to have the Year 6 children in once the holidays started, for a picnic. Sadly, not all of them could make it. They were a fabulous Year 6 and we are really going to miss them, they are a delightful group, who have demonstrated resilience and kindness. Thank you Year 6, best wishes for the future.



We asked for volunteers to listen to readers last year, but Covid got in the way, if you would like to help please call us.

We are pleased to announce that we have organised another clothes & shoe collection with Bag2School in order to raise funds for our new guided reading books and art curriculum. Bag2School is the UK's leading textile recycler and fundraiser working with schools and since its inception in 2001 it has now paid out over £36 million.

As well as raising vitally needed funds for us, it also helps the environment by helping to divert unwanted textiles away from landfill. A recent DEFRA report has shown that textile collection schemes are helping to reduce the volume of textiles discarded as municipal solid waste. However it is a fact that as a nation we still send 350,000 tonnes of textiles to landfill every year.

By getting involved in our collection, you have an opportunity to sort through your cupboards and wardrobes and donate unwanted textiles in the bag provided – this can include adults' and children's clothes, shoes (tied together please), hats, belts, handbags and soft toys, scarves and ties, jewellery, lingerie, socks. Also - Household linen, curtains, towels, bedding (bed sheets, pillow cases and duvet covers). In addition to raising much needed funds it will also raise awareness amongst the children of the benefits of recycling and reuse.

You can fill any bag to donate your items and don't forget to ask grandparents, friends and neighbours to have a sort out as well! Bag2School will be collecting from school on 27th September at 9am. Please bring your bag (or bags!) and help us have a really good collection. If you need us to collect from your home, just give us a call at school.

Many thanks for helping us with this fundraising opportunity.



FOTS are a fantastic help to the school, they make each day a little better for the children. The lovely hoodies the Year 6 children are wearing are from FOTS! FOTS have also done an amazing job of spreading the word and seeking support for us to purchase some fabulous new guided reading books. We need at least 15 copies of each book (think secondary school whole class reading). I never anticipated the level of support we have received and being emotional like I am, I shed lots of happy tears! Their Go-fund me page had received over £349 in donations last time I looked! I cannot wait to share the beautiful new reading books with you.

Community Information

Mobile Post Office:

Visits Monday to Thursday in the lay-by on Upwell Road

Monday and Thursday - 16.30 to 17:00

Tuesday and Wednesday - 16.10 to 17:00

Fridays - no service.

ANYONE WISHING THEIR ITEMS TO BE POSTED,
ON THE DAY, WILL NEED TO GET THEIR POST TO THE
VAN BY 4.40PM - WHICH IS WHEN IT IS COLLECTED.

Use it or lose it!

Community Car Scheme:

This scheme is still running for Christchurch and surrounding villages. To book a ride or to become a volunteer driver please ring 07902 316360. An additional driver is still required for the scheme. For more information please ring the number above.

Mobile Library:

**OUR MOBILE LIBRARY COMES ONCE A MONTH,
ON THE FIRST TUESDAY, AT 12 NOON.**

The van parks in the lay-by on Upwell Road, opposite to the entrance of Fen View. **USE IT OR LOSE IT?**

You can use the Select and Collect service online, or by calling 0345 045 5225.

https://cambridgeshire-self.achieveservice.com/service/Select_and_Collect

Please support your local Library Service, right in the heart of your community.

Heron News

HURRY HURRY! Our deadline for our 2022 Heron Calendar Photo Competition is now OCTOBER 12th. We have had a few entries, but need more please! Reminder: The Theme this time is "NATURE AND NURTURE IN OUR CORNER OF THE FENS". This is a broad theme, and can include pictures of animals (pets or wildlife), gardens, fields, and all sorts. Looking forward to your contributions, which will be put on our website.

We need the calendar to sell well, as it is a Fundraiser for The Heron.

The calendars will fit easily into an A4 envelope. Send a few to family and friends! The style is different this year: an up-and-over month per page calendar with a spiral "hinge" at the top. It will be around the same price as last year.

Your Letters

A letter from our Mobile Post Office Van to everyone.

As all our regular customers know, we are an extremely busy office. The van covers 100 miles a day, serving 14 different villages, and yes, on occasion, the van needs maintenance.

This van has done over 130,000 miles, and to keep Stevie and me safe, it has needed a lot of work done on it lately. This has been spread over two sessions. The Post Office does not have any spare vans, so I'm afraid we have to have down time in our schedule; our regular customers appreciate this and understand. It is a shame that we have to suffer sarcastic comments on social media. This is a form of abuse, and it has now been reported to the Post Office.

Please remember to be kind.

Pam Salmon



Thank You

I would like to say a big "thank you" for the beautiful flower arrangement I received on my retirement from the Heron Team.

It is a great magazine to get involved with. Please keep up the good work.

Peggy



As we go to press, no Macmillan Coffee Morning has been organised this month in our village. However, we can still donate to this worthwhile charity via their website. <https://coffee.macmillan.org.uk/>



Please remember that no dogs are allowed on the playing field. Thank you. Your co-operation is much appreciated.

Peggy Warby, who has recently stepped down from her Heron commitments of over 20 years (WOW and thank you Peggy), has been chatting with Liz Scott about her memories of her early times in Christchurch. Here is Liz's article.

Living in Christchurch

Have you ever walked around our village and wondered how it has changed over the years? I know I have and I'm equally sure I am not alone. I had the privilege of asking one of our long-standing villagers just what had changed.

Peggy moved into Christchurch with her family at the age of 14. Having been let down by empty promises at a pub in Lakes End, her parents requested a move to a better pub. They took over the running of The Farmers Boy, one of 3 pubs serving the village at the time. At the age of 19 she married Graham, and they celebrated their Diamond Wedding in 2020. All very low key because of Covid rules.

The bus stop had a use then, and busses ferried women to work in a textile factory in Wisbech. Peggy, along with many other women, helped produce pattern books as samples for customers to view. Each piece of material had the checkers signature on the reverse, meaning that any mistakes could be traced back!

Mixed Farming was essential to village life - with pigs and sheep, to name but a few of the livestock to be found here. Each farm provided accommodation for its workers, many of which are now in use today as privately owned properties. Peggy recalls following the men down fields of sugar beet as they 'chopped them out', while the women walked behind 'singling' them. Of course, now it's all done by machinery.

Each field was surrounded by dykes to prevent winter flooding. Winters were harsh in those days, with frequent heavy falls of snow which made for fun and games in the fields. The last time the Wash froze, in 1971, it allowed the many skaters to display their skills (or not!). Fun was had by all. Later in the year, an annual flower festival took place in the village church, with flower arrangements throughout the church and displays placed around the Font.

Many of the properties had some land, much of which has been sold off for new builds. A walk along Church Road reveals much of the village's past. Beside the Church is The Old School, which has been a private residence now for many years. Whilst opposite is a plot of land and if you look closely, you will see an old wooden wheel which lies on the site of the Wheelwright, a business of real importance, given the amount of farming taking place. The village also boasted 2 shops, a coalman, builder, chemist, garage, bike repair shop and a blacksmith. This allowed people to remain in the village to help with work on the land. As well as strawberry picking, help was also needed at harvest time. Peggy recalls borrowing many-a-book from Townley School Library, in the days before the village was included on the mobile library route.

Christchurch remained self-sufficient for many years with youngsters working and playing hard. Fishing was allowed along the 16 Foot as long as the licence was available to view!

Next time you're out for a walk, have a good look at the cottages around you and listen to their stories and imagine how the village used to look. Look closely and you'll notice that all of them have at least one chimney, each one often providing an outlet for at least 2 coal fires. Notice how uneven the roofs are - and of course the walls! Look at the Village sign for evidence of strawberry-growing and pig farming. Just take a minute to stop and think and let your imagination fill in the gaps.



Liz Scott

Advertisers - all our advert rates and conditions can be found on our website www.theheron.info. Business advertisers can book a series of 6 or 12 adverts, paid in advance. Adverts for village fundraising events, personal announcements, or small private ads are usually free.

Do you know someone who would like to receive a Heron each month, who doesn't live in the village?
Contact us at adverts@theheron.info and we will send them a subscription form.
The cost is £25.00 per year (including P&P).

Copy Deadline - The deadline for copy for the October edition of the Heron is 24 September 2021.

At the time of going to press, all information is as accurate and up to date as we can make it. Changes and updates may be published subsequently. All information contributed by outside agencies, including dates etc., will be assumed to be correct.

Editorial

Hello and welcome to our September edition of The Heron. Be sure to read it through carefully – there are all kinds of things going on in the village now, and further afield. What a great feeling it is, being able to open up a bit after the lockdown miseries!

I notice that several new residents have moved into Christchurch over the past month or so. We welcome you, and wish you all the best as you settle down in our 'village-that-isn't-on-the-way-to-anywhere'; a fact that makes it all the more delightful to live in, by the way. You will be experiencing the Harvest Season for the first time here. Be sure to read farmer Jill Bliss's article on page 24.

We hope you will be able to find a lot of local information you may need through our magazine and do make yourselves known to your neighbours. In my experience, most folks are only too pleased to help out if they can, and if they can't, they likely will know someone who can.

Enjoy September!

Annie Nason



LUNCH BREAK

Put the date in your diary –
Wednesday 8th and 22nd
September 2021 from 12 noon
– 2pm, in the Community Centre. IT'S FREE!

BYO Lunch. Catch up with old friends, make new ones. Chat over lunch with Tea or Coffee and relax.

Always the 2nd and 4th Wednesdays of the month.

Please note ... Many of our regulars are in the Age risk category for Covid, although most will have had both their vaccinations a while back, so our plan is to be cautious - Hands, Face, Space, Ventilation.



Tokyo Paralympics: Ellie Simmonds and John Stubbs to carry GB flag.

Both athletes competed in their fourth Games in Japan.

Simmonds, 26, was the first woman to carry the flag for GB at a summer Games since fellow swimmer Maggie McEleny in 2000.

Stubbs, 56, was the oldest member of the GB team and was the first archer to fulfil the role in recent history.

"I'm hugely honoured to carry the flag on behalf of all the athletes, support staff and for the entire nation back home," said Simmonds, who has won eight Paralympic medals, including four golds, since making her debut at Beijing 2008 aged 13. Stubbs, who won gold in the individual compound event at Beijing 2008 and silver in the mixed team compound eight years later in Rio, described his nomination as "incredibly emotional". "It's an absolute honour to represent ParalympicsGB as flag bearer alongside Ellie," he said.

WELL DONE TO ALL OUR PARALYMPIC ATHLETES!



Can you help?

DESPERATE PLEA FROM CHRISTCHURCH BOWLS CLUB

Christchurch Bowls Club are looking for a volunteer to look after the green and the surrounding gardens. If we are unable to find someone willing to do this work, then unfortunately the Club will fold at the end of the financial year. If you are willing and able to commit to carrying out this work or need further information, please contact Malcolm on 01354 638260.

Letters to the Editorial Team

The Editorial team welcome letters from its readers. Please email letters to: editor@heron.info or post them to *The Editor of The Heron, Grasshopper Cottage, 5 Upwell Road, Christchurch, PE14 9LF.*

PLEASE NOTE: Letters will only be considered for publication if they are accompanied by name and contact details - names will be published, but not contact details. The Heron will not share any contact details unless given permission.

The team look forward to hearing from you!

PLEASE NOTE:

With immediate effect, all future adverts (upon renewal) will need to be formatted as follows, to ensure they fit neatly into the dedicated area within the magazine:

Quarter Page (14cm High x 9.5cm Wide)

Portrait Format

6 x issues £50

12 x issues £90

Eighth Page (6.5cm High x 9.5cm Wide)

Landscape Format

6 x issues £34

12 x issues £64

Please contact adverts@theheron.info or phone Elaine on 01354 638310.

Sudoku

Answer on page 26

	3					1				
11			10		5	7		4	8	6
			4		3	10		1		5
		10		12	11			5	3	
	12				2	6	5	7		11
		7		4						12
7							2		6	
12			11	6	7	1				9
		5	6			11	10		2	
	4		2		12	5		6		
9		6	12		4	2		10		8
				10						4

Early seaside holidays remembered....

This is the first in a mini-series of articles. We would welcome any similar memories from others, which will cheer us up during dull winter months. If you don't fancy writing them down, we can arrange for a member of our team to have a chat with you and write your memories down. Please get in touch with the Editor to begin that process.

"The first holiday I remember was one spent in Ramsgate when I was four years old. We went there by train from our local station. It was a steam train and I found it rather frightening, with the noise and billows of steam and smoke. It was black and looked menacing.



When we arrived, we stayed in a Guest House with three meals a day provided, which proved to be a mixed blessing. No sooner had we arrived at the beach, when we had to return to the Guest House for the midday meal. While on the sand, I remember a photographer came round and plonked a large Donald Duck next to me and took a photo, which was to be collected the next day from a booth on the Pier.

My clearest memory is of the Amusements, and one in particular. We went in a little train into a tunnel. It was very dark, but the walls of the tunnel were decorated with pictures made of coloured light bulbs. Some of the pictures had parts that moved. There was a windmill whose sails went round and, my favourite, a large black and white cow with a butterfly on its nose and a moving tail which tried to flick it off! Simple pleasures, but I found them enchanting".

Sue Norman.



Fancy a day out? Here's what's on in September

3rd & 4th September 2021 Friday and Saturday from 7.00pm-10.00pm
Skylark Maze Torch Night, Skylark Garden Centre, Manea Road PE15 0PE
Family Evening, food available 01354 741 212 info@skylarkgardencentre.co.uk

4th & 5th September 2021 Saturday and Sunday from 9 to 5

MCN Festival of Motorcycling

East of England Showground, Oundle Road, Alwalton, Peterborough PE2 6XE Test drive latest bikes, Meet the Kawasaki team, biking accessories



5th September 2021 Sunday

Art and Crafts Fair from 10.00am

St Johns Church, Main Road, Church End, Parson Drove, Wisbech PE13 4LF

Art and crafted items for sale from local artists, crafters and creators. Free Entry. Refreshments available.

10th September 2021 Friday

Willow Wreath Making Workshop by our very own Caroline McGonagle at Twisty Willow Floristry. 10-3pm.

BRING YOUR OWN LUNCH £20.00 including supplies and tea & coffee. Christchurch Community Centre.



18th & 19th September 2021 Saturday and Sunday **Duxford Battle of Britain Show**

TICKET EVENT ONLY www.iwm.org.uk/airshows

Duxford, Cambridgeshire, CB22 4QR

Spitfires, Hurricanes, 1940s music and dance, entertainment and activities

25th and 26th September 2021 Saturday and Sunday

East Anglian Game Fair. Euston Estate, Thetford IP24 2QH Tel: 01263 735828

40 bird clay pigeon shoot, gun dog, fishing and farrier demos, horse boarding UK Championship, British scurry and trials driving, trade stands, food and drink stalls.

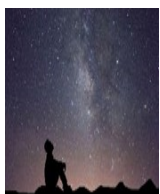
28th September 2021 Tuesday

Childeric Saddles Little Downham Horse Trials

Ely Eventing Centre, Downham Common, Little Downham, Ely, Cambridgeshire, CB6

2TY LD INTERNATIONAL – Advanced & CCI4*-S with day before dressage

Entries Secretary - Sarah Robinson - eventingentries@outlook.com



Christchurch Stargazers

Hello Christchurch Stargazers! What does September bring?

Mercury is an evening planet, rapidly deteriorating throughout the month, virtually setting with the Sun on 30 September. **Venus** is a low evening planet, setting an hour after sunset. A thin **Moon** is nearby on 9 and 10 September. **Mars**, The Red Planet, is too close to the Sun to be seen this month. **Saturn** is a well-positioned low, evening planet; a bright **Moon** close by on 16 and 17 September. **Uranus** is on the threshold of naked eye visibility in **Aries**; a morning planet, **Uranus** is well placed this month. **Neptune** will be a binocular planet. **Neptune** reaches opposition on 14 September and is visible all night.

I plan to try to set up a meeting in October, for everyone that's interested, so we can all get together.

Remember - never ever look at the sun without the correct protective equipment.

Mark Andrews



Christchurch Gardening Club

An English Country Garden

In common with everybody else in the UK, the Gardening Club has been on hiatus for the past 18 months, waiting for the lockdown to ease. Now that it has, our club secretary Marion was able to set up an evening visit to a local garden, one that was postponed from last year.

So it was that the members gathered on Monday 26th July at Janet and Dons Garden in Upwell. Janet has been a long-time friend to the club, often supplying plants and table decorations for our summer buffet. Should any of our readers be looking for plants she sells them from a stall in School Road, Upwell, across from their house, and are well worth a look. The garden is extensive as well as containing a plethora of interesting plants, trees and shrubs affording the members a very pleasant evening stroll, guided by our knowledgeable hosts. It was a very enjoyable evening catching up with friends over a cup of tea and a piece of cake.

The Club will re-start properly after Christmas but in the meantime, anyone interested in joining please get in touch and we will add your name for contact when we are about to reconvene.

Call Marion or Steve 01354638230.

September is the best time for Blackberrying!



Did you know?

Blackberries contain a wide array of important nutrients including potassium, magnesium and calcium, as well as vitamins A, C, E and most of our B vitamins. They are also a rich source of anthocyanins, powerful antioxidants that give blackberries their deep purple colour.



CHRISTCHURCH COMMUNITY CENTRE
BRINGS YOU

THE ANNUAL CAR SHOW

STALLS INCLUDE.. FLORISTRY | CRAFTS | GIFTS |
FUDGE CAKES & BISCUITS | MICRO BREWERY |
CANDY FLOSS AND MANY MORE, BRING THE
WHOLE FAMILY ALONG FOR A FANTASTIC DAY
OUT!

SEPTEMBER SUNDAY 12TH
9:30AM - 4:00PM
•FREE ENTRY ALL DAY•

Granary Studio

Your local picture framer

01354 638614

The Granary
Hall Farm, Upwell Road
Christchurch Cambs PE14 9LJ



March Stationery & Print

Booklet Printing
Business Cards
Digital Photos
Leaflets
Newsletters
Banners

01354 656614

sales@marchsp.co.uk

5 Fenland Walk, March, PE15 8TW

FOUR SEASONS TREE SERVICES

Qualified & Professional Tree
and Client Care

PRUNING ● LOPPING ● FELLING
PLANTING ● REDUCING & RESHAPING
CROWN RAISING ● HEDGE TRIMMING
THINNING ● POLLARDING ● STUMP REMOVALS
OVERGROWN GARDENS PUT BACK INTO SHAPE
FRUIT TREES TREATED ● LOG & WOODCHIP SALES



FREE ESTIMATES & ADVICE WITH NO OBLIGATION

For quality jobs at a competitive price call:

Home: 01353 721665 - Mob: 07771 707921

All work carried out to BS 3998 Standard

A genuine family managed business est. for over 30 years - Fully Insured

THE NAME YOU CAN TRUST



This company offers a 7 day cooling off period



LW Vehicle Services Ltd
Car and Commercial Repairs

- Class 4 and 7 MOT Testing
- Full Diagnostic Service
- HGV Maintenance
- Batteries - Tyres - Exhausts
- Welding and Fabrication
- Timing Belts
- HGV PMI Inspections
- Aircon Service and Repair
- Courtesy Car Available
- All Service and Repairs Undertaken
- Car and Van Sales

Call 01354 610172

Email lwvs@outlook.com

Web lwvehicleservices.com



March Road, Welney, PE14 9SE



Upwell Computer Repairs

Sales – Repairs - Maintenance - Upgrades

**Sales & Support
Internet Setup
Virus Removal
Tuition
Web Design
Email Setup
System Installations
Data Recovery Services**



**Laptop Screen Replacement
Windows Reinstallation
Hardware Upgrades
Software Upgrades
On-Site Services
Custom Built PC's
Internet Security
Network Installations**

Contact Lewis today for a free consultation

01945 772717 - 07849 778525

support@upwellcomputerrepairs.co.uk - www.upwellcomputerrepairs.co.uk

P R PARKER

Established 1978

General Building and Maintenance

CARPENTRY	REFURBISHMENT	GLAZING
PLUMBING	AND	PAINTING
PLASTERING	RENOVATION	DECORATING
BRICKLAYING		RENDERING
ROOFING	01354 638380	GUTTERING

FREE ESTIMATES

All Types - Houses - Flats - Shops - Offices



Your Complete Outdoor Play Solution

Design · Manufacture Install · Maintain · Parts



+44 (0) 1354 638 359

sales@onlineplaygrounds.co.uk

onlineplaygrounds.co.uk



OOOH!

"That gap is definitely getting bigger" turned out to be the biggest understatement, as the sharp winter frost caused the metal hinges to shear, and the side of our raised fishpond literally fell



away! When it's an 8ft square raised pond, that's a lot of water gushing out, leaving bemused fish in 8 inches of water and two bemused grown-ups watching them.

The two adults, with not a jot of DIY common sense between them, agreed the fish would need to be moved to safety – but where? The little ones could be transported to the small pond and covered in netting but not the bigger ones, especially as we might have more frost to come and they needed much deeper water.

"They'll have to go in the bath", it was decided, so off they went in search of large plastic boxes to transport them. Wheelbarrow at the ready to take the boxes with fish to the house - but they would still need to be carried upstairs.



The bath was filling as one of the adults, leaning against the hot tub, had a Eureka moment...the hot tub of course! So fresh water was hosed into the hot tub (which wasn't hot at all) and the fish soon swam happily in there while their pond was repaired. Who says fish don't deserve a staycation too?

Sue Rudge

**THANK YOU TO ALL
OUR LOCAL FARMERS
FOR ALL THAT YOU DO
FOR US.**

We hope you have a very good harvest this year; it has been a difficult 2020/2021.



Paul Braybrooke Oil Fired Boiler Engineer

**Boiler Servicing
& Breakdown Service**

Commissions

Tank Replacements

**Phone: 01353 777788
or 07946 735691**

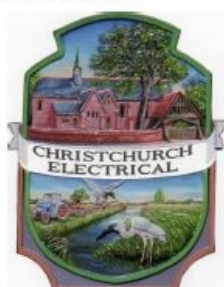
CHRISTCHURCH ELECTRICAL

Simon Freeland Hill Farm, 3 Church
Road, Christchurch, PE14 9PQ

Tel: 01354 638802 Mobile: 07727 046439



Domestic electrical work undertaken.
No job too small.
Free quotations / estimates.



www.electricalcompetentperson.co.uk

www.electricalsafetyregister.com

A JONES & SON

TELEVISION SALES/REPAIRS/INSTALLATION

FREE LOCAL DELIVERY
FIRST CLASS AERIAL INSTALLATIONS/ADDITIONAL POINTS

26 March Road, Wimblington, March, Cambs PE15 0RN

Tel: 01354 740320

CLOSED ALL DAY TUESDAYS



**ALL PESTS
CONTROLLED**

Domestic & Commercial Pest Control

www.allpestscontrolled.co.uk

WOODWORM

BEDBUGS

MOLES

MICE

RATS

ANTS

SQUIRRELS

RABBITS

WASPS

BIRDS

FLEAS

BEES



Call Danny on

Tel: 01945 772 153

Mob: 07795 073 985



PROFESSIONAL PEST
CONTROLLERS REGISTER

Wisbech

•FUNERAL SERVICE•

Independent Family Funeral Directors

Personal, caring & affordable

Advice without obligation

24 hours a day



FUNERALS FROM £2,495

Inclusive of all fees

Chapel of Rest

Traditional, Modern & Eco-friendly funerals

Pre-paid & pre-arranged funeral plans



Funeral Directors James
and Laura are proud to be
serving the community

17 Old Market, Wisbech, Cambridgeshire, PE13 1NB

01945 405950 (24hr)

www.wisbechfuneralservice.co.uk



645 Services Ltd

For your complete Oil Services

Registered Office: 12/13 The Crescent, Wisbech, Cambs PE13 1EH – Director: B E Easey
Company Registration Number: 07872493 ~ VAT Number: 126 5422 30

For a competitive oil quote, for delivery in the village and surrounding area,
(Outwell, Upwell, Tipps End, Welney) please call 645 Services' local Representative,
Elaine, on 01354 638310 or 07803 178824 or Email: elaine@645services.co.uk

We will always try and be the best price around - with local deliveries scheduled for
most weeks throughout the month.

Christchurch Gardens July/August 2021





The story of our Christchurch Skatepark

Thank you for the opportunity in sharing with you my story of skateboarding in Christchurch.

As many may have seen or heard already,

Skateboarding has taken a massive leap by being a part of the Olympics, and I have heard quite mixed reviews from those who I have spoken to as to whether it's enjoyable to watch or not. Skateboarding's intended purpose was never to be a professionally commentated on, or a documented sport. In fact, most people refuse to call it a sport! However, having Sky Brown bring home a bronze medal for our country may make some people see it differently, and I hope those who watched it thoroughly enjoyed it. I never thought the day would come where I would walk into the Dun Cow and the locals would be watching a Skateboarding final run - and have dead silence throughout the pub! (a historic moment in my life).

Having been a big part of Skateboarding for as long as I remember, I have always taken onboard the criticism that it's 'a children's sport', 'a waste of time', and one of my favourites being 'don't you think it's about time you gave it up and grew up'. But who is to stop you doing what you enjoy?

My journey began at my grandparents' house in Epsom, Surrey. Here I found my first skateboard, and to this day I wish I had a clue where it was! I spent a lot of time at Gran's over the summer period and would utilise this new 'toy' for as long as I was allowed outside! My grandad was very health and safety conscious, and would often drill into me the dangers of skating near the pond, near the steps, near practically anything which could be of danger to me!

Soon after, we moved from Surrey to Christchurch, I was seven years old. It soon dawned on me that neither of my older siblings were remotely interested in my Skateboarding obsession. So I was in a remote village, with few friends, brothers who did not entertain my hobbies, and a road which I wasn't allowed to cross alone without being told when it was safe to go. For a few years my hobby remained in the garden, with an old sheet of plywood left over from a DIY project. And with the help of a few stolen screws and a tape measure, I built my first ramp in the garden, much to my parents' dislike. I'm sure to this day they're thankful for the peace and quiet it gave them, as the motion detection light on the garage - whilst it poured with rain mid-winter - provided me with all the happiness I needed.

Fast forward to around 2006-2007 when The Croft opened in the village. By this point I was allowed to Skateboard around the village, but there was nowhere of interest for me to skate, until this brand new development came to the village, leaving unfinished kerb stones, smooth tarmac and street lights! Still without anybody sharing my hobby, this became my new training ground. I would now skate there as much as possible. It was there where I managed to influence a few others in the village that this was great fun, and soon enough there were 2 or 3 of us in an evening, skating together! Tearing up and down a quiet cul-de-sac every day, I apologise to anyone who still hates me for this now!

By late 2007 it dawned on me that other towns and villages had Skateparks. The luxury of going to March Skatepark was a dream, and here is where I met a lot of other Skateboarders, and soon felt as though I fitted in. Problem was, I lived 8 miles away, with no transport on demand, and an estate which just didn't match the criteria of a skatepark. It was then I realised that we needed a skatepark in Christchurch. How would I ever go about getting one if there were only a few of us that were interested? Regardless, I emailed Will Sutton, Chairman of the Parish Council, and asked for his thoughts on a skatepark in the village. I distinctly remember this email because I had to have both parents beside me to go over my spelling and grammar to make sure it was suitable for a chairman to read. To my delight, I got a response and it suddenly became a reality. I was to get the village a Skatepark, having just sent one email! I soon learnt that there was much more to this.

After much correspondence, I was asked if I could prove there would be around 10 people who would use the Skatepark, should they build one? If so, they would organise a coach to take us to an indoor Skatepark in Kings Lynn, all fees paid, and McDonalds afterwards. My heart dropped, knowing I had only one or two people to rely on locally. However, I agreed to this opportunity and promised there would be a coachful! On the day, one other person and I sat on this coach at the agreed meeting place. My whole dream shattered in seconds.

Fortunately for us the driver pulled off, and instead of dropping us home, took us to the Skatepark in Kings Lynn, all fees were covered! I then received another email, offering another opportunity to take a 'coach load' to Kings Lynn. My time was **now** to prove to them, so I put the word around school to absolutely anyone! All I asked is that they meet at Christchurch Memorial Hall at a set time, endure a few hours at a Skatepark and they would get a free McDonalds! The day came and I pulled it off. The coach was almost full, with absolutely no-one but myself with any benefit to this 'audition'! All looked promising for the following months, with numerous emails back and forth.

Continued on page 15 ...



Suddenly everything went quiet, and for a while I heard no update on any plans. My dreams came crashing down once again, and went back to my roots - The Croft. One evening a police car pulled up beside me and asked me to move along. It was almost unheard of to see police in the village, especially to tell off a little kid Skateboarding. I was

quite shaken by this and when I got home, instead of telling my parents the police had come to stop me Skateboarding because of the noise I was creating, I decided to email the Parish Council once more and let them know what was happening. Believe it or not, a month or two later, I sat with the directors of a Skatepark design team, choosing which option of ramps/setup we would prefer. In November of 2009 a Skatepark was put on the playing field of Christchurch. Twelve years later the Skatepark still brings enjoyment to those of all ages, I have since formed a substantial group of Skateboard friends, many of which wouldn't be skating today had it not been for the Christchurch Skatepark.



I never thought that it would become a reality, and even now, at 27 years old, a self-employed plumbing and heating engineer, I still find time to go to the Skatepark, and smile, knowing the happiness it has brought, and will bring, to generations. In winter time you will see me there sweeping the leaves; in summer you will see me cooking a communal BBQ for everyone who is there. I

can never thank Will Sutton and those involved enough, for helping me through the process of gaining such an asset to the village. I hope in ten years' time the Skatepark remains a success and maybe one day we will have our own Sky Brown in the village!

Dan Rushton

"Daniel was a lovely lad which has carried through to adulthood. I'm so pleased he has written this article as it was his, and friends' persistence that started the whole project off".

Will Sutton
9 August 2021



CAMBRIDGESHIRE 'YOUNG PEOPLE OF THE YEAR' AWARDS 2010

At an emotional awards ceremony, the best and brightest young guns were rewarded for selfless actions such as caring for the terminally ill, fundraising for the disabled and volunteering in the community.

The trailblazers included 16 year old Daniel Rushton, who campaigned for a £55,000 Skatepark in Christchurch, after police told him off for riding along the footpaths.



REWILDING 5% OF ENGLAND COULD CREATE 20,000 RURAL JOBS

The Guardian reports the rewilding 5 per cent of England could create nearly 20,000 jobs in rural communities and increase employment by 50 per cent compared with intensive farming, according to new data from charity, Rewilding Britain.

The projection is based on surveys of 27 large rewilding sites in England. The area represents about 0.2 per cent of England and the job gains have been extrapolated to 5 per cent of England. A spokesperson from the Department for Environment, Food and Rural Affairs comments that the Green Recovery challenge fund will invest in rewilding projects and communities across the country and is on track to support 2,500 jobs, especially those in rural areas.



September

By Helen Hunt Jackson

The golden rod is yellow;
The corn is turning brown;
The trees in apple orchards
With fruit are bending down.

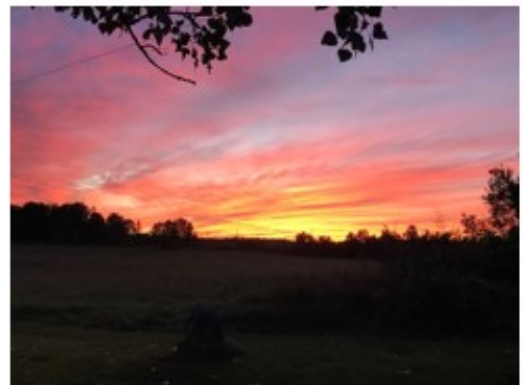
The gentian's bluest fringes
Are curling in the sun;
In dusky pods, the milkweed
Its hidden silk has spun.



The sedges flaunt their harvest
In every meadow-nook;
And asters by the brookside
Make asters in the brook.

From dewy lanes at morning
The grapes' sweet odours rise;
At noon the roads all flutter
With yellow butterflies.

By all these lovely tokens
September days are here,
With summer's best of weather
And Autumn's best of cheer.



Christchurch WI - OPEN MEETING!

On September 14th we will be welcoming Alan Gray - a tennis umpire. Alan has lots of experience in the profession and his talk is entitled "You Cannot be Serious!" Although we will be in the large hall, we do not want to be too crowded, so it would be wise to book your place. All are welcome (male and female!!!).

Tickets for non-members £5. Contact Sheila Day to book your place on 07946635908.

- Our focus is to explore and experiment with the various painting and drawing media.
- To enable participants to develop their own style.
- Above all to have fun and enjoy the sessions.

Christchurch Art Group



The sessions are planned and adjusted to suit, depending on the experience and interests of the group. The group leader is experienced in a wide range of media, and has some art materials for you to try out if they are new to you*.

We have suitable paper for a reasonable cost to purchase and materials can be borrowed until you have your own*.

Our group is friendly and relaxed and we love to welcome new folk.

We meet on the 2nd and 4th Tuesday of the month 1.30-3.30 in the Village Hall (term time)

Autumn term starts on the **14th September** for six sessions. We start back with some basic information on papers, brushes and how to use them.

If you would like a programme please contact Jan and one will be sent with any further information.

Please contact ...**Sandra 01354 638478** or **Jan 01354 638217** (janandcliff@brimstone46.plus.com) ...for more information, or come along and see what we do.

**(Please note when we start back we may still have to follow 'Covid' rules, so may not be able to offer equipment to borrow. Items can be ordered for use if requested)*

Different ways of looking at the 2020 Olympic Medals Table.

Sources: Reporter Robin Levinson-King (Toronto). IOC. World Bank. If you are interested, check out the link: <https://www.bbc.co.uk/news/world-us-canada-58143550>

Top 10 performers by total medal count

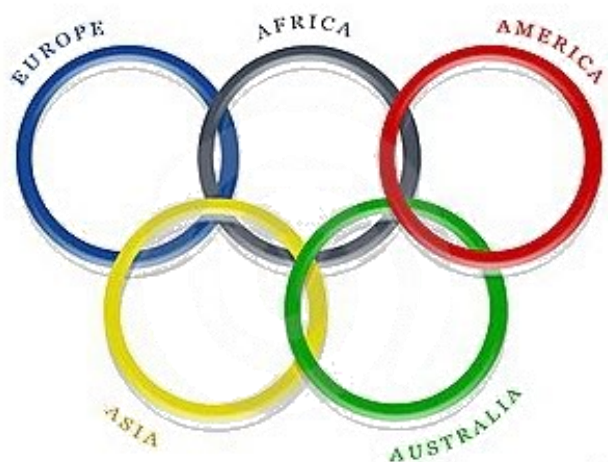
Rank	Country	Gold	Silver	Bronze	Total
1	US	39	41	33	113
2	China	38	32	18	88
3	ROC	20	28	23	71
4	Great Britain	22	21	22	65
5	Japan	27	14	17	58
6	Australia	17	7	22	46
7	Italy	10	10	20	40
8	Germany	10	11	16	37
9	Netherlands	10	12	14	36
10	France	10	12	11	33

Top 10 performers by GDP per capita

Rank	Country	Gold	Silver	Bronze	Total	GDP per capita (US\$)
1	China	38	32	18	88	10,500
2	ROC	20	28	23	71	10,295
3	Kenya	4	4	2	10	1,838
4	Ukraine	1	6	12	19	3,525
5	Uganda	2	1	1	4	817
6	Ethiopia	1	1	2	4	936
7	India	1	2	4	7	1,901
8	Brazil	7	6	8	21	6,797
9	Iran	3	2	2	7	2,283
10	Uzbekistan	3	0	2	5	1,686

Top 10 performers by population

Rank	Country	Gold	Silver	Bronze	Total	Population (m)
1	San Marino	0	1	2	3	0.03
2	Bermuda	1	0	0	1	0.1
3	Bahamas	2	0	0	2	0.4
4	New Zealand	7	6	7	20	5.1
5	Jamaica	4	1	4	9	3
6	Slovenia	3	1	1	5	2.1
7	Fiji	1	0	1	2	0.9
8	Georgia	2	5	1	8	3.7
9	Netherlands	10	12	14	36	17.4
10	Hungary	6	7	7	20	9.7



Kids Corner

A skateboarding theme this month!

Skatepark Fun

Word Search Puzzle



BOWL PARK	HEELFLIP	QUARTER PIPE
CONCRETE	KICKFLIP	RAMPS
DECK	KIDNEY BOWL	SKATEBOARD
FUNBOX	KIDS	SNAKE RUN
GOOIFYFOOT	KNEE PADS	TAILSLIDE
HALF-PIPE	NOSEGRIND	TRICKS
HAND PLANT	OBSTACLES	VERT RAMP
HANDRAILS	OLLIE	WIPEOUT

Really bad skateboard jokes...

Why did the skateboard go to the movie?
Because it was wheely board.

What is the hardest thing about skateboarding?
Concrete.

What time is it when an elephant stands on your skateboard?
It's time to buy a new skateboard.

Where do you learn to skate?
In a boarding school.

My best friend broke his arm while skateboarding.
That must have hurt wheel bad.

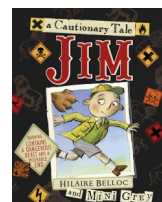
Colour magic

Colour the picture using the code and see what you find!



Point of View

"Always keep a hold of Nurse for fear of finding something worse".
Jim, Who ran away from his Nurse, and was eaten by a Lion by Hilaire Belloc. Cautionary tales were popular during the Edwardian era, and Belloc's were considered among the best.
https://monologues.co.uk/Childrens_Favourites/JimBelloc.htm



CONNECTION?



Did you read the article about Gareth Southgate in last month's Heron?
Euros 2020: What all of us can learn from Gareth Southgate.

From an article by the well-known journalist, Matthew Syed. *Matthew Syed is author of Rebel Ideas: The Power of Diverse Thinking, and represented Great Britain in table tennis at two Olympic Games.*



The Dun Cow

Green Lane, Christchurch, PE14 9PG
01354 638323



OPENING HOURS:

Mon-Thur 4.00 pm – 10.00 pm
Fri 3.00 pm – 11.00 pm, Sat Midday – 11.00 pm, Sun Midday – 9.00 pm

MONDAY FOOD

9.30 am till 11.00 am - Cooked breakfasts.

FRIDAY FOOD

4.30 pm till 8.00 pm - Phone to book your timed slot.

SATURDAY FOOD

4.30 pm till 9.00 pm - A range of freshly cooked pizzas to eat in or takeaway.

PLEASE NOTE:

The kitchen will be closed on Friday 3 September and Monday 6 September.
However, pizzas available on Saturday 4 September as usual.

**WE ARE STILL ASKING THAT YOU WEAR FACE MASKS
WHEN MOVING ABOUT INSIDE THE PUB.**

A.R. CLINGO

FUNERAL DIRECTOR

Family Independant
Business

Private Chapel of Rest
Personal Attention

24 Hour Service

Full estimates given at all times

Golden Charter
Funeral Plans



Pinfold House
St. Peter's Road
Upwell, Wisbech
Phone 01945 772502

Friday Night Curry Club

For a truly tasty, authentic and traditional Indian meal - which is also healthy and vegetarian - why not try the *Friday Night Curry Club*.

Adult menu: 2 different curries each week, 2 chapatis and rice – £10

Children's menu: Stuffed chapati, vegetable/pulses and rice - £7

Each week we will feature a different set of dishes. **For a full menu** and more information please phone 07775 336727 or Email: vyasfoods@outlook.com

Please place your order by Wednesday 7pm for your Friday Curry.

Vyas Foods

 **Instagram**
[@vyasfoods](https://www.instagram.com/vyasfoods)



Russell's Family Butchers

Family butchers for 5 generations. All of our meat and poultry is fresh free range from our own farm.

Visit us at our shop in Upwell or at our market stall in March (Saturdays) or Wisbech (Thursdays and Saturdays).

**97 School Road, Upwell, PE15 9EW
Tel: 01945 773419**



Regulated and accredited training to individuals, parents, businesses, schools, and colleges.

Courses Available (NVQ)

- ⊕ First Aid at Work - Level 3
- ⊕ Safeguarding - Level 3
- ⊕ Food Safety - Level 3
- ⊕ Mental Health First Aid
- ⊕ And much more

✉ lucy@cachtraining.co.uk

☎ 07854433412

f  cachtraining

LAUGH WHEN
YOU CAN,
APOLOGIZE WHEN
YOU SHOULD
AND LET GO OF
WHAT YOU
CAN'T CHANGE.



Qualified Seamstress

All dressmaking and sewing jobs undertaken. Alterations to clothing and curtains.

**Please contact: Sandra Kay
on 01354 638478**

caters for all occasions
music from the 70s to 2000s

M & K Roadshow

Martin
Mobile Dj

Keith 01354 638615
07479943870
turbo.bruce586@gmail.com

SUPPORT WORKERS YOU CAN TRUST



Pure Heart Homecare Limited

"PEOPLE WERE VERY
POSITIVE ABOUT THE
KINDNESS AND
RELIABILITY OF THE
STAFF" - CQC

- PERSONAL CARE • POST HOSPITAL CARE • DEMENTIA PATIENT CARE • PHYSICAL DISABILITY SUPPORT
- SHORT AND LONG TERM CARE • COMPANIONSHIP
- REHABILITATION

CONTACT US TODAY TO SEE HOW WE CAN HELP

T: 01945 773861 A: 130 WISBECH ROAD, OUTWELL, PE14 8PF

E: ADMIN@PUREHEARTHOMECARE.CO.UK W: WWW.PUREHEARTHOMECARE.CO.UK

Care at home... because home is where the heart is 

INTERNATIONAL DAY FOR THE PRESERVATION OF THE OZONE LAYER



September 16th marks the International Day for the Preservation of the Ozone Layer. The UN established this day to spread awareness about the importance of the ozone layer. This layer of the Earth's stratosphere is located 9 to 18 miles above the Earth's surface. The ozone layer plays a huge role in protecting our health and the environment.

The ozone layer has a vital job. It's to absorb most of the sun's ultraviolet radiation. Too much exposure to UV radiation is detrimental to our health. UV rays cause sunburns, premature aging, a weakened immune system, and eye problems. The biggest concern about UV radiation is cancer. Both humans and animals get cancer from excessive exposure to UV rays. The depleting ozone layer offers less protection from these harmful UV rays. But humans and animals are not the only things affected by UV

radiation. The environment is impacted, as well. Excessive UV rays inhibit the growth process of plants. When this happens, certain species become extinct.

Substances called chlorofluorocarbons (CFCs) are one thing that has caused ozone layer depletion. CFCs are found in aerosol that comes in cans. Hydrochlorofluorocarbons (HFCs) are also to blame. These are harmful gases found in coolants. While CFCs are no longer widely used, HFCs are still in use.

Since 2005, ozone depletion has declined by 20 percent. There are hopes that the ozone will heal completely in the Northern Hemisphere by the 2030s and the Southern Hemisphere by the 2050s.

Despite the good news that ozone depletion is reversible, there are still some concerns. For this reason, the UN and other environmental groups promote awareness for protecting the ozone layer.

<https://nationaldaycalendar.com/international-day-for-the-preservation-of-the-ozone-layer-september-16/>
You might not be aware, but here in Christchurch there is a CFC Disposal Yard on Upwell Road.

What can we do? Avoid using toxic cleaning products; maintain old fridges and dispose of broken ones correctly; Calm down your car use; use aerosols sparingly.

STOVELINER

**INSTALLATION OF MULTI FUEL
WOOD BURNING STOVES.
SERVICE & MAINTENANCE.
FULLY INSURED.
HETAS CERTIFIED.**



**COVERING CAMBRIDGESHIRE, NORFOLK,
SUFFOLK, BEDFORDSHIRE, HERTFORDSHIRE,
ESSEX AND LONDON.**

STOVELINER@OUTLOOK.COM

07940 001 830

FIND US ON SOCIAL @STOVELINER

Beauty Treatments By Jane

N.V.Q. – i.b.d. – Babtac

**LCN Microdermabrasion Facials
NEW Oxygen regeneration Facials - less
outlay than Botox (a celebrity favourite)
NEW - Non-surgical firming lift and tone
St.Tropez Spray tanning
Gel pedicures
Shellac manicures
Week-end & semi permanent
eyelashes**

**Rose Cottage,
Christchurch
Telephone: 01354 638378**

Outwell Timber

For all your Timber and Building Supplies

**ISLE ROAD, OUTWELL
PE14 8TD**

Tel: 01945 77 21 16

**FENCING, PANELS, TRELLIS
TIMBER, PLYWOOD, DECKING**

SAND, BALLAST, GRAVEL

SCREWS, NAILS, BOLTS

PAINT, SILICONE, HAND TOOLS

**LOCKS, ELECTRICALS, PLUMBING,
GUTTERING
UNDERGROUND PIPE & FITTINGS**

CEMENT, MULTIFINISH, PLASTERBOARD



At last! For the first time in well over a year, the WI have been able to meet together in the Community Centre!

Although things had changed since last we met in this way (eg wearing masks every time we left our seats and having all windows and doors open), it was a joy to all be together indoors for what was as near to a "normal" meeting as possible!

We welcomed Karen and Matt Hall who volunteer as first responders in our locality. They gave a fascinating presentation about the work they do and the equipment they use. The members were concerned about the fact that the first responders as well as giving their time for free, get no fuel expenses and have to fund-raise to buy the equipment they need. We decided that, although we are a small group, we would do our best to support them financially. We have two bigger open meetings coming up (Sept and Nov) and the raffle money from these meetings will go to the first responders. In addition, we will be having a stall at the car show on Sept 12th and half the money raised will also go to the first responders.

One of the key messages from our speakers was that if you need to call emergency services in the night, it is often difficult for them to find the exact address in unlit country lanes - they recommended putting lights on so that the location could be found!

A raffle was held and prizes were won by Ann Hicks and Pat Rigby.

Church News

HARVEST SUPPER on Saturday 9th October in the Community Centre. Do come along! It's a while since we have had the opportunity to hold one, and the last one was a great success. See page 25 for full details.

From September we will be lifting some of the restrictions in church such that booking is no longer required but we will continue to adhere to social distancing within the church building and encourage mask wearing.

12th September at 10:30

Service of Holy Communion.

26th September at 10:30

Service of Morning Prayer.

See the church noticeboard or the updates on the

Christchurch Community Facebook page for any further news.

Complementary to the live services throughout September we will continue to host a weekly Sunday service on Zoom for those that can access it and also by telephone for those that don't have a phone that supports Zoom. This will be from 11 until about 11:45, details for access can be obtained from Sheila Day on 07946 635908 or via Facebook messenger.

The first session of Cake, Coffee and Chat since COVID restrictions have lifted, will be on Thursday 14th October from 2.00 – 3.30pm in the church.

Please note the new day. We will be discussing at this session the arrangement for future sessions. All very welcome.

Andrew & Helen

Thoughts from the Rectory

Thoughtful People

Lynda and I were at our local super market one Friday and we were in the queue, ready to pay for our shopping. In front of us were two women, unloading their trolleys. Now the first woman was about to pay at the checkout when she asked Lynda and me, could she borrow our card? The lady was very polite about it; 'as I don't have one', she said. Now I'm sixty-two years old and I was born in the night, but I wasn't born last night! Using someone else's credit card is one of those 'no go' areas. If truth be known, I even have limitation of its use for my wife Lynda, and when it comes to the children, I only use cash (mainly theirs!).

But then the penny dropped! This lady was wanting to borrow our store reward card. This card is wonderful, and it allows shoppers to earn points for money to buy things either in the store or elsewhere. I think it works out for every pound spent a penny reward goes on our reward card, so I let the lady use it. Now the lady next to her was related, so she also used our card. In that

one shop, we received reward points for the contents of two full trolleys as well as our own. Some days the good Lord just keeps the blessing flowing.



That kind of experience makes you realise that there are some kind and thoughtful people out there in the world we live in. There is a lot of negativity doing the rounds as people come out of Covid, but we can do good towards others in all kinds of situations: which can range from the mundane supermarket trip to the raising of money for the good causes, and even dropping off a tin of beans for the food bank. During this Covid time along with others I have witnessed the goodness and generosity of the human spirit in our community reaching out, touching, and changing the lives of so many people. The early church leader Paul said 'Let God change the way that you think. Then you will know how to do everything that is good and pleasing to him'. (CEV Romans 12:2). For we can be thoughtful people where ever we are.

Keep well keep safe.

Ian.

Christchurch Christmas Tree Festival 2021

We are hoping to hold a Christmas Tree Festival again this year, in the church. It will take place on Saturday 27th November, which is the day before the first Sunday of Advent. Trees will be dressed on Friday 26th November. There will be a date announced nearer the time, when all folks who are interested can meet and sort out further details.

We would like to have a theme this year and we are suggesting 'Christmas Carols', however, you do not have to stick to this theme if you have other ideas. Individuals, groups and clubs are all welcome to decorate a tree.

Please remember that you will have to provide your own artificial tree, lights must only be battery operated LED type and please no edible decorations.

If you are interested in decorating a tree, please contact me, Helen Chappell, on 07702 225259.





We are pleased to announce that the first meeting of Christchurch Crafty Crafters will be on Wednesday 1 September 2021 - 7.00 pm - 9.00 pm. This will be a "getting to know you" Cheese and Wine evening and all potential "crafters" will be welcome. We want to hear your ideas and this will also be an opportunity to showcase any of the things you have made, with a view to potentially sharing your skills with the rest of the group.

We hope you are able to come.

WILLOW WREATH MAKING DAY WORKSHOP, Christchurch Community Centre

Friday 10 September 2021

10.00am - 3.00pm

This will be our first day workshop. I'm sure many of you have seen the wonderful work that Caroline does at Twisty Willow Floristry. We are very lucky to have her as our first tutor in our day workshop programme where she will show us how to make our very own willow wreath.

Cost: £20.00 (includes all supplies, tea & coffee but please bring your own lunch).

To book your tickets please visit:

<https://www.eventbrite.co.uk/e/willow-wreath-with-caroline-mcgonagle-tickets-166934077319>

Alternatively you can pay cash, when you book your place, by contacting either Elaine 01354 638310 or Jane 01354 638131 to book your place.



A Year on the Farm - September

At the time of writing this article, we in Christchurch were very lucky to escape the very heavy rain and thunderstorms forecast for the area. However, we did have a little rain and drizzle – enough to stop combining for a while. Nice full moon last evening and a much better forecast for the coming week, so wheels will be tuning and dust flying once more.

In general, Vining Peas will be the first to be harvested and transported quickly to the processing factory in Kings Lynn, where they are graded, any trash discarded and quickly frozen to maintain freshness (from field to factory in 90 minutes). This year's crop of Vining Peas is the heaviest in general, for several years. Of course, there are exceptions. The combinable crop of Dried Peas has produced an average crop this year, with plenty of dust flying in the process. Thank goodness for a combine cab with air con! Next, about farmers who grow Oil Seed Rape; the acreage grown by them is down by 50 per cent because of the attacking flea beetle. At present there are no sprays available to kill the bugs off. Yield this year is below average in general resulting in higher prices.

Winter Barley has again produced an average crop this year, for the malting trade. Most Barley crops have produced a heavy crop of straw this year. Bailed Barley Straw is selling for good money - most destined for the livestock industry, mainly in the West Country. Winter Wheat crops have produced some disappointing yields, down by 30 per cent on average. This grain is low in bushel weight due to the disease Septoria, which kills off the green leaves and so reduces the yield.



The best spray for this problem has been taken off the market, resulting in no spray of any value available to cure the problem. Spring Barley, Tic Beans and Linseed are not quite fit in general to harvest yet. Sugar Beet is looking much better than last year, as there was no aphid attack earlier on this year. Early 'green top' potatoes are producing average yields, with a steady trade. Due to excessive flooding in Europe, (approximately 50,000 acres of potatoes were affected) could result in shortages.

Land cultivations following harvest are now being carried out, and Rape for the 2022 harvest is now being drilled. The cost of tractor diesel and artificial fertiliser is going up by 100 per cent going into 2022! This is costing farmers much more to produce good quality crops next year.

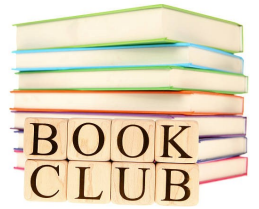
At time of writing (towards the end of August), the forecast promises a good weather week. Fingers crossed. There's plenty of combining to do yet!

Jill Bliss

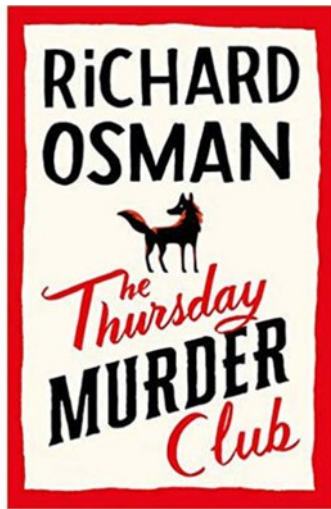
Christchurch Book Club

Book club had the first face-to-face meeting for a long time on 24th August - it was lovely to all be together again.

We had been reading "With the End in Mind" by Kathryn Mannix.



This book was recommended to one of our members who was facing bereavement. Kathryn Mannix is a consultant in palliative care and the subject of this book is death. The basic premise of this book is that in past times, people tended to die in their homes and most people would have experience of seeing a close relative die. This demystified death and to a certain extent removed the fear. Most members thought that this was a very significant book and whilst not a "fun read", felt that it was a very worthwhile book.



Our next book is "The Thursday Murder Club" by Richard Osman.

We now have an increased number of copies of our books - so we may have spares. Do contact Sheila Day if you would like to borrow one.

Our next meeting is on Tuesday 21st September 7,30pm. At Pat Rigby's house 75 Church Rd (right at the end by Padgetts Rd).

If you would like more information, please contact Sheila Day on 07946635908.

Christchurch Parish Church Harvest Supper

Saturday 9th October 2021
Christchurch Community Centre
6.30pm until 10.00pm

Menu

Cottage Pie served with vegetables
or

Caramelised onion, spinach and mushroom Cottage Pie
(Vegetarian) served with vegetables.

Various desserts

Tea and Coffee

Entertainment by singer and guitarist Simon Rodgers.

Tickets £10

For tickets, please contact:

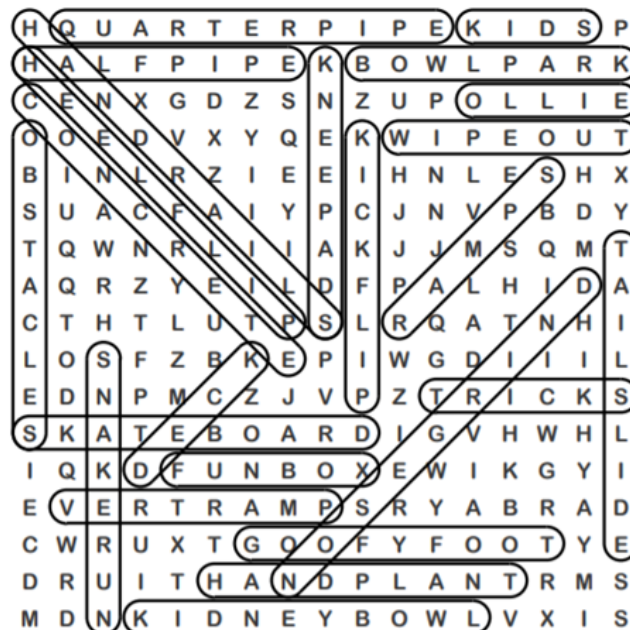
Helen Chappell 07702 225259,
Karen Beers 07483 272580 or
Sheila Day 07946 635908

Soft drinks will be provided but feel free to bring your own alcohol.

Useful Telephone Numbers

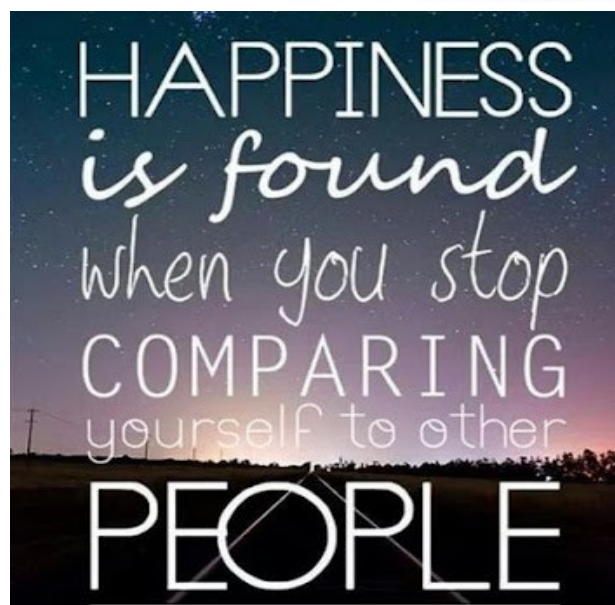
Age UK Cambridgeshire	0300 666 9860
Alzheimer's Society (Fenland)	01945 580480
Churchwarden - Mr Andy Day	07740 056563
Citizens' Advice Bureau, Wisbech	03442 451292
Community Car Scheme (to book a journey)	07902 316360
Community Centre Bookings (Bryan Burfield)	07918 664402
Community Fire Safety Officer	07717 858166
District Councillor - Will Sutton	01354 638025
District Councillor - Michelle Tanfield	07908 707129
Electricity Faults - UK Power Networks	105
FACT	01354 661234
Fenland District Council	01354 654321
Floodline	0845 988 1188
Library - March	0354 045 5225
National Debtline	0808 808 4000
NHS	111
Norfolk Dial-a-Ride	01553 770310
Parish Clerk - David Gibbs	07932 191050
Parish Councillor - Jill Bliss	01354 638343
Parish Councillor - Sharon Pomeroy	07837 407536
Parish Councillor - Roger Gladwin	01354 638538
Parish Councillor - Geoff Harper	01354 638681
Parish Councillor - James Hughes	01354 638310
Parish Councillor - Peter Owen (Chair)	01354 638847
Parish Councillor - Kay Miller	01354 638232
Police - PCSO Sue Clarke	07738 025220
Police - Emergency	999
Police - Non Emergency	101
Telephone Preference Service	0345 070 0707
Townley School	01354 638229
Trading Standards	03454 040506
Train Information	03457 484950
Upwell Health Centre (and out of hours)	01945 773671
Upwell Health Centre - Pharmacy	01945 774934
Veterinary Centre - The Crossings (D'Mkt)	01366 382219
Vicars - Ian & Lynda Brady	01354 740627
Water Emergencies	03457 145145
Club Contacts	
Art Club - Jan Clifford	01354 638217
Book Club - Sheila Day	07946 635908
Craft Club - Sandra Lloyd	01354 638956
Gardening Club - Marion Hawthorn	01354 638230
Short Mat Bowls Club - Janet Harper	01354 638681
WI - Sheila Day	07946 635908
Jazz Club - Nigel Smith	01945 773121
Christchurch Eco - Nate Lansdell	07568 192940
Christchurch Stargazers - Mark Andrews	07425 165415

Answers from Kids Corner on Page 18



Answers from Sudoku on Page 6

5	3	2	7	8	6	4	1	9	11	12	10
11	1	9	10	2	5	7	12	4	8	3	6
6	8	12	4	9	3	10	11	1	7	5	2
4	6	10	1	12	11	8	7	5	3	2	9
8	12	3	9	1	2	6	5	7	4	10	11
2	11	7	5	4	10	3	9	8	1	6	12
7	10	4	3	5	9	12	2	11	6	8	1
12	2	8	11	6	7	1	4	3	10	9	5
1	9	5	6	3	8	11	10	12	2	7	4
10	4	1	2	7	12	5	8	6	9	11	3
9	7	6	12	11	4	2	3	10	5	1	8
3	5	11	8	10	1	9	6	2	12	4	7



Web links in the Heron are active when viewed in our online version www.theheron.info

Recipe for Autumn Apple and Blackberry Cake

Makes 12 slices

INGREDIENTS

140 g caster sugar
140 g unsalted butter room temperature
2 medium eggs
140 g self-raising flour
Half a teaspoon baking powder
Quarter of a teaspoon each of cinnamon, mixed spice and ground ginger (a little more if you like the taste).
2 eating apples peeled and grated (grate when ready to add them otherwise they will go brown).
250 g of blackberries (unless shop bought, soak in lightly salted water for half hour before using, then rinse, drain and dry well).

METHOD

Grease and line an 8-inch cake tin. Preheat the oven to 180°/160°C fan.
In a bowl cream together the sugar and the butter until light and fluffy.
Add the eggs and mix in well.
Sieve in the flour, baking powder, cinnamon and ginger in the bowl and mix well.
Grate the apple and dry off with a paper towel and mix in well. If the apple has made the mix very wet add a little more flour a tablespoon at a time.
Fill the cake tin with the mixture and add the blackberries making sure you can still see the tops of them.
Bake for 25-40 minutes until golden brown and until a cake tester comes out clean.
Allow to cool in the tin for about 10 minutes then take out of the tin and transfer to a cooling rack.



Them and us?



In the USA, everyone seems to be saying “it was so fun.” Is it right or is it wrong?

In formal contexts, the word **fun** is traditionally a noun and not an adjective. So you can safely say “our trip was full of fun” or even “our trip was fun.” But saying “that was a fun trip” or “the trip was so fun” will provoke a sniff or two of disapproval. In casual speech, however, the adjective form of **fun** is so common that most major dictionaries say (sometimes begrudgingly) that it should be considered standard, at least in informal contexts. There are a few possible reasons for the popularity of “so fun,” but one of the strongest may be that the adjective form of **fun** is both needed and useful.

After all, other nouns with similar meanings have adjective forms: **amusement** has **amusing**, **delight** has **delightful**... So, whilst it's still not a good idea to use “so fun” in very formal situations, it does seem to be here to stay in casual speech.

“Whilst” or “while”?

There's no distinction in meaning. **Whilst** is common in British English, but it has fallen out of use in American English over the past century. The Associated Press, for example, always uses **while**. Some American speakers occasionally use **whilst**, but others consider it faintly pretentious. As for which is more appropriate, if you speak British English, go ahead and use **whilst**. If you speak American English or another dialect in which **whilst** is less common, **while** is probably the better choice.
<https://www.grammarly.com>

“Woke”: Compliment or criticism?

In the two years since it's become a regular feature of political debates, it has been used as a badge of honour by some on the left, but more often as an insult by those on the right.

The person who many people consider coined it was the novelist William Melvin Kelley,” says Elijah Watson, news and culture editor of American music website Okayplayer and author of a series of articles called The Origin of **Woke**. “In 1962 he published a New York Times essay titled “If You're Woke, You Dig It”. In 2008 singer-songwriter Erykah Badu used the phrase “Stay woke” in her song Master Teacher. “It then took a new life of its own when she started tweeting it,” says Watson.

“‘Stay woke’ really is about staying aware of injustices happening both in America and abroad.

COMPLIMENT OR INSULT? “PEOPLE ARE VERY SPLIT ON WHAT IT MEANS,” SAYS BOBBY DUFFY, DIRECTOR OF KING'S COLLEGE LONDON'S POLICY INSTITUTE. HIS TEAM HAS BEEN RESEARCHING THE UK'S CULTURE WARS, INCLUDING WHAT PEOPLE THINK OF THE WORD WOKE. “A QUARTER OF PEOPLE THINK OF IT AS A COMPLIMENT, A QUARTER OF PEOPLE THINK IT'S AN INSULT AND THE REST EITHER DON'T KNOW OR HAVE NEVER EVEN HEARD OF THE TERM,” PROF DUFFY SAYS. “AMONG THE YOUNG, OVER HALF OF THEM THINK IT'S A COMPLIMENT, BUT ONLY 13% OF THE OLDEST GROUP THINK IT'S A COMPLIMENT.”
[HTTPS://WWW.BBC.CO.UK/NEWS/UK-POLITICS-58281576](https://www.bbc.co.uk/news/uk-politics-58281576)

Ed. I have never heard it, or of it!



Cambridge University's King's College meadow harvested with horses

August 2021

A wildflower meadow planted on part of a pristine Cambridge University lawn is being harvested with the help of shire horses and a traditional hay wain.

The meadow was planted at King's College Chapel last year. The aim was to create a "biodiversity-rich ecosystem" in an area that had been lush lawn since the 1720s. The college said traditional harvesting methods would give wildlife time to leave, and the bales used to create new meadows across the city. Head gardener Steve Coghill hailed the meadow a success, saying it had been quick to attract wildlife during its first season. "This year, horses have been brought in to harvest it. Not only do they have a far lower carbon footprint than using a rotary mower, the sight of these wonderful creatures at work in the college should make for a remarkable, bucolic scene and bring a bit of Constable to Cambridge," Mr Coghill said. The resultant bales were taken away on a traditional



cart - a hay wain. The sight of a wain will be familiar to those who have seen Suffolk artist John Constable's famous painting of the cart, shown here.



It took three years to prepare the King's College meadow, which slopes down to the River Cam behind the chapel. It has now come to the end of its second year of flowering. Last year poppies, cornflowers and corn chamomiles bloomed, and this year has also seen the germination of perennial plants such as kidney vetch and yellow rattle. A biodiversity monitoring study is being carried out, tracking the ecological changes as the site

transitions from 18th Century lawn to meadow. The college said the meadow "supports three times more plant species than the lawn, including nationally scarce species like wild candytuft, and species like cornflower whose native populations have all but disappeared from the UK". About 130 insect species have so far been identified at the site and the "thriving population in turn has a positive benefit for animals which feed on the insects, such as bats". "Five bat species use the college's grounds, with bats ten times more likely to feed over the meadow than the remaining lawn", a spokeswoman added.



Any views expressed in The Heron do not necessarily reflect the views of The Heron Editorial Team. The team aim to provide a balanced view of village opinions where such views are expressed. We reserve the right to edit any submissions where we feel this is appropriate.

