

The Heron



Community Magazine

December 2021

Delivered to homes in Christchurch, Euximoor and Tipps End

No.92

In this issue!

Townley School	2
Community Information	3
Your Letters/Dole Distribution	3
Advertising/Diary Dates	4
Editorial/Heron News	5
Parish Lunch Update	5
Christmas with the Cratchits	6
Puzzles	7
Clubs	8
Kids Corner/Elf on the Shelf	9
Recipe/Seasons Greetings ...	13
Robin Redbreast	14
Spot the Christmas Movie	15
PC Snippets	15
Winter Wildlife	16
What's On/A Year on the Farm	17
Phishing Scams	18
What's On at the Dun Cow	20
La Pasada	21
Church/Rectory News	23
Homeless in Wisbech	24
Christmas Number 1s	24
Remembrance Sunday	25
Useful Numbers/Quiz Answers	26
Christening	27
Merry Christmas from the Team	28

Merry Christmas



*Robin sang sweetly; When the days were bright
"Thanks! Thanks for Summer!" He sang with all his might.*

*Robin sang sweetly; In the Autumn Days
"There is fruit for everyone, Let all give praise."*

*In the cold and wintry weather; Still hear his song.
"Someone must sing", said Robin, "Or Winter will seem long."*

*When the Spring came back again; He sang: "I told you so!
Keep on singing through the Winter; It will always go!"*

Anon.

EDITORIAL TEAM:

Editorial Team Leader - Annie Nason

Treasurer, Advertising Manager, Publisher - Elaine Reed-Hughes

Editorial Team Members: Sue Norman, Liz Scott, Jenny Medcalf, Pat Rigby, Elaine Reed-Hughes

Deliveries Manager - Sandra Kay

Support—Lewis Bennett (IT), Sandra Lloyd, the Delivery Team and Printers

ENQUIRIES

editor@theheron.info Tel: 01354 638088

adverts@theheron.info Tel: 01354 638310



Website: www.theheron.info



TOWNLEY SCHOOL AND PRE-SCHOOL

Christchurch, Wisbech, Cambs. PE14 9NA
 office@townley.cambs.sch.uk
 Website: www.townley.cambs.sch.uk
 01354 638229



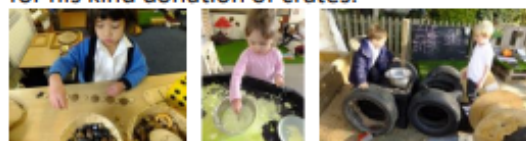
Facebook—Townley School
 and Pre-School

November 2021

Remember that our website has
 lots more information about school.

The children at Townley make me feel proud every day. I explained to Emperor Class that I feel like their school mum -because I want the best for them and endeavour to keep them safe. Before the half term we had 21 cases of covid, this was such a worrying time for everyone but we are all back in school and working hard! Things are not yet quite back to normal, especially as Cambridgeshire has been declared an Enhanced Response Area, one of only three local authority areas nationwide to declare this, so it has meant we have been unable to hold our parent events face to face. Sadly, this will remain until 10th December at the earliest. If you are considering your child starting at Townley, please telephone us to arrange a visit, unfortunately we can only do these after school at the moment. There is a virtual tour on our website also.

EYFS would like to say a big thank you to Michael Pearson for his kind donation of crates.



In Early Years we are very proud of the quality of our interactions with the children and of the fact that our children are so engaged with their learning. Others obviously feel we are doing a good job too because this month we have been filmed by Cambridge International! They asked to film our setting to show teachers in other countries what good practice in Early Years looked like. The film crew were blown away by our children – how engaged they were with their learning, how purposeful their play was, how independent they were and how they helped each other.

In Emerald Class (Years 3 and 4), in Religious Education, our topic is 'What are the special religious texts?'. Last week, we started by thinking about what 'sacred' means and looked at what we consider sacred or not sacred. This week, we have looked at what the Bible is and who wrote it. The children got to look at different Bibles, read Author fact files and answered questions as if in an interview. We reflected on what inspires us. *Did you know that the Bible is the best-selling book in the world!* In English this week, the children have planned their writing by choosing a setting and noting down adverbs, adjectives and key words that they have used to draft their final piece. They have shown that they have a great imagination and I look forward to reading their finished work.

In Science, we have looked at where the skeleton is. We have revised the words 'vertebrates' and 'invertebrates' and learnt that an adult skeleton is made up of 206 bones. We established that the skeleton has three purposes: 1) support us, 2) protect our brain and lungs and 3) enable movement through the joints.

In Emperor Class (Year 5 and 6) we have been looking at Shakespeare's sonnets (a 1-stanza poem, often made of 14 lines, with each line containing 10 syllables) and we compared 'Sonnet 18' to 'Daffodils' by William Wordsworth. In Maths, we worked with square numbers (a number which is made by multiplying a number by itself), cube numbers (a number which is made by multiplying three numbers that are all the same, such as $3 \times 3 \times 3 = 27$). In RE, we have recapped the 5 moral precepts of Buddhism, as well as the 3 Universal Truths, and what it means to be enlightened. For DT, we continued working on making an automata toy and we learnt vocabulary for cam mechanisms, such as cam (various kinds of cam), follower, linear and rotary.



In Hawker Class (Years 1 and 2) children have been learning about animals, including humans. They have learned that there are five different types of animals: mammals, birds, fish, amphibians and reptiles. They have also learned that animals eat different things and can be grouped into three: carnivores, meat eaters; herbivores, plant eaters; and omnivores, meat and plant eaters. They sorted animals into different groups depending on what they eat.

In English we have read "Where the wild things are" and "The Storm Whale" and children wrote a set of instructions. In maths children have been taught about addition and subtraction and different methods to help them with this.



Community Information

Mobile Post Office:

Visits Monday to Thursday in the lay-by on Upwell Road

Monday and Thursday - 16.30 to 17:00

Tuesday and Wednesday - 16.10 to 17:00

Fridays - no service.

ANYONE WISHING THEIR ITEMS TO BE POSTED,
ON THE DAY, WILL NEED TO GET THEIR POST TO THE
VAN BY 4.40PM - WHICH IS WHEN IT IS COLLECTED.

Use it or lose it!

Community Car Scheme:

This scheme is still running for Christchurch and surrounding villages. To book a ride or to become a volunteer driver please ring 07902 316360. An additional driver is still required for the scheme. For more information please ring the number above.

Mobile Library:

**OUR MOBILE LIBRARY COMES ONCE A MONTH,
ON THE FIRST TUESDAY, AT 12 NOON.**

The van parks in the lay-by on Upwell Road, opposite to the entrance of Fen View. **USE IT OR LOSE IT?**

You can use the Select and Collect service online, or by calling 0345 045 5225.

https://cambridgeshire-self.achieveservice.com/service/Select_and_Collect

Please support your local Library Service, right in the heart of your community.



Please remember that no dogs are allowed on the playing field. Thank you. Your co-operation is much appreciated.

Your Letters

Dear Heron,

Seeing the Parkin recipe in the last Heron brought back lots of memories for this Lancashire Lass. Standing round a bonfire, pooling fireworks with neighbours, eating sticky treacle toffee and slices of Parkin. It conjured up all the smells and textures of years ago, so I decided to give it a go! I had not made Parkin since my Domestic Science school days, but the recipe didn't disappoint. Even for a non-baker like me, it worked beautifully "keep it for about 5 days before eating"? No chance! I'll have to make it again and try saving it a while longer.

Thank you, Heron!

From a nostalgic villager (contact details supplied).

Upwell (Cambridge) Consolidated Charities

DOLE DISTRIBUTION IN CHRISTCHURCH

Friday December 3rd 2021

Applicants residing in CHRISTCHURCH to apply at the Christchurch Community Centre between 2-3pm.

The aged and infirm will receive the first consideration.

No able-bodied man or woman under 65 need apply.

ONLY those resident in the Parish for at least five years will be considered.

The Trustees prefer attendees to the dole charity distribution to wear a mask where possible. Further information: Mrs Bliss – 01354 638343.



Advertising in the Heron

Quarter Page (14cm High x 9.5cm Wide)

Portrait Format

6 x issues £50

12 x issues £90

Eighth Page (6.5cm High x 9.5cm Wide)

Landscape Format

6 x issues £34

12 x issues £64

Please contact adverts@theheron.info or phone Elaine on 01354 638310.

Advertisers - all our advert rates and conditions can be found on our website www.theheron.info. Business advertisers can book a series of 6 or 12 adverts, paid in advance. Adverts for village fundraising events, personal announcements, or small private ads are usually free.

Do you know someone who would like to receive a Heron each month, who doesn't live in the village?
Contact us at adverts@theheron.info and we will send them a subscription form.
The cost is £25.00 per year (including P&P).

Copy Deadline - The deadline for copy for the January edition of the Heron is 17 December 2021.

Diary Dates

DATE	EVENT	TIME	PLACE	PAGE
Dec 3 rd	Dole Distribution	2-3pm	CCC	3
Dec 5 th	Welle Cinema: 'EMMA'	1.30 for 2pm	3 Holes Village Hall	22
Dec 7 th	Mobile Library	12 noon	Upwell Rd Lay-by	3
Dec 8 th	Lunch Break	12-2pm	CCC	7
Dec 12 th	Carol Service	3.30pm	Church	23
Dec 13 th	Parish Council Mtg	7.30pm	CCC	15
Dec 14 th	Art Club	1.30-3.30pm	CCC	8
Dec 14 th	WI	7pm	CCC	8
Dec 19 th	Over 65s Parish Lunch drive around the village	1 – 4pm	Village	5
Dec 19 th	Carols by Candlelight	4pm	Outside the Pub	25
Dec 24 th	Christmas Eve Communion	6pm	Church	23
Dec 25 th	Christmas Day Communion	10.30am	WIMBLINGTON CHURCH	23
Jan 2 nd	Holy Communion	10.30am	Church	23
Every Mon	Short Mat Bowls	7-9pm	CCC	26
Every Tues	Pilates	6-6.50pm	CCC	26
Every Wed	Chair-based exercise class	10-10.50am	CCC	26
Every Thurs (not Dec 23 rd)	Coffee, Cake & Chat	2 – 3pm	Church	23
M,T,W,TH	Mobile Post Office	Various	Lay-by (Fen View)	3
ALSO CHECK "What's On?" Page 17 + DUN COW EVENTS Page 20				

At the time of going to press, all information is as accurate and up to date as we can make it.

Changes and updates may be published subsequently. All information contributed by outside agencies, including dates etc., will be assumed to be correct.

NB as a matter of courtesy no content from the Heron should be used without prior permission.

Editorial

I love December. It's a month about looking forward – as Advent Calendars remind us. Of course, many of our articles are reports of events which have already happened, but here in Christchurch, and further afield, there are a lot of nice things to look forward to this year, compared with December 2020. Although Covid is still with us - and will be so for some time to come, doubtless - we can at least get out these days. However, let's not forget that not everyone is happy in December. Why not support a Charity for The Homeless this year? See our article on Page 24. Many folks will find the Christmas season an emotional challenge, because of bereavement or loss. Check out page 23.

I hope you like our feature "Diary Dates", where you can have a look at the whole month and see what it is you would like to do or see. Christmas Carols feature this month - and the theme for the Christmas Tree Festival is also Carols. The Welle Cinema is back up and running again, which many people enjoy.

Here's hoping that we will all have a warm, and warm-hearted, Christmas this year.

MERRY CHRISTMAS!

Annie Nason

Over 65s Parish Lunch - Latest

The Over 65s Parish Lunch Committee will be going around the village, from 1pm till 4pm, on Sunday 19 December - dispensing good cheer and maybe a treat or two - to those villagers or would normally join us at the annual Over 65s lunch. Any new villagers (or partners) who fall in to this category ie. Over 65 and who live in Christchurch, can be included by calling Ruth or Colin on 01354 638419.

If you aren't in, when we call, we will be attending the village 'Carols By Candlelight' at the Dun Cow, from 4pm onwards if you would like to come and collect your "treat".

We will contact those people that we already know about, who live on the outskirts of the village, to make separate arrangements. We look forward to seeing you.

Parish Lunch Committee

Heron News

For The Heron, this December is definitely a **THANK YOU** month:

THANK YOU to all our faithful Heron warriors, without whom this magazine wouldn't come through your door. (See back cover). Did you know that there were so many people involved with The Heron? Deliverers, Committee Members, Support people...

THANK YOU to Christchurch Parish Council, as they have given us enough money in a grant to cover 3 issues of the magazine. £1600! We do other fundraising, but, as you know, it has been almost impossible during the Pandemic.

THANK YOU to our Advertisers. Without you, we couldn't fund the paper version of our magazine. All the best for your businesses in 2022.

THANK YOU to Rex Ockenden, who so kindly gave much of his time to sort, judge and juggle the photos for the 2022 Heron Calendar. He is also funding the prizes. Order your calendars now – they seem to be flying out of the door. (Contact Elaine Reed-Hughes)

THANK YOU to Lewis Bennett, our IT Support person who gives a lot of his time helping out. For free. He knows his stuff, so you would be well served if you find you need to call on him to fix that iPad or Laptop.

THANK YOU to Steve Bailey, of March Stationery and Print, for doing a stellar job for us every month, and also for printing our Calendars. And for very helpful advice along the way.

THANK YOU to people who contribute articles, send letters, give us suggestions for topics....and thank you to anyone we have forgotten to mention.

MERRY CHRISTMAS!



Letters to the Editorial Team

The Editorial team welcome letters from its readers. Please email letters to: editor@heron.info or post them to *The Editor of The Heron, Grasshopper Cottage, 5 Upwell Road, Christchurch, PE14 9LF.*

PLEASE NOTE: Letters will only be considered for publication if they are accompanied by name and contact details - names will be published, but not contact details. The Heron will not share any contact details unless given permission.

The team look forward to hearing from you!



Christmas with the Cratchit family

*From A CHRISTMAS CAROL,
by Charles Dickens*

Ebenezer Scrooge watches with the Ghost of Christmas Present as the Cratchit family sits down to roast goose and Christmas pudding.

His active little crutch was heard upon the floor, and back came Tiny Tim before another word was spoken, escorted by his brother and sister to his stool before the fire; and while Bob, turning up his cuffs — as if, poor fellow, they were capable of being made more shabby — compounded some hot mixture in a jug with gin and lemons, and stirred it round and round and put it on the hob to simmer; Master Peter, and the two ubiquitous young Cratchits went to fetch the goose, with which they soon returned in high procession.

Such a bustle ensued that you might have thought a goose the rarest of all birds; a feathered phenomenon, to which a black swan was a matter of course — and in truth it was something very like it in that house. Mrs Cratchit made the gravy (ready beforehand in a little saucepan) hissing hot; Master Peter mashed the potatoes with incredible vigour; Miss Belinda sweetened up the apple-sauce; Martha dusted the hot plates; Bob took Tiny Tim beside him in a tiny corner at the table; the two young Cratchits set chairs for everybody, not forgetting themselves, and mounting guard upon their posts, crammed spoons into their mouths, lest they should shriek for goose before their turn came to be helped. At last the dishes were set on, and grace was said. It was succeeded by a breathless pause, as Mrs Cratchit, looking slowly all along the carving knife, prepared to plunge it in the breast; but when she did, and when the long expected gush of stuffing issued forth, one murmur of delight arose all round the board and even Tiny Tim, excited by the two young

Cratchits, beat on the table with the handle of his knife, and feebly cried Hurrah!

There never was such a goose. Bob said he didn't believe there ever was such a goose cooked. Its tenderness and flavour, size and cheapness, were the themes of universal admiration. Eked out by apple-sauce and mashed potatoes, it was a sufficient dinner for the whole family; indeed, as Mrs Cratchit said with great delight (surveying one small atom of bone upon the dish), they hadn't ate it all particular, were steeped in sage and onion to the eyebrows! But now, the plates being changed by Miss Belinda, Mrs Cratchit left the room alone — too nervous to bear witness — to take the pudding up and bring it in.

Suppose it should not be done enough! Suppose it should break in turning out! Suppose somebody should have got over the wall of the back-yard, and stolen it, while they were merry with the goose — and supposition at which the two young Cratchits became livid! All sorts of horrors were supposed.

Hallo! A great deal of steam! The pudding was out of the copper. A smell like a washing-day! That was the cloth. A smell like an eating-house and a pastrycook's next door to each other, with a laundress's next door to that! That was the pudding! In half a minute Mrs Cratchit entered — flushed by smiling proudly — with the pudding, like a speckled cannon-ball, so hard and firm, blazing in half of half-a-quarter of ignited brandy, and bedight with Christmas holly stuck into the top.

Oh, a wonderful pudding! Bob Cratchit said, and calmly too, that he regarded it as the greatest success achieved by Mrs Cratchit since their marriage. Mrs Cratchit said that now the weight was off her mind, she would confess she had her doubts about the quantity of flour. Everybody had something to say about it, but nobody said or thought it was at all a small pudding for a large family. It would have been flat heresy to do so. Any Cratchit would have blushed to hint at such a thing.



Christmas cards, letters, and documents with postage stamps on may come though your letterbox. Save used stamps for Royal National Institute of Blind People (RNIB)

Collect used stamps for RNIB and make a difference to blind and partially sighted people. They will recycle them ... into much-needed funds for RNIB services. Be a stamp collector for a good cause. UK and other countries' stamps - all used - old and not so old; in ones, or in groups. **Leave a good bit**

of the envelope round the stamp when cutting it out please. The RNIB will soak them and sort them, but they throw away any which are cut too fine round the edges. *Collect a bunch and then put them through the door of Grasshopper Cottage, 5 Upwell Road, Christchurch. They will be collected and sent off to the RNIB at the end of January.*

And thanks in advance.

BOXING DAY PUZZLERS

Logic Puzzle 1: Five people were eating apples, A finished before B, but behind C. D finished before E, but behind B. What was the finishing order?

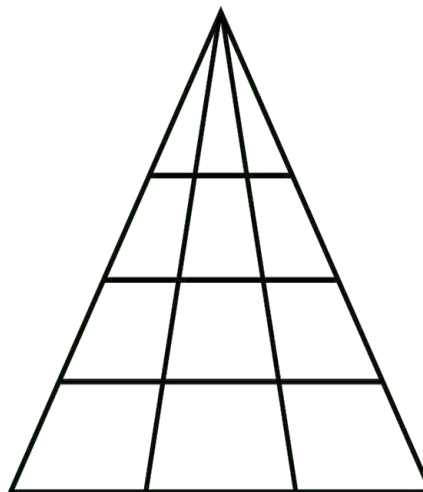
Logic Puzzle 2: Susan and Lisa decided to play tennis against each other. They bet £1 on each game they played. Susan won three bets and Lisa won £5. How many games did they play?

Logic Puzzle 3: A farmer wants to cross a river and take with him a wolf, a goat and a cabbage. He has a boat, but it can only fit himself plus either the wolf, the goat or the cabbage. If the wolf and the goat are alone on one shore, the wolf will eat the goat. If the goat and the cabbage are alone on the shore, the goat will eat the cabbage. How can the farmer bring the wolf, the goat and the cabbage across the river without anything being eaten?

SUDOKU

			5					6
			8	7		3		2
2	7		3				8	1
				3	4	9		
7	9	3		5		6	1	4
		8	7	9				
9	2				3		5	7
5		6		8	7			
3					5			

HOW MANY TRIANGLES?



Point of View



LUNCH BREAK IN DECEMBER

Just one Lunch Break this month – **Wednesday December 8th 2021** from 12

noon – 2pm, in the Community Centre. IT'S FREE!

BYO Lunch. Catch up with old friends, make new ones. Chat over lunch with Tea or Coffee and relax. Or just come for a cuppa.

Always the 2nd and 4th Wednesdays of the month (but not on the 22nd this month). Please note Our Covid plan is to be cautious.

Contact: Annie on 01354-638-088





Christchurch Gardening Club

“Like Them Apples”

In the time that I have been involved with the Gardening Club, I have come to realise, just how much knowledge and information is placed at our disposal, by our fellow members and the experts who regularly turn up to give us the benefit of their experience. This was brought home to me last Monday as I walked across Wisbech Park. In the olden days before Covid shut us all down, during one of our regular Tuesday night meetings on the 16th April 2019, we were fortunate to have as our experts, several members of Wisbech in Bloom. As well as taking us through their regular work in beautifying the town centre at Wisbech they also told us about a current project which was to bring some of the rarer species of English Apples to an Orchard in the centre of Wisbech park. Well, it's up and running and looking great. In a fenced off area of the park adjacent to the footpath there are Apple trees galore, busily growing Kilos of juicy fruit, which I'm sure will made use of by the team. So, if you happen to be in Wisbech have a walk in the park and see the orchard. The club will be starting again very soon, so if you're interested in coming along call 01354638230.

Steve Waye



The WI met on 9th November. This was an Open Meeting and it was great to welcome 20 visitors from other WIs and our local community.

It was a delight to receive a fascinating demonstration from our local florist Caroline McGonagle who showed us how to make a Christmas Wreath and a candle table centrepiece. Even the most unartistic among us were inspired to "have a go"!!!

We are very pleased to have raised £51 in our raffle, which will be sent on to our Community First Responders.

Our next meeting will be held on Tuesday 14th December at 7pm and will be our Annual General Meeting followed by a Christmas Party.

For more information please contact Sheila Day on 07946635908.

Sheila Day



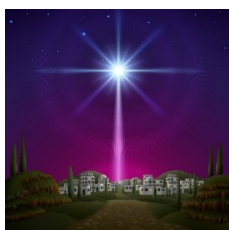
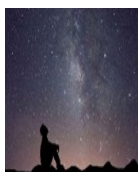
Christchurch Stargazers

The Christmas Star

The story of the Christmas Star in the Bible doesn't mention Three Kings, but 'Magi', possibly astrologers, who left three gifts. There's no mention of the Star being particularly bright, and it doesn't have any significance for anyone other than the Magi. Is there an Astronomical basis for The Star of Bethlehem? Several possible explanations have been put forward over the years. It may have been a Nova or Supernova explosion, or a Comet, but there isn't a lot of evidence in ancient writings for these. It might have been a conjunction of Jupiter and Saturn, perhaps of religious or astrological significance; or, sometimes, Jupiter seems to 'stand still' in the sky, and this may have happened over Bethlehem. However, this is a yearly occurrence, so was not a rare event. A conjunction between Jupiter and Saturn with the bright star, Regulus, might well have had religious and astrological significance.

'Jupiter' in Hebrew means 'Righteousness'; Regulus is Latin for 'Prince', or 'Little King'; Venus was a symbol of 'Love, Fertility and Birth'. As such, the combination of these 3 objects close in the sky could have led the Magi to the interpretation of the 'Birth of the King of Kings'.

(Source – Royal Museums, Greenwich)



Christchurch Art Group



We meet on the 2nd and 4th Tuesday of the month 1.30-3.30 in the Village Hall (term time).

- Our focus is to explore and experiment with the various painting and drawing media
- To enable participants to develop their own style
- Above all to have fun and enjoy the sessions
- The sessions are planned and adjusted to suit, depending on the experience and interests of the group
- The group leader is experienced in a wide range of media, and has some art materials for you to try out if they are new to you. *We have suitable paper for a reasonable cost to purchase and materials can be borrowed until you have your own*. Our group is friendly and relaxed and we love to welcome new folk.



If you would like a programme, please contact Jan and one will be sent with any further information.

Please contact Sandra 01354 638478 or Jan 01354 638217 (janandcliff@brimstone46.plus.com).

*(Please note we may still have to follow 'Covid' rules, so may not be able to offer equipment to borrow. Items can be ordered for use if requested.)

Kids Corner

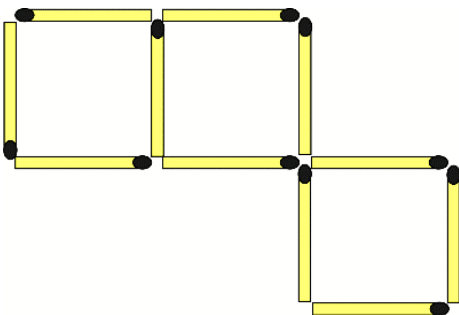
Fancy making some Christmas cards for your family and friends? Copy, photocopy or trace these pictures and colour them in. Then make your card.

RIDDLES...you may find riddles in a Christmas Cracker. Have a go at answering these.



- What has to be broken before you can use it?
- I'm tall when I'm young and I'm short when I'm old. What am I?
- What month of the year has 28 days?
- What is full of holes but still holds water?
- What question can you never answer yes to?

A matchstick puzzle. Move 3 matches to show 2 squares (use them all).



The Elf on a Shelf

There are two rules with the Elf.



- You can't touch the Elf, or it will lose its magic
- The Elf only moves when children are asleep.

'The Elf on a Shelf' is a very new Christmas 'Tradition'. The Elf first made its appearance in the book 'The Elf on a Shelf: A Christmas Tradition', published in 2005. The book was written by Carol Aebersold and her daughter Chanda Bell, and is based on a family tradition that Chanda and her sister Christa had when they were growing up in Georgia, USA. Carol Aebersold had an Elf doll that would 'magically' appear in a different part of the house every morning running up to Christmas. Chanda and Christa were told that the Elf was watching them and it would tell Santa if they'd been naughty. But in the original book, written in 2004, the Elf was sent to watch over Chanda and Christa. I like that idea much better, don't you?



Upwell Computer Repairs

Sales – Repairs - Maintenance - Upgrades

**Sales & Support
Internet Setup
Virus Removal
Tuition
Web Design
Email Setup
System Installations
Data Recovery Services**



**Laptop Screen Replacement
Windows Reinstallation
Hardware Upgrades
Software Upgrades
On-Site Services
Custom Built PC's
Internet Security
Network Installations**

Contact Lewis today for a free consultation

01945 772717 - 07849 778525

support@upwellcomputerrepairs.co.uk - www.upwellcomputerrepairs.co.uk



online playgrounds

Your Complete Outdoor Play Solution

**Design · Manufacture
Install · Maintain · Parts**



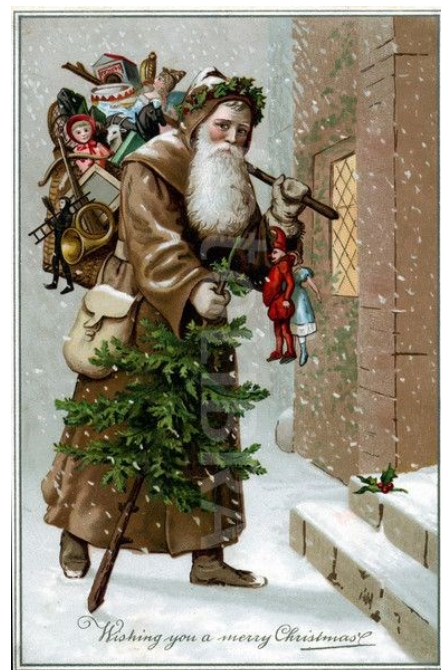
+44 (0) 1354 638 359



sales@onlineplaygrounds.co.uk



onlineplaygrounds.co.uk



The Community Centre Committee

put on their second event since lockdown on 13th November for a Quiz Night at the Community Centre and using the new stage for the first time. This was very well attended, a fish or chicken and chips supper was enjoyed, along with a raffle, whilst 11 teams took up the challenge of the minds. The winners were team *Goombay Dance Band* beating team *Clueless* by just one point. A big thank you to the quizmasters Andy and Sheila Day who, as usual, provided a great quiz, making it a very entertaining evening.



GRANARY STUDIO

Your local picture framer

01354 638614

www.granarystudio.uk

The Granary
Hall Farm, Upwell Road
Christchurch
PE14 9LJ



March Stationery & Print

Booklet Printing
Business Cards
Digital Photos
Leaflets
Newsletters
Banners

01354 656614

sales@marchsp.co.uk
5 Fenland Walk, March, PE15 8TW



LW Vehicle Services Ltd *Car and Commercial Repairs*

- Class 4 and 7 MOT Testing
- Full Diagnostic Service
- HGV Maintenance
- Batteries - Tyres - Exhausts
- Welding and Fabrication
- Timing Belts
- HGV PMI Inspections
- Aircan Service and Repair
- Courtesy Car Available
- All Service and Repairs Undertaken
- Car and Van Sales

Call 01354 610172
Email lwvs@outlook.com
Web lwvehicleservices.com



March Road, Welney, PE14 9SE



Wisbech •FUNERAL SERVICE•

Independent Family Funeral Directors



Funeral Directors James and Laura are proud to be serving the community

Personal, caring & affordable

*Advice without obligation
24 hours a day*



FUNERALS FROM £2,495
Inclusive of all fees

Chapel of Rest
Traditional, Modern & Eco-friendly funerals
Pre-paid & pre-arranged funeral plans

17 Old Market, Wisbech, Cambridgeshire, PE13 1NB

01945 405950 (24hr)

www.wisbechfuneralservice.co.uk

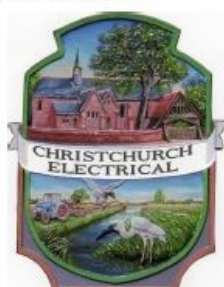
CHRISTCHURCH ELECTRICAL

Simon Freeland Hill Farm, 3 Church
Road, Christchurch, PE14 9PQ

Tel: 01354 638802 Mobile: 07727 046439



Domestic electrical work undertaken.
No job too small.
Free quotations / estimates.



www.electricalcompetentperson.co.uk

www.electricalsafetyregister.com



www.allpestscontrolled.co.uk

WOODWORM

BEDBUGS

MOLES

MICE

RATS

ANTS



SQUIRRELS

RABBITS

WASPS

BIRDS

FLEAS

BEES

Call Danny on

Tel: 01945 772 153

Mob: 07795 073 985



A JONES & SON

TELEVISION SALES/REPAIRS/INSTALLATION

FREE LOCAL DELIVERY

FIRST CLASS AERIAL INSTALLATIONS/ADDITIONAL POINTS

26 March Road, Wimblington, March, Cambs PE15 0RN

Tel: 01354 740320

CLOSED ALL DAY TUESDAYS

FOUR SEASONS TREE SERVICES

Qualified & Professional Tree
and Client Care

PRUNING ● LOPPING ● FELLING

PLANTING ● REDUCING & RESHAPING

CROWN RAISING ● HEDGE TRIMMING

THINNING ● POLLARDING ● STUMP REMOVALS

OVERGROWN GARDENS PUT BACK INTO SHAPE

FRUIT TREES TREATED ● LOG & WOODCHIP SALES

FREE ESTIMATES & ADVICE WITH NO OBLIGATION

For quality jobs at a competitive price call:

Home: 01353 721665 - Mob: 07771 707921

All work carried out to BS 3998 Standard

A genuine family managed business est. for over 30 years - Fully Insured



THE NAME YOU CAN TRUST



This company offers a 7 day cooling off period



645 Services Ltd

For your complete Oil Services

Registered Office: 12/13 The Crescent, Wisbech,
Cambs PE13 1EH – Director: B E Easey
Company Registration Number: 07872493
VAT Number: 126 5422 30

For a competitive oil quote, for delivery
in the village and surrounding area,
(Outwell, Upwell, Tipps End, Welney)
please call 645 Services' local
Representative, Elaine, on 01354
638310 or 07803 178824 or Email:
elaine@645services.co.uk

We will always try and be the best
price around - with local deliveries
scheduled for most weeks throughout
the month.



Celebration Chestnut and Mushroom Wreath (Veggie or Vegan)

I made this up some years ago and now get requested to make it every year! It also makes an alternative to Turkey stuffing.

Ingredients

*One red onion, *2 small peeled sticks celery, *2 bulbs garlic, all chopped. *Assortment of mushrooms - chestnut / oyster/ shitake (I don't measure this accurately but possibly a good handful of each, depending on what is available. Usually more chestnut mushrooms). *Puff pastry, one large block or 2 packs of ready rolled packets, fresh from chiller cabinet, not frozen blocks. *2 packs peeled cooked chestnuts; they are in a shrink wrap pack/or tins... roughly chop them, vary size to add texture. 1 pack or tin chestnut puree (make sure it is not the sweet one). *Breadcrumbs (soft) roughly 2 or 3 slices, you will see how much the mixture needs as you go. *Glass red wine or dry sherry/brandy and veg stock cube dissolved in the wine or just a dash of water. *Dried cranberries/herbs/seasonings to taste (chopped chilli or chilli flakes optional). I put about 1 tbsp cranberries and just 1 tsp chilli. (Lots of thyme parsley and just a little oregano and/or tarragon to taste) Fresh herbs are best if you can get them. Otherwise look for dried.

Method

- Sweat onions etc in oil, add roughly chopped mushrooms, cook moisture off, then add butter for taste (optional), herbs and wine with veg stock cube.
- Add all roughly chopped chestnuts/breadcrumbs/dried cranberries. Check seasoning and mix. The mixture should be able to hold its shape; if too sloppy add some more soft breadcrumbs.
- Roll out circle of pastry; shape a smaller ring of the mixture on top. Cut star in centre of pastry to fold up over the mixture a bit. Cut strips of pastry to overlap, either side of ring, decorate with pastry holly leaves or stars.
- *You can freeze at this point; that is why you need fresh blocks of pastry. Thaw before cooking.* Before baking, egg wash the top. Bake at 175/180 Fan, for approx. 40 mins, depending on size, until golden. (I have decorated the top after baking with a few red currants/cranberries to resemble holly berries). Serve with Cranberry or Red currant sauce.

I have frozen it after baking, but it's more difficult to heat through without it drying out too much. Leftover portions freeze ok.

Suitable for vegans if you leave out the butter and egg wash. Most ready-made pastry is now suitable for vegans.

I tend not to follow recipes myself. I make it up as I go along! Season's Greetings!



Jan Clifford



The following people would like to wish you all a very Merry Christmas and a Happy and Healthy 2022:

Sandra & Brian Kay

Peggy & Graham Warby

Sandra & Richard Lloyd

Wendy & David Yates

Elaine & James (Reed) Hughes

Doris (Wolsey) Rolfe & Family

Robin Redbreast

There are quite a few legends surrounding robins and their relation to Christmas and winter as a whole. For example, have you ever wondered why we see depictions of robins on everything from cards and wrapping paper, to Christmas jumpers and biscuit tins? The first legend takes us back to Victorian times, where the tradition of sending Christmas cards started. Royal Mail postmen, who wore bright red uniforms, delivered these cards. This earned them the nickname of 'robin' or 'redbreast'. Artists usually illustrated Christmas cards with pictures relating to the delivery of letters, such as post-boxes or the postmen known as 'robins', and eventually started drawing the familiar little brown and red bird delivering letters instead of the postmen. This trend caught on and became very popular, and continues to this day, with many robin-themed items being seen on supermarket shelves during the festive period.

Before the Victorian associations of robins with Christmas however, they already had quite a strong link with the traditional Christmas story and Christianity. In one tale, it is said that when Mary was giving birth to baby Jesus in the stable, she noticed that the fire that they had lit to stay warm and comfortable was in danger of going out. Suddenly, a small brown bird appeared and started flapping its wings in front of the fire, causing it to roar back to life. However, as the bird flew around tending to the fire, a stray ember made its way towards the bird, scorching its breast bright red. Seeing this, Mary declared that

the red breast was a sign of the bird's kind heart, which would pass on to its descendants to wear proudly forevermore.



The last tale links back to old Celtic-based traditions and tells of the feud between the Holly King of Winter (a wren) and the Oak King of Summer (a robin). The story tells of the Holly King being driven away and having his place taken by the Oak King on the Winter Solstice. However, on the Summer Solstice, the Holly King gets his revenge, and takes the place of the Oak King. This is said to happen every year to represent the changing of the seasons. While this does not have specific links to Christmas itself, it is an interesting tale, which seems to allude as to why we see more robins during the winter months. (Taken from Scottish Wildlife Trust)

DID YOU KNOW?

Robin tops poll to find UK's 'national bird'

There was a fashion in England in the 15th Century for giving species human names, so the fox was Tod Lowry, the wren was Jenny Wren, donkeys were Jack and Jenny, goats were Billy and Nanny and so on. The bird called a Redbreast became Robin Redbreast. Other older English names for the bird include Ruddock and Robinet.

"I think sometimes we need to take a step back and just remember we have no greater right to be here than any other animal".

~ David Attenborough ~



Painting by Wendy Andrew

CHRISTMAS TO-DO-LIST

- ~~BE~~ ~~buy~~ presents
- ~~wrap~~ ~~gifts~~ ~~SOMEONE~~ IN A HUG
- ~~Send~~ ~~gifts~~ PEACE
- ~~DONATE~~ ~~shop~~ for food
- ~~BE~~ ~~See~~ the lights

Can you spot 25 Christmas Movies from the picture below?



Answers on Page 26

FESTIVE PC SNIPPETS

Well. Other articles are festive, so I thought the PC Snippets should get in the seasonal mood. At the November meeting there was a lot of discussion about a wide range of things. Sing along with this precis.

Annie Nason

*Jingle bells, jingle bells, jingle all the way.
Oh what fun it is to be at Council meetings here – Hey!
Jingle bells, jingle bells, jingle all the way.
Oh what fun it is to be at the PC meet today!*

Dashing through the list
Of things ongoing still,
Street lights, drains and trees
To cut, and pay some bills.
Folks fearful going out
Because of Covid fears
Fenland Council Boundary changes -
Not as it appears! - Hey

Jingle bells....

The Annual Report will come
Through all our doors in time.
Police are very busy
Policing protests (fine!)

Some are chasing down
Hare Coursers, which is great.
They're soon to look at parking at
And near to all school gates – Hey!

Jingle bells....

There's no map of drains
So repairers cannot cope.
The PC has complained
And want one done – they hope!
The finance seems ok;
The budget needs a plan.
The Heron gets a good-sized grant
We thank you to a man (and woman) – Hey!

Jingle bells....





Some of our wonderful Winter Wildlife

(Taken from a Countryfile article)

Even in the deepest depths of winter there is life to be found in the British countryside, from bright-white mountain hares, and starling murmurations, to red squirrels, foxes and owls.

Starling Murmurations

*The starlings flying over Brighton's Old Pier at sunset/
Credit: Philip Reeve*

Bolstered by winter migrants from Scandinavia and Germany, Britain's starlings congregate in their thousands at fairly predictable winter roosting sites – usually marshes or reedbeds but also man-made structures – throughout the coldest months of the year.

But before they settle down for the night, they often perform great swirling sky-dances, their sheer numbers creating thrilling images in the late afternoon sky. Finally, just before dusk, the flocks pour into the reedbed and begin to settle down – though their chattering can be like the sound of a distant steam train.

What is a murmuration and why do they happen?

It's been called the greatest wildlife spectacle in Britain and is remarkable to witness. Studies suggest that starlings congregate in these remarkable 'murmurations' to deter possible predators, which are confused by the swirling masses. Despite a recent drop in their overall population, you can still witness the mesmerising sight of thousands of birds performing their aerial dance at dawn and dusk.

It's thought that the sky-dance – or murmuration – could be a means of confusing predators who gather to take advantage of what looks like easy pickings as well as jostling for the best roosting position. And ornithologists believe that the reason why the birds gather is to share information about where best to go foraging the following day.

When is the best time to see starling murmurations?

From November to March – better chance of seeing when it's colder.

Twit-twooing tawny owl

The hooting of tawny owls enlivens winter nights/Credit: Nick Hurst

The most endearing sound undoubtedly is vocalised by tawny owls, as the soothing twit-twoo is a familiar sound associated with an early morning walk. More charming is the call and response method of this mating call to seek out a mate for life, with the male tawny owl releasing a 'twit,' and the female answering with 'twoo.'

In spite of the nocturnal nature of these animals, fortunately they are noisiest in December, which increases the chances of them being heard in daylight on a Christmas family countryside outing, most especially near dawn and dusk.



Laughing green woodpecker

*Listen for the laughing call – or 'yaffle' – of the green woodpecker/
Credit: Gerard Soury*

In comparison to the soothing sound of an owl hoot, the shrill pecking of a woodpecker on dead wood is a very different mating call heard during the winter season.

The green woodpecker is the largest of the three breeds that habitat in Britain, and feed mostly on the ground which improves the chance of spotting them on a family festive wander through woodland or parks.

Their noisiest period is generally January and February, and they habitat in wooded areas, nesting in trees. Alongside hammering into deadwood, the laughing call of this bird can be heard during this season.

A YEAR ON THE FARM – DECEMBER

At the time of writing, the swans have arrived on the fields, gleaning any remains left behind the sugar beet/potato harvesters. According to the weather forecast for the week ahead, winter is on its way, hopefully not too harsh. Autumn has been very kind to us farmers this year, warm and little rain. 90% of all winter barley, wheat and beans etc have been drilled so far, with the early crops having to be sprayed for aphids due to the warm weather. 99% of this season's potato crop has been harvested and stored - so far, so good!! There appears to be a potato shortage in Europe. Prices are still strong for the UK crop. Sugar beet harvesting is now under way with yields completely opposite to last year, sugar content is running at 17%, but with prices ridiculously lower to the grower. 15 years ago, prices to the farmer were £39 per ton, today's price from £22 to £25 per ton. With inflation it costs the farmer £19:20 per ton to grow, so very little profit is made from growing this crop. Recent inflation figures show our costs have risen by 25%, this is the highest increase on record. These costs have not yet been passed on to the public.

Will we as the farmer/producer have to carry the cost? 10-20% of vegetable growers particularly in Lincolnshire, will not be planting their land in 2022 because they are losing big money and also the lack of labour. In the last 15 years the price of food has gone up by 42%, farm inputs have gone up by 121% ---as you can see, this is not sustainable. We have a local farm sale coming up in the area, which back in the day employed over 30 men on over 5000 acres - does this tell us something?

Governmental trade deals with New Zealand and Australia show the willingness of the U.K. government to undermine UK farmers prices and food security. Remember the food rationing during the war? Global food transport prices are rising at a pace, which all comes into the equation. All in all, there are painful times ahead for farmers and public alike.

As this concludes my articles for 2021, I close, wishing everyone a Happy Christmas and a Healthy (Covid-19 free) 2022.

Jill Bliss.

The Heron Team would like to say a big thank you to Jill for her monthly articles over 2021. They have been most interesting, and have given us all a small insight into some of the joys and challenges experienced by local farmers. All the best to all of you for 2022 from all of us.



What's on in December 2021

4, 5, 11, 12 then 18-24 December 2021 Santa's Grotto at Skylark
Skylark Garden Centre, Manea Road PE15 0PE Book tickets for Santa's Grotto.

Santa's Toy Shop, Santa's Sleigh, Make a Bear, Gingerbread decorating
Tel: 01354 741 212 info@skylarkgardencentre.co.uk

5 December 2021 Sunday 10-2 Farmers Market & Craft Fayre
Marshland Hall & Tearoom, Marshland St James PE14 8JB

5 December 2021 Sunday 2pm-4pm Christmas Treats Fayre
Murrow Village Hall, 19 Murrow Bank, Wisbech St Mary PE13 4HB

Wreaths, Homemade Cakes, Bespoke Crafts, Gin Gifts & more
11 December 2021 Saturday 7.00pm Gilbert & Sullivan Society

Christmas Concert at Upwell Methodist Church 94 Town St, Upwell
PE14 9DQ Tickets £8.00 including refreshments. Contact Diana Burling 01945 773550

11 December 2021 Saturday 8pm –midnight Christmas Dance
Upwell Hall PE14 9AB In aid of Kings Lynn Critical Care Ward
Dancing to BARSIX sausage and chip supper, Bar Open £15 per ticket
Ticket only event Tel Ros 01945 773604. Nigel 01945 738022

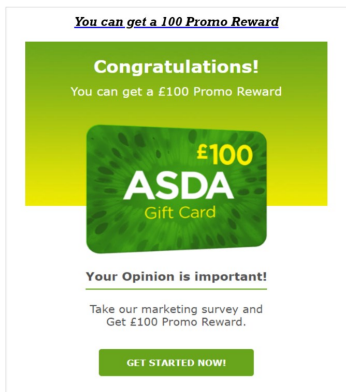
12 December 2021 Sunday 2pm-5pm Manea Gala Christmas Fayre
Manea Village Hall, School Lane PE15 0BF Stalls, Games, Santa's Grotto
Village Christmas Lights switch on 5.30pm





CAMBRIDGESHIRE AND PETERBOROUGH AGAINST SCAMS PARTNERSHIP

Warning to all emailers! Emails impersonating UK supermarkets and high street stores



Fake marketing surveys promising gift cards of up to £100 for filling them out have been impersonating the likes of ASDA, Morrisons and Tesco. Fraudsters have been posing as these well-known supermarkets in order to gain your trust and send you on to potentially dangerous websites.

As is often the case, the phishing email is promising big rewards for doing very little – for example, 'Primark Rewards' are in the form of a gift card for £1,384 - saying that you need to 'activate the delivery' in order to receive them. But clicking through on scam emails like these is only likely to send you on to potentially dangerous websites that could compromise your personal information and/or bank details. The email even attempts to deceive you by including 'your account information',

which may appear legitimate at first glance, but on closer inspection only contains information that's part of your email address.

"Which" has produced a couple of useful guides about spotting scams and how to try to get your money back:

Think you may have lost money to a scam email? Let your bank know what's happened immediately, the sooner the better.

****You can forward phishing emails to report@phishing.gov.uk. Tesco has its own dedicated email, so you could forward the phishing email to it as well.**

WhatsAppers watch out!

A grandfather has told of how he lost money saved for Christmas presents after his family were duped by fraudsters on WhatsApp.

The 75-year-old, who wished to remain anonymous, said they had been tricked by criminals posing as his grand-daughter on the messaging service.

He transferred £1,550 to the con-artists, for an emergency medical bill that was a fake.

WhatsApp and trading standards officers are warning others of the scam.

FACEBOOK (META) PHISHING FOR CLUES ... DON'T BE SUCKED IN!

Think twice next time you take a Facebook quiz - here's why.

What's the harm, you ask? A seemingly amusing quiz that reveals what TV show character you are, or tests how well you know a friend, may actually have dire consequences. Popular Facebook quizzes often ask users to answer a series of personal questions ranging from the name of their first pet, their mother's maiden name, or what town they grew up in.

The posts usually list common questions which entail personal answers – this information is then used by the hackers to break into various accounts. These answers are often people's passwords and questions are similar, if not identical, to security questions asked by banks and other institutions. The simple answer is - never provide personal or financial information including passwords, to anyone you don't know and trust.

Experts say it's ok to take part in Facebook quizzes, but warn users to be cautious about what personal information they give away. You also need to be wary if you come across a social media post, claiming that you have been selected to receive or have the chance to win a prize, even if it claims to be from a well-known company as these are often used to obtain information from you, in the same way (see Asda example above).

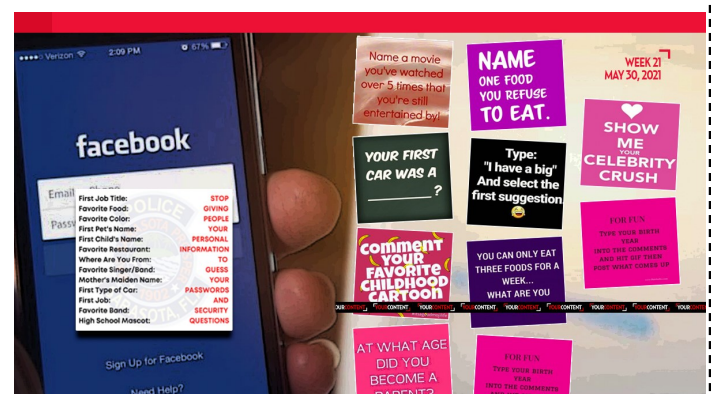
What is phishing?

Phishing scams are an attempt to gather your personal information such as bank account numbers, passwords and credit card numbers.

That is why Facebook scams are easily mistaken – the quizzes may appear like any other post but as with many legitimate offers and online posts, you might be asked to complete a survey or pass on an offer to others before you can claim the prize. After completing a quiz or survey, you may also be prompted to provide personal information such as your phone number, address and bank account details - you may even receive a fake gift voucher or receive nothing at all.

How can I avoid social media scams?

It is advised that social media users verify the webpage the quiz originated, be alert to unsolicited offers, avoid clicking suspicious links and to take your time when considering what information to provide. While some offers may be legitimate, often they are scams and can be very difficult to identify – it's always best to check each time. Always check whether an offer is genuine, even those passed on from people you know ... don't rely on links or phone numbers appearing in an offer, these can direct you to fake websites or download malware. Quite simply, don't be rushed into handing over your personal information.



P R PARKER

Established 1978

General Building and Maintenance

Carpentry Glazing
Plumbing Painting
Plastering Decorating
Bricklaying Rendering
Roofing Guttering
Refurbishment
& Renovation

01354 638380

FREE ESTIMATES

All types ~ Houses ~ Flats ~ Shops ~ Offices



Qualified Seamstress

All dressmaking and sewing jobs undertaken. Alterations to clothing and curtains.

**Please contact: Sandra Kay
on 01354 638478**



caters for all occasions
music from the 70s to 2000s

M & K Roadshow

Martin
Mobile Dj

Keith 01354 638615
07479943870
turbo.bruce586@gmail.com

A.R. CLINGO

FUNERAL DIRECTOR

**Family Independant
Business**

**Private Chapel of Rest
Personal Attention**

24 Hour Service

Full estimates given at all times

Golden Charter
Funeral Plans



Pinfold House
St. Peter's Road
Upwell, Wisbech
Phone 01945 772502

Friday Night Curry Club

For a truly tasty, authentic and traditional Indian meal - which is also healthy and vegetarian - why not try the *Friday Night Curry Club*.

Adult menu: 2 different curries each week, 2 chapatis and rice – £10

Children's menu: Stuffed chapati, vegetable/pulses and rice - £7

Each week we will feature a different set of dishes. **For a full menu** and more information please phone **07775 336727** or **Email: vyasfoods@outlook.com**

Please place your order by Wednesday 7pm for your Friday Curry.

Vyas Foods

 **Instagram**
@vyasfoods



The true taste of India

Russell's Family Butchers

Family butchers for 5 generations. All of our meat and poultry is fresh free range from our own farm.

Visit us at our shop in Upwell or at our market stall in March (Saturdays) or Wisbech (Thursdays and Saturdays).

**97 School Road, Upwell, PE15 9EW
Tel: 01945 773419**

REVERSE ADVENT CALENDAR

EACH DAY ADD AN ITEM TO A BOX.
ON CHRISTMAS EVE DONATE THE CONTENTS TO A
FOOD BANK.

December 1 - box of cereal
December 2 - peanut butter
December 3 - stuffing mix
December 4 - boxed potatoes
December 5 - macaroni and cheese
December 6 - canned fruit
December 7 - canned tomatoes
December 8 - canned tuna
December 9 - dessert mix
December 10 - jar of applesauce
December 11 - canned sweet potatoes
December 12 - cranberry sauce
December 13 - canned beans
December 14 - box of crackers
December 15 - package of rice
December 16 - package of oatmeal
December 17 - package pasta
December 18 - spaghetti sauce
December 19 - chicken noodle soup
December 20 - tomato soup
December 21 - can corn
December 22 - can mixed vegetables
December 23 - can carrots
December 24 - can green beans

PASSIONATEPENNYPINCHER.COM

Checkout what's on
at the Dun Cow!

See staff inside for
details of forthcoming
events.



The Dun Cow



Green Lane, Christchurch, PE14 9PG
01354 638323

OPENING HOURS:

Mon-Thur 4.00 pm – 10.00 pm
Fri 3.00 pm – 11.00 pm
Sat Midday – 11.00 pm, Sun Midday – 9.00 pm

MONDAY FOOD

9.30 am till 11.00 am - Cooked breakfasts.

FRIDAY FOOD

4.30 pm till 8.00 pm - Phone to book your timed slot.

SATURDAY FOOD

4.30 pm till 9.00 pm -
A range of freshly cooked pizzas to eat in or takeaway.

Christmas Raffle - £1 per square
(Winners drawn on 23rd December)

Guess What's In the Handbag!
Charity Fundraiser - £10 per guess
Win £250+ worth of prizes
(Winner drawn on Christmas Eve)

Sunday 19 December 4pm
Carols By Candlelight

December Opening Hours:
Christmas Day - 11.00am - 3.00pm
Boxing Day - 12.00pm - 7.00pm
New Year's Eve - 3.00pm till Late
(£5 per ticket - to include Buffet - limited numbers)
New Year's Day - 2.00pm - 8.00pm

SUPPORT WORKERS YOU CAN TRUST



"PEOPLE WERE VERY POSITIVE ABOUT THE KINDNESS AND RELIABILITY OF THE 'STAFF' - CQC"

- PERSONAL CARE • POST HOSPITAL CARE • DEMENTIA PATIENT CARE • PHYSICAL DISABILITY SUPPORT
- SHORT AND LONG TERM CARE • COMPANIONSHIP
- REHABILITATION

CONTACT US TODAY TO SEE HOW WE CAN HELP
T: 01945 773861 A: 130 WISBECH ROAD, OUTWELL, PE14 8PF
E: ADMIN@PUREHEARTHOMECARE.CO.UK W: WWW.PUREHEARTHOMECARE.CO.UK

Care at home... because home is where the heart is



La Pasada in Christchurch this Advent is going to be a VIRTUAL event, which anyone can be part of...

You may remember (pre-Covid), in Christchurch, the figures of Pregnant Mary riding on a donkey, led by a very tired-looking Joseph, travelling and trying to find a place to stay for the night on their way to Bethlehem. During Advent, these figures were passed from home to home of people interested to take part. Whilst the Holy Family rested for the night in their home, prayers were said, or thoughts offered up, for today's homeless people and for refugees.

This year, Christchurch Parish Church invites you to take part virtually. All you need to do is email, call or message Annie Nason to say which date you would like to book the family for. (Contact details below). She will then contact you on your chosen day, with a photo of the Holy Family, and a prayer which you may like to use as you think about homeless people and refugees.

YOU DON'T DO THE INTERNET? *Never mind.* You can still take part, as she will get an A4 piece of paper with picture and the prayer to you. Just call her to book a date. (Leave a message if she isn't in). Dates available from ADVENT SUNDAY November 28th this year until Christmas Eve.

(And as it's virtual, dates can be double booked, of course). Choose your date.

Annie's contact details: Facebook Messenger; annie_nason@yahoo.com tel 01354-638-088

STOVELINER

**INSTALLATION OF MULTI FUEL
WOOD BURNING STOVES.
SERVICE & MAINTENANCE.
FULLY INSURED.
HETAS CERTIFIED.**



**COVERING CAMBRIDGESHIRE, NORFOLK,
SUFFOLK, BEDFORDSHIRE, HERTFORDSHIRE,
ESSEX AND LONDON.**

STOVELINER@OUTLOOK.COM

07940 001 830

FIND US ON SOCIAL @STOVELINER

Beauty Treatments By Jane

N.V.Q. – i.b.d. – Babtac

**LCN Microdermabrasion Facials
NEW Oxygen regeneration Facials - less
outlay than Botox (a celebrity favourite)
NEW - Non-surgical firming lift and tone
St.Tropez Spray tanning
Gel pedicures
Shellac manicures
Week-end & semi permanent
eyelashes**

**Rose Cottage,
Christchurch
Telephone: 01354 638378**

Outwell Timber

For all your Timber and Building Supplies

**ISLE ROAD, OUTWELL
PE14 8TD**

Tel: 01945 77 21 16

**FENCING, PANELS, TRELLIS
TIMBER, PLYWOOD, DECKING**

SAND, BALLAST, GRAVEL

SCREWS, NAILS, BOLTS

PAINT, SILICONE, HAND TOOLS

**LOCKS, ELECTRICALS, PLUMBING,
GUTTERING**

UNDERGROUND PIPE & FITTINGS

CEMENT, MULTIFINISH, PLASTERBOARD

WELLE CINEMA Sunday 5th December Three Holes Village Hall

**Starts 2 pm, doors open 1.30pm
£3.50 per person, no need to book**

EMMA

(PG)

Based on Jane Austen's 1815 novel of the same name, the film follows the story of Miss Emma Woodhouse (Anya Taylor-Joy), a wealthy and elegant young woman living with her father in Regency-era England. Something of a 'queen bee' in her sleepy little town, Emma amuses herself with matchmaking and meddles in the romantic lives of those closest to her. Emma must navigate her way through the challenges of growing up, friendship, strife and misguided matches before she can recognise the love that has been there all along and earn her 'happily ever after'.

BAR & REFRESHMENTS

**Contact Anne
01354 638405**

***creative
ARTS EAST**

www.threeholesvillagehall00.org.uk

Church News

During December we will be continuing to observe social distancing within the church building and strongly encourage mask wearing.

12th December 15:30 - Carol Service
24th December 18:00 - Holy Communion.
25th December 10:30 - Holy Communion, Wimblington
2nd January 10:30 - Holy Communion.

Coffee, Cake and Chat will continue every Thursday throughout December (BUT NOT December 23rd) from 2pm - 3pm in the church.

Complementary to the live services, throughout December we will continue to host a weekly Sunday service on Zoom for those that can access it and also by telephone for those that don't have a phone that supports Zoom. This will be from 11 until about 11:45, details for access can be obtained from Sheila Day on 07946 635908 or via Facebook messenger. See the church noticeboard or the updates on the Christchurch Community Facebook page for any further news.



Thoughts from the Rectory

No 'Noel'? No way!

More than twenty-five years ago, when I was a humble Lieutenant in 'The Salvation Army' stationed on a rough council housing estate in Cumbria (long before the concept of political correctness was invented), I was asked to organise a meeting at the council office with a group of Christian musicians who wanted to share their faith in the Carol Concert. I had been asked to lead the event at the town's Concert Hall, and over a five hundred people were expected to attend and join in the Carol singing. But from the local authority, the invitation came with conditions. There were to be no prayers, no Bible readings, no 'Pause for Thought'. The council that owned the concert hall did not wish to offend any nonbelievers - who, of their own free choice, would be present at the Christmas carol concert!



Ten years later, at my first incumbency, which was in London, the grandfather of a boy who attended my church told me that, with the help of a few friends, he had offered to play Christmas Carols for the children at his grandchild's school. For a time, the grandfather heard nothing, but eventually received a reply. Christmas Carols would not be welcome, because the authorities at the school did not want to offend anyone! Yet this was a school that I regularly was invited to lead their assemblies!

Why are some people seemingly so afraid of Christmas Carols? We may have well reached a point in our witness in our communities when we will have to reclaim Christmas Carols from the Politically Correct Brigade. Carols are the songs of the Christian faith. They teach us the story of Christmas. Carols are part of our cultural heritage; Carols teach us the story of the nativity and help us apply the deeper truths of Christ's coming into the world - His coming into OUR world. Surrounded as we are by the seasonal trappings, there is no better way to celebrate the coming of the Saviour of the World than by singing about it.

Covid or no Covid, mask or no mask, let us sing His praise this Christmas and give Him the glory. 'Noel, noel'. Keep well, keep safe and have a great Christmas.



Ian.

Are you struggling with bereavement? You may like to pray this prayer.

Sometimes: by Rev Tom Gordon

Sometimes I need strength – because the next step seems so hard.

Give me the purpose to go on when I feel weary with trying.

Sometimes I lack patience – when progress feels so slow.

Give me what's needed for the future even when it's hard to contemplate.

Sometimes I've got no courage – when problems are all I see ahead.

Give me the will to go on and believe an easier path may be just round the corner.

Sometimes I don't have enough insight – to trust the

promise that it will come right.

Give me the wisdom to know that those who love and care will not abandon me when times are hard.

Sometimes I need faith – When I do not know what to believe.

Give me the openness to see something in the mystery to keep me going

Sometimes hope seems to have abandoned me – the hope I need to keep on going and know it won't be in vain.

Give me hope when I feel hopeless so I don't feel overwhelmed any more.

Sometimes I've got too much time – and I don't know whether to remember and be sad or remember and be thankful.

Give me the right time with my memories, and with those memories to grieve, and with those memories to smile.



HOMELESS IN WISBECH AT CHRISTMAS

Christmas is traditionally a time when caring people focus on meeting the needs of Rough Sleepers and the Homeless in our society. 50/50 Vision (was 50 Backpacks) is one group which does this all year round, and could do with our support. Here is a bit of background information from a Wisbech Standard News edition in March 2021.

"50 BACKPACKS founder confident new venture will breed success".

A man who has helped support homeless people in Wisbech and surrounding areas is confident his new venture will continue helping those in crisis.

Simon Crowson, known as 'Spike' will launch '50/50 Vision' in partnership with the Salvation Army, having closed his previous organisation, 50 Backpacks in February 2021. Mr Crowson said: "Discussions started after 50 Backpacks closed. They approached me and said the town really needs this, so they asked if they could do something with me." 50/50 Vision will serve food and essential items to rough sleepers and homeless people six nights a week at the Salvation Army's Wisbech branch on John Thompson Road.

Here is what Spike had to say in October 2021, in response to negative comments about homeless people on his Social Media account:

"There has been lots of news recently involving the rough sleepers in Wisbech and I have read many negative comments directed at them. Because of this I would like to point out a few things to those that are not in the know. It's extremely difficult to get a legal job without a proof of address. Many can't receive a benefit because either they do not have settled status or they are still awaiting completion (huge backlogs). Lots of them are capable of working and want to, but can't because the system does not allow them to. They are constantly pushed from pillar to post and seen as outcasts in our judgemental society. This impacts massively on mental health, and along with their situation and very cold nights, some (not all) will turn to drugs or drink to mask the pain. If a dog is seen wondering the streets it is picked up, given shelter and cared for. Without benefits the homeless cannot claim housing benefit, ruling out some local hostels that charge over £360 per week for a single supported room (paid via housing benefit). Without a form of income, councils are unable to help most off the streets into permanent homes because of legislations and the requirements. They also have to be able to prove affordability (either paying themselves or benefits). Many have to use public places as toilets because there are no free public toilets which they can use in Wisbech. Many are constantly moved on from places they camp so they end up all over the place and are difficult to monitor, in many public or private places. A quick (but not ideal) solution would be for the council to give a small piece of land for an official camp with facilities for washing and a toilet, where they can be monitored and supported, but this will probably never happen. Every November the government completes an official rough-sleeping count and a large camp of 20+ (there are more than 20 rough sleeping in Wisbech tonight) would push the figures up. These human beings are lost in the system and it doesn't look like the situation will improve any time soon. Kindness goes a very long way in these people's lives and just a smile from a passer-by can change their whole day."



Our local contact is Sharon Pomeroy. Sharonapomeroy@yahoo.co.uk 07837 407536. She says:

"Thank you to those who have donated to us. We always need sleeping bags, tents, hoodies and coats at this time of year. Also, tracksuit bottoms and shoes/boots. Any personal hygiene products are good. We get a lot of food donated so we manage to provide a hot meal for many homeless people 6 days a week".



Christmas Number 1's: 1970-1980

1970 I hear you knocking	Dave Edmunds
1971 Ernie (the fastest milkman in the West)	Benny Hill
1972 Long haired lover from Liverpool	Jimmy Osmond
1973 Merry Christmas everybody	Slade
1974 Lonely this Christmas	Mud
1975 Bohemian rhapsody	Queen
1976 When a child is born	Johnny Mathis
1977 Mull of Kintyre	Wings
1978 Mary's boy child – oh my Lord	Boney M
1979 Another brick in the wall	Pink Floyd
1980 There's no one quite like Grandma	St Winifred's School Choir

Christchurch Book Club



Book Club met on 23 November. We had been reading "Northern Lights" by Phillip Pullman, the first in the Northern Lights Trilogy. It is set in a universe just like ours but different in many ways.

The trilogy came third in the 2003 'Big Read' competition to find the nations favourite book.

Our members mostly enjoyed the book and some were tempted to read the other books in the trilogy.

Our next meeting is on Tuesday 18 January 2022 at Elaine's house (40 Church Road) at 7.30pm when we will be discussing the next book - "Once Upon A River" by Diane Setterfield.



Sadly, due to lack of interest in the club and workshops and, more importantly, lack of support with running the club or people willing to join the committee, we have had to make the unfortunate decision to close for the time being. We may readdress the situation in the New Year, should people come forward to help, but for now we will be closing until further notice.

We would like to thank those people who have supported us over the years and reiterate how sad we are that we have had to make this decision.

Craft Club Committee



The Real Meaning of Christmas



We will be having 'Carols by Candlelight' outside the Dun Cow pub at 16.00 on Sunday 19th December, followed by mulled wine and mince pies. Please come and join us! Everybody welcome!

KING SIZE BED



Remembrance Sunday

Over 40 people of all ages attended our Act of Remembrance this year, including our Christchurch Brownies, who laid a wreath at the War Memorial.

You may never have noticed in the Community Centre Hall, the black and white photo of the Church, taken in c1905. Next time you are in the hall, seek it out. How poignant to see the churchyard with no War Memorial.

Thank you to Graham Chappell drawing this to the attention of The Heron.

Photos: Andy Lansdell



Useful Telephone Numbers

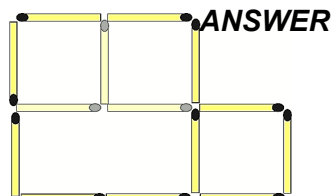
Age UK Cambridgeshire	0300 666 9860
Alzheimer's Society (Fenland)	01945 580480
Churchwarden - Mr Andy Day	07740 056563
Citizens' Advice Bureau, Wisbech	03442 451292
Community Car Scheme (to book a journey)	07902 316360
Community Centre Bookings (Bryan Burfield)	07918 664402
Community Fire Safety Officer	07717 858166
District Councillor - Will Sutton	01354 638025
District Councillor - Michelle Tanfield	07908 707129
Electricity Faults - UK Power Networks	105
FACT	01354 661234
Fenland District Council	01354 654321
Floodline	0845 988 1188
Library - March	0354 045 5225
National Debtline	0808 808 4000
NHS	111
Norfolk Dial-a-Ride	01553 770310
Parish Clerk - David Gibbs	07932 191050
Parish Councillor - Jill Bliss	01354 638343
Parish Councillor - Sharon Pomeroy	07837 407536
Parish Councillor - Roger Gladwin	01354 638538
Parish Councillor - Geoff Harper	01354 638681
Parish Councillor - James Hughes	01354 638310
Parish Councillor - Peter Owen (Chair)	01354 638847
Parish Councillor - Kay Miller	01354 638232
Police - PCSO Sue Clarke	07738 025220
Police - Emergency	999
Police - Non Emergency	101
Telephone Preference Service	0345 070 0707
Townley School	01354 638229
Trading Standards	03454 040506
Train Information	03457 484950
Upwell Health Centre (and out of hours)	01945 773671
Upwell Health Centre - Pharmacy	01945 774934
Veterinary Centre - The Crossings (D'Mkt)	01366 382219
Vicars - Ian & Lynda Brady	01354 740627
Water Emergencies	03457 145145
Club Contacts	
Art Club - Jan Clifford	01354 638217
Book Club - Sheila Day	07946 635908
Craft Club - Sandra Lloyd	01354 638956
Gardening Club - Marion Hawthorn	01354 638230
Short Mat Bowls Club - Janet Harper	01354 638681
WI - Sheila Day	07946 635908
Jazz Club - Nigel Smith	01945 773121
Christchurch Eco - Nate Lansdell	07568 192940
Christchurch Stargazers - Mark Andrews	07425 165415

Answers from Kids Corner on Page 9

RIDDLES

1. An egg
2. A candle
3. All of them!
4. A sponge
5. "Are you asleep?"

MATCHSTICK PUZZLE



Answers to the 25 movies in the picture on page 15.

1. Elf
2. The Santa Clause
3. The Muppet Christmas Carol
4. Merry Christmas Mr. Lawrence
5. Batman Returns
6. Trading Places
7. Home Alone
8. Bad Santa
9. A Christmas Story
10. A Charlie Brown Christmas
11. Jingle All The Way
12. National Lampoon's Christmas Vacation
13. Scrooged
14. Miracle On 34th Street
15. Gremlins
16. Polar Express
17. Edward Scissorhands
18. Love Actually
19. Die Hard
20. Brazil
21. Ghostbusters 2
22. It's A Wonderful Life
23. The Grinch
24. Arthur Christmas
25. The Nightmare Before Christmas

BOXING DAY PUZZLER ANSWERS FROM PAGE 7

Logic puzzle 1. Answer: CABDE. Putting the first three in order, A finished in front of B but behind C, so CAB. Then, we know D finished before E but behind B, so CABDE.

Logic puzzle 2. Answer: Eleven. Because Lisa lost three games to Susan, she had lost £3 (£1 per game). So, she had to win back that £3 with three more games, then win another five games to win £5.

Logic Puzzle 3. Answer: First, the farmer takes the goat across. The farmer returns alone and then takes the wolf across, but returns with the goat. Then the farmer takes the cabbage across, leaving it with the wolf and returning alone to get the goat.

8	3	4	5	1	2	7	9	6
6	1	5	8	7	9	3	4	2
2	7	9	3	4	6	5	8	1
1	5	2	6	3	4	9	7	8
7	9	3	2	5	8	6	1	4
4	6	8	7	9	1	2	3	5
9	2	1	4	6	3	8	5	7
5	4	6	9	8	7	1	2	3
3	8	7	1	2	5	4	6	9

There are 24
Triangles



TOBY EDWARD'S CHRISTENING



On Sunday 10th October we were finally able to have our son, Toby Edward, christened at Christchurch Church, surrounded by friends and family. Toby's Christening was originally planned for June 2020 but this was cancelled due to Covid, and we decided to

It's a beautiful Church and Rev Sheila Tooke led a wonderful service, particularly including the other children who were there. The only problem with it being postponed was that Toby couldn't fit in the family Christening Gown! - but I think he looked very handsome in his suit, and he actually got to join in with the day, and thoroughly enjoyed himself.



After the service we had food and drinks at Christchurch Community Centre, and a bouncy castle for the children. We were incredibly lucky with the weather and were able to take advantage of the new outdoor seating area. I would like to say a special thanks to Sandra Kay, Sandra Lloyd, Kay Miller and Janet Harper for giving up their time and helping on the day. It really was invaluable, and meant I could relax a little more and enjoy the day. Bryan was also fantastic in helping to set up the hall and dealing with my disorganisation.

Now we have my brother, Matthew Day and Georgina Carter's wedding at the Church to look forward to next May, and afterwards again in the Community Centre - after nearly 2 years of postponement!

The group photo includes Toby's Godparents James and Laura Kitchen and Chris and Mary Steward. The cake was delicious and provide by local baker Bates Bakes.



wait until the restrictions had been lifted so we could enjoy his day with all the friends and family we wanted, some of whom had travelled from Worcester for their first meeting with him.

Christchurch Church is important to my family because my parents, Paul Day and Tracy Day, were married there, and my dad is buried in the churchyard; I was christened there, and Paul and I were married there in 2011. Our first child, Eleanor, was also christened there in 2016.





MERRY CHRISTMAS

FROM THE EXTENSIVE HERON TEAM!

You probably don't realise exactly how many people are involved in putting The Heron together, and getting it through your door each month. Well, here's a Festive group photo of us. We would like to send you our Christmas Greetings and Best Wishes for the New Year. And this isn't all of us, either! Several people couldn't make the photoshoot. 23 villagers in total, plus 2 others!

Standing, left to right: Sandra Kay, Pat Rigby, Sue Rudge, Janet Harper, Sheila Day, Elaine Reed-Hughes, Annie Nason, Ann Mortlock, Martin Tebbs, Penny Gibson, Su Gibson.

Seated, left to right: Sue Norman, Peggy Warby, Sandra Lloyd, Graham Chappell.

Those who couldn't make the date: Andy Day, Liz Scott, Andy Street, Sue Street, Jenny Medcalf, Marion Hawthorn, Caroline McGonagle. Also, Rex Ockenden, our 'Calendar Man'.

Others without whom we could not function: Lewis Bennett, our IT advisor and web person and Steve Bailey at 'March Stationery and Print', who does a great job printing the magazine for us each month.



Our grateful thanks to Andy Lansdell for taking the photo.

Merry Christmas

Any views expressed in The Heron do not necessarily reflect the views of The Heron Editorial Team. The team aim to provide a balanced view of village opinions where such views are expressed. We reserve the right to edit any submissions where we feel this is appropriate.



The Heron is printed by
March Stationery & Print, 5 Fenland Walk, March, Cambs PE15 8TW
Tel: 01354 656614 Email: sales@marchsp.co.uk