

The Heron

Community Magazine

March 2022

Delivered to homes in Christchurch, Euximoor and Tipps End

No.95

In this issue!

Townley School	2
Community Information	3
Adverts/Diary Dates	4
Editorial/Heron News	5
Christchurch Trees	6
Healthwatch/Point of View	6
Doris Rolfe - Poem	7
Ides of March	7
Farming in Past Times	8
Top 10 1998/What's On?	9
Christchurch Eco	13
Obituary - Doris Pawlik	14
Recipe/Spring Cleaning	15
Kids Corner/Puzzlers!	16
Clubs	17-18
Welle Cinema - 007!	21
Reformation Martyrs	22
Church News/Rectory	23
Shrove Tuesday/Incinerator	24
Ash Wednesday	24
Platinum Jubilee Plans	25
Nature Notes	25
Useful Telephone Numbers	26
Puzzle Answers	26
More Trees Please!	27
PC Snippets/Annual Meeting	28

More Trees Please!

Our trees are so important [Page 27]

Take a look around the village.

We have some fantastic old trees.

[Check out page 6]



EDITORIAL TEAM:

Editorial Team Leader - Annie Nason

Treasurer, Advertising Manager, Publisher - Elaine Reed-Hughes

Editorial Team Members: Sue Norman, Liz Scott, Pat Rigby, Elaine Reed-Hughes

Deliveries Manager - Annie Nason

Support—Lewis Bennett (IT), the Delivery Team and Printers

ENQUIRIES

editor@theheron.info Tel: 01354 638088

adverts@theheron.info Tel: 01354 638210



Website: www.theheron.info



TOWNLEY SCHOOL AND PRE-SCHOOL

Christchurch, Wisbech, Cambs. PE14 9NA
office@townley.cambs.sch.uk
Website: www.townley.cambs.sch.uk
01354 638229



Facebook—Townley School
and Pre-School

Remember that our website has
lots more information about
school.

February 2022

In Emperor Class (Years 5 and 6)

The children have said a fond farewell to Mr Enstone this month, he has left to pursue a career away from teaching, he will be missed by us all. We are delighted to say that we have recruited a new teacher from after Easter - until then the children have Mrs Ford and Mrs Higgins teaching them. We will be reading *Pig Heart Boy*, a children's novel by Malorie Blackman, which was first published in 1997. Described by the Guardian as 'A powerful story' it shows the life of a teenage boy who needs a heart transplant.



School News

I am delighted to let you all know that funding for the new classroom build has been agreed by the council! I am meeting with the LA straight after half term to plan the next steps. It should be ready to use by September 2024.

In addition we have been selected as one of six schools across Cambridgeshire and Peterborough to be part of the Tall Trees project. A meeting between the Cambridgeshire County Council and Peterborough City Council Outdoor Education Adviser and Cambridgeshire Early Years staff who are the county lead on Forest Schools Training identified potential gaps in practice, provision and expertise. A great deal of practice across the county did not develop or rise beyond forest school activity in reception years, and really should spread into all years through a Primary School. The two services therefore created Tall Trees, a project funded by the Outdoor Education Service, seeking to address the issue of Forest School embedded throughout a Primary School and to create across the County five schools who would stand as Tall Trees within Forest Schools across the education landscape. As you will be aware we have beautiful grounds, which EYFS make good use of, but by the time the children reach Year 5/6 they rarely use the outdoors to support learning. You may recall our fire pit training, when the Outdoor Adviser came and helped us consider our outdoor environment, when we were invited to apply for a funded place on the project. We are thrilled, although I feel a scrabble from the staff to have one of the two Forest School Level 3 qualification places! We will keep you posted!

Emerald Class (Year 3 and 4)

In Geography, we have studied Wales and Northern Ireland a little more in depth and looked at where some of the landmarks are situated. We have worked using Google maps and plotted those same landmarks on paper maps. The children have really enjoyed discovering more about the United Kingdom. In English, we are finishing to write our animal stories. They are all getting better at developing their character, describing a setting and writing with a plot in mind. I will try and share some of their work on our Emerald class page on the school website after half term.

Community Information

Mobile Post Office:

Visits Monday to Thursday in the lay-by on Upwell Road

Monday and Thursday - 16.30 to 17:00

Tuesday and Wednesday - 16.10 to 17:00

Fridays - no service.

ANYONE WISHING THEIR ITEMS TO BE POSTED,
ON THE DAY, WILL NEED TO GET THEIR POST TO THE
VAN BY 4.40PM - WHICH IS WHEN IT IS COLLECTED.

Use it or lose it!

Community Car Scheme:

This scheme is still running for Christchurch and surrounding villages. To book a ride or to become a volunteer driver please ring 07902 316360. An additional driver is still required for the scheme. For more information please ring the number above.

Mobile Library:

**OUR MOBILE LIBRARY COMES ONCE A MONTH,
ON THE FIRST TUESDAY, AT 12 NOON.**

The van parks in the lay-by on Upwell Road, opposite to the entrance of Fen View. **USE IT OR LOSE IT?**

You can use the Select and Collect service online, or by calling 0345 045 5225.

https://cambridgeshire-self.achieveservice.com/service/Select_and_Collect

Please support your local Library Service, right in the heart of your community.



Welle Ltd - your independent pharmacy in Upwell

2h · 📍

Text messaging when your prescription is ready for collection is now live! Just register your mobile number next time you're at the pharmacy to get this free service

CAMBRIDGESHIRE COUNTY COUNCIL

Sixteen Foot Bank (B1098), Wimblington, Sixteen Foot Bank (B1098), Stonea and Sixteen Foot Bank (B1098), Christchurch

(TEMPORARY PROHIBITION OF THROUGH TRAFFIC) ORDER 2022/176

NOTICE is given that Cambridgeshire County Council has made an Order pursuant to the Road Traffic Regulation Act 1984, as amended by the Road Traffic (Temporary Restrictions) Act 1991, the effect of which is to stop any vehicle from proceeding along Sixteen Foot Bank (B1098), Wimblington, Sixteen Foot Bank (B1098), Stonea and Sixteen Foot Bank (B1098), Christchurch as lies between the B1093 and the B1099. Access will be maintained to properties affected by this order.

The alternative route for vehicles is via B1093 - A141 - B1101 - B1099 - B1098 and vice versa.

The Order is made to facilitate carriageway patching and associated works which are being carried out on or near this highway and it will come into operation on 21 March 2022 and continue until these works have finished or on the 20 September 2023 whichever is the earlier. *It is anticipated that these works will be carried out between 21 March and 25 March 2022.*

Steven Cox, Executive Director, CCC
Wednesday 23 February 2022

OBITUARY

My husband David Yates sadly passed away on the evening of Friday 18th February. Since then, I have received many phone calls, cards and flowers, from friends and neighbours and I can't thank you all enough for your kindness.

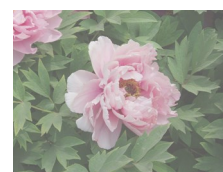
David and I always said what a wonderful village Christchurch is. This is so true.

Kind regards to you all Wendy.



CHRISTCHURCH GARDENING CLUB OPEN MEETING - ALL WELCOME TUESDAY 15TH MARCH 2022 - 7.00 pm

DAVE WHEATLEY - PETITE PEONIES



Christchurch Community Centre
Upwell Road, PE14 9LL

Entrance Fee £3 includes raffle. Call 01354638230 for further information or just come along.



Please remember that no dogs are allowed on the playing field. Thank you. Your co-operation is much appreciated.

Advertising in the Heron

Quarter Page (14cm High x 9.5cm Wide)

Portrait Format

6 x issues £50

12 x issues £90

Eighth Page (6.5cm High x 9.5cm Wide)

Landscape Format

6 x issues £34

12 x issues £64

Please contact adverts@theheron.info or phone Elaine on 01354 638310.

Advertisers - all our advert rates and conditions can be found on our website www.theheron.info. Business advertisers can book a series of 6 or 12 adverts, paid in advance. Adverts for village fundraising events, personal announcements, or small private ads are usually free.

Do you know someone who would like to receive a Heron each month, who doesn't live in the village? Contact us at adverts@theheron.info and we will send them a subscription form.

The cost is £25.00 per year (including P&P).

Diary Dates

DATE	EVENT	TIME	PLACE	PAGE
Tues 1 st	Mobile Library	12- 12.30pm	Lay-by (Fen View)	3
Tues 1 st	Book Club	7.30pm	Glynan, Crown Road	17
Weds 2 nd	Ash Wednesday Service	7pm	Doddington Church	23
Sat 5 th	Table Top Sale - Heron Fundraiser	10am – 1pm	CCC	5
Sun 6 th	Welle Cinema	2pm	3 Holes V Hall	21
Tues 8 th	Art Group	1.30-3.30pm	CCC	17
Tues 8 th	W I	7pm	CCC	18, 28
Weds 9 th	Lunch Break	12-2pm	CCC	18
Mon 14 th	Parish Council Meeting	7.30pm	CCC	28
Tue 15 th	Gardening Club Open Meeting	7pm	CCC	3, 18
Fri 18 th	RED NOSE DAY			
Sat 19 th	Self Defence Class	10am-12 noon	CCC	9
21 st - 25 th	16 FOOT BANK CLOSURE			
Tue 22 nd	Art Group	1.30-3.30	CCC	
Tue 22 nd	Annual Parish Meeting	7 for 7.30pm	CCC	28
Weds 23 rd	Lunch Break	12-2pm	CCC	18
Thur 24 th	WI Centenary Show	1-4.30pm	CCC	28
Sat 26 th	Quiz Night	7.00pm	CCC	9
Sun April 3 rd	JAZZ CLUB	12.30-2.45pm	CCC	-
Every Mon	Short Mat Bowls	7-9pm	CCC	18
Every Weds	Chair-based exercise class Kathleen Henderson	10-10.50am 07880 543821	CCC	26
Every Thurs	Coffee, Cake & Chat	2-3pm	Church	23
M,T,W,TH	Mobile Post Office	Various	Lay-by(Fen View)	3
ALSO CHECK: "WHAT'S ON IN MARCH?" P 9 + DUN COW EVENTS P 19 + CHURCH P 23				

At the time of going to press, all information is as accurate and up to date as we can make it. Changes and updates may be published subsequently. All information contributed by outside

Editorial Well what a month we've just had! We've certainly seen some interesting weather in these parts. Here's hoping that there weren't too many of you affected by the high winds and driving rain. I know those down Euximoor were some of the worst affected - with some people having no power for more than 48 hours after the storm on 19th February! We can only keep our fingers crossed that this doesn't happen again any time soon!

I notice that some of our wonderful gardens have beautiful displays of snowdrops and the daffodils are almost with us - which must mean it's nearly Easter!

Our focus this month is trees. We have some cracking trees in our village with some having TPOs (Tree Preservation Orders) on them. Check out Page 6 to see which ones. Trees are so important in this age of drastic Climate Change. Please read the article on page 27, by the Friends of the Earth, to find out why.

We hope you will support our latest Heron Fundraiser by coming along to the Table Top Sale, at the Community Centre, on 5th March. We have a full room of tables offering lots of lovely wares, plus we will be selling bacon butties, cake and refreshments - all in aid of the Heron.

The Platinum Jubilee celebrations are currently being booked and organised by Paul and Sue at the Dun Cow and the Community Centre committee (see page 25). Plans are starting to take shape so we can expect to see something to suit everyone from Thursday 2nd right through to the evening of Sunday 5th June. Watch this space for updates as plans unfold.

Please note, on the back page, details of the Parish Annual Meeting which is your opportunity, to have your say, if there are any issues in the village that you feel need addressing.

The Community Centre are holding a Quiz Night on 26th March (see page 14). If it's anything like the last one, it promises to be a good night.

We hope you enjoy this month's edition.

Elaine Reed-Hughes

THANK YOU

Stephen Clifford and family would like to say thank you for everyone's kind words following the sad loss of Kathy last month.

Thanks also go to A.R. Clingo, Funeral Directors.



Heron News

Heron Fundraiser
Indoor Table Top Sale
Christchurch Community Centre
Saturday 5 March 2022
10.00am-1.00pm

STRICTLY NO PUBLIC ENTRY UNTIL 10.00 AM

Sellers set up from 9.00 am
Come along and grab a bargain and
support your village magazine!

10 Tables
Tea & Coffee
Bacon Rolls
Cakes
Raffle

HERON 2023 CALENDAR: "The Seasons in Christchurch".

Don't forget to send your SEASONAL PHOTOS of the area to editor@theheron.info or put paper photos with a covering note through the letterbox of 5, Upwell Road (at the Lay-by). (4 photos per person per season max please). Thanks.

Copy Deadline - The deadline for copy for the **April** edition of the Heron is **24 March 2022**.



All of us at The Heron would like express our heartfelt condolences to Sue Norman, who has recently lost her mother Doris. Sue is a long-standing member of our team.

Heartfelt condolences also go to Wendy Yates on the recent loss of her husband, David. Both David and Wendy have been staunch supporters of The Heron for many years, and David was a member of The Friends of The Heron. We send our love to them both.

Letters to the Editorial Team

The Editorial team welcome letters from its readers. Please email letters to: editor@heron.info or post them to *The Editor of The Heron, Grasshopper Cottage, 5 Upwell Road, Christchurch, PE14 9LF.*

PLEASE NOTE: Letters will only be considered for publication if they are accompanied by name and contact details - names will be published, but not contact details. The Heron will not share any contact details unless given permission.

The team look forward to hearing from you!

Julie Andrews at 85!

"My Favourite Things" ... with a twist!

To commemorate her birthday, actress/vocalist, Julie Andrews made a special appearance at Manhattan's Radio City Music Hall for the benefit of the AARP (American Association of Retired Persons).

One of the musical numbers she performed was 'My Favourite Things' from the legendary movie 'Sound of Music'. Here are the lyrics she used:

*Botox and nose drops and needles for knitting,
Walkers and handrails and new dental fittings,
Bundles of magazines tied up in string,
These are a few of my favourite things.*

*Cadillacs and cataracts, hearing aids and glasses,
Polydent and Fixodent and false teeth in glasses,
Pacemakers, golf carts and porches with swings,
These are a few of my favourite things.*

*When the pipes leak, When the bones creak,
When the knees go bad,
I simply remember my favourite things,
And then I don't feel so bad.*

*Hot tea and crumpets and corn pads for bunions,
No spicy hot food or food cooked with onions,
Bathrobes and heating pads and hot meals they bring,
These are a few of my favourite things.*

*Back pain, confused brains and no need for sinnin',
Thin bones and fractures and hair that is thinnin',
And we won't mention our short shrunk frames,
When we remember our favourite things.*

*When the joints ache, When the hips break,
When the eyes grow dim,
Then I remember the great life I've had,
And then I don't feel so bad.*

Ms. Andrews received a standing ovation from the crowd that lasted over four minutes and repeated encores.

POINT OF VIEW

Quote - Archbishop Desmond Tutu

"If you are neutral in situations of injustice, you have chosen the side of the oppressor. If an elephant has its foot on the tail of a mouse and says that it is neutral, the mouse will not appreciate its neutrality".



"Hummm. Thinking about this....." Ebenezer Church Mouse

CHRISTCHURCH TREES: DID YOU KNOW?

We have several trees in Christchurch which have **Tree Preservation Orders** on them. Here are details of some of them:

- **01/1986** appears to protect all trees on the Old Rectory.
- **09/1987** covers a single sycamore in Crown Road. It's described as Ivy House, Upwell Road, as in 1987 it was at the bottom of the garden of that property, but the land has been sold since and houses have been built fronting onto Crown Road, so it's now in Crown Road.
- **02/1996** covers three willows and an ash in the garden of the Dun Cow.
- **02/2003** covers ten ash trees on Green Lane, starting with the one just beyond the entrance to The Oaks and Meadow View.

A Tree Preservation Order is a part of town and country planning in the United Kingdom. A TPO is made by a local planning authority to protect specific trees or a particular area, group or woodland from deliberate damage and destruction if those trees are important for the amenity of the area.



Help improve health and care for local people.

Do you have lived experience of being a family carer, have a learning disability, physical disability or sensory impairment? Then local health and care champion Healthwatch Cambridgeshire would like to hear from you. It's looking for new members for the Cambridgeshire and Peterborough Partnership Boards which work with local councils to improve health and care services.

If you have experience of using adult social care, or care for someone that does, please share what you

know and help make care better for carers, disabled people and older people across our area.

You'll bring your knowledge and experience to meetings every two or three months and represent the views of other care users, helping to shape services and support for others.

You'll get training and support, including help with communications if you need it - such as a British Sign Language interpreter or information in Easy Read. We also pay out of pocket expenses.

Get in touch Like to make a difference? Have a chat with Graham Lewis, Healthwatch Partnership Development Manager. Tel: 07432 865996 or email graham.lewis@healthwatchcambspboro.co.uk

A Poem for Doris Rolfe, and was read at her funeral.

It was written by her granddaughter Alison Swann.

A Mum, a Gran and a Great Granny too,
At 97 years old, she'd seen it all through,
A war, the strikes and COVID as well,
All the tales and the stories that she used to tell!

She grew up in the village and stayed all her life,
Met my Granddad, fell in love and became his dear wife.
Working on the land and doing whatever she could,
Having Mum and Malcolm and loving like she should.

A friendly face, a helping hand, she had always been right there,
Now there's an empty space, in Granny's window chair,
She was always very busy, making all kinds of things,
Cricket teas, village fetes and sewing as she sings.

Cooking in the kitchen, whistling as she baked,
Then tinkling on the piano between making scones and cakes.
The garden was her pride and joy, it always looked so nice,
Looking in her book of plants and offering out advice.

A puzzle on the table, whilst drinking cups of tea,
We'd talk about the week gone by and who we both had seen,
She liked to watch the tele, or maybe read a book,
Had her hair done weekly and cared about how she looked.

She was loved by so many people and will be sadly missed by all,
But we'll hang on to the memories and the photos on the wall.
Rest in peace dear Granny, as your loved ones are waiting there,
And always know how much joy you brought and just how much we cared.

Forever in our hearts.

Miss you Granny Doris xx

"The Ides of March".... March 15th

The Bard once again has much to answer for...

In ancient Rome, the Ides of March were equivalent to our March 15. In the Roman calendar, this date corresponded to several religious observances. The Romans also considered the 'Ides of March' as a deadline for settling debts.

You've probably heard the soothsayer's warning to Julius Caesar in Shakespeare's play of the same name. Not only did the words stick, but they also branded the phrase – and the date, March 15th – with a gloomy connotation.
(Was Brutus settling a 'debt'?)

But the 'Ides of March' has a non-threatening origin. KALEDS, NONES and IDES were ancient markers used to reference dates in relation to lunar phases. IDES simply referred to the first full moon of a given month, which usually fell between the 13th and the 15th. In fact, the IDES OF MARCH once signified the beginning of a new year, which were celebrated with feasts and rejoicing.

So we don't need to "Beware the Ides of March".... right? Hummmm....



BACK BY POPULAR REQUEST ... Jill Bliss and her husband Gabriel are writing some articles for The Heron during 2022, about Farming in past times.

As a couple of 80-year-olds, born during the war, with food rationing and the hard times that the country went through, we are going back in time with memories of how farming was carried out during those bleak times, on our respective family farms. We are going back as far as when horses were used to work the land, along with lots of farm staff per farm, who worked very hard manually to help feed the nation, as you will see from our following memories-----starting with the winter months.



WINTER Part 2

Mostly in the early months after Christmas, the corn thrashing machine would arrive in the yard to thrash out some corn stacks, these from the previous summers corn harvest. If this happened during school holidays, then the farm workers' children would arrive to try and catch some mice, a very exciting time for them – and there was some competition to see who had caught the most at the end of a day! Not very many, as most escaped, but it gave them some entertainment. The farm dogs took care of any rats that escaped the children's efforts. Meanwhile, the thrashing machine would be set up, the thatch on the stack roof would be cleared and carted away, and work would begin. The sheaves were fed one by one into the drum at the top of the machine and the corn would be fed into 18 stone bags at ground level.

These were then loaded onto the hauliers' lorry by hand, to be transported to the corn mill or elsewhere, depending which merchant had purchased it. The corn crop in those days would yield about 2 tons per acre compared to today's yield in a good year of anything up to 5 tons per acre. The chaff from the resulting thrashing exercise would be collected by hand, put into big bags and put in a dry store to add to the cattle food mix, the following winter. The thrashed straw would be elevated into another stack to be used as and when needed for bedding for the horses, cattle and chicken house nest boxes etc.



After the war, in the 1940s/50s many farms were still using heavy horses to pull their ploughs, drills, cultivators and trailers etc. The head horseman would be at work at 4am in the morning to feed and prepare his horse for a day's work commencing at 7am. If a horse was needed to pull the potato blight sprayer, he would have a light feed before work, as this was done with a powder puffed from the machine as it moved forward; this powder would then stick to the dew-covered plants and dry on. This action took place when there was little or no wind for

obvious enough reasons, and carried out on a regular basis until the early potatoes were ready to harvest, and the same process for the later crop. Tractors were coming onto farms gradually by the late 1940s and replacing horses to do the heavy work.



Potato crops were stored outside in triangular graves on the field headlands, covered with straw, which was then covered with earth to a good thickness to prevent frost damage. This was all done by hand in those days. Later, these potatoes were riddled

and sorted by hand and put into hessian sacks, each weighing 50 kilos. The work was done by the grave using a potato riddle propelled by a small, mostly Lister Petrol engine. Five men could riddle 10-12tons per day, given a good start and with no hold ups! The potato lorry would be on site to collect the order at about 3pm on the same day, destined for the markets. All manual work, sorting and riddling etc was done under a temporary shelter used mainly as a wind break.

Sugar beet was ploughed out by horse power, topped by hand and put into small heaps in the row, to be collected with a hand beet fork and loaded into a horse drawn cart and taken to be put in a large heap by the roadside, ready for collection by the haulier to take to the sugar beet factory for processing. Again, manual labour was used to load the lorry - a man with beet fork, filling fork then tossing contents over the side of lorry.



In those days we had PROPER WINTERS, so all beet heaps were strawed up to prevent frost damage. The farmer was issued with daily permits from our destined factory, indicating when a collection of beet was due, so the farmer knew how much straw to remove at a time. Our local factories back in the day were Spalding and Wislington.

Gabriel and Jill Bliss

Top 10 - For 1st March 1998

1. Frozen - Madonna
2. My Heart Will Go On - Celine Dion
3. Brimful of Asha - Corner Shop
4. The Ballard of Tom Jones - Space (featuring Cerys Matthews)
5. Truly, Madly, Deeply - Savage Garden
6. Dr Jones - Aqua
7. How Do I Live - Leann Rimes
8. Show Me Love - Robyn
9. Be Alone No More - Another Level
10. Who Am I? - Beenie Man

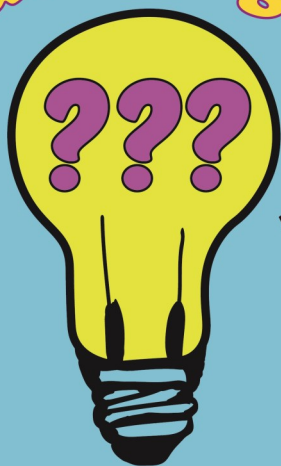


Events in 1998

- The film "Titanic" is the first to gross \$1Billion and wins Best Picture at the Academy Awards.
- In Lisbon, Portugal, the Vasco de Gama road bridge opens, making it the longest bridge in Europe.
- The Angel of the North, by Antony Gormley was completed.



Quiz Night



Christchurch community centre is hosting a quiz night

£3.00 per person, maximum to a team is 6 people, please bring your own nibbles. Stocked bar will be open.

To book your tickets please call
Geoff Harper 07504691509 or 01354 638681
Pat Rigby 07776142642

Saturday 26th March 2022
Christchurch Community Centre
Doors Open 6:30pm, Quiz Starts 7pm

What's on in March 2022?

5th March 2022 Saturday: Table Top Sale in aid of The Heron; Christchurch Community Centre 10am-1.00pm 16 tables raffle, cake, bacon rolls, tea and coffee

5th March 2022 Saturday: Ely Record Fair, The Maltings, Ship Lane Ely 10.00am – 4.00pm 1000s of records, CDs, memorabilia, rarities and bargains

5th March 2022 Saturday: Stock Car Season Opener, Adrian Flux arena, Kings Lynn Gate opens 3.00pm F2 Stock Cars, WCQR, 2L Stock Cars 1300cc Stock Cars

19th March 2022: Self defence class at Christchurch Community Centre 10.00am-12.00 noon. Limited places available £2.50 contact Pat Rigby 07776 142642

26th March 2022: Quiz Night at Christchurch Community Centre 7.00 start. Bring own nibbles, bar open, ticket only £3.00 contact Pat Rigby on 07776 142642 or Geoff Harper 01354 638681 or 07504 691509

26th March 2022: Saturday Arts and Craft Fair, St Johns Church, Main Road, Parson Drove PE13 4LF 10.00am-4.00pm pictures, paintings, photography, Jewellery, woodwork, preserves, cakes, honey and more plus

Upwell Computer Repairs

Sales – Repairs - Maintenance - Upgrades

**Sales & Support
Internet Setup
Virus Removal
Tuition
Web Design
Email Setup
System Installations
Data Recovery Services**



**Laptop Screen Replacement
Windows Reinstallation
Hardware Upgrades
Software Upgrades
On-Site Services
Custom Built PC's
Internet Security
Network Installations**

Contact Lewis today for a free consultation

01945 772717 - 07849 778525

support@upwellcomputerrepairs.co.uk - www.upwellcomputerrepairs.co.uk



Your Complete Outdoor Play Solution

**Design · Manufacture
Install · Maintain · Parts**



+44 (0) 1354 638 359



sales@onlineplaygrounds.co.uk



onlineplaygrounds.co.uk



Qualified Seamstress

**All dressmaking and sewing
jobs undertaken. Alterations
to clothing and curtains.**

**Please contact: Sandra Kay
on 01354 638478**

caters for all occasions
music from the 70s to 2000s

M & K Roadshow

Martin
Mobile DJ

Keith 01354 638615
07479943870
turbo.bruce586@gmail.com

GRANARY STUDIO

Your local picture framer

01354 638614

www.granarystudio.uk

The Granary
Hall Farm, Upwell Road
Christchurch
PE14 9LJ



March Stationery & Print

Booklet Printing
Business Cards
Digital Photos
Leaflets
Newsletters
Banners

01354 656614

sales@marchsp.co.uk
5 Fenland Walk, March, PE15 8TW



LW Vehicle Services Ltd *Car and Commercial Repairs*

- Class 4 and 7 MOT Testing
- Full Diagnostic Service
- HGV Maintenance
- Batteries - Tyres - Exhausts
- Welding and Fabrication
- Timing Belts
- HGV PMI Inspections
- Aircan Service and Repair
- Courtesy Car Available
- All Service and Repairs Undertaken
- Car and Van Sales

Call 01354 610172
Email lwvs@outlook.com
Web lwvehicleservices.com



March Road, Welney, PE14 9SE



Wisbech •FUNERAL SERVICE•

Independent Family Funeral Directors



Funeral Directors James and Laura are proud to be serving the community

Personal, caring & affordable

*Advice without obligation
24 hours a day*



FUNERALS FROM £2,495
Inclusive of all fees

Chapel of Rest
Traditional, Modern & Eco-friendly funerals
Pre-paid & pre-arranged funeral plans

17 Old Market, Wisbech, Cambridgeshire, PE13 1NB

01945 405950 (24hr)

www.wisbechfuneralservice.co.uk

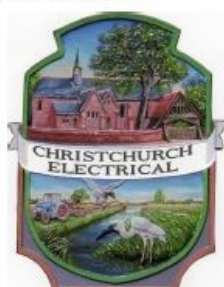
CHRISTCHURCH ELECTRICAL

Simon Freeland Hill Farm, 3 Church
Road, Christchurch, PE14 9PQ

Tel: 01354 638802 Mobile: 07727 046439



Domestic electrical work undertaken.
No job too small.
Free quotations / estimates.



www.electricalcompetentperson.co.uk

www.electricalsafetyregister.com



www.allpestscontrolled.co.uk

WOODWORM

BEDBUGS

MOLES

MICE

RATS

ANTS



SQUIRRELS

RABBITS

WASPS

BIRDS

FLEAS

BEES

Call Danny on

Tel: 01945 772 153

Mob: 07795 073 985



A JONES & SON

TELEVISION SALES/REPAIRS/INSTALLATION

FREE LOCAL DELIVERY

FIRST CLASS AERIAL INSTALLATIONS/ADDITIONAL POINTS

26 March Road, Wimblington, March, Cambs PE15 0RN

Tel: 01354 740320

CLOSED ALL DAY TUESDAYS

FOUR SEASONS TREE SERVICES

Qualified & Professional Tree
and Client Care

PRUNING ● LOPPING ● FELLING

PLANTING ● REDUCING & RESHAPING

CROWN RAISING ● HEDGE TRIMMING

THINNING ● POLLARDING ● STUMP REMOVALS

OVERGROWN GARDENS PUT BACK INTO SHAPE

FRUIT TREES TREATED ● LOG & WOODCHIP SALES

FREE ESTIMATES & ADVICE WITH NO OBLIGATION

For quality jobs at a competitive price call:

Home: 01353 721665 - Mob: 07771 707921

All work carried out to BS 3998 Standard

A genuine family managed business est. for over 30 years - Fully Insured



THE NAME YOU CAN TRUST



This company offers a 7 day cooling off period



645 Services Ltd

For your complete Oil Services

Registered Office: 12/13 The Crescent, Wisbech,

Cambs PE13 1EH – Director: B E Easey

Company Registration Number: 07872493

VAT Number: 126 5422 30

For a competitive oil quote, for delivery
in the village and surrounding area,
(Outwell, Upwell, Tipps End, Welney)
please call 645 Services' local
Representative, Elaine, on 01354
638310 or 07803 178824
(office hours only please)
or Email: elaine@645services.co.uk

We will always try and be the best price
around - with local deliveries scheduled
for most weeks throughout the month.



Thanks for
your support!

APRIL



The Crisp Packet Recycling
Scheme is closing

Please drop off your last crisp packets
and then recycle at local supermarkets!

CHRISTCHURCH ECO

It has been a while since I updated everyone on Christchurch Eco. January sucked a little; we lost our Grandma at the beginning of the month, and it was a bit crazy sorting everything out, and then to top it off, I had an accident and dislocated my knee, so my mobility is pretty small.

I received a sad email a few weeks ago. It will mean that our Christchurch Eco recycling will end in April. Walkers have decided to stop the crisp packet recycling scheme. The last time we can send off items is **April 25th**.

It's a sad time because of all the work that it involved, but their reasoning is that more supermarkets now have collection points. Now I personally think (and it is my own opinion) that the supermarkets are not doing enough, but I respect their decision and now will move on to other ideas.

I know a lot of people will say that we can still collect the other streams, but the honest answer is we don't actually collect enough to warrant a station; nor the time to do it, and if this trend continues more companies will be stopping a collection, so it would be better to stop the recycling collection completely at the end of March.

Now that doesn't mean Eco stops, I'm looking at creating a hub, using my design and web skills, where people can learn about latest Eco trends, products etc. It's a work in progress but an idea to keep the Eco dream going.

For those who were amazing and offered to help, I'll be messaging soon so we can meet up, but for now, keep collecting and I will keep you all updated on future eco stuff.

Nate Lansdell.

We are certain that all of Christchurch residents will join with us at The Heron in thanking Nate for his brilliant ideas about recycling in the village, and for working so hard on our behalf, and on behalf of The Planet. His dedication to his vision has inspired and impressed many of us, and particularly our school children.
WELL DONE, THAT MAN!

We look forward to hearing your plans for saving our bit of the planet. Ed



KEEP UP THAT NEW YEAR'S RESOLUTION -

"I resolve to eat less and move about a bit more in 2022"

Here is Kathleen's tip for March.

Do you have children/grandchildren in your home? It's important they develop the habit of moving around and staying active. Why not encourage this by playing catching games with balls. This is a fun way to exercise and also practise hand-eye coordination. Throw a ball to each other, and vary the height and distance it's thrown so that you have to move or stretch to catch it. It's even better fun if each of you has a ball, and they are different sizes. Throw to each other at the same time.

If you aren't able to indulge in ball throwing, then try this. Move your ankles and wrists in as many directions as you can. It's very important to keep your joints as supple as they can be. You could also have a go at juggling.

Well – why not enjoy exercising?

Kathleen Henderson



OBITUARY FOR DORIS PAWLIK

Written by her daughter, Sue Norman.

Mum was born in Kilburn in 1931, and was the second of four children. The family soon moved to Boreham Wood as my Granddad, who was a guard on the railway, had to move with his job.

Mum trained as a shorthand typist and, on leaving school, worked at Henderson's, a firm that made things from sheet metal. It was here that she met my Dad.

When I was eleven, she decided to resume work as a secretary, this time at the Elstree Film Studios (where "Strictly Come Dancing" is now made). She saw many famous film and music stars over the years but remained quite unimpressed.

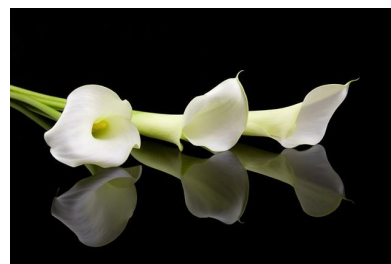
On their retirement, Mum and Dad moved to Christchurch to live near the rest of the family. They joined many of the clubs and activities in the village, including Short Mat Bowls, Good Companions, The Gardening Club, and Coffee, Cake and Chat at the Church. Dad died in 1994.

Mum was a private person who derived great pleasure from her home and family, especially her Grandchildren Lorna and Holly, and Great-Grandchildren Morgan and Bobby.

In later years she suffered from Alzheimers, which meant that she had to give up knitting and handicrafts, but she derived great pleasure from sitting in her conservatory watching the birds.

In August 2021 she celebrated her 90th birthday, surrounded by her family (picture). In October she had a fall at home and was transferred to a care home, where she unexpectedly passed away on February 16th 2022.

Her funeral will be on Monday March 7th at 1pm, in the Church, followed by an Interment in the Churchyard. The family would love to see anyone that knew Doris at the service and later at the Dun Cow for refreshments.



Philately, anyone?

When I was 12 years old, my father gifted me his stamp collection, triggering a lifelong love of philately! Because we were living in Rhodesia (now Zimbabwe) at that time, I focused on Rhodesian stamps. When I moved to England at the age of 19, I joined the Rhodesian Study Circle meeting others with similar interests. I began buying and selling stamps from around the World on eBay as a hobby until I retired, and joined Stanley Gibbons as a buyer/valuer before deciding to 'go it alone'

travelling to stamp fairs, ranging from venues such as York racecourse to community centres in Dagenham.
<https://www.ebay.com/str/chasstamps>

Stamp collecting isn't for everyone, but there are changes afoot that will affect everyone next year. The Post Office is gradually introducing barcoded stamps for added security. You can even watch a 'Shaun the Sheep' promotional video if you scan the new barcodes!



From 31st January 2023 the current non-barcoded stamps with just the Queen's Head, and also Christmas stamps, will be unusable. This does not apply to the special, commemorative editions such as those for the Platinum Jubilee. So, unless you want to save them, then you need to 'use them or lose them'. They can't be changed at Post Offices. Instead, the P.O. are setting up a 'Swap Out Scheme' where you can send them via freepost, with a special form only available through Customer Service online or at a local customer Service Point, not at local Post Offices.



Probably easier to use them all up on this year's Christmas cards! To find out more see <https://www.royalmail.com/sending/barcoded-stamps>

Charlie Rudge

St Clement's Shortbread

These lemony, flower-topped St Clement's shortbreads are ideal to serve as afternoon tea on Mother's Day. They're simple but delectable: a soft shortbread-like base with a zingy citrus topping melding into it – a glorious bake for Mothering Sunday (or any day). You will need a 20cm x 30cm cake tin, greased and lined with non-stick baking paper.

For the shortbread

- 225g unsalted butter, chilled and cut into cubes
- 2 fresh thyme sprigs, leaves picked
- 100g caster sugar
- 325g plain flour
- Icing sugar to dust

For the topping:

- 15g caster sugar
- 40g plain flour
- Juice of 2 lemons plus finely grated zest of half
- Juice of 1 orange plus finely grated zest of half
- 4 medium free range eggs

Edible flowers to serve (optional)



- For the base, heat the oven to 180°C/160°C fan/gas 4. In a food processor, pulse together the butter, thyme and sugar with a pinch of salt until the mixture is creamy. Add the flour and pulse again until it just comes together to form a dough. If you don't have a food processor, beat the ingredients in a mixing bowl using an electric mixer until creamy, then quickly beat in the flour.
- Press the dough into the lined cake tin, then chill for 30 minutes until very cold. Prick the base all over with a fork, then bake for 20-25 minutes until golden and dry.
- Mix the topping ingredients (don't over-whisk), then immediately pour over the baked base. Return to the oven for another 20-25 minutes until just set, then leave to cool in the tin. Dust with icing sugar and scatter with edible flowers, if you like. Cut into squares or rectangles to serve.

Spring Cleaning - Here are a few tips!



The Humble Lemon

Lemons are an excellent multi-purpose eco cleaning household essential and if you get bored with cleaning, just

use them to make a delicious lemonade or cake instead!

We all know lemons are a fantastic zesty ingredient in food and drinks, but did you know there lots of ways lemons can help you out with household chores? Best of all, they're cheap, non-toxic and can be bought, plastic-free, so why not try out some of these top tips?

Freshen your microwave. Deodorise your microwave and make the interior easier to wipe down by adding lemon slices to a bowl of water and heating in it on high until the microwave's window is steamy. Let the bowl sit for 15 minutes before you open the door, then clean away any grime and grease with ease.

Remove stains from linens. This tip to treat a set-in stain is safe for even delicate or vintage fabrics: cover the stain with a paste of lemon juice and salt. Let the mixture sit for half an hour, then rinse with vinegar and warm water.

Get stains out of a chopping board or butcher block. Run the cut side of a lemon over the board to

remove food stains and smells. For extra cleaning power, sprinkle it with salt or bicarb first. If your stains are particularly stubborn, let everything sit overnight before you rinse with water. Wipe wooden boards with food grade oil to seal.

Polish Metal. Slice a lemon in half, dip it in salt and rub it onto metal surfaces such as stainless steel and copper pans to eliminate grime and make them shine. You can use it to polish brass, copper, chrome, aluminium, bronze, pewter and stainless steel, but avoid using it on plated silver and gold!

Shine bathroom fixtures. Run the cut side of a lemon over taps, drains, and more to remove mineral deposits and make them sparkle. Rinse and dry thoroughly when you're done. Don't use this trick on gold plated taps as it could cause pitting. Lemon juice will also help remove hard water stains and other marks on glass shower screens. Use straight lemon juice on a sponge for tough jobs or dilute a few tablespoons in a cup of water and spray it on.

<https://www.goodhousekeeping.com/uk>





HAPPY ST PATRICK'S DAY!

On 17th March each year the Irish celebrate the feast of their Patron Saint – Saint Patrick. They are joined by others around the world, especially in America where many Irish travelled in the 1800s to find a better life. The early years of Chicago coincided with a big rise in Irish immigration in the 1830s. Some Irish people already lived in Chicago when it was incorporated as a city in 1837. In the next few years, the numbers of Irish people grew rapidly, particularly after the arrival of refugees from the Great Potato Famine. By 1850 Irish immigrants accounted for about one-fifth of the city's population. These days, in honour of St Patrick's Day, the Chicago River is even dyed green!



Who was St Patrick?

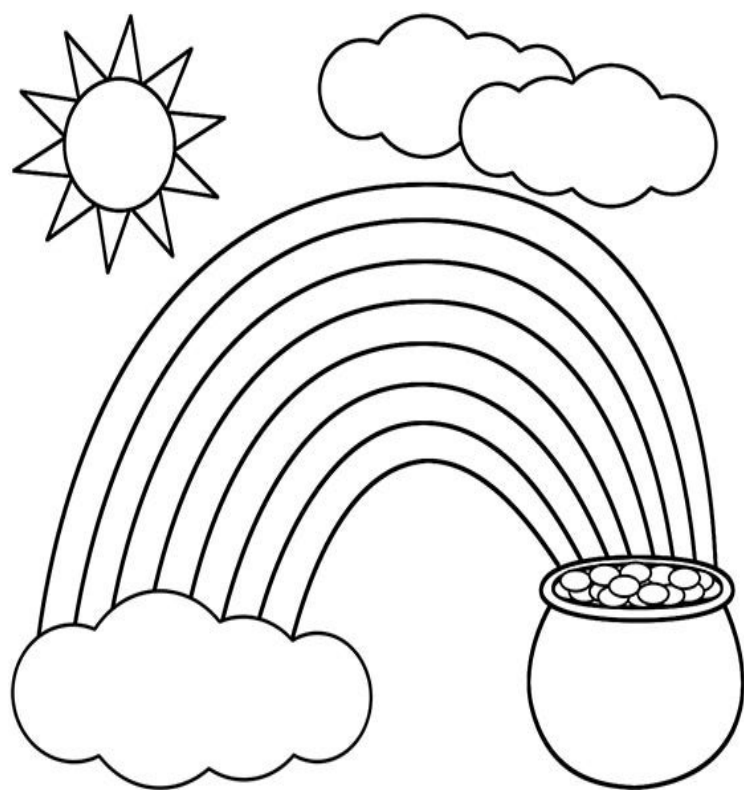
Legend says that the 16year old Patrick was kidnapped from Britain by Irish pirates around the year 400. He then led a lonely life as a slave in Ireland, tending sheep and praying. When he was eventually freed and returned to Britain, he became a priest and asked to return to Ireland. He converted many to Christianity and is even said to have rid Ireland of snakes, which is why there are none in Ireland today!

People celebrate by dressing in green, dancing, parading, wearing a bunch of shamrock for good luck, and adults might even have a pint or two of Dublin's famous drink – Guinness!

Something to Google for yourselves:

1. What foods do we associate with Ireland?
2. What Irish symbol is also used by a popular drinks brand?
3. What is a leprechaun?
4. What is colcannon?
5. And how do we say cheers and good luck in Irish?

Irish tradition has it that a Pot of Gold can be found at the end of a Rainbow. Have you ever found one? You can colour in this rainbow and the Pot of Gold.

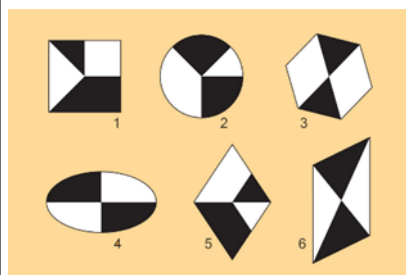


Answers on page 26

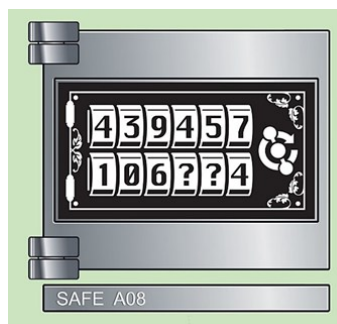
Puzzlers!

3	2	1	0
1	9	2	0
0	8	1	?
7	5	2	4

Which number should replace the question mark to form accurate equations, knowing that three numbers are shown per row (i.e. two of the numbers form a two-digit number)?



2. Which shape (1-6) contains more white than black?



3. Safe code. To open this safe, you have to replace the question marks with the correct figures. You can find this figure by determining the pattern behind the numbers shown.

We meet on the 2nd and 4th Tuesday of the month 1.30 -3.30 in the Village Hall (term time).

Christchurch Art Group



- Our focus is to explore and experiment with the various painting and drawing media
- To enable participants to develop their own style
- Above all to have fun and enjoy the sessions
- The sessions are planned and adjusted to suit, depending on the experience and interests of the group
- The group leader is experienced in a wide range of media, and has some art materials for you to try out if they are new to you. *We have suitable paper for a reasonable cost to purchase and materials can be borrowed until you have your own*. Our group is friendly and relaxed and we love to welcome new folk.

If you would like a programme, please contact Jan and one will be sent with any further information.



Please contact Sandra 01354 638478 or Jan 01354 638217. (clifford.jjr5846@gmail.com)

**(Please note we may still have to follow 'Covid' rules, so may not be able to offer equipment to borrow. Items can be ordered for use if requested.)*

Hello Christchurch Stargazers. What will March 2022 bring to our night skies?

Mercury will be a morning planet, poorly placed throughout the month.

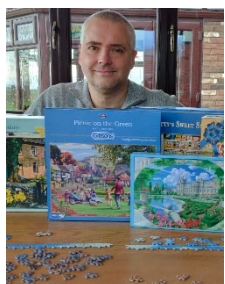
Venus will be a bright morning planet, 50% phase around 20 March; near **Mars** and **Saturn** at end of March. **Mars** is a morning object, slowly brightening, which sits close to **Saturn** and **Venus** at end of month. **Jupiter**: Solar conjunction on 5 March; thereafter Jupiter not visible for the rest of the month. **Saturn** is a poorly positioned morning planet; near **Venus** and **Mars** at the end of March. A **Crescent Moon** will be nearby on 28 March. **Uranus** is best at the start of March; currently in southern Aries, lost by end of the month. **Neptune** in conjunction with the Sun on 13 March and not visible this month. **Comet 19P/Borrelly** is a viable target for small telescopes in March 2022, shining brighter than 10th magnitude.

Christchurch Stargazers



Remember - never ever look at the sun without the correct protective equipment.

Mark Andrews



Christchurch Jigsaw Club

During lockdown I started doing jigsaws, and I've found it a great way to relax away from work and screens. Swapping with friends, I've built up a collection of more than 50 puzzles, most of them 1000-piece good-quality designs from companies like Gibsons, House of Puzzles and Ravensburger.

I'd like to lend these out to other people in the village, so if you'd like to borrow a jigsaw please get in touch. I'll email or send you a list to pick from. I can deliver within the village, you can keep it for up to a month, and when you're done, swap it for a new one. All completely free of charge.

You can contact me on 07776 170118, or (preferably) email jigsaws@robertambrose.com

Christchurch Book Club



A Book Club field trip was the order of the day this month. Some of us went to see author Elly Griffiths talk about her series of crime novels, and the release of her latest one "The Locked Room". Once again, her characters Ruth Galloway and DCI Nelson make an appearance in her 15th book in this series - all set around Norwich and Norfolk. We all found Elly really personable and her sometimes witty account of her background and life made for an interesting talk. (She spoke at Manea Village Hall in the afternoon and Ely Cathedral in the evening.)

The next meeting will be at 7.30 on 1st March at Glynan, Crown Road. All welcome.

Sheila Day

The WI met on 8th February. This was our resolutions shortlist meeting where we were asked to consider options about what the WI as a national body would campaign about. The WI represents a vast number of women and as such gets listened to! Our members in Christchurch felt that the plight of girls with Austistic Spectrum Disorder and Attention Deficit and Hyperactivity Disorder was something that needed attention. Whilst boys with these conditions are generally seen as presenting "troublesome" behaviour and therefore get support, girls tend to mask their symptoms and therefore get overlooked, with serious consequences for their well-being. Our recommendation will now go to the Isle of Ely Federation and then to the National Meeting when it will be included in the national vote for the final decision.



Cheese votes

(each member awarded each cheese up to 5 points)

Abergavenny goats cheese	24
Osseu-iraty	31
Singletons Parlick Sheeps milk cheese	34
Mexican Style Chilli Cheddar	31
Lactose-free cheddar	40
Cambozola	34
Blue Stilton	39
Manchego	36

After the "serious" part of the meeting our members then enjoyed an evening of cheese and wine - with votes being taken for the best loved cheeses...here are the results!

Our next meeting is on March 8th at 7pm when we are looking forward to hearing Judith Cornwell speaking about an aircraft crash near to March and the airman's family in Australia. This very local history topic promises to be a very interesting evening.

Visitors are always welcome for a nominal fee of £3. For more information please contact Sheila Day on 07946635908.



"Back In Business"

Christchurch Gardening Club

After what seems like an age, the Gardening Club held its first meeting last Tuesday the 15th February, at the Community Centre. Due to being unwell, Steve Hawthorn, Club Chairman, was absent from the meeting, but the rest of the committee took up the slack and the members were happy to be back. The old committee stood down and a new one elected, which was largely the same as the previous year. Steve Hawthorn: Chairman. Peggy Warby: Treasurer. Marion Hawthorn: Secretary. Committee members: Jenny Head, Sandra Kay, Tracy Day, Graham Warby. Jenny Farnsworth stepped down.

We are happy to welcome all our members back and welcome new member Carole Jones.

It is with sadness; I must report the deaths of two longstanding members of the club. Doris Powlik and David Yates, they will be missed.

Next month's meeting on Tuesday March 15th will be an open meeting; all welcome, and will feature a talk by Dave Wheatley on Petite Peonies. Dave has come highly recommended by long time member Kay Miller. So come along and check us out.

Steve

LUNCH BREAK

Lunch Break this month – 9th and 23rd March from 12 noon – 2pm, in the Community Centre.

IT'S FREE!

BYO Lunch. Catch up with old friends, make new ones. Chat over lunch with Tea or Coffee and relax. Or just come for a cuppa.

Always the 2nd and 4th Wednesdays of the month.
Our Covid plan is to be cautious.

Contact: Annie on 01354-638088



Indoor Short Mat Bowls

New club meeting every Monday 7-9pm at Christchurch Community Centre.

ALL WELCOME! (Spare bowls available to loan.)

For further details call Janet Harper on 07941 465319.

P R PARKER

Established 1978

General Building and Maintenance

Carpentry Glazing
Plumbing Painting
Plastering Decorating
Bricklaying Rendering
Roofing Guttering
Refurbishment
& Renovation

01354 638380

FREE ESTIMATES

All types ~ Houses ~ Flats ~ Shops ~ Offices



The Dun Cow



Green Lane, Christchurch, PE14 9PG
01354 638323

OPENING HOURS:

Mon-Thur 4.00 pm – 10.00 pm
Fri 3.00 pm – 11.00 pm
Sat Midday – 11.00 pm, Sun Midday – 9.00 pm

MONDAY FOOD

9.30 am till 11.00 am - Cooked breakfasts.

FRIDAY FOOD

4.30 pm till 8.00 pm - Phone to book your timed slot.

SATURDAY FOOD

4.30 pm till 9.00 pm -
A range of freshly cooked pizzas to eat in or takeaway.

A.R. CLINGO

FUNERAL DIRECTOR

Family Independant
Business

Private Chapel of Rest
Personal Attention

24 Hour Service

Full estimates given at all times

Golden Charter
Funeral Plans



Pinfold House
St. Peter's Road
Upwell, Wisbech
Phone 01945 772502

DR AC

- Any vehicle air conditioning
- 25 years experience
- Same equipment as a main dealer
- R134A service from £40 no vat
- R1234YF service from £95 no vat

Any Vehicle:

- Dent repair on any panel from £50 no vat
- No appointment necessary just call in.

Call 01354 638635 or Mobile 07932 601716.
Leave a message and I will call you back.

Laburnum House, March Road, Tipps End, PE14 9SG

Russell's Family Butchers

Family butchers for 5 generations. All of our meat and poultry is fresh free range from our own farm.

Visit us at our shop in Upwell or at our market stall in March (Saturdays) or Wisbech (Thursdays and Saturdays).

**97 School Road, Upwell, PE15 9EW
Tel: 01945 773419**

Poplar Arts & Crafts

Workshop places now available to book

- Friday 18th March 9.30–1.00
Brioche Knitting with Christine Brown
- Friday 25th March 9.30–4.00
An introduction to drawing with Tim Oliver
- Monday 4th April 9.30–12.30
An introduction to Alexander Technique with Chris McKay
- Saturday 9th April 9.30–4.00
Weaving on a simple loom with Frances Wyatt
- Thursday 14th April 2.00–5.00
Makeup secrets for the over 45s with Caroline Smith
- Friday 27th May 9.30–4.00
Dip pen and colourwash drawing with Tim Oliver
- Saturday 18th June 10.00–4.00
Flute Day with Frances Wyatt
- Friday 1st July 2.15–5.00
Alternative Therapies taster workshop with Jennie Mercer

For more information and booking go to
www.poplarartsandcrafts.co.uk
or phone Frances on 01354 638374

Dr AC

- Any vehicle air conditioning
- 25 years experience
- Same equipment as a main dealer
- R134A service from £40 no vat
- R1234YF service from £95 no vat

Any Vehicle:

- Dent repair on any panel from £50 no vat
- No appointment necessary just call in.

Call 01354 638635 or Mobile 07932 601716.
Leave a message and I will call you back.

Laburnum House, March Road, Tipps End, PE14 9SG

SUPPORT WORKERS YOU CAN TRUST



Pure Heart Homecare Limited

"PEOPLE WERE VERY
POSITIVE ABOUT THE
KINDNESS AND
RELIABILITY OF THE
STAFF" - CQC

- PERSONAL CARE • POST HOSPITAL CARE • DEMENTIA PATIENT CARE • PHYSICAL DISABILITY SUPPORT
- SHORT AND LONG TERM CARE • COMPANIONSHIP
- REHABILITATION

CONTACT US TODAY TO SEE HOW WE CAN HELP
T: 01945 773861 A: 130 WISBECH ROAD, OUTWELL, PE14 8PF
E: ADMIN@PUREHEARTHOMECARE.CO.UK W: WWW.PUREHEARTHOMECARE.CO.UK

Care at home... because home is where the heart is 

Outwell Timber

For all your Timber and Building Supplies

ISLE ROAD, OUTWELL
PE14 8TD
Tel: 01945 77 21 16

FENCING, PANELS, TRELLIS
TIMBER, PLYWOOD, DECKING

SAND, BALLAST, GRAVEL

SCREWS, NAILS, BOLTS

PAINT, SILICONE, HAND TOOLS

LOCKS, ELECTRICALS, PLUMBING,
GUTTERING
UNDERGROUND PIPE & FITTINGS

CEMENT, MULTIFINISH, PLASTERBOARD

Welle Cinema
Presents

 creative
ARTS EAST



Sunday 6th March, 2pm
Three Holes Village Hall

12A

Tickets £3.50 (no need to book) | Doors open 1.30pm
Enquiries: Anne, 01354 638405 | Bar and refreshments
www.threeholesvillagehall100.org.uk

Generously supported by Local Authorities and our principle funders:



Find out more by visiting
www.creativeartseast.co.uk



STOVELINER

**INSTALLATION OF MULTI FUEL
WOOD BURNING STOVES.
SERVICE & MAINTENANCE.
FULLY INSURED.
HETAS CERTIFIED.**



**COVERING CAMBRIDGESHIRE, NORFOLK,
SUFFOLK, BEDFORDSHIRE, HERTFORDSHIRE,
ESSEX AND LONDON.**

STOVELINER@OUTLOOK.COM

07940 001 830

FIND US ON SOCIAL @STOVELINER

Beauty Treatments By Jane

N.V.Q. – i.b.d. – Babtac

**LCN Microdermabrasion Facials
NEW Oxygen regeneration Facials - less
outlay than Botox (a celebrity favourite)
NEW - Non-surgical firming lift and tone
St.Tropez Spray tanning
Gel pedicures
Shellac manicures
Week-end & semi permanent
eyelashes**

**Rose Cottage,
Christchurch
Telephone: 01354 638378**

Well - I didn't know that! Ely History

It was a day in Ely with a visiting nephew - doing the usual things, Oliver Cromwell's House and the Cathedral...when he spotted this plaque. I was intrigued. Certainly William Wolsey would have been familiar with our village as we would have come under Upwell at the time. So I dug a little...

Following the accession of Mary I of England to the throne in 1553, there was an effort to return the country to the Roman Catholic faith. During this time, which became known as the Marian Persecutions, two men from this area, constable William Wolsey and painter Robert Pygot were accused of not believing that the body and blood of Christ were

present in the bread and wine of the mass (holy communion). For this "heresy" they were condemned by the bishop's chancellor, John Fuller, on 9 October 1555. On 16 October 1555 they were burnt at the stake probably on the Palace Green in front of Ely Cathedral. One report states, "The two martyrs were led to the Cathedral Green and chained to the stake. An official carried a huge sheet containing copies of the banned English New Testament which were also to be burnt. Wolsey called on God to forgive his enemies and the two men grabbed a book each and in defiance began reciting Psalm 106 *'Praise the Lord. Give thanks to the Lord, for he is good; his love endures forever'* as the flames began to leap around them."

It seems there was a dilemma in the city about whether to have a memorial to this event. In *The Book of Ely* published in 1990, Blakeman writes that "permission was not given" for a memorial to the martyrs to be placed on Palace Green. In 2011, a plaque recording this martyrdom event was erected on the north-east corner of Palace Green by the City of Ely Perspective.



Church News

LENT is a very special time for us in Christchurch, and we hope you will be able to join us in some or all of our planned events.

ON ASH WEDNESDAY, 2nd March, there will be a service of "Imposition of Ashes" at 7pm at Doddington. (See page 24)

Our **LENT PRAYER PROJECT** will go ahead as usual, encouraging us to pray daily for our community, in the privacy of our own homes. If you would like to join in with this, ask for a leaflet which has ideas for prayer for each week in Lent, or pick one up from the back of Church. Over the whole of Lent, we pray for every person living in our area, and for our school and other things that go on.

COLLECTING FOR THE MARCH FOOD BANK. There will be a box in the Church for anyone who wishes to donate non-perishable food items, or toiletries, to the March Food Bank as part of their Lent observance. The Church is open on Thursdays 2-3pm, and on Sundays when we have a service. If you can't get to the church, just leave a bag of your items at Grasshopper Cottage, 5, Upwell Road (at the Lay-by), and they will find their way into the Church box.

LENT LUNCH. After the Morning Service on the 27th March (Mothering Sunday), we will be having a Lent lunch (soup, bread and cheese) with donations going to The Ferry Project - a local charity for the Homeless, Everyone - all ages - welcome. Either stay after coming to the service, or come along at 11.45am and join us then.

Coffee, Cake and Chat every Thursday 2-3pm in the Church.

CHURCH SERVICES

THIS MONTH. For the time being, we will still be continuing to observe social distancing within the church building and strongly encourage mask wearing. Our March services are shown below.



Complementary to the live services, throughout March (except the 27th) we will continue to host a weekly Sunday service on Zoom for those that can access it, and also by telephone for those that don't have a phone that supports Zoom. This will be from 11 until about 11.45, details for access can be obtained from Sheila Day on 07946 635908 or via Facebook messenger.

Check out our church noticeboard, or the Christchurch community Facebook page for any further news.

Helen and Andy

Services in our Benefice during March. All services at 10.30am unless otherwise stated.

6th March - Holy Communion, Manea
6th March - Morning Prayer, Wimblington
13th March - Evening Prayer, Christchurch (15.30)
13th March - Holy Communion, Doddington
20th March - Morning Prayer, Manea
20th March - Holy Communion, Wimblington

Mothering Sunday

27th March - Holy Communion followed by Lent Lunch
27th March - Morning Prayer, Doddington

Thoughts from the Rectory

A REST CAN DO US ALL THE POWER OF GOOD.

How many gadgets do we have that need regular charging? Mobile phone, laptop, hand torch, vacuum cleaner - and to list my power tools would take too long. When you come to think of it, there are so many things in our life that need charging. It can be a real bind when one of these is out of power and we didn't notice that it was running down; just when we need it most, the gadget just shuts down. So, with a recharge, our mobile gadgets are up and running and our lives may continue on their merry old way.

At times our lives are like our gadgets, where we can experience that running down feeling, that running-on-empty feeling, where we have no energy and even less motivation. Now all sorts of things can cause these feelings; lethargy, health, family worries, financial concerns, work problems. We are at real risk of shutting down from the world around us because of too much stress. We need to take time to 'recharge the batteries'. In some cases, a trip to the doctor's might be needed, or a good honest chat with family or a friend to share the concerns; or you may just need time out with a

good book, watch, or listen to, a TV or radio program, or go on a good long walk in the country or by the sea. Whatever our circumstances, we know that life in the times we are living in can be stressful and it's important to take time to look after yourself and not feel guilty at taking that time out to rest.



After an awkward hard day in the Benefice (yes believe me, I do have them), I often relieve the stress by remembering the lyrics of a hymn that means something to me.

'What a friend we have in Jesus, all our sins and griefs to bear! What a privilege to carry Everything to God in prayer!'

When we are running out of energy or when we doubt our ability to keep going, we can talk to God and tell Him all about it and when we tap into that kind of strength we can be filled with a different power. His power.

Keep well Keep safe.

Ian.

Pancake Day - 1st March

Pancake Day, or Shrove Tuesday, is the traditional feast day before the start of Lent on Ash Wednesday. Lent – the 40 days leading up to Easter – was traditionally a time of fasting and on Shrove Tuesday Anglo-Saxon Christians went to confession and were “shriven” (absolved from their sins). A bell would be rung to call people to confession. This came to be called the “Pancake Bell” and is still rung today.

Shrove Tuesday always falls 47 days before Easter Sunday, so the date varies from year to year and falls between February 3 and March 9. In 2022 Shrove Tuesday will fall on 1st March. Shrove Tuesday was the last opportunity to use up eggs and fats before embarking on the Lenten fast and pancakes are the perfect way of using up these ingredients.

The pancake has a very long history and featured in cookery books as far back as 1439. The tradition of tossing or flipping them is almost as old: “And every man and maide doe take their turne, And tosse their Pancakes up for feare they burne.” (Pasquil’s Palin, 1619).

In the UK, pancake races form an important part of the Shrove Tuesday celebrations – an opportunity for large numbers of people, often in fancy dress, to race down streets tossing pancakes. The object of the race is to

get to the finishing line first, carrying a frying pan with a cooked pancake in it and flipping the pancake as you run.

The most famous pancake race takes place at Olney in Buckinghamshire. According to tradition, in 1445 a woman of Olney heard the shriving bell while she was making pancakes and ran to the church in her apron, still clutching her frying pan. The Olney pancake race is now world famous. Competitors have to be local housewives and they must wear an apron and a hat or scarf. Each contestant has a frying pan containing a hot pancake. She must toss it three times during the race. The first woman to complete the course and arrive at the church, serve her pancake to the bellringer and be kissed by him, is the winner.



Olney Pancake Race. Author: Robin Myerscough. Licensed under the Creative Commons Attribution 2.0 Generic license.

PROPOSED INCINERATOR TO BE BUILT IN WISBECH



“I am working with a wide number of groups, including Fenland District Councillors and Wisbech Councillors, to oppose the appalling Wisbech Incinerator proposal. As part of the planning process the council has a role to play in terms of assessing the adequacy of the consultation by the developer, which is given weight by the Planning Inspector. As such I have written to Fenland District Council to highlight flaws in this consultation and how they can reflect this in their response to the Planning Inspector. I hope they will take on board the issues with the consultation I have raised as a constituency Member of Parliament. I look forward to continuing to work with local councillors who I know strongly oppose this scheme”.

Steve Barclay MP

WHAT IS ASH WEDNESDAY? (2nd March)

Ash Wednesday — officially known as the Day of Ashes — is a day of repentance, when many Christians confess their sins and profess their devotion to God.. It is predominately observed by Catholics (and the Orthodox, albeit on a slightly different calendar), but Christians of all denominations can and do participate, including many Anglican churches, as do the Anglican churches in our Benefice, "Six Fen Churches". Most non-conformist churches do not keep Ash Wednesday or Lent.



During a Mass (Catholic or Orthodox), or a Holy Communion service (Anglican) a priest places the ashes on a worshipper's forehead in the shape of a cross. The ceremony, which also can be performed by a minister or pastor, is meant to show that a person belongs to Jesus Christ, and it also represents a person's grief and mourning for their sins — the same sins that Christians believe Jesus Christ gave his life for when he died on the cross. These ashes are usually made from the burning of the Palm Sunday Crosses from the year before.

Each year, Ash Wednesday (2nd March 2022) marks the beginning of Lent and is always 46 days before Easter Sunday. Lent is a 40-day season (not counting Sundays) marked by repentance, fasting, reflection, and ultimately celebration. The 40-day period represents Christ's time of temptation in the wilderness, where he fasted and where Satan tempted him. Lent asks believers to set aside a time each year for similar fasting, marking an intentional season of focus on Christ's life, ministry, sacrifice, and resurrection.

Source: Various

Queen's Platinum Jubilee - 2, 3, 4, 5 June 2022

Celebrations for Christchurch Residents



(Again, these are subject to change but will endeavour to keep you informed as things are confirmed.)

Thursday 2 June (Evening) —Queenie Quiz, The Dun Cow.

Friday 3 June (Afternoon)—Collaborative Corgis Dog Show, The Dun Cow Garden. (List of classes to follow.)

Friday 3 June (Afternoon/Evening)—A Right Royal Buffet and Ceilidh, Christchurch Community Centre.

Dancing to 'Frog on a Bike' There will be a small charge for this event (to include food and dancing) - details to follow. So that we can accommodate as many Christchurch residents as possible, this is open to

CHRISTCHURCH RESIDENTS ONLY IN THE FIRST INSTANCE.

Saturday 4 June (Afternoon)—Platinum Tea Party, The Dun Cow.

Saturday 4 June (Evening) —Vinyl Night, The Dun Cow.

Sunday 5 June (Morning)—Royal Breakfast, The Dun Cow.

Sunday 5 June (Afternoon)—Street Party & Fun Day, Christchurch Community Centre and Recreation Ground.

Sunday is a free event for CHRISTCHURCH RESIDENTS ONLY. Games, Entertainment, Amusements, Hog Roast, Bouncy Castles.

The bar will be open for you to **purchase drinks** but please feel free to bring your own, along with a picnic, seating, etc. and enjoy an afternoon on fun and celebration.

Vaccine confidence survey toolkit for partners

Researchers Alison Ward and Cristina Devecchi from the University of Northampton have been commissioned by Cambridgeshire and Peterborough Clinical Commissioning Group, in association with Cambridgeshire County Council and Peterborough City Council to research into reasons for vaccine hesitancy in Cambridgeshire and Peterborough.

They are reaching out to members of the public about their experiences of the vaccine, what information they have received and how this has supported their decision making about whether or not to take up the vaccine. The aim of this research is to gain insight that could support future delivery of the covid vaccine or other health initiatives, particularly with groups who may experience health inequalities.

A short online survey has been created that can be accessed through the following link or via the QR code below: Link: <https://northampton.onlinesurveys.ac.uk/covidvaccine>

The survey will take about 10 mins to complete and is anonymous.

Cristina Devecchi at Cristina.Devecchi@northampton.ac.uk Or Alison Ward on 07740 716551 or email: Alison.ward@northampton.ac.uk



Royal
Horticultural
Society

NATURE NOTES: MARCH

Continue to clean out and top up bird feeders. Place whole peanuts in a metal mesh holder to avoid a choking hazard for young birds. Sow or plant a wildflower meadow. As the weather warms up, frogs and toads emerge from their overwintering sites. Look out for amphibian spawn in ponds or ditches; never in running water. Frog spawn is usually in jelly-like clumps; toad spawn is in longer individual strands; newt spawn is laid individually on pondweed stems. Remember to leave some weeds in lawns, like dandelions, which are a valuable source of nectar and pollen.



Christchurch Plant Sale Heron Fundraiser

Saturday 14 May 2022
10 till 1pm

The Dun Cow, Christchurch

We are looking for donations of plants and shrubs for this fundraiser, so if you have any you would like to donate, please contact Sandra Kay on 01354 638478.

All profits from plants sold will go towards funding your village magazine.

Useful Telephone Numbers

Age UK Cambridgeshire	0300 666 9860
Alzheimer's Society (Fenland)	01945 580480
Churchwarden - Mr Andy Day	07740 056563
Citizens' Advice Bureau, Wisbech	03442 451292
Community Car Scheme (to book a journey)	07902 316360
Community Centre Bookings (Bryan Burfield)	07918 664402

TRY OUR NEW WEBSITE: <https://christchurchccc.co.uk/>

Community Fire Safety Officer	07717 858166
District Councillor - Will Sutton	01354 638025
District Councillor - Michelle Tanfield	07908 707129
Electricity Faults - UK Power Networks	105
FACT	01354 661234
Fenland District Council	01354 654321
Floodline	0845 988 1188
Library - March	0354 045 5225
National Debtline	0808 808 4000
NHS	111
Norfolk Dial-a-Ride	01553 770310
Parish Clerk - David Gibbs	07932 191050
Parish Councillor - Jill Bliss	01354 638343
Parish Councillor - Sharon Pomeroy	07837 407536
Parish Councillor - Roger Gladwin	01354 638538
Parish Councillor - Geoff Harper	01354 638681
Parish Councillor - James Hughes	01354 638310
Parish Councillor - Peter Owen (Chair)	01354 638847
Parish Councillor - Kay Miller	01354 638232
Police - PCSO Sue Clarke	07738 025220
Police - Emergency	999
Police - Non Emergency	101
Telephone Preference Service	0345 070 0707
Townley School	01354 638229
Trading Standards	03454 040506
Train Information	03457 484950
Upwell Health Centre (and out of hours)	01945 773671
Upwell Health Centre - Pharmacy	01945 774934
Veterinary Centre - The Crossings (D'Mkt)	01366 382219
Vicars - Ian & Lynda Brady	01354 740627
Water Emergencies	03457 145145

Club Contacts

Art Club - Jan Clifford	01354 638217
Book Club - Sheila Day	07946 635908
Craft Club - Sandra Lloyd	01354 638956
Gardening Club - Marion Hawthorn	01354 638230
Short Mat Bowls Club - Janet Harper	01354 638681
WI - Sheila Day	07946 635908
Jazz Club - Cat Johnson	musiciancat@hotmail.co.uk
Christchurch Eco - Nate Lansdell	07568 192940
Christchurch Stargazers - Mark Andrews	07425 165415

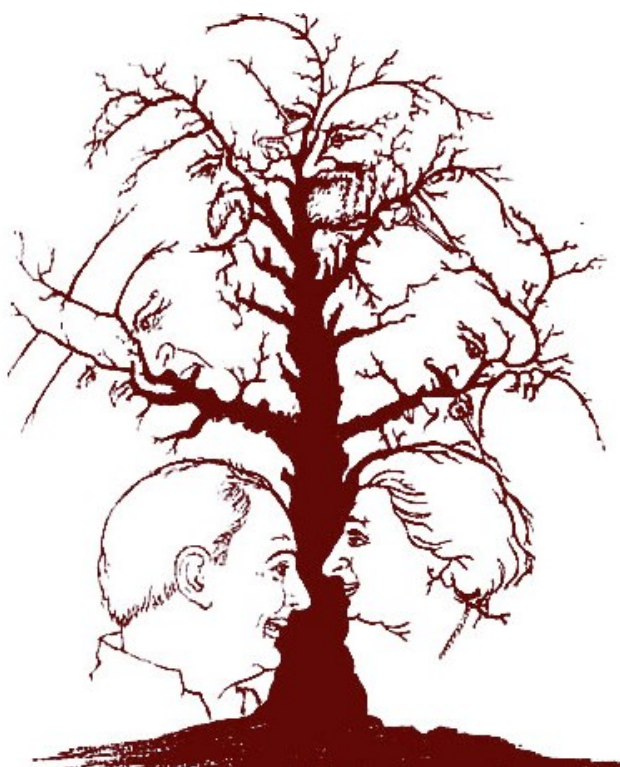
Answers from Kids Corner on Page 9

1. Cabbage/colcannon, soda bread, Irish stew and green ice cream!
2. Harp
3. Mischievous elf that dresses in green
4. A food dish made with potatoes mixed with cabbage/kale/spring onions
5. Slainte!

Answers to Puzzles on Page 9

1. Answer: 6. Read every row as follows:
 $(3 + 2) \times 2 = 10$
 $(1 + 9) \times 2 = 20$
 $(0 + 8) \times 2 = 16$
 $(7 + 5) \times 2 = 24$
2. Answer: Shape 3. All the others contain equal portions of each.
3. Answer: 1 and 2. Every number in the bottom row is the number above it minus 3.

Believe it or not, there are 10 faces within this tree, can you spot them all?





MORE TREES PLEASE!

Why we need to double UK tree cover -

Source: <https://friendsoftheearth.uk>

Friends of the Earth

Trees play an incredible role in combating climate chaos by removing planet-wrecking emissions from the air around us. Despite their importance, just 13% of the UK's total land area has tree cover (Compared to an EU average of 35%). We believe one of the best solutions to protect our environment and achieve net zero emissions (removing as many emissions as we produce) is to double the UK forest, but Government targets currently fall well short.



Nature is the ultimate carbon capture and storage machine. That's one reason we should double tree cover in the UK, says Craig Bennett, Friends of the Earth's chief executive (pictured).

"Craig. The science on climate change is now so stark, surely Friends of the Earth should be working on that and nothing else. I mean, protecting biodiversity is important, but we have to stop climate change first".

"Craig. I am so worried about the ecosystem collapse – surely Friends of the Earth should focus on that, and leave the fight of climate change to others". These comments were made to me by two people I respect enormously, each with a long history in the environmental movement.

Funny how compartmentalising the world can stop us seeing the big picture. The truth is, to see runaway climate change and ecosystem collapse as separate issues is artificial. Both are symptoms of humanity's failure to respect and live fairly within environmental means. We have no hope of stopping climate change unless we can restore the abundance of nature. And we have no hope of stopping the crisis in biodiversity unless we tackle climate change and – more to the point – the root causes of both.

Doubling the number of trees could deliver annual carbon sequestration equal to around 10% of the UK's current greenhouse gas emissions.

No room to plant a tree? Check these websites and find out what you can do to help.

<https://www.woodlandtrust.org.uk>
<https://www.nationalforest.org>

<https://ecologi.com>
<https://www.worldlandtrust.org>

<https://rippleafrica.org>

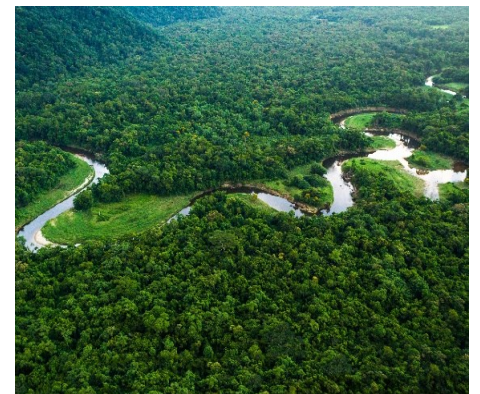
Earth has more tree species than we thought!

There are 14% more tree species than previously thought, according to what researchers are calling the first "scientifically credible" estimate.

Of the 73,300 estimated species, the researchers predict there are 9,200 that are yet to be discovered. But most rare species are in tropical forests, fast disappearing because of climate change and deforestation. The study is based on a database of tens of millions of trees in more than 100,000 forest plots around the world.

The researchers used statistical techniques to predict the likely number of tree species, correcting for gaps in existing data. The findings suggest more must be done to protect the incredible life forms needed for food, timber and medicine and to fight climate change by sucking carbon dioxide from the air.

<https://www.bbc.co.uk/news/science-environment-60198433>



The Amazon (pictured) is a treasure trove of rare plants.

PC Snippets

The Annual Parish Meeting will take place on Tuesday 22 March in the Community Centre at 7.00 for 7.30 pm and everybody is welcome. Tea and coffee will be served on arrival.

A very short Snippets this month - Dave Gibbs, our Parish Council Clerk, has written an article about the **ANNUAL PARISH MEETING. Come along to that and ask your questions!**

At the PC meeting in February, on-going issues were discussed, such as the street lights and roadside drains. Some members of the PC had been to inspect other places which have Outdoor Gym Equipment and were pleased to find lots of it in other parishes. A zip wire was a big hit with one Counsellor! Sowatch this space! Grants can be obtained for purchase of equipment.

Much talk about road safety and marker posts on the 16 Foot Bank. A high number of hefty vehicles have been travelling through the village. In response to comments by members of the Parish, the PC agreed to ask the Clerk to write to certain Truck companies and ask them to avoid taking short cuts through the village. Nobody had any problem with local delivery vehicles or farm vehicles using the through route to reach their land in the village.

Annie Nason

Christchurch Past, Present and Future

Join us at the Annual Parish Meeting to hear from speakers on topics that affect us all in Christchurch. Learn about the roles of the different councils and statutory agencies whose decisions affect our daily lives. Confirmed speakers include:



Jenna Brame, Cambridgeshire ACRE's Rural and Community-Led Housing Development Officer

Jenna will explain how we could build affordable houses exclusively for people from the parish of Christchurch and neighbouring villages, giving our children and grandchildren that first step into independent living within their own community, or enabling older residents to

downsize into a more manageable property.



Robin Sutton, Chairman of the Cambridgeshire Neighbourhood Watch Association

As Neighbourhood Watch celebrates its 40th anniversary this year, Robin will tell us about their new initiatives and their wider role working alongside the Police and the District Council in crime prevention.



Cambridgeshire Police

We hope to have a senior Police officer to talk about the challenges of policing in Fenland and the way in which the different parts of Cambridgeshire Police work together to protect us.

Christchurch Parish Council

Members of the Parish Council will highlight some of their achievements during the pandemic and their plans for the future, including the creation of a new open space in the village.



Christchurch Community Centre and its user groups

The Community Centre Management Committee will explain how they operate and invite the various clubs who use the building to say a few words about their work.

The Annual Parish Meeting will take place on Tuesday 22 March in the Community Centre at 7.00 for 7.30 and everybody is welcome. Tea and coffee will be served on arrival. We look forward to seeing you there.

Dave Gibbs, Clerk



Isle of Ely Federation of WIs Centenary Show

At Christchurch Community Centre
Thursday 24th March 2022

1.00pm - 4.30pm
Entry free

Show casing the many skills of our members.



What does it mean when you can't see the wood for the trees?

If someone can't see the wood for the trees in British English, or can't see the forest for the trees in American English, they are very involved in the details of something and so they do not notice what is important about the thing as a whole.

Any views expressed in The Heron do not necessarily reflect the views of The Heron Editorial Team. The team aim to provide a balanced view of village opinions where such views are expressed. We reserve the right to edit any submissions where we feel this is appropriate.

