

The Heron

Community Magazine

May 2022

Delivered to homes in Christchurch, Euximoor and Tipps End

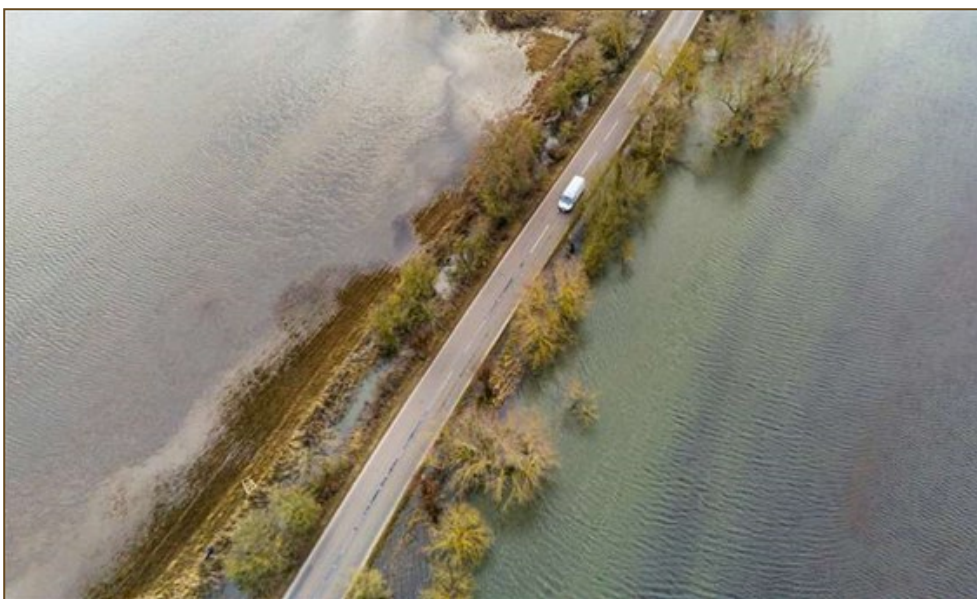
No.97

WELNEY WASH FLOOD DEFENCES ANNOUNCED

With predicted road closure dates. See page 28

In this issue!

Platinum Jubilee Itinerary	2
Useful Telephone Numbers	3
Your Letters	3
Advertising/Diary Dates	4
Editorial/Heron News	5
I'm A Burglar!	6
Christian Aid Big Breakfast	6
Recipe/Point of View	7
Neighbourhood Watch	7
We're Hiring! Heron Jobs	8 & 9
Scarecrows!/Fun-Raiser!	8 & 9
Top 10 & Events for May 2006	10
Community Info/FDC	10
Church News/Rectory	11
Country Music Fans	12
Townley School	13
Broken Dog, for a Broken Man	14
Kids Page	15
Speechless!	16
Clubs	17-18
PC Snippets	19
Nature Notes/Weird Water!	27
Welney Flood Defence	28



EDITORIAL TEAM:

Editorial Team Leader - Annie Nason

Treasurer, Advertising Manager, Publisher - Elaine Reed-Hughes

Editorial Team Members: Sue Norman, Liz Scott, Elaine Reed-Hughes

Deliveries Manager - Annie Nason

Support—Lewis Bennett (IT), the Delivery Team and Printers

ENQUIRIES

editor@theheron.info Tel: 01354 638088

adverts@theheron.info Tel: 01354 638310



Website: www.theheron.info



Christchurch Community Centre

in association with

Christchurch Village Church

and



The Dun Cow



presents

Christchurch Platinum Jubilee Celebrations

Thursday 2 June - "Queenie Quiz" at the Dun Cow

Starts at 6.30pm £2.00 per person. No more than 4 to a team. Nibbles provided.

Friday 3 June - "Fun Dog Show" at the Dun Cow

£2.00 per class (payable on the day). Judging starts at 12pm. Hot Dogs for humans on Sale!

LIMITED EVENING MENU AVAILABLE ON THIS DAY.

Class categories as follows:

Any Variety: Gundog & Hound, Working & Pastoral, Terrier & Toy, Utility, Veteran (over 7 years)
Best Handler, Best Young Handler, Handsome Dog, Prettiest Bitch, Best Condition,
Best Rescue/Rehome, Best 6 Legs, Best Sausage Eater. Fancy Dress (Dog & Handler),
Best Christchurch Dog (Dogs from the village only)

Tel: 07719 277937 for more information about the Dog Show.

Friday 3 June - "Buffet and Ceilidh" at the Community Centre

Doors and bar open and buffet served from 6.30 pm. Dancing to "Frog on a Bike" from 7.30pm till 11.30pm.

There will be a minimal charge of £3.00 per ticket (to include food and dancing).

Numbers are limited due to hall capacity so first come, first served.

Payment on booking please. **Ticket Entry Only.**

For Tickets please call Pat Rigby on 07776 142642 or Geoff Harper on 01354 638681 or 07504 691509.

Saturday 4 June - "Platinum High Tea" at the Dun Cow

Starts at 3.00pm. £17.50 per person - small deposit required when you book.

WEAR SOMETHING RED, WHITE AND BLUE.

BOOK EARLY AS LIMITED SPACES. TEL: 01354 638323.

Saturday 4 June - "Vinyl Music Night" at the Dun Cow

Starts at 7.30pm.

Sunday 5 June - "Royal Breakfast Special" at the Dun Cow

Starts at 9.30am till 11.30am.

BOOK AT TIME SLOT TO AVOID DISAPPOINTMENT. TEL: 01354 638323.

Sunday 5 June - Christchurch "Songs of Praise" at the Community Centre

Starts at 11.30 till 12.30pm. Come along and sing in honour of Her Majesty.

Sunday 5 June - From 2.00pm. Street Party and Fun Day at the Recreation Ground and Community Centre

Please bring along a picnic and enjoy the afternoon's festivities.

Fun for all the family - entertainment, bouncy castles, kids games, races, hog roast (limited so first come, first served). The Community Centre bar will be open all afternoon for you to be able to purchase drinks.



Useful Telephone Numbers

Age UK Cambridgeshire	0300 666 9860
Alzheimer's Society (Fenland)	01945 580480
Churchwarden - Mr Andy Day	07740 056563
Citizens' Advice Bureau, Wisbech	03442 451292
Community Car Scheme (to book a journey)	07902 316360
Community Centre Bookings (Bryan Burfield)	07918 664402
Community Fire Safety Officer	07717 858166
District Councillor - Will Sutton	01354 638025
District Councillor - Michelle Tanfield	07908 707129
Electricity Faults - UK Power Networks	105
FACT	01354 661234
Fenland District Council	01354 654321
Floodline	0845 988 1188
Library - March	0354 045 5225
National Debtline	0808 808 4000
NHS	111
Norfolk Dial-a-Ride	01553 770310
Parish Clerk - David Gibbs	07932 191050
Parish Councillor - Jill Bliss	01354 638343
Parish Councillor - Sharon Pomeroy	07837 407536
Parish Councillor - Roger Gladwin	01354 638538
Parish Councillor - Geoff Harper	01354 638681
Parish Councillor - James Hughes	01354 638310
Parish Councillor - Peter Owen (Chair)	01354 638847
Parish Councillor - Kay Miller	01354 638232
Police - PCSO Sue Clarke	07738 025220
Police - Emergency	999
Police - Non Emergency	101
Telephone Preference Service	0345 070 0707
Townley School	01354 638229
Trading Standards	03454 040506
Train Information	03457 484950
Upwell Health Centre (and out of hours)	01945 773671
Upwell Health Centre - Pharmacy	01945 774934
Veterinary Centre - The Crossings (D'Mkt)	01366 382219
Vicars - Ian & Lynda Brady	01354 740627
Water Emergencies	03457 145145
Club Contacts	
Art Club - Jan Clifford	01354 638217
Book Club - Sheila Day	07946 635908
Gardening Club - Marion Hawthorn	01354 638230
Short Mat Bowls Club - Janet Harper	01354 638681
WI - Sheila Day	07946 635908
Jazz Club - Cat Johnson	musiciancat@hotmail.co.uk
Christchurch Eco - Nate Lansdell	07568 192940
Christchurch Stargazers - Mark Andrews	07425 165415

Your Letters

Dear Editor,

Please would you put this request in your magazine; I am the Poppy Appeal Organiser for Christchurch and Manea. I am now retiring and I'm looking for a replacement to continue this worthwhile charity.



For further information please contact me Lesley Kennedy on mob. 07947 143864 or Landline 01354 680401.

Dear Ed

On reading last month's comments on Ash Trees, I was interested in the part of the trees becoming a safety issue. If they are on Parish land, would it be their responsibility? If so, why have they not maintained the trees on the opposite side of the playing field, where people actually live?

Perhaps they would consider this as an "essential job" for next year's budget. PLEASE!!

From

'Person who had unmaintained tree, from playing field, fall on my shed'.

(Name and contact details supplied but withheld on request)

Dear Editor,

There are a lot of hedgehogs in the village this year. There is no need for any of us to use slug pellets. Hedgehogs love to eat slugs and snails!

Slug pellets kill hedgehogs, birds and other wildlife that depend on our pests for food.

Can we please not use slug pellets?

Anne Williams



Please remember that no dogs are allowed on the playing field. Thank you. Your co-operation is much appreciated.

Advertising in the Heron

Quarter Page (14cm High x 9.5cm Wide)

Portrait Format

6 x issues £50

12 x issues £90

Eighth Page (6.5cm High x 9.5cm Wide)

Landscape Format

6 x issues £34

12 x issues £64

Please contact adverts@theheron.info or phone Elaine on 01354 638310.

Advertisers - all our advert rates and conditions can be found on our website www.theheron.info. Business advertisers can book a series of 6 or 12 adverts, paid in advance. Adverts for village fundraising events, personal announcements, or small private ads are usually free.

Do you know someone who would like to receive a Heron each month, who doesn't live in the village? Contact us at adverts@theheron.info and we will send them a subscription form.

The cost is £25.00 per year (including P&P).

Diary Dates

DATE	EVENT	TIME	PLACE	PAGE
Tues 3 rd	Mobile Library	12 noon	Lay-by (Fen View)	10
Sun 8 th	Welle Cinema	2pm	3 Holes V-Hall	22
Sun 8 th	Evening Prayer	3.30pm	Church	11
Mon 9 th	PC Annual Meeting	7.30pm	CCC	19
Tues 10 th	Art Club	1.30-3.30pm	CCC	17
Tues 10 th	WI	7pm	CCC	18
Weds 11 th	Lunch Break	12-2pm	CCC	18
Sat 14 th	Plant Sale	10am-1pm	Dun Cow	5
Sun 15 th	Christian Aid Breakfast	8.30 – 11am	CCC	6
Tues 17 th	Gardening Club	7pm	CCC	18
Sun 22 nd	Church Service	10.30am	Church	11
Sun 22 nd	Jazz Club	12.30-2.45pm	CCC	
Tues 24 th	Art Club	1.30-3.30pm	CCC	17
Tues 24 th	Book Club	7.30pm	Pear Tree Farm	17
Weds 25 th	Lunch Break	12-2pm	CCC	18
Every Mon	Short Mat Bowls	7-9pm	CCC	18
Every Weds	Chair-based exercise class Kathleen Henderson	10-10.50am 07880 543821	CCC	
Every Thurs	Coffee, Cake & Chat	2-3pm	Church	
M,T,W,TH	Mobile Post Office	Various	Lay-by (Fen View)	10
ALSO CHECK DUN COW EVENTS p21				

At the time of going to press, all information is as accurate and up to date as we can make it. Changes and updates may be published subsequently. All information contributed by outside agencies, including dates etc., will be assumed to be correct.

NB as a matter of courtesy no content from the Heron should be used without prior permission.

Editorial

Well what a mixed bag this month. We are excited for the up and coming plant sale (see advert right). This has become a Christchurch tradition in one way or another but this year, all proceeds will go towards funding the running of your village magazine. As last year, we will be holding it at the Dun Cow - who have very kindly offered to sell refreshments. We hope to have a vast array of plants and shrubs for you to purchase and we very much look forward to seeing you there on 14th May.

Further on in the magazine you will find a historical article about a Scarecrow Festival that the village used to host each year for a while (see page 8). Coincidentally, we talked a few months ago about doing something similar later on in the year and plans are afoot to see this happen - just for fun - around August time (see page 9) - so **SAVE THE DATE!**

A lot of you won't be aware of just how much time and effort goes into producing the magazine each month so we thought we'd share with you the various jobs that make up "The Heron" - getting it from the idea stage (at monthly Editorial meetings) to your doormat! See pages 8 and 9. If you like the sound of any of the jobs, and you have time to spare, we would love to hear from you.

It's great to hear that the Parish Lunch Committee have set a date for their next event. Saturday 2 July they are hosting an Afternoon Tea, with entertainment, for the Over 65 folk in the village - see page 12. So if you fall into this category and you fancy coming along, **SAVE THE DATE!**

Sadly, very soon, we will be saying goodbye to Andy & Sheila Day who have been stalwarts of the village - both being particularly involved in the Church (Andy being Church Warden for many years) and, of course, the Heron*.

Of course, back in the day, they were famous for their August Bank Holiday Shindigs - where they opened up their back yard to all villagers - who were invited along to let their hair down for an evening. I think most village residents around at that time will remember the throbbing music, on the last Saturday in August, coming from Padgett's Road end of the village!

Heron News

HERON FUNDRAISER PLANT SALE

THE DUN COW
SATURDAY 14 MAY 2022
10AM-1PM

Donations of plants and raffle prizes would be gratefully received. Please Contact Sandra Kay on 01354 638478.

We hope you will come along and support your village magazine!

Tea and Coffee available from the pub.

Doorstep deliveries, of Sheila's famous sausage rolls during lockdown, kept some of us going during the darkest of days in 2020/21 and for those we were very grateful!

WE WILL MISS YOU BOTH and thank you for all you did for our village. We wish you all the very best in your new village and your new home in Northamptonshire!

Elaine Reed-Hughes

*THANK YOU ANDY!

Huge thank you to Andy Day - who risked his life every month, on his bicycle, to get The Heron delivered to all the folks along the 16ft Bank and Poulter's Drove. You're a star and will be sadly missed!



Good luck to you and Sheila on your new adventure!

From all your friends at The Heron

Copy Deadline - The deadline for copy for the **June** edition of the Heron is **Thursday 26 May**.

Letters to the Editorial Team

The Editorial team welcome letters from its readers. Please email letters to: editor@heron.info or post them to *The Editor of The Heron, Grasshopper Cottage, 5 Upwell Road, Christchurch, PE14 9LF.*

PLEASE NOTE: Letters will only be considered for publication if they are accompanied by name and contact details - names will be published, but not contact details. The Heron will not share any contact details unless given permission.

The team look forward to hearing from you!

I am a Burglar! It's what I do!

In view of a presentation at the Annual Parish Meeting last month, in which Crime Awareness was emphasised, The Heron thought it would be good to reprise Andy's article from August 2019. It's a reminder to us all to be vigilant.

Houses, sheds, garages. I'm not bothered what I break into, as long as there's something to steal and I don't get caught. I've been caught before; a few times and I've been to prison. I didn't like jail and I don't want to go back there, but I'm a burglar. It's what I do.

What am I looking for, you may ask? Easy targets I don't want to spend ages trying to get in to a house and not managing it, and I don't want to get caught, so if there's someone at home I'll go to the house where there's nobody. That house over there looks like an easy target; there's a nice high hedge which I can hide behind and nobody can see me from the road and wonder what I'm up to. There's no car on the drive and the curtains are open. The lights are all off and it's nine o'clock at night; they must all be out, but for how long? I might come back tomorrow and see if it's the same. They're probably on holiday. I really don't want to bump into anyone in the house, I don't want anyone calling the police on me.

Some people are getting too clever nowadays and trying to fool us by making their house look like they're in when they're not. Putting things like timers on their lights and these devices that flash and make it look like there's a telly on in the house. Well, they put me off. If I'm not sure, I can't take the risk. I'll go somewhere else. The places I really avoid are those that have alarms and CCTV. If someone has gone to the trouble of putting those in, they really have protected their house and I reckon they will also have made sure that the locks on the doors and windows are strong. Even worse if they've got locked gates so I can't get around the back of the house. I really hate those busybody Neighbourhood Watch types. Are they trying to gang up on me or something? I hate it when people are looking out of their windows and watching what I'm up to. Signs and stickers advertising Neighbourhood Watch really put me off. Dogs don't bother me though. I'm ok with dogs, and

anyone who thinks that just because they've got a big dog, they don't even need to lock their doors has got another think coming!



Sometimes I'll just try my luck and walk up to doors and try them. If they aren't locked, bonus! I'll just walk in and help myself. If there's someone there, I'll make up a rubbish excuse, something like "Sorry, I thought this was my mate John's house" and walk away. Usually, though, I have to break in. I do that by prising the window or door with the short crow bar that I carry down my trousers. It's difficult to prise open a door or a window with a load of dead locks on it. Easy though, if they've left the key in the door – just break the glass and turn the key. I'll nick anything but I really want stuff that I can get rid of easily; jewellery and cash, mainly, and I know where to find them. They're in the master bedroom. People put them there because they think they are safe. They think "If we get broken into, they won't be able to steal our jewellery because they'll wake us up if they try to get into our bedroom". Well - I'm not going to break in while you're at home, am I?

And sometimes, if I can't get into the house I'll have a look in the shed, it's amazing what people will leave in there. I stole a bike the other day and got £300 for it. I reckon it was really worth two grand but some people want big discounts if the stuff's stolen. But all the shed had on it was a cheap padlock. I can't believe it sometimes! People will spend two grand on a bike, then stick it in a shed with a £5 padlock! Easy meat for the pair of bolt croppers I've got in my coat. My life is getting harder though. The police keep on telling people to make sure they have good locks on their doors. Whatever next!? Anyone would think that they didn't want to get their houses burgled!

******* This article is not the words of one burglar but of many. It is a compilation, drawn from genuine conversations with convicted burglars. Between us we can beat the burglars. For more information, please visit the Cambridgeshire Constabulary website www.cambs.police.uk**

Andy Street

See also page 7 for Neighbourhood Watch news.



Christian Aid Big Breakfast

Sunday 15th May 2022

Christchurch Community Centre

Full English Breakfast or Vegetarian alternative
Serving from 8.30am until 11.00am

There will be a quiet time of prayer and reflection afterwards.
All welcome for breakfast or quiet reflection or both.

All monies raised will be donated to Christian Aid.



“Breakfast like a King, Lunch like a Prince, Dine like a Pauper” Streamline your breakfast!



Quick and easy Microwave “Breakfast like a King” ideas – prepare whilst drinking tea, coffee or fruit juice, or having your usual cereal or yoghurt. Put bread in the toaster midway through the cooking, and there’s your daily healthy, tasty and substantial breakfast sorted in less than 8 minutes.

Beware - VERY HOT, so let it stand for a minute.

1. Poached eggs and tomatoes on toast for one.

Chop two tomatoes, cover, and microwave on about 2 minutes or less. If you like, put some spinach leaves in with the tomatoes. Crack two eggs on top of the hot tomatoes in the same container. SPEAR THE YOLKS or they will explode Cover and microwave for about 1.1/2 minutes. Meanwhile, put your bread in the toaster. Butter the toast, place the eggs and tomatoes on it and season with salt and black pepper. **DONE!**

2. Cheesy Omelette.

Crack a couple of eggs into a microwaveable bowl, whisk with a fork together with a little milk, soft butter, salt and pepper, and add a sprinkle of grated cheese. Add a few leftover cooked vegetables if you have some, and mix it all up. Microwave it all for a couple of minutes. **SORTED!**

3. French Toast in a mug.

Mix together - in a microwaveable mug - an egg, a little milk; add cinnamon sugar, or vanilla flavouring, or berries, or even chocolate chips! Break up some stale bread into pieces and put into the mug mixture until it has all been coated. Microwave for 2 minutes or so. **LOVELY!**



Point of view - Freedom

The Four Freedoms were goals articulated by U.S. President Franklin D. Roosevelt on Monday, January 6, 1941. In an address known as the Four Freedoms speech (technically the 1941 State of the Union address), he proposed four fundamental freedoms that people "everywhere in the world" ought to enjoy:

Freedom of speech
Freedom of worship
Freedom from want
Freedom from fear

Roosevelt delivered his speech 11 months before the surprise Japanese attack on U.S. forces in Pearl Harbour, Hawaii and the Philippines that caused the United States to declare war on Japan, December 8, 1941.



CELEBRATING 40 YEARS OF CREATING SAFER, CONNECTED AND ACTIVE COMMUNITIES

CHRISTCHURCH DOES NOT HAVE AN OFFICIAL GROUP AT THE MOMENT. The editor put this question on the NW web page:

Question:

Hello. If someone joins as a Member, can they display the Neighbourhood Watch sticker in their window, even if there is no official group in their area?

Answer:

Many thanks for your email. Yes, they could be members and not in any scheme therefore they could display a sticker as they are part of NW.

Regards, **Kathleen Cunningham** | Central Support Team Administrator
NEIGHBOURHOOD WATCH NETWORK

To join Neighbourhood Watch you can register on line at ourwatch.org.uk You will then become a Neighbourhood Watch member.

Anyone interested in setting up an official Neighbourhood Watch Group in our village should get in touch with Christchurch Parish Council.



WE'RE HIRING!

Great rates.... of satisfaction, working on behalf of our Christchurch village community (there's no money in it, though!).

Flexible hours and work space....in your own time, in your own home. Good Teamworking join the Heron Team.

Use your particular skills to keep The Heron going into the future. See job descriptions below. Job shares definitely considered

For all sorts of reasons, our team at The Heron has been shrinking. This is putting a lot of pressure on very few people; so much so, that The Heron could have to stop production at some time in the not-too-distant future. That would indeed be a pity....

Have a chat with a member of our team, or email editor@theheron.info or call Annie Nason 638088. No obligation. Just put your queries and ideas forward.

So - step up, Christchurch! Secure the future of your Village Magazine. Join the Team!

What practical effort does it take to get The Heron through your door?

Read on for Job Descriptions and helps us out if you can. The more of us there are, the smaller the burden will be on each team member.

1. **IS YOUR FORTE WALKING?** Add your name to our delivery rota. Once a month, for 20 minutes or so, could you deliver The Heron? At the moment, we have a number of deliverers. However, one of our couples delivers to 2 roads AND the whole of Tipps End. Another single deliverer does 2 roads. These good people are doing more than their fair share!
2. **CAN YOU DO A SMALL JOB STUFFING ENVELOPES ONCE A MONTH?** We have a mailing list of about 30 to fulfil monthly. Could you take that on? Stamps, envelopes and address labels provided by The Heron.
2. **COULD YOU COMMIT TO BEING A HERON WORKER AT THE END OF EACH MONTH?** The printed magazines need to be collected from the printer in March Town, and counted out into Heron Delivery Bags (one for each route). Keep an eye on the numbers (?new housing?), and be a place for the collection of the Delivery Bags by deliverers on the last day of each month (a bit of flexibility here). Be our Delivery Manager.



Continued on next page ...

SCARECROWS!

"FIGURES OF FUN!" was the local press headline - there was a Scarecrow Festival in Christchurch in June 2000. It ran for 3 consecutive years and was dated to coincide with the Annual Christchurch Flower Festival, held in the Parish Church.

The first year, 70 Scarecrows appeared all over the village. There was no theme to the festival, so everyone had a free hand in choosing what to make. Scarecrows appeared not just in people's gardens, but also in the school grounds. One was spotted half way up a telegraph pole, and another in a dustbin with only the legs poking out, and a whole group of them we spotted waiting at the bus stop! Prizes were awarded for the best ones. Although it was very well supported in the first year, in the second year it was less so, and by the third year it was time to stop!

The winners were Wolsey Rolfe, and Claire Storey (children's entry). Among the entries were a sailor, a farmer, a butcher, a chef and a lady cutting the lawn whilst her husband looked on, seated in a garden chair and reading the paper.

The event was a fundraiser for CHILDREN IN NEED, and raised £235.

Article written by Sue Norman



Other jobs available that help to get the magazine out

1. CAN YOU USE MICROSOFT EXCEL SPREAD SHEETS? Help out with our accounts and/or take on the responsibility of connecting with our advertisers. (*Great for a Job-share*)



2. ARE YOU PROFICIENT IN USING MICROSOFT PUBLISHER? Help to put the final magazine together.



3. DO YOU LIKE TO GOOGLE OR READ? LOOK FOR ARTICLES / MATERIAL. We need interesting articles – the history of Christchurch, The Fens and beyond are known to be popular reads.

4. COMMIT TO WRITING A SHORT ARTICLE, OR AN OCCASIONAL SERIES OF ARTICLES about a subject of your choice. Sport, music, books, your job, social trends, animals, hobbies, personal history glimpses, recipes.... Anything that you are interested in, you will find lots of other people will also be interested in. Give it a go!

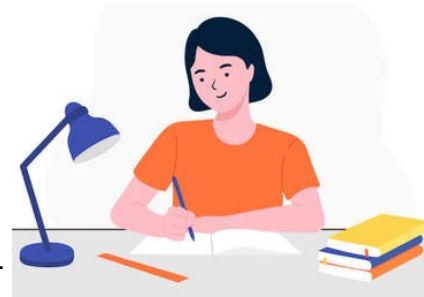
5. HELP TO EDIT THE MAGAZINE. Submit ideas and get feedback from villagers as to what folks would like to read in the magazine. This involves having The Heron in mind during all the month, rather than just at the beginning or end of each month. Join the Editorial Team.

6. DO YOU LIKE TO TALK TO VILLAGERS WHO HAVE A STORY TO TELL? Sign up to the Team and interview people occasionally for the magazine.

7. CAN YOU TYPE UP A SHORT ARTICLE IN WORD? We sometimes receive articles that are hand-written. These just need to be typed up into WORD. A very small and occasional job, but extremely useful in saving time – and stress - for the Editor.

Committee and decision-making posts

- 1. WOULD YOU LIKE TO INFLUENCE THE DIRECTION OF THE HERON?** Join the Executive Committee (3 meetings a year, plus the AGM). This group decides on Financial matters/Fundraising, and Policy/Constitution changes (if any). Sorts out the AGM.
- 2. CAN YOU TAKE NOTES?** The Executive Committee has 3 Officers... plus other members of the Committee. One of the Officers is a Secretary. 3 meetings a year plus the HERON AGM. Minutes and agendas. Not many, over the year, is it!
- 3. WOULD YOU LIKE TO HAVE A SAY IN WHAT GOES INTO THE MAGAZINE EACH MONTH?** Join the Editorial Team to have your say. This team meets once a month over a cuppa, in the first week, to look at what was great - or otherwise - in the preceding month's issue, and to plan the next month's content as far as is possible; also to look further forward in the year.
- 4. HAVE YOU SOME JOURNALISTIC EXPERIENCE, OR WOULD YOU LIKE TO GAIN SOME?** The Editor's job will be up for grabs at some stage...could you take that on? Plan ahead.



*****NEWS ABOUT A HERON FUN-RAISER!*****

SAVE THE DATE FOR THE CHRISTCHURCH SCARECROW FESTIVAL – THE AUGUST BANK HOLIDAY WEEKEND THIS YEAR!

To celebrate the 100th Edition of 'The New Heron', in August, we are going to organise a Village *FUN*-raiser. (NOT a fundraiser!!) Watch out for details nearer the time, but get thinking!



Top 10 for May 7th 2006

- Crazy by Gnarlz Barkley
- Dani California by Red Hot Chilli Peppers
- Somebody's Watching me by Beat Freabz
- From Paris to Berlin by Infernal
- S.O.S by Rhianna
- Steady as she goes by Raconteurs
- Stoned in Love by Chicane ft. Tom Jones
- Bang Bang You're Dead by Dirty Pretty Things
- No Promises by Shane Ward
- You're all I have by Snow Patrol

Events for May 2006

- Steve McClaren to become next manager of England after World Cup.
- Campaigners "Fathers 4 Justice" invade set of National Lottery.
- Later in year England knocked out of World Cup reaching quarter finals before losing to Portugal.

Community Information

Mobile Post Office:

Visits Monday to Thursday in the lay-by on Upwell Road

Monday and Thursday - 16.30 to 17:00

Tuesday and Wednesday - 16.10 to 17:00

Fridays - no service.

ANYONE WISHING THEIR ITEMS TO BE POSTED,
ON THE DAY, WILL NEED TO GET THEIR POST TO THE
VAN BY 4.40PM - WHICH IS WHEN IT IS COLLECTED.

Use it or lose it!

Community Car Scheme:

This scheme is still running for Christchurch and surrounding villages. To book a ride or to become a volunteer driver please ring 07902 316360. An additional driver is still required for the scheme. For more information please ring the number above.

Mobile Library:

**OUR MOBILE LIBRARY COMES ONCE A MONTH,
ON THE FIRST TUESDAY, AT 12 NOON.**

The van parks in the lay-by on Upwell Road, opposite to the entrance of Fen View. **USE IT OR LOSE IT?**

You can use the Select and Collect service online, or by calling 0345 045 5225.

[https://cambridgeshire-self.achieveservice.com/
service/Select_and_Collect](https://cambridgeshire-self.achieveservice.com/service/Select_and_Collect)

***Please support your local Library Service, right in
the heart of your community.***



Money help in Fenland

With rising inflation and increases in energy bills, fuel, food prices, National Insurance and more, people are facing the biggest squeeze in household budgets in more than 50 years.

To help your money go further, Fenland District Council has teamed up with energy partner PECT and Rural Cambs Citizen's Advice to offer practical advice on things you can do to reduce your expenditure and lessen the impact of the cost-of-living crisis.

Check your entitlements: Complete a Benefits check to see if more money help is available with your everyday living and housing costs. This could include: - Universal Credit - Disability and Carers benefits - Pension credit - Help with childcare costs - Working from home allowance.

Help that you can apply for includes Council Tax bills, emergency funds (food etc.), energy bills, managing debt, phone/internet/TV packages, budgeting.

CONTACT:

**Linda Albon,
Member Services & Governance Officer
01354 622229 / 07873 220822
www.fenland.gov.uk**

Church News

Sunday Church services in Christchurch during May:
May 8th: 3.30pm. May 22nd 10.30am.

On Sunday 15th we are holding a **Christian Aid Big Breakfast in the CCC** – see page 6 for details.

On Sunday 29th May there will be a united benefice service at 10:30am at St Mary's Doddington.

Queen's Jubilee: Sunday June 5th we are holding a "Songs of Praise" type service at the Community Centre, starting after 11:30am (time to be confirmed). We welcome any requests for people's favourite Christian hymns and songs. Please get them to the Annie Nason (013540-638088) and we will include as many as we can.

Please check the church noticeboard or the updates on the Christchurch community Facebook page for any further news.

Helen and Andrew

AND FAREWELL to Andy and Sheila Day, one of our Churchwardens and his wife, who are moving away this summer. Throughout many years, both Andy and Sheila have committed to our church and contributed in many ways to the services and events. And behind the scenes, Andy has been getting on with Churchwardenly things, such as looking out for any repeat of flooding on the NE side of the building and bringing notice of other

fabric jobs which need doing, leading services and liaising with the Vicars. Sheila has been on our list of people who read from the Bible each Sunday, and she and Andy had extra duties during the Pandemic which included all the hygiene safeguard measures involved. They have been cleaning the Church too.

We will certainly miss you both, and wish God's blessing upon you as you move away. This is our verse for you.

Jeremiah 29:11 *"For I know the plans I have for you," declares the LORD, "plans to prosper you and not to harm you, plans to give you hope and a future".*



Thoughts from the Rectory

Someone's clowning around!

This is a funny old story in more ways than one. But the newspapers recently reported that in Switzerland, two people had been caught on a speed camera racing through the streets in an open top car, wearing nothing but clown costumes. The article in the newspaper did not reveal why they had done such a thing. It could have been a college prank, or fund-raising stunt, or they could just have been late for their performance at the Big Top. A police official in the town of 'Moerschwil' commenting on the picture said, "I suppose we should count ourselves lucky the wheels and the bonnet didn't fall off!"



Life can often look odd. Thanks to human nature, human beings are complex creatures. Some people are naturally comical, while others are far too serious. Many people find their day-to-day existence a huge strain and worry about everything; others are laid back and contented. It takes all sorts to make a neighbourhood, a community, a world - and it is not always clear why we act the way we do.

If you thumb your way through the Bible, you will find it is full of all kinds of characters; the good, the bad, the barmy, the slightly strange, the saints, the ugly and the beautiful. Ordinary people, whether they are fishermen, thieves, prostitutes, judges, kings, lawyers, farm workers or business people. They all have one thing in common; they find themselves in circumstances in which they realise they can build a relationship with God. Jesus set out to show people that God cared for them. He met many types of characters, and said "Whoever comes to me I will never drive away" (John 6:37. NIV).

Whoever we are, and however we approach life, we are all loved by God. He understands us and he cares for us. We cannot stop him from offering us his love. The only mistake we can make is to steer clear of his LOVE.

Keep well, keep safe.

Ian.



Calling all Country Music Fans....

Thoughts on Country Music

The origins of Country Music in the USA were from Europe, notably the folk music from the British Isles and parts of the Continent, with later influences from Africa, as a result of the Slave Trade. The themes came together and created what is now mainstream Country Music, although it's divided again into straight Country, Bluegrass, Texmex, Cajun, and probably Gospel, as the Christian religion had quite a strong influence in the early days.

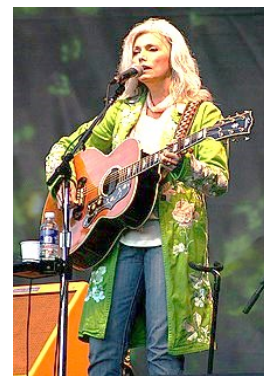
The first recordings were by people like Jimmy Rogers, and the Carter family, quite simple, easy-to-sing-along-to melodies, and in the case of the Carter family, with strong harmonies. The second World War bought it over here with the American forces. Post-war artists have names we're more familiar with. Hank Williams – pictured 1951 (he's worth an article on his own), Kitty Wells, Flatt and Scruggs, Marty Robins, Jim Reeves, Connie Francis, Tammy Wynette, George Jones, and later, Porter Wagoner and Dolly Parton, who later went on to be an international superstar. These are just a few names! We can go on with Johnny Cash, Emmylou Harris - pictured 2005,

Jerry Lee Lewis (who later moved over to Rock & Roll). Even Elvis started in Country, with his classic version of 'American Trilogy'. Further, the skiffle craze of the mid to late 50's gave us Lonnie Donnegan, Chas McDevitt and Nancy Whiskey, amongst others. Most of their numbers were from the Country Music scene. This era also introduced the Pop line-up of groups such as the Rolling Stones, The Beatles and The Shadows - 3 guitars and a drummer (minus, of course, the soulful steel pedal guitar).

In fact, a lot of the music from the late 50's early 60's found inspiration from the Country sound. Some singers, like Roy Orbison, The Everly Brothers, Jim Reeves and Patsy Cline became what is known as "cross overs", appealing to both mainstream Pop and Country. As an interesting aside, a very modest Essex boy by the name of Albert Lee is a world-renowned guitarist who has played/backed some very famous names, including Dolly Parton, Emmylou Harris and the Everly Brothers. and is still very much in demand. The Mecca of Country music is the Grand Ole Opry, broadcast from the Ryman auditorium in Nashville.

Later in the year I'm thinking of having a Country Music evening at the Community Centre, and plan to show some videos and play some music. If there is enough interest from the village, we'll look at hiring a live band as a follow up.

Peter Owen



Christchurch Over 65s Parish Lunch Committee Afternoon Tea

**Saturday 2 July 2022 - 3.00 for 3.30pm
Christchurch Community Centre**

If you (or your partner) live in the Christchurch Parish and are 65 or over, we would love you to join us for Afternoon Tea on the 2nd July.

Please call Ruth Ingram on 01354 638419
for more information and to book your place.

We hope you can join us.

Parish Lunch Committee



TOWNLEY SCHOOL AND PRE-SCHOOL

Christchurch, Wisbech, Cambs. PE14 9NA
office@townley.cambs.sch.uk
Website: www.townley.cambs.sch.uk
01354 638229



Facebook—Townley School
and Pre-School

Remember that our website has
lots more information about
school.

April 2022

I sometimes asked why we don't open the school swimming pool to the community, I would love to do this but it is a health and safety nightmare! To start with, the pool is only 74cm deep (this is approximately the length of my legs!) so many families have deeper easy-up pools at home! Secondly, to open the pool to the public we need to install a toilet near the pool as well as a telephone. Also, the pool hirer needs to have two lifeguards present who have completed infant resuscitation and one of these must also have a valid first aid certificate. We are aware locally of private hire pools that don't have this, but this is a requirement of our local authority. Finally, the type of pool we have means that the water quality is really only good for about four weeks, so the pool would need to be emptied and refilled, as well as paying a member of staff to complete the additional daily water checks - and that's without the cost of heating the pool. If anyone in the community would like to support me in investigating how we can run the pool for longer periods I would love to hear from you. Our fabulous FOTS looked into this about four years ago, but we could not balance the running costs and administration.



In Emperor Class (Years 5 and 6)

In Guided Reading we have studied a classic poem called The Listeners by Walter De la Mare. We have also reached the dramatic conclusion of Rooftoppers and we found out that we should '*never ignore a possible*'. The 20Twenty Production team have been teaching us how make our own stop frame animations to encourage others to help stop climate change by using renewable energy sources.

In Emerald Class (Years 3 and 4)

In **History**, our second lesson was asking the question: What was it like to live in Rome? We talked about a few famous Roman Emperors such as Julius Caesar, Augustus, Nero or Hadrian. We watched a short video showing us what Rome's forum (= town centre) would have looked like with the temples dedicated to various Gods, the basilica (courthouses, offices and shops), the plaza (open space or market place in the centre of the forum), the Colosseum where Romans would have gone for entertainment to watch gladiators or chariot racing and finally, the architecture.



Bags2School are coming on the 6th May at 9am. If you have any old clothes/ bedding/ soft toys your donations will help us raise funds for school.

In EYFS Class (Years N and R)

In Early Years we have been thinking about Easter and eggs! Our tuff spot is always popular and we try to make exciting invitations to play often involving the senses. For example, Children will tip and pour coloured rice; make marks using their fingers or implements in flour/ shaving foam/paint or explore different materials and textures such as ice, dough, slime. Lots of talking and discussing takes place with adults introducing new vocabulary and children sharing their thoughts and observations.

Hawker Class (Year 1 and 2)

We have had a great start to the summer term. Children have been introduced to our beautiful new focus book: There's a Rang-Tan in my bedroom. This has been a very popular choice and they have really enjoyed it. In English writing, we have been looking at writing informal letters using the texts: Dear Greenpeace, Dear Dinosaur, Dear Teacher and The Jolly Postman. In maths, we are exploring position and direction - looking at describing turns and positions using the correct mathematical vocabulary.

A broken dog, for a broken man.

Many will have encountered me walking Wellington through the village, or up at the Dun Cow where he'll sniff and say 'hello' while checking you for treats. Some of you may remember him when he first arrived and since noted the vast difference in his confidence and demeanour over the past year or so. The article's title is intended as a little tongue in cheek, in a similar manner to how I call him 'Little Dog', even though he clearly isn't. That being said, he is smaller than me, so it's not untrue.

I've always wanted a dog, but I've lived on my own for most of my working life, and also rarely been home long enough each day for it to be fair to the dog. I'd also battled depression and some serious suicide attempts over the past 30 years which culminated over two years ago in finally reaching out for the professional help I really needed to try and fix things.

As part of that process, I identified that I needed something more to life, a reason greater than work to motivate me. Sometimes there's a synchronicity to life that binds the right events together. This first came from work when they indicated that I could work from home on a more permanent basis. They've been incredibly supportive throughout the years and I can never thank them enough for that. I'm very happy in my job, and they made changes to reduce stress where it made sense to do so. I made other smaller changes, and with these in place, a slightly less broken man continued repairing himself by looking for a dog.

Initially I searched for puppies and soon realised that not only had lockdown driven prices up to ridiculous levels (the lockdown also caused an ongoing crisis in dog welfare, but that's for another article), but also, I didn't really know what I was looking for. Once again, a friend in the village came to my aid, and Ray put me in touch with Debbie.

Debbie lives in Marshland St James and is the chairman for the German Shepherd Dog Welfare Fund - a name that many of you who know me are now familiar with. We talked and she assessed a likely candidate from the dogs in their care who'd be a good match for me. And so, within a few days, I drove up Stamford near Peterborough to meet Wellington. In that first meeting I immediately grasped two things - the first that Debbie knew how to match a person and a dog together, and the second that I would do whatever was needed to bring this dog into my life.

On our first meeting Wellington was nervous, and understandably so, considering the life he'd suffered. He's food motivated, and that helped immensely. Before adopting a rescue, you have to visit the dog a few times to try and make sure you're compatible and the kennel owner Lawrence provided useful tips for taking care of him. You aren't told much about the dogs' lives before their rescue, but they do provide enough information to understand the life they've led and the issues we'll face trying to give him a better life. Without expanding on the details (I did learn more about his past over time) of the abuse he suffered, I know that he'd lived in hell for most of his life. Without papers we weren't sure how old he actually was, the best estimation was 8-9 years old, and almost all spent in the compound he and a number of other GSDs have been rescued from.

Over the next month I drove up every weekend to the kennels and walked him in the cold and we got to know each other. I prepared the house and garden, in particular ensuring a secure garden, ready to provide Wellington with a new home. My house and garden were duly inspected, and a few changes were needed as they're smart and dextrous dogs and can escape in ways you wouldn't expect from such a large breed.

As well as checking the home environment I also needed to demonstrate that I could identify what the dog would need, but also assessing my ability to work with the dog to provide training and support. Positive reinforcement training was emphasised, the days of dominating or fear-based training belonged in the past along with many dog-related myths (again a juicy subject for another article).

Finally, the day arrived - a warm Saturday morning and Tony delivered Wellington. He remained extremely nervous for a few days. He had the roam of the house and made full use of it as he hid from me and I had to search and find him for food, or to go into the garden. At that early stage he was kept on a lead even just going for a toilet in the back garden.

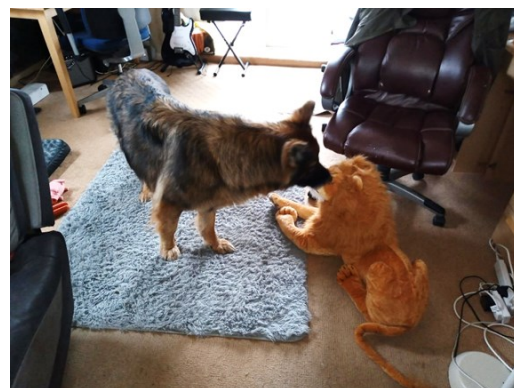
Wellington (or more commonly now called 'Wellie' or 'Little Dog') remained nervous over the coming weeks, and there were accidents to clean up. Sometimes I can be slow witted, and by the time the easy clean rugs arrived I taught Wellie how to let me know he wanted to go out and the accidents quickly ended!

My broken dog had his issues and still has. He doesn't care for other dogs at all, and as he gained his confidence, he soon became vocal about it. If I spot the other dog first then I can generally talk him through it with little drama, but if we're caught by surprise then things become a little difficult. This is another reason people should keep dogs on a lead, your dog might be reasonably behaved, but running up to a traumatised dog to say 'Hi' isn't a wise move.

I still have to walk through strange doors first - I'm his bodyguard, not the other way round. He has problems with his back end, which the breed can be prone to, but in Wellie's case it was more directly caused by humans and their tool using capacity. Watching him dream can be heart breaking, so much so that if he was human, I'd have said he suffered from PTSD.

My life experience, for the most part, was nowhere near as traumatic as what Wellington's been through. Yet another's worse experience doesn't invalidate your own, but between us both we're more comfortable with life. It's a long journey, and far from over, and one we'll walk together.

Michael Brookes



Wellie sadly doesn't understand toys, so I kept trying different things to see if it would spark anything - this large lion did not.

Kids Corner - Water Fun and Games!



Unscramble these water activities. Beware – not all of them are pictured here!

1. NIMIMWGS 2. ORSINNGLK 3. OPLO LEIDSS 4. GINDVI 5. FURSGIN 6. TAWRE LOOP 7. ASSIDEE 8. ASINGLI



Answers on
Page 24



WHY DOES THE EARTH APPEAR BLUE FROM SPACE?

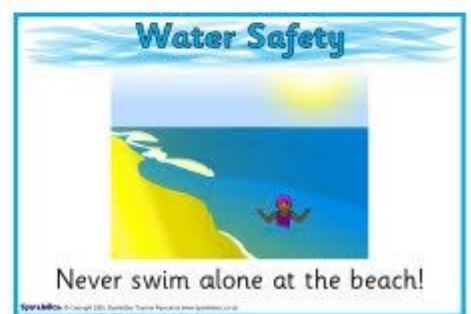
Mars is the red planet; the Moon is an ashy grey; Saturn shines yellow and the Sun is a brilliant, blinding light. But our planet, when seen from the depths of space, whether we rise up above our world only slightly, in low-Earth orbit, or whether we travel to the outer reaches of our Solar System, shines a glorious blue. But why? *Why* does the Earth appear blue?

The *entire* planet isn't blue, of course. The clouds themselves are white, reflecting the white, direct sunlight back out at any onlookers. Ice—such as the caps on our planet's poles—appears white for the same reasons. The continents, similarly, appear either brown or green from a great distance, depending on the seasons and how covered-in-plants the terrain is.

Earth's seas and oceans are the truly blue part of the planet. The *shade* of blue that the Earth's water appears varies, based on how deep the water is. Watery regions bordering the continents (along the continental shelves) is a lighter, more cyan shade of blue than the deep, dark depths of the ocean.

AMAZING EARTH - WATER FACTS

About 71 percent of the Earth's surface is water-covered, and the oceans hold about 96.5 percent of all Earth's water. **WOW!**



Speechless!

...and that doesn't happen very often!

After church it was the PCC annual meeting (Parochial Church Council). I am not on the PCC, so I turned to leave for home. I had been "tipped off" about some sort of presentation for Andy as he was leaving his role as Church Warden. However Mrs Chappell (bless her!) made it clear that I needed to stay. I was a bit disgruntled as I had some chores lined up at home to do!



Imagine our surprise when at the end of the meeting we were both showered with lovely gifts and cards....and then others started to arrive bringing all that was needed for a delicious buffet lunch., crowned by a wonderful cake made by the very clever Karen Beers featuring a bicycle, bottles of beer, sausage rolls and books including a Bible. All reflecting our interests from our time in the village; with lovely flower arrangements from Caroline McGonagle.



Thank you so much to our lovely church and our lovely village for this very special occasion. Andy and I will miss you so very much and will definitely be visiting a good deal! Our actual moving date is not yet decided, but will probably (maybe) be sometime in May or early June.

Thank you all again!

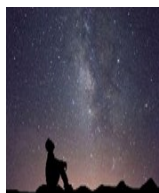
Sheila & Andy Day



Spring Picture by Anne Williams, Church Road



Christchurch Stargazers



APPARENT MAGNITUDE		
Mag. 1		
Mag. 2 x 2.5 dimmer		x 2.5
Mag. 3 x 2.5 dimmer		x 6.25
Mag. 4 x 2.5 dimmer		x 16
Mag. 5 x 2.5 dimmer		x 40
Mag. 6 x 2.5 dimmer		x 100

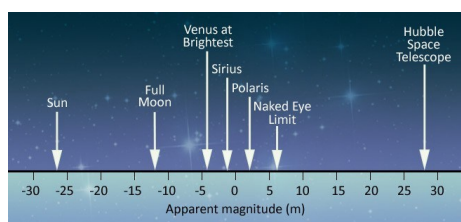
Hello Christchurch Stargazers.

This month I am going to talk about Star Brightness. In astronomy, magnitude is a

unitless measure of the brightness of an object in a defined passband, often in the visible or infrared spectrum, but sometimes across all wavelengths. An imprecise but systematic determination of the magnitude of objects was introduced in ancient times by Hipparchus (c 190-120 BC). The scale is logarithmic and defined such that a magnitude 1 star is exactly 100 times brighter than a magnitude 6 star.

Remember - never ever look at the sun without the correct protective equipment.

Mark Andrews



Christchurch Art Group



We meet on the 2nd and 4th Tuesday of the month 1.30 -3.30 in the Village Hall (term time).

- Our focus is to explore and experiment with the various painting and drawing media
- To enable participants to develop their own style
- Above all to have fun and enjoy the sessions
- The sessions are planned and adjusted to suit, depending on the experience and interests of the group
- The group leader is experienced in a wide range of media, and has some art materials for you to try out if they are new to you. *We have suitable paper for a reasonable cost to purchase and materials can be borrowed until you have your own*. Our group is friendly and relaxed and we love to welcome new folk.



If you would like a programme, please contact Jan and one will be sent with any further information.

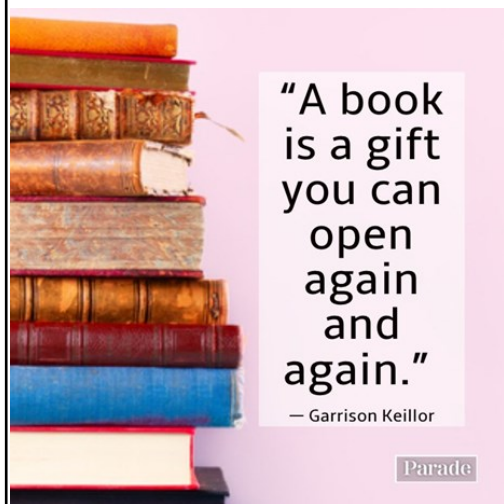
Please contact Sandra 01354 638478 or Jan 01354 638217. (clifford.jjr5846@gmail.com)

**(Please note we may still have to follow 'Covid' rules, so may not be able to offer equipment to borrow. Items can be ordered for use if requested.)*

Christchurch Book Club



Because of the dates for getting the magazine to print this time, the April Book Club report will be incorporated with the following one. Ed



Christchurch Jigsaw Club



During lockdown I started doing jigsaws, and I've found it a great way to relax away from work and screens. Swapping with friends, I've built up a collection of more than 50 puzzles, most of them 1000-piece good-quality designs from companies like Gibsons, House of Puzzles and Ravensburger.

I'd like to lend these out to other people in the village, so if you'd like to borrow a jigsaw please get in touch. I'll email or send you a list to pick from. I can deliver within the village, you can keep it for up to a month, and when you're done, swap it for a new one. All completely free of charge.

You can contact me on 07776 170118, or (preferably) email jigsaws@robertambrose.com



Our speaker for the evening in April was Kate Theobald, from the South Essex Wildlife Hospital, where she has worked for the last 19 years. The Hospital is a registered vet site, with no animals refused. Injured wildlife animals, some 10,000 each year, are taken in and nursed back to health and then released into the wild. There are vets on the 4-acre site. The Hospital is supported by donations and fundraising events. Grants are available for larger items of equipment such as X-ray machines. Their current fundraising is for nursing and rehabilitation facilities for injured seals. With medicines alone costing £2,000 per month, funds are always needed.

Margaret Sparrow congratulated members who had taken part in the co-operative entry at The Federation Show, after coming 5th of 12 entries.

To celebrate the Platinum Jubilee, members were asked to make red, white and blue fabric flowers to bring to the next meeting, and the plan is to decorate the Village Sign.

Competition results: 1st, Sharon; 2nd, Margaret Sparrow; 3rd, Sue Norman. Next month, the colour is green. Next Meeting: Tuesday May 10th at 7pm in the CCC.



“PUTTING ON A SHOW”

Tuesday the 19th of April saw the club once again at the community centre, for our regular monthly meeting.

We were happy to welcome several new members, as well as our long-time supporters, all come to hear the much-anticipated talk by Mr David Reeve. David was for many years a high-ranking Detective in Norwich and subsequently in charge of security for the Royal Family. On this occasion David had come to talk to us about organising the Sandringham Flower show, which he did for an hour and a half, regaling the members with inside information, tit bits, jokes and stories from his thirty years as chairman of the committee.

The Flower show, now in its 139th year, was inaugurated by the then Prince of Wales in 1881.

Christchurch Gardening Club

Originally intended as a small gathering for the estates Tenants, the show grew in popularity to its current massive size, welcoming over twenty thousand people in a single day. David has been chairman of the committee of volunteers and oversees the herculean task of staging the event. The show this year is on Wednesday 27th July and for the first time its possible to book tickets online and in advance at www.sandringhamflowershow.org.uk

Next Month on 17th May the club will play host to Mark Mooney, talking about Bonsai trees. So come along on the night and join us or call 01354638230 for more information.

Steve

LUNCH BREAK

Lunch Break this month – 11th and 25th May from 12 noon – 2pm, in the Community Centre.



IT'S FREE!

BYO Lunch. Catch up with old friends, make new ones. Chat over lunch with Tea or Coffee and relax. Or just come for a cuppa.

Always the 2nd and 4th Wednesdays of the month. Our Covid plan is to be cautious.

Contact: Annie on 01354-638088



Indoor Short Mat Bowls

New club meeting every Monday 7-9pm at Christchurch Community Centre.

ALL WELCOME! (Spare bowls available to loan.)

For further details call Janet Harper on 07941 465319.



PC Snippets

This time, there are several extra-important matters for everyone to consider. Read on!

1. Annual Meeting, where the Chair and Vice-Chair stand down (yearly) and the posts are filled for the next 12 months. May 9th, 7.30pm CCC
2. At the start of the meeting on April 11th, a speaker from FDC, David Vincent, gave a short presentation on how to go about having an emergency plan, in case of prolonged power cuts, floods or any other local emergency. The PC needs to fill in a "Local Resilience Form" which should show that they: 1. Are aware of any local risks 2. Have a directory of contacts which should include people who have local knowledge, or have facilities to help, and of those parishioners who might be particularly vulnerable were a local emergency to occur. Talk followed of what might be done in the case of a prolonged electricity outage, and the conversation ranged round generators. The FDC web site has further information, should any reader wish to follow this up.
3. The PC were gratified that their Annual Parish Meeting had such a good representation from villagers. Following on from that, they expressed regret that no one has come forward to set up some kind of Youth Group, as the need for one in the village is clearly there, and a parishioner brought this up at that meeting. The PC is very open to the idea, and is able to offer set-up grants. There is also money to be found elsewhere for support of such a venture. However, that is all the PC can offer, as the village needs a team of people to take the lead on this matter.

4. FDC Cllr Sutton brought up the subject of the proposed Boundary Changes for FDC Wards. The PC is against this. Did you know that these proposals directly affect Christchurch? Our present Ward suits us just fine thank you, was the mood of the meeting. The new proposal puts Christchurch with Benwick, Wimblington and Doddington. All the other side of the 16ft. Consider this.... Most villagers here use the Upwell Surgery. Most medical emergencies and surgeries use King's Lynn Hospital, or Addenbrookes, and most Christchurch Teenagers attend Neale Wade in March. More importantly, we will likely lose our ability to vote for our Independent Councillors because of this rearranged idea. We have no natural connections with the newly proposed group of villages either. Apparently Benwick, Doddington and Wimblington are against this too. **The PC asks that all villagers who agree with them to please make their views known. Last date to do this – June 6th 2022.**

WRITE: Review Officer (Fenland), LGBCE, PO Box 133, Blyth, NE24 9FE

EMAIL: reviews@lgbce.org.uk

WEBSITE: <https://www.fenland.gov.uk/article/16393/Local-Government-Boundary-Commission>

"The Local Government Boundary Commission wants your views on new political map for Fenland Fenland residents and organisations are being asked to share their views on proposals by the Local Government Boundary Commission to change ward boundaries in Fenland. A 10-week consultation on the proposed wards for Fenland District Council will run until 6 June 2022. The Commission is the independent body that draws these boundaries. It is reviewing Fenland to make sure councillors will represent about the same number of electors, and that ward arrangements will help the council work effectively".

- 5.. and a few more...Questions about the Caravan in Brimstone Close ... not legal and will have to go. Welney Flood Defences: summer traffic disruption. Trees down Green Lane: need dealing with. Vehicle access space opposite the school: discussed. New field space – steering group discussed.

Annie Nason



The Best Bluebell Walks in Suffolk and Cambs

- Gamsey Wood, nr Ramsey.
- Brampton Wood, Huntingdon.
- Hayley Wood, Little Gransden.
- Reydon Woods, Southwold.
- Bradfield Woods, Bury St Edmunds.
- Arger Fen and Spouse's Wood, Sudbury.

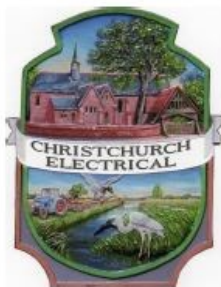
CHRISTCHURCH ELECTRICAL

Simon Freeland Hill Farm, 3 Church
Road, Christchurch, PE14 9PQ

Tel: 01354 638802 Mobile: 07727 046439



Domestic electrical work undertaken.
No job too small.
Free quotations / estimates.



www.electricalcompetentperson.co.uk

www.electricalsafetyregister.com



**ALL PESTS
CONTROLLED**

Domestic & Commercial Pest Control

www.allpestscontrolled.co.uk

WOODWORM

BEDBUGS

MOLES

MICE

RATS

ANTS

SQUIRRELS

RABBITS

WASPS

BIRDS

FLEAS

BEES



Call Danny on

Tel: 01945 772 153

Mob: 07795 073 985



A JONES & SON

TELEVISION SALES/REPAIRS/INSTALLATION

FREE LOCAL DELIVERY

FIRST CLASS AERIAL INSTALLATIONS/ADDITIONAL POINTS

26 March Road, Wimblington, March, Cambs PE15 0RN

Tel: 01354 740320

CLOSED ALL DAY TUESDAYS

FOUR SEASONS TREE SERVICES

Qualified & Professional Tree
and Client Care

PRUNING ● LOPPING ● FELLING

PLANTING ● REDUCING & RESHAPING

CROWN RAISING ● HEDGE TRIMMING

THINNING ● POLLARDING ● STUMP REMOVALS

OVERGROWN GARDENS PUT BACK INTO SHAPE

FRUIT TREES TREATED ● LOG & WOODCHIP SALES

FREE ESTIMATES & ADVICE WITH NO OBLIGATION

For quality jobs at a competitive price call:

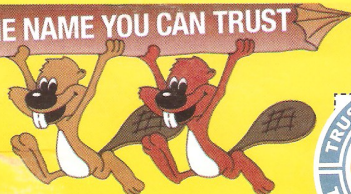
Home: 01353 721665 - Mob: 07771 707921

All work carried out to BS 3998 Standard

A genuine family managed business est. for over 30 years - Fully Insured



THE NAME YOU CAN TRUST



This company offers a 7 day cooling off period



645 Services Ltd

For your complete Oil Services

Registered Office: 12/13 The Crescent, Wisbech,

Cambs PE13 1EH – Director: B E Easey

Company Registration Number: 07872493

VAT Number: 126 5422 30

For a competitive oil quote, for delivery
in the village and surrounding area,
(Outwell, Upwell, Tipps End, Welney)
please call 645 Services' local
Representative, Elaine, on 01354
638310 or 07803 178824
(office hours only please)
or Email: elaine@645services.co.uk

We will always try and be the best price
around - with local deliveries scheduled
for most weeks throughout the month.



BE LIKE A CROW

-COLLECT SHINY THINGS
-HOP HAPPILY DOWN THE STREET
FOR NO APPARENT REASON
-SCREAM LOUDLY WHEN YOU SEE
YOUR FRIENDS

Fenland

Have your say on council changes

The Local Government
Boundary Commission
for England

Our independent
review proposes:

- 42 councillors
- Changes to most ward boundaries



Consultation closes: **6 June 2022**



<https://consultation.lgbce.org.uk/node/30415>



A PLEA FROM OUR LOCAL FARMERS TO ALL DOG OWNERS AT THIS TIME OF YEAR

Please be sure to keep your dogs on the lead when walking them down farm tracks. Even the slightest fun-run-around on recently sown or planted crop fields seriously damages both the crops and the soil.

DO NOT ALLOW YOUR DOG TO WORRY SHEEP OR OTHER LIVESTOCK.

Apart from the fact that it causes much distress to the animals, and can cause miscarriages or death, it is against the law for you to allow your dog to be loose in fields with livestock. If your dog worries livestock you may end up being sued for compensation and, in some circumstances, as a last resort, a farmer is legally allowed to shoot a dog who is threatening their animals.

Dogs (Protection of Livestock) Act 1953 - Legislation.gov.uk



The Dun Cow

Green Lane, Christchurch, PE14 9PG
01354 638323

OPENING HOURS:

Mon-Thur 4.00 pm – 10.00 pm
Fri 3.00 pm – 11.00 pm
Sat Midday – 11.00 pm, Sun Midday – 9.00 pm

MONDAY FOOD

9.30 am till 11.00 am - Cooked breakfasts.

FRIDAY FOOD

4.30 pm till 8.00 pm - Phone to book your timed slot.

SATURDAY FOOD

4.30 pm till 9.00 pm -
A range of freshly cooked pizzas to eat in or takeaway.

FORTHCOMING EVENTS

Saturday 14th May - Plant Sale
Tea's & Coffee available

Sunday 22nd May - Charity Tractor Trail
Lunch time stop @ Dun Cow in aid of Air Ambulance.

Our Easter Raffle raised £194 for the Air Ambulance.
Thanks to all.

Interested in First World War History? This is for you...



In May 1922, King George V took a very small party to visit the opening of military cemeteries in Belgium and France which culminated in Etaples. Sir Frank Fox was invited to join them and wrote an evocative account - "The

King's Pilgrimage"- accompanied by unposed photographs and an introductory verse by Rudyard Kipling. This Limited Edition hardback book has been made available to commemorate the 100-year Anniversary of the Pilgrimage and Fox's great-grandson Dr. Charles Goodson-Wickes, a veteran of the First Gulf War himself, contributes a new introduction to the book.

<https://www.amazon.co.uk/Kings-Pilgrimage.../dp/0992890160/>

STOVELINER

**INSTALLATION OF MULTI FUEL
WOOD BURNING STOVES.
SERVICE & MAINTENANCE.
FULLY INSURED.
HETAS CERTIFIED.**



**COVERING CAMBRIDGESHIRE, NORFOLK,
SUFFOLK, BEDFORDSHIRE, HERTFORDSHIRE,
ESSEX AND LONDON.**

STOVELINER@OUTLOOK.COM

07940 001 830

FIND US ON SOCIAL @STOVELINER

Beauty Treatments By Jane

N.V.Q. – i.b.d. – Babtac

**LCN Microdermabrasion Facials
NEW Oxygen regeneration Facials - less
outlay than Botox (a celebrity favourite)
NEW - Non-surgical firming lift and tone
St.Tropez Spray tanning
Gel pedicures
Shellac manicures
Week-end & semi permanent
eyelashes**

**Rose Cottage,
Christchurch
Telephone: 01354 638378**

Outwell Timber

For all your Timber and Building Supplies

**ISLE ROAD, OUTWELL
PE14 8TD**

Tel: 01945 77 21 16

**FENCING, PANELS, TRELLIS
TIMBER, PLYWOOD, DECKING**

SAND, BALLAST, GRAVEL

SCREWS, NAILS, BOLTS

PAINT, SILICONE, HAND TOOLS

**LOCKS, ELECTRICALS, PLUMBING,
GUTTERING
UNDERGROUND PIPE & FITTINGS**

CEMENT, MULTIFINISH, PLASTERBOARD

Welle Cinema Presents

 creative ARTS EAST



DEATH ON THE NILE

Sunday 8th May, 2pm

Three Holes Village Hall

Tickets £3.50 (no need to book) | Doors open 1.30pm

Enquiries: Anne, 01354 638405 | Bar and refreshments

www.threeholesvillagehall100.org.uk

Generously supported by Local Authorities and our principle funders:



Supported using public funding by
**ARTS COUNCIL
ENGLAND**



Find out more by visiting
www.creativeartseast.co.uk



Please
recycle me

Russell's Family Butchers

Family butchers for 5 generations. All of our meat and poultry is fresh free range from our own farm.

Visit us at our shop in Upwell or at our market stall in March (Saturdays) or Wisbech (Thursdays and Saturdays).

**97 School Road, Upwell, PE15 9EW
Tel: 01945 773419**

SUPPORT WORKERS YOU CAN TRUST




Pure Heart
Homecare Limited

"PEOPLE WERE VERY
POSITIVE ABOUT THE
KINDNESS AND
RELIABILITY OF THE
STAFF" - CQC

- PERSONAL CARE • POST HOSPITAL CARE • DEMENTIA PATIENT CARE • PHYSICAL DISABILITY SUPPORT
- SHORT AND LONG TERM CARE • COMPANIONSHIP
- REHABILITATION

CONTACT US TODAY TO SEE HOW WE CAN HELP
T: 01945 773861 A: 130 WISBECH ROAD, OUTWELL, PE14 8PF
E: ADMIN@PUREHEARTHOMECARE.CO.UK W: WWW.PUREHEARTHOMECARE.CO.UK

Care at home... because home is where the heart is 

Upwell Computer Repairs

Sales – Repairs - Maintenance - Upgrades

**Sales & Support
Internet Setup
Virus Removal
Tuition
Web Design
Email Setup
System Installations
Data Recovery Services**



**Laptop Screen Replacement
Windows Reinstallation
Hardware Upgrades
Software Upgrades
On-Site Services
Custom Built PC's
Internet Security
Network Installations**

Contact Lewis today for a free consultation

01945 772717 - 07849 778525

support@upwellcomputerrepairs.co.uk - www.upwellcomputerrepairs.co.uk



Your Complete Outdoor Play Solution

**Design · Manufacture
Install · Maintain · Parts**



+44 (0) 1354 638 359

sales@onlineplaygrounds.co.uk

onlineplaygrounds.co.uk



Kid's Corner Answers

1. SWIMMING
2. SNORKLING
3. POOL SLIDES
4. DIVING
5. SURFING
6. WATER POLO
7. SEASIDE
8. SAILING



Qualified Seamstress

All dressmaking and sewing jobs undertaken. Alterations to clothing and curtains.

**Please contact: Sandra Kay
on 01354 638478**



caters for all occasions
music from the 70s to 2000s

M & K Roadshow

**Martin
Mobile Dj**

Keith 01354 638615

07479943870

turbo.bruce586@gmail.com

GRANARY STUDIO

Your local picture framer

01354 638614

www.granarystudio.uk

The Granary
Hall Farm, Upwell Road
Christchurch
PE14 9LJ



Booklet Printing
Business Cards
Digital Photos
Leaflets
Newsletters
Banners

01354 656614

sales@marchsp.co.uk
5 Fenland Walk, March, PE15 8TW



LW Vehicle Services Ltd Car and Commercial Repairs

- Class 4 and 7 MOT Testing
- Full Diagnostic Service
- HGV Maintenance
- Batteries - Tyres - Exhausts
- Welding and Fabrication
- Timing Belts
- HGV PMI Inspections
- Aircon Service and Repair
- Courtesy Car Available
- All Service and Repairs Undertaken
- Car and Van Sales

Call **01354 610172**
Email lwvs@outlook.com
Web lwvehicleservices.com



March Road, Welney, PE14 9SE



Wisbech •FUNERAL SERVICE•

Independent Family Funeral Directors



Funeral Directors James
and Laura are proud to be
serving the community

Personal, caring & affordable

Advice without obligation

24 hours a day



FUNERALS FROM £2,495

Inclusive of all fees

Chapel of Rest

Traditional, Modern & Eco-friendly funerals

Pre-paid & pre-arranged funeral plans

17 Old Market, Wisbech, Cambridgeshire, PE13 1NB

01945 405950 (24hr)

www.wisbechfuneralservice.co.uk

P R PARKER

Established 1978

General Building and Maintenance

Carpentry Glazing
Plumbing Painting
Plastering Decorating
Bricklaying Rendering
Roofing Guttering
Refurbishment
& Renovation

01354 638380

FREE ESTIMATES

All types ~ Houses ~ Flats ~ Shops ~ Offices

Poplar
Arts & Crafts

Workshop places now available to book

Wednesday 25th May 2.00–5.00

Makeup secrets for the over 45s with Caroline Smith

Friday 27th May 9.30–4.00

Dip pen and colourwash drawing with Tim Oliver

Wednesday 1st June 9.30–12.30

An introduction to Alexander Technique with Chris McKay

Saturday 18th June 10.00–4.00

Flute Day with Frances Wyatt

Friday 1st July 2.15–5.00

Alternative Therapies taster workshop with Jennie Mercer

Saturday 23rd July 9.30–1.00

Needle Felting with Jayne Andrew

Also available – one-to-one sessions with Alexander Technique teacher Chris McKay on Wednesday mornings 4th, 11th and 18th May – phone or email frances@poplarartsandcrafts.co.uk for more information. COMING SOON – Crochet, Bobbin Lace, Embroidery

For more information and booking go to

www.poplarartsandcrafts.co.uk

or phone Frances on 01354 638374

A.R. CLINGO

FUNERAL DIRECTOR

Family Independant
Business

Private Chapel of Rest
Personal Attention

24 Hour Service

Full estimates given at all times

Golden Charter
Funeral Plans



Pinfold House
St. Peter's Road
Upwell, Wisbech
Phone 01945 772502

DR AC

- Any vehicle air conditioning
- 25 years experience
- Same equipment as a main dealer
- R134A service from £40 no vat
- R1234YF service from £95 no vat

Any Vehicle:

- Dent repair on any panel from £50 no vat
- No appointment necessary just call in.

Call 01354 638635 or Mobile 07932 601716.
Leave a message and I will call you back.

Laburnum House, March Road, Tipps End, PE14 9SG



Royal
Horticultural
Society

NATURE NOTES: MAY

By this time in the year, migrant birds such as swifts and swallows from Africa have arrived. The dawn chorus can be deafening as birds compete for territories and mates. Choose annuals and

perennials to attract insects, such as cornflower, cosmos and phacelia. Allow some of your plants to go to seed. Be careful to avoid disturbing birds' nests in boxes, shrubs and hedges. Continue to top up bird feeders but stop feeding for six weeks if you spot any sick birds. Pull out any weeds growing in areas sown with wild flower mixes.



Swifts

- Dark brown all over
- Larger than swallows & martins
- Long, curving wings



Swallows

- Glossy, dark blue-black above & creamy-white below, with a dark red forehead & throat
- Long, deeply forked tail



House martins

- Glossy, blue-black above with a bright white rump
- Short, forked tail



Sand martins

- Our smallest member of the swallow family
- Brown above, white below & a brown band across its breast
- Short, forked tail



HOW WEIRD IS WATER - RESPECT !



You might not see it, but it is probably the strangest thing in the Universe. Here's why. Every molecule of water on the earth and inside you or any other living thing has existed for billions of years. After it came to earth, that water has been cycling through rocks, air, animals. Plants and back again. Each molecule has been on an incredible voyage before coming to you. At some point, the water inside you would have been inside dinosaurs, bacteria, the oceans, storm clouds, the polar ice caps and much more. All of water on earth is alien.



They may be a familiar part of our world, but oceans formed hundreds of millions of years after our planet took shape. The water arrived on asteroids and comets from space, objects from the edge of our solar system. They were leftovers of the vast clouds of dust and rocks that

didn't quite make it into planets. This is the origin of all the water you can see on the earth.

Water doesn't follow the normal rules of chemistry. For a start, it shouldn't really be a liquid on our planet. A water molecule is made from two very light atoms, Hydrogen and Oxygen. And at the temperatures and pressures on the surface of the earth, rules of chemistry say that water should be a gas. And, unlike any other chemical, when water freezes, it expands. And so ice floats on water. Now you see this every day, but take a moment to think how weird that is. Over time, this odd behaviour has been very useful. By insulating the water underneath, floating ice has enabled complex

life to survive and evolve on our planet, despite the many ice ages that have frozen the Earth's surface solid.

And the strangeness just goes on and on. Did you know that hot water freezes faster than cold? Yes, really. No-one knows why. Water molecules can float upwards, against the force of gravity. That's because they love to stick together. They're so good at it that they can actually pull each other up through tiny channels, such as the tiny blood vessels in your body. That's how Oxygen and nutrients reach the edges of your brain. The same process, called capillary action, allows plants to move water from deep below the ground to nourish leaves and branches that grow in the sunshine.

Our solar system is drowning in water. Once upon a time, we thought that we were alone on Earth with so much water, but in fact it's the second most common molecule in the universe. We now know there's water on the moon, on Mars, Pluto. In fact, there's H₂O on almost every object in the solar system. And where there's water, there could be life.

So pour yourself a glass of water now, and take a good look at the colourless, featureless and tasteless material.

It's actually remarkable. It breaks so many rules of chemistry that scientists struggle to understand it. But without its rebel behaviour, none of us, nor our world, would exist. You are only reading this because water is so strange.



Article by Science journalist Alok Jha

Source: <https://www.bbc.co.uk/ideas/videos/why-water-is-one-of-the-weirdest-things-in-the-uni/p06y2c9k>

WELNEY WASH FLOOD DEFENCES PLAN FOR THE SUMMER

*** Note from the editor: You will doubtless understand my reluctance to put this article in The Heron, as we don't have such a great record of predicting road closures round here!! Apologies...please don't shoot the messenger. Hopefully, these planned road closures will come to pass as stated in this article published in The Fenland Citizen, March 2022***

WORK ON IMPROVING FLOOD DEFENCES ACROSS THE OUSE WASHES RESERVOIR HAS NOW ENTERED ITS SIXTH YEAR WITH PLANS TO INSTALL A NEW BARRIER ACROSS THE WELNEY WASH ROAD.

In its latest up-date (March 8th) on progress to raise the Middle Level Barrier Bank which extends from Earith to Welmore Lake Sluice, the Environment Agency explains the work being carried out is to comply with recommendations made by an inspecting engineer under the Reservoirs Act 1975. Work to install the bespoke barrier on the Wash Road will mean it needs to be closed for around five weeks later this year.

The new barrier will be demountable and will, the Environment Agency said, provide a more robust flood protection - it is being made especially for Welney. Part of the work will see a short concrete support wall on each side of the road to connect the temporary barrier to.

The Environment Agency will also build a concrete slab across the road to attach the barrier to whilst it's

in use. The agency has submitted an application for a road closure order to Norfolk County Council and are awaiting approval.

It is expected the work will begin on June 13 when two-way traffic lights will be in operation from then until July 19. After that from July 20 to August 25 there will be a full road closure, and then from August 26 to September 16, the two-way traffic lights will be back in operation.



But the Environment Agency says it might have to use temporary traffic lights before the road closure; this will depend on the work activity and room that is available. However, they will be required, after the road closure, to provide enough space to work safely to complete the works. During construction, there will not be access to the Middle Level Barrier Bank at Welney. The Environment Agency will need to use all the space available to tie the foundations into the embankment either side of the road. Access to the Middle Level Barrier Bank from Welmore Lake Sluice at Salters Lode will not be restricted.

A spokesman for the Environment Agency said: "We understand that the Welney barrier works will be inconvenient, and we are grateful to everyone that has engaged with us to help reduce the inconvenience. We would like to thank you for your co-operation and patience, and we will continue to work with the you and the community to continue to minimise disruption."



KEEP UP THAT NEW YEAR'S RESOLUTION?

"I resolve to eat less and move about a bit more in 2022"

Hopefully, everybody will have got into a fitness routine of some kind by now. In view of this, the time has come to let you go it alone.

I hope you have enjoyed this little journey and have gotten a few ideas to keep you active and healthy. Don't give up! Now that the weather is changing for the better it's the perfect time to get outdoors and walk,

jog, cycle or join a club. Remember, if you find something you enjoy doing, you're much more likely to stick with it. Best of luck and keep up the good work.

Kathleen Henderson

Any views expressed in The Heron do not necessarily reflect the views of The Heron Editorial Team. The team aim to provide a balanced view of village opinions where such views are expressed. We reserve the right to edit any submissions where we feel this is appropriate.

