

The Heron

Community Magazine

Delivered to homes in Christchurch, Euximoor and Tipps End

In this issue

Defibrillator Training	2
Anglian Water	2
Dole Distribution	3
Golden Lion Re-opening	3
Sepsis	4
Editor's Ramblings	5
Cambs Fire & Rescue	6
Thermal Imaging	7
Cannabis Discovery	7
PC Snippets	8
Snack With Santa	8
Church News	9
Local Events	10
Antifreeze Dangers	10
Townley School	11
Blast From The Past	12
Middle Level	12
CAPALC	13
WWT Swan Feeds	13
Stonea Camp	14-15
Potholes	16-17
Golden Age Event	18
Stamps for the RNIB	18
Club Pages	19-21
Puzzler Solution	19
Manea Signals	20
Our Advertisers	20-25
Cllr Dal Roy	26
Craft Club	27
Las Pasadas	27
Puzzler	27
Photos From Oct/Nov Events	28

Snack with Santa...

Back again this year, at Christchurch Community Centre on 6th December 2025!

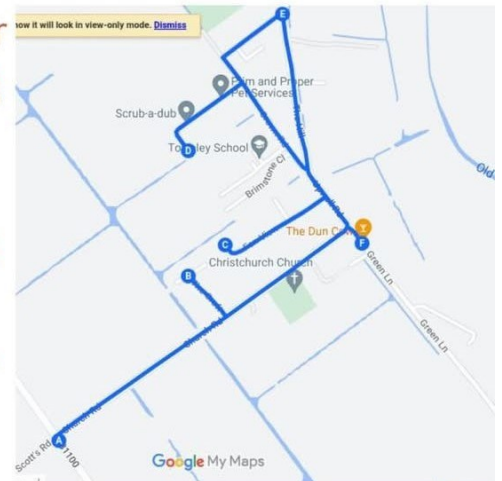
Details & booking information on page 8.



Christmas Sleigh run

Come and meet Santa Claus
himself at
The Dun Cow, Christchurch

Saturday 20th December
Starting at 5pm, starting
at Farmers
Boy, Church Road, The
Croft, Fen View, passing
the school, Crown
Avenue, Wayside Estate,
Upwell Road, then
finishing at
The Dun Cow



Toy Appeal: Hinchingsbrooke Hospital, Holly Ward.
Donation point for Christchurch is 43 Fen View.
Thank you for your Donations!



Defibrillator Training

On Monday 27th October, Lucy Pye ran two CPR and defibrillator courses at the Community Centre, which were well attended by about 30 people.

For those who don't know, Lucy was instrumental in the fundraising and purchasing of the defibrillators around the village, and for a small village, we have 5 of these lifesaving machines around:

- Outside the Christchurch Community Centre
- Back of Townley School
- Outside Dun Cow
- Barn wall on Euximoor (first barn on right as you enter Euximoor)
- Awaiting relocation at the Padgetts Road end of Church Road

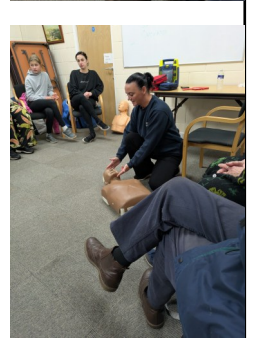
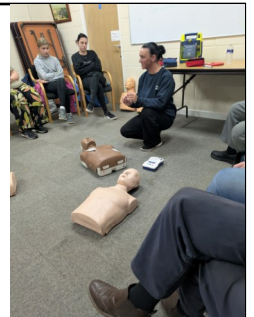
If you are going for a defibrillator, take your mobile phone as not all are unlocked (and in any event, ring the emergency services).

The maintenance of these has now been taken on by the Parish Council.

Lucy provided the training free of charge, a commitment to her belief in how vital this equipment is, and it has certainly saved at least one life in the village in the last couple of years.

If anyone is interested in learning how to use the defibrillators and CPR, message me at editor@theheron.info and when we have enough interested people, Lucy has said she will run another course (again, this will be free to attend).

Thank you to any who donated to MAGPAS (and the person who gave the money to me, this has now gone to MAGPAS).



Anglian Water—planned works

Some of the existing pipes in the area have reached the end of their working life and have caused several bursts in recent years. We're now investing over £283,000 to replace just over a kilometre of water pipes to help prevent future issues and keep supplies reliable for years to come.

Our teams will be working along Fifty Road from 10 November to mid-December, and to do this safely, the road will need to be fully closed while the new pipe is installed. A signed diversion will be in place throughout.

We'll then return in January 2026 for around four months to continue work along March Road, and we'll share more details closer to the time.

We'll be using directional drilling, which allows us to install the new pipes underground with minimal digging and disruption. No one's water or sewerage services will be affected during this work, and if we ever need to briefly turn off supplies, we'll always let residents know in advance.

If you'd like to check updates during the work, you can visit here [https:// www.anglianwater.co.uk/help-and-advice/report-an-issue/additional-contact? alertId=14fca5b0-aaea-4442-899f-9e4e3942ae42](https://www.anglianwater.co.uk/help-and-advice/report-an-issue/additional-contact?alertId=14fca5b0-aaea-4442-899f-9e4e3942ae42)

UPWELL (CAMBRIDGE) CONSOLIDATED CHARITIES

Registered Charity No 203558
(For those living in the Parish of Christchurch)

DOLE DISTRIBUTION

THE TRUSTEES ANNOUNCE THAT THE ANNUAL
DISTRIBUTION WILL BE HELD ON

FRIDAY

5th DECEMBER 2025

AT

CHRISTCHURCH
COMMUNITY CENTRE

Between 2.00 and 3.00pm

The aged and infirm will receive the first consideration.
No able bodied man or woman under 65 need apply.
ONLY those resident in the Parish for at least five years
will be considered.

Further information may be obtained from :-
Mrs J Bliss - Christchurch - 01354 638343

Nonetheless, the pair said they are "excited for our new adventure.

"It's one of those things that you just decide to do in life and see what happens," Tony said.

With a goal of opening for business at the beginning of December (*announced to open 30th November*), Tony said the pub will be serving a weekend carvery to start with, as well as traditional pub lunches during the day.

"It had a good reputation from both sets of previous owners, who we have stayed in contact with for advice, so we are going to do our best to bring that back and keep it going," he said.

Dependant on the level of demand, the couple would like to expand the carvery service to weekdays too.

"I'm very excited and looking forward to it because it has been so long, he said, "but I'm also a little bit nervous because it's basically like starting again - and it's a lot of money to invest". "I'm expecting it to be a bit slow to start with," he added, "but we'll have to see what happens".

From Ely Standard

The Golden Lion

A hidden gem pub in rural Cambridgeshire that closed four years ago is set to reopen with a new look and new owners.

The Golden Lion in Stonea has been taken over by March husband and wife Tony and Angela Demetriou.

Having lived in the town for 30 years, the London-born couple have spent the past year renovating the building.

Tony, who has given up his self-employed work to concentrate on the business, said: "When we popped down, we saw it was in a bit of a state, but there was something about it that we liked. "We saw the potential - it just needed the funds and a lot of TLC."

He added that because it was down to bare brick, they have had to put everything inside - including central heating for the first time in the building's history. "It's had a complete makeover," he said of the interior refresh which has also included separate boilers and electric systems. Having spent more than £150,000, he describes the experience as "a challenge and an expense".



Advertising in the Heron

Quarter Page (14cm High x 9.5cm Wide)

Portrait Format

6 x issues £52 (1 year)

Eighth Page (6.5cm High x 9.5cm Wide)

Landscape Format

6 x issues £36 (1 year)

Please contact adverts@theheron.info or phone Elaine on 01354 638310.

Advertisers - all our advert rates and conditions can be found on our website www.theheron.info. Business advertisers can book a series of 6 adverts (for 1 year's worth of advertising), paid in advance. Adverts for village fundraising events, personal announcements, or small private ads are usually free.

Make sure you're protected this winter

NHS Cambridgeshire & Peterborough urging anyone eligible for their COVID-19, flu, RSV or pneumococcal vaccines to make sure they've had them this winter. Each vaccine has a slightly different eligibility criteria:

1. RSV vaccine – for anyone who is pregnant, aged 75-79, or anyone who turned 80 years old from 1 September 2024.
2. Pneumococcal vaccine – for anyone 65 or over (only one dose is needed).
3. Flu vaccine – for anyone aged 65 or over (including those who will be 65 by 31 March 2025); have certain long-term health conditions; are pregnant; live in a care home; are the main carer for an older or disabled person, or receive a carer's allowance; or live with someone who has a weakened immune system.
4. COVID-19 vaccine – for anyone aged 75+; those aged between six months and 74 years and have a weakened immune system because of a health condition or treatment; and people who live in a care home for older adults.

For some people who have got used to having their COVID-19 and flu vaccine together in winter, this might mean a change for them as the COVID-19 vaccine age criteria has changed from people over 65 to people over 75.

Editors note: If you have received a text message to say you are eligible for a COVID vaccine, but don't fall within the above criteria, then you need to check as these messages have gone out when you may not be eligible (I received one, and was not)

← In addition to these symptoms, also a temperature below 36C (96.8F) or above 38.3C (101F)
Resting heart rate over 90bpm

SEPSIS: THE FACTS

WHY WE SHOULD ALL KNOW THE SYMPTOMS

Sepsis is a life-threatening condition, caused when the body overreacts to an infection. **It kills 44,000 people a year in the UK** – yet it's treatable if caught early. The problem is, sepsis is often mistaken for other conditions such as flu, gastroenteritis or a chest infection, or dismissed as a simple fever in children. So in many cases, sepsis is not diagnosed in time for people to get the treatment they need.

That's why everyone should know the signs of sepsis. And if you think someone may have sepsis, just ask: **"Could it be sepsis?"**

CHILDREN	ADULTS
A child may have sepsis if he or she:	An adult may have sepsis if they show any of these signs:
<ul style="list-style-type: none">• Is breathing very fast• Has a 'fit' or convulsion• Looks mottled, bluish, or pale• Has a rash that does not fade when you press it• Is very lethargic or difficult to wake• Feels abnormally cold to touch	<ul style="list-style-type: none">• Slurred speech or confusion• Extreme shivering or muscle pain• Passing no urine (in a day)• Severe breathlessness• It feels like you're going to die• Skin mottled or discoloured

WHAT TO DO IF YOU SUSPECT SEPSIS:

Call 111 or contact your GP if you're worried about an infection.
Call 999 or visit A&E if someone has one of the sepsis symptoms.

JUST ASK "COULD IT BE SEPSIS?"

At the time of going to press, all information is as accurate and up to date as we can make it. Changes and updates may be published subsequently. All information contributed by outside agencies, including dates etc., will be assumed to be correct.

NB as a matter of courtesy no content from the Heron should be used without prior permission.

Editor's Ramblings

Hello, and welcome to the final edition of 2025 – where did that year go? This will be the second edition put together by our new publisher, Danielle, and I personally think she did a cracking job on her first go, so looking good for the Heron moving forwards.

The County Council is asking residents for their views on matters financial. Follow the link below to read all about it - <https://www.cambridgeshire.gov.uk/news/county-council-invites-residents-to-help-shape-future-spending> - it's your chance to have your say on how you think your money should be spent.

I have spoken to Dal Roy, who has commented that people often don't know how to contact him, so his details are Mobile - 07885 381007, Email - droy@fenland.gov.uk and are included in his contribution in this edition, but will also be included in the contact details for the magazine in future editions – if you have any concerns, he is more than happy to listen and help where he can, or come along to the Parish Council meetings, where he attends frequently.

In this edition, there is information about vaccines and Sepsis – the latter is very personal to me as Tracy recently came down with this, and the speed at which it happened was almost unbelievable, she went from feeling slightly unwell in the evening to being admitted to hospital into the Resus unit around midnight with a temperature of over 40C/106F – left much longer and that could have been fatal, so I thought well worth raising awareness of this.

Other than that, the Heron Team wish all of our readers a happy and healthy Christmas, and see you all in the New Year.

Copy Deadline - The deadline for copy for the edition of the Heron is 16th January

Enjoy reading the Heron?

If you haven't donated already and are interested in helping to support the production costs, you can now donate electronically at: www.madegreat.co.uk/sponsorship

100% of your donation goes towards printing costs.

You can choose to have your name printed in the next issue of the magazine or keep your donation anonymous.



Do you know someone who would like to receive a Heron each month, who doesn't live in the village? Contact us at adverts@theheron.info and we will send them a subscription form.

The cost is £15.00 for 6 editions (including P&P).

EDITORIAL TEAM:

Editorial Team Leader - Clive Benjamin - editor@theheron.info

Editorial Team Members: Elaine Reed-Hughes, Pat Rigby, Tracy Giles-Benjamin, Kay Miller, Danielle Carver

Treasurer, Advertising Manager - Elaine Reed-Hughes - adverts@theheron.info Tel: 01354 638310

Deliveries Manager - Clive Benjamin Tel: 07767 872810

Support—Lewis Bennett (IT), the Delivery & Postal Team, Publishers and Printers

General Queries - enquiries@theheron.info



Website: www.theheron.info



**CAMBRIDGESHIRE
FIRE & RESCUE SERVICE**

As the festive season approaches and people look for presents and take advantage of Black Friday deals, many are looking to save money on electrical items. However, we continue to urge people to Take Charge and Be Safe when buying devices, especially items that require batteries or chargers.

You can help keep yourself and your family safe by following a few simple safety measures, including ensuring to buy electrical items from reputable dealers, being awake and at home when using and charging devices and adding safety to your bedtime routine.

Electrical devices are a key part of everyday life and are often bought in Black Friday deals and as presents for family members and friends. Games consoles with controllers, tablets, laptops and e-bikes and e-scooters are on lots of people's present list. All these items require charging as they contain lithium-ion batteries.

Most devices come with failsafe features to ensure they do not overheat when being charged, but rely on the manufacturers' provided charging cables and adapters to work. Also, using the plug and cables supplied with the product rather than cheaper versions will help charge devices safely.

The Service is reminding people to Take Charge and Be Safe, not only when charging their devices, but also when planning on purchasing devices and presents. Most new items come with a suitable battery and charger, however if you are looking to purchase additional ones then make sure they are the right voltage and are fully compatible. Other things like charging a mobile phone while you are awake and alert, rather than while sleeping, means the device won't be overcharged and risk overheating the battery. This can be the same for any device.

We are encouraging people to plan a good bedtime routine including things like making sure electrical sockets are switched off, all internal doors are closed, any candles are out, heating appliances are off and hallways and stairs are kept clear of obstructions. This will not only help prevent a fire from happening but also ensure an easy escape if one does.

Disposing of batteries safely

Batteries can be a fire hazard if they are not disposed of properly. They should never be put in household rubbish or recycling bins. During the processing of waste or recycling, a battery can be compacted and damaged, which can lead to ignition of the highly reactive lithium, leading to a fire starting. Any kind of battery can cause a fire if not disposed of correctly and safely. This includes vapes or other e-cigarettes as well as standard batteries. Fires involving batteries cause damage to refuse vehicles and roads, as well as significant delays to bin collections and road closures.

How to dispose of batteries

There are many places to safely dispose of batteries. As well as local recycling centres, many shops around the county have collection bins in-store.

To find your nearest battery collection bin, visit either <https://www.recyclenow.com> or <https://www.recycleyourelectricals.org.uk> to check where your closest location is.

Village Skip

At the last Parish Council meeting, it was mentioned that the village used to have a village skip, and it would be interesting to see if there is any interest in this returning, the idea being that the PCC has a skip in the village annually for a few days so that villagers can dispose of bulky items without having to go to March to dispose of their items.

The PCC would be like to hear any thoughts on this, or email to editor@theheron.info and I will pass them on.



Thermal Imaging for a cosier home in Cambs

Once again, we're delighted to offer residents and organizations across Cambridgeshire the opportunity to borrow and learn how to use a thermal imaging camera for free. Join a one-hour online training session to learn how to interpret thermal images, identify draughts, gaps in insulation, and heating problems, and to make your home cosier and more energy efficient. Great for homeowners and renters alike! We also encourage individuals, organizations and community groups to undertake training to survey multiple properties within their community.



In 2024, volunteers from communities across Cambridgeshire undertook surveys of 113 neighbouring homes and community buildings, adding to the 325 properties that were surveyed by individuals who had attended the training for their own homes.

“Really useful tool for assessing the home’s heat loss and for planning improvements” - Borrower

Thermal Imaging Training Dates:

Wed 3rd December 7:30-8:30pm -

<https://cambridgecarbonfootprint.org/events/thermal-imaging-training-14/>

Wed 7th January 7:30-8:30pm -

<https://cambridgecarbonfootprint.org/events/thermal-imaging-training-15/>

Mon 9th February 7:30-8:30pm -

<https://cambridgecarbonfootprint.org/events/thermal-imaging-training-16/>

We only lend cameras to people who have attended the training.

Loan periods are: Fri pm to Mon am, or Mon pm to Fri am, and cameras can be picked up from one of 18 volunteer camera hosts around South Cambs, Cambridge City and Huntingdonshire.

An excellent scheme - very much appreciate the opportunity to borrow the camera -thank you!

More information, and Interviews with experts, volunteers and organisers can be arranged on request.

Contact **Fran Sutton**: fran@cambridgecarbonfootprint.org 07713841391



Cannabis Discovery...

Last night, a man was arrested after we received reports of a laser being shone at a police helicopter, distracting the pilot, and placing the aircraft and crew in serious danger.

Thanks to the helicopter’s thermal imaging camera, officers were able to pinpoint the suspected source of the laser to an address in Wisbech. While investigating, a heat source was detected in the loft area of the property.

Officers attended the address and arrested a man on suspicion of endangering an aircraft. A subsequent search of the property uncovered a small cannabis cultivation.

Shining a laser at aircraft is not only reckless – it’s a criminal offence that can have life-threatening consequences.

Investigations are ongoing.

From Fenland Policing Facebook Page

PC Snippets

PC meeting minutes can be found online at <http://www.christchurchparishcouncil.org.uk/minutes/>

What Has the Parish Council Ever Done for Us? (With apologies to Monty Python!)

The Parish Council is busy developing a range of projects to improve the village:

- Removing vegetation in Green Lane to keep traffic off the roadside verge;
- Working with Clarion Housing Group to create a new small public space on The Hill; and
- Securing funding for traffic calming in Wayside Estate.

Our two larger projects for the coming years are the Nature Park and the Village Centre.

The Nature Park and Dog Walking Area alongside the Recreation Ground will be levelled and seeded shortly. Planting of trees and hedges will follow next year.

The Village Centre project will transform the area around the Village Sign, celebrating the history of the village and providing an attractive public space.

Santas and Skips

An unusual combination and fortunately unrelated! Many years ago, the Parish Council provided a skip once a year to enable residents to dispose of their rubbish. It has been suggested that we might reinstate this. Do you think that it's a good idea? If so, when and where should it be situated? Please speak to a Councillor or contact the Clerk.

Finally, a date for your diary. Our friends at the North Pole tell us that a man in a red suit will be visiting Christchurch by reindeer tractor on the evening of Saturday 20th December.

Look out for further details nearer the time.

It's Good to Talk

If you would like to share ideas for any of these projects or volunteer to help us, please speak to any Councillor or come to a Parish Council meeting on the second Monday of each month at 7.30pm in the Community Centre.

Season's Greetings

The Parish Council would like to wish all parishioners a relaxing and enjoyable festive season and a happy and healthy 2026.

Dave Gibbs,
Clerk to the Christchurch Parish Council



Church News

Services in the Benefice for December

- 7th Dec - **Christchurch** Morning Prayer 10.30am
Manea Evensong 6pm
Doddington Holy Communion 10.30am
- 14th Dec - **Christchurch Carol Service 5pm**
Manea Holy Communion 10.30am
Wimblington Morning Prayer 10.30am
Doddington Carol Service 6pm
Benwick Holy Communion 3pm
- 21st Dec - **Christchurch** Holy Communion 10.30am
Manea Carol Service 6pm
Doddington Morning Prayer 10.30am
Wimblington Carol Service 3pm
- 24th Dec - Manea Christingle 2.30pm
Welney Carol Service 4pm
Doddington Holy Communion 11.30pm
Wimblington Crib Service 4.30pm
- 28th Dec - Manea Morning Prayer 10.30am
Wimblington Holy Communion 10.30am

Services in January follow the regular pattern
Christchurch and Doddington 1st and 3rd **Sundays**
of the month. Manea and Wimblington 2nd and 4th
Sundays of the month. Benwick 2nd Sunday 3pm.
Welney 4th Sunday 3pm.

Sunday 14th December

Christchurch Community Centre

Carol Service

4pm Christmas Refreshments

5pm Service



**Look out on Facebook for more
exciting events in 2026; starting with**

Lunch and Film on

Saturday 24th January 12.30pm

Quiz Night on

Saturday 28th February at 7.30pm



Saturday 6th December

Christchurch Community Centre

10.00am - 3.00pm

Christmas Fayre



Loads of stalls to buy interesting hand-crafted gifts and cards.

Cake stall, games and raffle.

**Children share a meal with Father Christmas and
get an early Christmas Present!**

(Pre book please with Chief Elf Karen Beers)

Bacon rolls, cheese toasties, tea and coffee.

Local Events

What	When	Where
Christmas Fayre —Stalls, Father Christmas, Refreshments.	Saturday 6th December 10am—3pm	Christchurch Community Centre.
Skylark Christmas Market & Craft Fayre Free entry.	Saturday 6th December 10am—4pm	Skylark Garden Centre, Manea Road, Wimblington, PE15 0PE.
March Christmas Market For details, see— https://www.fenland.gov.uk/article/16019/March-Christmas-Market	Sunday 7th December	March Town Centre, Market Place, Library, St Peters Church.
Golden Age Fair (over 60s)	Friday 12th December 10am—1pm	GER Sports Club, Robingoodfellows Lane, March, PE15 8HS.
Wisbech Christmas Fayre Santa, Live entertainment, 60 stalls, Festive food and drink, Indoor Craft fair, Free children's activities.	Sunday 14th December 10am—3pm	Wisbech Town Centre (free parking).
Fenland Farmers Christmas Sleigh Run See front cover for more info!	Saturday 20th December 5pm onwards	Christchurch Village.
Christmas Lights Spectacular Father Christmas, Farmers Market Stalls, Raffle.	Monday 22nd December 2pm—6pm	Thurlow Nunn Standen, Wisbech Road, Littleport, CB6 1RA.
Ely Food and Farmers Market	Tuesday 23rd December 08:30am—3:30pm	Ely Market.
Film and Lunch Speak to Helen Chappell for details.	Saturday 24th January 11am—4pm	Christchurch Community Centre.
Burns Night Carvery (Heron Fundraiser) To book—Danielle 07599456983.	Sunday 25th January 12pm—4pm	Christchurch Community Centre.

Anti Freeze and Screenwash

If you are topping up anti-freeze or screen wash in your car, and you spill some, please clean it up.

A few drops of either, followed by rain, creates a puddle of sweet tasting liquid for pets AND wildlife to drink. Poisoning with both of these items is horrific, it's quick-acting and rapidly causes issues like kidney failure.

Signs of antifreeze poisoning - the animal may become wobbly, start dribbling, or vomit soon after drinking it. At the Hogs Bum we have had 3 cases in the past two weeks and all the hoglets died.

A few minutes cleaning up spills will save lives.

From Hedgehog Bottom Facebook Page



TOWNLEY SCHOOL AND NURSERY

Christchurch, Wisbech, Cambs. PE14 9NA
office@townley.cambs.sch.uk
Website: www.townley.cambs.sch.uk
01354 638229



Facebook—Townley School and Nursery

Remember that our website has lots more information about school.

November 2025

The school year at Townley is now well under way. The children are settled in their classes and working hard. On the 11th of November, all children from year 1 - 6 walked to the church in Christchurch - The Church of Christ. Each class had made wreaths and other crafts which they placed around the memorial. Children from Emperor Class read remembrance poems that they had written themselves. A two-minute silence was held. All the children were very respectful and made us proud. Our thanks goes to WWT Welney Wetland Centre for our Forest School equipment and the lovely binoculars. Paul spent time with Mrs Higgins showing her how to use them. We can't wait to see the nesting birds!

Emperor Class (Y5/6) - After learning about American service men and women coming to East Anglia during WW2 to support the war effort (The Friendly Invasion), Emperor Class wrote remembrance poems and incorporated what they had learnt in history into their poems. We are currently reading 'Pig Heart Boy' by Malorie Blackman and this links to our learning in Science about the circulatory system.



Dragonflies Class (Y3-6) - The children have enjoyed a Forest School session led by Miss Crawford, where the children took turns in their favourite activity of the rope swing! We also enjoyed exploring the forest with Townley's new binoculars. In Art the class have created some lovely bonfire and firework pieces using paint and collage

Emerald Class (Y3/4) - Emerald class have continued with Forest School this half-term and they are enjoying their sessions, even when it is raining! We have been reading 'The Pebble in my Pocket' by Meredith Hooper. In English we are writing a non-chronological report about rocks which links to our previous Science unit. We are currently learning about Animals, including Humans.



Hawker Class (Y1/2) - We are currently reading 'Where The Wild Things Are' by Maurice Sendak. In History we are learning about toys of the past. We explored a box of historic toys that was kindly loaned to us from Ely Museum. The favourites were a Victorian porcelain doll, a milk truck (possibly from the 50's) and a 1930's wind up bird. The children absolutely loved finding out about the old toys and dressing up in Victorian clothes! In Science we are learning about plants and explored the plants we have at school with magnifying glasses.

EYFS Class (YN/R) - We have been reading 'Room on the Broom' by Julia Donaldson. We have been making magic wands and broomsticks, mixing lots of potions and even writing our own magic spells. In Forest School this week the children were turning sticks they found into magic wands by decorating them with paint, coloured wool, beads and items they found in the forest. We also played a new hide and seek game called 'Witch in the Woods' and learnt a new song 'I'm a mean old witch with a hat'.



From the Heron, December 1987

Townley Watch Group

The group consists of 20-25 Junior-aged children who meet after school once a fortnight to study all aspects of Conservation. We recently took part in the nationwide Watch survey of acid rain, which involved collecting and testing rain on each wet day in October. We will be able to compare our results with those of other areas once the records have all been processed.

We are doing our part for energy conservation by collecting and delivering various items for recycling and would gratefully receive any of the following in school –

- Glass bottles and jars which we will be putting in the bottle banks
- Used stamps
- Milk bottle tops and tin foil for Glynis's collection
- Ring pulls
- Plastic ice-cream containers

We are also keen to collect any tokens from wrappers, boxes etc. for which manufacturers will make donations to charities, e.g. those at present on Mars bars wrappers, in aid of Great Ormond Street Hospital

Editorial—December 1987

I suppose in life there are always changing seasons and not all things go on the same old way month in and month out. As you will see from this month's Heron, the quality of printing has deteriorated. The Duplicator is really complaining now and despite offers to keep it going, it is now no longer able to do a proper job.

At the present time, no finance is available to overhaul it without which a decent copy is not possible. On the financial front the Heron is now out of funds and in fact out of pocket!

As you are aware the Heron team has dwindled with Len Driver moving away and Mr. & Mrs. Denny pulling out. For our own reasons, Noela and I will no longer be able to continue to produce the Heron and this will be our last edition.

If anyone is interested in taking over the production and challenge of this great old 'Bird' please do contact us and we will give you any help we can.

ALAN SMITH



middle level
commissioners

Main Drain Desilting Works October 25

We will be starting the final phase of our Main Drain desilting works on 30 October focusing on the stretch between St Germans Pumping Station and upstream of St Marys Bridge.

Our contractor BJ Plant has been busy spreading the material that has been placed on the bank from the earlier phase of work. They have now started construction of two settlement lagoons on the right-hand bank between St Peters Drove and St Mary's Bridge, on land owned by Middle Level Commissioners.

The desilting will be carried out by our specialist contractor Royal Smals, using a Cutter Suction Dredger. This is a powerful but low noise machine

that gently scoops up the silt and pumps it through a floating pipe into the settlement lagoons.

The work will take around six weeks, operating 12 hours a day, 7 days a week. It's a short project with most of the work happening within the Main Drain, so should cause minimal disruption. However, to ensure everyone's safety during the works, there will be a temporary closure of the public footpath. This will be in place for up to 6 months.

We are committed to protecting the environment every step of the way. That's why we're taking thoughtful measures such as conducting ecological assessments, carefully managing silt removal, designing lagoons with nature in mind and embracing wildlife-friendly practices.

Middle Level Commissioners, 85 Whi4lesey Road, March, Cambridgeshire, PE15 0AH
www.middlelevel.gov.uk admin@middlelevel.gov.uk Telephone: 01354 653232

☞ Let's work together to create the best care journey for Cambridgeshire.

• **Local People** • **Personal Care** • **Independent Living** •

Could you make a difference in your community?

Join the growing network of CMEs — small, local care businesses supported by Cambridgeshire County Council.

We'll help you set up and grow your own enterprise offering:-

- Personal care and support
- Home help (gardening, food prep, shopping etc) and companionship
- Pet care, admin, transportation, socialisation and more
- Respite care for unpaid (informal) carers

What's in it for you?

- ☒ Free business and care training
- ☒ Guidance and ongoing support
- ☒ Access to local care networks
- ☒ A chance to do something truly meaningful

Whether you already work in care, run a small service, or are looking for a rewarding new start — there's a place for you in the CME Network.

☘ Local people caring for local people.

✉ Get in touch to learn more and join the CME Network today!

Contact the CME Development Team for one to one support on 01223 706100 or

cmdevelopment@cambridgeshire.gov.uk

For more info go to www.cambridgeshire.gov.uk/cm

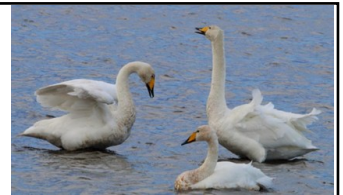
CAPALC Ltd

The Norwood Building, Parkhall Road, Somersham, Cambridgeshire PE28 3HE

WWT—Swan Feed

3:30pm daily until 28th February 2025

Enjoy one of the best wildlife experiences in the UK this winter, from a comfy, heated hide! Experience one of our winter wild swan feeds enjoying commentated wild bird feeds from the comfort of our centrally heated hide.



Time: 3.30pm daily

Please note: 6.30pm floodlit feeds Saturdays only

Cost: Free to members, included in admission - you will need to purchase an admission ticket, but do not need to book spaces at the actual feeds.

Location: Main observatory hide

We advise arriving at the centre 30 minutes prior to the swan feed.

The excitement builds as the birds get ready to be fed, swans and ducks line-up waiting for the guide to appear. The live commentary begins and after an introduction to the reserve, the guide makes their way out to feed the birds. Watch a serene lagoon turn into a hive of activity as the birds feed! Enjoy close-up views of whooper and mute swans, the guide will point out any family groups or ringed individuals.

The pochard are busy diving beneath the surface of the water for the grain and the mallard say 'bottom's up' as they get in on the action.

After the feed, there is time to ask the guide any questions.

Open every day, except Christmas Day



Stonea Camp

Roman Eyes on the Iceni: Tacitus, Cassius Dio and Stonea Camp

Stonea Camp sits as a low earthwork on a gravel island in the Fens and is Britain's lowest lying hill fort. During the Iron Age it would have been a prominent dry island in a marshy landscape. Its banks and ditches show several phases of occupation.

The site lies on the edge of Iceni land and close to the borders of the Catuvellauni and Corieltauvi (sometimes called the Coritani), and because of this situation, Stonea Camp has long been seen as an important gathering place for meetings, trade and spiritual ceremony. To understand what the Iceni were doing there and how the Romans later wrote about them, we have to rely mostly on two Roman historians: Tacitus and Cassius Dio. They are both invaluable in their writing, but each writer brings their own viewpoint, shaping how we read the Iceni's past.

Tacitus: Senator, Historian, and Son-in-law - Publius Cornelius Tacitus (born around AD 56 – passed after AD 117) rose from an equestrian background up to the senatorial elite, under the Flavian emperors. His writings include the *Agricola*, *Germania*, *Histories* and *Annals*. Tacitus is especially important because he married Julia Agricola, the daughter of Gnaeus Julius Agricola, the governor who led the Roman expansion deep into Britain during the late first century AD. Tacitus's book called *Agricola* is both a biography of his father-in-law and a sketch of the conquest of Britain.



Tacitus's family links matter because he did not just draw on official records for his writing, but he tapped into Agricola's own memories and reputation. In his book called '*Agricola*', Tacitus presents his father-in-law as a model governor and portrays the Britons as brave but fated to lose against the Roman might. There is a mixture of admiration for Agricola and criticism of bad emperors, which colours much of his writing, including parts of the *Annals* written about Britain. Scholars have long noted that Tacitus wrote with a senatorial outlook, he was proud of Rome's traditions and wary of imperial power, so his account of Britain often serves as a moral story as well as an historical account. He wanted to show good governors like Agricola in the best light and bad emperors as oppressive. Britain became a stage for that contrast. Tacitus dramatised the clash between Roman discipline and imperial corruption. His Britons are brave but doomed, a way to highlight Rome's moral decline.

Cassius Dio: Senator and Compiler - (born around AD 155 – passed AD 235) was a senator who wrote much later than Tacitus and he wrote in Greek. His book, called '*Roman History*' covers Rome from its beginnings through until the time Dio lived.



Where Britain is concerned, Dio is best known for his work on the Boudiccan revolt of AD 60/61 and offers dramatic scenes, compelling speeches and high casualty rates. He is far more limited in his earlier writings, but his work helps fill in gaps left by Tacitus. Dio's perspective is different. He wrote for a broad imperial audience two centuries after the Roman conquest. He cared less about senatorial virtue and more about the stability of the empire. Because of that, his Britons often appear as a generalised 'barbarian' people, while Rome stands for order. Yet Dio's narrative of Boudicca's war shows the Iceni's grievances, their warrior culture and helps us to understand the long-running tensions between Rome and the East Anglian Celtic tribes. Unlike Tacitus's personal connection to Britain, Dio wrote later, relied on earlier sources and liked rhetorical speeches. Dio's Britons are less individual and more part of a pattern showing the empire's challenges. His interest is in scale and inevitability rather than personal virtue, standing the Iceni and their world.

Why both historians matter for Stonea and the Iceni

1. Setting the scene: Tacitus and Dio explain the Iceni's political situation. They both tell us about rulers such as Antedios (Anted) and later Prasutagus, who acted as client kings under Rome. These arrangements meant the Iceni kept some autonomy but had to accept Roman oversight and restrictions, including conditions set in regard to the Celtic tribe's weapons. Without these writers we would not have known how the Iceni fitted into the wider story of Roman Britain.
2. Culture and grievances: Tacitus and Dio give us glimpses of the Iceni's wealth, leadership and warrior ethos. Dio's vivid description of Boudicca's revolt shows how deep the resentments ran. This helps us imagine what sort of community gathered at places like Stonea Camp, not just farmers but also traders, leaders and warriors.
3. Linking the text to earthwork: Archaeologists interpret Stonea's banks, ditches and finds through the lens of these Roman texts. The writers provide the historical backdrop that makes sense of the archaeology: a prominent Fenland stronghold on a tribal border used for meetings, ritual and perhaps refuge.
4. Evaluating bias: Knowing Tacitus's and Dio's perspectives helps archaeologists read their descriptions with caution. For example, when Tacitus mentions a fortified place with a narrow entrance, it may be rhetorical rather than a precise plan. Comparing this with the actual layout of Stonea helps test the match.

Toward a balanced view of Stonea Camp

Combining Tacitus and Dio gives us a picture of an East Anglian people caught between autonomy and Roman control. Stonea Camp, as a Fenland stronghold on the edge of their territory, could have been a ritual gathering place, seasonal market, and in troubled times a refuge. Its banks and ditches offered some defence but also a stage for display and ceremony. Finds of high-status objects, coinage and signs of violence show it was more than an ordinary settlement.

We should remember that we see the Iceni mainly through Roman eyes. Tacitus's and Dio's texts survive because Rome won; the Iceni's own stories come to us only in fragments; earthworks, coins, and bones. Recognising Tacitus's personal stake in Britain and Dio's rhetorical tendencies does not make their work useless; it helps us use them more wisely. They remain the key narrative sources for understanding Stonea Camp.

Conclusion

Tacitus's family links to Agricola gave him a unique angle on Britain but also a personal reason to shape the story in a certain way. Cassius Dio, writing much later, systematised that story for an imperial audience, focusing on scale and inevitability. Both authors are essential for reconstructing the history of the Iceni and for making sense of Stonea Camp. However, both must be read critically, with awareness of their viewpoints. In doing so, the Roman texts and the archaeology illuminate each other: the writers explain why the Iceni gathered and lived as they did, and the earthworks at Stonea give a grounded counterpoint to the Roman narrative.

If you would like to know more about Stonea Camp, or would like information on forthcoming open days at the site, a presentation or guided tour, please email Heritage, Culture & Community (HCC) Stonea at hccstonea@gmail.com, follow our Facebook page, <https://facebook.com/hccstoneacamps>, or our Instagram page, https://www.instagram.com/hcc_stonea, we would be delighted to assist.

Amanda Carlin – Chairman HCC Stonea.

Potholes—reporting and your rights

You hit a pothole and hear a horrible clunk – your car's been crocked and it's going to cost you. But whoever controls the road has a legal duty to maintain it to a fit standard, and if they don't, they should pay for repairs. Pothole damage cost drivers a whopping £579 million in 2024, according to the AA, with repairs costing an average of £300.

Reclaiming for pothole damage – what are the issues?

If you've hit a divot or a crack and your car's damaged, the process of filing a claim can seem daunting, and many drivers don't know where to start. But *if* the authority responsible for maintaining the road failed to do so properly, it's possible to successfully claim for repairs in full.

Of course, you can only claim if the authority was at fault. Potholes are inevitable, particularly in winter, so the key question is whether it could and should have fixed it before your car hit it. Remember, in reporting a pothole, you're being a good citizen. And if the authority was negligent and didn't do the checks it should have, claiming for repairs can help put pressure on the powers that be to keep the road safe and in good condition. Equally though, this is taxpayers' money and in the short term, claims can put councils under real pressure, so you'll need to decide for yourself what the right thing to do is.

A pothole is a road defect that causes an immediate risk or hazard – and usually needs to be at least 4cm deep - To count as a pothole, the hole must usually be at least 40mm deep – about the height of two 20p coins. If the one you hit wasn't that deep you can still make a claim, but it could be tougher.

You need to prove it was the pothole wot dunnit - Hitting a pothole normally causes damage to a car's tyres, wheels or axles, and you'll often know immediately that something's wrong. To claim for the damage, you'll have to prove the pothole caused it – that the repairs you're having to shell out for were specifically caused by your impact with the pothole. Ask your mechanic to put this in writing for you.



Check who's responsible – then report it - As soon as you've hit a pothole, make sure you warn other drivers. Whether or not you intend to claim, calling it in will help to keep the roads safe (and if you do intend to make a claim further down the line, it's important to be able to show you did your civic duty).

Even if you don't think you'll qualify for compensation after hitting a pothole, ALWAYS report it. We need to put pressure on the authorities to fix these problems. That's not just about making it costly when they don't fix them, it's making sure they know about problems on their roads. Different authorities are responsible for maintaining certain types of road, so you'll need to check who to contact. When you call up the relevant company, ask if claim forms can be sent to you, or if you can download them online.

You can claim if your vehicle's damaged and the authority responsible for the road failed to properly maintain it - The UK's highway authorities and agencies are legally obliged to maintain roads to a safe standard. That includes fixing potholes. There's no explicit sentence in law which covers claiming for potholes, but there are laws which force authorities to keep the roads safe – and that's what you'll be claiming the authorities have failed to do. In **England and Wales**, the relevant legislation can be found in Parts 42-58 of the [Highways Act 1980](#).

If your claim's unsuccessful, the last resort is to go to the small claims court.

This article is extracted from Money Savings Expert – go to:

<https://www.moneysavingexpert.com/reclaim/pothole-claims/> for the comprehensive guide to claiming.

To report potholes – this system has changed recently, but can be found here:

<https://www.cambridgeshire.gov.uk/residents/travel-roads-and-parking/roads-and-pathways/roadworks-and-faults>



Editor's own experience – I hit a pothole on Padgetts Road in February 2024 which buckled my wheel, damaged the wheel bearing and knocked my steering out of alignment. At the time, the weather was wet, so the pothole wasn't visible, it was just another puddle at the edge of the road and an oncoming tractor meant I had to stay left, but when I went back the following day to measure it, it was 200mm/8 inches deep (5 times the depth that qualifies as a pothole). I checked the reporting website and there had been a couple of reports a few weeks earlier about this, stating how

dangerous it was (and that damage had been done), but no action had been taken – if it had been a motorcycle that had hit this, it is my belief that this could have caused serious injury. I therefore reported it again and took out a claim to cover the cost of the damage, which is done through Northampton for some reason.

They state that it can take up to 3 months to process, and my belief is that this is the first stage of trying to put you off from claiming. Incidentally, having done nothing to repair the fault, despite the earlier reports stating the defect was dangerous, within 3 days of me putting in a claim, a temporary repair was done on the road, even though this was not too long before Padgetts Road was due to be fully resurfaced – an acknowledgment that the defect was dangerous. At about a week short of the 3 months, my claim was rejected, so I wrote back giving them 2 weeks to reconsider at which point I took out a small claims case against them (and since I was doing this, added in my mileage costs in getting the repairs done – something I hadn't included in the original claim) and now I was in contact with their solicitors who initially rejected the claim, and tried to get it struck out, and gave me reasons why I wasn't entitled to claim. It was then handed to another solicitor within the firm, who made me an offer of 50% of the claim (and subsequently, accidentally made me a revised offer of less than this), which I rejected, and then they finally made a full offer just before it was due to go to court.

If you have damage caused by a pothole, then I strongly encourage you to claim, especially if the fault has been previously reported – while it does take money out of the repair budget, it does actually force them to repair the most dangerous defects, and ultimately, it is their fault that your car has been damaged, and not yours. And make sure you report all defects – if we don't report them, then we can't complain that they aren't repaired.

From Steve Barclay's Facebook page



Why is the Cambridgeshire County Council gagging their contractor over the state of pothole repairs?

After raising multiple concerns on behalf of residents across Fenland over the terrible number of potholes, Cambridgeshire County Council continued to be opaque in their responses. So, I reached out to the contractor M Group who do the work repairing the potholes for the council to ask them directly to explain why things are so bad.

They explained a number of issues, such as the clock on complying with 21 days for a pothole repair does not start when a resident reports it. Instead, it only starts once the County Council has been out to the road concerned and identified the repair and reported it. So often there is a delay, and it is not transparent how long this is. M Group also said a new digital database was in place which shows when the County Council report cases. As such it should be easy and cheap to be transparent regarding where delays occur, and to provide information more widely on how many potholes there are, and which have received a temporary or permanent repairs.

The details matter because a repair done with the Dragon Patcher can last several years according to the contractor but residents report this is not the case. The contractor acknowledged manual repairs can last as little as a month. So, transparency will allow scrutiny of how long repairs last. In addition, the contractor states the Dragon Patcher completes 150 repairs a day, whereas manual teams typically complete 10 to 20 potholes a day. Some roads are so bad they need resurfacing not patching up which is another contract M Groups has with the county council on which there is virtually no information available.

After a good conversation with the contractor, they agreed to send me information to share with residents. When this was delayed, I chased it up. Today they have U turned and said they cannot share this information because the County Council have instructed them not to do so. Their reply is below. "Through the process of compiling the paper and subsequent engagement with Cambridgeshire County Council to ensure the information shared was comprehensive, CCC have requested that you engage directly with them through the MP engagement protocols in place."

Yet I had already over many weeks asked for this information from the County Council who did not share it.

If you think the County Council should be transparent, feel free to contact the Chief Executive Stephen Moir on chief.executive@cambridgeshire.gov.uk

They clearly think Fenland residents should not be told what is happening on their roads, and why they are so badly repaired

A festive event is inviting people to enjoy entertainment, refreshments, and some Christmas cheer.

Fenland District Council's free Christmas Golden Age fair, designed for residents aged 60 and over, will take place on Friday, December 12, from 10am to 1pm at the GER Sports Club on Robingoodfellows Lane in March.

The event will feature live entertainment, seasonal treats, and a Christmas gift for every guest, donated by members of the community through the Golden Age Christmas Appeal.

Councillor Sam Clark, Golden Age team leader at Fenland District Council, said: "We'd like to say another huge thank you to the people of Fenland for supporting the Golden Age Christmas Appeal in its second year. "The appeal shows our older residents how valued they are and ensures every visitor to our event has at least one gift this Christmas."

The fair will also include a choir performance and an opportunity to explore a range of services and support available to older people in Fenland, all in a friendly and informal setting. Councillor Clark said: "Golden Age events are open to all over 60s and are an unparalleled opportunity to discover opportunities, services and support available for older people in Fenland in a welcoming, informal environment.

"We welcome visitors to stroll the stands of dozens of different organisations and partners who are there to chat about what they offer, hand out leaflets and information. "These events are so valuable to everyone, and for the vulnerable and isolated among our visitors we know they're vital."

The Golden Age Christmas Appeal is run in partnership with Head to Toe, the official charity of Cambridgeshire and Peterborough NHS Foundation Trust.

The trust provides district nursing care for older people and those with long-term conditions and mental health services.

Any leftover gifts will be distributed to vulnerable older residents by healthcare professionals in Fenland.

More information is available at: fenland.gov.uk/goldenage.

From Sophie Skyring, Cambs Times



SAVE YOUR STAMPS... USED OR NEW... FOR THE RNIB

Collect stamps for the RNIB and make a difference to blind and partially sighted people.

Please place them through the door at Grasshopper Cottage, 5, Upwell Road, Christchurch.

I collect stamps for the RNIB all year long. When I have a goodly number, I send them off to the charity.

What type of stamps can you send?

We accept all stamps: new or used, first or second class, foreign, first day covers, presentation packs or albums.

Please don't send large gold Post Office labels or pre-printed postage marks as these have no value to RNIB.

Christmas is coming... so remember to cut carefully 1cm around the stamp and recycle the rest of the envelope.

Annie Nason.

R N I B

Christchurch Book Club



October's surprise book was "Whale Fall" by Elizabeth O'Connor about a young woman living on a remote island in 1938 in a small community living their traditional life but who sees an opportunity to leave the island and seeing the world but feeling the need to stay and care for her sibling.

November's book was "The House of Broken Bricks" by Fiona Williams. A very different book, it follows a family dealing with a tragedy in their own way. The husband has grown up in the countryside but his business is struggling. His wife is from London but finding it hard to settle and longs for her old life. Their son tries hard to live up to his twin's popularity. As the seasons change, can the family find a way to reunite through their grief and move on?

The next meeting will take place on Tuesday 2nd December. A new book has been ordered called "In the blink of an eye" by Jo Callaghan. For some members of our book club, they prefer to read the book electronically rather than a physical book but it's a personal preference.

New members are always welcome.

For further details or if you would like to come along to the next meeting and require details of the venue, please contact Pat Rigby on 07776 142642.



Christchurch Gardening Club

"A Welcome Return"

The gardening club returned to the Community Centre on Tuesday 21st October for their, regular monthly meeting and a third visit from Mr David Reeve, who was there to give part two of his talk on "Protecting the Royals".

David headed up the Police Forces Royal protection at Sandringham, as well as organising the annual Flower Show. The stories he tells are endlessly entertaining, insightful and always respectful of his charge's privacy.

A first-class raconteur, David kept the club members enthralled for well over an hour, staying on to chat and answer any questions that his audience still had. He is now the Chairman of the committee arranging the Sandringham Flower Show.

It was all change in November as the club wound up with the final meeting of the year. The next meeting will be the AGM on Tuesday 17th February 2026. This meeting will decide the direction of the club for the next year, as well as any changes to the committee.

However, the November meeting was the clubs most social event with a catered meal at the Community Centre. This year we have had to move from our normal third Tuesday of the Month to Tuesday the 25th of November.

To join the club or for more information please call 01354 638 230

Steve.

Puzzler Solution

The Puzzler is on Page 23!

X							
					X		
			X				
						X	
		X					
				X			
	X						
							X

Heron Fundraiser Carvery!

Sunday 25th January, 12—4pm at Christchurch Community Centre.

£13.00 per person, including dessert!

To book—Danielle 07599 456983

ALL profits to Heron Magazine.

Carvery Provided by The Village Cakery.





End of an era as semaphore signals are taken down

A railway historian says he believes the traditional semaphore signals removed from a rural railway station could have been the last in use in the entire Eastern region.

The wooden signals were dismantled from the trackside at Manea, in Cambridgeshire, on 1 November. Network Rail confirmed they were the last semaphore signals on the Ely-Peterborough line, but the company was not completely sure if they were the last on the East Anglia system.

Semaphore signals have been part of railway life since the 1800s and are currently being upgraded across the network - being replaced by a modern light system. They were controlled by a system of levers within a signal box.

Peter Wright, 78, a volunteer at the March and District Museum and the son of a Fenland railway man, said that Manea was, to his knowledge, the last bastion of Victorian mechanical signalling systems in East Anglia.

He said that signals and points were all controlled by wires and rods, levers and pulleys, with the whole system known as "mechanical signalling".

"The semaphore signals are being replaced with colour light signals (like traffic lights)," he added.

"Heritage railways do continue to use semaphore signals - so you can still see them at places like Nene Valley Railways in Peterborough, but as far as everyday commuter services go, they could have now disappeared forever in our region."

Richard Foster, the associate editor for Trackside railway magazine, said semaphore signals had quite a history.

"The signals themselves were called semaphores, dating back to the days of the flags," he said.

"If the signal arm is in the horizontal position, the line ahead is not clear; with the arm either pointing up or down, the line is clear."

Images by John Devine and Getty images,

Article from John Devine, BBC News



Christchurch Hobby and Craft Club

**Every Tuesday
10.00 AM- 1.00 PM**

Christchurch Community Centre

- Bring your art, craft or hobby along to the club to work on and share with like-minded friends.
- Maybe you will introduce us to something new or find something you would like to try, i.e. artwork, needlework, crochet, card making, Lego, or maybe there is a jigsaw puzzle looking for someone to finish while you are thinking of what to start.

Interested?

Contact Janet Harper on 07941 465319 or Pat Rigby on 07776 142642



Indoor Short Mat Bowls

Meets every Monday 7-9pm at Christchurch Community Centre.

ALL WELCOME! (Spare bowls available to loan.)

For further details call Hazel Spry on 07768 648619 .



Christchurch Women's Circle

In October our members heard a very interesting talk/presentation by our chairman Linda Jack on the history of Pollock's Toy Theatre in Covent Garden, London. Linda is a descendant of the family and as well as sharing the history, brought along examples of how the theatre worked, original and reproductive items were on show for us all to look at and enjoy. A privilege to hear such a fascinating story and a chance to peep into the past of yester year. Thank you, Linda.

November meeting was well attended. A very creative evening making Christmas Wreath's, using a basic ring and decorated to each members choice, using ribbons, bows, baubles, tinsel etc. much of which had been donated by a past member of our community Wendy Yates - a very kind thought, thank you. (Wendy you would have loved to have seen them all).

Our competitions continue to be popular, including some very interesting items, it is amazing what our members bring along.

December 16th please note change of date. It will be our Christmas social evening with refreshments, music etc.

January 13th Our first meeting 2026 Speaker Lucille Hird from Cambs ACRE on the benefits of using a Slow Cooker plus members sharing their favourite recipes. Sounds like a mouthwatering evening. Competition an item beginning with A.

Visitors and new members always welcome.

Our next six months programme is nearing completion and will be published in the next Heron.

Best Wishes to everyone for the Festive Season.



A & B SMITH DOMESTIC APPLIANCES SHOWROOM

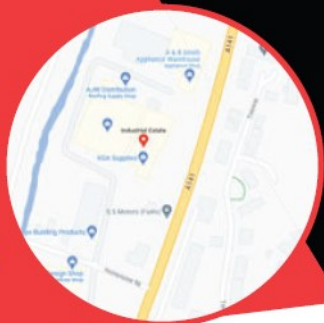
Unit 1
Honesome Industrial Estate,
Chatteris,
PE16 6TG

☎ 01354 575079

Open to the public
Open

Monday - Saturday
9am - 5pm

Same day delivery



BOSCH **Vax™**
CANDY
BEKO



Hotpoint

Indesit

DeLonghi

Christopher THE LOCKSMITH

ARE YOUR LOCKS BEHAVING BADLY?


We Value Old Fashioned Customer Service
A Local Trusted Family Business Since 1989

 Specialist in UPVC & Wooden Doors

 No Call Out Charge

 No Fix No Fee

 All Work Fully Guaranteed

 10% Senior Citizen Discount



For More Advice & Help Call Christopher:

07772 111 222

www.christopherthelocksmith.co.uk

CHRISTCHURCH ELECTRICAL

Simon Freeland Hill Farm, 3 Church
Road, Christchurch, PE14 9PQ

Tel: 01354 638802 Mobile: 07727 046439



Domestic electrical work undertaken.
No job too small.
Free quotations / estimates.



www.electricalcompetentperson.co.uk

www.electricalsafetyregister.com



ALL PESTS CONTROLLED

Domestic & Commercial Pest Control

www.allpestscontrolled.co.uk

WOODWORM

BEDBUGS

MOLES

MICE

RATS

ANTS



SQUIRRELS

RABBITS

WASPS

BIRDS

FLEAS

BEEES

Call Danny on

Tel: 01945 772 153

Mob: 07795 073 985



SARAH JANE'S NURSERY

Mobile: 07905 368729

The Bungalow, Fifty Road, Manea, Cambridgeshire.
PE15 0HN

Sarah Cross

sarahjanesnursery@outlook.com

Also on Facebook

FOUR SEASONS TREE SERVICES

Qualified & Professional Tree and Client Care

PRUNING ● LOPPING ● FELLING

PLANTING ● REDUCING & RESHAPING

CROWN RAISING ● HEDGE TRIMMING

THINNING ● POLLARDING ● STUMP REMOVALS

OVERGROWN GARDENS PUT BACK INTO SHAPE

FRUIT TREES TREATED ● LOG & WOODCHIP SALES



FREE ESTIMATES & ADVICE WITH NO OBLIGATION

For quality jobs at a competitive price call:

Home: 01353 721665 - Mob: 07771 707921

All work carried out to BS 3998 Standard

A genuine family managed business est. for over 30 years - Fully Insured

THE NAME YOU CAN TRUST



This company offers a 7 day cooling off period



645 Services Ltd

For your complete Oil Services

Registered Office: 12/13 The Crescent, Wisbech,
Cams PE13 1EH - Director: B E Easey
Company Registration Number: 07872493
VAT Number: 126 5422 30

For a competitive oil quote, for
delivery in the village and
surrounding area, (Outwell, Upwell,
Tipp's End, Welney) please call 645
Services' local

Representative, Elaine, on 01354
638310 or 07803 178824

(office hours only please)

or Email: elaine@645services.co.uk

We will always try and be the best
price around - with local deliveries
scheduled for most weeks
throughout the month.



**Your Local, Professional Spray & Traditional
Painting Company**

Air/airless Spray Painting

Traditional Brush / Roller Paint & Decorating

Upvc Window & Door Painting

Exterior Timber Treating



Simply Contact Us On:

07703 459675 or hickscoatings@yahoo.com



March Stationery & Print

**Booklet Printing
Business Cards
Digital Photos
Leaflets
Newsletters
Banners**

01354 656614

sales@marchsp.co.uk

5 Fenland Walk, March, PE15 8TW

A.R. CLINGO

FUNERAL DIRECTOR

**Family Independent
Business**

**Private Chapel of Rest
Personal Attention**

24 Hour Service

Full estimates given at all times

Golden Charter
Funeral Plans



Pinfold House
St. Peter's Road
Upwell, Wisbech
Phone 01945 772502

Outwell Timber

For all your Timber and Building Supplies

**ISLE ROAD, OUTWELL
PE14 8TD**

Tel: 01945 77 21 16

**FENCING, PANELS, TRELLIS
TIMBER, PLYWOOD, DECKING**

SAND, BALLAST, GRAVEL

SCREWS, NAILS, BOLTS

PAINT, SILICONE, HAND TOOLS

**LOCKS, ELECTRICALS, PLUMBING,
GUTTERING
UNDERGROUND PIPE & FITTINGS**

CEMENT, MULTIFINISH, PLASTERBOARD

High quality, personalised, homecare services in the comfort of your own home



- Wisbech
- Downham Market
- March
- And all surrounding villages



SHORT & LONG-TERM CARE



DEMENTIA PATIENT CARE



REHABILITATION CARE



DISABILITY CARE



COMPANIONSHIP CARE



DISCHARGE FROM HOSPITAL CARE



Upwell Computer Repairs

Sales – Repairs - Maintenance - Upgrades

Sales & Support

Laptop Screen Replacement

Broadband Setup

Windows Reinstallation

Virus Removal

Hardware Upgrades

Tuition

Software Upgrades

Web Design

On-Site Services

Email Setup

Custom Built PC's

System Installations

Internet Security

Data Recovery Services

Network Installations



Contact Lewis today for a free consultation

Phone: 01945 772717 - 07849 778525

Email: support@upwellcomputerrepairs.co.uk

Web: www.upwellcomputerrepairs.co.uk

dermalogica®



Beauty Treatments by Jane

NVQ – op.i – Babcac.

Rose Cottage, Christchurch,
Cambs.

Telephone: 01354 638378



JESSICA®
Manicures & Pedicures



Microdermabrasion
Facials
& Gel Nails
& Pedicures



ST. TROPEZ
The Ultimate Tan

Non-surgical Face lifting Treatments

FENVISION

(Est. 1923)

CARING FOR THE NEEDS OF THE VISUALLY IMPAIRED

Our services include home visits, monthly support group meetings in March & Ely, outings, support, advice, visual aids & much more.

For further information please call 01354 656726, email office@fenvision.org or visit us at March Town Hall, Market Place, March.

Office Hours: Mon-Fri 9.30am – 12.30pm

Karen's Cut and Strip

Dog Grooming Service

Professional dog groomer of 28 years. For a quote and appointment:

Tel: 07825810299 Email spotties101@gmail.com

Victoria House
Euximoor Drove
Christchurch
PE14 9LR



GRANARY STUDIO

Your local picture framer

01354 638614

www.granarystudio.uk

The Granary
Hall Farm, Upwell Road
Christchurch
PE14 9LJ

Russell's Family Butchers

**Family butchers for 5 generations.
All of our meat and poultry is fresh
free range from our own farm.**

**Visit us at our shop in Upwell or at
our market stall in March
(Saturdays) or Wisbech
(Thursdays and Saturdays).**

48 Town Street, Upwell,

PE14 9DA

Tel: 01945 773419



LW Vehicle Services Ltd Car and Commercial Repairs

- Class 4 and 7 MOT Testing
- Full Diagnostic Service
- HGV Maintenance
- Batteries - Tyres - Exhausts
- Welding and Fabrication
- Timing Belts
- HGV PMI Inspections
- Aircon Service and Repair
- Courtesy Car Available
- All Service and Repairs Undertaken
- Car and Van Sales

Call 01354 610172
Email lwvs@outlook.com
Web lwvehicleservices.com



March Road, Welney, PE14 9SE



Wisbech •FUNERAL SERVICE•

Independent Family Funeral Directors



*Funeral Directors James
and Laura are proud to be
serving the community*

Personal, caring & affordable

*Advice without obligation
24 hours a day*



FUNERALS FROM £2,495

Inclusive of all fees

Chapel of Rest

Traditional, Modern & Eco-friendly funerals

Pre-paid & pre-arranged funeral plans

17 Old Market, Wisbech, Cambridgeshire, PE13 1NB
01945 405950 (24hr)

www.wisbechfuneralservice.co.uk

Village Contacts and Useful Information

By now you should have all received a hard-backed copy of the Contacts and Useful Information which featured regularly in the magazine. It was decided that we could free up a page in the magazine by offering this as a 'pull out and keep' page for readers. However, if you are new to the village, and haven't received a copy, please let us know (enquiries@theheron.info) and we will do our best to get one to you.

Your Local Councillor

Dal Roy - Independent Councillor - Elm and Christchurch
Mobile : 07885 381007 Email : droy@fenland.gov.uk



It's that time of year when Halloween and Fireworks are well out of the way. Bonfire night can be particularly challenging as there are many equestrian properties in Fenland. I often get many emails from these properties asking me to encourage people to attend organised displays rather than having their own in their gardens. As the cost of fireworks rises, it may be something that people choose to change in the future.

Now the clocks have altered, the darker nights draw in and temperatures drop, it is worth checking in on those that live alone or are more senior and may need a little extra help.

Christmas is approaching and many families will be focused on the festive season. Let's also remember that it is a challenging time for many, both physically and financially. As a Councillor, I am often in contact with various agencies and social prescribers to offer assistance in order to navigate this time of year, offering support for those who need it. If you feel that someone may be at risk or needs extra help or support, then please contact me and I will do my utmost to support them.

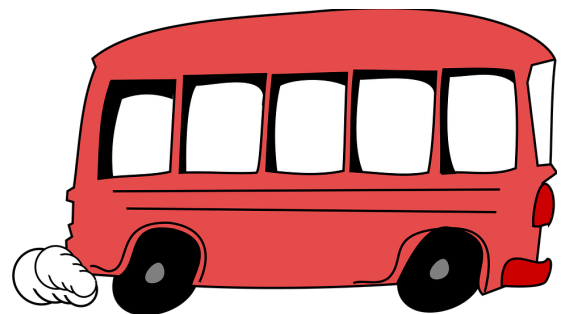
Encouragingly the bus service through Christchurch is going well, and it could do with more service users. The last time I travelled on the bus, I was amazed at the things I missed whilst in the car.

I regularly attend the Parish Council meetings and it's encouraging to see the area at The Hill will be refreshed soon to give it a new lease of life. It's also great to see the background work being carried out to renew the centre of the village around the bus stop.

Working together we achieve great things, and I would encourage you all to attend the Parish Council meetings as I love to meet you and hear your views on how things should be shaped in the future.



Please remember that no dogs are allowed on the playing field. Thank you. Your co-operation is much appreciated.



Letters to the Editorial Team

The Editorial team welcome letters from its readers. Please email letters to: editor@heron.info or post them to *The Editor of The Heron, 1 Brimstone Close, Christchurch PE14 9EE*. **PLEASE NOTE:** Letters will only be considered for publication if they are accompanied by name and contact details. The Heron will not share any contact details unless given permission.

We look forward to hearing from you!



Craft Club

A few more examples of some of the things our members enjoy doing at our Tuesday morning Hobbies and Craft Club.

We enjoy our crafts, but we also enjoy each other's company as well as picking up a few tips from likeminded crafters.

We meet from 10am until 1pm, first week free and then the cost is £3 per week or £10 per month, plus £1 per week for lunch. Just come along, you will be made very welcome, I'm sure.

In addition to this, we can also offer a Working with Stained Glass Course over 4 weeks for a charge of £85. However, places are limited. Please contact me for further details if you are interested. Janet Harper 07941 465319



Las Pasadas

If you are new to the village, here is something you might like to be part of.



During Advent, there's a tradition in our village called "Las Pasadas". This is Spanish for "places to stay". As you will remember, I'm sure, there was no room in the inn in Bethlehem for Joseph and his very pregnant wife Mary.

Our version of Las Pasadas gives us a chance to give the couple shelter for a night. People who wish to join in and give them shelter, dedicate a short time to pray for or think about the homeless and refugees in our country and around the world.

If you would like to offer a night's shelter to Mary and Joseph, please let me know and I will put you on the list.



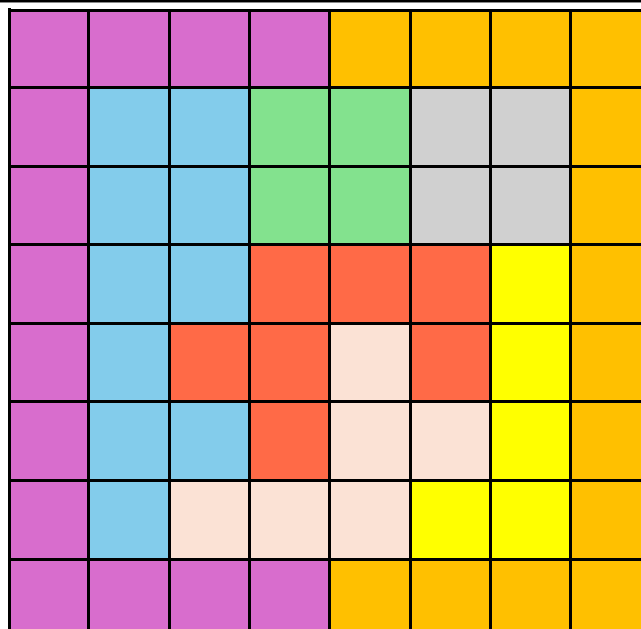
Annie Nason. 01354 638 088, or message me on Facebook. The idea is that you receive figures of Mary and Joseph, and then the next day pass them on to the next person on the list. We have two lists.

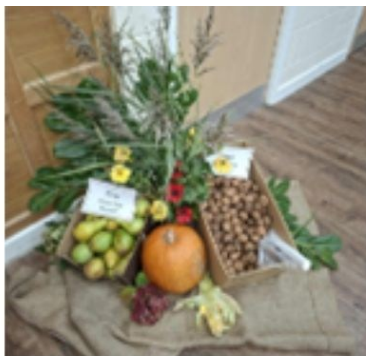
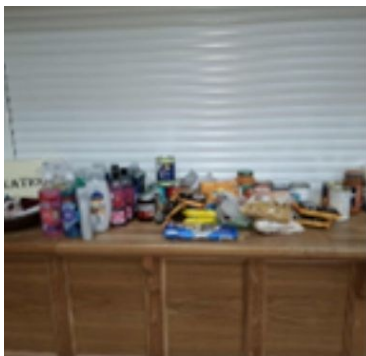
Happy thoughtful and compassionate Advent, everyone.
Annie

Puzzler

- Your goal is to have **exactly one X** in each **row, column and colour region**
- Two **X** cannot touch each other vertically, horizontally or diagonally

Solution on page 19...





Here's a selection of photos from the various events that have taken place in the village over the last couple of months. Thank you to those who supplied photos, and I have to say, fantastic work by Mike Simpson in the detail on the loaves of bread.



Any views expressed in The Heron do not necessarily reflect the views of The Heron Editorial Team. The team aim to provide a balanced view of village opinions where such views are expressed. We reserve the right to edit any submissions where we feel this is appropriate.



The Heron is printed by
March Stationery & Print, 5 Fenland Walk, March, Cambs PE15 8TW
Tel: 01354 656614 Email: sales@marchsp.co.uk